

Introduced by Councilmember

ORDINANCE NO.

AN ORDINANCE OF THE CITY OF PASADENA AMENDING THE OFFICIAL ZONING MAP OF THE CITY OF PASADENA ESTABLISHED BY SECTION 17.08.040 OF THE PASADENA MUNICIPAL CODE (SOUTH FAIR OAKS SPECIFIC PLAN ZONE CHANGES)

The People of the City of Pasadena ordain as follows:

**SECTION 1.** The official zoning map of the City of Pasadena as established by 17.08.040 is amended by modifying the boundaries established therein as follows. Any interpretation of the location of boundaries as described below shall follow the rules for interpretation as established by Section 17.08.050 of the Pasadena Municipal Code.

By additionally classifying as SP-2 (South Fair Oaks Specific Plan Overlay District) the following parcels within the IG base district and the IG AD-2 (General Industrial, Alcohol Density Overlay District #2) and IG HL-56 (General Industrial, Height Limit 56 Feet) districts:

- the parcels fronting on the west side of Fair Oaks Avenue between California Boulevard and State Street;

4/20/98  
9.B.3.

- the parcels fronting on the south side of California Boulevard between Fairmont Avenue and the Atchison Topeka and Santa Fe railway right-of-way;
- the parcels fronting on the north side of Congress Street between Fairmont Avenue and Fair Oaks Avenue;
- the parcels fronting on the south side of Bellefontaine Street between Fairmount Avenue and Fair Oaks Avenue;
- the parcels fronting on the east side of Fair Oaks Avenue between California Boulevard and a line approximately 194.21 feet south of Railroad Street (right-of-way);
- the parcels fronting on the south side of Railroad Street between Fair Oaks Avenue and State Street;
- the parcels fronting on the south side of Glenarm Street between Fair Oaks Avenue and the Pasadena Freeway;
- parcels within the area bounded by the Santa Atchison Topeka and Santa Fe railroad right-of-way, State Street,

the Pasadena Freeway, and Glenarm Street;

- the parcels fronting on the north side of Glenarm Street between Fair Oaks Avenue and the Atchison Topeka and Santa Fe railroad right-of-way;
- the parcels fronting on the west and east sides of Raymond Avenue between Glenarm Street and California Boulevard;
- the parcels fronting on the south and north sides of Fillmore Street between Fair Oaks Avenue and the Atchison Topeka and Santa Fee Railroad right-of-way;
- parcels fronting on the south and north sides of Pico Street between Fair Oaks Avenue and the Atchison Topeka and Santa Fe railroad right-of-way;

as shown on the map entitled "SP-2 South Fair Oaks Specific Plan Overlay District," dated December 1997, on file in the City Clerk's office, attached hereto as Exhibit 1, and incorporated herein by this reference as if fully set forth herein.

**SECTION 2.** The City Clerk shall certify the adoption of this ordinance and shall cause this ordinance to be published in full text.

**SECTION 3.** This ordinance shall take effect thirty days from its publication.

Signed and approved this \_\_\_\_\_ day of \_\_\_\_\_  
1998.

\_\_\_\_\_  
Chris Holden  
Mayor of the City of Pasadena

I HEREBY CERTIFY that the foregoing ordinance was adopted by the City Council of the City of Pasadena at its meeting held \_\_\_\_\_, 1998, by the following

vote:

AYES:

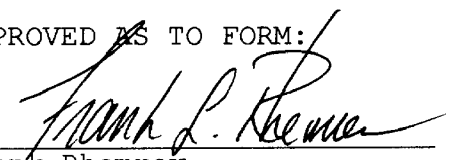
NOES:

ABSENT:

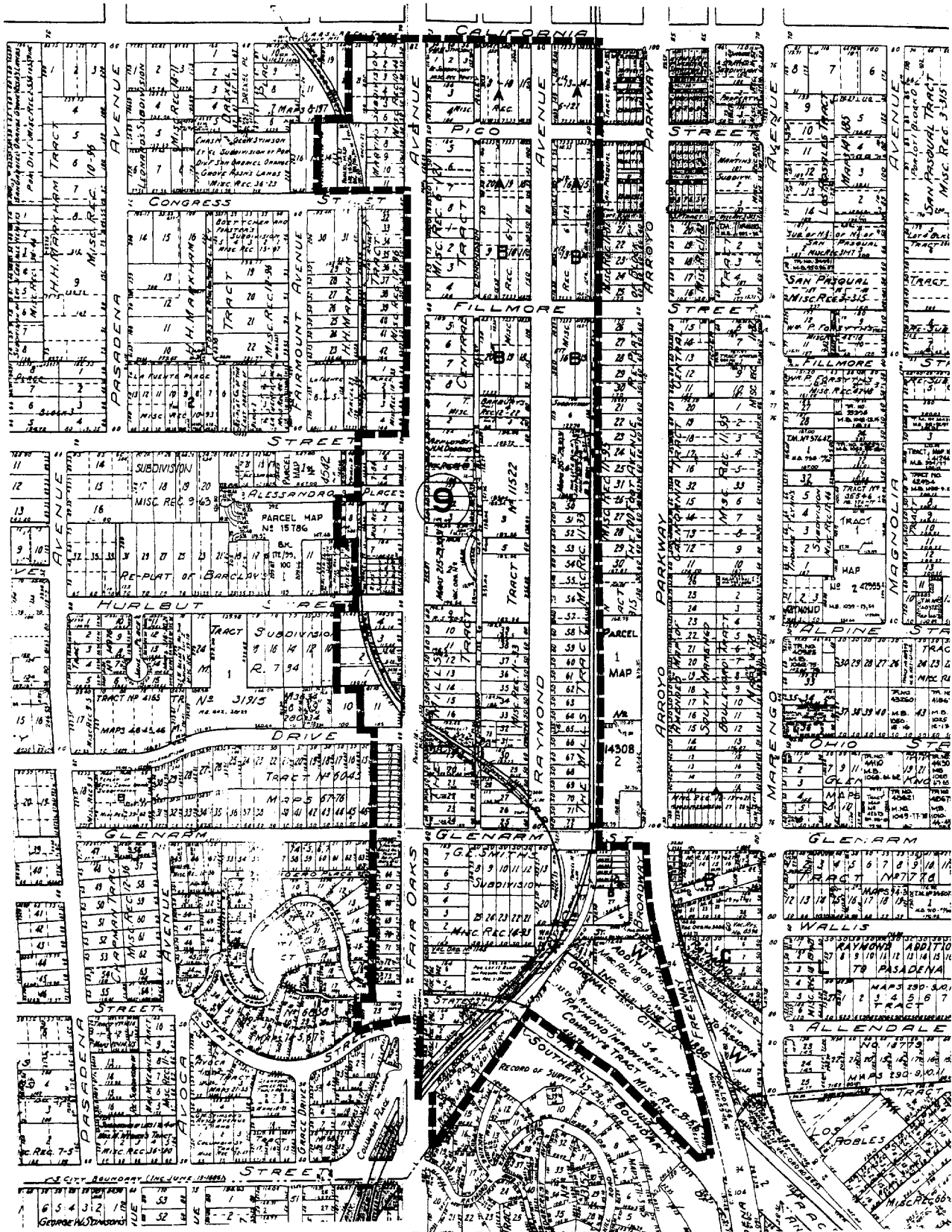
ABSTAIN:

Published:

\_\_\_\_\_  
Jane L. Rodriguez  
City Clerk

APPROVED AS TO FORM:  
  
\_\_\_\_\_  
Frank Rhemrev  
Senior Deputy City Attorney

# Exhibit 1 SP-2 South Fair Oaks Specific Plan Overlay District



Properties inside the **-----** boundary line are within the SP-2 South Fair Oaks Specific Plan Overlay District.