



Parks, Recreation & Community Services

FY 2027-2031 CIP Budget Artificial Turf Fields at City Parks

City Council

May 4, 2026





MSC Follow Up Items

Parks, Recreation & Community Services

- Cost of maintenance, renovation, and installation (initial and replacement)
- Alternative options / available sites
- Adding lights to existing fields
- Impacts to current user groups / programming
- Survey of parents and coaches
 - > Injuries experienced
 - > Preferred field type



Maintenance Cost – Villa Parke

Parks, Recreation & Community Services

10-Year Total Cost (3% Annual Inflation)		
Category	Artificial Turf	Natural Grass
Initial capital / conversion cost	\$970,810	\$1,100,000
Base annual maintenance cost (Year 1)	\$5,738	\$27,937
Base annual renovation cost (Year 1)	\$10,908	\$9,848
Annual escalation rate	3.0%	3.0%
10-year cumulative maintenance total	\$65,780	\$320,266
10-year cumulative renovation total	\$125,048	\$112,896
Turf replacement — Year 10 (escalated at 3%)	\$1,266,687	—
10-year total cost	\$2,428,325	\$1,533,162

PASADENA



Open Space Areas Used for Sports

Parks, Recreation & Community Services

- Brookside Park – Area H
- Gwynn Park
- Jefferson Park
- McDonald Park
- Victory Park
- Villa Parke



Athletic Fields With No Lights

Parks, Recreation & Community Services

- Brenner – can add lights
- Grant – can add lights
- Hahamongna – natural area, not recommended
- Hamilton (3) – water reservoir, not feasible
- Eaton Blanche – T-ball use, has availability
- Washington – T-ball use, has availability



Brenner Park – Add Lights

Parks, Recreation & Community Services



Brenner Park
Villa Park: Soccer Field Overlay
Field Dimensions 305'x190'

- Estimated cost:
~\$520,000 + soft costs
- Increased baseball play, soccer practices
- Size of field inadequate for organized soccer games



Grant Park – Add Lights

Parks, Recreation & Community Services



Grant Park
Villa Parke Soccer Field Overlay
Field Dimensions 300'x190'

- Estimated cost: **~\$520,000 + soft costs**
- Increased baseball play, soccer practices
- Size of field inadequate for organized soccer



Alternative Options

Parks, Recreation & Community Services

- **Memorial Park**
 - > Insufficient area to meet program needs
 - > Additional sloped areas limit safe play

Memorial Park





Alternative Options

Parks, Recreation & Community Services

- Central Park
 - > Insufficient area to meet program needs
 - > Walkways, tables, trees, impede organized play





Possible Villa Parke Impacts

Parks, Recreation & Community Services

- 7 vs. 7 Fall League – 750 participants
- Flag Football - 178 participants
- Walking Soccer - 10 participants
- FC Golden State - 30 participants
- Providence College - 50 participants
- Adult Sports Management Soccer League – 1,000 participants



Possible Robinson Park Impacts

Parks, Recreation & Community Services

- Flag Football - 178 participants
- Pasadena Ponies – 40 participants
- Rosebowl Pony League - 210 participants
- West Pasadena Little League – 293 participants
- Ultimate Frisbee – 80 participants
- LA Sports Net – 120 participants
- Adult Sports Management Soccer League - 1,000 participants

PASADENA

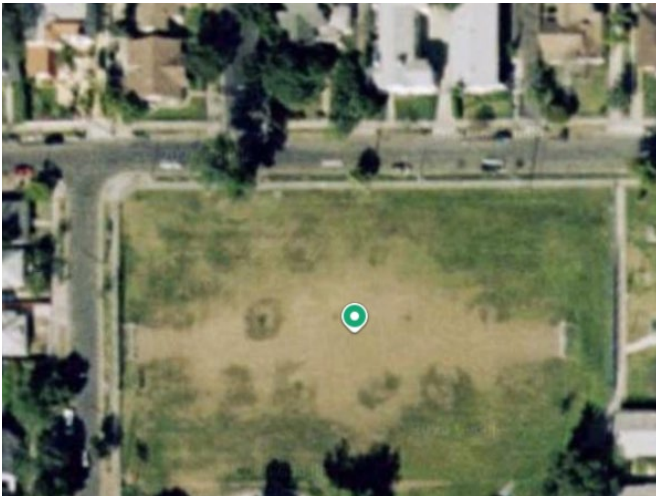


Villa Parke - Grass Fields

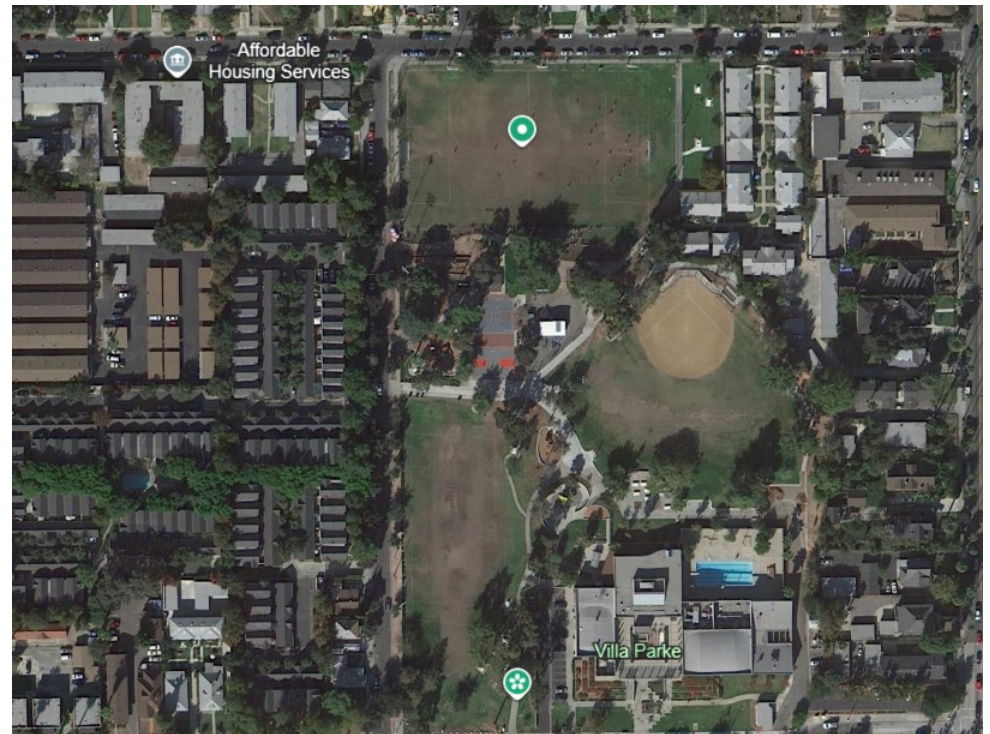
Parks, Recreation & Community Services



November 16, 2005



March 16, 2006



November 15, 2009



Artificial Turf

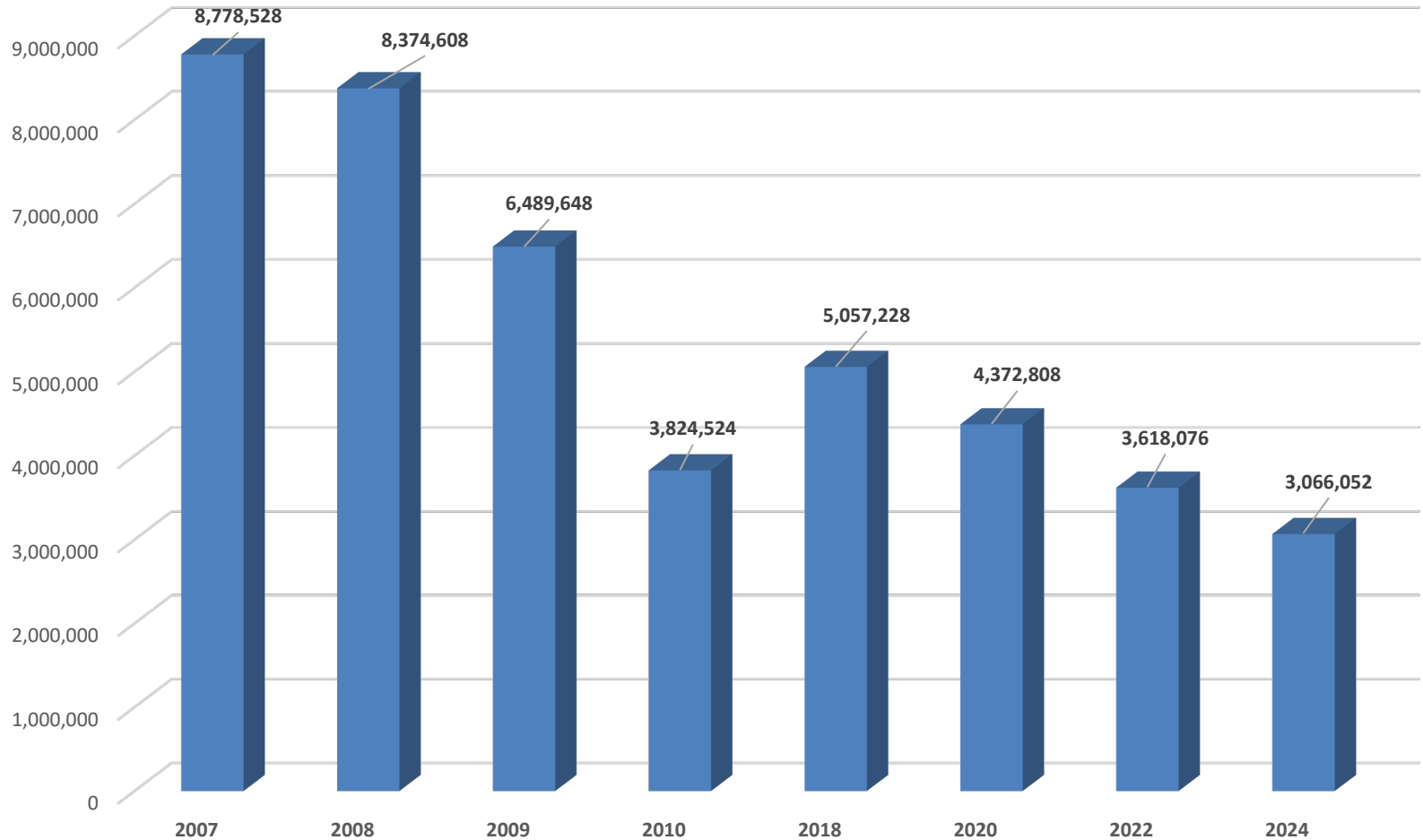
Parks, Recreation & Community Services

- Artificial turf installation – 2009
 - > Increase playability
 - > Activate the park
 - > Improve the physical, mental, social wellness of youth
 - > Water conservation
- Same reasons still apply today



Water Usage – Villa Parke – (2007-2024)

Parks, Recreation & Community Services



PASADENA

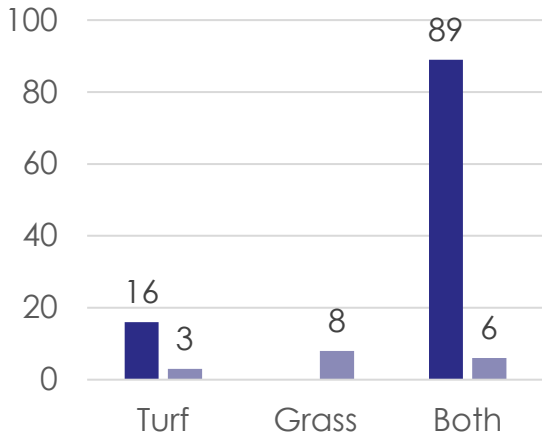


Survey – Injury on Fields

Parks, Recreation & Community Services

Field Use and Injury Survey: Five-Year Review

FIELD USE



VPYSL Parents Sports Users

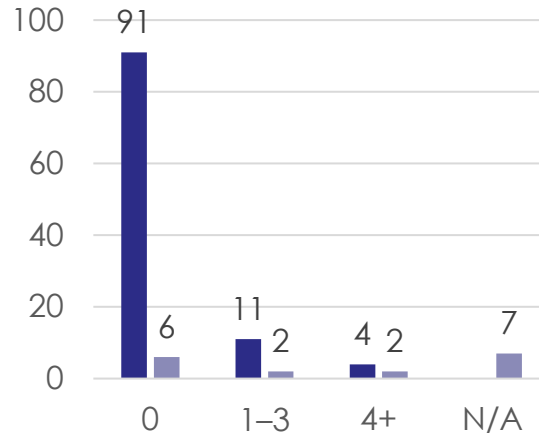
85%

VPYSL: Play on both surfaces

35%

Sports Users: Play on both surfaces

TURF INJURIES



VPYSL Parents Sports Users

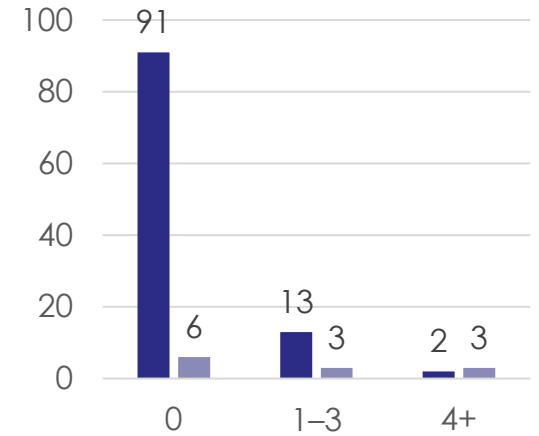
86%

VPYSL: Zero turf injuries

60%

Sports Users: Zero turf injuries

GRASS INJURIES



VPYSL Parents Sports Users

82%

VPYSL: Zero grass injuries

50%

Sports Users: Zero grass injuries

PASADENA

* Turf Injuries: 7 Sports Users responded N/A — excluded from 0/1-3/4+ counts



Survey – Field Preference

Parks, Recreation & Community Services

