



Fig.1 - ROOSEVELT SCHOOL – 1909 HISTORIC PHOTO looking east from Rosemont Ave. (in foreground)
with 1907 elementary school building at right, 1909 kindergarten bungalow at left
(from Pasadena Museum of History)

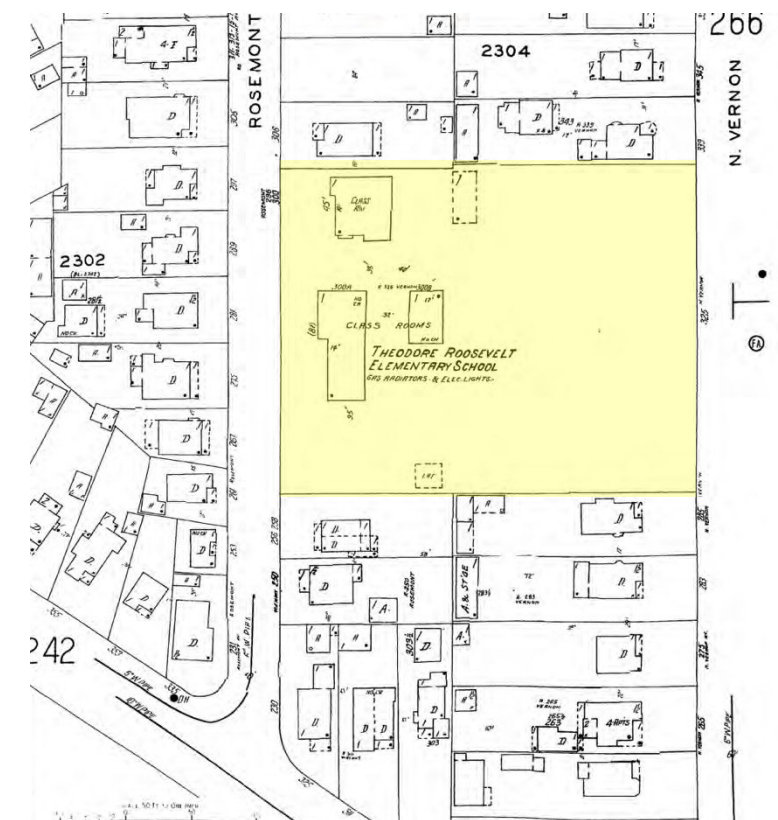
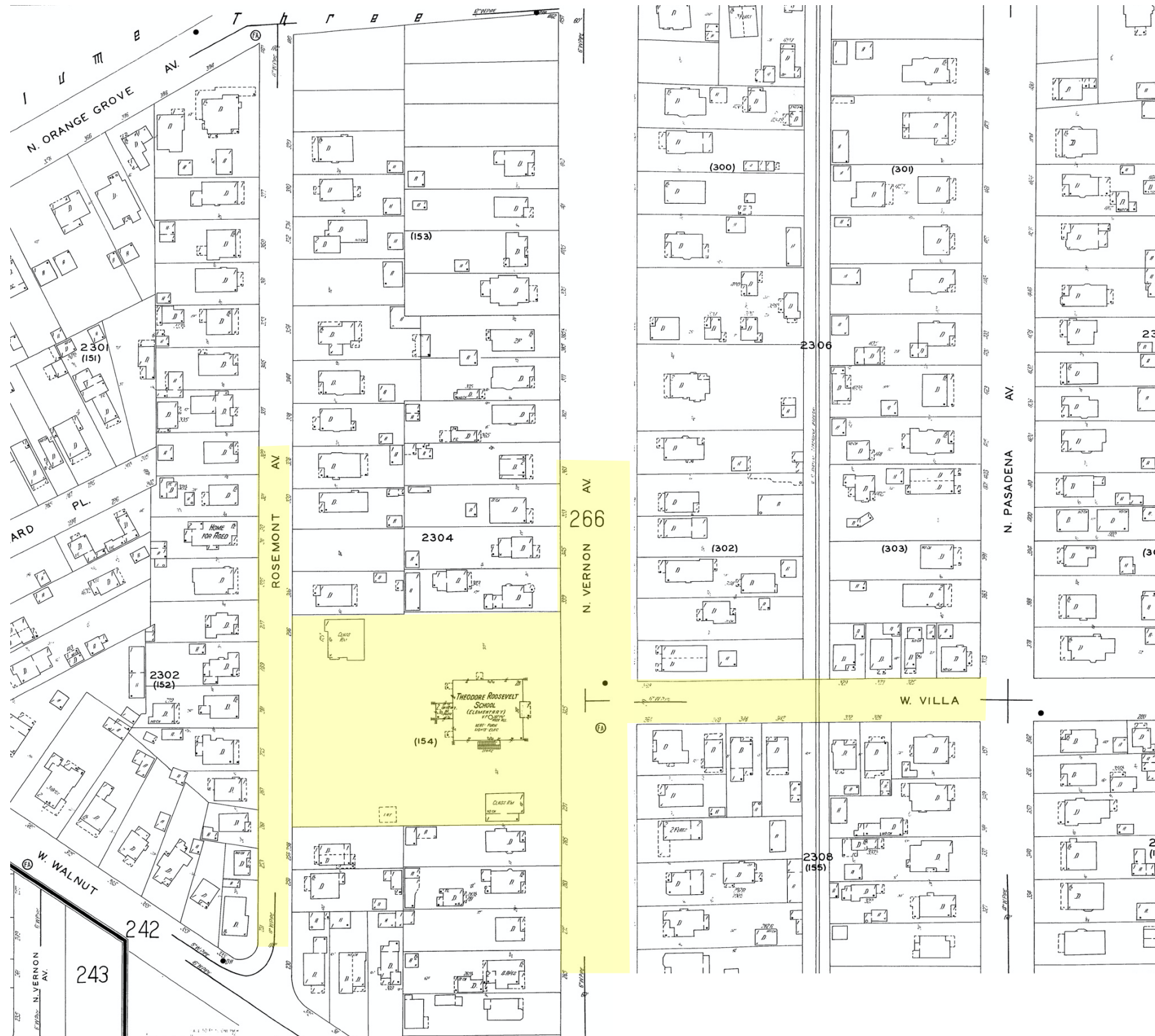
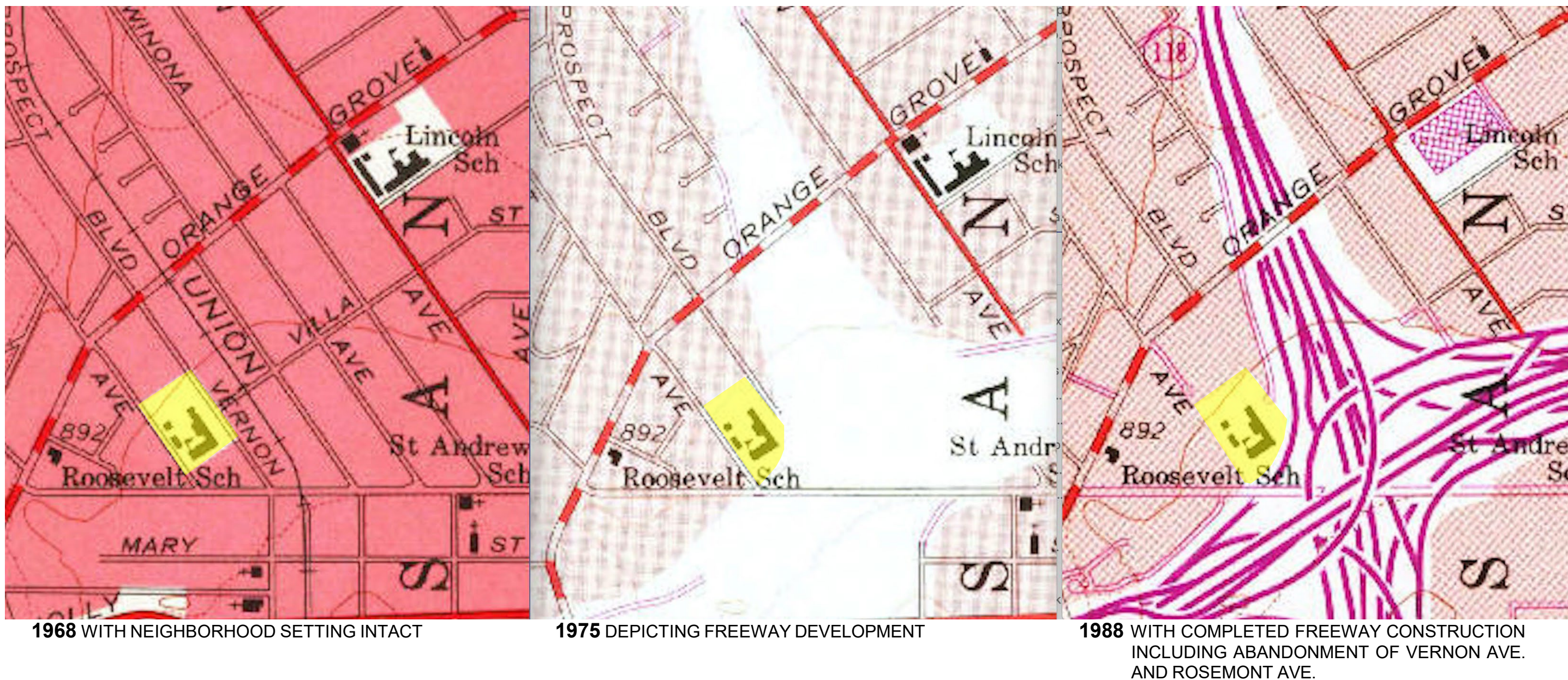
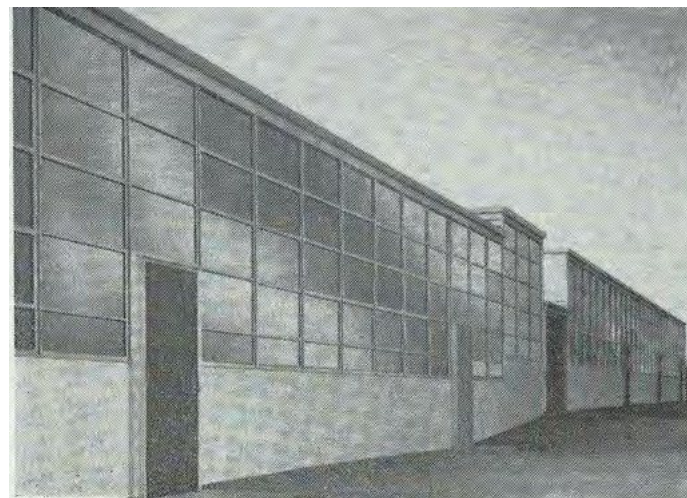


Fig.2 – ROOSEVELT SCHOOL – 1931 SANBORN MAP depicting the Roosevelt School in its original neighborhood setting with 2 street frontages and with eastward cross-axial street (north at upper right)

Fig.3 – ROOSEVELT SCHOOL – 1951 SANBORN MAP



Figs.4-6 – ROOSEVELT SCHOOL (highlighted) – FROM USGS MAPS (north is up)



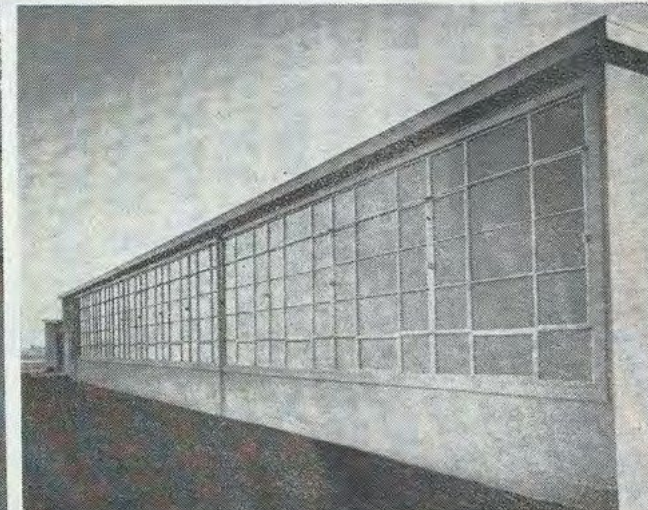
Highland School, Inglewood
H. L. Gogerty, Architect



Arvin High School, Bakersfield
Ernest L. McCoy, Architect



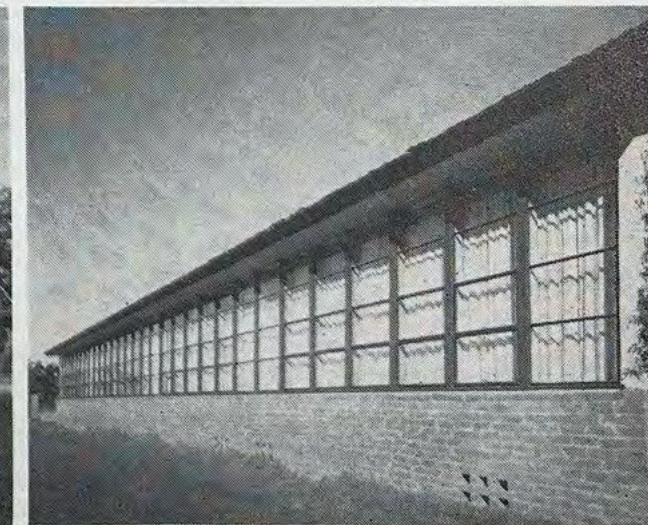
Yolansdale School, San Anselmo
Bamberger & Reid, Architects



Sylvan School, Modesto
Fred L. Schwartz & Wm. G. Hyberg, Architects



Woodside School, Woodside
Clark & Beuttler, Architects



Carmel School, Carmel
Kump & Falk, Architects

Fig.7 – California school building ad (*Architect & Engineer*, March 1950, p5)

LOCATION, Fresno, Calif.
DAVID H. HORN & M. D. MORTLAND, architects
CLINTON D. TERNSTROM, associate architect
McDOUGALD & LEINO, electrical engineers
GORDON S. STILES, mechanical engineer
VALLEY BUILDERS, contractors, Stage I
L. H. HANSEN & SONS, contractors, Stage II

School for crippled children

**meets extraordinary space needs and
licks tough orientation problem
on a low budget**

There are more than 2 million physically handicapped children of school age in the US. By and large they have been getting a poor deal. Too many who are unable to make out one way or another in regular classes are assigned to home instruction simply because no proper school provisions exist. Or they attend special classes in handicapped buildings planned as churches, barracks or regular schools.

Section shows sun protection arrangements for classrooms on both sides of playcourt. Below, south wing facade and, bottom, entrance area.



Fig.8 – Sunshine School, Fresno, 1949-52 (*Arch. Forum*, Aug.1952, pp.116-17)



Fig.9 – Madison Elementary School, Pomona (Weston and Marston, 1953)

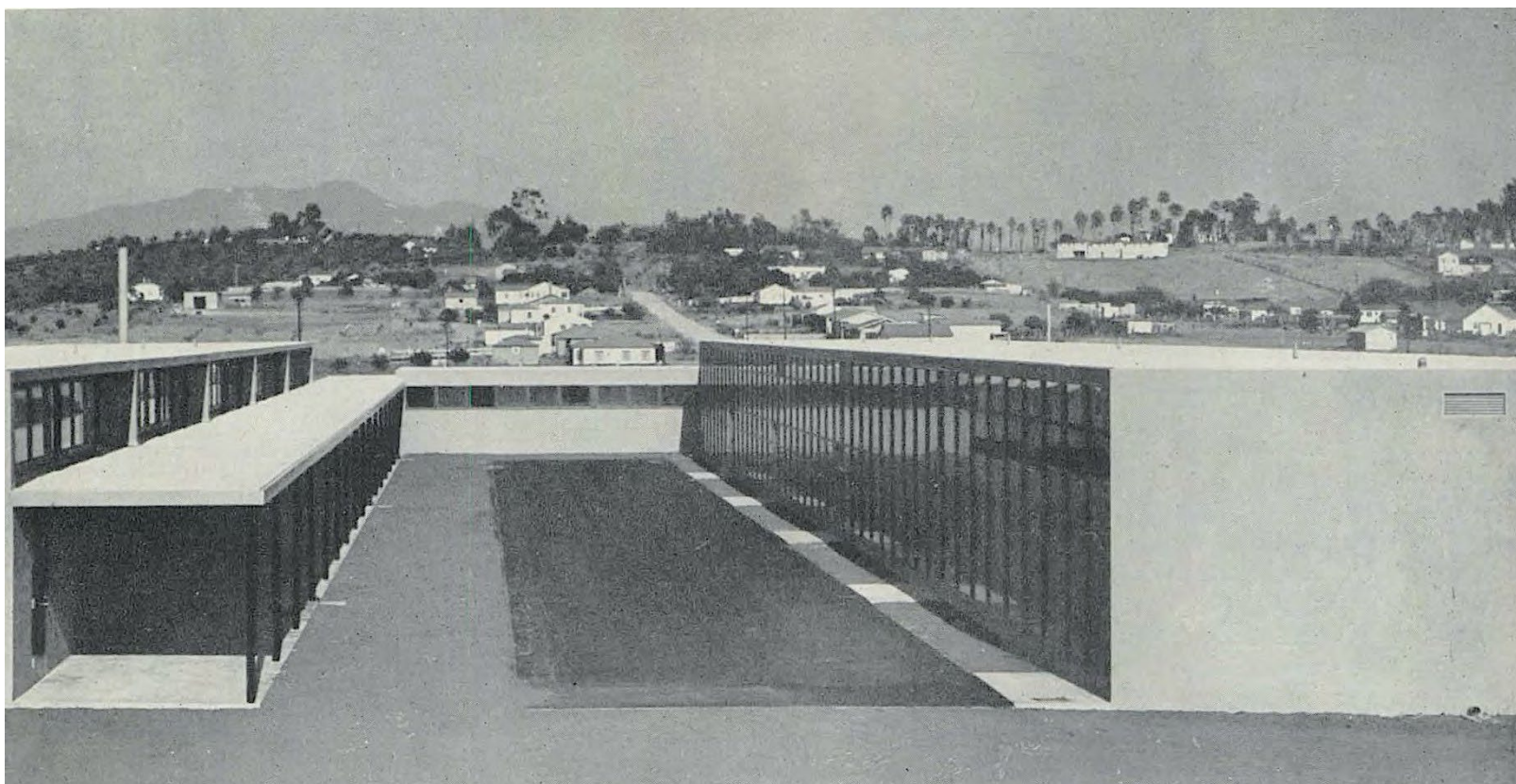


Fig.10 – Vista Elementary School, Vista, CA, 1950 (from June 1951 *Arch. Record*, p129)



Fig.11 – Katherine Finchey Elementary School, Palm Springs, CA, 1950
(from *Aluminum in Modern Architecture Volume 1*, 1956, pp.164-165)

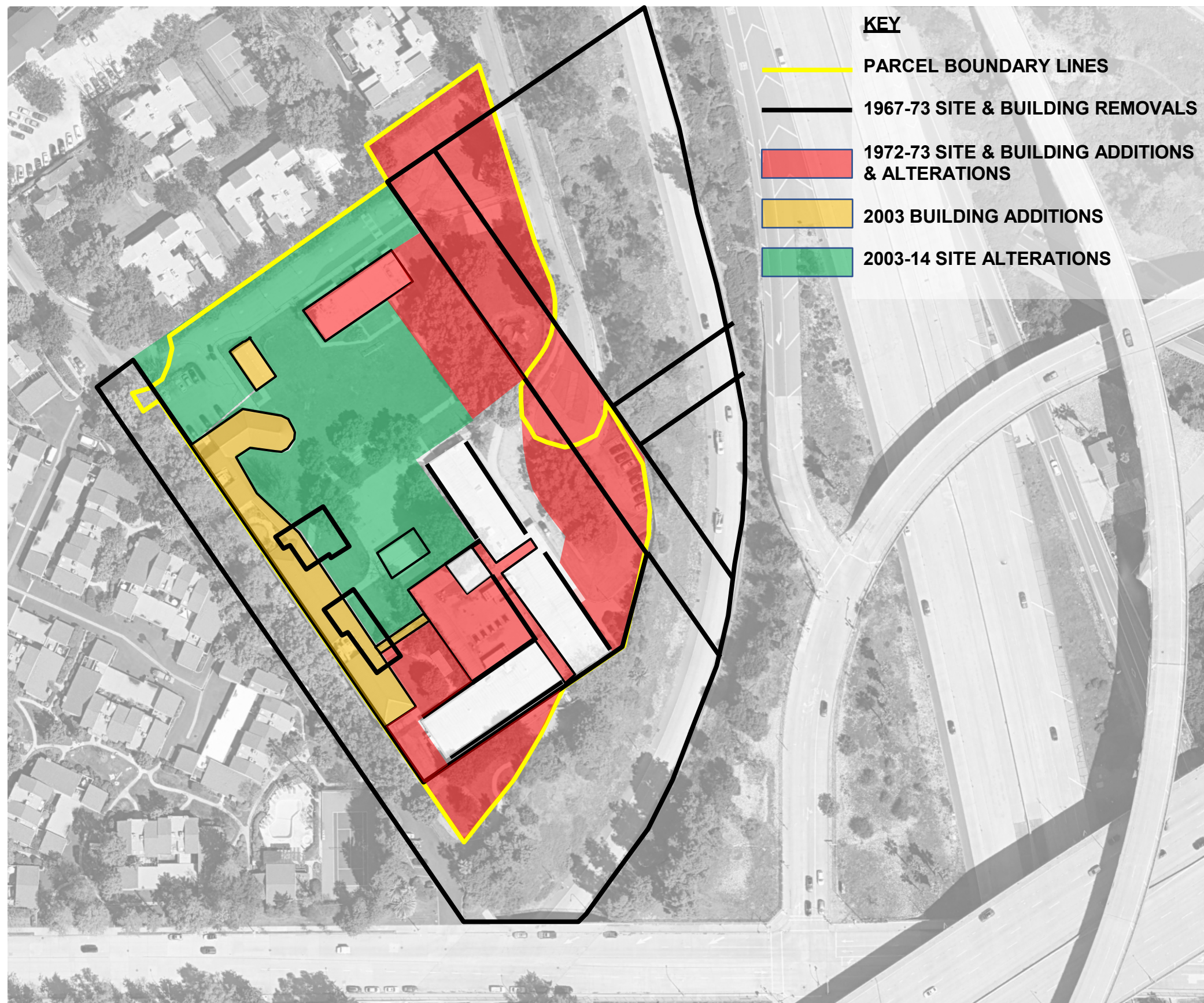


Fig.12 – ROOSEVELT SCHOOL - 2024 AERIAL illustrating extent of campus wide changes



Fig.13 – ROOSEVELT SCHOOL – 2025 AERIAL VIEW (Google Earth, north is up)



ORIG. RENDERING OF FRONT ENTRY & LOUVERED DESIGN



c1970 VIEW OF 1953 BLDG. LOUVERS



2024 VIEW OF REPLACEMENT FRONT ENTRY & REMOVED LOUVERS



2024 VIEW OF INFILLED & REPLACED FRONT ENTRY

Figs.14-17 (clockwise from upper left) – ROOSEVELT SCHOOL VIEWS

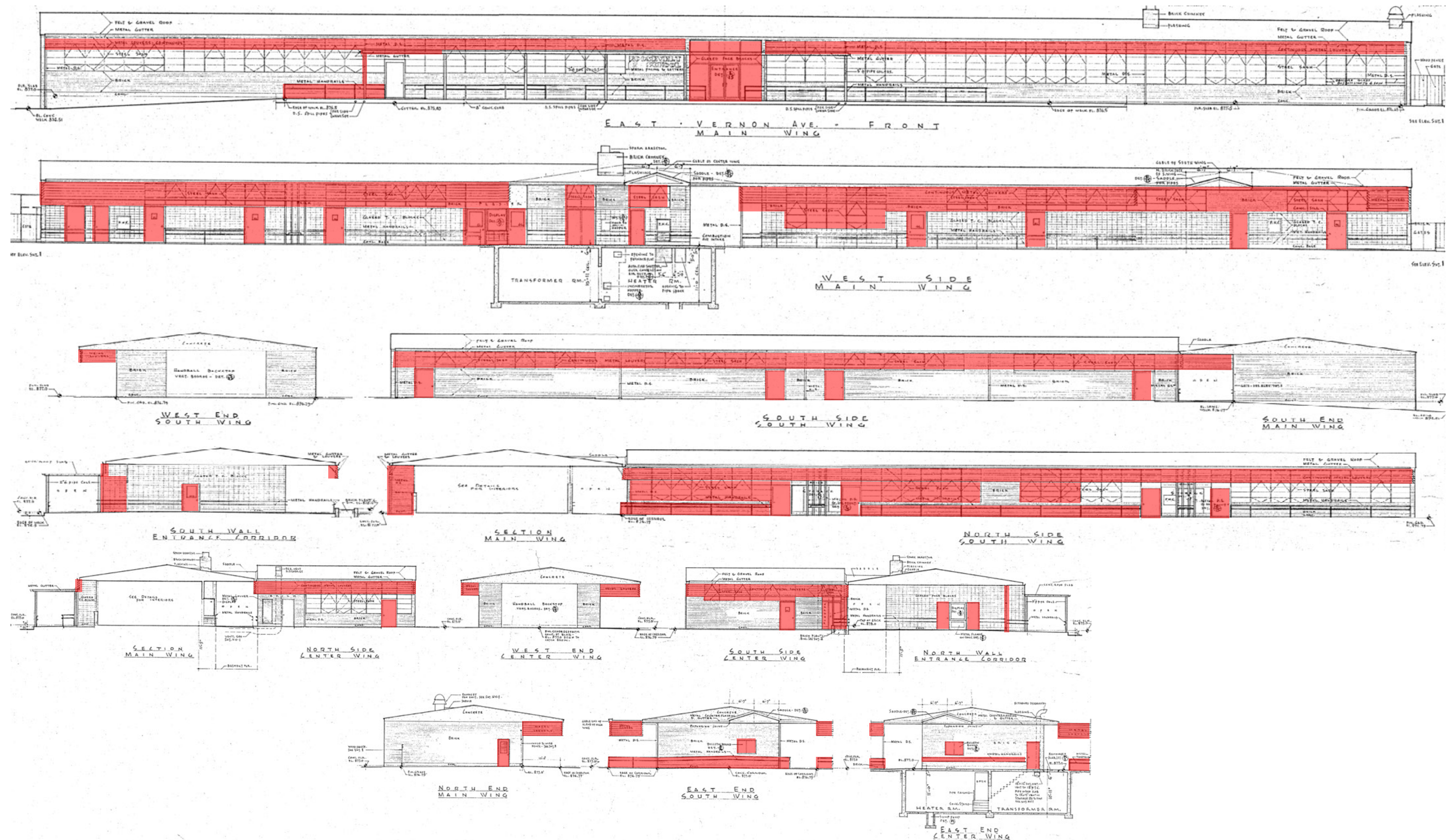


Fig.18 – ROOSEVELT SCHOOL – 1953 EXTERIOR BUILDING ELEVATIONS ILLUSTRATING REMOVAL OF ORIGINAL EXTERIOR ELEMENTS (IN RED)

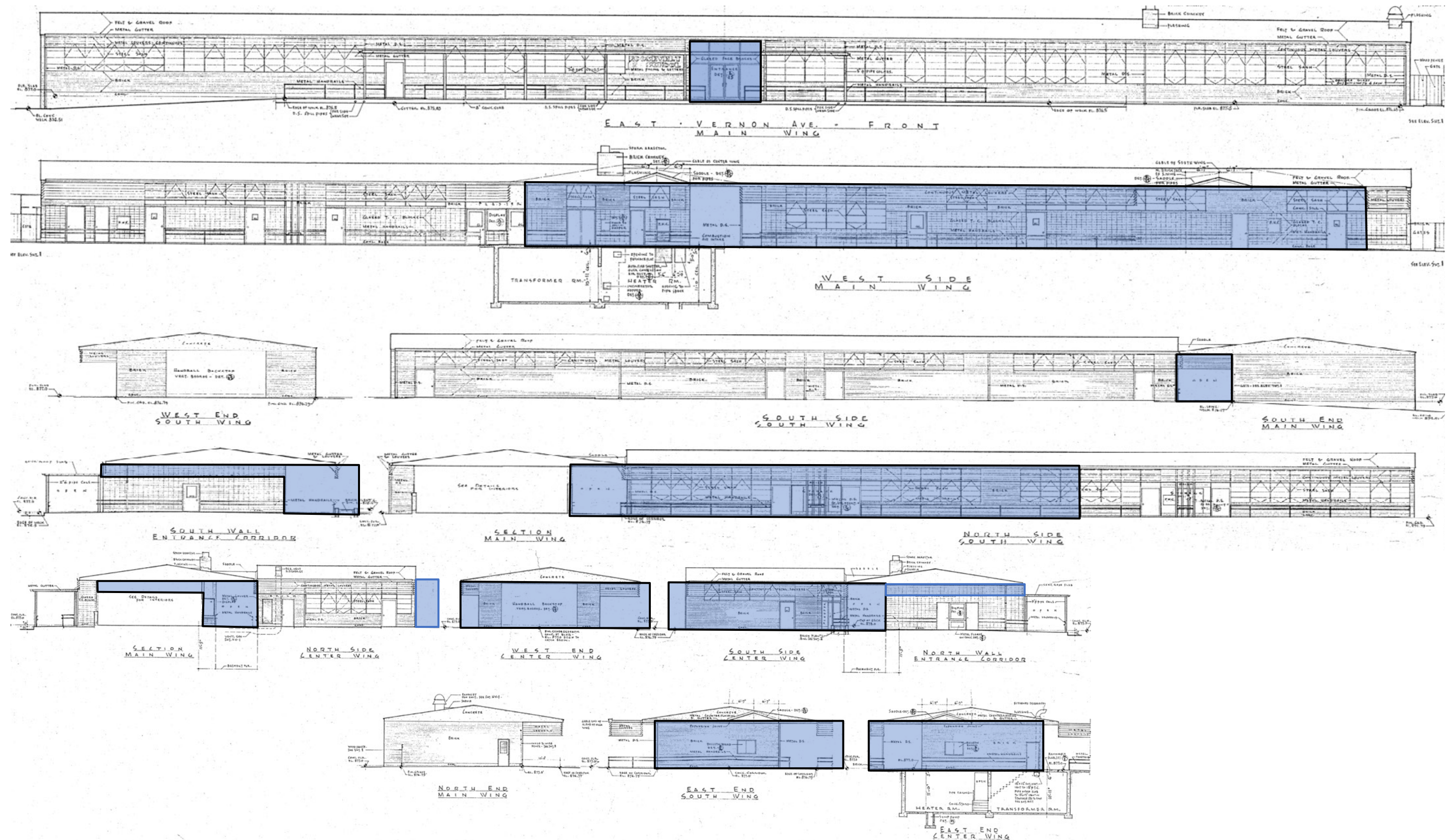


Fig.19 – 1953 EXTERIOR BUILDING ELEVATIONS ILLUSTRATING THE EXTENT OF ADDITIONS (IN BLUE)

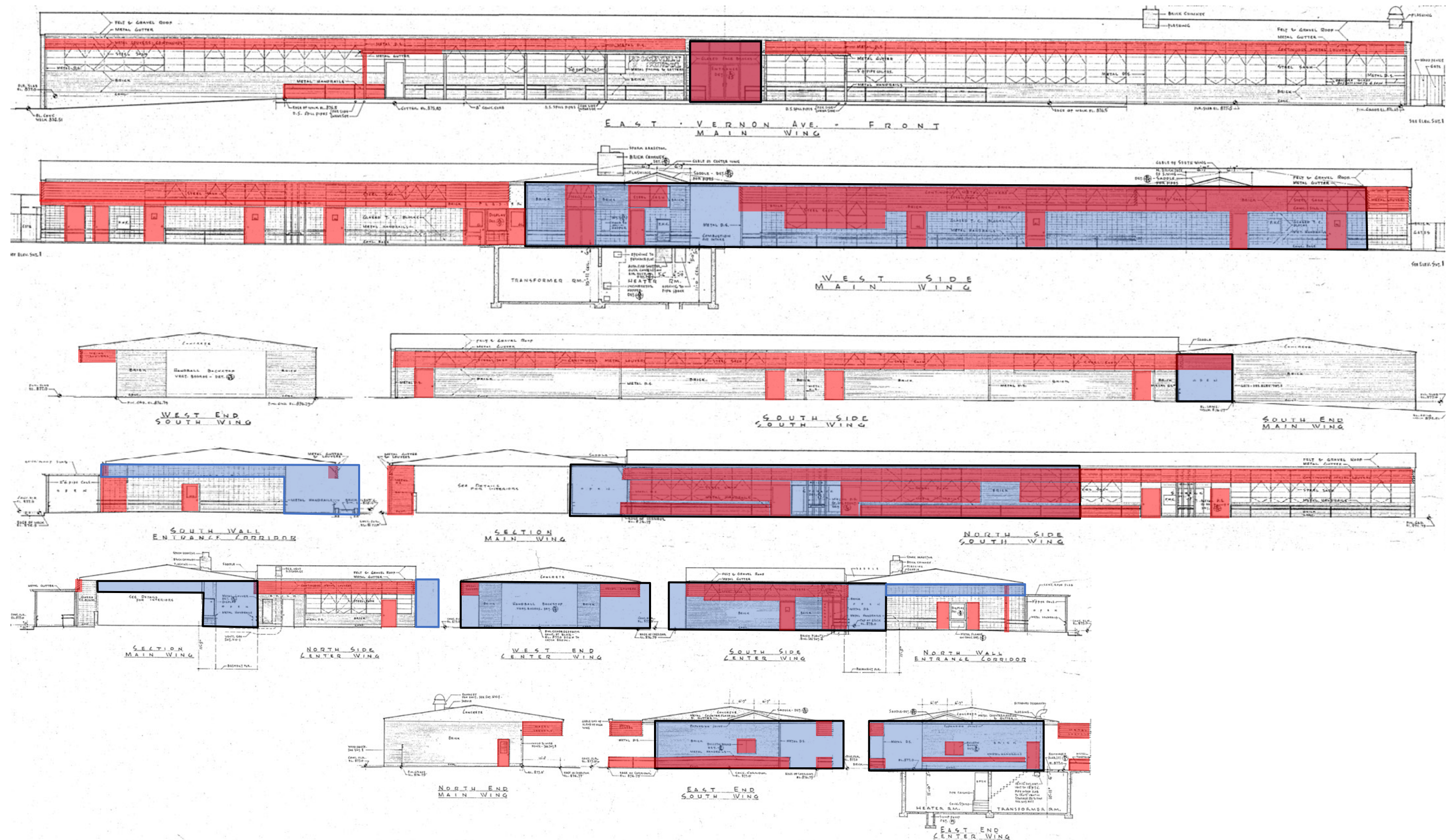
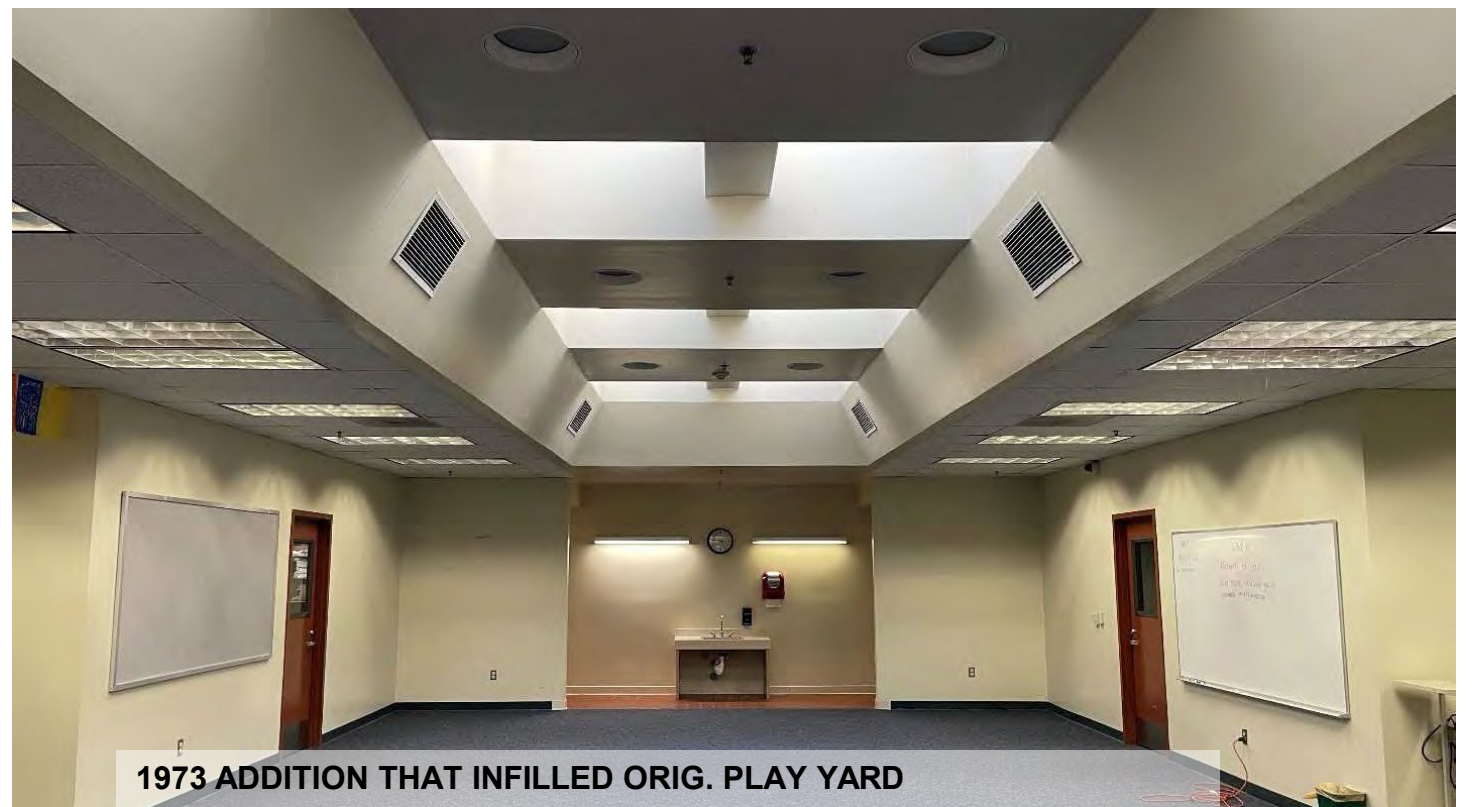
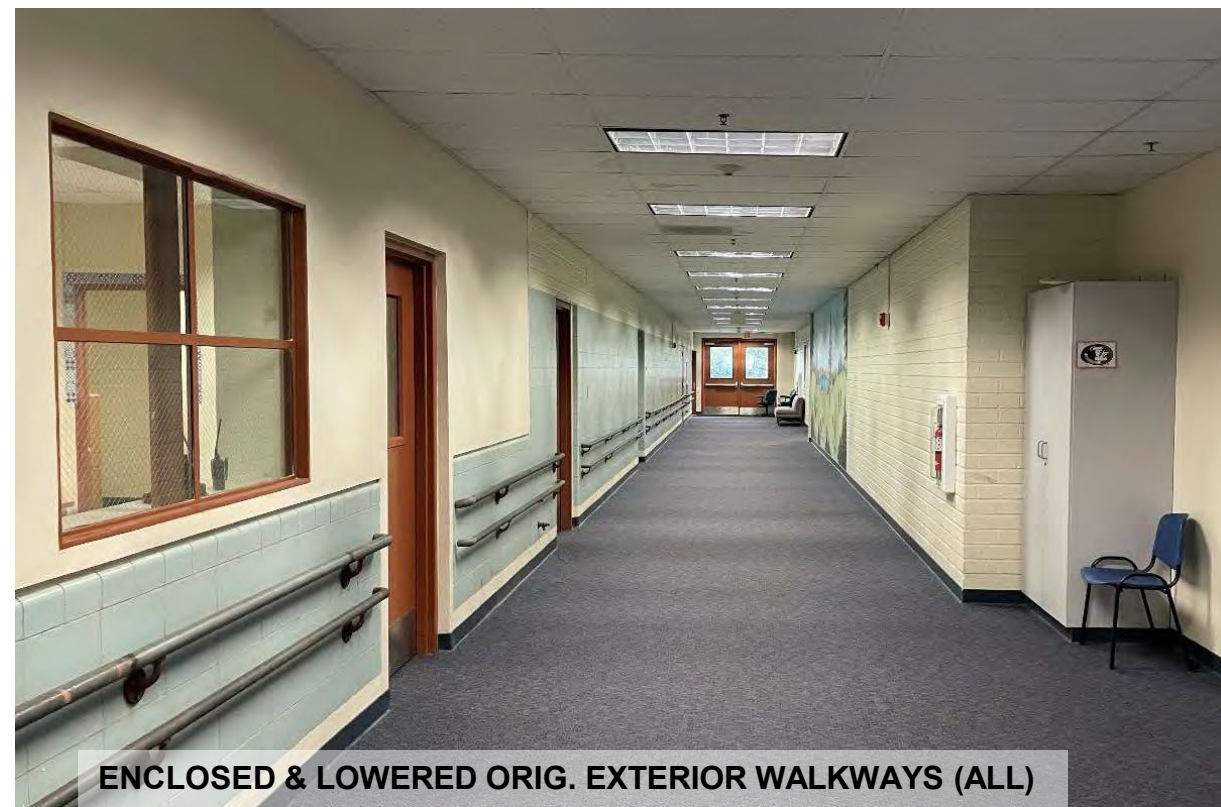
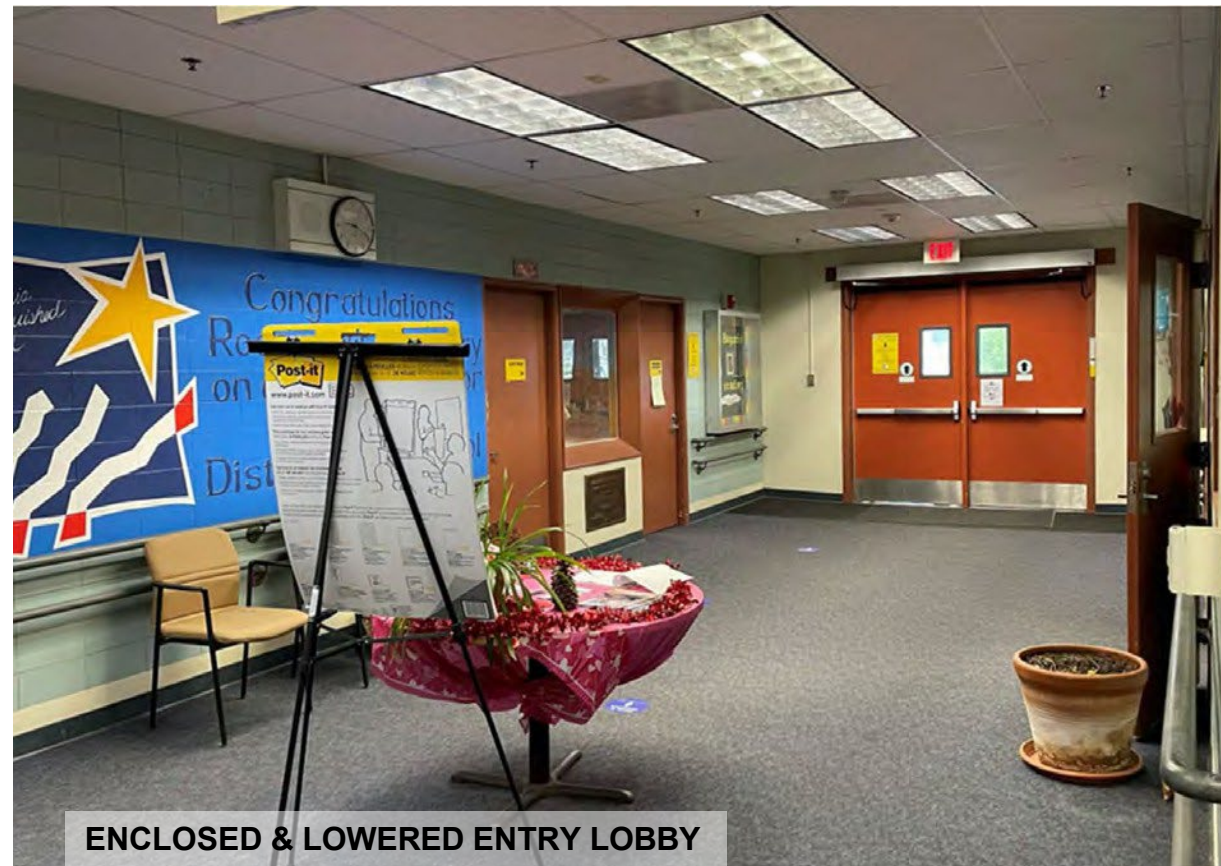


Fig.20 – ROOSEVELT SCHOOL - 1953 BUILDING ELEVATIONS ILLUSTRATING THE EXTENT OF REMOVALS AND ADDITIONS



Figs.21-24 (clockwise from upper left) – ROOSEVELT SCHOOL – 2024 VIEWS OF SUBSTANTIAL ALTERATIONS AT INTERIOR



Figs.25-27 (clockwise from top) – ROOSEVELT SCHOOL – 2024-25 VIEWS OF CAMPUS



Fig.28 – ROOSEVELT SCHOOL – 2024 view of school frontage from terminus of N. Pasadena Ave. (looking south)