

# **ATTACHMENT E**

Summary of Alterations  
**Site Plan Alterations and Additions**





LANDSCAPING PLAN

ENTRANCE

MAIN

WING

ENTRANCE

OUTLINE

PASADENA AVENUE

PARKING LOT

ROOSEVELT SCHOOL  
HANDICAPPED CHILDREN  
PASADENA, CALIF.

PROJECT NO. 10000  
SCALE: 1/8" = 1'-0"  
DATE: 10/1/68  
DRAWN BY: J. SMITH  
CHECKED BY: J. SMITH  
APPROVED BY: J. SMITH  
CITY OF PASADENA: PLANNING DEPARTMENT



## Exterior & Interior Changes 1972

Photos below show areas of addition and enclosure of the open breezeways between the South and Center Wings and Main (east) Wing



Original Main Wing

1972 Additions and Enclosure



Enclosure of the open breezeways between the South and Center Wings and Main (east) Wing



Original Main Wing Exterior Wall  
(Now Enclosed)

Original Central Wing Exterior Wall & Door  
(Now Enclosed)

1972 Addition/Infill



## Main Entry Changes

### Original Design



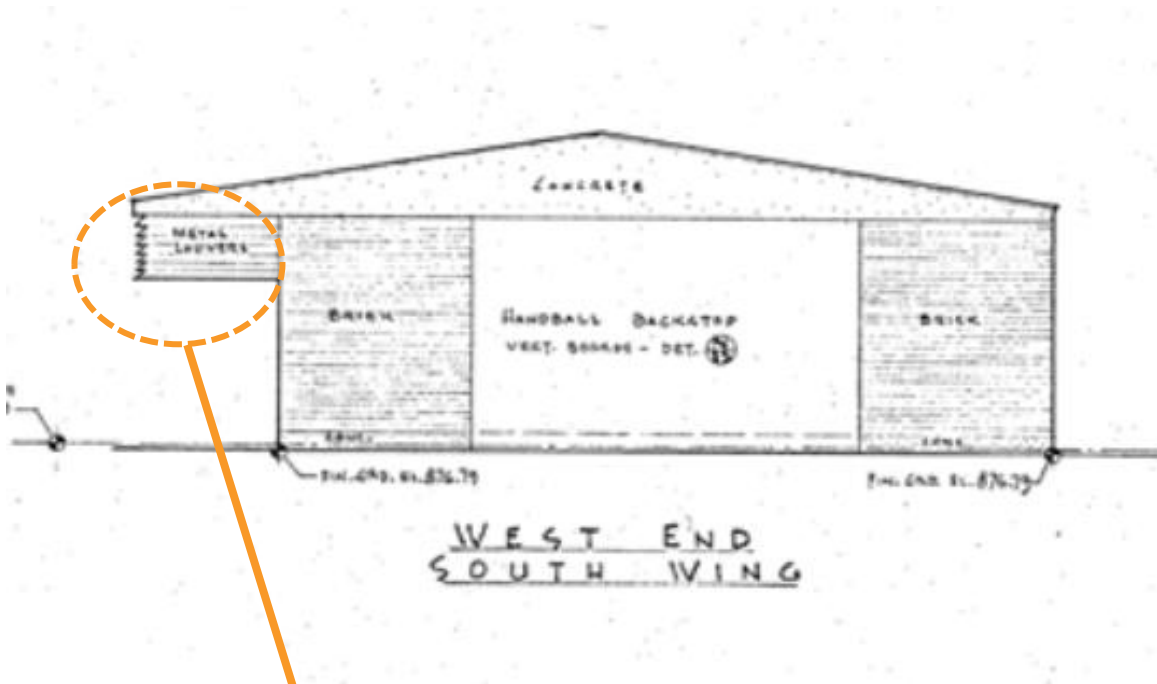
### Current Design

(Replacement of the original primary entry at the east façade of the Main Wing, including removal of the glass entry doors, sidelights and transoms and installation of new solid tile cladding and solid doors)



### Architectural Features (Roof Louvers)

Removal of metal louvered sun-shades along the canopy edges throughout



Exterior Doors Replaced throughout

