



Department of Public Works

CENTRAL LIBRARY EARTHQUAKE RETROFIT & RENOVATION PROJECT - PROGRAMMING AND SCHEMATIC DESIGN UPDATE

City Council Presentation
January 22, 2024





Presentation Overview

Presentation Agenda

- Introductions
- Background
- Library Programming Update
- Community Outreach Efforts
- Schematic Design Update
- Next Steps



Department of Public Works

BACKGROUND



PASADENA



Background

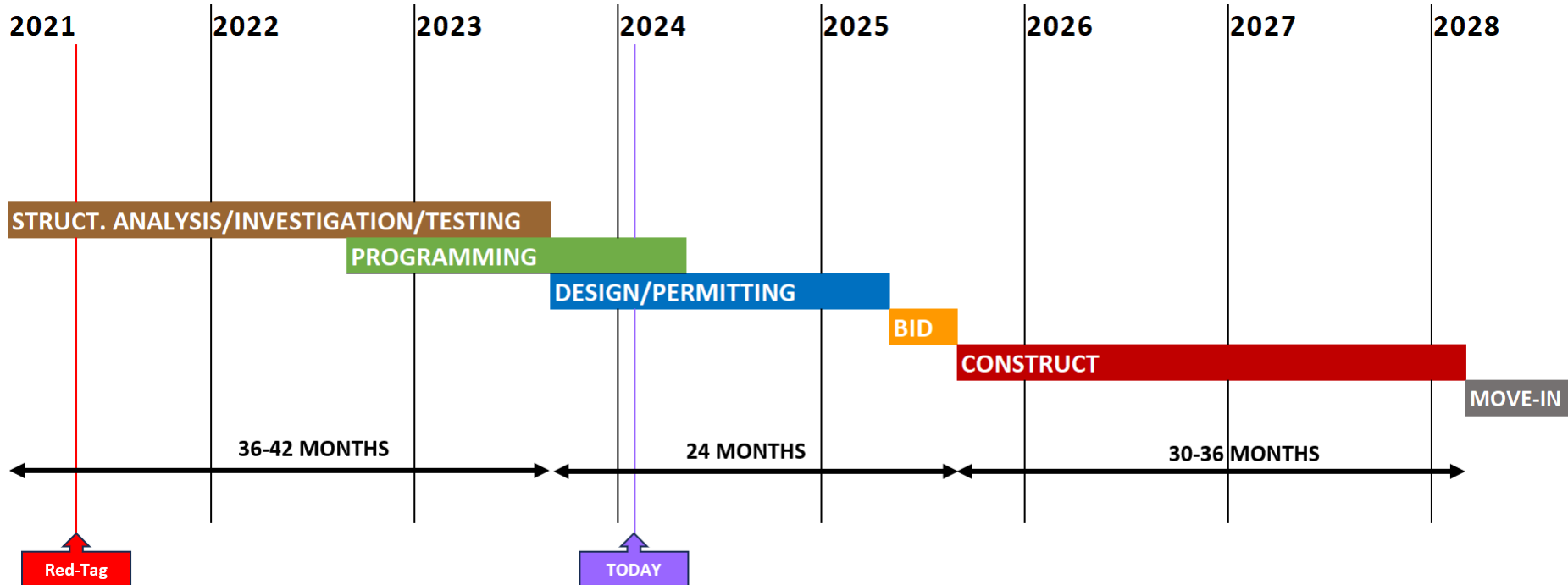
Key Milestones

- April 2021 Preliminary Structural Evaluation revealed the Library is an Unreinforced Masonry (URM) Building & determined it unsafe for occupants in the event of an earthquake
- May 3, 2021 City Officials forced to close the Library acting in the best interest of the public and employees
- June 2021 - Dec 2022 Geotechnical and building investigations, material testing, modeling & structural analysis, independent structural evaluation
- February 6, 2023 City Council authorized City Manager to enter into Contract with Gruen Associates for Environmental Documents and Construction Drawings
- March – August 2023 Development and evaluation of various earthquake retrofit approaches
- August 21, 2023 City Council approved the Concrete Shear Wall approach



Background

Project Timeline





LIBRARY PROGRAMMING UPDATE





Library Programming Update

Programming Report Recommendations

- February 2023 – Community Programming Committee (appointed by City Manager) issued its “Recommendations for Central Library Programming” report.
- Report’s key recommendations are as follows:
 - > Maintain historic character of the building
 - > Design spaces for the 21st century
 - > Make improvements to accessibility
 - > Remain true to the mission of the library
 - > Conduct program workshops/interviews with library staff
 - > Consider new and innovative ways of offering service
 - > Respond to Community needs
 - > Reach out to the Community to further identify needs



Department of Public Works

COMMUNITY OUTREACH EFFORTS



PASADENA



Community Outreach Efforts

Community Feedback

- Retain historic character of the building
- Create a welcoming place for the community to gather
- Special events are very important
- Upgrade building technology including access to computers
- Improve the restroom facilities
- Retain the ability to browse through the book stacks

More specifically, respondents requested the following programming spaces be incorporated into the final design:

- Innovation Lab (Maker's Space)
- Multipurpose areas for community gathering events
- Small group study and tutoring rooms
- Art exhibition rooms
- Music practice studio
- Copy Center with printers and copiers
- Coffee cart in outdoor courtyard
- Community/non-profit meeting rooms
- Gift shop/bookstore
- Outdoor play area



Community Outreach Efforts

Outreach Events

- May 24, 2023 Community Meeting at Jefferson Auditorium
- July 8, 2023 Victory Park Farmers Market Pop-up Booth
- July 15, 2023 Colorado Street Bridge Heritage Party Community Booth
- August 1, 2023 National Night Out Booth at Police Headquarters
- September 21, 2023 Community Meeting at Robinson Park Recreation Center
- December 13, 2023 Community Meeting at Pasadena High School
- Early 2024 Two more community meetings: La Pintoresca Teen Center and Villa Parke Auditorium

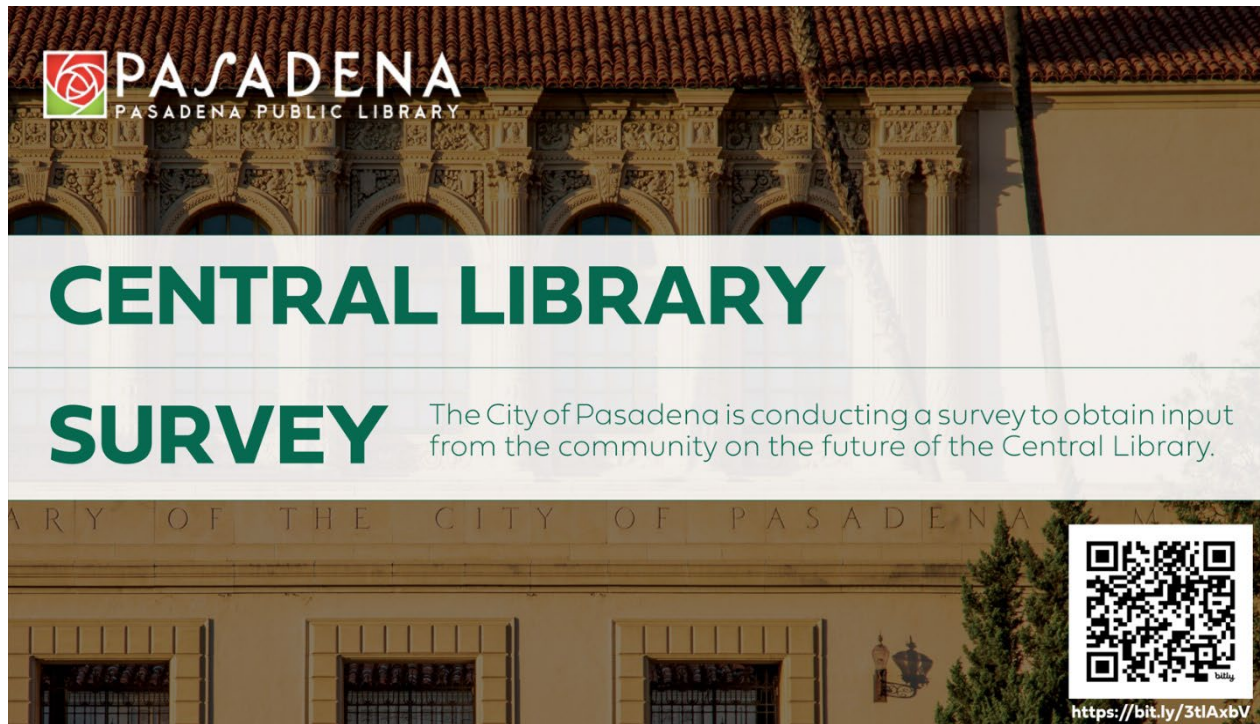





Community Outreach Efforts

Community Survey

- December 13, 2023 – Public survey posted on project webpage to solicit feedback re: programming and desired services.
 - > To date, received 321 responses
 - > Survey will remain open to allow the public to continue providing feedback


A promotional banner for a community survey. The background is a photograph of the Pasadena Central Library building. The banner includes the Pasadena Public Library logo, the text 'CENTRAL LIBRARY SURVEY', a description of the survey, and a QR code with a bit.ly link.

 **PASADENA**
PASADENA PUBLIC LIBRARY

CENTRAL LIBRARY

SURVEY

The City of Pasadena is conducting a survey to obtain input from the community on the future of the Central Library.



<https://bit.ly/3t1AxbV>



Community Outreach Efforts

Community Survey Results (so far)

Sampling of survey questions & responses:

6. Update outdated technology and bring it into the 21st century?



12. Display spaces for local artists?



7. Public spaces for community gatherings and events?



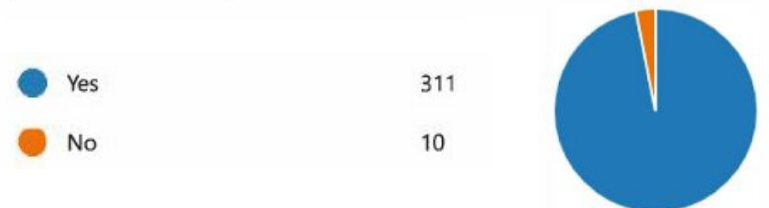
14. Recording studio space?



8. Workspace, study rooms, tutoring rooms?



18. Should the historical and architectural nature of the Central Library be preserved and repaired for the next 100 years of public use?





Department of Public Works

SCHEMATIC DESIGN UPDATE



PASADENA



Schematic Design Update

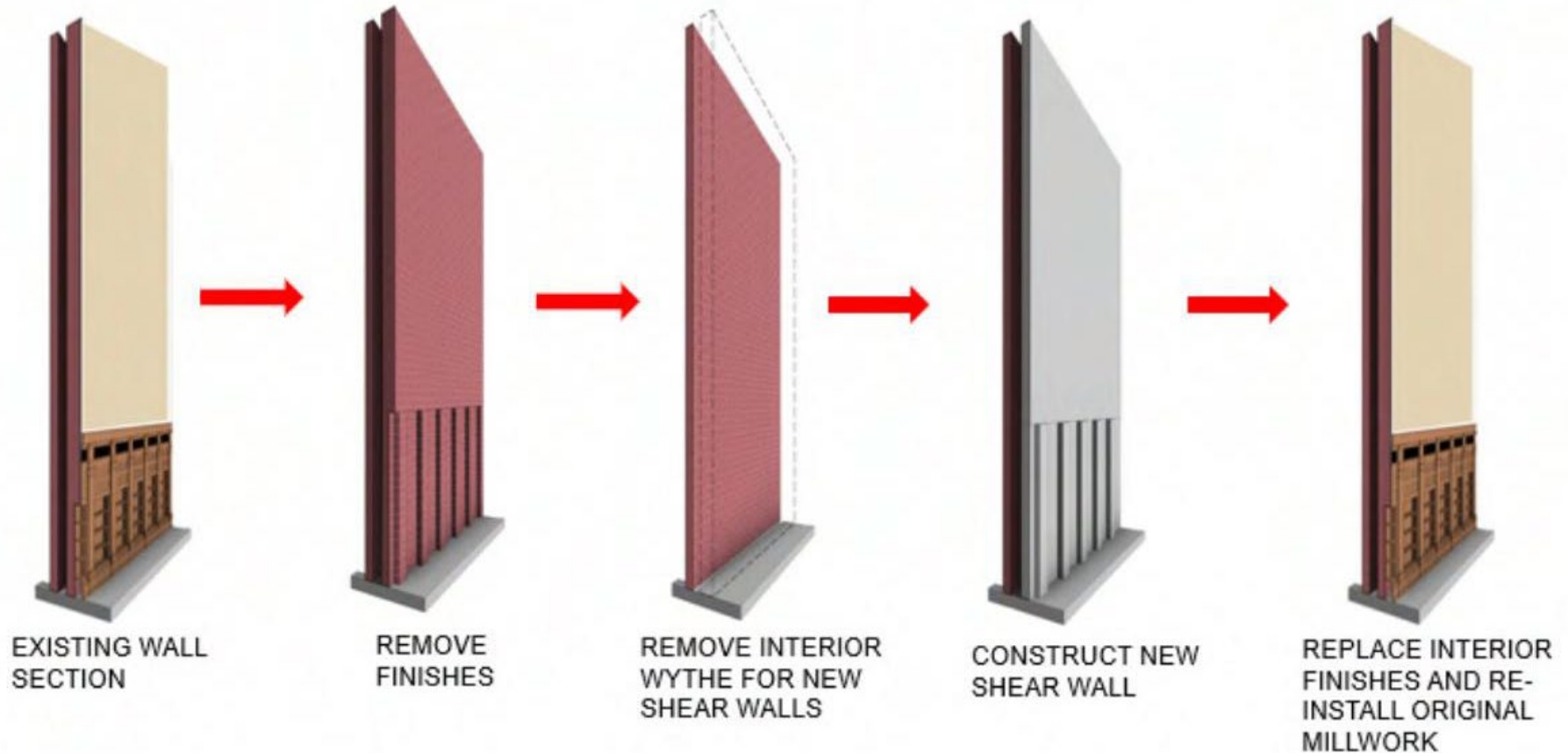
Project Goals and Objectives

- **EARTHQUAKE** Improve seismic performance to allow the building to have greater resilience to earthquakes
- **LIFE SAFETY** Take reasonable measures to assure that building occupants will be able to exit the building safely during an earthquake
- **HISTORIC** Preserve the building's historic fabric, its character defining features, and its historic listings
- **ACCESSIBILITY** Adopt universal access principles to accommodate different levels of ability and mobility
- **PUBLIC BENEFIT** Re-occupy building as quickly as reasonable so that patrons can have use of this asset
- **RISK** Mitigate potential for delays in schedule which could jeopardize the City's ability to fund the project
- **FUNCTION** Enhance performance of the spaces to accommodate the needs of library staff and patrons
- **FLEXIBILITY** Include the opportunity for the facility to be used differently in the future as needs change
- **UPGRADE** Replace or update outdated technology and critical building systems



Schematic Design Update

Shear Wall Approach Diagrams





Schematic Design Update

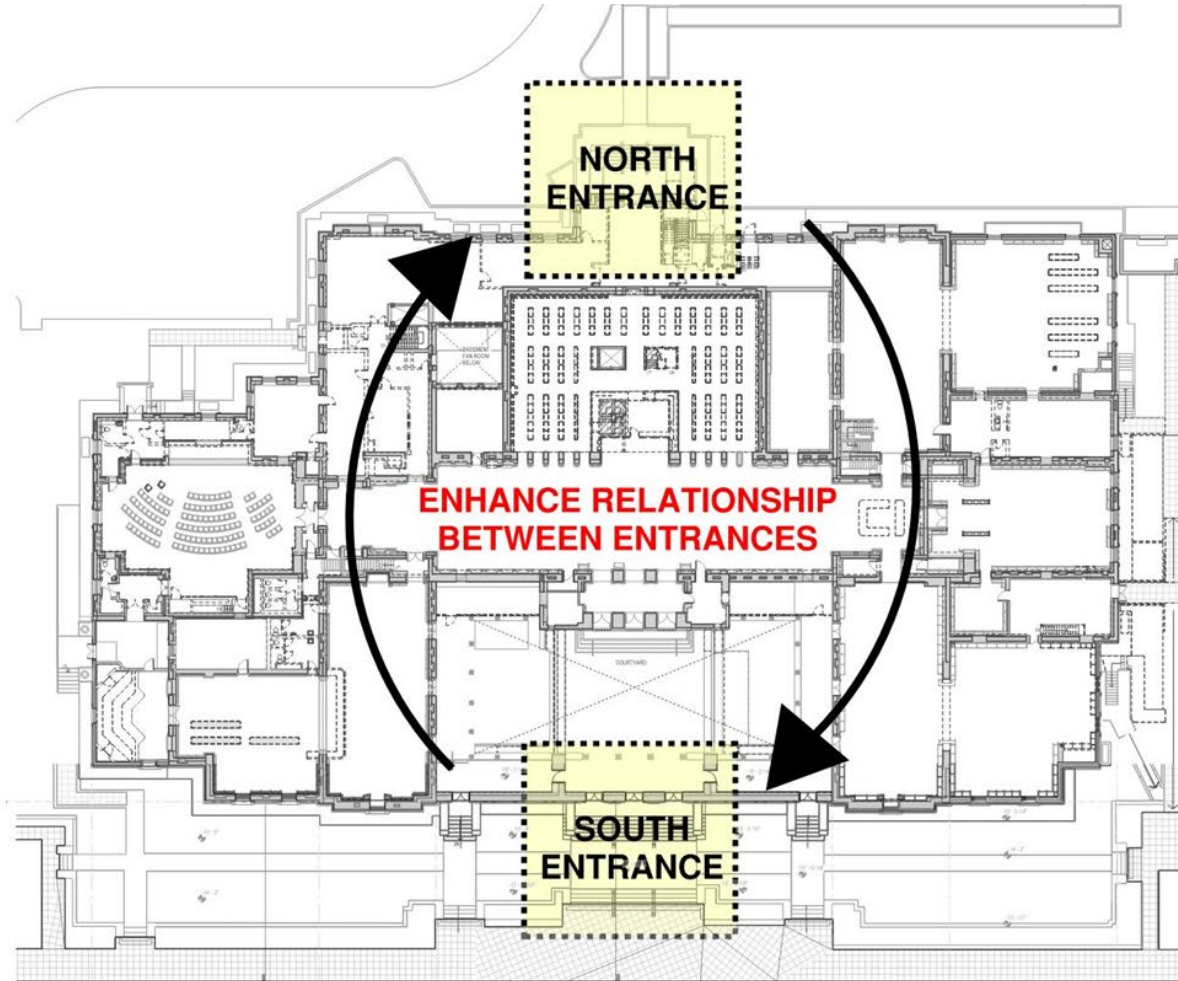
Key Features

- Main project drivers:
 - > Earthquake retrofit of building
 - > Life safety improvements
 - > Accessibility upgrades
 - > Preserving historic character
- Project leverages the efforts required to address other necessary or beneficial upgrades including:
 - > Foundation work provides ability to level floor in Lower Level for accessibility
 - > Removal of one wythe of brick allows replacement of old air conditioning ducts buried in wall
 - > Removal of 1980's metal stacks to accommodate the shear wall work allows natural light from existing skylights to reach main level in Circulation Hall
- New program spaces are concentrated in non-historic areas
- Flexible spaces accommodate a variety of current and future programs and services



Schematic Design Update

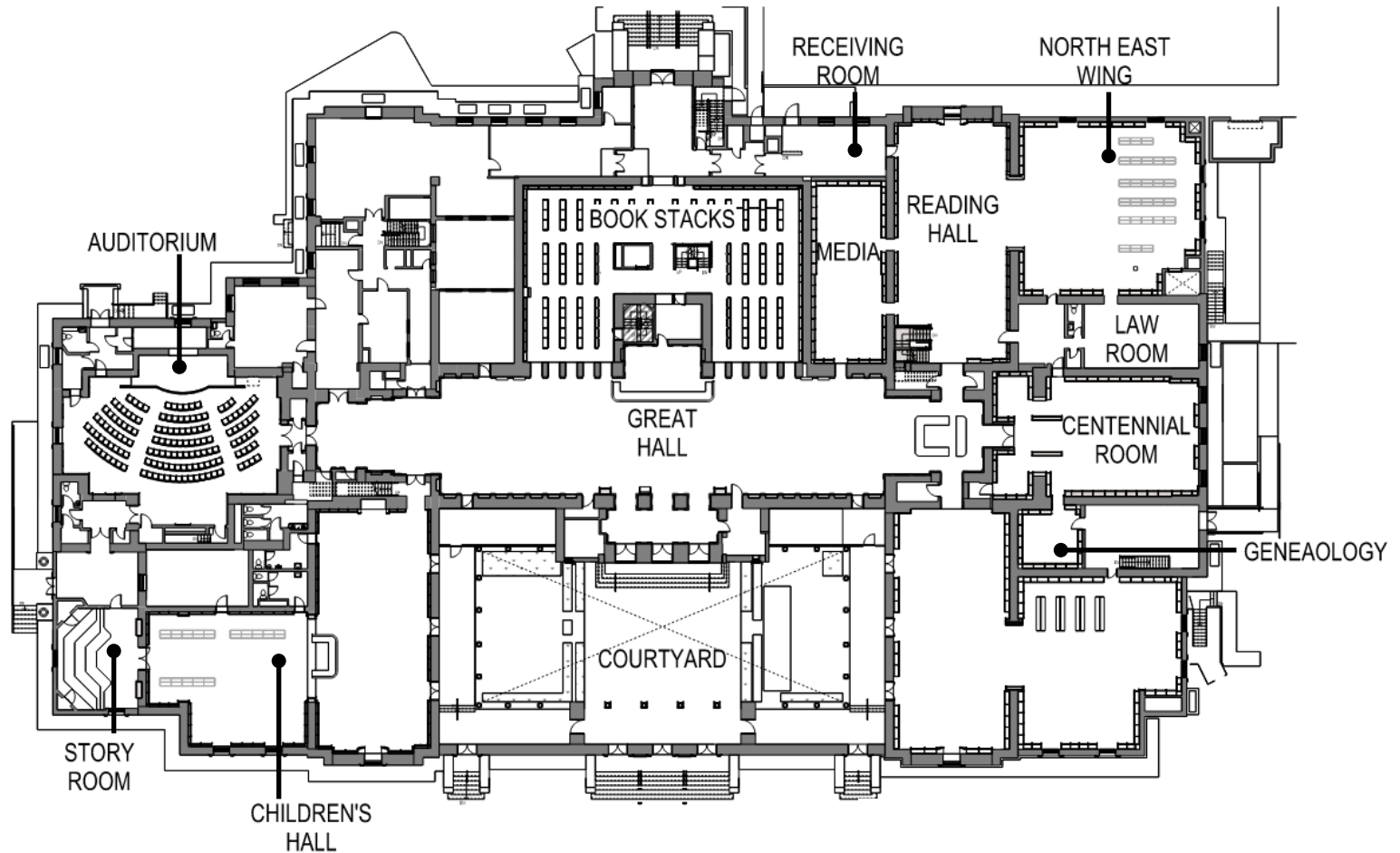
North / South Entrance Relationship





Schematic Design Update

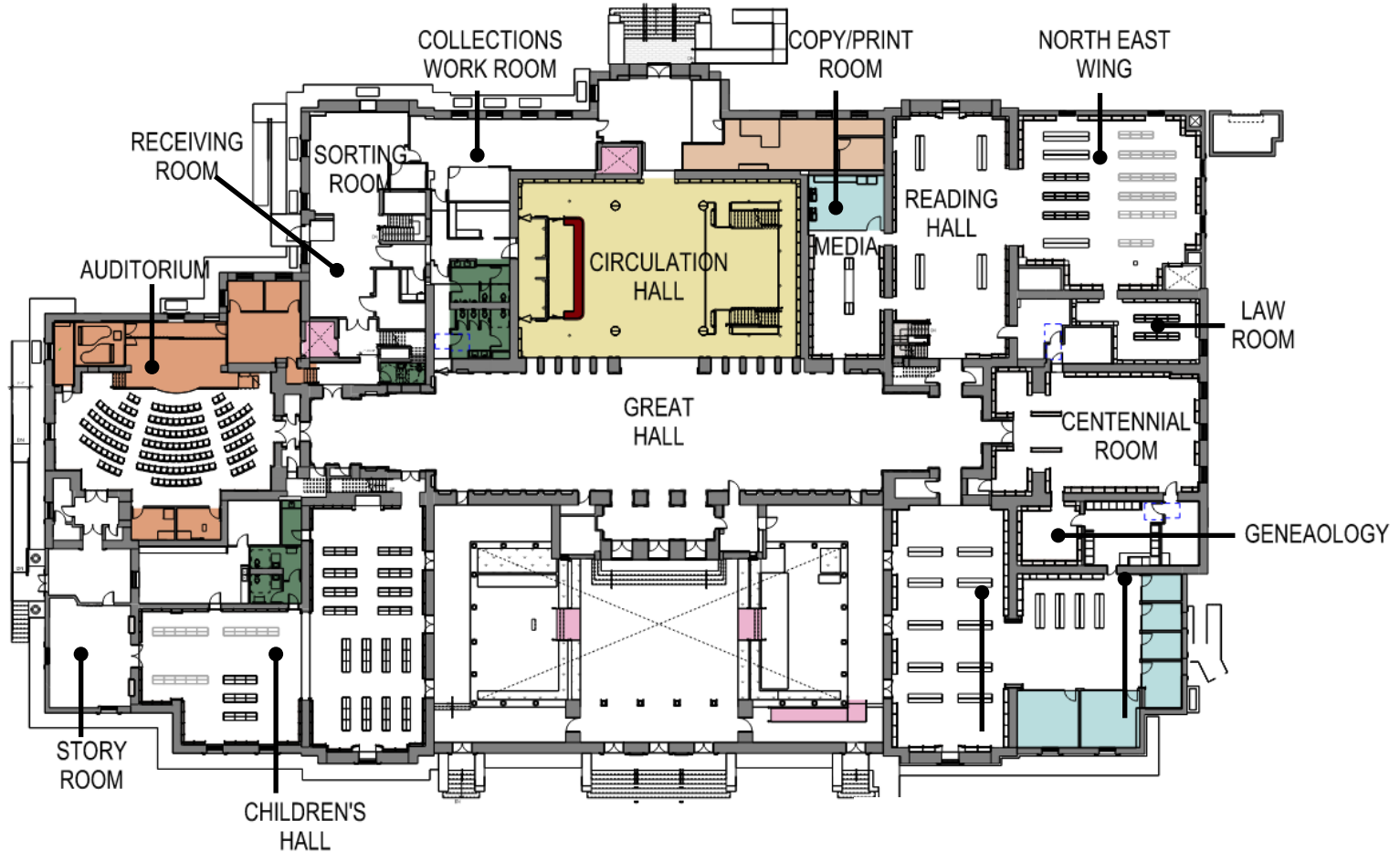
Main Level – Existing Layout





Schematic Design Update

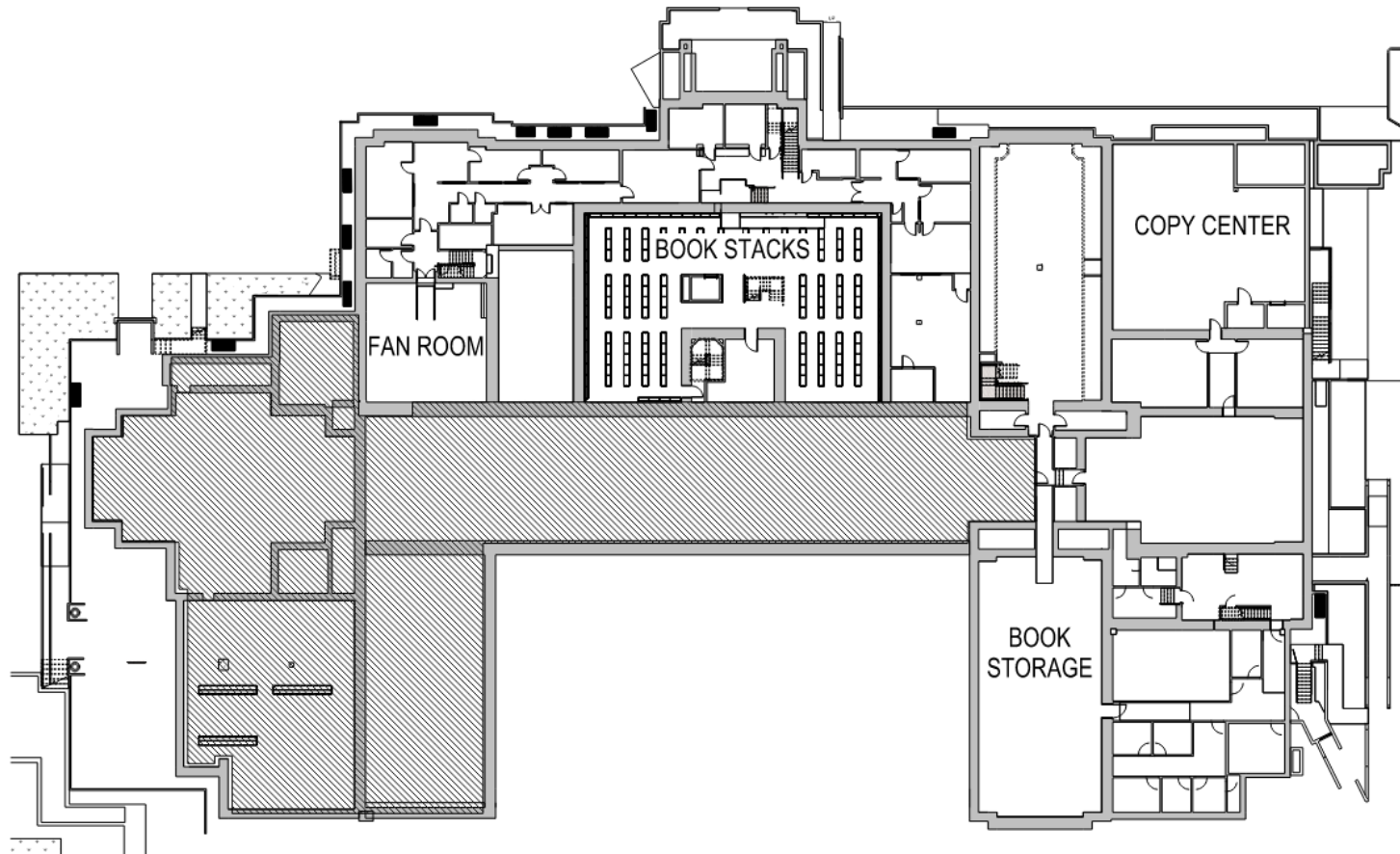
Main Level – Proposed Layout





Schematic Design Update

Lower Level – Existing Layout



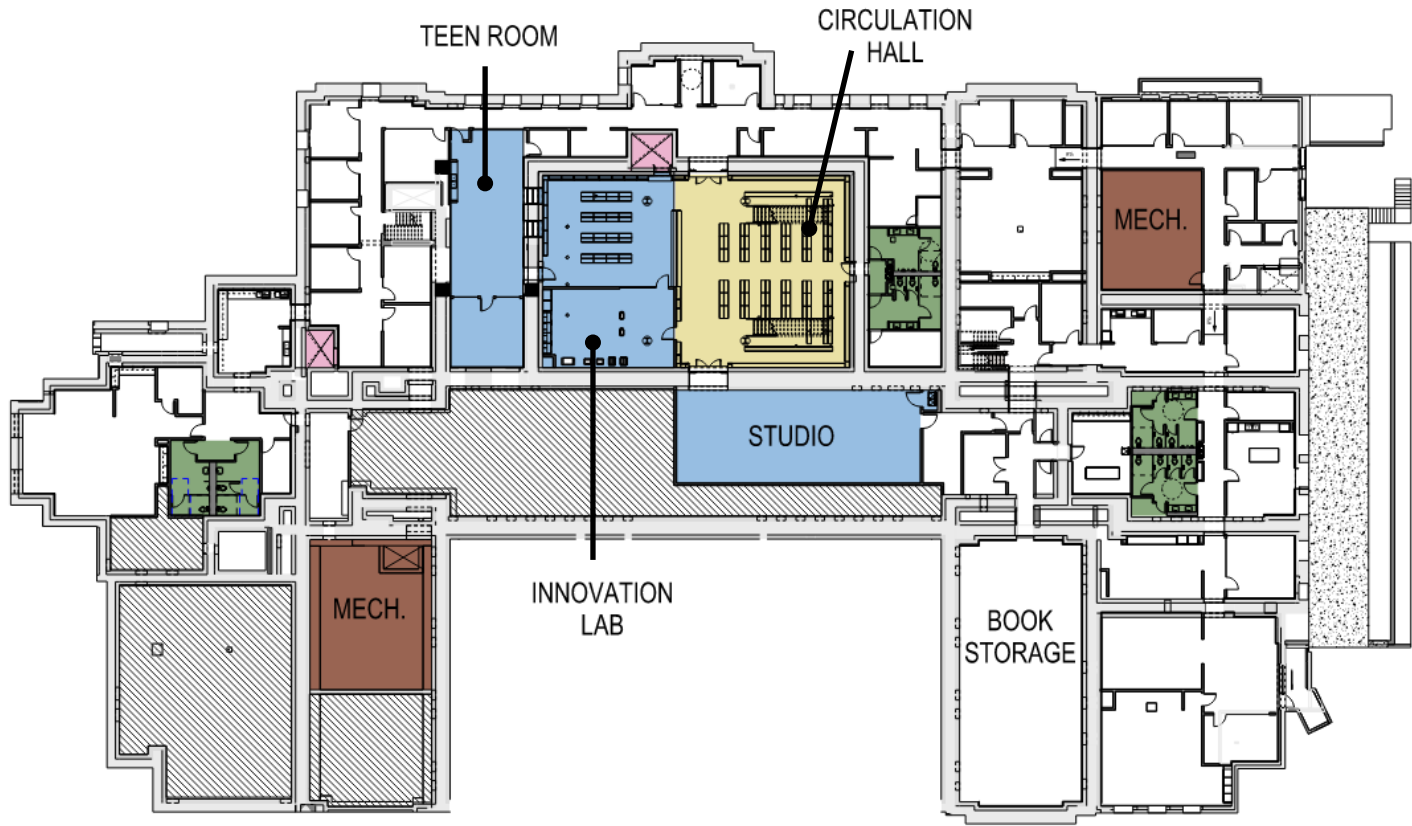


View from the Great Hall



Schematic Design Update

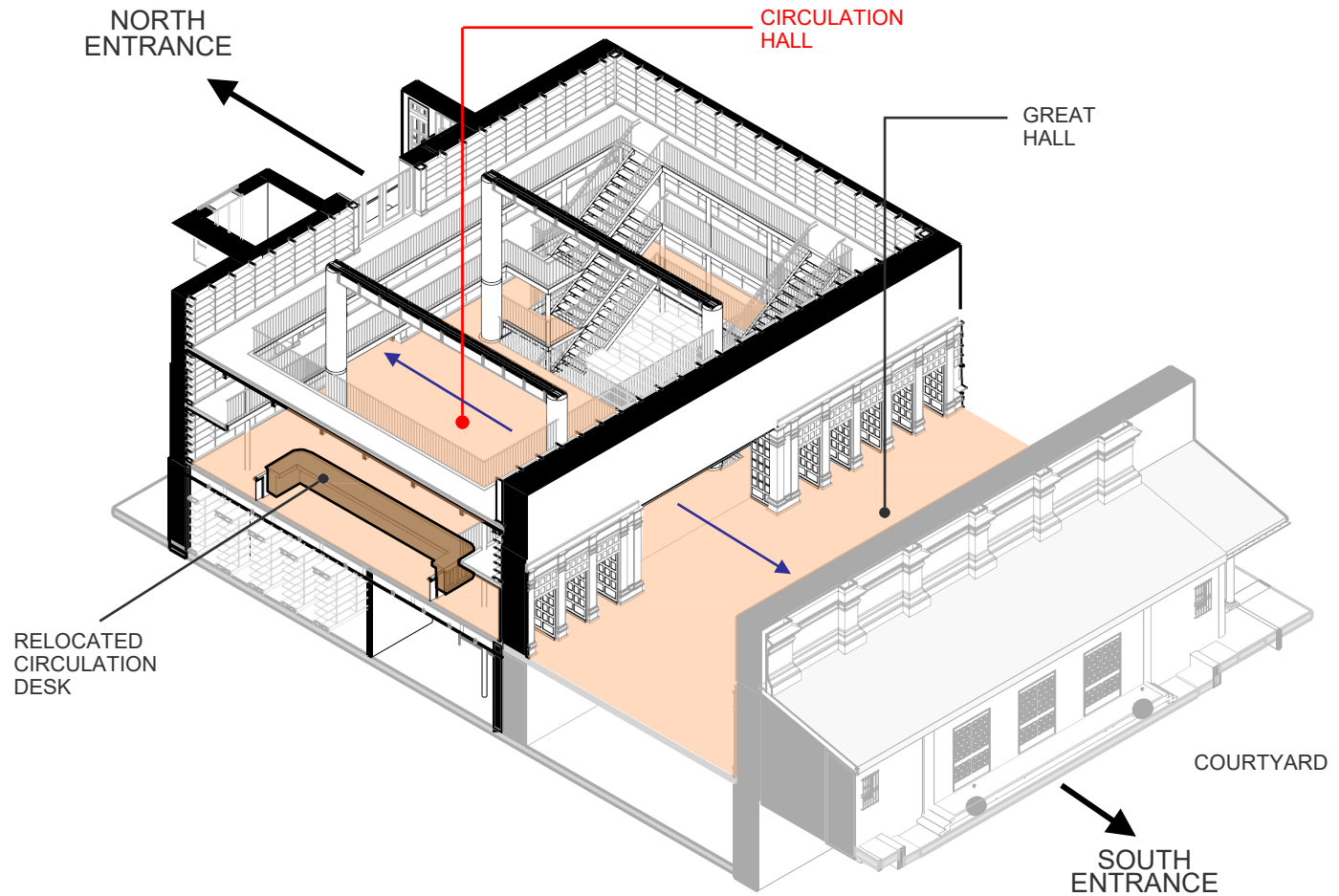
Lower Level – Proposed Layout





Schematic Design Update

Axonometric View of Circulation Hall and Great Hall





View from Circulation Desk into Circulation Hall



View from Circulation Desk into Circulation Hall

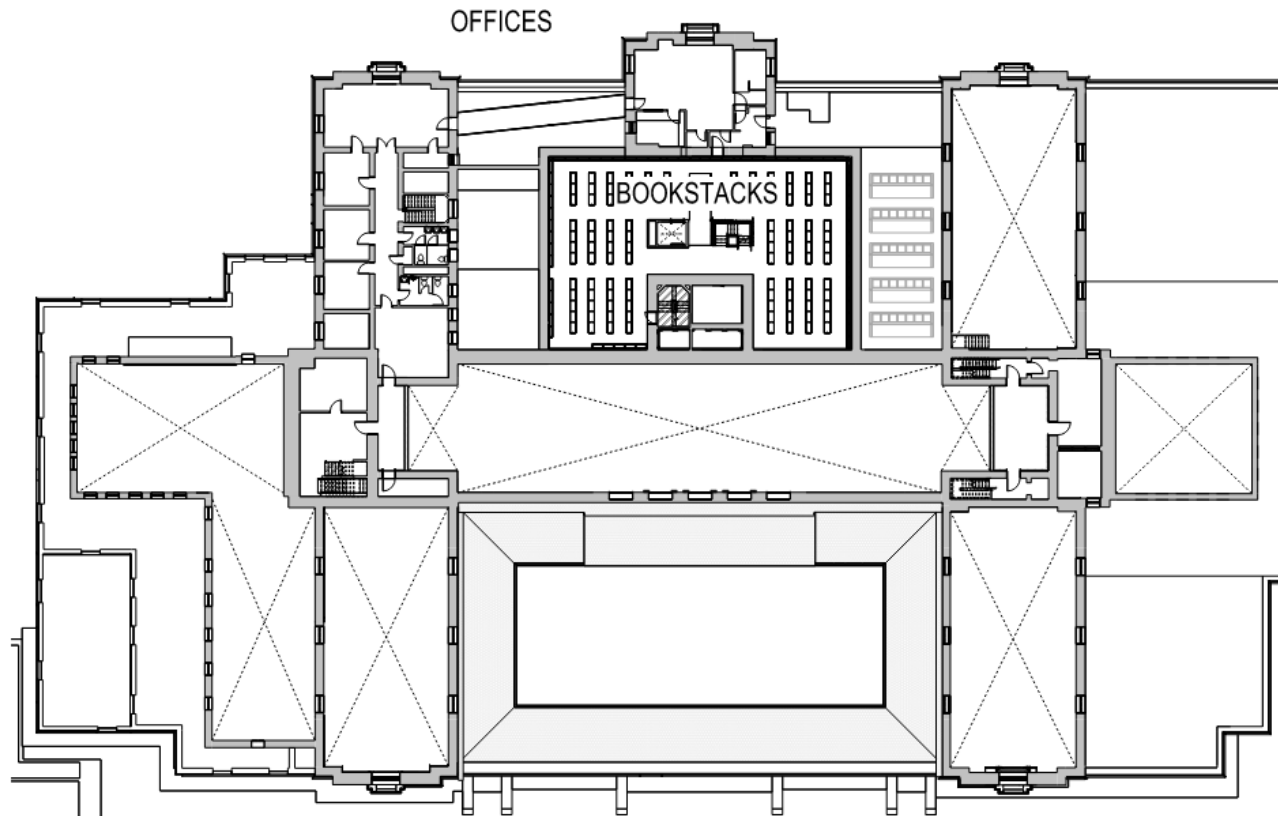


View looking into Lower Level from Circulation Hall



Schematic Design Update

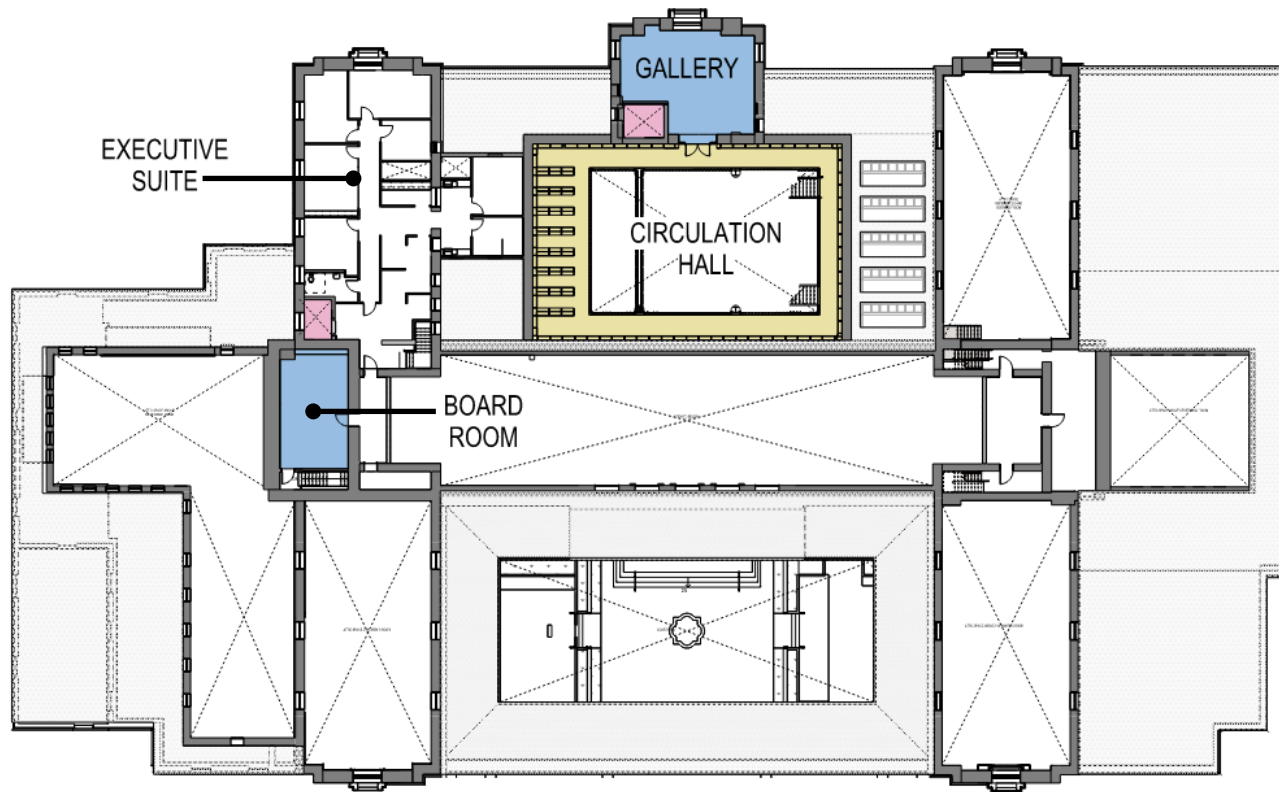
Second Level – Existing Layout





Schematic Design Update

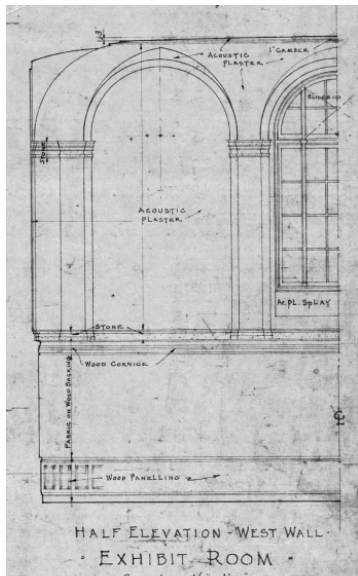
Second Level – Proposed Layout





Schematic Design Update

Original, Existing and Proposed Conditions at Boardroom



*Original Design -
2nd Floor @
West Balcony*



*Existing Condition -
2nd Floor*

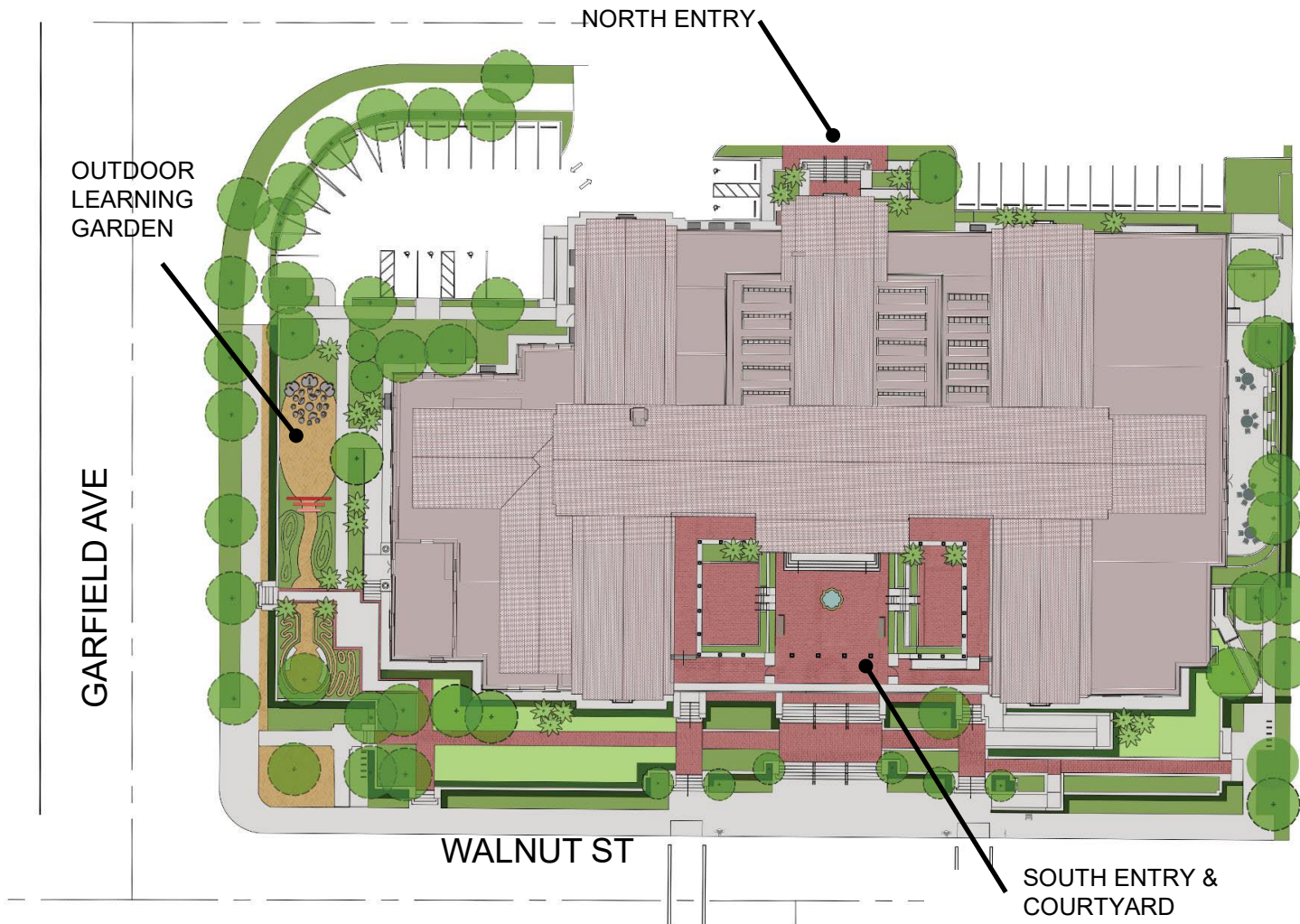


*Proposed - Return to original
character of space*



Schematic Design Update

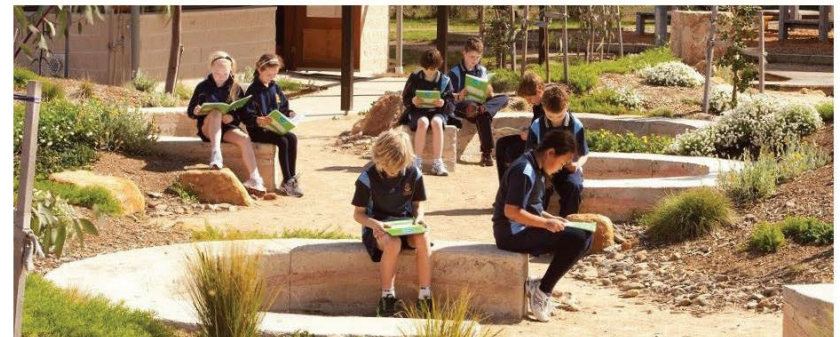
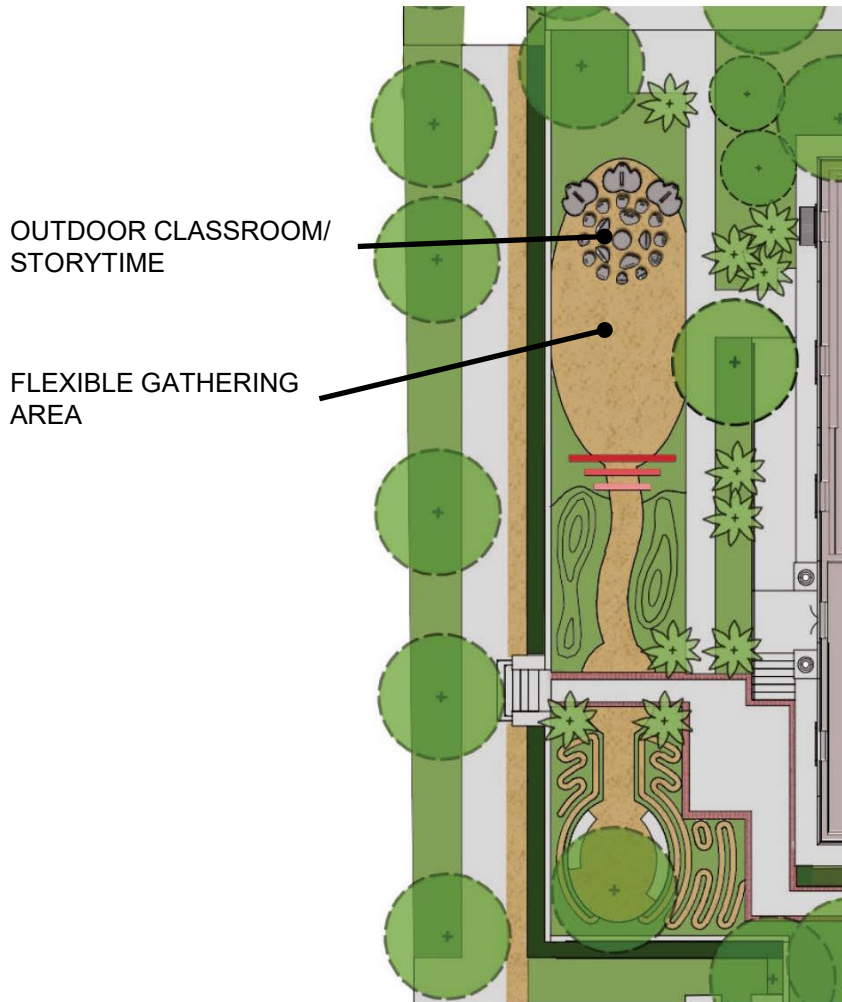
Site Plan





Schematic Design Update

Outdoor Learning Garden





Bird's eye view of North Entrance

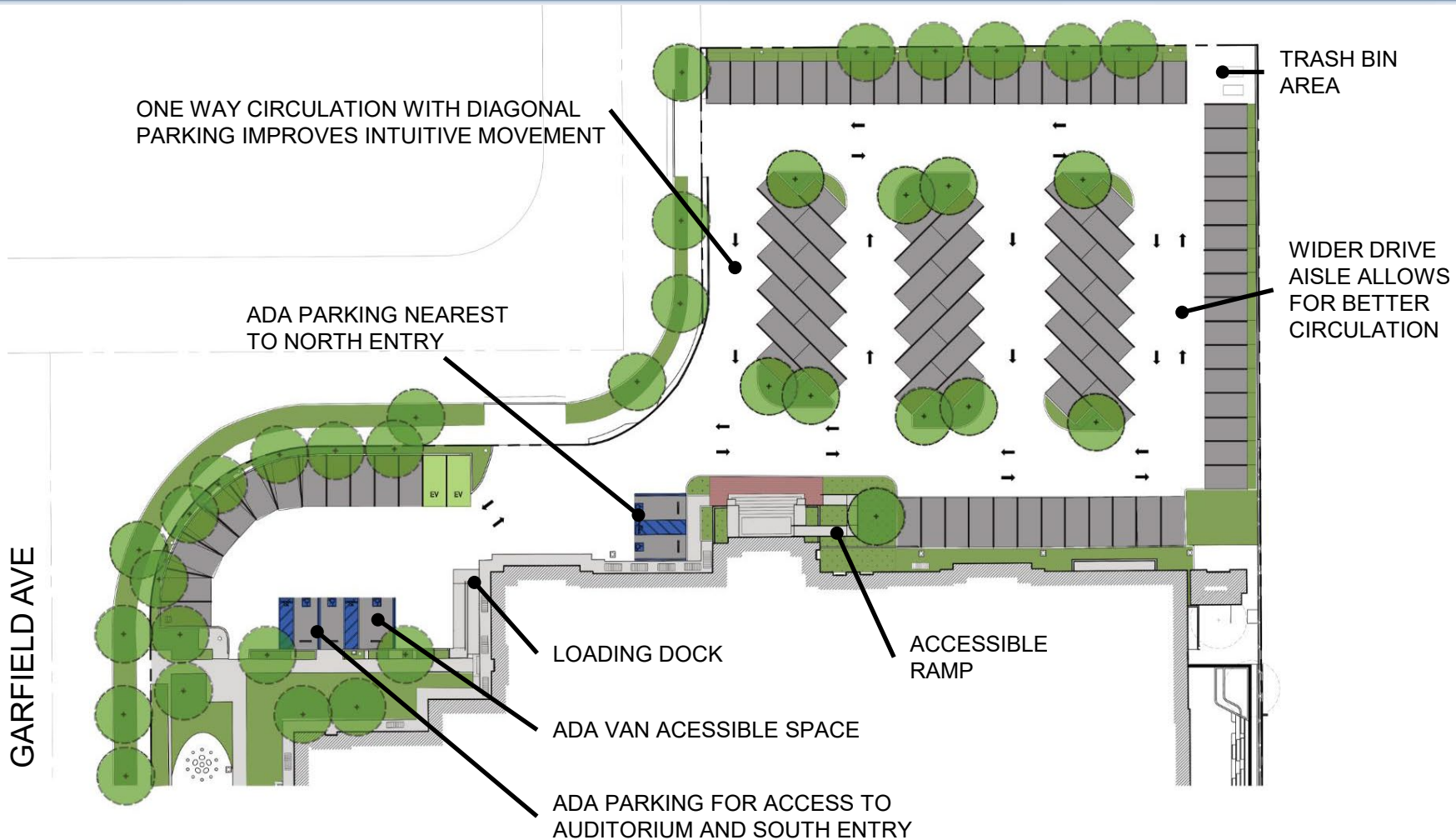


South Entry as seen from Walnut Avenue



Schematic Design Update

Updated Parking Lot Layout







NEXT STEPS





Next Steps

Project Timeline

March 2024	Complete 60% (Design Development) Plans and Cost Estimate
April 2024	Design and Cost Estimate Update to City Council
July 2024	Council Decision for Potential November 2024 Bond Measure
Spring 2025	Complete 100% (Construction Documents) Plans, Cost Estimate and Plan Check
Summer 2025	Bid and Construction Contract Award (pending funding)
Fall 2028	Anticipated Building Re-opening



Thank You!

For more information about the
Pasadena Library Central Library Retrofit and Renovations Project
refer to:

<https://www.pasadenapubliclibrary.net>

