



Devil's Gate Dam Update
Pasadena City Council Special Joint
Meeting with Supervisor Barger

March 29, 2023 – 8:30am



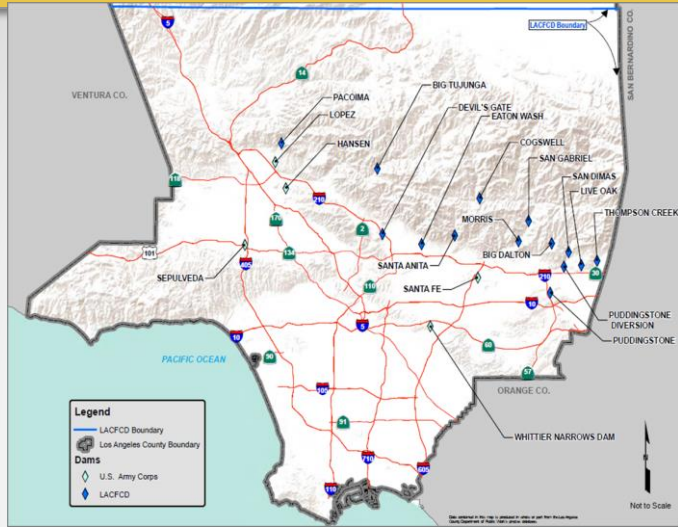
Public Works
OF ANGELES COUNTY



Agenda

- Sediment Removal & Habitat Restoration Update
- Annual Maintenance
- Southeast Entrance
- Q&A

Los Angeles County Flood Control District



LACFCD Mission:

- To Provide for the control and conservation of stormwaters and other waste waters of the District.
- To conserve such waters for beneficial use.



LACFCD encompasses more than 3,000 square miles, 86 cities, and operates a complex flood protection and water conservation system including:

- 14 Major Dams
- 172 Debris Basins
- 27 Spreading Grounds
- 483 miles of Open Channels
- 3,330 miles of Underground Storm Drains
- 82,000 Catch Basins
- 3 Seawater Intrusion Barriers
- 27 Sediment Placement Sites
- 47 Pump Plants

Project Update



History

- Station fire burned majority of Devil's Gate watershed
- ~1.3 million CY of sediment removed = 3 rose bowls
- Completed 9/15/21, 1 year ahead of schedule
- Reservoir configured for annual cleanouts
- Facility entrance reconfigured to divert trucks away from neighborhoods
- Restoring 70 acres of habitat

Habitat Restoration



- Nearly 70 acres of habitat have been created, restored, and enhanced
- 33,500 native plants installed
- 8 acres of hydroseeding
- ~200 oak tree acorns planted
- >95% plant survivorship
- <1% weed & invasive cover
- Observed native endangered species
- Phase 1 & 2 completed
- Phase 3 – to be completed May 2023

Habitat Restoration



Johnson Field - 2019



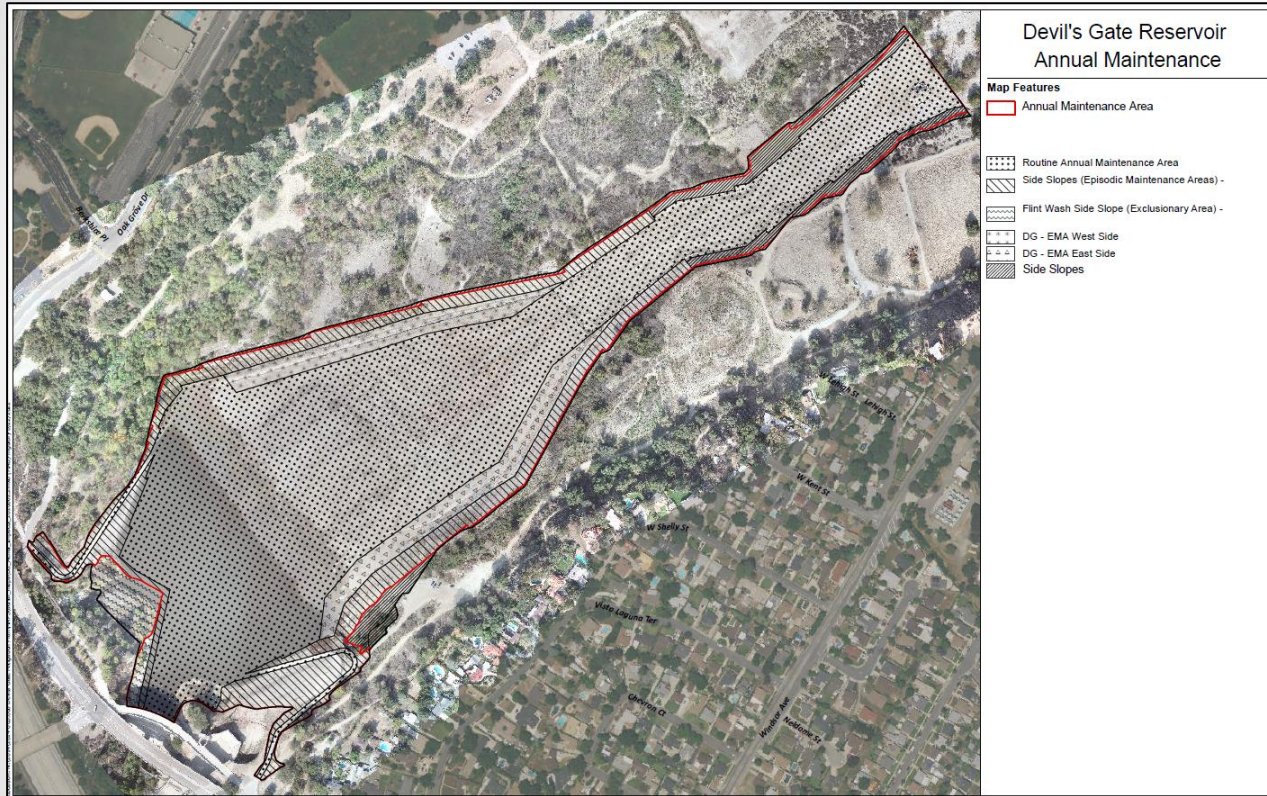
Johnson Field - 2022

Habitat Restoration



Johnson Field After Restoration - September 2022

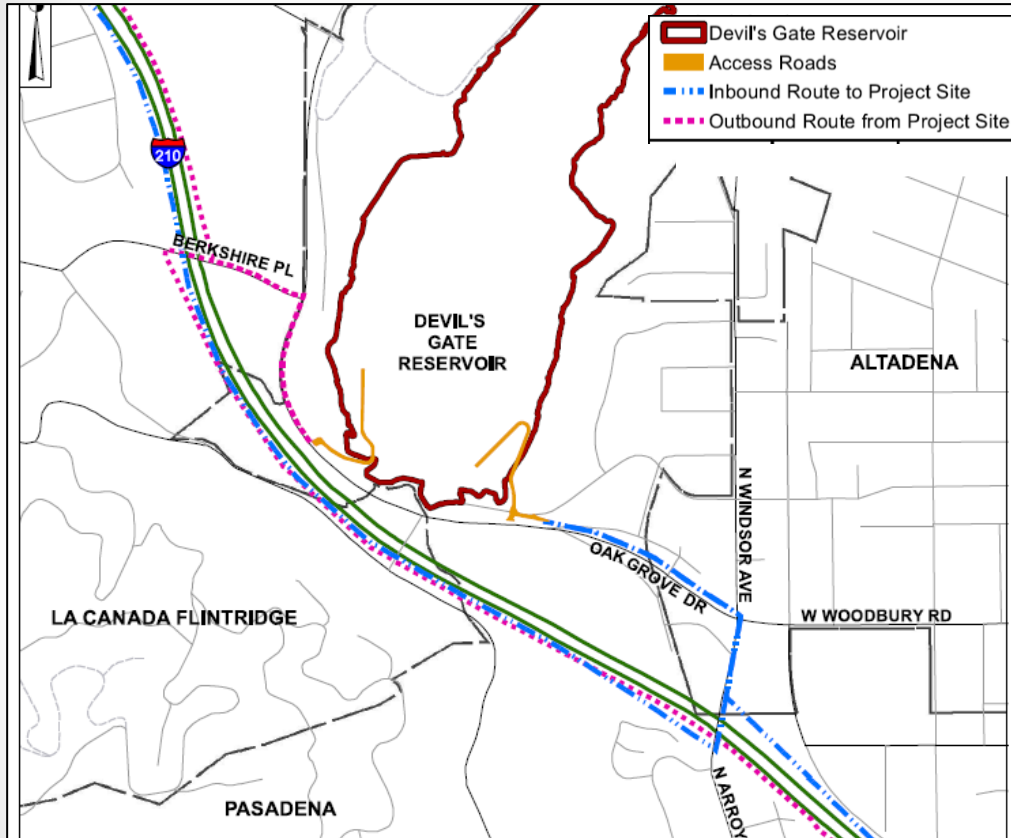
Annual Maintenance



Scope & Schedule

- Each year, the seasonal pool (pending streamflow) will be drained by July 1
- Removal of vegetation from the Routine Annual Maintenance area after the reservoir dries
- Excess sediment that was deposited during the storm season will be hauled offsite in late summer/early fall
- Restore eroded slopes

Annual Maintenance



Haul Routes

Trucks accessing Project site from I-210:

- Exit Windsor Avenue/Arroyo Boulevard
- Turn north at Windsor Avenue
- Turn left onto WB Oak Grove Drive
- Enter eastern reservoir access road.

Loaded trucks:

- Exit western access road,
- Turn right onto WB Oak Grove Drive
- Turn left onto WB Berkshire Place
- Take EB I-210 to disposal sites in Azusa and Irwindale OR
- WB I-210 westbound to disposal sites in San Fernando Valley.

Annual Maintenance



2022 Annual Maintenance

- September to October
- 25,000 CY of sediment removed



- Outreach – Coordination with City for hauling operations; flyers mailed to adjacent community; eblast to mailer list; published on County website
- Anticipating larger effort this year due to higher rainfall 2022=14” 2023 = 37”

Southeast Entrance



- Collaboration
 - 4 virtual community meetings & on site open house from 2021 - 22
 - Ongoing coordination with City of Pasadena- Parks, Public Works, and DOT
 - Renderings posted to website
- Next Steps
 - Develop 60% design plans
 - Update Pasadena & community with progress
- Timeline
 - Final plans by early 2024
 - Target start of construction – Fall/Winter 2024

Southeast Entrance



Open House Meeting

- August 17, 2022
- County & City of Pasadena Hosting
- Well attended and received

Southeast Entrance



- New oak trees above the walkway
- Improved fencing along Oak Grove
- Lower elevation of walkway
- Earthen berm to create natural separation from the roadway
- Bioswale for runoff, native plantings
- Enhanced signage

Q&A

Devil's Gate Reservoir Restoration Project

For More Information:

Subscribe to our e-mail list to receive updates on the project.



DevilsGateProject.com



devilsgateproject@pw.lacounty.gov



Hotline: (626) 458-2507