

# Pasadena Evacuation Plan

City Council

January 23, 2023

Item #21





# Introduction

Fire Department



City of Pasadena Fire Department

## **Evacuation Plan**



# Why plan?

Fire Department





# Evacuation Planning Process

Fire Department

- In August, a kickoff meeting was held
- Feedback was obtained through reviewing relevant emergency management literature
  - > E.G., published studies, FEMA documentation and CalOES guidance
- Several city departments were interviewed to understand how the city operates
- Outreach to city stakeholders



# Incorporating the Whole Community

Fire Department

- Disaster loss data shows certain community members suffer from higher losses
- In 2012, FEMA introduced a Whole Community emergency management strategy to:
  - > coordinate all levels of government
  - > increase individual preparedness
  - > engage with members of the community as vital partners to strengthen resiliency and security



# Emergency Management

Fire Department





# Pasadena Evacuation Plan

Fire Department

- The City of Pasadena Evacuation Plan streamlines the evacuation process by:
  - > providing an organized framework for the activities involved in coordinating
- Designed to help the city coordinate its response and collaborate with federal, state, and other municipal governments, as well as non-governmental organizations



# Incorporating the Whole Community

Fire Department

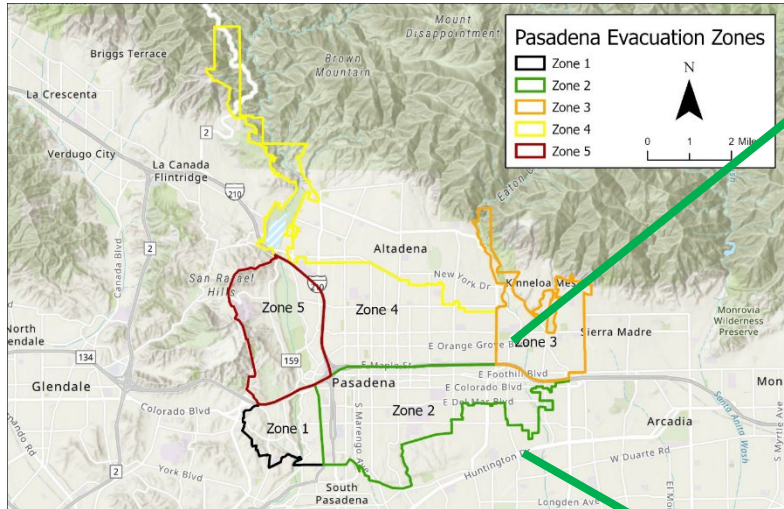
- The Whole Community Approach to Emergency Management engages government at all levels with communities and individuals when responding to disasters
  - > Engaged multiple neighborhood associations.
  - > Hosted a meeting to discuss disabled and access and functional needs community members to ask for their feedback





# Questions

## Fire Department



Zone 2 starts on Orange Grove Boulevard follows the city boundary in the south along the City of San Marino. The zone moves up the boundary with East Pasadena until the 210 freeway and follows it until Orange Grove Boulevard is hit.

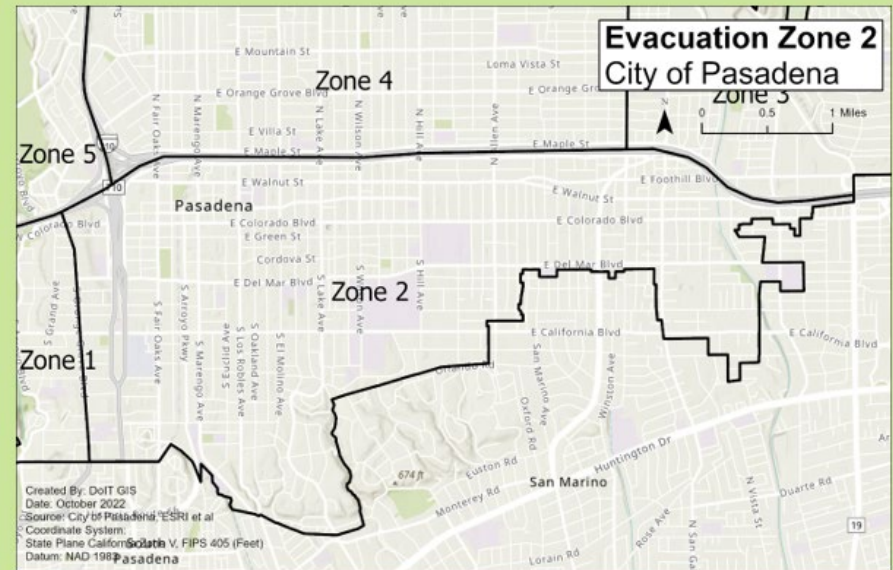


Figure 6: Map of Pasadena Evacuation Zone 2

The main evacuation routes will be the 210 freeway and the 110 freeway. Avenues and boulevards will be used to alleviate traffic.

- People north of Del Mar Blvd. will head towards the 210 freeway and evacuate east.
- Colorado and California Boulevards will be used to evacuate people east.
- Marengo Avenue, Sierra Madre Blvd. will be used with the 110 freeway to evacuate people south.