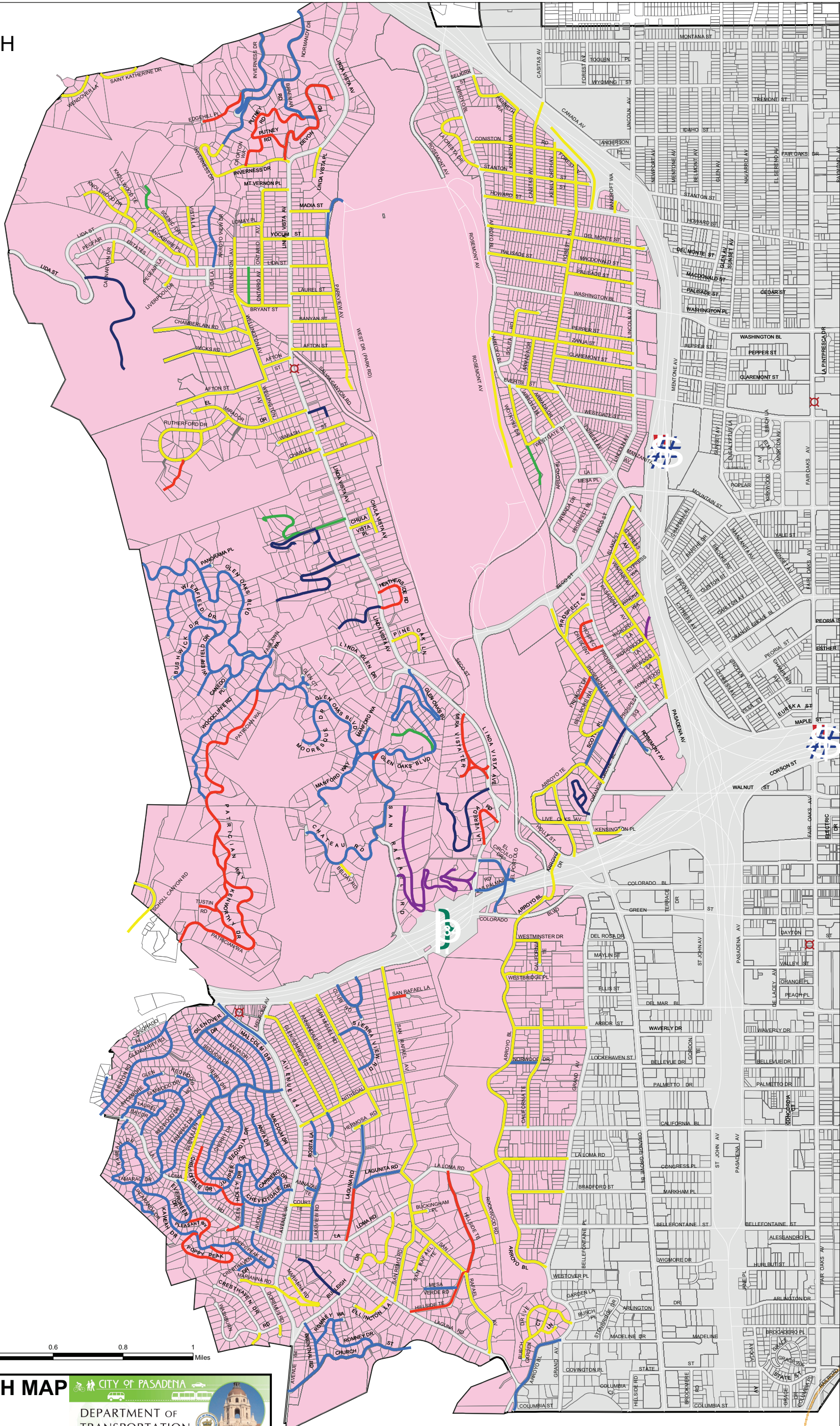


ATTACHMENT H



0 0.1 0.2 0.4 0.6 0.8 1 Miles

STREET WIDTH MAP

CITY OF PASADENA
DEPARTMENT OF TRANSPORTATION

Coordinates System Information:
 State Plane California Zone V, FIPS 405 (Feet Datum: NAD 1983)
 Disclaimer: The maps and associated data are provided without warranty of kind.
 Any reuse of this information is prohibited. © 2009, City of Pasadena

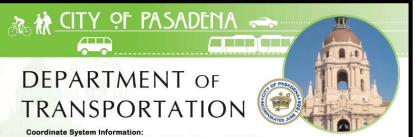
- Gold Line
- Pasadena Fire Station
- Private Street (street width 0 - 15 feet)
- Private Street (street width 16 - 20 feet)
- Private Street (street width 21 - 30 feet)
- Roadway width (street width 0 - 20 feet)
- Roadway width (street width 21 - 26 feet)
- Roadway width (street width 27 - 32 feet)
- Fire Region Area

TRAFFIC MANAGEMENT CENTER MAY 7, 2009 / DRAWING NUMBER CAD61006.MXD / BY DAVID PHAN/PAUL CURA

Streets with widths 27 feet or greater are restricted on one side.
 Streets with widths less than 27 feet are restricted on both sides.
 These maps are for illustration only. Verify parking based on posted parking signs.

See complete Council Agenda Report at http://www.cityofpasadena.net/fire/red_flag/

STREET WIDTH MAP



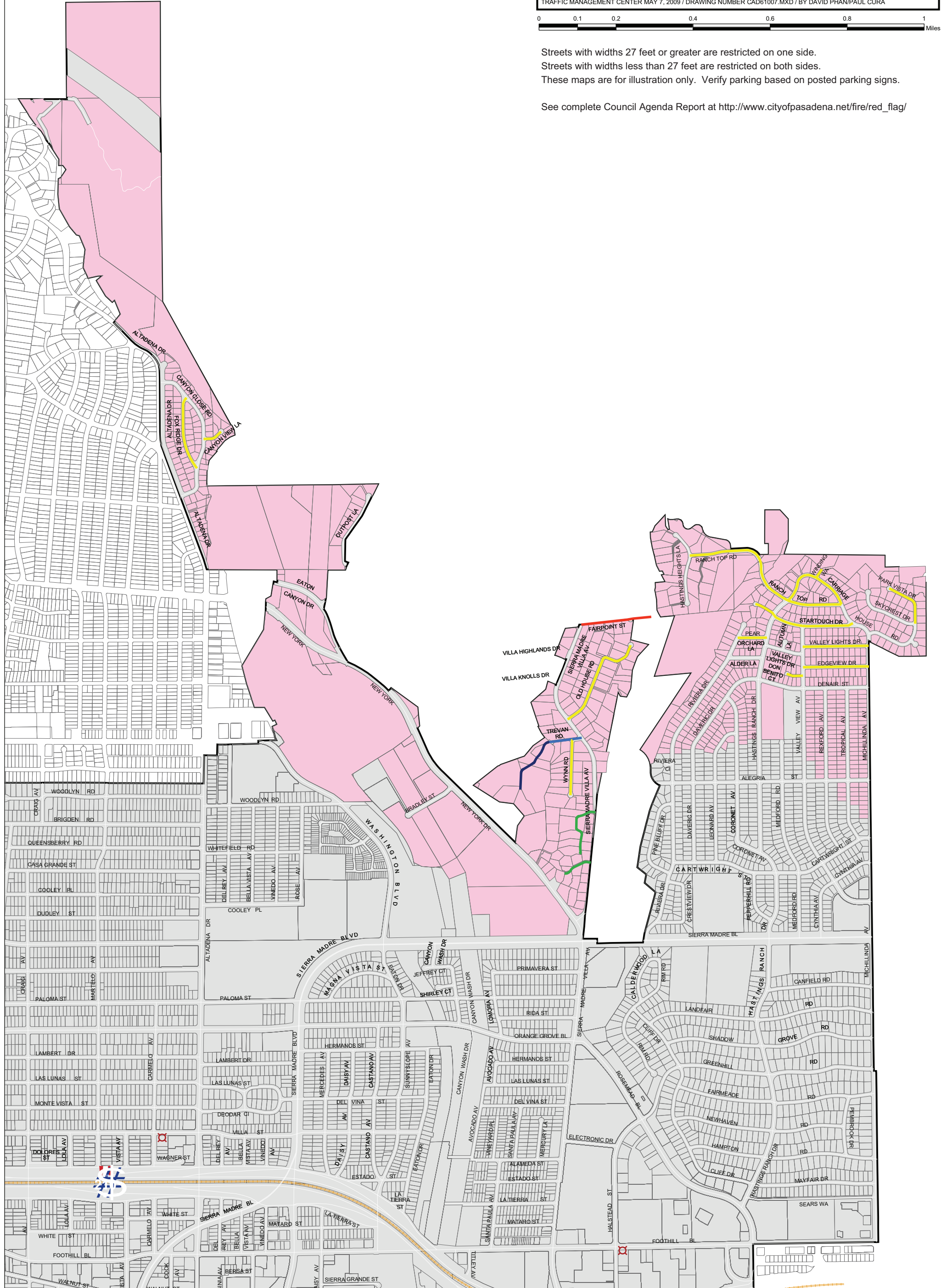
- Gold Line
- Pasadena Fire Station
- Private Street (street width 0 - 15 feet)
- Private Street (street width 16 - 20 feet)
- Private Street (street width 21 - 30 feet)
- Roadway width (street width 0 - 20 feet)
- Roadway width (street width 21 - 26 feet)
- Roadway width (street width 27 - 32 feet)
- Fire Region Area

DEPARTMENT OF TRANSPORTATION

Coordinate System Information:
State Plane California Zone V, FIPS 405 (Feet) Datum: NAD 1983

Disclaimer: The maps and associated data are provided without warranty of kind. Any reuse of this information is prohibited. © 2006, City of Pasadena

TRAFFIC MANAGEMENT CENTER MAY 7, 2009 / DRAWING NUMBER CAD61007.MXD / BY DAVID PHAN/PAUL CURA



Streets with widths 27 feet or greater are restricted on one side.
Streets with widths less than 27 feet are restricted on both sides.
These maps are for illustration only. Verify parking based on posted parking signs.

See complete Council Agenda Report at http://www.cityofpasadena.net/fire/red_flag/