



1500 N. LOS ROBLES AVE: UPPER BALCONY, FRONT ELEVATION



1500 N. LOS ROBLES AVE: FRONT ELEVATION



1500 N. LOS ROBLES AVE: FRONT ELEVATION



1500 N. LOS ROBLES AVE: LOOKING EAST ALONG SOUTH YARD DRIVEWAY



1500 N. LOS ROBLES AVE: UPPER BALCONY, NORTHWEST CORNER



1500 N. LOS ROBLES AVE: FRONT DOOR ENTRY



1500 N. LOS ROBLES AVE: FRONT PORCH WINDOWS



1500 N. LOS ROBLES AVE: FRONT PORCH WINDOWS



1500 N. LOS ROBLES AVE: FRONT PORCH PIER AND POST DETAIL WITH PORTE COCHERE TO THE LEFT



1500 N. LOS ROBLES AVE: FRONT PORCH PIER AND POST DETAIL WITH PORTE COCHERE TO THE RIGHT



1500 N. LOS ROBLES AVE: PORTE COCHERE



1500 N. LOS ROBLES AVE: UPPER BALCONY LOOKING WEST WITH PORTE COCHERE IN FOREGROUND



1500 N. LOS ROBLES AVE: SOUTH SIDE ELEVATION ALONG DRIVEWAY, TOWARDS REAR YARD



1500 N. LOS ROBLES AVE: SOUTH SIDE ELEVATION ALONG DRIVEWAY, LOOKING WEST



1500 N. LOS ROBLES AVE: NORTH SIDE ELEVATION LOOKING AT FRONT NORTHWEST CORNER OF HOUSE



1500 N. LOS ROBLES AVE: NORTH SIDE ELEVATION WITH SIDE PORCH AND UPPER FLOOR ADDITION



1500 N. LOS ROBLES AVE: REAR ELEVATION



1500 N. LOS ROBLES AVE: REAR ELEVATION LOOKING AT NORTHEAST REAR CORNER OF HOUSE



1500 N. LOS ROBLES AVE: ORIGINAL DETACHED GARAGE



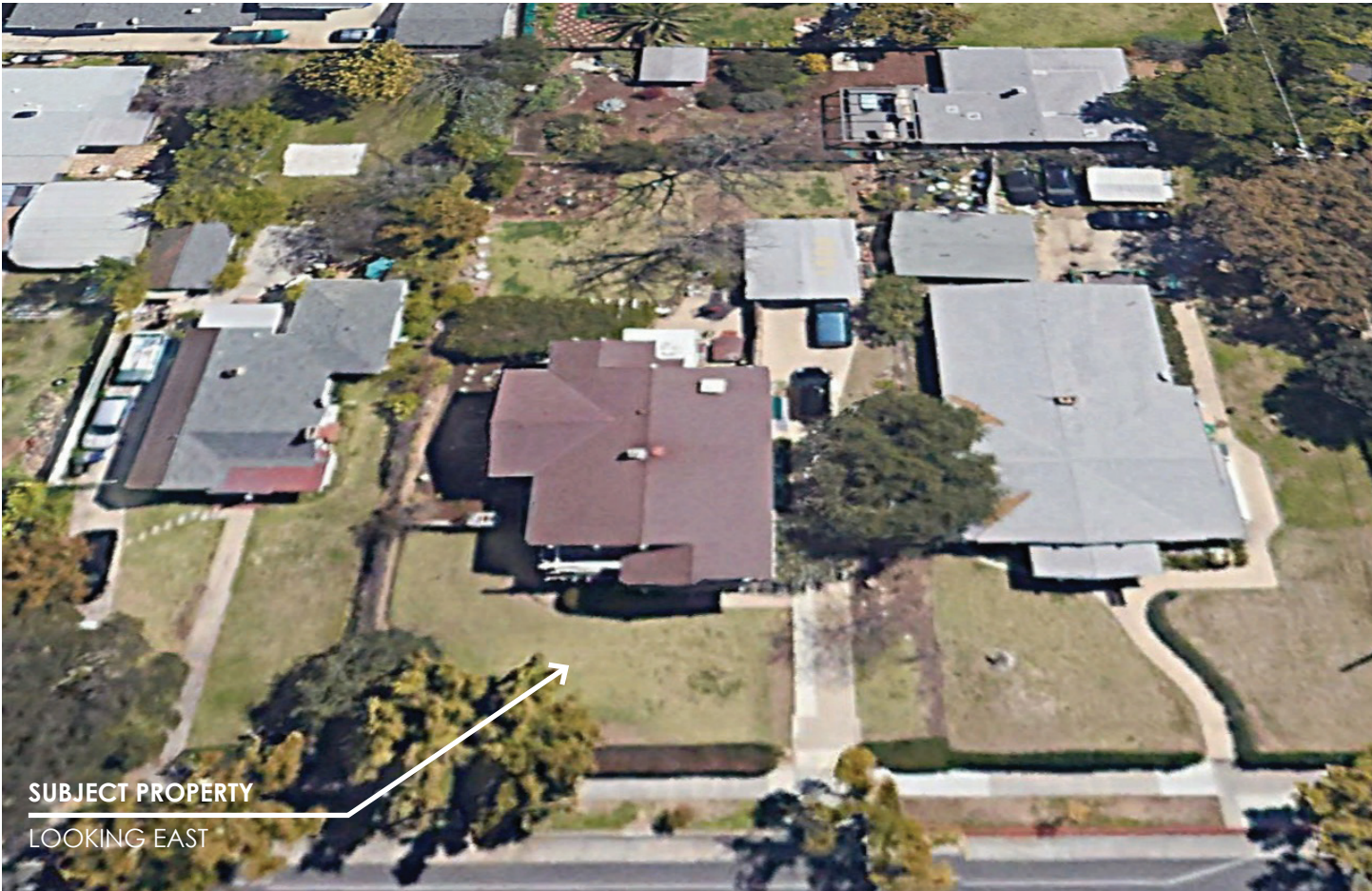
1500 N. LOS ROBLES AVE: REAR YARD PERGOLA



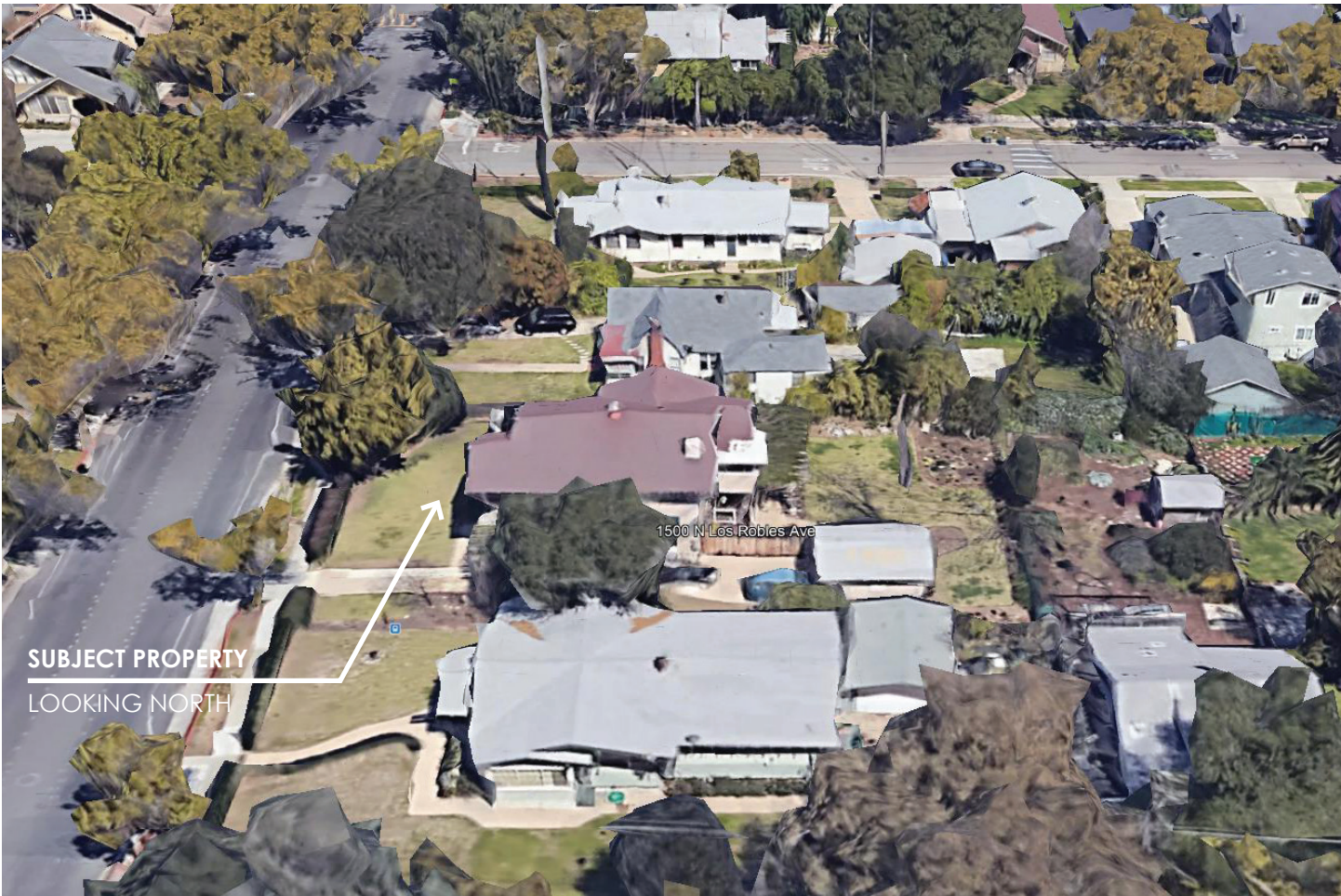
1500 N. LOS ROBLES AVE: REAR YARD PERGOLA LOOKING NORTH



1500 N. LOS ROBLES AVE: REAR YARD PERGOLA AT NORTH END

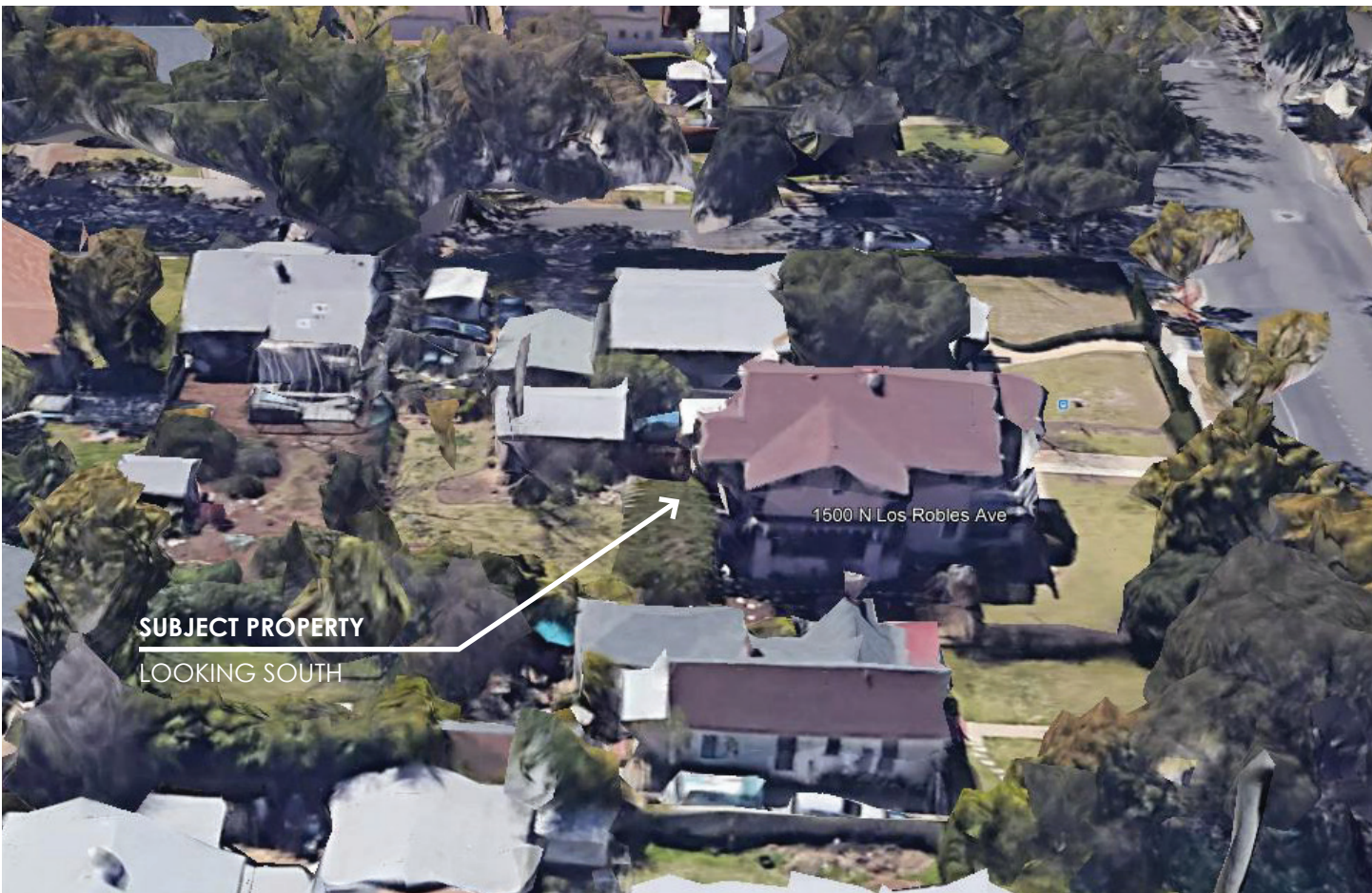


1500 N. LOS ROBLES: GOOGLE EARTH AERIAL VIEWS



SUBJECT PROPERTY
LOOKING NORTH

1500 N Los Robles Ave



SUBJECT PROPERTY
LOOKING SOUTH

1500 N Los Robles Ave