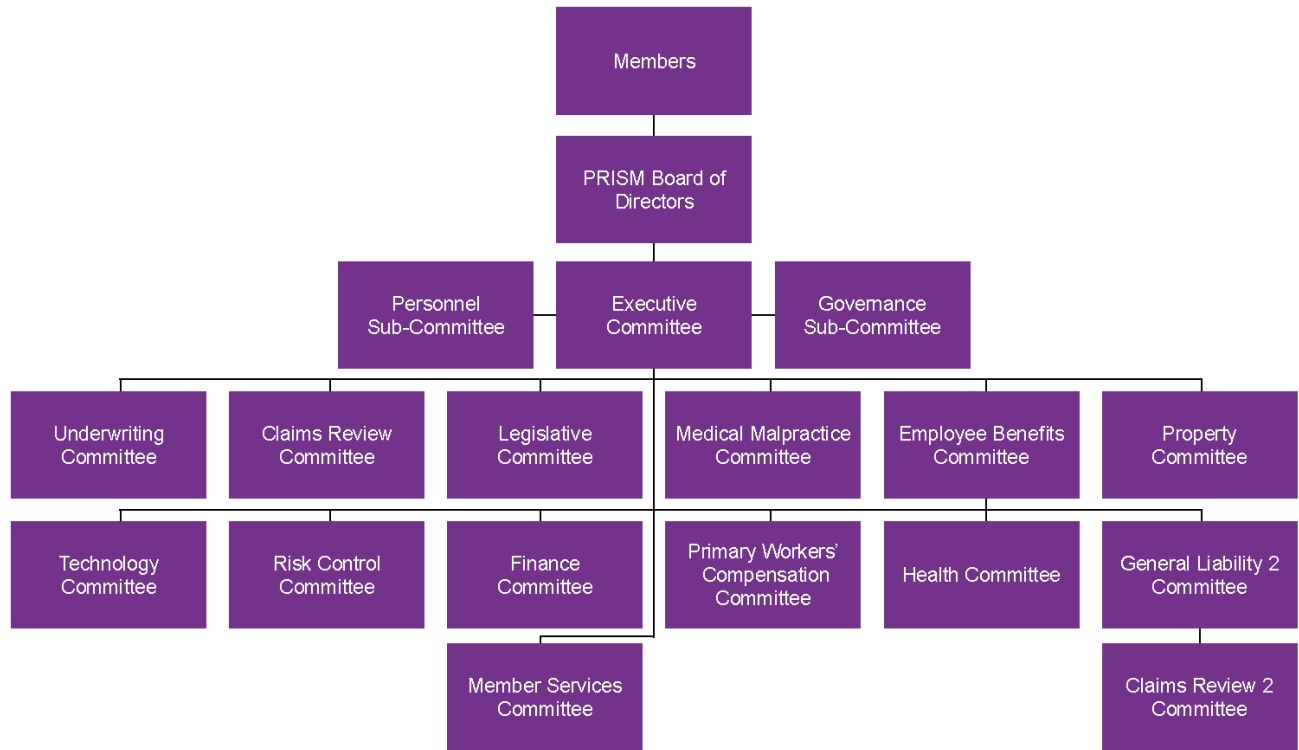


Organization Chart

The organizational chart depicts the governance structure of PRISM and the relationship between the members, the Board of Directors and the committees.



The CSAC Excess Insurance Authority (EIA) is a member-directed insurance risk sharing pool. The EIA has developed effective risk management solutions to help California public entities proactively control losses and prepare for different exposures. View our Privacy Policy.

© 2020 CSAC EIA