

**ATTACHMENT A:**

**Design plans, elevations and details approved by the  
Design Commission**

# DESIDERIO NEIGHBORHOOD PARK RESTROOM BUILDING

655 WESTMINSTER DRIVE, 91105

CONSOLIDATED DESIGN REVIEW SUBMITTAL

REVISED - APRIL 2018

## CODE SUMMARY

2016 CALIFORNIA BUILDING CODE  
 2016 MECHANICAL CODE  
 2016 PLUMBING CODE  
 2016 ELECTRICAL CODE  
 2016 FIRE CODE  
 2016 ENERGY CODE  
 2016 CAL GREEN CODE

## PROJECT DATA

ZONING: OS - OPEN SPACE  
 LEGAL DESCRIPTION: N/A  
 TOTAL SITE AREA: 709 SF  
 BUILDING FOOTPRINT: 709 SF  
 OCCUPANCY TYPE: PUBLIC USE (GROUP U)  
 CONSTRUCTION TYPE: V-8 (UNHABITED)  
 FIRE SUPPRESSOR SYSTEM: NON-SPRINKLERED  
 BUILDING AREA: 623 SF  
 MAX. BLDG. HT.: 12' 0"

## PROJECT DESCRIPTION

NEW CONSTRUCTION OF 623 SF PUBLIC PARK RESTROOM BUILDING AT DESIDERIO NEIGHBORHOOD PARK.



## SHEET INDEX

A000-R COVER SHEET  
 A001-R SITE PLAN  
 A100-R FLOOR PLAN & ROOF PLAN  
 A200-R EXTERIOR ELEVATIONS & SECTIONS  
 A300-R BUILDING DETAILS & SCHEDULES  
 A400-R BUILDING MATERIAL CUT SHEETS  
 A500-R MATERIAL BOARD  
 AX00 PARK LANDSCAPE PLANS

ONYX ARCHITECTS  
 318 Main Street, Suite 1000, Pasadena, California 91105  
 626.792.8221  
 www.onyxarchitects.com

NO. DESCRIPTION DATE

CITY OF PASADENA | PUBLIC WORKS DEPARTMENT  
 DESIDERIO NEIGHBORHOOD PARK RESTROOM BUILDING  
 655 WESTMINSTER DRIVE  
 PASADENA, CA 91105

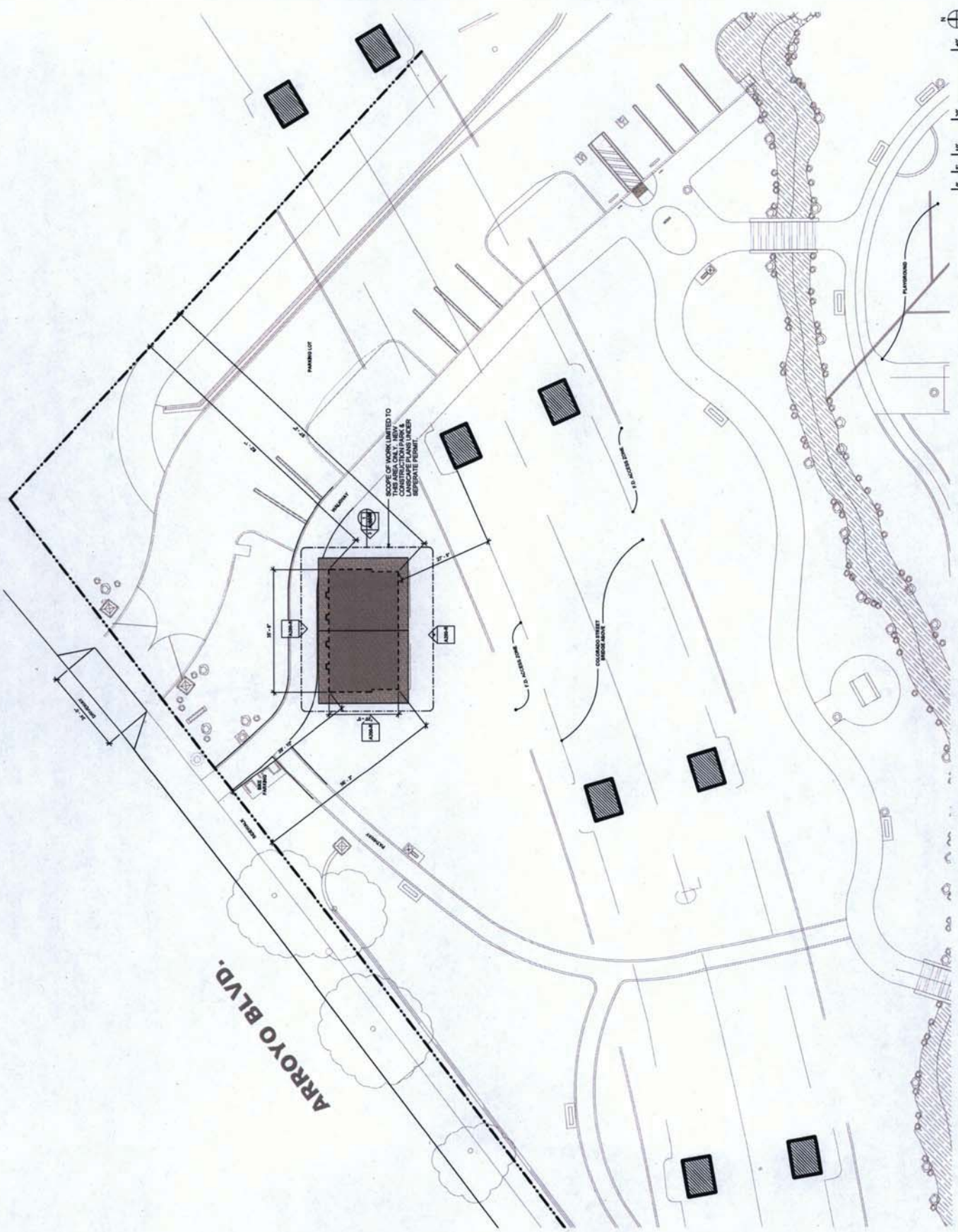
PROJECT NAME  
 CONSOLIDATED DESIGN REVIEW SUBMITTAL  
 COVER SHEET - RESUBMITTAL

A000-R

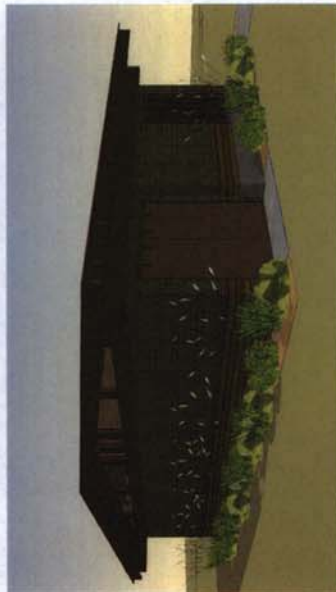
PIR01

© ONYX ARCHITECTS, INC. | PASADENA, CALIFORNIA

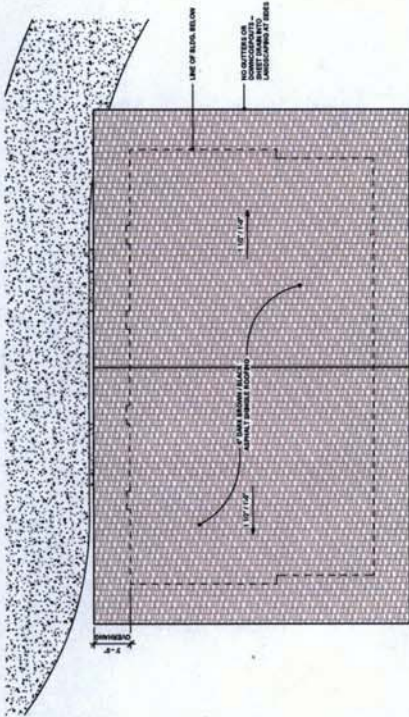
141 KENNEDY BLVD



ENLARGED SITE PLAN OPTION 5  
 1" = 10'-0"

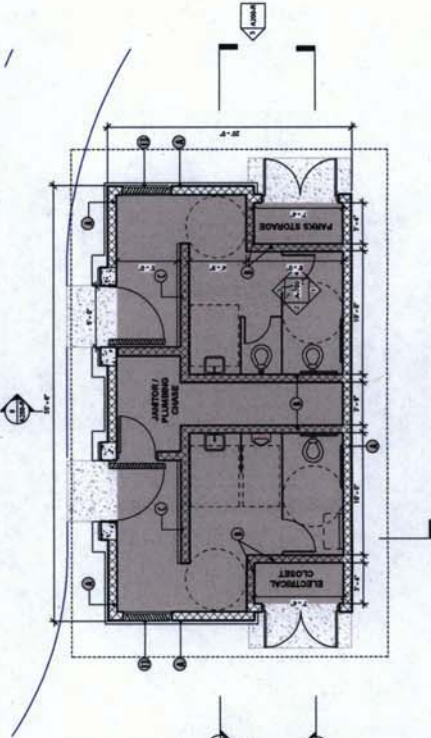


- REMARKS**
1. LINE OF LOW ROOF
  2. STAINLESS STEEL LAVATORIES WITH AUTO-SENSOR FAUCETS
  3. STAINLESS STEEL URINALS
  4. STAINLESS STEEL TOILETS
  5. STAINLESS STEEL CHANGING TABLE
  6. TOILET PARTITIONS
  7. 3" SPACING AROUND WATER CLOSET SHALL BE MAINTAINED
  8. MINIMUM 60 INCHES MADE BY 18 INCHES DEEP MANEUVERING SPACE SHALL BE PROVIDED IN FRONT OF THE WATER CLOSET.
  9. 3" MINIMUM GRAB BAR
  10. 4" MINIMUM GRAB BAR
  11. 60" X 30" CLEARANCE
  12. OPEN & POLISH / RESINAL CONCRETE FLOOR; PROVIDE SLIP RESISTANT FINISH ON WET LOCATIONS
  13. LOUNERS
  14. NEW CONCRETE SIDEWALK REFER TO DEPARTMENT OF PUBLIC WORKS STANDARD PLAN FOR CURB AND SIDEWALKS ON SHEET PAGE.
  15. ELECTRICAL HAND CENTER; REFER TO SPECIFICATION ON SHEET A01
- NOTE: ALL VERTICAL SURFACES EXPOSED TO THE PUBLIC INCLUDING TOILET PARTITIONS, GRAB BARS, AND CHANGING TABLES SHALL BE FINISHED WITH LOW-GLOSS OR MATTE, NON-REFLECTIVE, ANTI-GRAFFITI COATING. REFER TO SPECIFICATIONS FOR MORE INFO.
- FOR NOTES 1 THROUGH 15, PLEASE REFER TO THE TABLE ON SHEET A01 THROUGH A02.

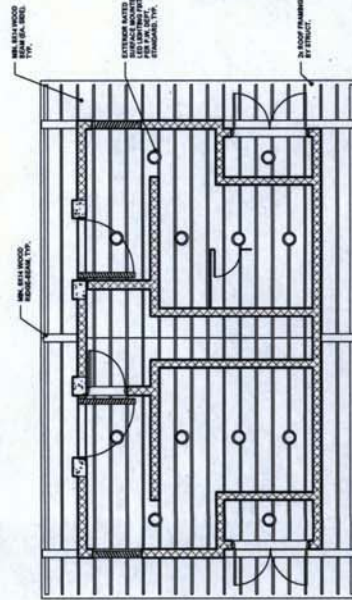


**ROOF PLAN - OPTION 6 2**  
 1/4" = 1'-0"

1	2	3	4	5	6	7
EXTERIOR FINISHES	8' CMU WITH FIBER-GLASS REINFORCING AND LAMP BROWN W/ COLORED GROUT EA.	9' CMU	10' CMU WITH FIBER-GLASS REINFORCING AND LAMP BROWN W/ COLORED GROUT EA.	11' CMU WITH FIBER-GLASS REINFORCING AND LAMP BROWN W/ COLORED GROUT EA.	12' CMU WITH FIBER-GLASS REINFORCING AND LAMP BROWN W/ COLORED GROUT EA.	CUSTOM DOUBLE-METAL SCREEN FINISH WITH BROWN OR BLACK



**FLOOR PLAN - OPTION A FINAL 1**  
 1/4" = 1'-0"



**REFLECTED CEILING PLAN - OPTION 6 3**  
 1/4" = 1'-0"

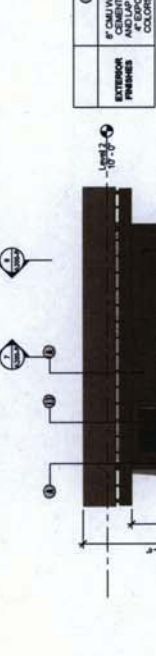
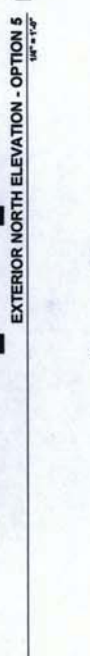
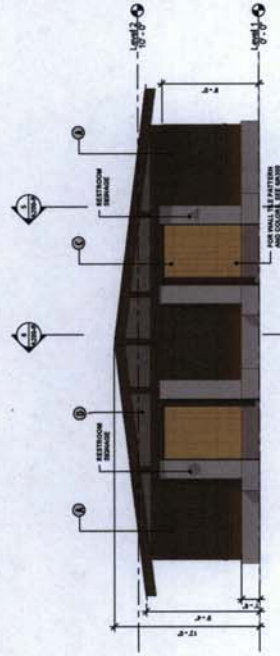
NOTE: VERIFY ALL CODES AND REGULATIONS WITH THE CITY OF PASADENA.

- KEYNOTES**
- 1 LINE OF LOW ROOF
  - 2 STAINLESS STEEL LAVATORIES WITH AUTO-SENSE FAUCETS
  - 3 STAINLESS STEEL URINALS
  - 4 STAINLESS STEEL TOILETS
  - 5 STAINLESS STEEL CHANGING TABLE
  - 6 TOILET PARTITIONS
  - 7 STAINLESS STEEL WATER CLOSET WITH 48" DEEP MIRROR
  - 8 STAINLESS STEEL WATER CLOSET SHALL BE 60" DEEP
  - 9 A MINIMUM 60 INCHES BY 48 INCHES DEEP MIRRORING SPACE SHALL BE PROVIDED IN FRONT OF THE WATER CLOSET.
  - 10 3" MINIMUM GRAB BAR
  - 11 4" MINIMUM GRAB BAR
  - 12 87" X 36" CLEARANCE
  - 13 GRID & POLISH / FINISH CONCRETE FLOOR. PROVIDE SLIP RESISTANT FINISH
  - 14 TOILET PARTITION JOINTS
  - 15 LOWERS
  - 16 STAINLESS STEEL
  - 17 STAINLESS STEEL
  - 18 STAINLESS STEEL
  - 19 STAINLESS STEEL
  - 20 STAINLESS STEEL
  - 21 STAINLESS STEEL
  - 22 STAINLESS STEEL
  - 23 STAINLESS STEEL
  - 24 STAINLESS STEEL
  - 25 STAINLESS STEEL
  - 26 STAINLESS STEEL
  - 27 STAINLESS STEEL
  - 28 STAINLESS STEEL
  - 29 STAINLESS STEEL
  - 30 STAINLESS STEEL
  - 31 STAINLESS STEEL
  - 32 STAINLESS STEEL
  - 33 STAINLESS STEEL
  - 34 STAINLESS STEEL
  - 35 STAINLESS STEEL
  - 36 STAINLESS STEEL
  - 37 STAINLESS STEEL
  - 38 STAINLESS STEEL
  - 39 STAINLESS STEEL
  - 40 STAINLESS STEEL
  - 41 STAINLESS STEEL
  - 42 STAINLESS STEEL
  - 43 STAINLESS STEEL
  - 44 STAINLESS STEEL
  - 45 STAINLESS STEEL
  - 46 STAINLESS STEEL
  - 47 STAINLESS STEEL
  - 48 STAINLESS STEEL
  - 49 STAINLESS STEEL
  - 50 STAINLESS STEEL
  - 51 STAINLESS STEEL
  - 52 STAINLESS STEEL
  - 53 STAINLESS STEEL
  - 54 STAINLESS STEEL
  - 55 STAINLESS STEEL
  - 56 STAINLESS STEEL
  - 57 STAINLESS STEEL
  - 58 STAINLESS STEEL
  - 59 STAINLESS STEEL
  - 60 STAINLESS STEEL
  - 61 STAINLESS STEEL
  - 62 STAINLESS STEEL
  - 63 STAINLESS STEEL
  - 64 STAINLESS STEEL
  - 65 STAINLESS STEEL
  - 66 STAINLESS STEEL
  - 67 STAINLESS STEEL
  - 68 STAINLESS STEEL
  - 69 STAINLESS STEEL
  - 70 STAINLESS STEEL
  - 71 STAINLESS STEEL
  - 72 STAINLESS STEEL
  - 73 STAINLESS STEEL
  - 74 STAINLESS STEEL
  - 75 STAINLESS STEEL
  - 76 STAINLESS STEEL
  - 77 STAINLESS STEEL
  - 78 STAINLESS STEEL
  - 79 STAINLESS STEEL
  - 80 STAINLESS STEEL
  - 81 STAINLESS STEEL
  - 82 STAINLESS STEEL
  - 83 STAINLESS STEEL
  - 84 STAINLESS STEEL
  - 85 STAINLESS STEEL
  - 86 STAINLESS STEEL
  - 87 STAINLESS STEEL
  - 88 STAINLESS STEEL
  - 89 STAINLESS STEEL
  - 90 STAINLESS STEEL
  - 91 STAINLESS STEEL
  - 92 STAINLESS STEEL
  - 93 STAINLESS STEEL
  - 94 STAINLESS STEEL
  - 95 STAINLESS STEEL
  - 96 STAINLESS STEEL
  - 97 STAINLESS STEEL
  - 98 STAINLESS STEEL
  - 99 STAINLESS STEEL
  - 100 STAINLESS STEEL

FOR MATERIALS THROUGHOUT THIS DRAWING REFER TO THE TABLE ON SHEET A200-R THROUGHOUT.

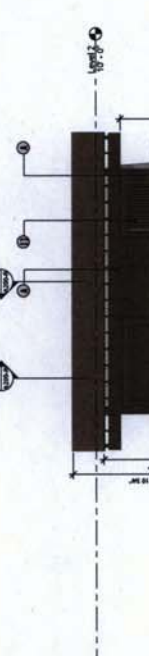
FOR MATERIALS THROUGHOUT THIS DRAWING REFER TO THE TABLE ON SHEET A200-R THROUGHOUT.

EXTERIOR FINISHES	1	2	3	4	5	6
1	2	3	4	5	6	7
8	9	10	11	12	13	14
15	16	17	18	19	20	21
22	23	24	25	26	27	28
29	30	31	32	33	34	35
36	37	38	39	40	41	42
43	44	45	46	47	48	49
50	51	52	53	54	55	56
57	58	59	60	61	62	63
64	65	66	67	68	69	70
71	72	73	74	75	76	77
78	79	80	81	82	83	84
85	86	87	88	89	90	91
92	93	94	95	96	97	98
99	100					

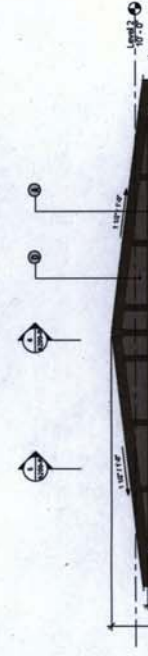


EXTERIOR NORTH ELEVATION - OPTION 5  
 1/4" = 1'-0"

EXTERIOR WEST ELEVATION - OPTION 2  
 1/4" = 1'-0"



EXTERIOR EAST ELEVATION - OPTION 3  
 1/4" = 1'-0"



EXTERIOR SOUTH ELEVATION - OPTION 4  
 1/4" = 1'-0"

**FINISH SCHEDULE**

**Interior & Exterior Finishes**

Wood: Primer / Sealer, 2-Coats Interior/Exterior Dark Brown Paint, Semi-Gloss - Final Color TBD by Architect

Metal Space Frames, Vents & Gates: Primer / Sealer, 2-Coats Interior/Exterior Dark Brown Paint, Semi-Gloss - Final Color TBD by Architect

Metal Roof Flashing: Primer / Sealer, 2-Coats Interior/Exterior Dark Brown Paint, Semi-Gloss - Final Color TBD by Architect

Hollow Metal Doors: Primer / Sealer, 2-Coats Interior/Exterior Dark Brown Paint, Semi-Gloss - Final Color TBD by Architect

Exposed Concrete & Concrete Block (CMU): Primer / Sealer, 2-Coats Exterior Non-Sacrificial Graffiti Coatings, Flat [Only in areas where accessible to public]

**Exterior Wall Finish:**  
 TYPE 1 = James Hardie, Ariflex Lap Siding & Trim, 4" Exposure, Primed for Paint / Sealer, 2-Coats Interior/Exterior "Timber Bark", Semi-Gloss.  
 TYPE 2 = James Hardie, 15.25"x48" Staggered Edge Panel, 6" Exposure, Primed for Paint / Sealer, 2-Coats Interior/Exterior "Mountain Sage", Semi-Gloss.

**Roofing:** GAF, Timberline Ultra HA Shingles, Barkwood (Dark Brown / Black)

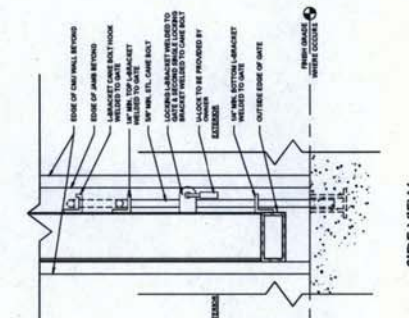
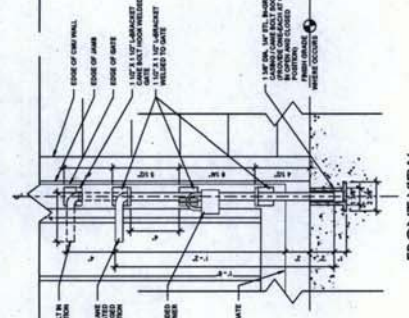
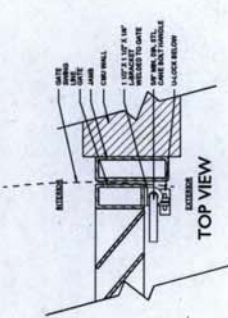
**Wall Tile:** Pasadena Craftsman Tile - Mosaic Pattern, Color: Watercolor Gold & Moss

**DOOR SCHEDULE OPTION 6**

NO.	SYMBOL	DOOR	FINISH	DETAILS
01	1-1	WOOD	WOOD	WOOD
02	1-2	WOOD	WOOD	WOOD
03	1-3	WOOD	WOOD	WOOD
04	1-4	WOOD	WOOD	WOOD
05	1-5	WOOD	WOOD	WOOD
06	1-6	WOOD	WOOD	WOOD
07	1-7	WOOD	WOOD	WOOD
08	1-8	WOOD	WOOD	WOOD
09	1-9	WOOD	WOOD	WOOD
10	1-10	WOOD	WOOD	WOOD
11	1-11	WOOD	WOOD	WOOD
12	1-12	WOOD	WOOD	WOOD
13	1-13	WOOD	WOOD	WOOD
14	1-14	WOOD	WOOD	WOOD
15	1-15	WOOD	WOOD	WOOD
16	1-16	WOOD	WOOD	WOOD
17	1-17	WOOD	WOOD	WOOD
18	1-18	WOOD	WOOD	WOOD
19	1-19	WOOD	WOOD	WOOD
20	1-20	WOOD	WOOD	WOOD

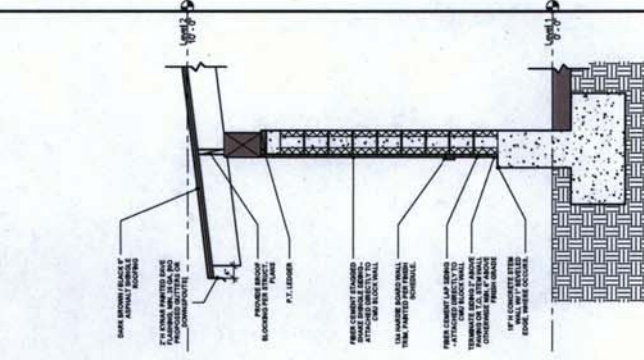
**WINDOW SCHEDULE OPTION 6**

NO.	SYMBOL	WINDOW	FINISH	DETAILS
01	2-1	WOOD	WOOD	WOOD
02	2-2	WOOD	WOOD	WOOD
03	2-3	WOOD	WOOD	WOOD
04	2-4	WOOD	WOOD	WOOD
05	2-5	WOOD	WOOD	WOOD
06	2-6	WOOD	WOOD	WOOD
07	2-7	WOOD	WOOD	WOOD
08	2-8	WOOD	WOOD	WOOD
09	2-9	WOOD	WOOD	WOOD
10	2-10	WOOD	WOOD	WOOD
11	2-11	WOOD	WOOD	WOOD
12	2-12	WOOD	WOOD	WOOD
13	2-13	WOOD	WOOD	WOOD
14	2-14	WOOD	WOOD	WOOD
15	2-15	WOOD	WOOD	WOOD
16	2-16	WOOD	WOOD	WOOD
17	2-17	WOOD	WOOD	WOOD
18	2-18	WOOD	WOOD	WOOD
19	2-19	WOOD	WOOD	WOOD
20	2-20	WOOD	WOOD	WOOD

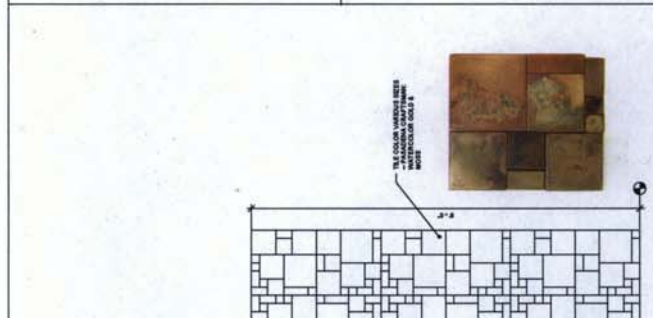


TOP VIEW  
FRONT VIEW  
SIDE VIEW

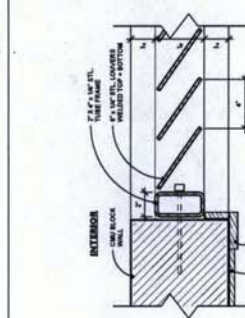
ENTRY GATE DETAILS 5  
3'-0" x 1'-0"



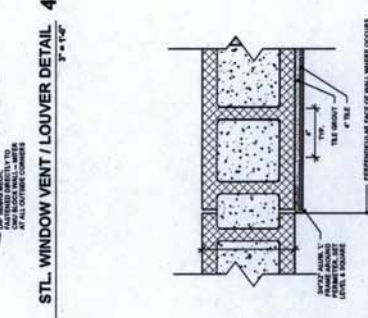
TYP. WALL SECTION 2  
3'-0" x 1'-0"



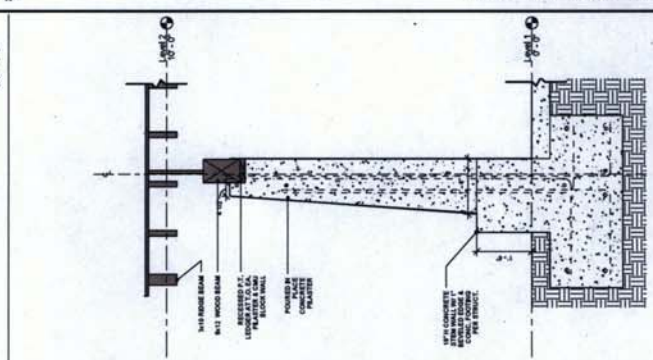
WALL TILE PATTERN OPTION 6  
1'-0" x 1'-0"



STL. WINDOW VENT / LOUVER DETAIL 4  
3'-0" x 1'-0"



WALL TO TILE TRANSITION 3  
3'-0" x 1'-0"



PILASTER WALL SECTION 1  
3'-0" x 1'-0"

**artisan** *FIBRE* lap siding  
INSTALLATION REQUIREMENTS

**INSTALLATION REQUIREMENTS:** These requirements apply to the installation of ARTISAN lap siding on exterior walls. The installer must follow the manufacturer's instructions for the proper installation of the siding. The installer must also follow the applicable building codes and standards for the installation of exterior wall coverings. The installer must also follow the applicable safety and health regulations for the installation of exterior wall coverings. The installer must also follow the applicable environmental regulations for the installation of exterior wall coverings.



**PREPARATION:** The wall surface must be clean, smooth, and free of any loose material. The wall surface must be prepared in accordance with the applicable building codes and standards. The wall surface must be prepared in accordance with the applicable safety and health regulations. The wall surface must be prepared in accordance with the applicable environmental regulations.

**INSTALLATION:** The siding should be installed in a vertical or horizontal pattern, depending on the design. The siding should be installed in a staggered pattern. The siding should be installed in a pattern that allows for proper water drainage. The siding should be installed in a pattern that allows for proper ventilation.

**FINISHING:** The siding should be finished in accordance with the manufacturer's instructions. The siding should be finished in a way that provides a smooth and uniform appearance. The siding should be finished in a way that provides a long and durable life.

**MAINTENANCE:** The siding should be maintained in accordance with the manufacturer's instructions. The siding should be maintained in a way that prevents the accumulation of dirt and debris. The siding should be maintained in a way that prevents the growth of mold and mildew.

**WARRANTY:** The manufacturer warrants that the siding will be free of defects in material and workmanship for a period of 10 years. The manufacturer warrants that the siding will be free of defects in material and workmanship for a period of 10 years.



**FIBER CEMENT SIDING**

©2015 ONYX ARCHITECTS, INC. | PASADENA, CALIFORNIA

**PRODUCT INFORMATION**

**PRODUCT INFORMATION:** This information provides details about the product, including its features, benefits, and applications. The information is intended to help the user understand the product and its capabilities. The information is also intended to help the user make the most of the product.

**APPLICATIONS:** This product is suitable for use in a variety of applications, including residential and commercial buildings. The product is also suitable for use in outdoor environments. The product is also suitable for use in areas with high humidity and moisture.

**COMPARISON:** This product is compared to other products in the market. The comparison shows that this product has several advantages over other products. These advantages include its durability, its resistance to moisture and mold, and its ease of installation.

**STANDARDS:** This product meets all applicable standards and regulations. The product is also tested and certified by independent organizations. The product is also tested and certified by independent organizations.

**INSTALLATION:** This product is installed in accordance with the manufacturer's instructions. The product is installed in a way that ensures its long-term performance. The product is installed in a way that ensures its long-term performance.

**MAINTENANCE:** This product is maintained in accordance with the manufacturer's instructions. The product is maintained in a way that prevents the accumulation of dirt and debris. The product is maintained in a way that prevents the growth of mold and mildew.

**WARRANTY:** The manufacturer warrants that the product will be free of defects in material and workmanship for a period of 10 years. The manufacturer warrants that the product will be free of defects in material and workmanship for a period of 10 years.

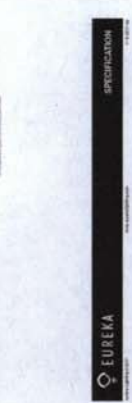


**WALL TILE**

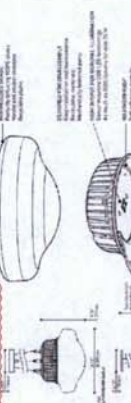
©2015 ONYX ARCHITECTS, INC. | PASADENA, CALIFORNIA

ITEM	DESCRIPTION	QTY	UNIT
1	...	...	...
2	...	...	...
3	...	...	...
4	...	...	...
5	...	...	...
6	...	...	...
7	...	...	...
8	...	...	...
9	...	...	...
10	...	...	...

**DESCRIPTION:** This section provides a detailed description of the items listed in the table above. The descriptions include the name of the item, its quantity, and its unit of measurement. The descriptions also include any relevant specifications or notes.



**CHARACTERISTICS:** This section lists the key characteristics of the lighting fixture, such as its light output, beam spread, and adjustability. The characteristics are listed in a clear and concise manner.

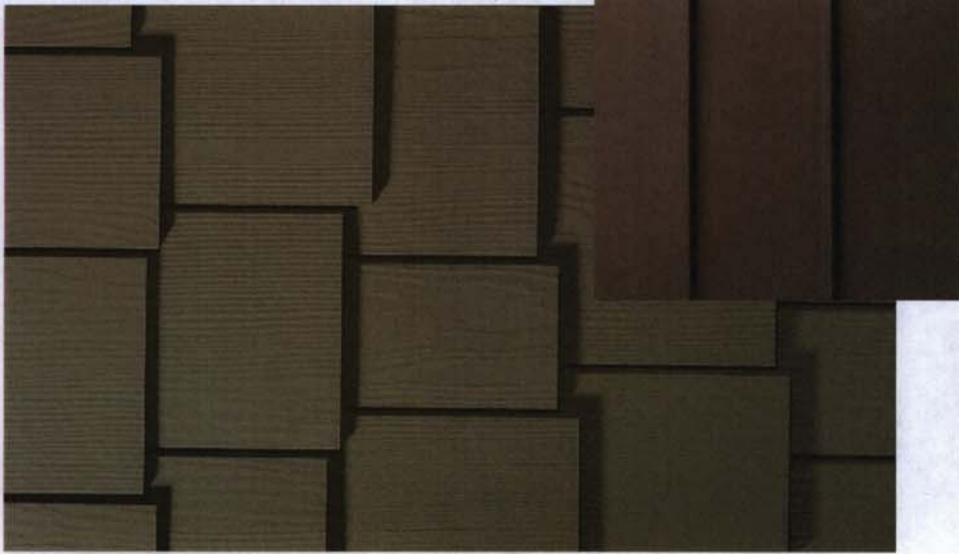


**INSTALLATION:** This section provides step-by-step instructions for the installation of the lighting fixture. The instructions are easy to follow and ensure that the fixture is installed correctly and safely.

**WARRANTY:** The manufacturer warrants that the lighting fixture will be free of defects in material and workmanship for a period of 5 years. The manufacturer warrants that the lighting fixture will be free of defects in material and workmanship for a period of 5 years.

**LIGHTING**

©2015 ONYX ARCHITECTS, INC. | PASADENA, CALIFORNIA



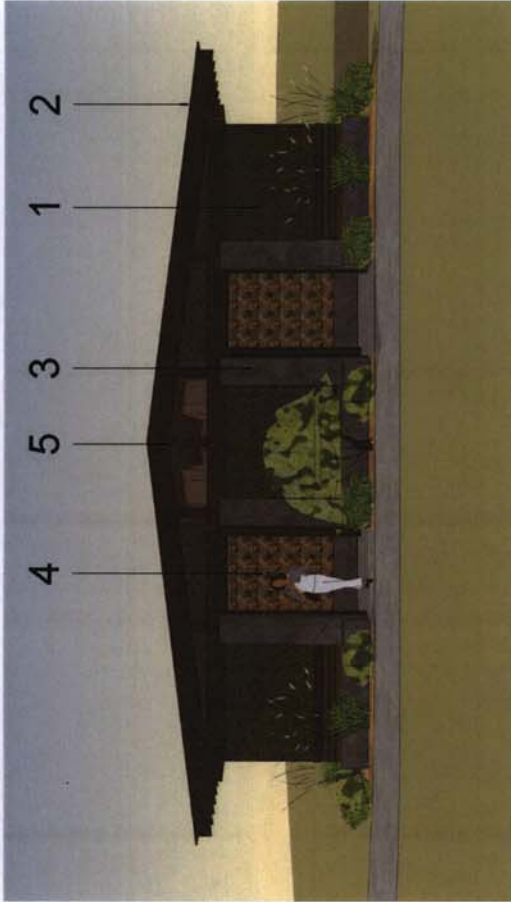
1



2

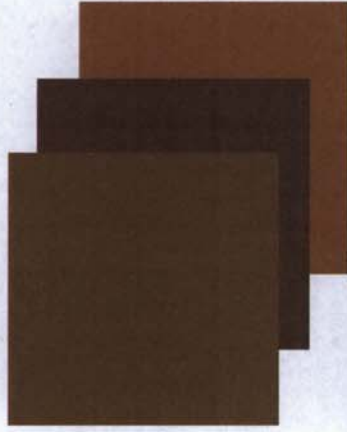


3



**COLOR SCHEME**

- A. DE8210 MIDNIGHT BROWN
- B. DE8119 NEUTRAL VALLEY
- C. DE8119 NEUTRAL VALLEY



5

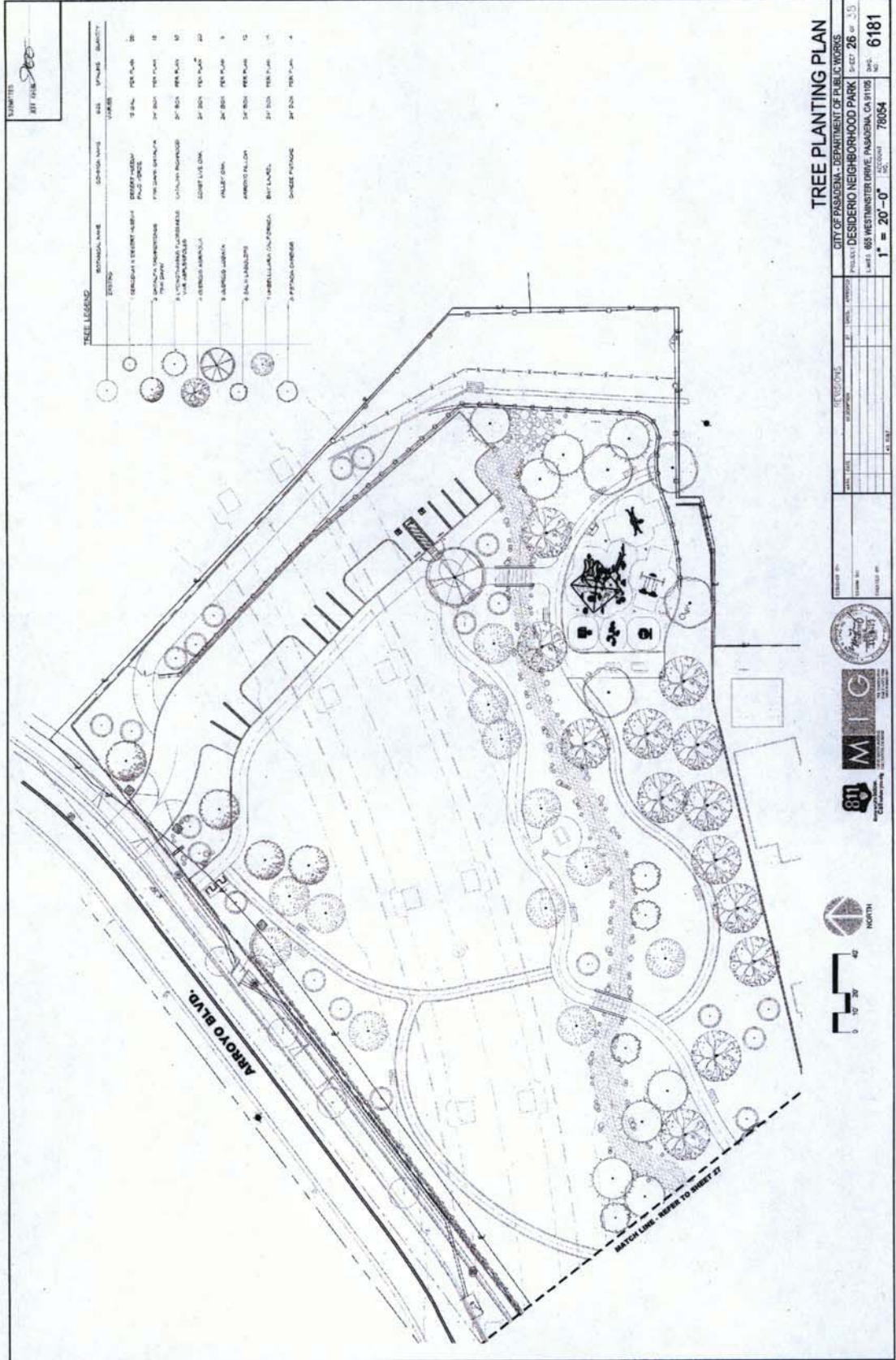


4

**MATERIAL LIST**

1. JAMES HARDIE - 6" STAGGERED SHINGLE & 4" ARTISIAN LAP SIDING SERIES, PAINTED (SEE COLOR SCHEME 1 & 2)
2. GAF ROOFING - HD TIMBERLINE, "BARKWOOD"
3. POURED IN PLACE CONCRETE W/ ANTI-GRAFFITI COATING
4. PASADENA CRAFTSMAN TILE (VARIOUS SIZES), COLOR: WATERCOLOR GOLD & MOSS
5. PAINTED SIDING, ROOF FRAMING & MATCHING KYNAR PAINTED DOORS, LOUVERS, GATES, ETC. (SEE COLOR SCHEME)



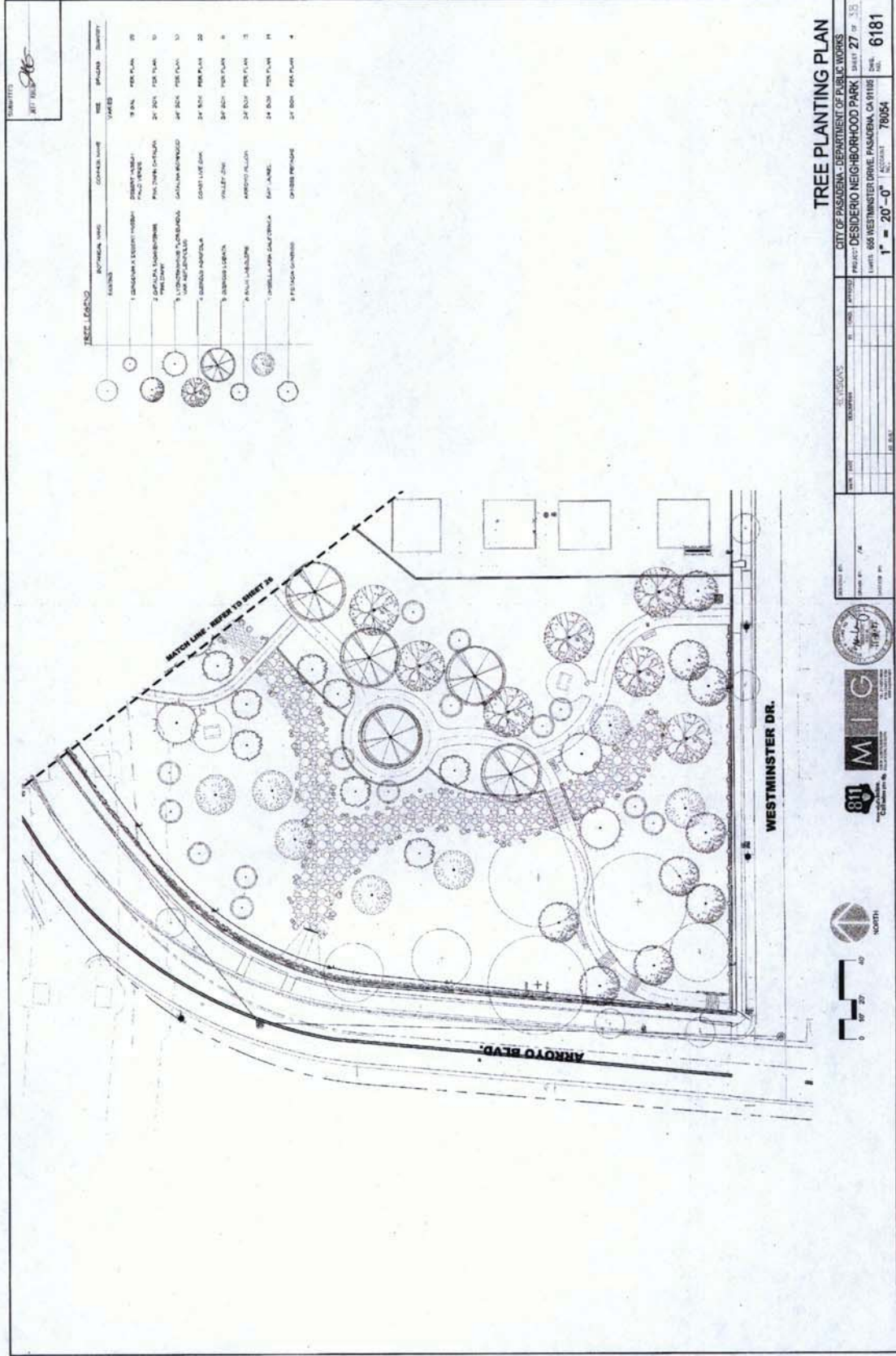


**TREE PLANTING PLAN**

CITY OF PASADENA, DEPARTMENT OF PUBLIC WORKS  
 DESIDERIO NEIGHBORHOOD PARK  
 855 WESTMINSTER DRIVE, PASADENA, CA 91105  
 SHEET 26 OF 35  
 DATE: 7/20/2021  
 ACCOUNT: 78054  
 1" = 20'-0"

NO.	DESCRIPTION	DATE

NO.	DESCRIPTION	DATE













100 ARROYO DR.



218 ARROYO DR. (PROJECT SITE)



218 ARROYO BLVD. (PROJECT SITE)



218 ARROYO BLVD.



128 S. ARROYO BLVD.



108 WESTMINSTER DR.



67 WESTMINSTER DR.



663 WESTMINSTER DR.