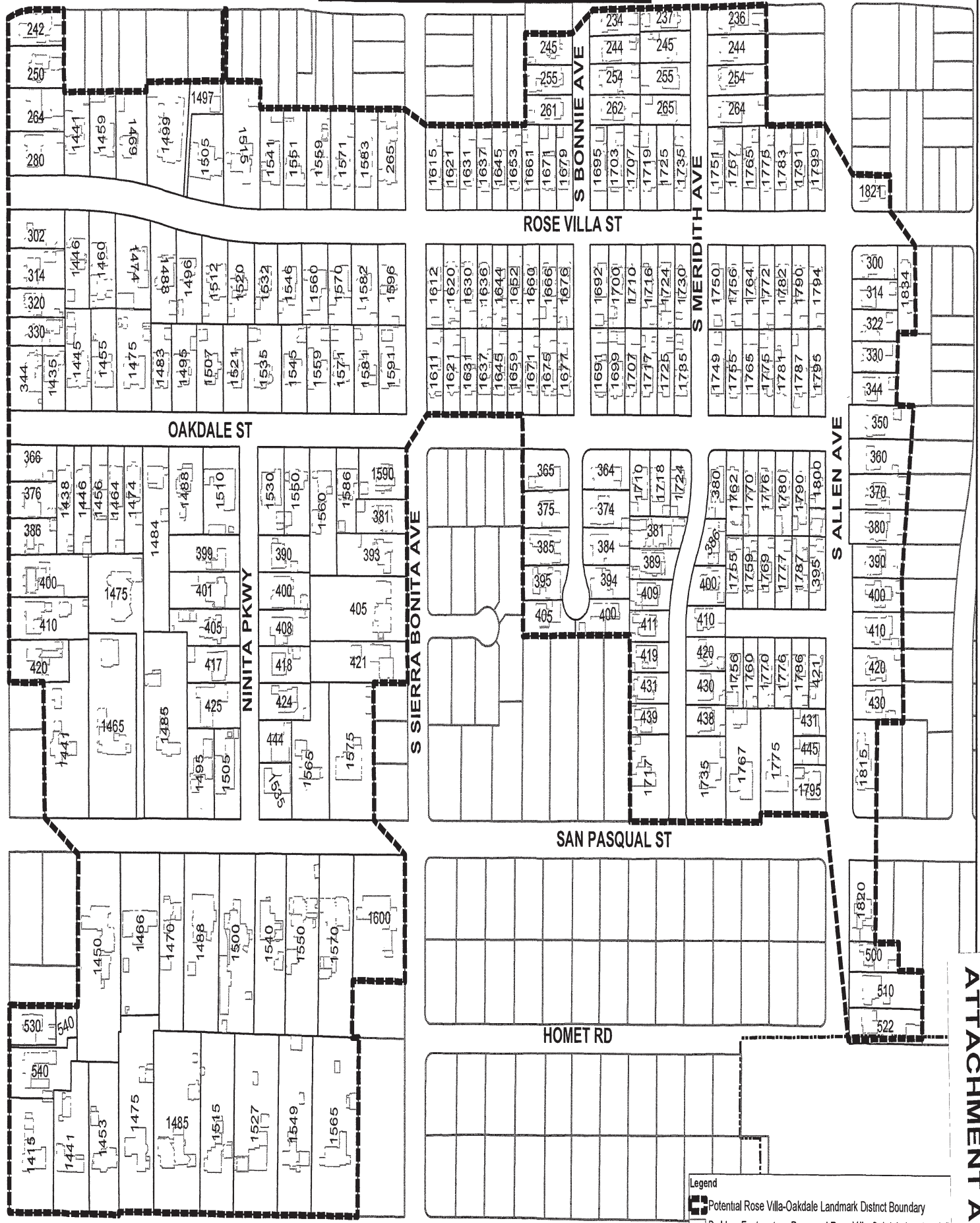


E DEL MAR BLVD

Potential Rose Villa-Oakdale Landmark District



Legend

- Potential Rose Villa-Oakdale Landmark District Boundary
- Building Footprints in Proposed Rose Villa-Oakdale Landmark D.
- Property Lines
- City Boundary

ATTACHMENT A





Example Contributing Buildings: Craftsman Bungalows (20 Properties)

Planning & Community Development Department



PASADENA



Example Contributing Buildings: Two-Story Arts & Crafts Period Houses (11 Properties)

Planning & Community Development Department





Example Contributing Buildings: Colonial Revival Style (18 Properties)

Planning & Community Development Department



PASADENA



Example Contributing Buildings: Colonial Revival Bungalows (20 Properties)

Planning & Community Development Department

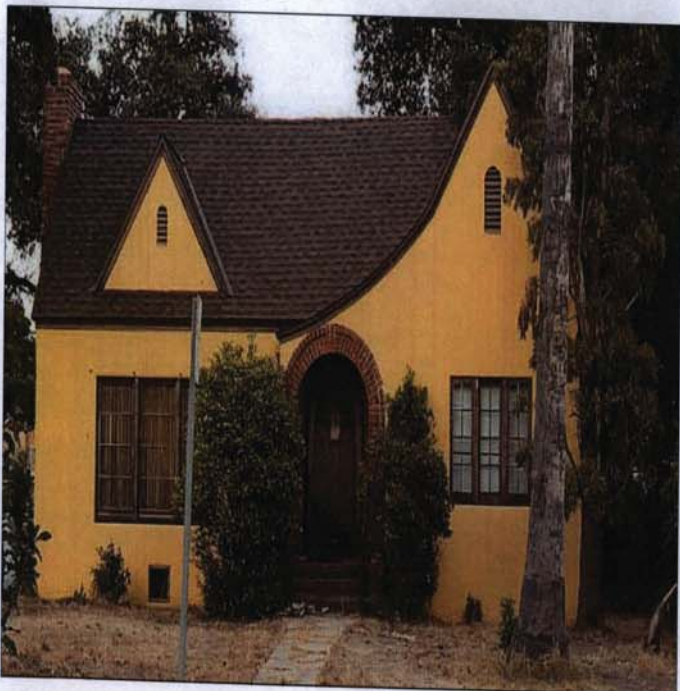


PASADENA



Example Contributing Buildings: English Cottage Revival Style (31 Properties)

Planning & Community Development Department





Example Contributing Buildings: French Eclectic Style (5 Properties)

Planning & Community Development Department

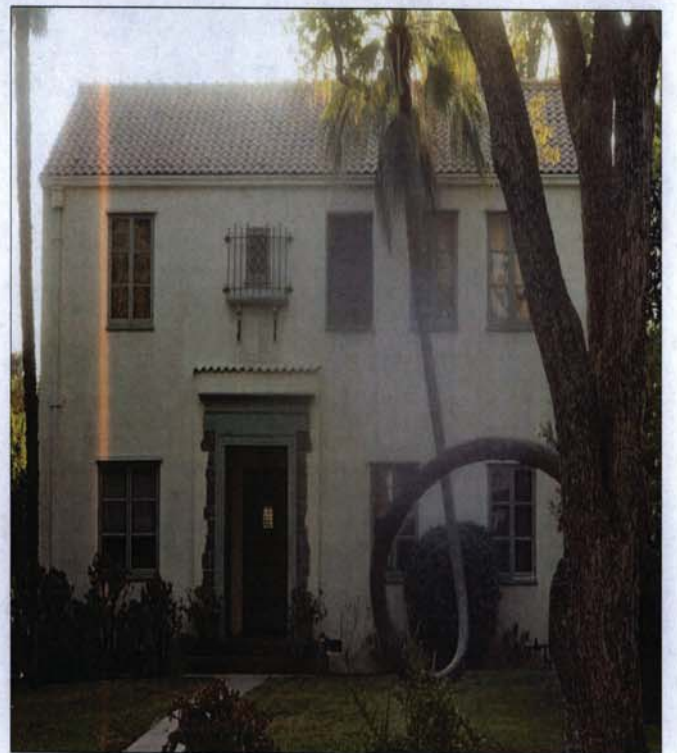


PASADENA



Example Contributing Buildings: Italian Renaissance Revival Style (17 Properties)

Planning & Community Development Department





Example Contributing Buildings: Spanish Colonial Revival Style (66 Properties)

Planning & Community Development Department





Example Contributing Buildings: Tudor Revival Style (22 Properties)

Planning & Community Development Department





Example Non-contributing Buildings: Altered (23 Properties)

Planning & Community Development Department

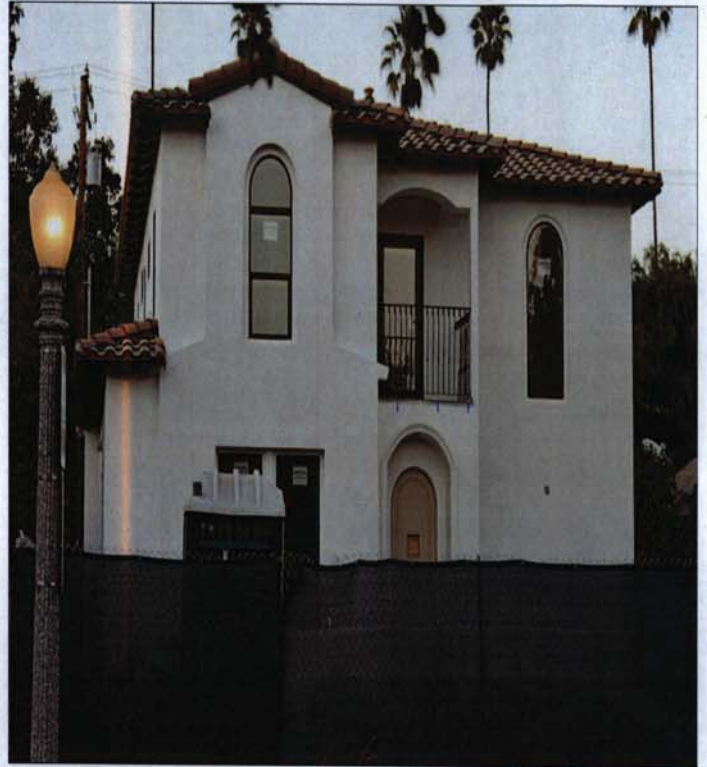


PASADENA



Example Non-contributing Buildings: Newer Houses (13 Properties)

Planning & Community Development Department



ATTACHMENT C: INVENTORY OF PROPERTIES

FULL ADDRESS	APN	YEAR BUILT	ARCHITECT	BUILDER	CIN	POSSIBLE ALTERATIONS	ORIGINAL OWNER	STYLE	NOTES	NRHP STATUS CODE
300 S ALLEN AVE	5330-022-001	1925			C			Spanish Colonial Revival		502
314 S ALLEN AVE	5330-022-002	1924			NC	Windows, door, roof		English Cottage Revival		6Z
322 S ALLEN AVE	5330-022-003	1925			C			Tudor		502
330 S ALLEN AVE	5330-022-004	1925		Crown City Construction	C		John A. Williams		Street view obscured by landscaping	502
344 S ALLEN AVE	5330-022-005	1951		R L Grest	NC		Mrs M C & Miss Millsaugh	Modern Ranch	Built outside period of significance	6Z
350 S ALLEN AVE	5330-022-014	1994			C			English Cottage Revival		502
360 S ALLEN AVE	5330-022-015	1929			C		Mrs & Miss Millsaugh	Tudor		502
370 S ALLEN AVE	5330-022-016	1925	Earl Gamble	R O Meeks	C	Compatible addition		Spanish Colonial Revival		502
375 S ALLEN AVE	5736-029-007	1923			NC	Windows, front door, porch, incompatible addition		Spanish Colonial Revival		6Z
380 S ALLEN AVE	5330-022-017	1927			C		Don Parker	Spanish Colonial Revival		502
390 S ALLEN AVE	5330-022-018	1928			C		Earl Gamble	Tudor		502
395 S ALLEN AVE	5736-029-001	1933			C	Compatible addition	D S Walter	English Cottage Revival		502
400 S ALLEN AVE	5330-022-024	1925			C		Mrs J B Lambert	English Cottage Revival		502
410 S ALLEN AVE	5330-022-025	1938			C		Paul Bohm	Minimal Traditional		502
420 S ALLEN AVE	5330-022-026	1925			C		Mrs J B Lambert	Tudor		502
421 S ALLEN AVE	5736-030-006	1924			C		J E Earentight	English Cottage Revival		502
430 S ALLEN AVE	5330-022-027	1925		Walter E Wilcox	C		Walter E Wilcox	Spanish Colonial Revival		502
431 S ALLEN AVE	5736-030-003	1925		J H Shelton	C		Ruth Caspers	English Cottage Revival		502
445 S ALLEN AVE	5736-030-002	1925			C			Tudor		502
500 S ALLEN AVE	5329-007-021	1926			C		Frances Knoll	Tudor		502
510 S ALLEN AVE	5329-007-023	1925		O M Scott	C	Roof	Dr Ed Knoll	Colonial Revival		502
522 S ALLEN AVE	5329-007-034	1925			C			Colonial Revival		502
234 S BONNIE AVE	5736-022-010	1930	J W M Buckles	J W M Buckles	C		J W M Buckles	English Cottage Revival		502
244 S BONNIE AVE	5736-022-009	1921			C	Windows	Floyd H Emery	Colonial Revival Bungalow		502
245 S BONNIE AVE	5736-016-018	1921			C		E G Clough	Spanish Colonial Revival		502
254 S BONNIE AVE	5736-022-008	1913			C		Charles Cox	Craftsman Bungalow		502
255 S BONNIE AVE	5736-016-019	1913	Tony E Anderson	Tony E Anderson	C		William Kim	Craftsman Bungalow		502
261 S BONNIE AVE	5736-016-020	1914	Tony E Anderson	Tony E Anderson	C		Maree K Anderson	Craftsman Bungalow	Much of street view obscured by landscaping	502
262 S BONNIE AVE	5736-022-007	1921			NC	Windows, exterior cladding, doors, porch, incompatible additions	E P Zube			6Z
364 S BONNIE AVE	5736-020-016	1939			C		Thomas Knudson	Minimal Traditional		502
365 S BONNIE AVE	5736-018-010	1936			C	Roof	Carrie E Goodrich	English Cottage Revival		502
374 S BONNIE AVE	5736-020-015	1938		Frank Schweibns	C		Mr & Mrs Joseph Tierdy	Minimal Traditional		502
375 S BONNIE AVE	5736-018-011	1938			NC			California Ranch	Built outside period of significance	6Z
384 S BONNIE AVE	5736-020-014	1941		J Pierre & Son	C	Windows	C S Coony	Minimal Traditional		502
385 S BONNIE AVE	5736-018-012	1936	Erle Webster & Adrian Webster	RA Tolsley	C		Anna R Gilbert	Minimal Traditional		502
394 S BONNIE AVE	5736-020-013	1936		E A Daniell	NC	Windows, incompatible addition	W W Wesscott	Minimal Traditional	Second story addition 2005	6Z
395 S BONNIE AVE	5736-018-013	1936	Erle Webster & Adrian Webster	RA Tolsley	C		Godfrey Davis	Minimal Traditional		502
400 S BONNIE AVE	5736-020-012	1937		M W deLoubenfels	NC	Windows, front door, original porte cochere missing	M W deLoubenfels			6Z
405 S BONNIE AVE	5736-018-014	1939	Webster & Wilson	J K Bennett	C		J A Campbell	Minimal Traditional		502
1415 E CALIFORNIA BLVD	5327-005-008	1927	Trevor Franklin	Trevor Franklin	C		Willard I Stone	Spanish Colonial Revival		3D, 502
1441 E CALIFORNIA BLVD	5327-005-009	1935	Wallace Neff	H F Kashner	C		Lewis Starkey	Italian Renaissance Revival		3D, 502
1453 E CALIFORNIA BLVD	5327-005-010	1923	Wallace Neff	A Carpenter & Son	C		L M H Walker	Spanish Colonial Revival		3D, 502
1475 E CALIFORNIA BLVD	5327-006-017	1926	Wallace Neff	C C Johnson & Son	C		Cr & Mrs W J Stone	Spanish Colonial Revival		3D, 502
1485 E CALIFORNIA BLVD	5327-006-011	1926	R C Flewelling	W N Caldwell	C		Ernest G Brookman	Spanish Colonial Revival		3D, 502
1515 E CALIFORNIA BLVD	5327-006-012	1922			C		Robert Crane	Colonial Revival		3D, 502
1527 E CALIFORNIA BLVD	5327-006-013	1923	Johnson, Kaufmann & Coate	Daniel Whelstone	C		F J Hill		Street view obscured by landscaping	3D, 502
1549 E CALIFORNIA BLVD	5327-006-014	1923	Wallace Neff	Kemp & Haskett	C		Byron Swearingan	Spanish Colonial Revival		3D, 502
1565 E CALIFORNIA BLVD	5327-006-015	1926	Marston, Van Pelt & Maybury	W B Haskett	C		Gordon Hatch	Tudor		3D, 502
242 S HILL AVE	5736-010-001	1922			C		Mr G A Vincente	Spanish Colonial Revival		3D, 502
250 S HILL AVE	5736-010-002	1919			C		Miss Bessie Wilson	Spanish Colonial Revival		3D, 502
264 S HILL AVE	5736-010-019	1929			C			Spanish Colonial Revival		3D, 502
280 S HILL AVE	5736-010-005	1921			C	Compatible addition	JH & HM Stewart	Cape Cod		3D, 502
302 S HILL AVE	5736-009-001	1924	Joseph Kusera	McClure & Spenot	C		Mrs E Perkins	Tudor	Much of street view obscured by landscaping	3D, 502
314 S HILL AVE	5736-009-002	1915	Henry L Wilson	J E Coombs	C	Windows	J E Coombs	Craftsman (Arts and Crafts)		3D, 502
320 S HILL AVE	5736-009-003	1925	George E Cavell	FD Marshall	C		FD Marshall	Tudor		3D, 502
330 S HILL AVE	5736-009-004	1926	George E Cavell	FD Marshall	C		FD Marshall	Tudor		3D, 502
344 S HILL AVE	5736-009-005	1926	George Brigham	E R Garwood	C			Tudor		3D, 502
366 S HILL AVE	5736-005-007	1922			C	Windows	Edwin D Allabough	English Cottage Revival		3D, 502
376 S HILL AVE	5736-005-008	1922			C		Edwin D Allabough, Miss E R Simpson (both listed)	Colonial Revival Bungalow		3D, 502
386 S HILL AVE	5736-005-009	1922			C		Edwin D Allabough	Italian Renaissance Revival		3D, 502
400 S HILL AVE	5736-005-010	1924		William Moore	C		J M Johnson	Italian Renaissance Revival		3D, 502
410 S HILL AVE	5736-005-011	1924		R L Humphrey	C		Godfrey Rueger	Italian Renaissance Revival		3D, 502
420 S HILL AVE	5736-005-012	1926	Everett Phipps Babcock	J J Ponninall	C		Mrs Atte C Finnell	Spanish Colonial Revival		3D, 502
530 S HILL AVE	5327-005-005	1927	H H Carpenter	H H Carpenter	C		H H Carpenter	Spanish Colonial Revival		3D, 502
540 S HILL AVE	5327-005-007	1928	H H Carpenter	H H Carpenter	C		H H Carpenter	Spanish Colonial Revival	Under construction	3D, 502
540 S HILL AVE	5327-005-006				NC				Vacant flag lot	6Z
236 S MERIDITH AVE	5736-027-018	1938			C		Mr & Mrs Pierson	Minimal Traditional		502
237 S MERIDITH AVE	5736-022-011	2002			NC				Built outside period of significance	6Z
244 S MERIDITH AVE	5736-027-010	1920			C		Wm S Frink	Colonial Revival Bungalow		502
245 S MERIDITH AVE	5736-022-012	1921			C		P M Roth	Spanish Colonial Revival		502
254 S MERIDITH AVE	5736-027-009	1910		Hiram D Huffman	C		Hiram D Huffman	Craftsman Bungalow		502
255 S MERIDITH AVE	5736-022-013	1913		Alfred W Hookway	C		Chester R Pyle	Craftsman Bungalow		502
264 S MERIDITH AVE	5736-027-008	1912		Hiram D Huffman	C		Hiram D Huffman	Craftsman Bungalow		502
265 S MERIDITH AVE	5736-022-014	1922	W W Scates	W W Scates	C		W W Scates	Spanish Colonial Revival		502
380 S MERIDITH AVE	5736-029-017	1925	James Henry	James Henry & Son	C		Catherine & Grace Gifford	Tudor		502
381 S MERIDITH AVE	5736-020-004	1925		J S Cline	C		J S Cline	Spanish Colonial Revival	Much of street view obscured by landscaping	502

ATTACHMENT C: INVENTORY OF PROPERTIES

FULL ADDRESS	APN	YEAR BUILT	ARCHITECT	BUILDER	C/N	POSSIBLE ALTERATIONS	ORIGINAL OWNER	STYLE	NOTES	NRHP STATUS CODE
386 S MERIDITH AVE	5736-029-016	1925		Crown City Construction	C		John A. Williams	Spanish Colonial Revival		5D2
389 S MERIDITH AVE	5736-020-005	1925		J.S. Cline	NC	Windows, trim, front door	Cornelia Kintzge	Spanish Colonial Revival		6Z
400 S MERIDITH AVE	5736-029-015	1928			C		J.S. Cline	Spanish Colonial Revival		5D2
409 S MERIDITH AVE	5736-020-006	1925	Glenn Elwood Smith	Charles Catt	C	Windows	Edwin R. Sneyd	English Cottage Revival		5D2
410 S MERIDITH AVE	5736-029-014	1926		J.S. Cline	NC	Windows, cladding, roof	J.S. Cline			6Z
411 S MERIDITH AVE	5736-020-007	1932		Parker & Gamble, Ltd	C		Mrs. A.J. Wetherell	English Cottage Revival		5D2
419 S MERIDITH AVE	5736-020-008	1928		Hestand & Riehl	C		A.J. Brier	English Cottage Revival	Much of street view obscured by landscaping	5D2
420 S MERIDITH AVE	5736-030-015	1928	Burton A. Schutt	H.D. Schutt Co	C		H.W. Brnsley	Tudor		5D2
430 S MERIDITH AVE	5736-030-014	1927	E.T. Sommerstad	E.T. Sommerstad	C		E.T. Sommerstad	Spanish Colonial Revival		5D2
431 S MERIDITH AVE	5736-020-009	1926		P.A. Reid	C		P.A. Reid	Tudor		5D2
438 S MERIDITH AVE	5736-030-013	1926	Anna Latham	Anna Latham	C		Anna Latham	Italian Renaissance Revival		5D2
439 S MERIDITH AVE	5736-020-010	1927		Charles Christianson	C		W.S. Sweth	Spanish Colonial Revival		5D2
390 NINITA PKWY	5736-007-016	1924	William P. Neil	William P. Neil	C		William P. Neil	Colonial Revival		3D, 5D2
399 NINITA PKWY	5736-006-008	1925	William P. Neil	William P. Neil	C		William P. Neil	Italian Renaissance Revival		3D, 5D2
400 NINITA PKWY	5736-007-017	1925	Wallace Neff	W.B. Haskett	C		A.R. Benedict	Tudor		3D, 5D2
401 NINITA PKWY	5736-006-007	1923		not legible	C		Mrs. E.W. Vosburg	English Cottage Revival		3D, 5D2
405 NINITA PKWY	5736-006-006	1924	Harry Haggen	Kent J. Mollert	C		WM. Gneger	Spanish Colonial Revival		3D, 5D2
408 NINITA PKWY	5736-007-018	1935			C	Windows, Compatible addition	Dora M. Burch	Vernacular Hipped Cottage		3D, 5D2
417 NINITA PKWY	5736-006-005	1933		H.F. Latler	C		H.F. Latler	Monterey Revival		3D, 5D2
418 NINITA PKWY	5736-007-019	1925	George Smith	Goodwin	C		Mr. & Mrs. C.H. Kelley	Colonial Revival		3D, 5D2
424 NINITA PKWY	5736-007-020	1926	Clarence L. Jay	William P. Neil	C		William P. Neil	Spanish Colonial Revival		3D, 5D2
425 NINITA PKWY	5736-006-004	1955	Bob R. Offenhauser	O. Offenhauser	NC		Otto Offenhauser	Modern Ranch	Built outside period of significance	6Z
444 NINITA PKWY	5736-007-021	1951	Renee Jacobsther	Mr & Mrs A.R. Benedict	NC		Mr & Mrs A.R. Benedict	Modern Ranch	Built outside period of significance	6Z
1435 OAKDALE ST	5736-009-005	1926	Foss Designing & Building Comp	Foss Designing & Building Comp	C		Mr & Mrs Gilbert Campbell	Colonial Revival Bungalow		3D, 5D2
1438 OAKDALE ST	5736-005-006	1922			C		W. Allabough		Much of street view obscured by landscaping	3D, 5D2
1445 OAKDALE ST	5736-009-007	1923		Mrs M. L. Wolcott	C		Mrs M. L. Wolcott	Spanish Colonial Revival		3D, 5D2
1446 OAKDALE ST	5736-005-005	1922		Dunlap	C	Porch enclosure at front	Dunlap J. Noyle	English Cottage Revival		3D, 5D2
1455 OAKDALE ST	5736-009-008	1922		Webster Co	C		Warren Allabough	Colonial Revival		3D, 5D2
1456 OAKDALE ST	5736-005-004	1988			NC				Built outside period of significance	6Z
1464 OAKDALE ST	5736-005-003	1923	Charles Edward Ruhe	Kemp & Haskett	C	Compatible addition (dormers)	Prof. Abraham Miller	English Cottage Revival		3D, 5D2
1474 OAKDALE ST	5736-005-002	1922		C.E. Beaudy	C		Robert G. McMeekins	Italian Renaissance Revival		3D, 5D2
1475 OAKDALE ST	5736-009-013	1923	George Telling	J.V. Russell	C		D.R. Franklin	Spanish Colonial Revival		3D, 5D2
1483 OAKDALE ST	5736-009-009	1923	B.O. Kendall Co	B.O. Kendall Co	C		Dr. Metcalf	French Eclectic		3D, 5D2
1484 OAKDALE ST	5736-005-001	1924	Charles Edward Ruhe	W.B. Haskett	C	Roof	Robert G. McMeekins	Italian Renaissance Revival		3D, 5D2
1488 OAKDALE ST	5736-006-009	1925	David Ogilvie	Peter Hall	C		M. Fay	Spanish Colonial Revival		3D, 5D2
1495 OAKDALE ST	5736-009-010	1924			C		William P. Neil	Spanish Colonial Revival		3D, 5D2
1507 OAKDALE ST	5736-008-001	1923		J.D. Dodd	C		H.J. Ford	Spanish Colonial Revival		3D, 5D2
1510 OAKDALE ST	5736-006-011	1948	Arthur Lavagnino	Dr. Max Delbruck	NC		Dr. Max Delbruck	International Modern Style	Built outside period of significance	6Z
1521 OAKDALE ST	5736-008-002	1925	Kenneth Arthur Gordon	J.H. Woodworth & Son	C		Mrs. Surule E. Forbes	Tudor		3D, 5D2
1530 OAKDALE ST	5736-007-014	1924			C		Albert Mack	French Eclectic		3D, 5D2
1535 OAKDALE ST	5736-008-003	1923	Foss Designing & Building Comp	Foss Designing & Building Comp	C		Mr & Mrs Gilbert Campbell	English Cottage Revival		3D, 5D2
1545 OAKDALE ST	5736-008-004	1925	Charles E. W. Hubbell	Cedric E. Brown	C		Charles E. W. Hubbell	English Cottage Revival		3D, 5D2
1550 OAKDALE ST	5736-007-015	1925	Wm. P. Neil	Wm. P. Neil	C		Wm. P. Neil	Colonial Revival		3D, 5D2
1559 OAKDALE ST	5736-008-005	1923	B.O. Kendall Co	B.O. Kendall Co	C		Eva Coopender	Minimal Traditional		3D, 5D2
1560 OAKDALE ST	5736-007-013	1926	Glenn Elwood Smith	Edward A. Danell	C		W.S. Schoef	Spanish Colonial Revival		3D, 5D2
1571 OAKDALE ST	5736-008-006	1925	H. Brewster	M.A. Probst	C		Prof. Abraham Miller	Spanish Colonial Revival		3D, 5D2
1581 OAKDALE ST	5736-008-007	1924	E. & Morland	White Construction Co	C		A.E. Foote	Spanish Colonial Revival		3D, 5D2
1588 OAKDALE ST	5736-007-011	1929	Parker Ettinger-Gamble Inc	Parker Ettinger-Gamble Inc	C		Parker Ettinger-Gamble Inc	Italian Renaissance Revival		3D, 5D2
1590 OAKDALE ST	5736-007-012	1923			C		I.J. Holloman	Spanish Colonial Revival		3D, 5D2
1591 OAKDALE ST	5736-008-008	1925	Frederick Kennedy Jr	Parker & Gamble, Ltd	C		Gordon Culver	English Cottage Revival		3D, 5D2
1611 OAKDALE ST	5736-017-009	1916			C			Colonial Revival Bungalow		5D2
1621 OAKDALE ST	5736-017-008	1921			C		LeRoy Helfrich	Colonial Revival Bungalow		5D2
1631 OAKDALE ST	5736-017-007	1924		O.H. Osborn	C		H. Hibben	Spanish Colonial Revival		5D2
1637 OAKDALE ST	5736-017-006	1922	Charles Edward Ruhe	Kemp & Haskett	NC	Windows, Porch, Incompatible addition	Harnet K. Hibben			6Z
1645 OAKDALE ST	5736-017-005	1923		Kent J. Mollert	NC	Incompatible additions	Dr. Back		Footprint at front substantially different from records	6Z
1659 OAKDALE ST	5736-017-004	1924	J. Shelton Gordon	J. Shelton Gordon	C		Mrs. Nellie F. Schell	Spanish Colonial Revival		5D2
1671 OAKDALE ST	5736-017-003	1922			C		G.A. Webber		Much of street view obscured by landscaping	5D2
1675 OAKDALE ST	5736-017-002	1921			C		George D. Rix	Craftsman Bungalow		5D2
1677 OAKDALE ST	5736-017-001	1922			NC	Complete exterior remodel	L.R. Jenkins			6Z
1691 OAKDALE ST	5736-021-006	1923	John Michelmore	John Michelmore	C	Cladding texture, parapet coping	John C. & Lily E. Michelmore	Spanish Colonial Revival		5D2
1699 OAKDALE ST	5736-021-005	1923		Donald J. Robertson	NC	Windows, door, cladding, porch	Grace C. Steele			6Z
1707 OAKDALE ST	5736-021-004	1922			C	Windows	J.W. M. Buckles	Craftsman Bungalow		5D2
1710 OAKDALE ST	5736-020-001	1925	Charles E. W. Hubbell	Cedric E. Brown	C		Rex C. Hubbell	English Cottage Revival	Much of street view obscured by landscaping	5D2
1717 OAKDALE ST	5736-021-003	1922			NC	New house	J.W. M. Buckles			6Z
1718 OAKDALE ST	5736-020-002	1922			C	Windows	W.L. Lashman	Tudor		5D2
1724 OAKDALE ST	5736-020-003	1925		M.J. Reprnal	C	Cladding texture	E.M. McWilliams	Spanish Colonial Revival		5D2
1725 OAKDALE ST	5736-021-002	1922			C	Windows	Dr. G. Back	Craftsman Bungalow		5D2
1735 OAKDALE ST	5736-021-001	1922			C		C.J. Platt	Spanish Colonial Revival		5D2
1749 OAKDALE ST	5736-028-007	1923		Donald J. Robertson	C		Grace C. Steele	Colonial Revival Bungalow		5D2
1755 OAKDALE ST	5736-028-006	1922	J.H. Larkin	J.H. Larkin	C	Front door	J.H. Larkin	Craftsman Bungalow		5D2
1762 OAKDALE ST	5736-029-013	1923		Virgil H. Best	C	Windows	Virgil H. Best			5D2
1765 OAKDALE ST	5736-028-005	1921			C	Windows	L.P. Jenkins	Colonial Revival Bungalow		5D2
1770 OAKDALE ST	5736-029-012	1923	J.E. Earenefeight	J.E. Earenefeight	C		J.E. Earenefeight	Spanish Colonial Revival		5D2
1775 OAKDALE ST	5736-028-004	1991			NC	New house			Built outside period of significance	6Z
1776 OAKDALE ST	5736-029-011	1923			C		J.W. Eck	Spanish Colonial Revival		5D2
1780 OAKDALE ST	5736-029-010	1924			C		Miss Clara Kohlsteadt, AC Wilcox	Spanish Colonial Revival		5D2

ATTACHMENT C: INVENTORY OF PROPERTIES

FULL ADDRESS	APN	YEAR BUILT	ARCHITECT	BUILDER	C/N	POSSIBLE ALTERATIONS	ORIGINAL OWNER	STYLE	NOTES	NRHP STATUS CODE
1781 OAKDALE ST	5736-028-003	1924			C		George A. Foss		Much of street view obscured by landscaping	5D2
1787 OAKDALE ST	5736-028-002	1925	Glenn Elwood Smith	J. Doud	C		Miss Clara Kohlsteadt	Tudor		5D2
1790 OAKDALE ST	5736-029-009	1923			C	Compatible addition		Spanish Colonial Revival		5D2
1795 OAKDALE ST	5736-028-001	1924			C			Tudor		5D2
1800 OAKDALE ST	5736-029-008	1923			C		Hugh B. Gerhegan	Period Revival		5D2
1756 ORANGEWOOD ST	5736-029-006	1925	C.M. Moore	C.M. Moore	C		C.M. Moore	Colonial Revival Bungalow		5D2
1756 ORANGEWOOD ST	5736-030-011	1956		John S. Rasford, Rasford & Richmond	NC	New house	H.M. Miller		Built outside period of significance	6Z
1759 ORANGEWOOD ST	5736-029-005	1926	E.T. Sommerstad	E.T. Sommerstad	C	Windows	E.T. Sommerstad	Spanish Colonial Revival		5D2
1760 ORANGEWOOD ST	5736-030-010	1908			C	Cladding, foundation	Samuel P. Sanborn	Craftsman (Arts and Crafts)	Records indicate board & batten siding and brick foundation	5D2
1769 ORANGEWOOD ST	5736-029-004	1926		George M. Bronough	C		George M. Bronough	Spanish Colonial Revival		5D2
1770 ORANGEWOOD ST	5736-030-009	1926		George M. Bronough	C		George M. Bronough	Tudor		5D2
1776 ORANGEWOOD ST	5736-030-008	1926	G.S. Biely	G.S. Biely	C	Windows	C.R. Herr	Spanish Colonial Revival		5D2
1777 ORANGEWOOD ST	5736-029-003	1939			C		E.V. Demard	Minimal Traditional		5D2
1786 ORANGEWOOD ST	5736-030-007	1926	W.T. Robbies	W.T. Robbies	C	Porch	Edwin Wood	Spanish Colonial Revival		5D2
1787 ORANGEWOOD ST	5736-029-002	1923			C	Cladding texture, front door	Mrs. Mildred Whitcomb	Spanish Colonial Revival		5D2
1441 ROSE VILLA ST	5736-010-010	1921			C		Mrs. James W. Thompson	Spanish Colonial Revival		3D, 5D2
1446 ROSE VILLA ST	5736-009-020	1923			C		D.E. & Jane Thompson	Colonial Revival		3D, 5D2
1459 ROSE VILLA ST	5736-010-011	1921			C		H.A. Reuter	French Eclectic		3D, 5D2
1460 ROSE VILLA ST	5736-009-019	1926	Glenn Elwood Smith	George Brandt	C		F.G. Webber	English Cottage Revival		3D, 5D2
1469 ROSE VILLA ST	5736-010-012	1917	Frank M. Tyler	Gregory Pliny	C		L.W. Hill	Craftsman (Arts and Crafts)		3D, 5D2
1474 ROSE VILLA ST	5736-009-014	1917		James H. Baker	NC	Windows, Roof, Cladding	Dr. James Campbell	Craftsman (Arts and Crafts)	Much of street view obscured by landscaping	6Z
1488 ROSE VILLA ST	5736-009-012	1919			C		Dr. J. Rousna	English Cottage Revival		3D, 5D2
1496 ROSE VILLA ST	5736-009-011	1921			C	Addition of side/front porch	Ella M. Hunt	Colonial Revival		3D, 5D2
1497 ROSE VILLA ST	5736-010-017	1920			NC				Flag lot, not visible from street	6Z
1499 ROSE VILLA ST	5736-010-018	1920			C		Stephen C. & Clara S. Tooker	Italian Renaissance Revival		3D, 5D2
1505 ROSE VILLA ST	5736-010-014	1946			NC	Significant alterations and additions	Walter Brandenburg			6Z
1512 ROSE VILLA ST	5736-008-016	1922			C		SE Townsend	French Eclectic		3D, 5D2
1515 ROSE VILLA ST	5736-011-001	1921			C		Harold Hoffman	Spanish Colonial Revival		3D, 5D2
1520 ROSE VILLA ST	5736-008-015	1924	H.L. Doolittle	C.W. Rowe	C		H.L. Doolittle	Monterey Revival		3D, 5D2
1532 ROSE VILLA ST	5736-008-014	1925	Walter Putman	Cedric E. Brown	C		Walter Putman		Much of street view obscured by landscaping	3D, 5D2
1541 ROSE VILLA ST	5736-011-015	1924			C		I. Wegess	Spanish Colonial Revival		3D, 5D2
1546 ROSE VILLA ST	5736-008-013	1924		Cedric E. Brown	C		James F. Chamberlain	English Cottage Revival		3D, 5D2
1551 ROSE VILLA ST	5736-011-016	1928	Mellan & Hayes	Dan Mitchell	C		Dan Mitchell	Italian Renaissance Revival		3D, 5D2
1559 ROSE VILLA ST	5736-011-017	1927	Mellan & Hayes	Dan Mitchell	C		Dan Mitchell	Spanish Colonial Revival		3D, 5D2
1560 ROSE VILLA ST	5736-008-012	1928	L.S. Gamble	L.S. Gamble	C		L.S. Gamble	Tudor		3D, 5D2
1570 ROSE VILLA ST	5736-008-011	1926	R.P. Edmonston	R.P. Edmonston	C		L.S. Gamble	Tudor		3D, 5D2
1571 ROSE VILLA ST	5736-011-018	1926			C	Porch	C.F. Sahle	English Cottage Revival	Permit records indicate addition of porch cover in 1959	3D, 5D2
1582 ROSE VILLA ST	5736-008-010	1927		C.F. Sahle	C		C.F. Sahle	French Eclectic		3D, 5D2
1583 ROSE VILLA ST	5736-011-005	1926	H.R. Bremster	C.F. Sahle	C		J.M. Kenn	English Cottage Revival		3D, 5D2
1586 ROSE VILLA ST	5736-011-004	1924		C.M. Widess	C		C.M. Widess	English Cottage Revival	on same APN as 265 S. Sierra Bonita Ave	5D2
1596 ROSE VILLA ST	5736-008-009	1927	George E. Cavell	F.L. Marshall	C	Porch	F.L. Marshall	Italian Renaissance Revival	Records show larger front porch	3D, 5D2
1612 ROSE VILLA ST	5736-017-010	1920			C	Roof	J.B. Morrow	Spanish Colonial Revival		5D2
1615 ROSE VILLA ST	5736-016-009	1923		Ray C. & Grace Mather Perkins	C		Ray C. & Grace Mather Perkins	Colonial Revival		5D2
1620 ROSE VILLA ST	5736-017-011	1914	Tony E. Anderson	Tony E. Anderson	C	Porch railing	Marie K. Anderson	Craftsman (Arts and Crafts)		5D2
1621 ROSE VILLA ST	5736-016-008	1923		Depew & Shan	C		F. Hasly	Colonial Revival Bungalow		5D2
1630 ROSE VILLA ST	5736-017-012	1914		P.W. Stoner	C		P.W. Stoner	Craftsman Bungalow		5D2
1631 ROSE VILLA ST	5736-016-007	1922		Dr. A.H. Callison	C		Dr. A.H. Callison	Colonial Revival Bungalow		5D2
1636 ROSE VILLA ST	5736-017-013	1920			C		Lorla E. Smith	Craftsman (Arts and Crafts)		5D2
1637 ROSE VILLA ST	5736-016-006	1920			C		O.E. Folk	Colonial Revival Bungalow		5D2
1644 ROSE VILLA ST	5736-017-014	1923	Glenn Elwood Smith	R.R. Seeds	C		R.R. Seeds	English Cottage Revival		5D2
1645 ROSE VILLA ST	5736-016-005	1921			NC	Cladding, windows, chimney	Minnie L. Haskett	English Cottage Revival		6Z
1652 ROSE VILLA ST	5736-017-015	1916		Harlan P. Phelps	C		T. Breavender (Mrs.)	Craftsman (Arts and Crafts)		5D2
1653 ROSE VILLA ST	5736-016-004	1921			C		Mrs. Mary Hill	English Cottage Revival		5D2
1660 ROSE VILLA ST	5736-017-016	1925	Mount Vrain Bldg Co	Mount Vrain Bldg Co	C		Fred Molander	Spanish Colonial Revival		5D2
1661 ROSE VILLA ST	5736-016-003	1913	Alfred W. Hookway	Alfred W. Hookway	C		W.H. Adams	Craftsman (Arts and Crafts)		5D2
1666 ROSE VILLA ST	5736-017-017	1913		Alfred W. Hookway	C		M.V. Dobson	Craftsman Bungalow		5D2
1671 ROSE VILLA ST	5736-016-002	1920			C	Compatible additions	A.W. Marcy	Colonial Revival Bungalow	1948 front addition, small second-story addition 2004	5D2
1676 ROSE VILLA ST	5736-017-018	1923			NC	Windows, cladding, roof, incompatible additions	John C. & Lily E. Michelmore			6Z
1679 ROSE VILLA ST	5736-016-001	1921			C		J.M. Johnson	Spanish Colonial Revival		5D2
1692 ROSE VILLA ST	5736-021-007	1914		Tony E. Anderson	C		Marie K. Anderson	Craftsman (Arts and Crafts)	Airplane bungalow	5D2
1695 ROSE VILLA ST	5736-022-006	1920	Lrus L. Karns	Chester R. Pyle Co	NC	Windows, Porch, Incompatible addition	J.W. Smith			6Z
1700 ROSE VILLA ST	5736-021-008	1921			C		Lew S. Jamerson	Craftsman Bungalow		5D2
1703 ROSE VILLA ST	5736-022-005	1914		Tony E. Anderson	C	Windows (side)	Marie K. Anderson	Craftsman Bungalow		5D2
1707 ROSE VILLA ST	5736-022-004	1916	Alfred W. Hookway	Alfred W. Hookway	C		Alfred W. Hookway	Colonial Revival Bungalow		5D2
1710 ROSE VILLA ST	5736-021-009	1921		Rita G. Lane	C		Rita G. Lane	Colonial Revival Bungalow		5D2
1716 ROSE VILLA ST	5736-021-010	1912		Phelps (H.P.) & Grinton (W.A.)	C		Phelps & Grinton	Craftsman Bungalow		5D2
1719 ROSE VILLA ST	5736-022-003	1920	Shepherd and Hamm	Shepherd and Hamm	C		P.M. Roth	Colonial Revival Bungalow		5D2
1724 ROSE VILLA ST	5736-021-011	1914		Tony E. Anderson	C	Cladding	Marie K. Anderson	Craftsman Bungalow	Records show original cladding was wood shingles	5D2
1725 ROSE VILLA ST	5736-022-002	1916	Alfred W. Hookway	Alfred W. Hookway	C		J.A. Anderson		Much of street view obscured by landscaping	5D2
1730 ROSE VILLA ST	5736-021-012	1921	William J. Buckles	William J. Buckles	C		William J. Buckles	Spanish Colonial Revival		5D2
1735 ROSE VILLA ST	5736-022-001	1921		Clark Kester	C		Clark Kester	Colonial Revival Bungalow		5D2
1750 ROSE VILLA ST	5736-028-008	1922		Grace Jenkins	C		Grace Berkes	Colonial Revival Bungalow		5D2
1751 ROSE VILLA ST	5736-027-007	1924	R. Seeger	R. Seeger	C		R. Seeger	Vernacular Bungalow	Boulder bungalow	5D2
1756 ROSE VILLA ST	5736-028-009	1920	Lrus L. Karns	Chester R. Pyle Co	C		Isabella Cass	Craftsman Bungalow		5D2
1757 ROSE VILLA ST	5736-027-006	1923		S.A. Roberts	C	Windows	Mrs. E.W. Graham	Spanish Colonial Revival		5D2
1764 ROSE VILLA ST	5736-028-010	1916		Alfred W. Hookway	C		Chester R. Pyle	Craftsman (Arts and Crafts)		5D2

ATTACHMENT C: INVENTORY OF PROPERTIES

FULL ADDRESS	APN	YEAR BUILT	ARCHITECT	BUILDER	C/N	POSSIBLE ALTERATIONS	ORIGINAL OWNER	STYLE	NOTES	NRHP STATUS CODE
1765 ROSE VILLA ST	5736-027-005	1917		Chester R Pyle	C		Chester R Pyle	Craftsman Bungalow		5D2
1772 ROSE VILLA ST	5736-028-011	1922		H A Haegerman	C		Mrs Round	English Cottage Revival		5D2
1775 ROSE VILLA ST	5736-027-004	1921			C			Colonial Revival Bungalow		5D2
1782 ROSE VILLA ST	5736-028-012	1913			C			Craftsman (Arts and Crafts)		5D2
1783 ROSE VILLA ST	5736-027-003	1913			C	Cladding		Craftsman Bungalow	Records indicate wood shingle cladding	5D2
1790 ROSE VILLA ST	5736-028-013	1923			C		J Brown	Vernacular Hippest Cottage		5D2
1791 ROSE VILLA ST	5736-027-002	1922			C			English Cottage Revival		5D2
1794 ROSE VILLA ST	5736-028-014	1921			C			Colonial Revival		5D2
1799 ROSE VILLA ST	5736-027-001	1920			NC	Windows, door, incompatible additions			Comparison with 1931 Sanborn Map indicates major footprint changes	6Z
1821 ROSE VILLA ST	5330-021-004	1939			C			English Cottage Revival		5D2
1834 ROSE VILLA ST	5330-022-006	1925			C			Colonial Revival Bungalow		5D2
1441 SAN PASQUAL ST	5736-005-019	1931	Gene Verge	F B Klock	C		F B Klock	Spanish Colonial Revival		3D, 5D2
1450 SAN PASQUAL ST	5327-005-001	1922			C		WS Johnson & WH Plumber	Colonial Revival		3D, 5D2
1485 SAN PASQUAL ST	5736-005-027	1923	Kenneth Arthur Gordon	J H Woodworth & Son	C		J H Stewart	Colonial Revival		3D, 5D2
1486 SAN PASQUAL ST	5327-006-008	2010			NC	New house	David Wyndhamsmith		Built outside period of significance	6Z
1470 SAN PASQUAL ST	5327-005-007	1924	Bennett & Haskell	Bennett & Haskell	C		J D Mackerras	Period Revival		3D, 5D2
1475 SAN PASQUAL ST	5736-005-028	2009			NC	New house			Flag lot, not visible from street, built outside period of significance	6Z
1485 SAN PASQUAL ST	5736-005-015	1922	Wallace Neff	Kemp & Haskett	C		J K Bailie	Colonial Revival		3D, 5D2
1488 SAN PASQUAL ST	5327-008-006	1924	Foss Designing & Building Comp	Foss Designing & Building Comp	C		H M Carter	Colonial Revival		3D, 5D2
1495 SAN PASQUAL ST	5736-006-001	1986		Elmer Bensen	NC	New house	Elmer Bensen		Built outside period of significance	6Z
1500 SAN PASQUAL ST	5327-006-005	1924	H H Martin	F H Ruppel	NC	Major additions to front of house	Mrs M H Fletcher	Spanish Colonial Revival		6Z
1505 SAN PASQUAL ST	5736-006-002	1955		Englund	NC		Schrederschek	California Ranch	Built outside period of significance	6Z
1535 SAN PASQUAL ST	5736-007-023	1951		Mr & Mrs A R Benedict	NC		Mr & Mrs A R Benedict	Modern Ranch	Built outside period of significance	6Z
1540 SAN PASQUAL ST	5327-008-004	1925	Norton & Wallis	Ben K Tanner	NC		Florence Duesenberg	Spanish Colonial Revival		6Z
1550 SAN PASQUAL ST	5327-006-003	1924	Wallace Neff		C		F E Newbury	Spanish Colonial Revival		5D2
1565 SAN PASQUAL ST	5736-007-027	1926			C			Colonial Revival		3D, 5D2
1570 SAN PASQUAL ST	5327-006-002	1926	Builder's Plan Service	H T Newland	C		H T Newland	Spanish Colonial Revival		5D2
1575 SAN PASQUAL ST	5736-007-004	1930			C		W H Norwood	Italian Renaissance Revival		5D2
1600 SAN PASQUAL ST	5327-006-018	1928	Green & Hageman	Edmund Gray	C		Edmund A Gray	Italian Renaissance Revival		5D2, 5S2
1717 SAN PASQUAL ST	5736-020-011	1926	B O Kendall Co	B O Kendall Co	C		M B Duesenberg	Italian Renaissance Revival		5D2
1735 SAN PASQUAL ST	5736-030-012	1926	B O Kendall Co	B O Kendall Co	C		B O Kendall Co	Monterey Revival		5D2
1767 SAN PASQUAL ST	5736-030-005	1907			C			Craftsman Bungalow		5D2
1775 SAN PASQUAL ST	5736-030-004	1929	John Paul Jones	H M Paine	C		H M Paine	Spanish Colonial Revival		5D2
1795 SAN PASQUAL ST	5736-030-001	1916		John H Shelton	NC	Significant alterations and additions	R W Caspers		House moved from 44 N Hudson Ave in 1925	6Z
1815 SAN PASQUAL ST	5330-022-028	1933	Ron Montgomery & Wm Mullay	Clarence Brenning	C		Miss E N Corcoran	Period Revival		5D2
1820 SAN PASQUAL ST	5329-007-019	1924	O M Scott	O M Scott	C		Francis Knoll	Colonial Revival		5D2
265 S SIERRA BONITA AVE	5736-011-004	1952		O G Dressler	NC		O G Dressler	California Ranch	on same APN as 1565 Rose Villa St, built outside period of significance	6Z
381 S SIERRA BONITA AVE	5736-007-010	1932		H F Laffer	C		E H Lovell	Italian Renaissance Revival		5D2
393 S SIERRA BONITA AVE	5736-007-009	1926	E H Hayes	Fred C Schallan	C		Gustav O Cillax	Spanish Colonial Revival		5D2
405 S SIERRA BONITA AVE	5736-007-008	1923	L C Brookway	R L Housley	C		I O Kemble	Colonial Revival		5D2
421 S SIERRA BONITA AVE	5736-007-007	1924		Chas E Post	C	Windows, Roof	Mrs David Fuller (Hugh R Kennedy)	Period Revival		5D2