



- MP0.0 COVER
- MP1.0 SITE PLAN - EXISTING
- MP1.1 SITE PLAN - PHASE 1
- MP1.2 SITE PLAN - PHASE 2
- MP1.3 SITE PLAN - PHASE 3
- MP1.4A EXISTING PARKING AND DRIVEWAYS
- MP1.4B INTERIM PARKING AND DRIVEWAYS
- MP1.4C MASTERPLAN PARKING AND DRIVEWAYS
- MP1.5 PHASE 1 - AERIAL VIEW
- MP1.6 PHASE 2 - AERIAL VIEW
- MP1.7 CAMPUS 3D STUDIES
- MP2.1 CONCEPTUAL LOWER LEVEL PLAN
- MP2.2 CONCEPTUAL GROUND FLOOR PLAN
- MP2.3 CONCEPTUAL UPPER LEVEL PLAN
- MP3.1 CAMPUS ELEVATIONS
- MP3.2 CAMPUS SECTIONS
- MP3.3 CAMPUS SECTIONS
- MP4.1 LANDSCAPE PLAN
- MP4.2 LANDSCAPE PLANT IMAGES
- MP5.0 EXISTING CAMPUS PERIMETER PHOTOS
- MP6.0 EXISTING TOPOGRAPHIC MAP
- MP7.0 EXISTING ENCUMBRENCE MAP



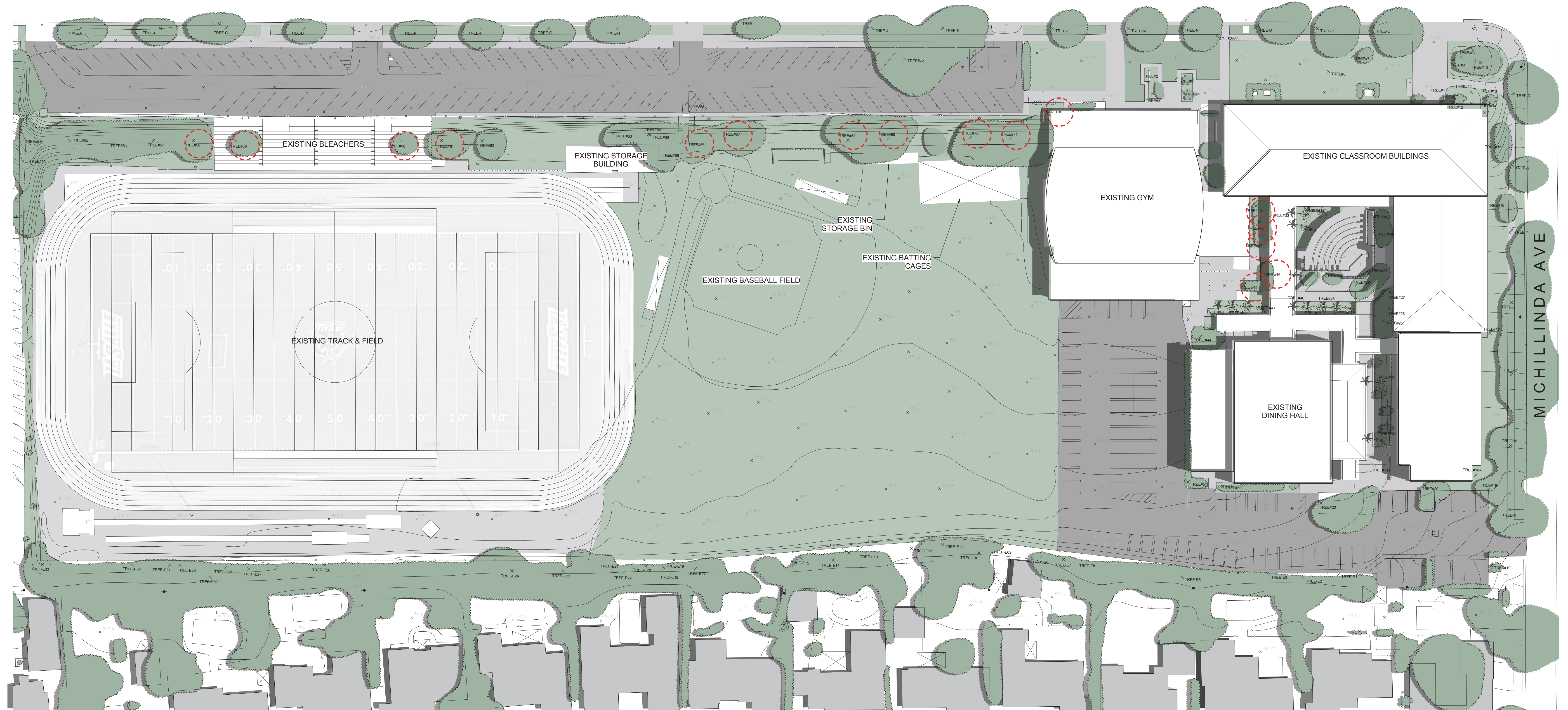
LA SALLE HIGH SCHOOL - CAMPUS MASTER PLAN

LA SALLE HIGH SCHOOL

COVER | MP0.0

GONZALEZ GOODALE ARCHITECTS
WWW.GONZALEZGOODALE.COM

5/6/16



EXISTING TREE LEGEND

ON SITE:

- TO BE REMOVED** → TREE #1: QUEEN PALM
- TREE #2: PYGMY DATE PALM
- TREE #3: PYGMY DATE PALM
- TREE #4: PYGMY DATE PALM
- TREE #5: PYGMY DATE PALM
- TREE #6: CRAPE MYRTLE
- TREE #7: CRAPE MYRTLE
- TREE #8: PYGMY DATE PALM
- TREE #9: QUEEN PALM
- TREE #10: PYGMY DATE PALM
- TREE #11: PYGMY DATE PALM
- TREE #12: PYGMY DATE PALM
- TREE #13: PYGMY DATE PALM
- TREE #14: PYGMY DATE PALM
- TREE #15: PINK TABEBUIA
- TREE #16: PINK TABEBUIA
- TREE #17: PINK TABEBUIA
- TREE #18: PINK TABEBUIA
- TREE #18A: HOLLYWOOD JUNIPER
- TREE #19: PINK TABEBUIA
- TREE #20: PAPERBARK
- TREE #21: PAPERBARK
- TREE #22: ENGELMANN OAK (PROTECTED)
- TREE #23: KENTIA PALM
- TREE #24: KENTIA PALM
- TREE #25: PAPERBARK

- TREE #26: PAPERBARK
- TREE #27: PAPERBARK
- TREE #28: PAPERBARK
- TREE #29: PAPERBARK
- TREE #30: PAPERBARK
- TREE #31: PAPERBARK
- TREE #32: QUEEN PALM
- TREE #33: QUEEN PALM
- TREE #34: QUEEN PALM
- TREE #35: PAPERBARK
- TREE #36: PAPERBARK
- TREE #37: QUEEN PALM
- TREE #38: QUEEN PALM
- TREE #39: QUEEN PALM
- TREE #40: QUEEN PALM
- TREE #41: QUEEN PALM
- TREE #42: QUEEN PALM
- TREE #43: QUEEN PALM
- TREE #44: PAPERBARK
- TREE #45: PAPERBARK
- TREE #46: PAPERBARK
- TREE #47: PAPERBARK
- TREE #48: PAPERBARK
- TREE #49: PAPERBARK
- TREE #50: HOLLYWOOD JUNIPER

- TREE #51: KING PALM
- TREE #52: ITALIAN STONE PINE
- TREE #53: COAST LIVE OAK
- TREE #54: VICTORIAN BOX
- TREE #55: AMERICAN SWEETGUM
- TREE #56: AMERICAN SWEETGUM
- TREE #57: AMERICAN SWEETGUM
- TREE #58: AMERICAN SWEETGUM (PROTECTED)
- TREE #59: AMERICAN SWEETGUM
- TREE #60: AMERICAN SWEETGUM
- TREE #61: AMERICAN SWEETGUM
- TREE #62: AMERICAN SWEETGUM
- TREE #63: AMERICAN SWEETGUM
- TREE #64: AMERICAN SWEETGUM
- TREE #65: AMERICAN SWEETGUM
- TREE #66: AMERICAN SWEETGUM
- TREE #67: AMERICAN SWEETGUM
- TREE #68: AMERICAN SWEETGUM
- TREE #69: AMERICAN SWEETGUM
- TREE #70: AMERICAN SWEETGUM
- TREE #71: AMERICAN SWEETGUM (PROTECTED)
- TREE #72: ENGELMANN OAK (PROTECTED)

CITY RIGHT OF WAY:

- TREE #A: AMERICAN SWEETGUM
- TREE #B: AMERICAN SWEETGUM
- TREE #C: AMERICAN SWEETGUM
- TREE #D: AMERICAN SWEETGUM
- TREE #E: AMERICAN SWEETGUM
- TREE #F: AMERICAN SWEETGUM
- TREE #G: AMERICAN SWEETGUM
- TREE #H: AMERICAN SWEETGUM
- TREE #I: AMERICAN SWEETGUM
- TREE #J: AMERICAN SWEETGUM
- TREE #K: AMERICAN SWEETGUM
- TREE #L: AMERICAN SWEETGUM
- TREE #M: AMERICAN SWEETGUM
- TREE #N: AMERICAN SWEETGUM
- TREE #O: AMERICAN SWEETGUM
- TREE #P: AMERICAN SWEETGUM
- TREE #Q: AMERICAN SWEETGUM
- TREE #R: CANARY ISLAND PINE
- TREE #S: CANARY ISLAND PINE
- TREE #T: CANARY ISLAND PINE
- TREE #U: CANARY ISLAND PINE
- TREE #V: CANARY ISLAND PINE
- TREE #W: CANARY ISLAND PINE
- TREE #X: CANARY ISLAND PINE

UTILITY EASEMENT:

- TREE #E1 - E33: VARIES

REPLACEMENT OF PROTECTED TREES:

- TWO PROTECTED TREES WILL BE REMOVED.
- SEE SHEET MP4.1 FOR LISTING OF PROPOSED REPLACEMENT TREES.
- NOTE THAT THE TOP HALVES OF TREES #66, #69, AND #71 BROKE OFF DURING A 2011 WIND STORM.

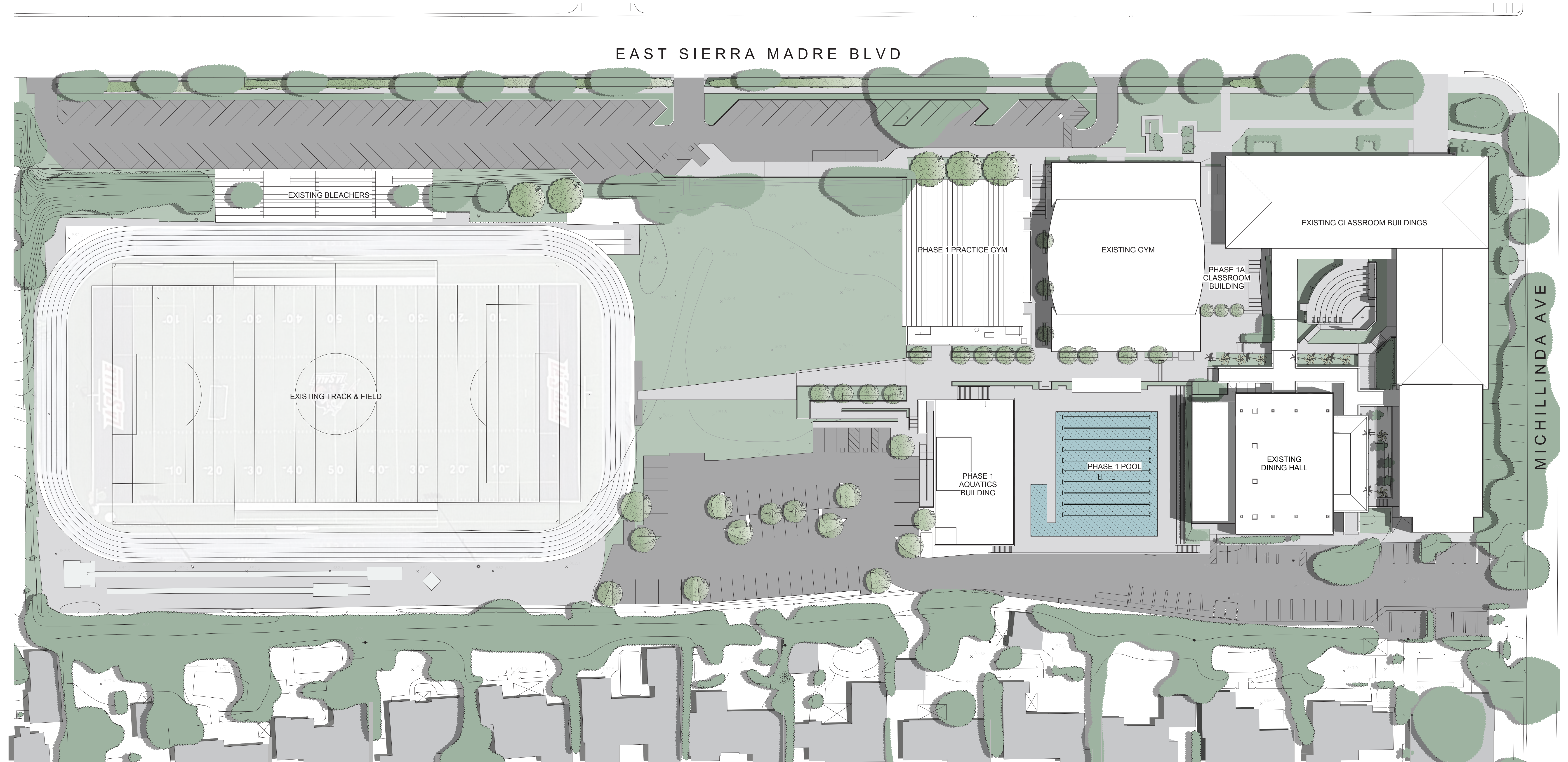
TO BE REMOVED →

TO BE REMOVED →

TO BE REMOVED →



⊕ If this sheet is smaller than 42" high by 30" wide then it has been reduced.



LA SALLE HIGH SCHOOL

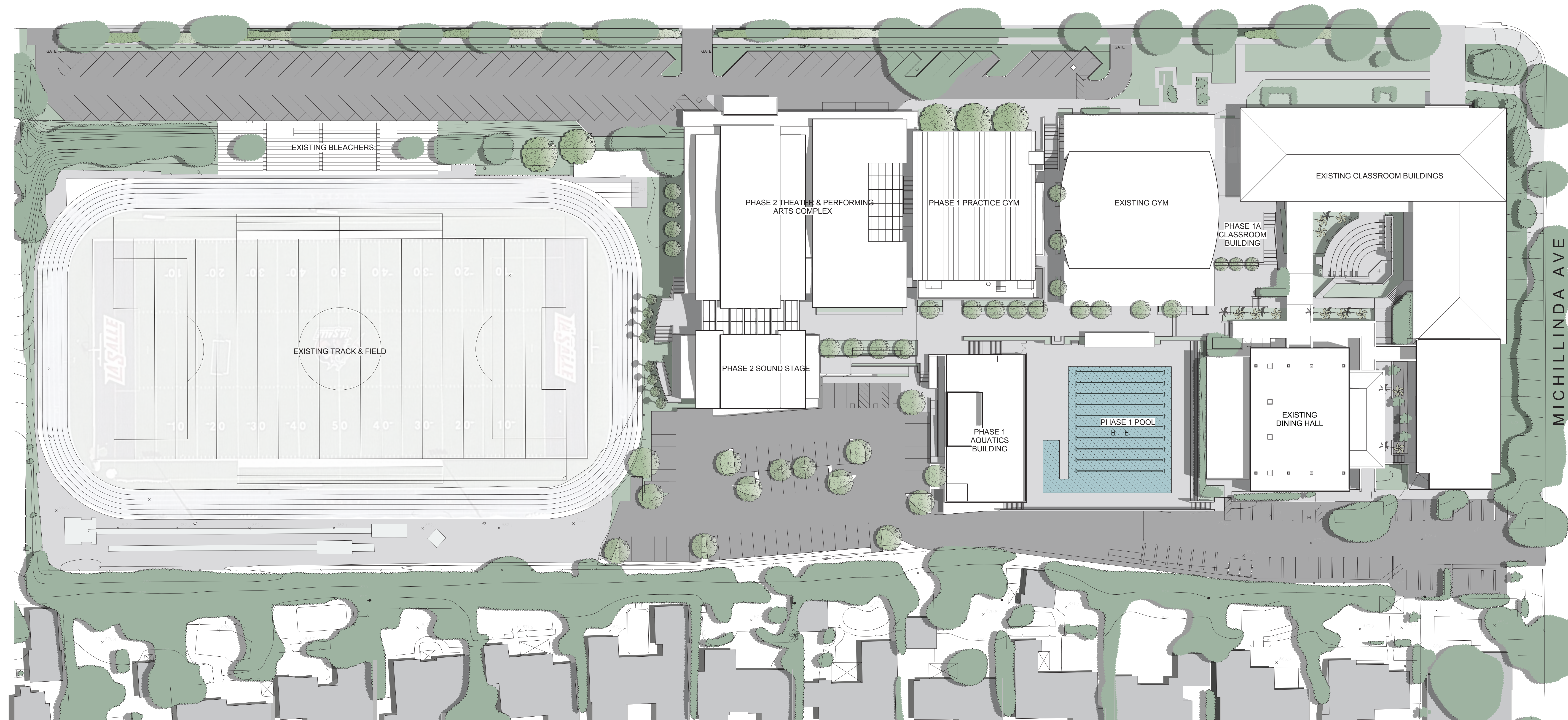
LA SALLE HIGH SCHOOL

SITE PLAN - PHASE 1 | MP1.1

GONZALEZ GOODALE ARCHITECTS | SCALE: 1/32" = 1'-0"
 WWW.GONZALEZGOODALE.COM | 5/6/16

If this sheet is smaller than 42" high by 30" wide then it has been reduced.

EAST SIERRA MADRE BLVD



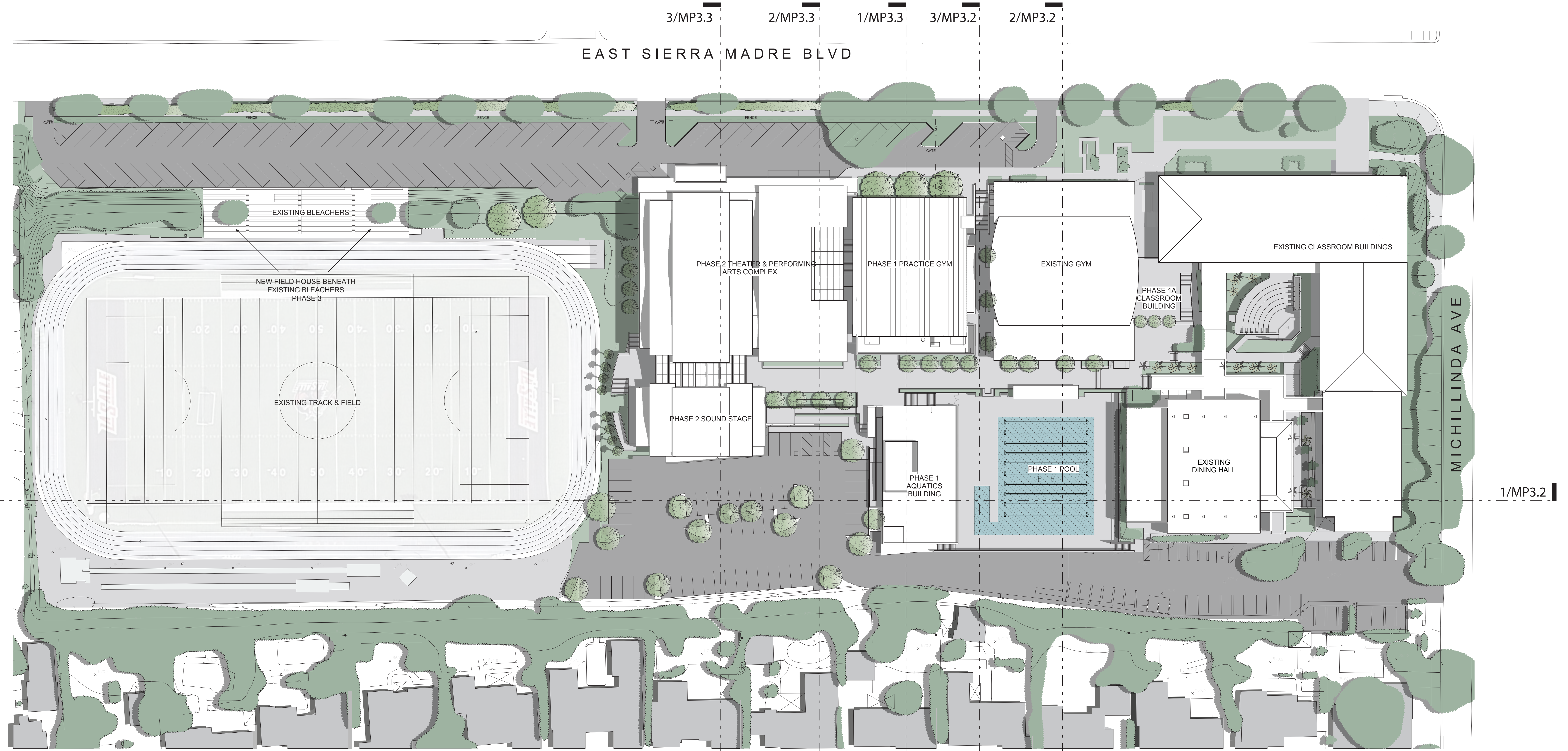
LA SALLE HIGH SCHOOL

LA SALLE HIGH SCHOOL

SITE PLAN - PHASE 2 | MP1.2

GONZALEZ GOODALE ARCHITECTS
WWW.GONZALEZGOODALE.COM
SCALE: 1/32" = 1'-0"
5/6/16

If this sheet is smaller than 42" high by 30" wide then it has been reduced.



INDOOR CLASSROOM AREA	
REQUIRED (Per Zoning Code 17.50.270)	
STUDENTS = 780	SF/STUDENT = 24sf
TOTAL REQUIRED = 18,720sf	
PROVIDED	
EXISTING BUILDINGS = 24,000sf	PHASE 2 PERF. ARTS BLDG = 3,800sf
TOTAL PROVIDED = 27,800sf	

OUTDOOR PLAY AREA	
REQUIRED (Per Zoning Code 17.50.270)	
STUDENTS = 780	SF/STUDENT = 125sf
TOTAL REQUIRED = 97,500sf	
PROVIDED	
TOTAL PROVIDED = 119,000sf (EXISTING TRACK AND FIELD)	



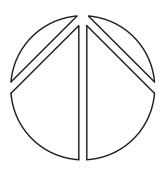
LA SALLE HIGH SCHOOL

LA SALLE HIGH SCHOOL

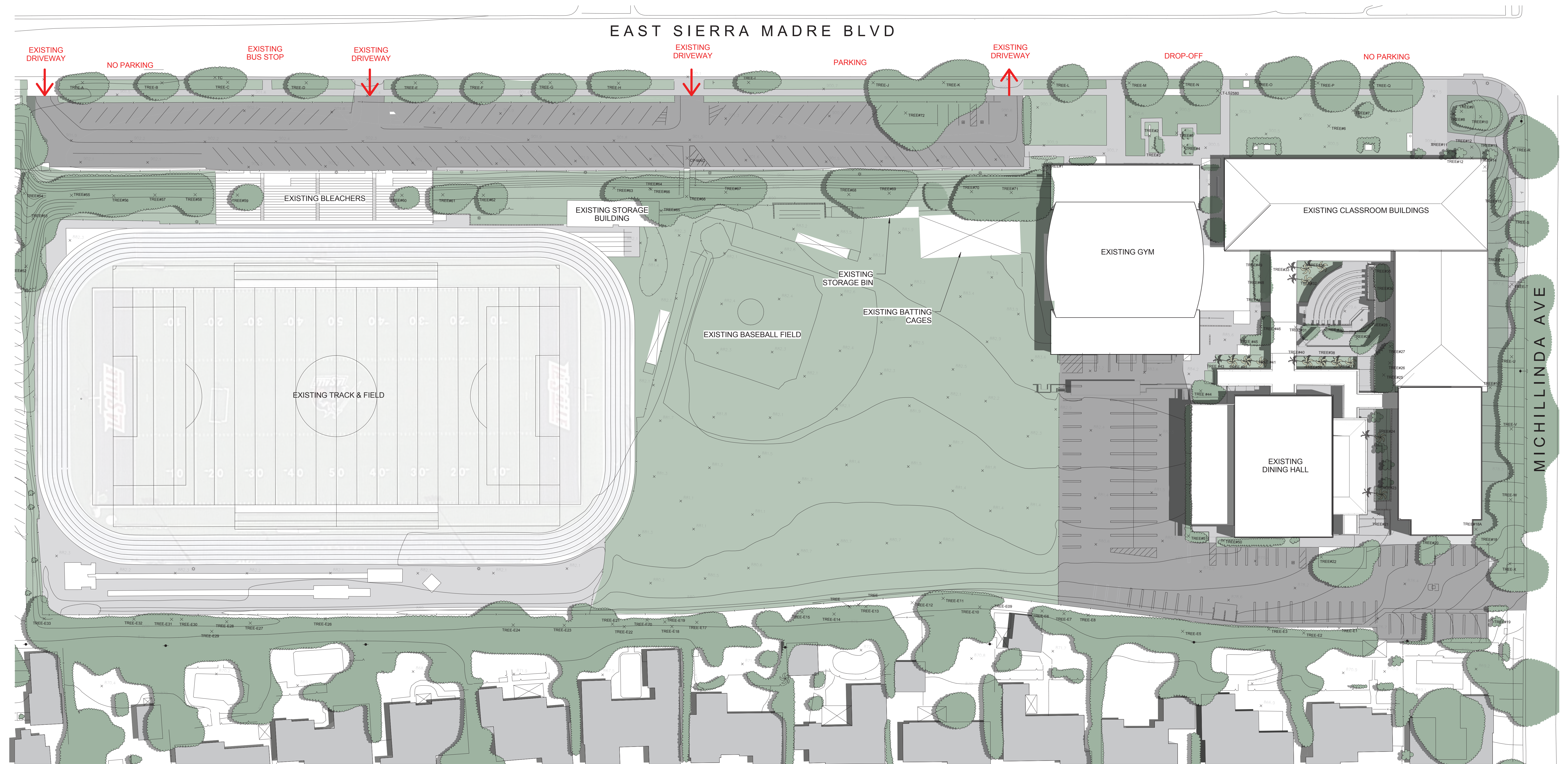
SITE PLAN - PHASE 3 | MP1.3

GONZALEZ GOODALE ARCHITECTS
WWW.GONZALEZGOODALE.COM

5/6/16



If this sheet is smaller than 42" high by 30" wide then it has been reduced.



EXISTING PARKING COUNT	
REQUIRED (Per Zoning Code 17.46.040)	
STUDENTS (780/5) =	156 SPACES
FACULTY (90/2) =	145 SPACES
TOTAL =	201 SPACES
PROVIDED	
NORTH PARKING LOT =	100 SPACES
SOUTH PARKING LOT =	92 SPACES
OFF-SITE PARKING =	50 SPACES
TOTAL =	242 SPACES



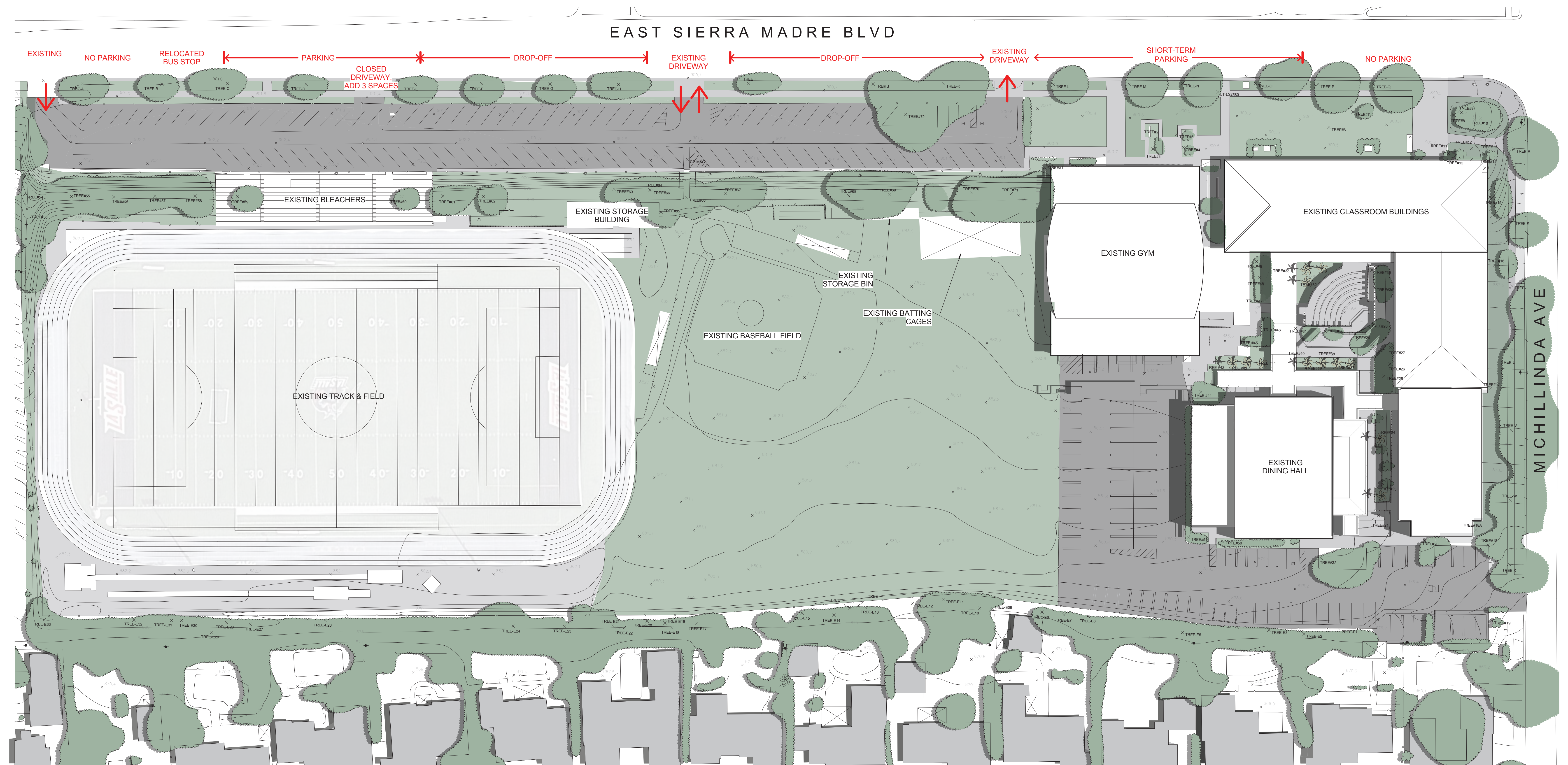
LA SALLE HIGH SCHOOL - CAMPUS MASTER PLAN

LA SALLE HIGH SCHOOL

EXISTING PARKING AND DRIVEWAYS | MP1.4A

GONZALEZ GOODALE ARCHITECTS
WWW.GONZALEZGOODALE.COM

⊕ If this sheet is smaller than 42" high by 30" wide then it has been reduced.

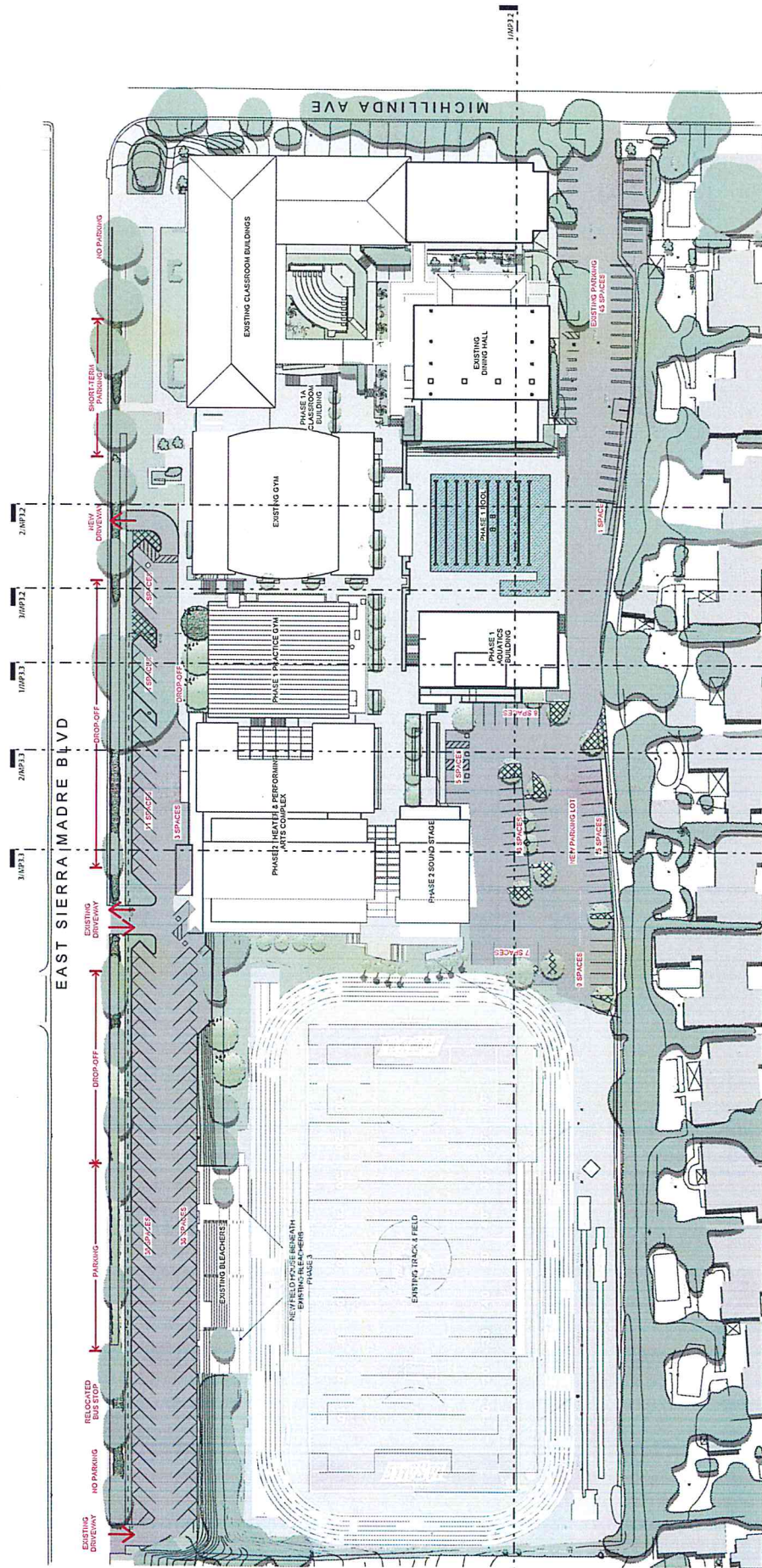


IMPLEMENTATION OF INTERIM PARKING AND DRIVEWAY REVISIONS PLANNED FOR SPRING BREAK 2016 (3/24 - 4/3/16) OR SUMMER 2016, DEPENDENT UPON CITY APPROVAL AND COORDINATION.

PROPOSED PARKING COUNT	
REQUIRED (Per Zoning Code 17.46.040)	
STUDENTS (780/5) =	156 SPACES
FACULTY (90/2) =	145 SPACES
TOTAL =	201 SPACES
PROVIDED*	
NORTH PARKING LOT =	103 SPACES
SOUTH PARKING LOT =	92 SPACES
OFF-SITE PARKING =	50 SPACES
TOTAL =	245 SPACES



* If this sheet is smaller than 42" high by 30" wide then it has been reduced.



PARKING LOT LANDSCAPING
 REQUIRED (Per Zoning Code 17.46.230)
 LOTS UNDER 100 SPACES:
 5% OF PARKING LOT AREA IS REQUIRED TO BE LANDSCAPED

PARKING LOT	LOT AREA	L-SCAPE AREA
(E) NORTH PARKING LOT	N/A - EXISTING LOT	
(N) NORTH PARKING LOT	6,070 sf	540 sf (8.8%)
(E) SOUTH PARKING LOT	N/A - EXISTING LOT	
(N) SOUTH PARKING LOT	24,460 sf	1,430 sf (5.8%)

PROPOSED PARKING COUNT
 REQUIRED (Per Zoning Code 17.46.040)

STUDENTS (780/5)	= 156 SPACES
FACULTY (95/2)	= 148 SPACES
TOTAL	= 204 SPACES

PROVIDED*

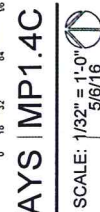
NORTH PARKING LOT	= 96 SPACES
SOUTH PARKING LOT	= 108 SPACES
TOTAL	= 204 SPACES

IDED UPON COMPLETION OF PHASE 1

***ALL PROPOSED SPACES AND LANDSCAPING WILL BE PROVIDED UPON COMPLETION OF PHASE 1**

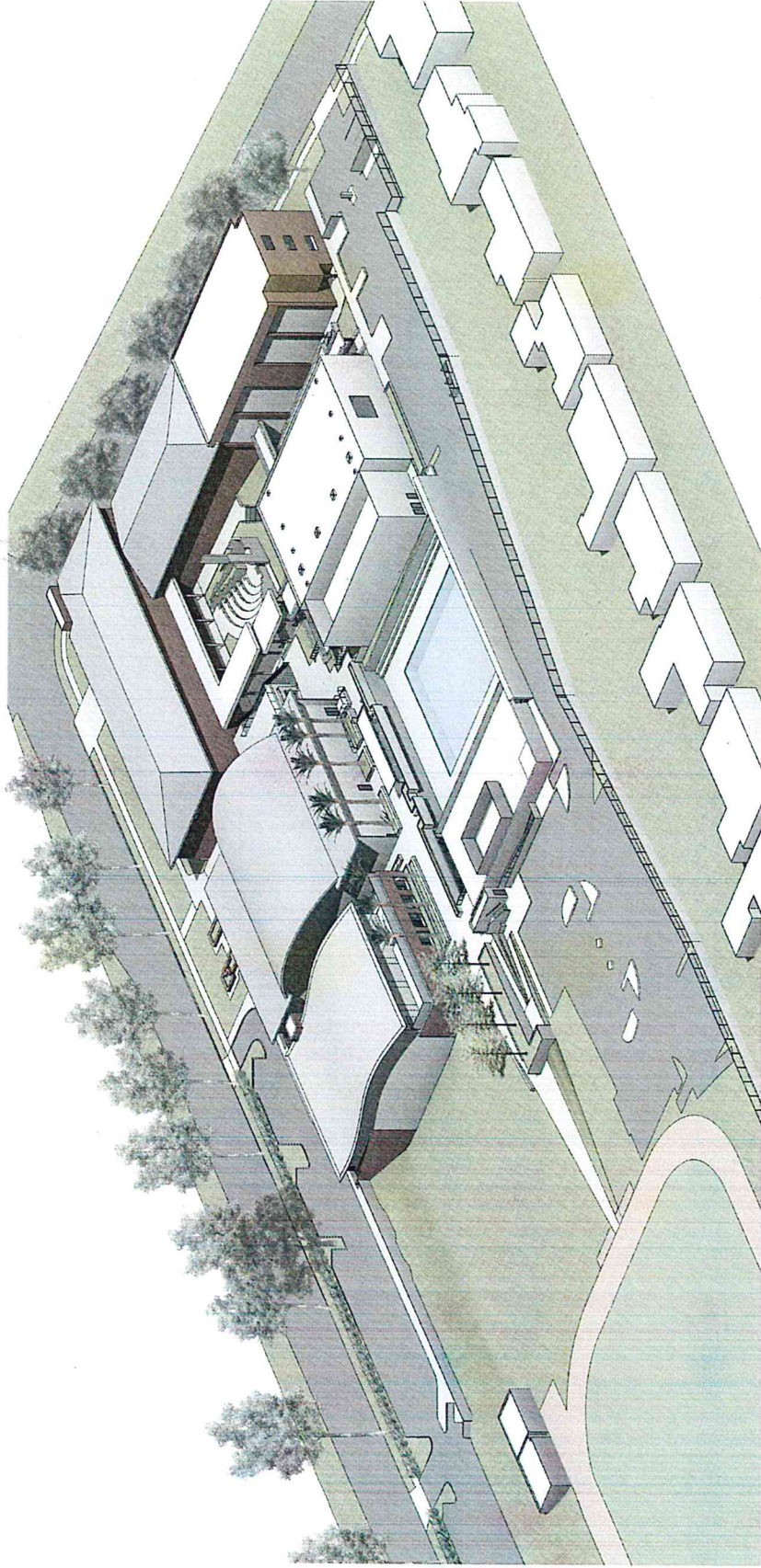
LA SALLE HIGH SCHOOL - CAMPUS MASTER PLAN

MASTERPLAN PARKING AND DRIVEWAYS | MP1.4C



LA SALLE HIGH SCHOOL

SCALE: 1/32" = 1'-0"
5/6/16



LA SALLE HIGH SCHOOL - CAMPUS MASTER PLAN

PHASE 1 - AERIAL VIEW | MP1.5



LA SALLE HIGH SCHOOL

Architect: [unreadable]

5/6/16



LA SALLE HIGH SCHOOL - CAMPUS MASTER PLAN

LA SALLE HIGH SCHOOL

PHASE 2 - AERIAL VIEW | MP1.6

GONZALEZ GOODALE ARCHITECTS
WWW.GONZALEZGOODALE.COM

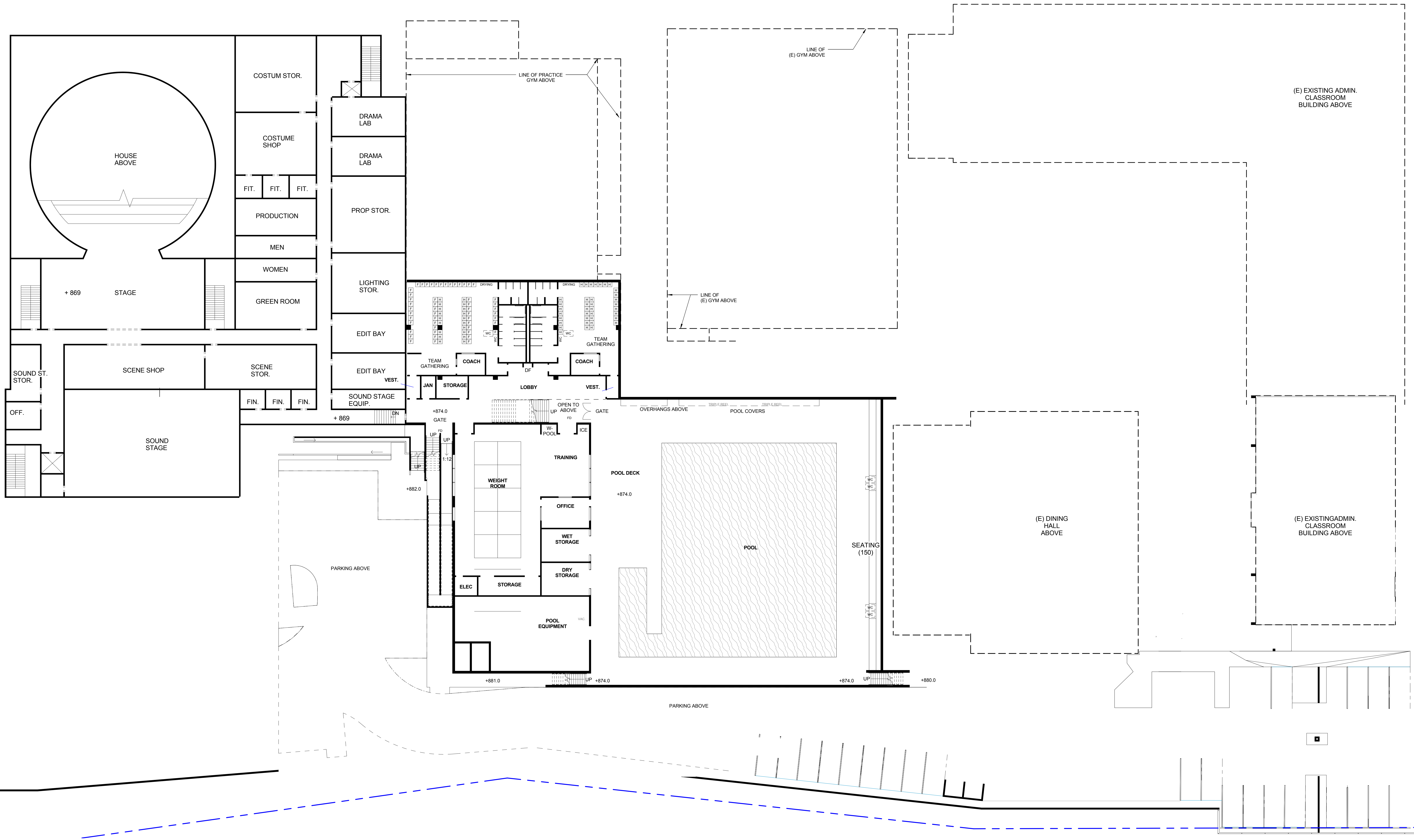


VIEW WEST FROM POOL DOWN PROMENADE



VIEW UP TO NEW ENTRY FROM EXISTING QUAD





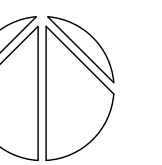
LA SALLE HIGH SCHOOL - CAMPUS MASTER PLAN

LA SALLE HIGH SCHOOL

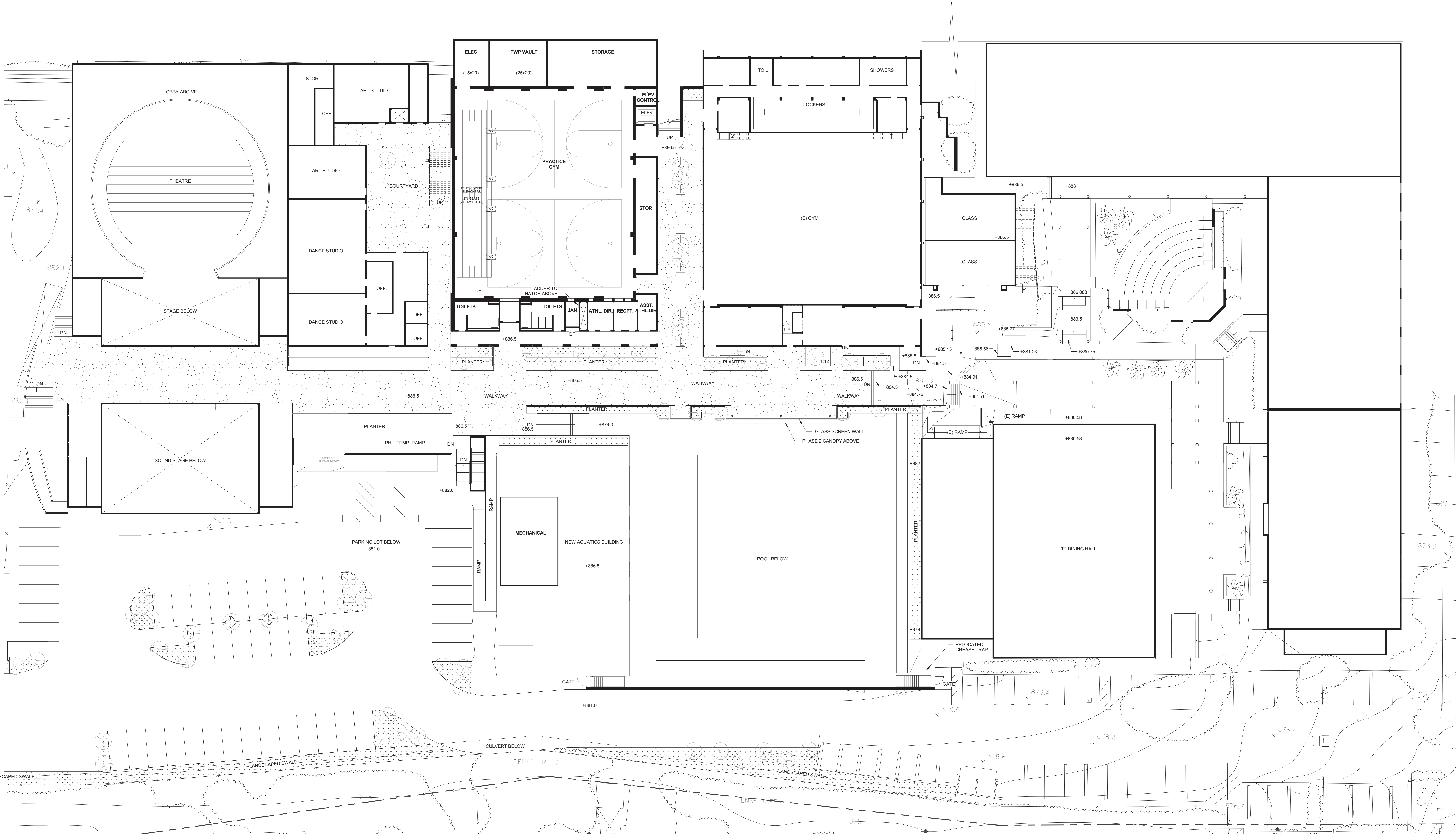
CONCEPTUAL LOWER LEVEL PLAN | MP2.1

GONZALEZ GOODALE ARCHITECTS
WWW.GONZALEZGOODALE.COM

5/6/16



⊕ If this sheet is smaller than 42" high by 30" wide then it has been reduced.



LA SALLE HIGH SCHOOL - CAMPUS MASTER PLAN

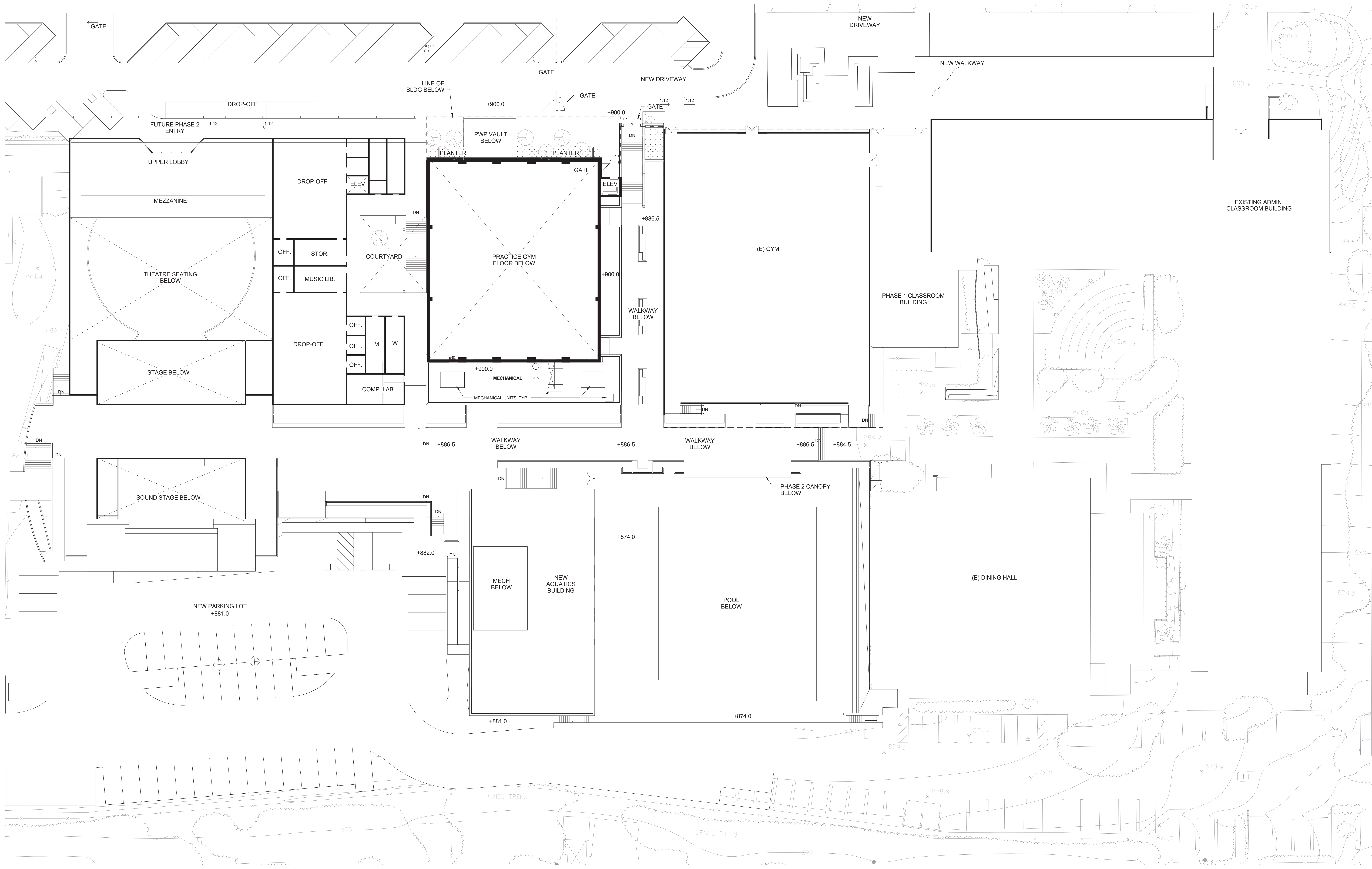
LA SALLE HIGH SCHOOL

CONCEPTUAL GROUND FLOOR PLAN | MP2.2

GONZALEZ GOODALE ARCHITECTS
 WWW.GONZALEZGOODALE.COM

5/6/16

⊗ If this sheet is smaller than 42" high by 30" wide then it has been reduced.



LA SALLE HIGH SCHOOL - CAMPUS MASTER PLAN

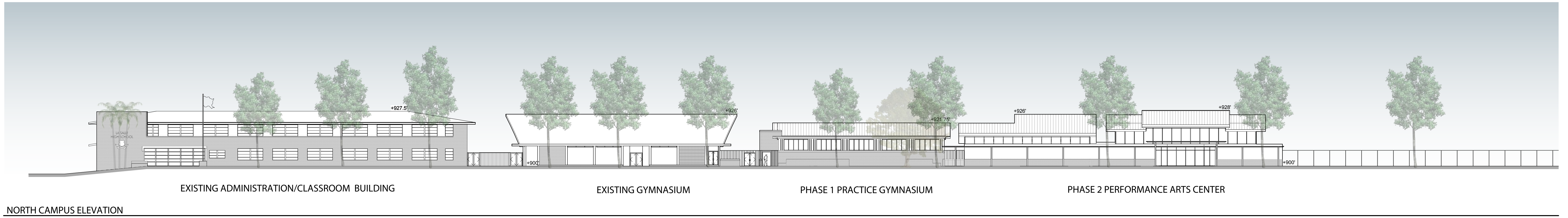
LA SALLE HIGH SCHOOL

CONCEPTUAL UPPER LEVEL PLAN | MP2.3

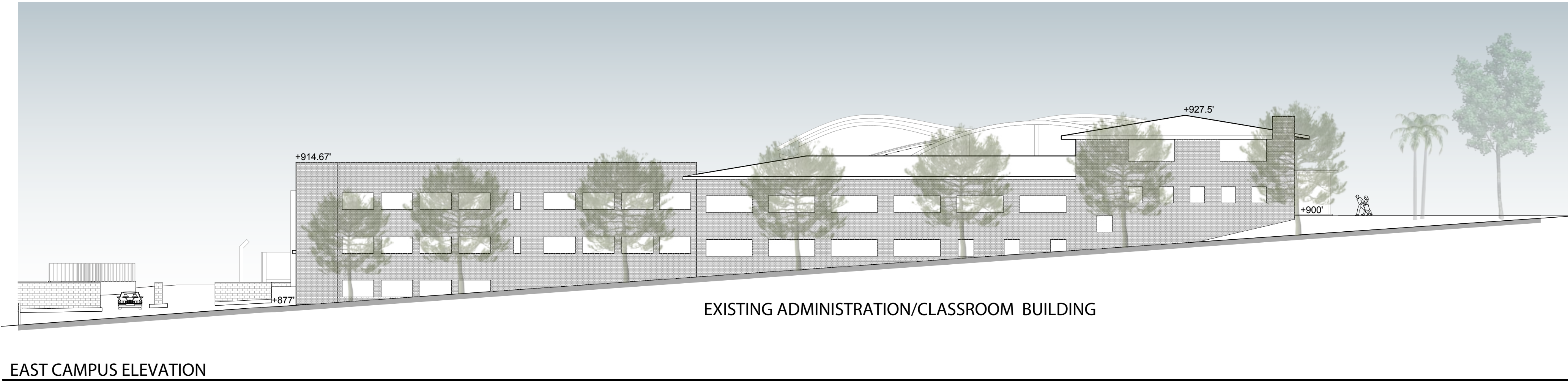
GONZALEZ GOODALE ARCHITECTS
WWW.GONZALEZGOODALE.COM

5/6/16

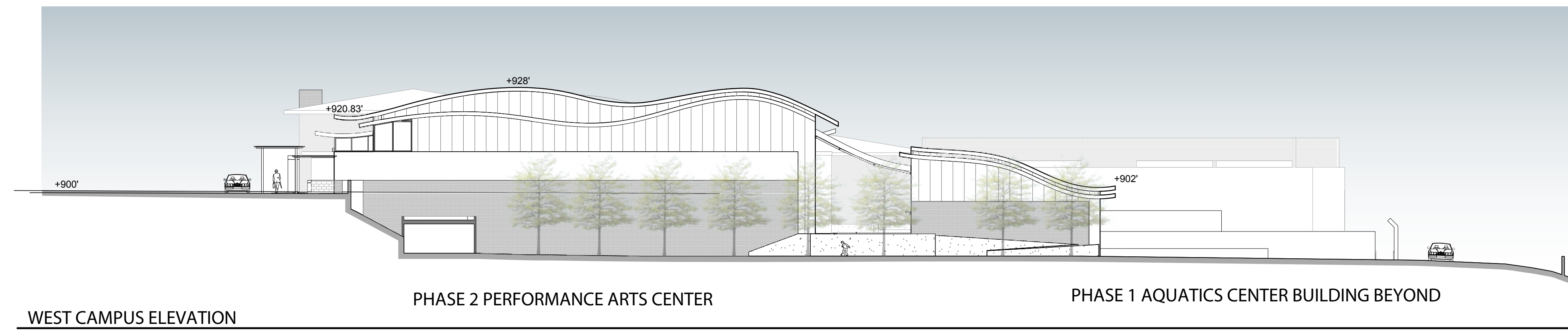
⊕ If this sheet is smaller than 42" high by 30" wide then it has been reduced.



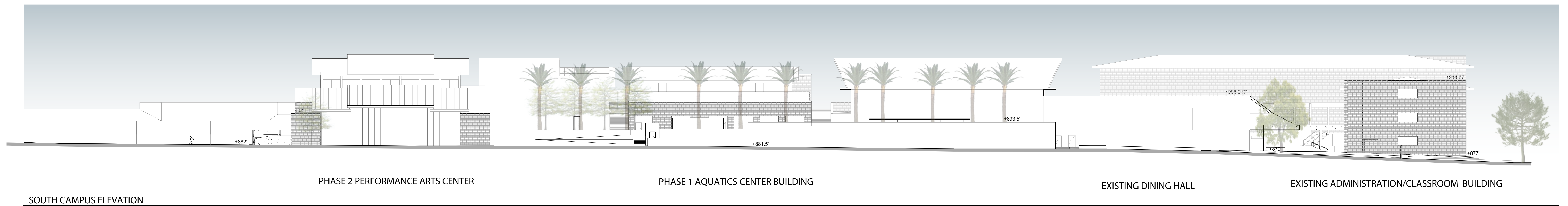
NORTH CAMPUS ELEVATION



EAST CAMPUS ELEVATION



WEST CAMPUS ELEVATION



SOUTH CAMPUS ELEVATION



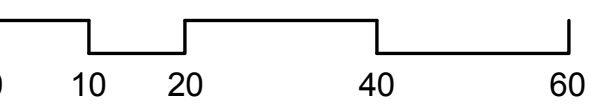
LA SALLE HIGH SCHOOL - CAMPUS MASTER PLAN

LA SALLE HIGH SCHOOL

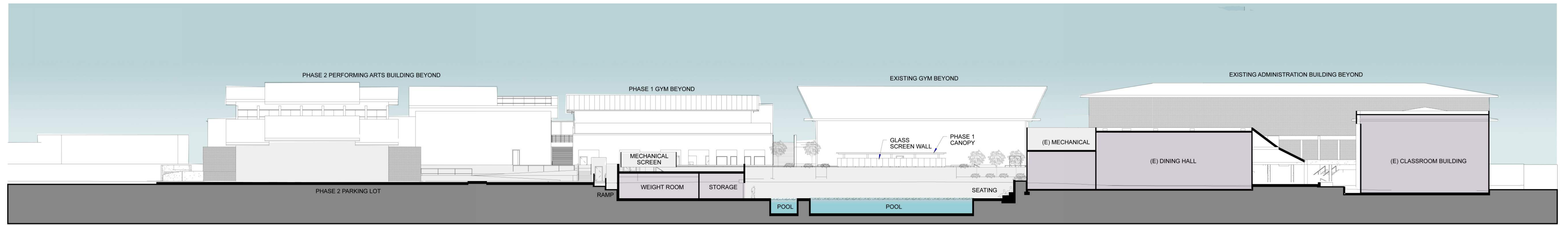
CAMPUS ELEVATIONS | MP3.1

GONZALEZ GOODALE ARCHITECTS
WWW.GONZALEZGOODALE.COM

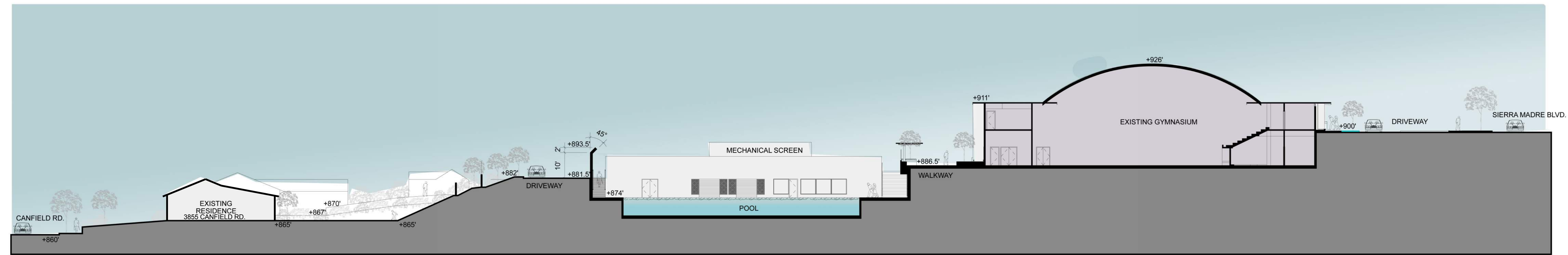
5/6/16



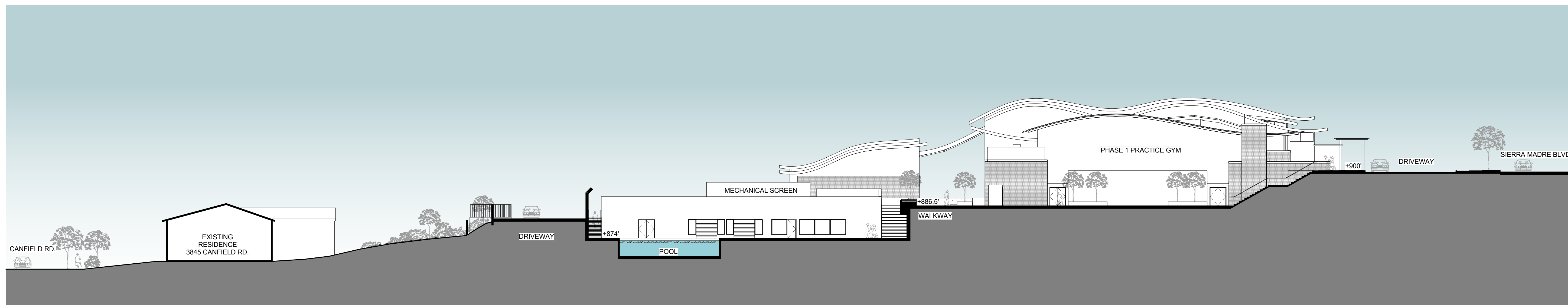
⊞ If this sheet is smaller than 42" high by 30" wide then it has been reduced.



1 EAST-WEST SECTION THROUGH POOL



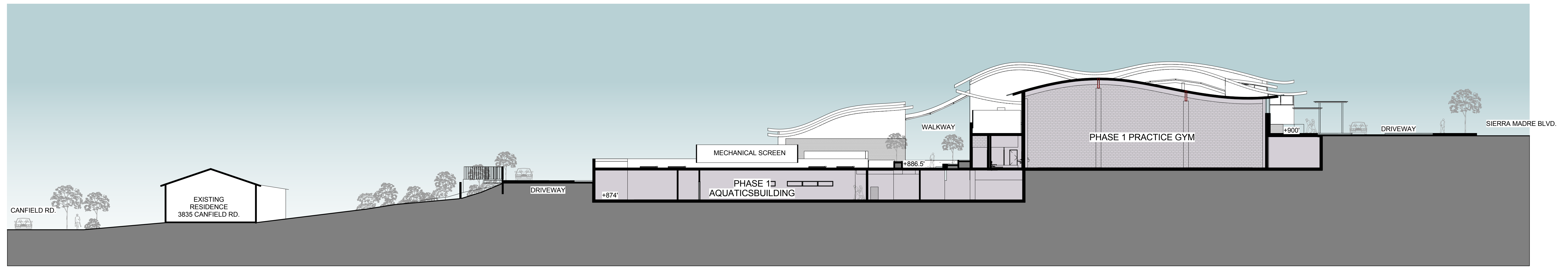
2 NORTH-SOUTH SECTION THROUGH POOL



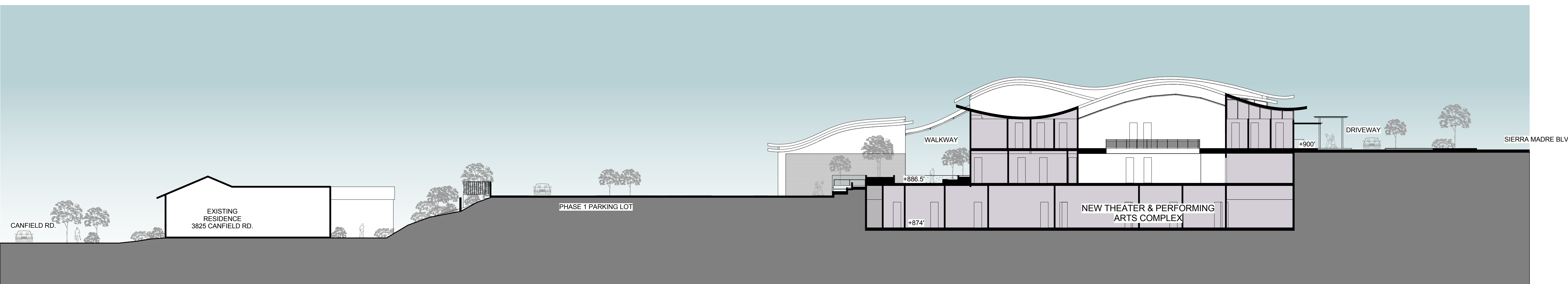
3 NORTH - SOUTH SECTION THROUGH POOL



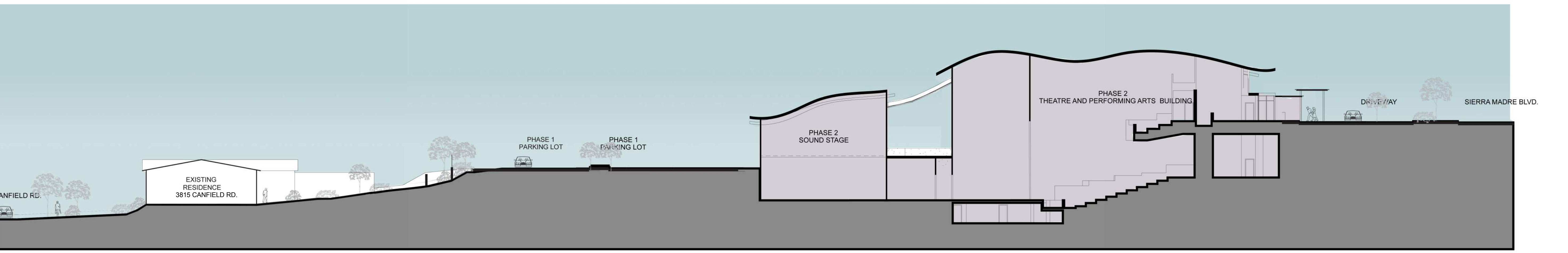
⊕ If this sheet is smaller than 42" high by 30" wide then it has been reduced.



1 NORTH - SOUTH SECTION THROUGH PRACTICE GYM



2 NORTH - SOUTH SECTION THROUGH PERFORMING ARTS BUILDING



3 NORTH-SOUTH SECTION THROUGH PERFORMING ARTS BUILDING



⚠ If this sheet is smaller than 42" high by 30" wide then it has been reduced.



Conceptual Plant Palette

SHRUBS			
Symbol	Botanical Name	Common Name	Character
CAL LIT	Callistemon 'Little John'	'Little John'	3H x 3W Informal Low Hedge Red bristle-like flowers, Year-round
LAV ANG	Lavandula angustifolia	'Munstead'	2H x 2W Informal Low Hedge Lavender flowers, Summer
LOR CHI	Loropetalum chinense	'Burgundy'	3H x 3W Orange/Red Fall Foliage White flowers in Summer
OLE LIL	Olea europaea	'Little Ollie'	6-8H x 6-8W Medium Hedge
PER ATR	Perovskia atriplicifolia	Russian Sage	3H x 3W Finely-textured Leaf Lavender-blue tall spikes of flowers, Summer
ROS FLO	Rosa floribunda	Iceberg Rose	3H x 3W Evergreen Profuse White Roses, Spring to Summer
GROUNDCOVERS			
Symbol	Botanical Name	Common Name	Character
BOU OOL	Bougainvillea	'Oo-la-la'	18'H Green Leaf Magenta flowers, profuse in Summer through Fall
CEA GRI	Ceanothus griseus horizontalis	Yankee Point	2' H Glossy Green Leaf Blue flowers in Spring
FRA CHI	Fragaria chiloensis	Beach Strawberry	4-8'H Red Leaf tones in Winter White flowers in Spring Small fruit in Fall
HUE OPA	Huechera 'Opal'	Opal Coral Bells	1'H Dark Green Leaf White flowers in Spring
HYP CAL	Hypericum calycinum	St. John's Wart	1'H Dark Green Leaf Yellow flowers in Summer
LEY CON	Leymus condensatus	'Canyon Prince'	2-3'H Gray-blue evergreen grass
MAH REP	Mahonia repens	Creeping Mahonia	18-24'H Bluish-green Leaflets Yellow flowers followed by small fruit in Spring
ROS PRO	Rosmarinus officinalis	'Prostratus'	1-2'H Dark Green Needle-like Leaf Blue flowers in Spring Fragrant
VINES SPILLERS			
Symbol	Botanical Name	Common Name	Character
JAS POL	Jasminum polyanthum	Pink Jasmine	Evergreen Bright Rose/White flowers early Spring Fragrant
PAR TRI	Parthenocissus tricuspidata	Boston Ivy	Deciduous Red Foliage in Fall

Tree Legend

TREES			
Symbol	Botanical Name	Common Name	Character
ARB MAR	Arbutus 'Marina'	NCN	12H x 12'W Evergreen Showy Bark
CER FOR	Cercis canadensis	'Forest Pansy'	12H x 12'W Deciduous Burgundy Leaf Bright Pink/Rose flowers early Spring
CUP ARI	Cupressus arizonica	Arizona Cypress	40'H x 20'W Evergreen Gray-green Scale-like Needles
LAG IND	Lagerstromia indica	'Natchez'	12H x 12'W Deciduous Orange/Red Fall Foliage White flowers in Summer
LIQ STY	Liquidambar styraciflua	American Sweetgum	50'H x 20'W Deciduous Colorful Foliage
PHO DAC	Phoenix dactylifera	Date Palm	80'H x 20-40'W Evergreen Gray-green Feather-like Fronds Edible Fruit
PYR KAW	Pyrus kawakamii	Evergreen Pear	15H x 15'W Semi Evergreen Colorful Foliage White flowers, Winter to Early Spring
QUE AGR	Quercus agrifolia	Coast Live Oak	Evergreen

• [R] - TREE REPLACEMENT (SEE TREE ORDINANCE LISTING, AT RIGHT)

Landscape Easement Notes

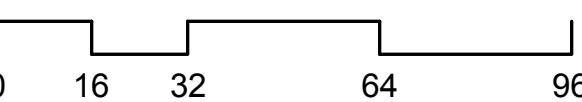
The Landscape Easement to the south will be developed with the input of home owners to provide screening with plant material along the property-line while preserving existing views and site-lines North to the San Gabriel Mountains.

Tree Ordinance | Existing Tree Replacements

EXISTING TREE TO BE REMOVED	SIZES OF REQUIRED REPLACEMENT TREES
1. Tree #1 Queen Palm (22' BTH)	no replacement required
2. Tree #45 Paperbark (7' @ 3')	no replacement required
3. Tree #46 Paperbark (9.5' DBH)	no replacement required
4. Tree #47 Paperbark (6' DBH)	no replacement required
5. Tree #48 Paperbark (8.5' DBH)	no replacement required
6. Tree #49 Paperbark (7.5' DBH)	no replacement required
7. Tree #58 American Sweetgum (19.5" DBH)	2'-24" box
8. Tree #59 American Sweetgum (15.5" DBH)	no replacement required
9. Tree #60 American Sweetgum (16" DBH)	no replacement required
10. Tree #61 American Sweetgum (14" DBH)	no replacement required
11. Tree #66 American Sweetgum (11.4" DBH)	no replacement required
12. Tree #67 American Sweetgum (13.5" DBH)	no replacement required
13. Tree #68 American Sweetgum (18" DBH)	no replacement required
14. Tree #69 American Sweetgum (16.5" DBH)	no replacement required
15. Tree #70 American Sweetgum (17.5" DBH)	no replacement required
16. Tree #71 American Sweetgum (19" DBH)	4'-24" box
SUMMARY:	6'-24" box

komrandonph
landscape architecture
609 east green street
pasadena ca 91101
tel 626.564.0259
fax 626.449.8178

The ideas and designs represented herein and this drawing, all prepared by GONZALEZ GOODALE Architects, are for the use solely with respect to this project and GONZALEZ GOODALE Architects shall retain all common law, statutory and other reserved rights including copyright and they shall not be used by others for any other purpose without written permission of GONZALEZ GOODALE Architects.
client approval



LA SALLE HIGH SCHOOL - CAMPUS MASTER PLAN

LA SALLE HIGH SCHOOL

LANDSCAPE PLAN | MP4.1

GONZALEZ GOODALE ARCHITECTS
WWW.GONZALEZGOODALE.COM

5/6/16



If this sheet is smaller than 42" high by 30" wide then it has been reduced.



Lag. IND | Lagerstromia indica | Natchez

CUP ARI | Cupressus arizonica 'Glauca'

CER FOR | Cercis canadensis | Forest Pansy

ARB MAR | Arbutus Marina

TREES



QUE AGR | Quercus agrifolia

PYR KAW | Pyrus kawakami | Evergreen Pear

PHO DAC | Phoenix dactylifera | Date Palm

LIG STY | Liquidambar styraciflua | American Sweetgum

TREES



ROS FLO | Rosa floribunda | Iceburg Rose

PER AIR | Perovskia atriplicifolia | Russian Sage

OLE LIL | Olea europaea 'Little Ollie' | Dwarf Olive

LOR CHI | Loropetalum chinense | Burgundy

LAV ANG | Lavandula angustifolia English Lavender

CAL VIM | Calistemon viminalis 'Little John' | Bottlebrush

SHRUBS



LEY CON | Leymus condensatus | Canyon Prince

HYP CAL | Hypericum calycinum | St. John's Wort

HEU OPA | Heuchera 'Opal' | Opal Coral bells

FRA CHI | Fragaria chiloensis | Beach Strawberry

CEA GRI | Ceanothus griseus horizontalis | Yankee Point

BOU OOL | Bougainvillea | 'Oon La La'

GROUNDCOVERS



ROS OFF | Rosmarinus officinalis | Prostrate Rosemary

MAH REP | Mahonia repens | Creeping Mahonia

GROUNDCOVERS



PAR TRI | Parthenocissus tricuspidata | Boston Ivy

JAS POL | Jasminum polyanthum | Pink Jasmine

VINES | SPILLERS



LA SALLE HIGH SCHOOL - CAMPUS MASTER PLAN

LA SALLE HIGH SCHOOL

kornrandolph
landscape architecture
659 east green street
pasadena ca 91101
tel 626.564.0259
fax 626.449.8178

LANDSCAPE PLANT IMAGES

MP4.2

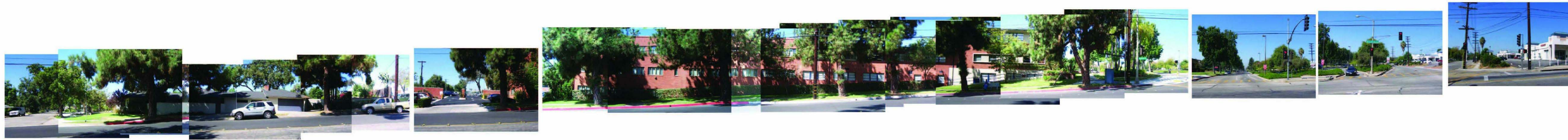
GONZALEZ GOODALE ARCHITECTS
WWW.GONZALEZGOODALE.COM

5/6/16

If this sheet is smaller than 42" high by 30" wide then it has been reduced.



1 SIERRA MADRE BOULEVARD
N.T.S.



2 MICHILLINDA AVENUE
N.T.S.



1 SOUTH ELEVATIONS
N.T.S.



1 CANFIELD ROAD
N.T.S.



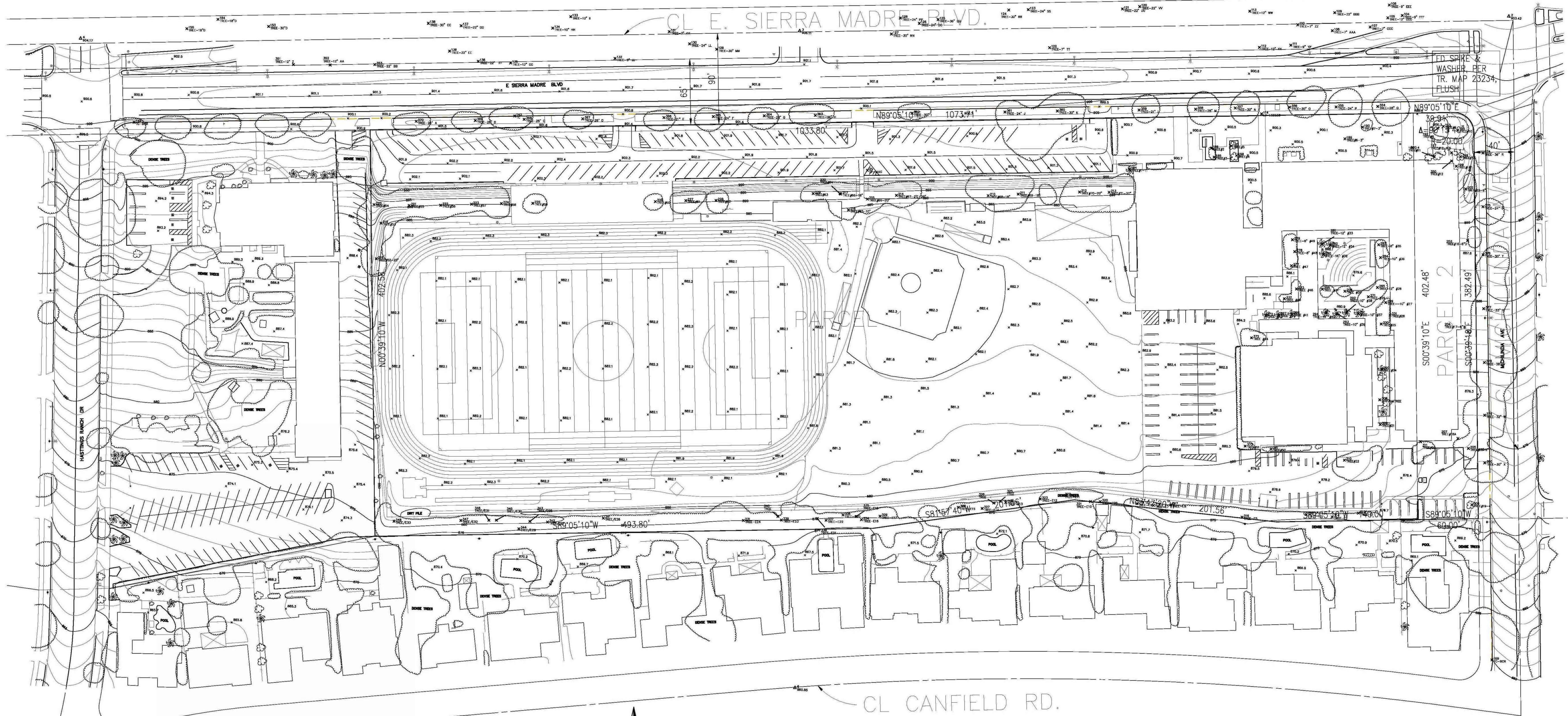
If this sheet is smaller than 42" high by 30" wide then it has been reduced.

TOPO MAP

CITY OF PASADENA

COUNTY OF LOS ANGELES, STATE OF CALIFORNIA

LEGEND		
● UTILITY POLE	■ SIGNAL PULLBOX	SW BACK OF WALK
⊙ SEWER MANHOLE	■ CABLE TV PULLBOX	TW TOP OF WALL
⊙ STORM DRAIN MANHOLE	■ TELEPHONE PULLBOX	AC ASPHALT PAVEMENT
⊙ TELEPHONE MANHOLE	■ COMMUNICATIONS PULLBOX	875 EXISTING ELEVATION
⊙ UNKNOWN MANHOLE	■ STREET LIGHT PULLBOX	— CENTERLINE
⊙ FIRE HYDRANT	■ UNKNOWN PULLBOX	— SLOPE
⊙ FLOOD LIGHT	⊙ FIRE DEPT CONNECTION	□ CATCH BASIN
⊙ HOSE BIB	— IRON FENCE	□ CONCRETE
⊙ SEWER CLEANOUT	— CHAIN LINK FENCE	□ IRRIGATION VALVE
⊙ WATER VALVE	— WOOD FENCE	□ POLE
⊙ GAS VALVE	— BLOCK WALL	— CENTERLINE
⊙ WATER METER	— TREE	— PROPERTY LINE
⊙ GAS METER	— PALM	— FLOW LINE
⊙ WATER VAULT	— BUSH	— UTILITY MARKER
⊙ GAS VAULT	— TRASH ENCLOSURE	— GRATE
⊙ TELEPHONE VAULT	— TR	— GRATE/HANDICAP
⊙ ELECTRIC VAULT	— EP	⊙ FIRE SPRINKLER RISER
— STREET LIGHT	— FS	⊙ SURVEY MONUMENT
— TRAFFIC SIGNAL	— FF	⊙ SIGN POST
⊙ GAS RISER	— NC	⊙ TOP OF BERM
— GUY WIRE	— TC	⊙ INVERT
— CAR STOP	— FL	⊙ AERIAL TARGET
— LIGHT POLE	— TG	⊙ RETAINING WALL
	— GB	

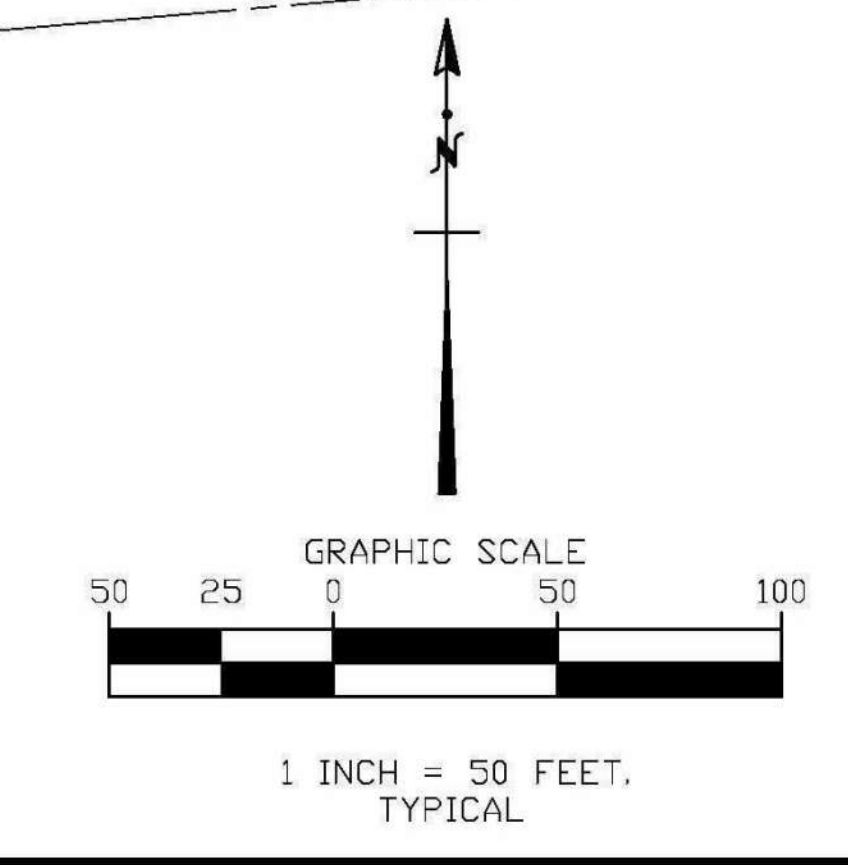


BASIS OF BEARING
 THE BEARING OF MICHELLINDA AVENUE (S0°39'10"E) AS SHOWN ON MAP OF TRACT 16060, RECORDED IN BOOK 355 PAGES 18 AND 19 OF MAPS WAS USED AS BASIS OF BEARINGS FOR THIS MAP.

AREA
 435,255 S.F. ~ 10.0 ACRES

SURVEY INFORMATION
 MAPPED TOPOGRAPHY UTILIZED AERIAL PHOTOGRAMMETRY
 AERIAL FLOWN: AUGUST 19, 2011

BENCH MARK
 BM NUMBER: G 4183
 ELEV: 907.58 (NAVD 2005)
 CSM MON IN S END C. B. 5.5M(18FT) N/O BCR @ NE COR SIERRA MADRE BLVD & MICHELLINDA AVE MKD (BM 25-38 1975)



PREPARED BY:

C&V CONSULTING, INC.
 CIVIL ENGINEERING
 LAND PLANNING & SURVEYING
 27156 BURBANK
 FOOTHILL RANCH, CA 92610
 T. 949.916.3800
 F. 949.916.3805
 CVC-INC.NET

THESE PLANS WERE PREPARED UNDER THE SUPERVISION OF:

DATE	REGISTERED CIVIL ENGINEER NO.			
REVISIONS				
DATE	DESCRIPTION	APPROVED	INITIAL	DATE

INITIAL	DATE
DRAWN RCA	09/22/2011
DESIGNED	
CHECKED DM	09/22/2011

UTILITY CLR.	
STREET	
SEWER	
DRAINAGE	
WATER	
TRAFFIC	
R/W	
AS CONST.	

CITY OF PASADENA OFFICE OF THE CITY ENGINEER			
LA SALLE HIGH SCHOOL — PASADENA TOPOGRAPHIC MAP			
APPROVED:		APPROVED:	
DATE	ASSISTANT CITY ENGINEER	DATE	DIRECTOR OF ENGINEERING
SCALE: 1	F.B.	PG.	SHEET 1 of 1 SHEETS
B.M.:			FILE:

⚠ If this sheet is smaller than 42" high by 30" wide then it has been reduced.

PROJECT: 103330 LA SALLE HIGH SCHOOL MASTER PLAN TOPOGRAPHIC MAPS V1-03-201103101103 E2-1000.dwg BY: smm11 - Sep 24, 2015 10:36:47am

TITLE REPORT

FIRST AMERICAN TITLE COMPANY
 2 FIRST AMERICAN WAY, SANTA ANA, CA 92707
 ORDER NO: O-SA-3788811 DATED: JULY 20, 2011

LAND DESCRIPTION:

REAL PROPERTY IN THE CITY OF PASADENA, COUNTY OF LOS ANGELES, STATE OF CALIFORNIA, DESCRIBED AS FOLLOWS:

PARCEL 1:

THAT PORTION OF THE RANCHO SANTA ANITA, IN THE CITY OF PASADENA, BOUNDED AS FOLLOWS:

BEGINNING AT A POINT IN THE SOUTHERLY LINE OF EASEMENT GRANTED TO THE SAID COUNTY FOR ROAD PURPOSES AND RECORDED IN BOOK 11138 PAGE 244, OFFICIAL RECORDS OF SAID COUNTY, SAID EASEMENT NOW KNOWN AS SIERRA MADRE BOULEVARD, 65 FEET IN WIDTH, AT SAID POINT OF BEGINNING, WHICH POINT OF BEGINNING IS 100 FEET WESTERLY FROM THE INTERSECTION OF SAID SOUTHERLY LINE, OR THE PROLONGATION THEREOF WITH THE LINE SHOWN AS "PROPOSED CENTER LINE" OF MICHILLINDA AVENUE, FORMERLY SIERRA MADRE AVENUE, AS DESIGNATED ON MAP FILED IN THE COUNTY SURVEYOR'S OFFICE OF SAID COUNTY, AS C.S. B-523, SHEET 2; THENCE ALONG A LINE PARALLEL WITH THE SAID CENTERLINE OF MICHILLINDA AVENUE, SOUTH 0°39'10" EAST 402.48 FEET; THENCE ALONG A LINE PARALLEL TO SAID SOUTHERLY LINE OF SIERRA MADRE BOULEVARD, SOUTH 89°05'10" WEST 140 FEET; THENCE NORTH 83°47'20" WEST 201.56 FEET; THENCE SOUTH 81°57'40" WEST 201.56 FEET TO A POINT IN A LINE WHICH IS 402.58 FEET SOUTHERLY FROM AND PARALLEL WITH SAID SOUTHERLY LINE OF SIERRA MADRE BOULEVARD, SAID DISTANCE OF 402.58 FEET BEING MEASURED ALONG A LINE PARALLEL TO SAID MICHILLINDA AVENUE; THENCE ALONG SAID LAST NAMED LINE SOUTH 89°05'10" WEST 493.80 FEET TO A POINT WHICH IS 1133.80 FEET FROM SAID PROPOSED CENTERLINE OF MICHILLINDA AVENUE, SAID DISTANCE OF 1133.80 FEET BEING MEASURED ALONG A LINE PARALLEL TO SAID SOUTHERLY LINE OF SIERRA MADRE BOULEVARD; THENCE ALONG A LINE PARALLEL TO SAID LINE OF MICHILLINDA AVENUE, NORTH 0°39'10" WEST 402.58 FEET TO SAID SOUTHERLY LINE OF SIERRA MADRE BOULEVARD; THENCE ALONG SAID SOUTHERLY LINE, NORTH 89°05'10" EAST 1033.80 FEET TO THE POINT OF BEGINNING.

PARCEL 2:

THAT PORTION OF THE RANCHO SANTA ANITA, PARTLY IN THE CITY OF PASADENA, AND PARTLY IN THE CITY OF SIERRA MADRE, BOUNDED AS FOLLOWS:

BEGINNING AT A POINT IN THE SOUTHERLY LINE OF THE EASEMENT GRANTED TO SAID COUNTY FOR ROAD PURPOSES AND RECORDED IN BOOK 11138 PAGE 244 OF OFFICIAL RECORDS OF SAID COUNTY, SAID EASEMENT NOW KNOWN AS SIERRA MADRE BOULEVARD, 65 FEET IN WIDTH AT SAID POINT OF BEGINNING, WHICH POINT OF BEGINNING IS 100 FEET WESTERLY FROM THE INTERSECTION OF SAID SOUTHERLY LINE, OR THE PROLONGATION THEREOF, WITH THE LINE SHOWN AS PROPOSED CENTERLINE OF MICHILLINDA AVENUE, FORMERLY SIERRA MADRE AVENUE, AS DESIGNATED ON MAP FILED IN THE COUNTY SURVEYOR'S OFFICE OF SAID COUNTY, AS C.S. B-523, SHEET 2; THENCE ALONG A LINE PARALLEL WITH SAID CENTERLINE OF MICHILLINDA AVENUE, SOUTH 0°39'10" EAST 402.58 FEET; THENCE EASTERLY PARALLEL WITH SAID SOUTHERLY LINE OF SIERRA MADRE BOULEVARD, 100 FEET, MORE OR LESS, TO SAID CENTERLINE OF MICHILLINDA AVENUE; THENCE ALONG SAID CENTERLINE NORTH 0°39'10" WEST 402.58 FEET MORE OR LESS, TO SAID PROLONGATION OF THE SOUTHERLY LINE OF SIERRA MADRE BOULEVARD; THENCE WESTERLY ALONG SAID PROLONGATION AND SAID SOUTHERLY LINE 100 FEET TO THE POINT OF BEGINNING.

EXCEPT THAT PORTION OF SAID PARCEL DESCRIBED AS FOLLOWS:

BEGINNING AT THE NORTHEASTERLY CORNER OF LOT 20 OF TRACT 16060, AS PER MAP RECORDED IN BOOK 355 PAGE 18 OF MAPS, IN THE OFFICE OF THE COUNTY RECORDER OF SAID COUNTY, SAID CORNER BEING ALSO IN THE SOUTHERLY LINE OF THE LAND DESCRIBED IN DEED TO THE ROMAN CATHOLIC ARCHBISHOP OF LOS ANGELES, RECORDED IN BOOK 30233 PAGE 173, OFFICIAL RECORDS; THENCE NORTHERLY ALONG THE PROLONGATION OF THE EASTERLY LINE OF SAID LOT 20, A DISTANCE 382.49 FEET TO THE BEGINNING OF A TANGENT CURVE CONCAVE TO THE SOUTH-WEST AND HAVING A RADIUS OF 20 FEET, WHICH CURVE IS ALSO TANGENT TO THE NORTHERLY LINE OF THE LAND DESCRIBED IN SAID DEED RECORDED IN BOOK 30233 PAGE 173, OFFICIAL RECORDS; THENCE NORTH-WESTERLY ALONG SAID CURVE 31.51 FEET TO THE NORTHERLY LINE OF THE LAND DESCRIBED IN SAID DEED, SAID NORTHERLY LINE ALSO BEING COINCIDENT WITH THE SOUTHERLY LINE OF AN EASEMENT FOR ROAD PURPOSES AS GRANTED TO COUNTY OF LOS ANGELES AND RECORDED IN BOOK 11138 PAGE 244, OFFICIAL RECORDS, SAID EASEMENT BEING KNOWN AS SIERRA MADRE BOULEVARD; THENCE EASTERLY ALONG THE NORTHERLY LINE OF THE LAND DESCRIBED IN SAID DEED AS RECORDED IN BOOK 30233 PAGE 173, OFFICIAL RECORDS, 40.09 FEET TO THE BOUNDARY LINE OF CITY OF PASADENA AS PER ANNEXATION OF FEBRUARY 28, 1946, DESIGNATED AS HEATING ANNEX NO. 1; THENCE SOUTHERLY ALONG SAID BOUNDARY LINE 402.58 FEET TO THE AFORESAID SOUTHERLY LINE OF THE LAND DESCRIBED IN DEED AS RECORDED IN BOOK 30233 PAGE 173 OFFICIAL RECORDS; THENCE WESTERLY ALONG SAID SOUTHERLY LINE 20 FEET TO THE POINT OF BEGINNING.

ALSO EXCEPT THEREFROM ANY PORTION OF SAID LAND THAT MAY BE WITHIN THE LINES OF PUBLIC ROADS.

APN: 5757-001-026

AREA

435,256 S.F. ~ 10.0 ACRES

SURVEY INFORMATION

MAPPED TOPOGRAPHY UTILIZED AERIAL PHOTOGRAMMETRY

AERIAL FLOWN: AUGUST 19, 2011

BASIS OF BEARING

THE BEARING OF MICHILLINDA AVENUE (S0°39'10"E) AS SHOWN ON MAP OF TRACT 16060, RECORDED IN BOOK 355 PAGES 18 AND 19 OF MAPS WAS USED AS BASIS OF BEARINGS FOR THIS MAP.

BENCH MARK

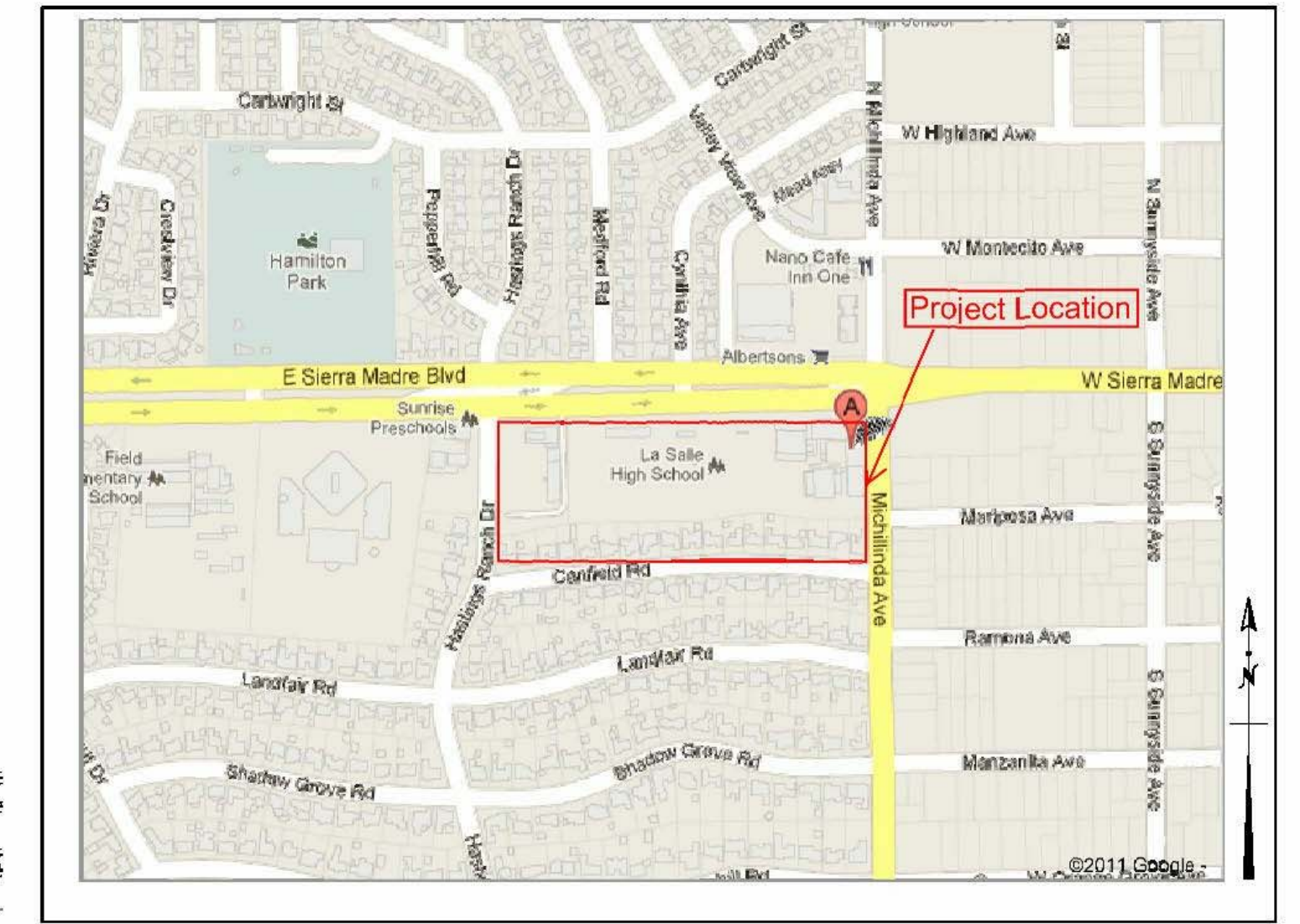
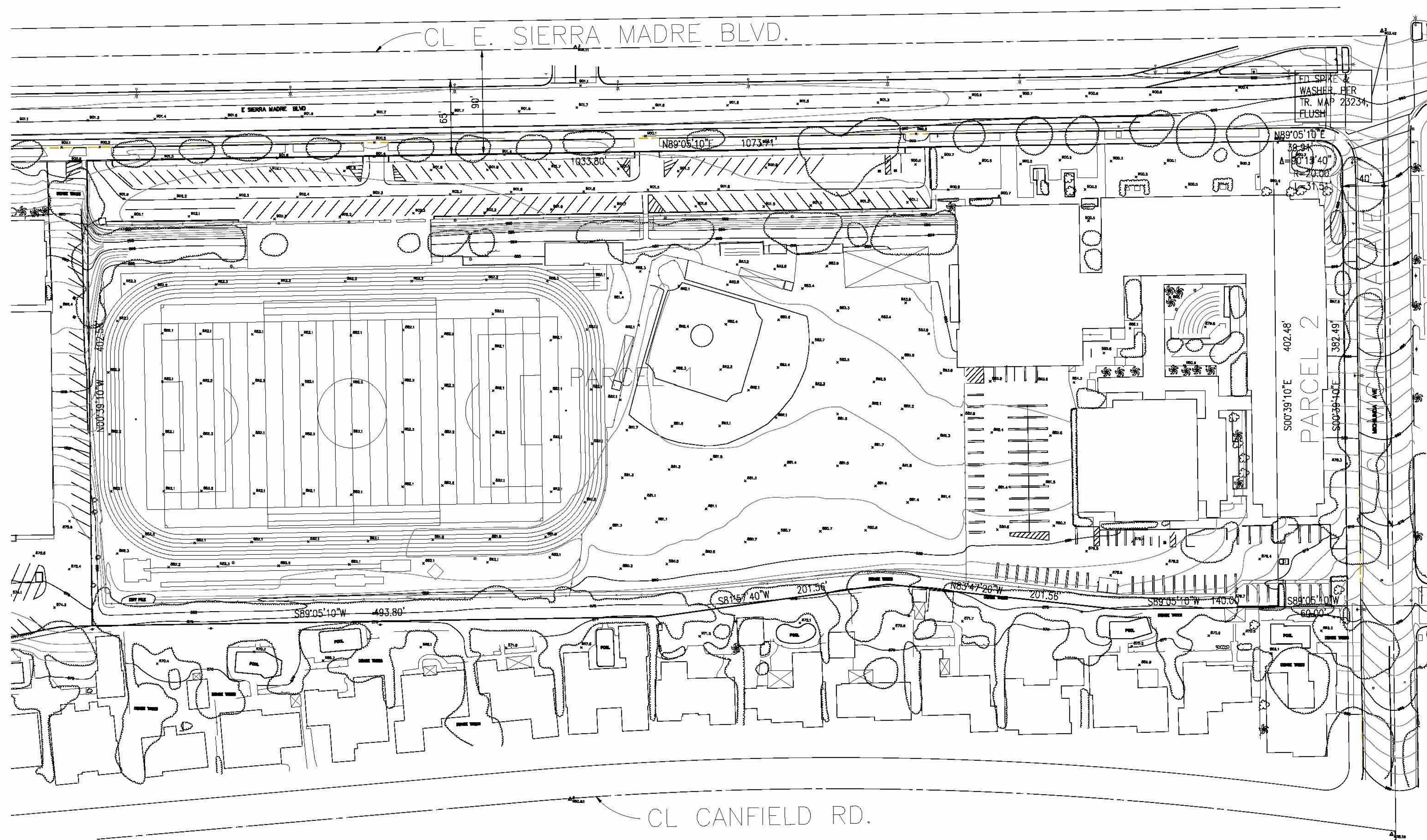
BM NUMBER: G 4183
 ELEV: 907.58 (NAVD 2005)

CS3M MON IN S END C. B. 5.5M(18F) N/D BCR @ NE COR SIERRA MADRE BLVD & MICHILLINDA AVE MKD (BM 25-3B 1975)

ENCUMBRANCE MAP

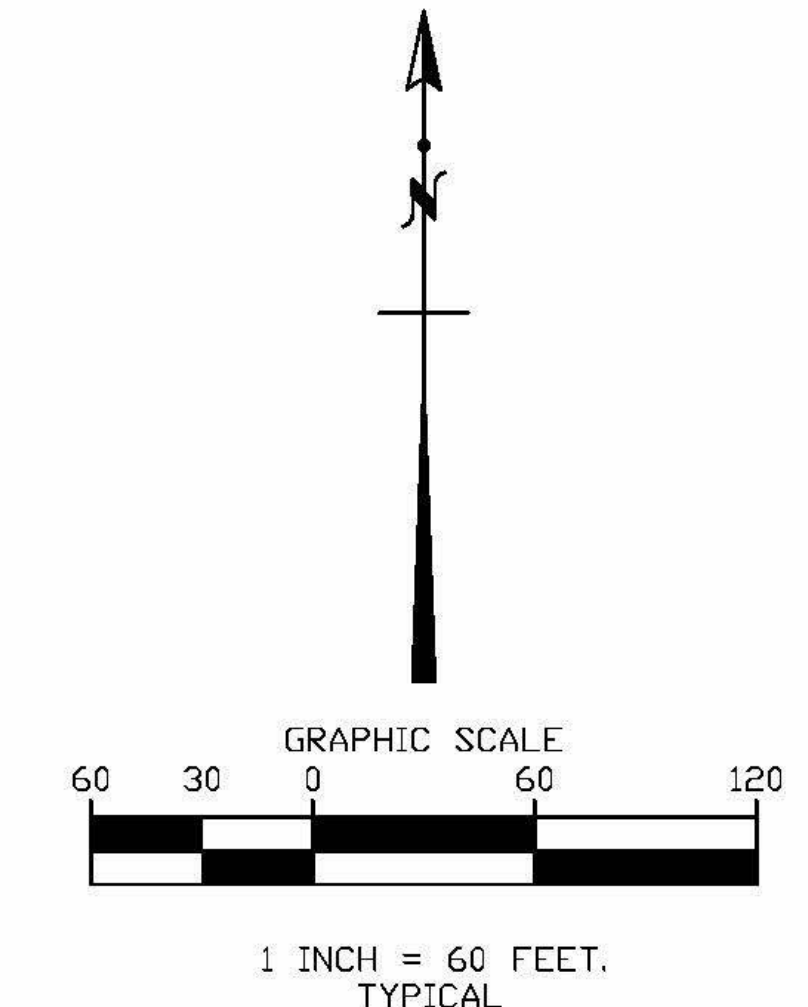
CITY OF PASADENA

COUNTY OF LOS ANGELES, STATE OF CALIFORNIA



VICINITY MAP

LEGEND		
● UTILITY POLE	■ SIGNAL PULLBOX	BW BACK OF WALK
● SEWER MANHOLE	■ CABLE TV PULLBOX	TW TOP OF WALL
● STORM DRAIN MANHOLE	■ TELEPHONE PULLBOX	AC ASPHALT PAVEMENT
● TELEPHONE MANHOLE	■ COMMUNICATIONS PULLBOX	875 EXISTING ELEVATION
● UNKNOWN MANHOLE	■ STREET LIGHT PULLBOX	— CENTERLINE
● FIRE HYDRANT	■ UNKNOWN PULLBOX	□ SLOPE
● FLOOD LIGHT	■ FIRE DEPT CONNECTION	□ CATCH BASIN
● HOSE BIB	■ IRON FENCE	□ CONCRETE
● SEWER CLEANOUT	■ CHAIN LINK FENCE	□ IRRIGATION VALVE
● WATER VALVE	■ WOOD FENCE	○ POLE
● GAS VALVE	■ BLOCK WALL	— CENTERLINE
● WATER METER	■ TREE	— PROPERTY LINE
● GAS METER	■ PALM	— FLOW LINE
● WATER VAULT	■ BUSH	— UTILITY MARKER
● GAS VAULT	■ TRASH ENCLOSURE	— GRATE
● TELEPHONE VAULT	■ ELECTRICAL TRANSFORMER	— HANDICAP
● ELECTRIC VAULT	■ EP EDGES OF PAVEMENT	● FIRE SPRINKLER RISER
● STREET LIGHT	■ FS FINISHED SURFACE	● SURVEY MONUMENT
● TRAFFIC SIGNAL	■ FF FINISHED FLOOR	● SIGN POST
● GAS RISER	■ NG NATURAL GROUND	● TOP OF BERM
● CUY WIRE	■ TC TOP OF CURB	● INVERT
● CAR STOP	■ FL FLOW LINE	● AERIAL TARGET
● LIGHT POLE	■ TG TOP OF GRATE	● RETAINING WALL
	■ GB GRADE BREAK	



	PREPARED BY: 27156 BURBANK Foothill Ranch, CA 92610 T. 949.916.3800 F. 949.916.3805 CVC-INC.NET	THESE PLANS WERE PREPARED UNDER THE SUPERVISION OF: DATE: _____ REGISTERED CIVIL ENGINEER NO. _____ REVISIONS <table border="1" style="width: 100%;"> <thead> <tr> <th>DATE</th> <th>DESCRIPTION</th> <th>APPROVED</th> <th>INITIAL</th> <th>DATE</th> </tr> </thead> <tbody> <tr> <td> </td> <td> </td> <td> </td> <td> </td> <td> </td> </tr> <tr> <td> </td> <td> </td> <td> </td> <td> </td> <td> </td> </tr> <tr> <td> </td> <td> </td> <td> </td> <td> </td> <td> </td> </tr> <tr> <td> </td> <td> </td> <td> </td> <td> </td> <td> </td> </tr> </tbody> </table>	DATE	DESCRIPTION	APPROVED	INITIAL	DATE																					<table border="1" style="width: 100%;"> <tr> <td>DRAWN</td> <td>INITIAL</td> <td>DATE</td> </tr> <tr> <td>RCA</td> <td></td> <td>09/22/2011</td> </tr> <tr> <td>DESIGNED</td> <td></td> <td></td> </tr> <tr> <td>CHECKED</td> <td>DM</td> <td>09/22/2011</td> </tr> </table>	DRAWN	INITIAL	DATE	RCA		09/22/2011	DESIGNED			CHECKED	DM	09/22/2011	CITY OF PASADENA OFFICE OF THE CITY ENGINEER LA SALLE HIGH SCHOOL - PASADENA ENCUMBRANCE MAP APPROVED: _____ DATE: _____ ASSISTANT CITY ENGINEER APPROVED: _____ DATE: _____ DIRECTOR OF ENGINEERING SCALE: 1 F.B. PG. SHEET 1 of 1 SHEETS B.M.: _____ FILE: _____
	DATE	DESCRIPTION	APPROVED	INITIAL	DATE																																				
DRAWN	INITIAL	DATE																																							
RCA		09/22/2011																																							
DESIGNED																																									
CHECKED	DM	09/22/2011																																							
				UTILITY CLR. _____ STREET _____ SEWER _____ DRAINAGE _____ WATER _____ TRAFFIC _____ R/W _____ AS CONST. _____																																					

Ⓜ If this sheet is smaller than 42" high by 30" wide then it has been reduced.