



1



2



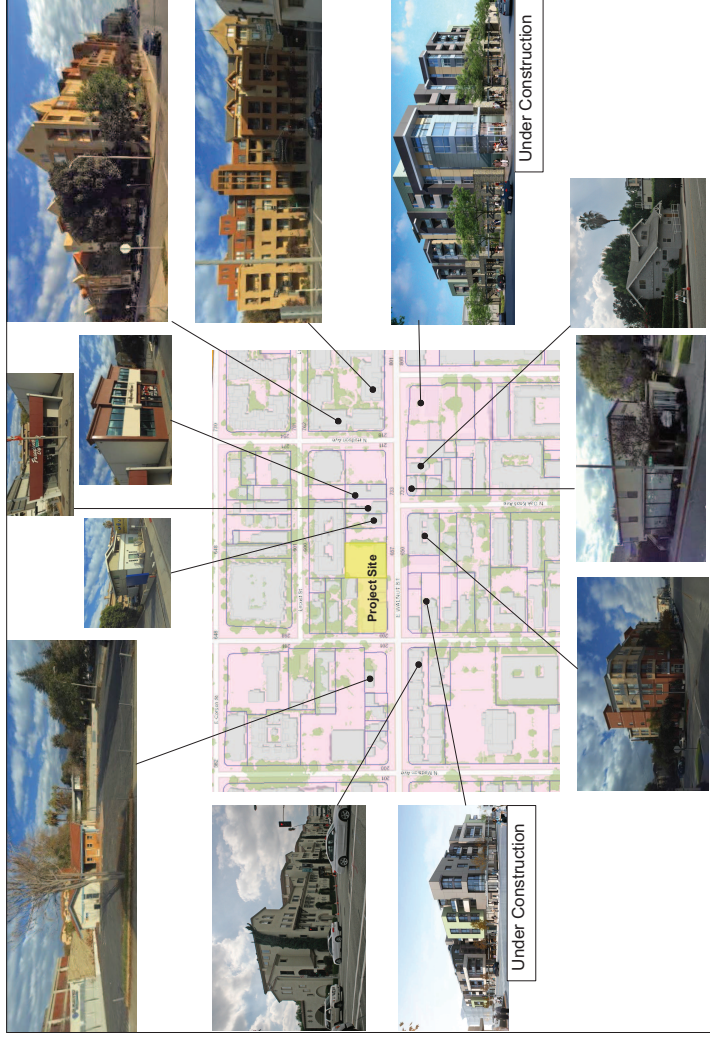
3



4



5



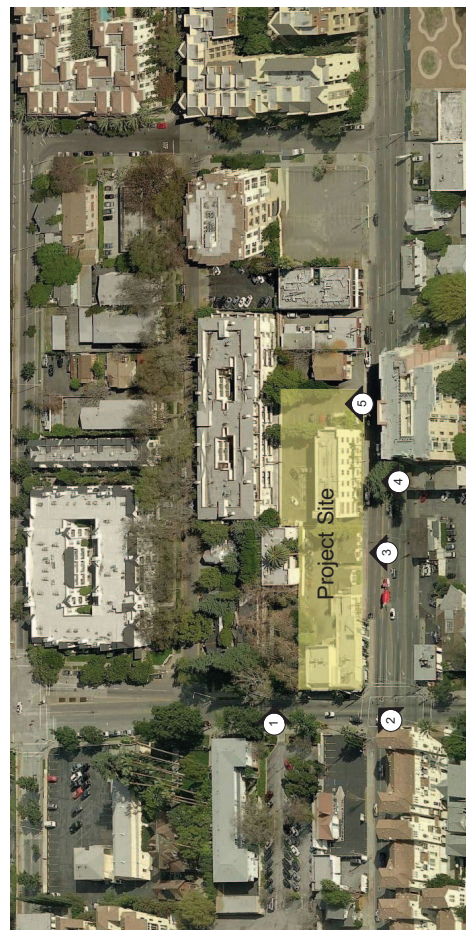
Under Construction

Under Construction

Site Context



Project Site.



Site Photos

Aerial Site Plan



Architect of Record	
Project Name	711 East Walnut St., Pasadena
Client	DC Walnut Holdings LLC
Address	711 East Walnut St., Pasadena

New Mixed Use Project for
DC Walnut Holdings LLC
711 East Walnut St., Pasadena

Use of Architect's Drawings	
Scale	1/8" = 1'-0"
Date	10/15/2024
Drawn By	Architect
Checked By	Architect
Project No.	2024-001
Sheet No.	1 of 1

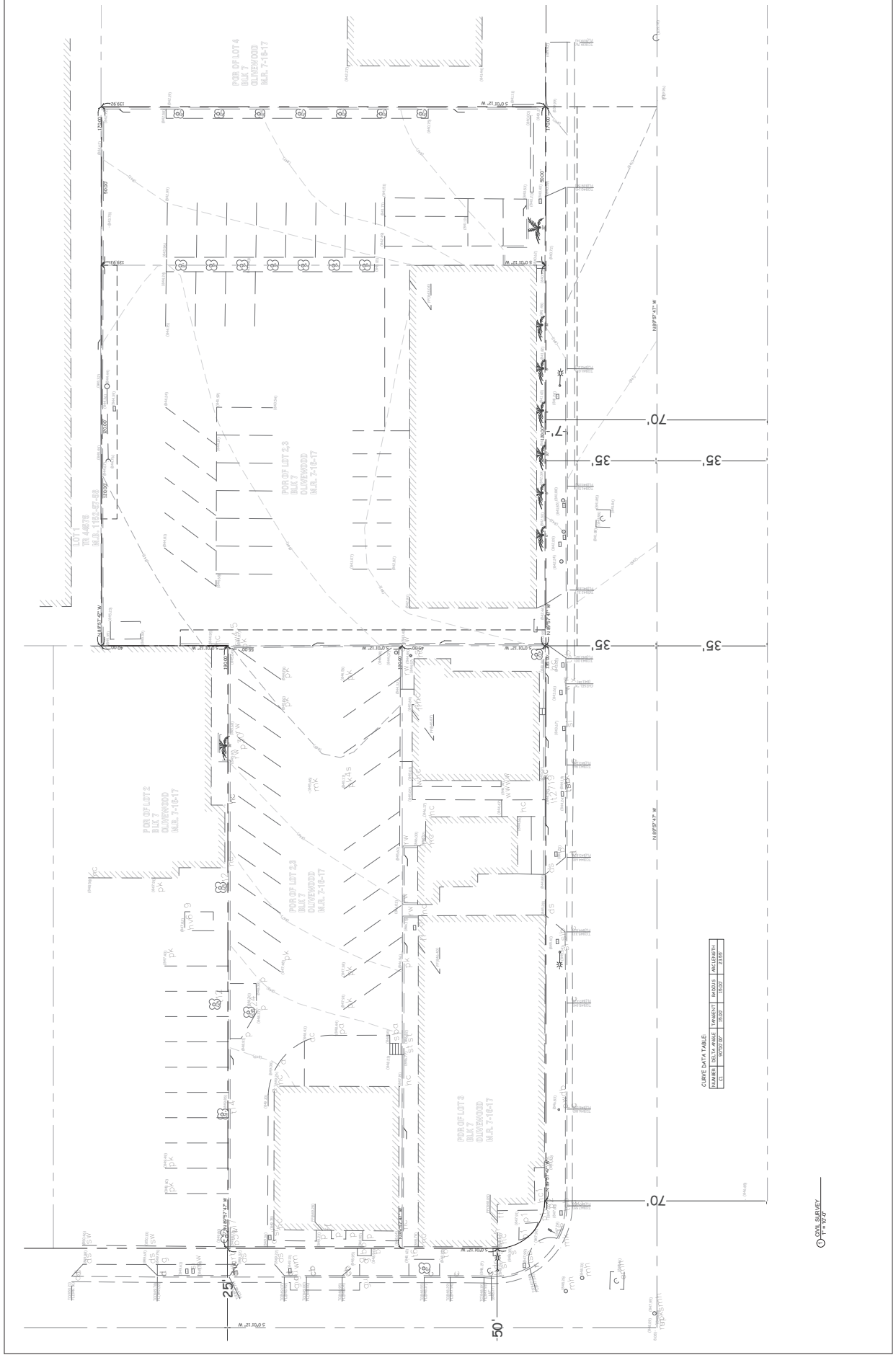


DATE: 08/11/2011
 TIME: 10:00 AM
 PROJECT: 711 WALNUT

711 WALNUT HOLDINGS LLC

Use of Architect's Drawings
 THESE DRAWINGS ARE THE PROPERTY OF TCA. THEY ARE TO BE USED ONLY FOR THE PROJECT AND SITE SPECIFICALLY IDENTIFIED HEREON. ANY REUSE, REPRODUCTION, OR MODIFICATION OF THESE DRAWINGS WITHOUT THE WRITTEN CONSENT OF TCA IS STRICTLY PROHIBITED. THE USER OF THESE DRAWINGS SHALL BE RESPONSIBLE FOR OBTAINING ALL NECESSARY PERMITS AND APPROVALS FROM THE APPROPRIATE AGENCIES. TCA SHALL NOT BE RESPONSIBLE FOR ANY ERRORS, OMISSIONS, OR INADEQUACIES IN THESE DRAWINGS, NOR FOR ANY CONSEQUENCES ARISING FROM THEIR USE.

PROJECT NO.	15-11
DATE	08/11/2011
DESIGNER	DAVID L. JOHNSON
CHECKER	DAVID L. JOHNSON
SCALE	AS SHOWN
TITLE	CONCRETE SURVEY



CONCRETE SURVEY TABLE

NO.	COORDINATE	EASTING	NORTHING	MARKER	ACCURACY
1	10000.00	1000.00	1000.00	1000	1:1000
2	10000.00	1000.00	1000.00	1000	1:1000

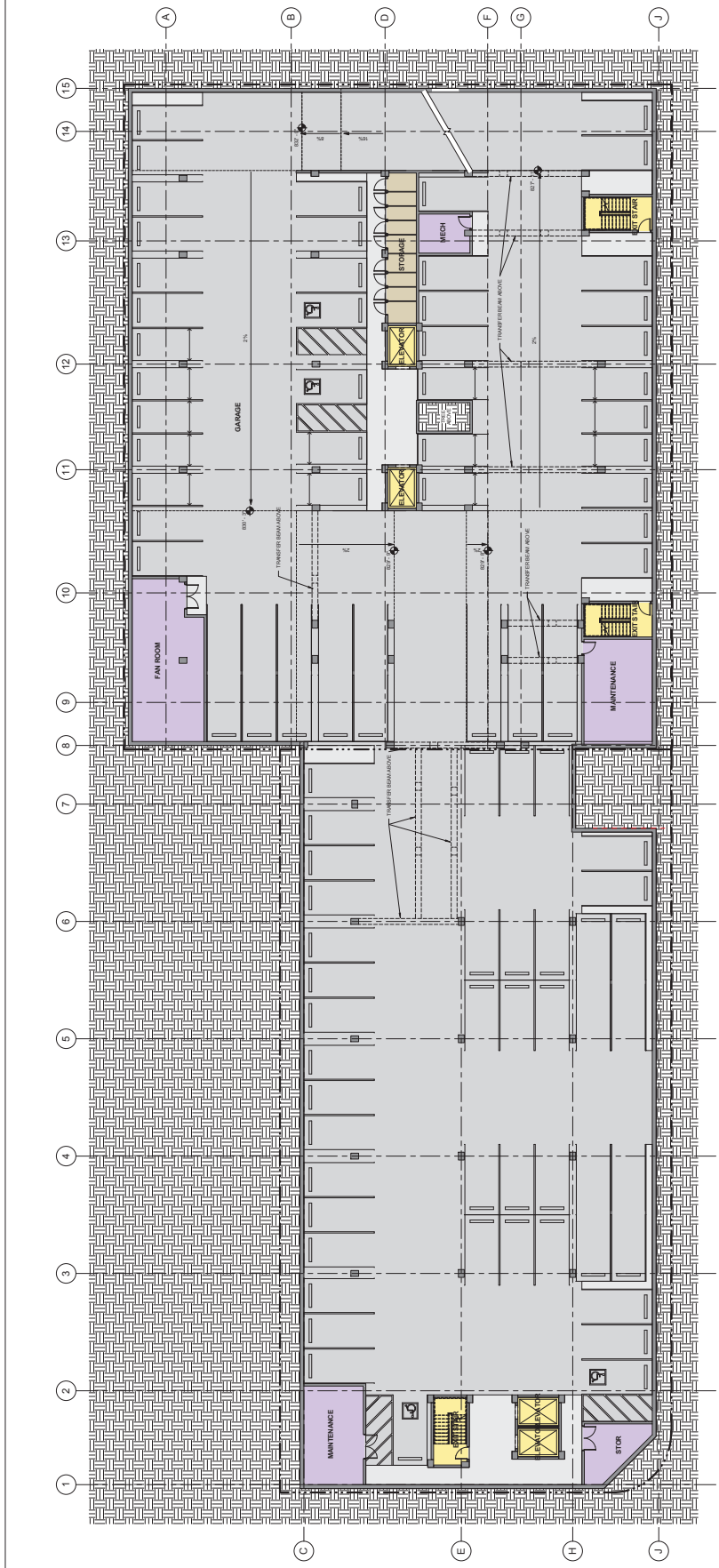
CONCRETE SURVEY

NO.	REVISION	DATE	BY	CHKD.

Use of Architect's Drawings
 These drawings are to be used only for the project and site specifically identified herein. They are not to be used for any other project or site without the written consent of the Architect. The Architect shall not be responsible for any errors or omissions in these drawings or for any consequences arising from their use. The user of these drawings shall be deemed to have accepted the drawings as shown and to have released the Architect from all liability for any such errors or omissions. The user of these drawings shall be deemed to have accepted the drawings as shown and to have released the Architect from all liability for any such errors or omissions. The user of these drawings shall be deemed to have accepted the drawings as shown and to have released the Architect from all liability for any such errors or omissions.

NO.	REVISION	DATE	BY	CHKD.

NO.	REVISION	DATE	BY	CHKD.



Basement 1
 1/8" = 1'-0"

Use of Architect's Drawings	Type	Quantity
Basement 1	1	1
Basement 2	1	1
Basement 3	1	1
Basement 4	1	1
Basement 5	1	1
Basement 6	1	1
Basement 7	1	1
Basement 8	1	1
Basement 9	1	1
Basement 10	1	1
Basement 11	1	1
Basement 12	1	1
Basement 13	1	1
Basement 14	1	1
Basement 15	1	1
Basement 16	1	1
Basement 17	1	1
Basement 18	1	1
Basement 19	1	1
Basement 20	1	1

Basement 1	Quantity
Basement 1	1
Basement 2	1
Basement 3	1
Basement 4	1
Basement 5	1
Basement 6	1
Basement 7	1
Basement 8	1
Basement 9	1
Basement 10	1
Basement 11	1
Basement 12	1
Basement 13	1
Basement 14	1
Basement 15	1
Basement 16	1
Basement 17	1
Basement 18	1
Basement 19	1
Basement 20	1

Basement 1	Quantity
Basement 1	1
Basement 2	1
Basement 3	1
Basement 4	1
Basement 5	1
Basement 6	1
Basement 7	1
Basement 8	1
Basement 9	1
Basement 10	1
Basement 11	1
Basement 12	1
Basement 13	1
Basement 14	1
Basement 15	1
Basement 16	1
Basement 17	1
Basement 18	1
Basement 19	1
Basement 20	1

Basement 1	Quantity
Basement 1	1
Basement 2	1
Basement 3	1
Basement 4	1
Basement 5	1
Basement 6	1
Basement 7	1
Basement 8	1
Basement 9	1
Basement 10	1
Basement 11	1
Basement 12	1
Basement 13	1
Basement 14	1
Basement 15	1
Basement 16	1
Basement 17	1
Basement 18	1
Basement 19	1
Basement 20	1

Basement 1	Quantity
Basement 1	1
Basement 2	1
Basement 3	1
Basement 4	1
Basement 5	1
Basement 6	1
Basement 7	1
Basement 8	1
Basement 9	1
Basement 10	1
Basement 11	1
Basement 12	1
Basement 13	1
Basement 14	1
Basement 15	1
Basement 16	1
Basement 17	1
Basement 18	1
Basement 19	1
Basement 20	1

Basement 1	Quantity
Basement 1	1
Basement 2	1
Basement 3	1
Basement 4	1
Basement 5	1
Basement 6	1
Basement 7	1
Basement 8	1
Basement 9	1
Basement 10	1
Basement 11	1
Basement 12	1
Basement 13	1
Basement 14	1
Basement 15	1
Basement 16	1
Basement 17	1
Basement 18	1
Basement 19	1
Basement 20	1

Basement 1	Quantity
Basement 1	1
Basement 2	1
Basement 3	1
Basement 4	1
Basement 5	1
Basement 6	1
Basement 7	1
Basement 8	1
Basement 9	1
Basement 10	1
Basement 11	1
Basement 12	1
Basement 13	1
Basement 14	1
Basement 15	1
Basement 16	1
Basement 17	1
Basement 18	1
Basement 19	1
Basement 20	1

Basement 1	Quantity
Basement 1	1
Basement 2	1
Basement 3	1
Basement 4	1
Basement 5	1
Basement 6	1
Basement 7	1
Basement 8	1
Basement 9	1
Basement 10	1
Basement 11	1
Basement 12	1
Basement 13	1
Basement 14	1
Basement 15	1
Basement 16	1
Basement 17	1
Basement 18	1
Basement 19	1
Basement 20	1

Basement 1	Quantity
Basement 1	1
Basement 2	1
Basement 3	1
Basement 4	1
Basement 5	1
Basement 6	1
Basement 7	1
Basement 8	1
Basement 9	1
Basement 10	1
Basement 11	1
Basement 12	1
Basement 13	1
Basement 14	1
Basement 15	1
Basement 16	1
Basement 17	1
Basement 18	1
Basement 19	1
Basement 20	1

Basement 1	Quantity
Basement 1	1
Basement 2	1
Basement 3	1
Basement 4	1
Basement 5	1
Basement 6	1
Basement 7	1
Basement 8	1
Basement 9	1
Basement 10	1
Basement 11	1
Basement 12	1
Basement 13	1
Basement 14	1
Basement 15	1
Basement 16	1
Basement 17	1
Basement 18	1
Basement 19	1
Basement 20	1

Basement 1	Quantity
Basement 1	1
Basement 2	1
Basement 3	1
Basement 4	1
Basement 5	1
Basement 6	1
Basement 7	1
Basement 8	1
Basement 9	1
Basement 10	1
Basement 11	1
Basement 12	1
Basement 13	1
Basement 14	1
Basement 15	1
Basement 16	1
Basement 17	1
Basement 18	1
Basement 19	1
Basement 20	1

Basement 1	Quantity
Basement 1	1
Basement 2	1
Basement 3	1
Basement 4	1
Basement 5	1
Basement 6	1
Basement 7	1
Basement 8	1
Basement 9	1
Basement 10	1
Basement 11	1
Basement 12	1
Basement 13	1
Basement 14	1
Basement 15	1
Basement 16	1
Basement 17	1
Basement 18	1
Basement 19	1
Basement 20	1

Basement 1	Quantity
Basement 1	1
Basement 2	1
Basement 3	1
Basement 4	1
Basement 5	1
Basement 6	1
Basement 7	1
Basement 8	1
Basement 9	1
Basement 10	1
Basement 11	1
Basement 12	1
Basement 13	1
Basement 14	1
Basement 15	1
Basement 16	1
Basement 17	1
Basement 18	1
Basement 19	1
Basement 20	1

Basement 1	Quantity
Basement 1	1
Basement 2	1
Basement 3	1
Basement 4	1
Basement 5	1
Basement 6	1
Basement 7	1
Basement 8	1
Basement 9	1
Basement 10	1
Basement 11	1
Basement 12	1
Basement 13	1
Basement 14	1
Basement 15	1
Basement 16	1
Basement 17	1
Basement 18	1
Basement 19	1
Basement 20	1

Basement 1	Quantity
Basement 1	1
Basement 2	1
Basement 3	1
Basement 4	1
Basement 5	1
Basement 6	1
Basement 7	1
Basement 8	1
Basement 9	1
Basement 10	1
Basement 11	1
Basement 12	1
Basement 13	1
Basement 14	1
Basement 15	1
Basement 16	1
Basement 17	1
Basement 18	1
Basement 19	1
Basement 20	1



SECOND FLOOR WEST		
Name	Area	Notes
UNIT 207A	825 SF	
UNIT 207B	805 SF	
UNIT 207C	1003 SF	
UNIT 207D	833 SF	
UNIT 207E	825 SF	
UNIT 207F	792 SF	
UNIT 207G	620 SF	
UNIT 207H	905 SF	
UNIT 207I	725 SF	
UNIT 207J	915 SF	
UNIT 207K	792 SF	
UNIT 207L	825 SF	
UNIT 207M	715 SF	
UNIT 207N	715 SF	
UNIT 207O	1240 SF	
UNIT 207P	897 SF	
UNIT 207Q	1115 SF	
UNIT 207R	901 SF	
UNIT 207S	1213 SF	

SECOND FLOOR EAST		
Name	Area	Notes
UNIT 210E	841 SF	
UNIT 210F	805 SF	
UNIT 210G	1003 SF	
UNIT 210H	833 SF	
UNIT 210I	825 SF	
UNIT 210J	792 SF	
UNIT 210K	620 SF	
UNIT 210L	905 SF	
UNIT 210M	725 SF	
UNIT 210N	915 SF	
UNIT 210O	792 SF	
UNIT 210P	825 SF	
UNIT 210Q	715 SF	
UNIT 210R	715 SF	
UNIT 210S	1240 SF	
UNIT 210T	897 SF	
UNIT 210U	1115 SF	
UNIT 210V	901 SF	
UNIT 210W	1213 SF	

Second Floor East
 1/8" = 1'-0"



3 South Elevation - Walnut Elevation
Scale: 1" = 10' 0"

Sheet No.	PR-10
Date	08/11/2023
Drawn By	Architect
Checked By	Architect
Discipline	Architecture
Concept/Elevation	Concept Elevations

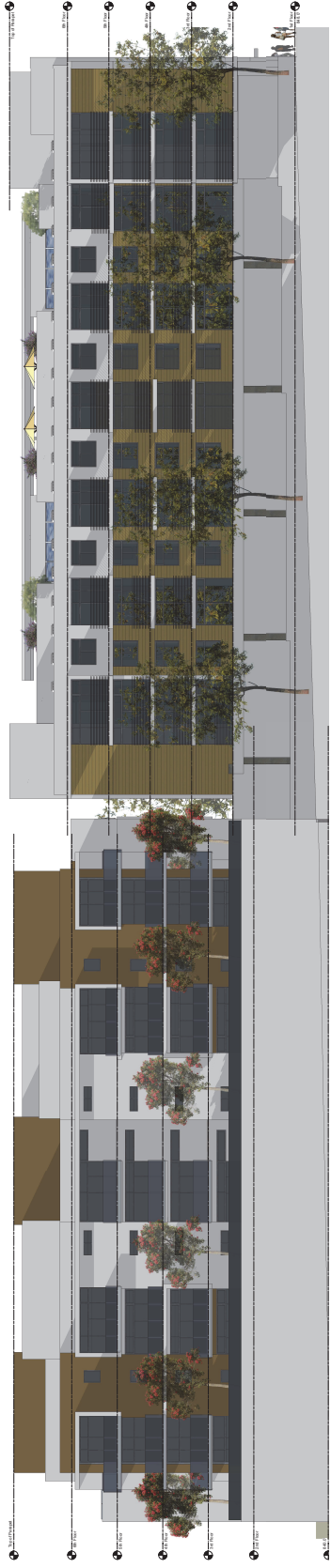
1 West Elevation
Scale: 1" = 10' 0"



New Mixed Use Project
 711 East Walnut St., Pasadena

Use of Architect's Drawings
 These drawings were prepared for the specific project and site described herein. They are not to be used for any other project or site without the written consent of The Group Architects. The drawings are the property of The Group Architects and shall remain confidential. No part of these drawings may be reproduced, stored in a retrieval system, or transmitted in any form or by any means, electronic, mechanical, photocopying, recording, or by any information storage and retrieval system, without the prior written permission of The Group Architects.

Sheet No.	PR-11
Date	
Drawn By	
Reviewed By	
Checked By	
Discipline	Concept Elevations



North Elevation
 Scale: 1" = 10'



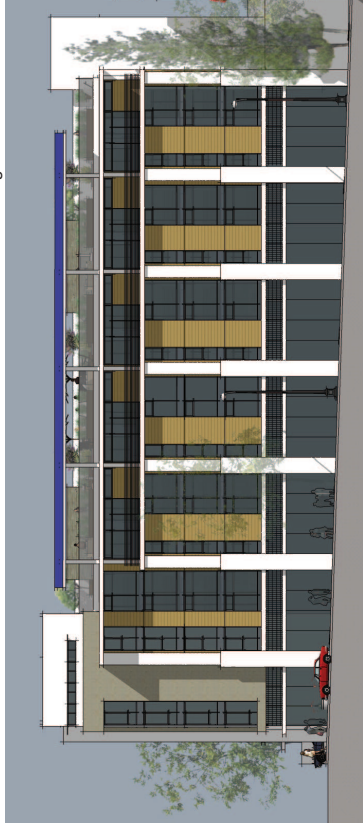
East Elevation
 Scale: 1" = 10'



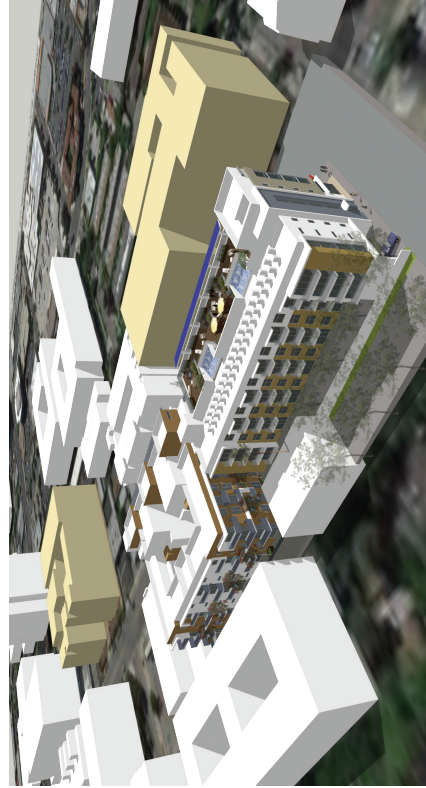
Aerial View Looking NE



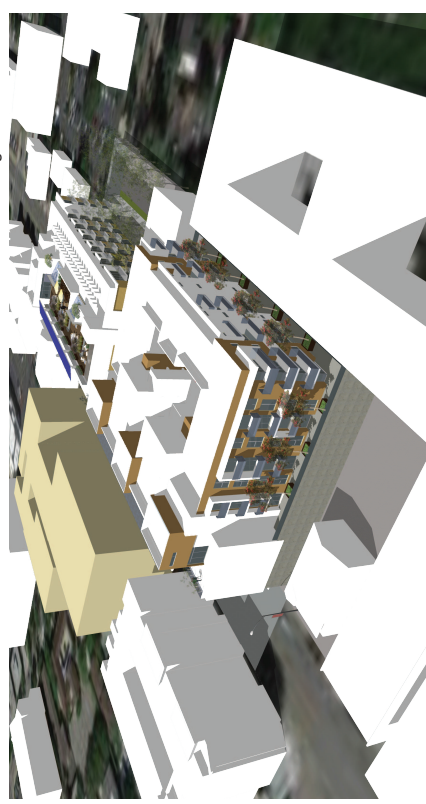
Aerial View Looking NW



Street View Along Walnut Avenue



Aerial View Looking SE



Aerial View Looking SW

New Mixed Use Project for
DC Walnut Holdings LLC
711 East Walnut St., Pasadena

USE OF ARCHITECT'S SERVICES
 The Architect's services are limited to the design of the building and site. The Architect is not responsible for the design of the interior spaces, mechanical, electrical, plumbing, or other systems. The Architect is not responsible for the design of the landscape, parking, or other site-related elements. The Architect is not responsible for the design of the building's structure, foundation, or other structural elements. The Architect is not responsible for the design of the building's exterior materials, finishes, or other aesthetic elements. The Architect is not responsible for the design of the building's interior finishes, fixtures, or other interior elements. The Architect is not responsible for the design of the building's furniture, fixtures, or other interior elements. The Architect is not responsible for the design of the building's landscaping, site work, or other site-related elements. The Architect is not responsible for the design of the building's structure, foundation, or other structural elements. The Architect is not responsible for the design of the building's exterior materials, finishes, or other aesthetic elements. The Architect is not responsible for the design of the building's interior finishes, fixtures, or other interior elements. The Architect is not responsible for the design of the building's furniture, fixtures, or other interior elements. The Architect is not responsible for the design of the building's landscaping, site work, or other site-related elements.

Project No.	PR-13
Client	DC Walnut Holdings LLC
Address	711 East Walnut St., Pasadena
City	Pasadena, CA
State	CA
Country	USA
Scale	1/8" = 1'-0"
Drawn By	Architect
Checked By	Architect
Approved By	Architect
Date	10/1/2017



Architect of Record
 TGA Architecture, Inc.
 11111 Wilshire Blvd., Suite 1000
 Los Angeles, CA 90024
 Phone: (310) 206-1111
 Fax: (310) 206-1112
 www.tgaarch.com



Street View Looking NE



Street View Looking NW



Roof Terrace at 681 Walnut



Street View Looking NW



Street View Looking NE



Street Entrance at 711 Walnut



Architect of Record
 TGA
 THE GROUNDED GROUP ARCHITECTURE
 1100 S. GARDEN ST., SUITE 200
 PASADENA, CALIFORNIA 91101
 TEL: 626.799.1100
 WWW.TGAGROUP.COM

No. 02-10-10-0000-0000
 No. 02-10-10-0000-0000

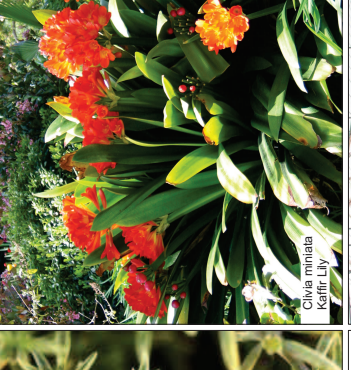
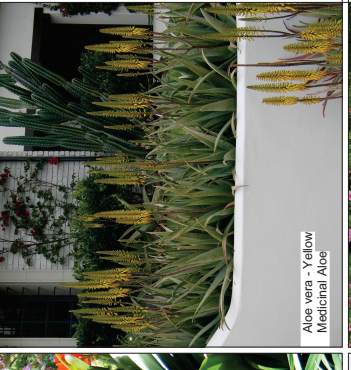
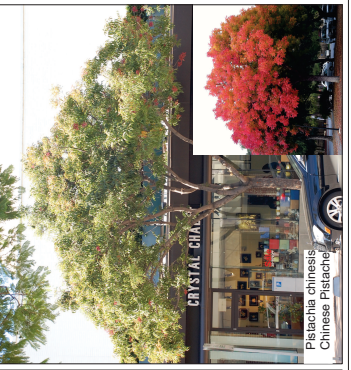
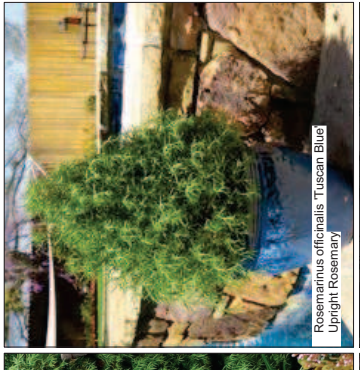
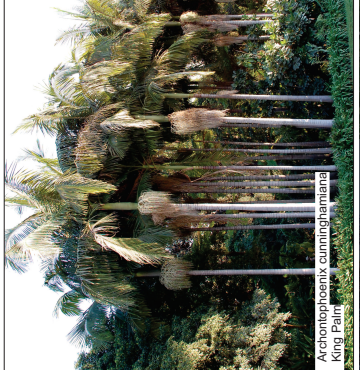
New Mixed Use Project for
 DC Walnut Holdings LLC
 711 East Walnut St., Pasadena

Use of Architect's Stamp
 The State Board of Architecture and Architectural Examiners (SBAE) has approved the use of this stamp for the purpose of certifying that the architect is a duly licensed professional architect in the State of California. The architect is not responsible for the accuracy of the information provided in this stamp. The architect is not responsible for the accuracy of the information provided in this stamp. The architect is not responsible for the accuracy of the information provided in this stamp.

Project No.	02-10-10-0000-0000
PR-14	02-10-10-0000-0000
Drawn By	02-10-10-0000-0000
Checked By	02-10-10-0000-0000
Scale	02-10-10-0000-0000
Date	02-10-10-0000-0000
Project Name	02-10-10-0000-0000
Client Name	02-10-10-0000-0000
Project Address	02-10-10-0000-0000
Project City	02-10-10-0000-0000
Project State	02-10-10-0000-0000
Project Zip	02-10-10-0000-0000
Project Phone	02-10-10-0000-0000
Project Email	02-10-10-0000-0000
Project Website	02-10-10-0000-0000
Project Description	02-10-10-0000-0000
Project Status	02-10-10-0000-0000
Project Budget	02-10-10-0000-0000
Project Start Date	02-10-10-0000-0000
Project End Date	02-10-10-0000-0000
Project Completion Date	02-10-10-0000-0000
Project Closeout Date	02-10-10-0000-0000
Project Handoff Date	02-10-10-0000-0000



Concept Roof Deck at West Building



Trees

Symbol	Quantity - Size	Botanical Name	Common Name	Notes
	10' - 12' Box	Lagerstroemia faurii x indica 'Nalchez'	White Flowering Hybrid Grape Myrtle	Water: M Size: 2'4" Shaded
	16' - 24' Box	Platyschia chinensis	Chinese Pistache	Water: M Size: 15'20" W x 20'25" H

Plant Palette

Symbol	Quantity - Size	Botanical Name	Common Name	Notes
	8 - 15 Gallon	Polygonum spectabile rostratum Espaliered	Espaliered Fern Pine	Water: M Size: 2'4" Shaded
	6 - 5 Gallon	Cordia alliodora 'Yellow Star'	Upright Yellow Star	Water: M Size: 4'5" W x 4'5" H
	4 - 3 Gallon	Fuchsia triphylla Gartenmeister Bonstedt	Gartenmeister Fuchsia	Water: M Size: 4'5" W x 4'5" H
	10 - 5 Gallon	Stenocarpus sinuatus Firewheel Tree	Upright Rosemary	Water: M Size: 4'5" W x 4'5" H
	45 - 5 Gallon	Westringia Wynyabbe Highlight	Variegated Australian Rosemary	Water: M Size: 3' - 4'

Perennials

	42 - 5 Gallon	Clivia miniata	Kafrir Lily	Water: M Size: 3'4" H
	54 - 5 Gallon	Aloe vera	Medicinal Aloe	Water: LVL

Succulents

	54 - 5 Gallon	Aloe vera	Medicinal Aloe	Water: LVL
--	---------------	-----------	----------------	------------

Grasses

	32 - 5 Gallon	Pennisetum 'Eaton Canyon'	Baton Canyon Pennisetum	Water: M Size: 2' W x 2' H
--	---------------	---------------------------	-------------------------	-------------------------------

Ground Cover Legend

	10' 3" x 10' 3" (3' 0" Center)	Penstemon 'Eaton Canyon'	Red Apple, Baby Sunrose	Water: LVL
--	--------------------------------	--------------------------	-------------------------	------------

Plant Notes:

Trees:
 Lagerstroemia faurii x indica 'Nalchez' - White Flowering Hybrid Grape Myrtle: This tree has an attractive orange-red fall color and when deciduous has an attractive branch and trunk presence. The white flowers are fragrant and attract butterflies. It is a small tree, reaching 15-20 feet in height. It is a shrubby tree with a rounded canopy. It is a shrubby tree with a rounded canopy. It is a shrubby tree with a rounded canopy.

Plant Palette:
 Stenocarpus sinuatus - Firewheel Tree: This tree has an attractive orange-red fall color and when deciduous has an attractive branch and trunk presence. The white flowers are fragrant and attract butterflies. It is a small tree, reaching 15-20 feet in height. It is a shrubby tree with a rounded canopy. It is a shrubby tree with a rounded canopy. It is a shrubby tree with a rounded canopy.

Perennials:
 Clivia miniata - Kafrir Lily: This plant is a shrubby perennial with a rounded canopy. It is a shrubby perennial with a rounded canopy. It is a shrubby perennial with a rounded canopy.

Succulents:
 Aloe vera - Medicinal Aloe: This plant is a shrubby perennial with a rounded canopy. It is a shrubby perennial with a rounded canopy. It is a shrubby perennial with a rounded canopy.

Grasses:
 Pennisetum 'Eaton Canyon' - Baton Canyon Pennisetum: This grass is a shrubby perennial with a rounded canopy. It is a shrubby perennial with a rounded canopy. It is a shrubby perennial with a rounded canopy.

Square and Rectangular Planters

Ground Floor:
 Rectangular Planters
 3 - 2'0" Feet x 10'0" Feet
 3 - 2'0" Feet x 10'0" Feet

Second Floor:
 Rectangular Planters
 3 - 2'0" Feet x 10'0" Feet
 3 - 2'0" Feet x 10'0" Feet

Rectangular Planters for Fountains:
 4 - 2'0" Feet x 10'0" Feet

Rectangular Planters:
 6 - 1'0" Feet x 10'0" Feet
 2 - 2'0" Feet x 10'0" Feet
 8 - 2'0" Feet x 10'0" Feet
 11 - 2'0" Feet x 10'0" Feet

Third Floor:
 4 - 1'0" Diameter Pots

Plant Notes:

Trees:
 Lagerstroemia faurii x indica 'Nalchez' - White Flowering Hybrid Grape Myrtle: This tree has an attractive orange-red fall color and when deciduous has an attractive branch and trunk presence. The white flowers are fragrant and attract butterflies. It is a small tree, reaching 15-20 feet in height. It is a shrubby tree with a rounded canopy. It is a shrubby tree with a rounded canopy. It is a shrubby tree with a rounded canopy.

Plant Palette:
 Stenocarpus sinuatus - Firewheel Tree: This tree has an attractive orange-red fall color and when deciduous has an attractive branch and trunk presence. The white flowers are fragrant and attract butterflies. It is a small tree, reaching 15-20 feet in height. It is a shrubby tree with a rounded canopy. It is a shrubby tree with a rounded canopy. It is a shrubby tree with a rounded canopy.

Perennials:
 Clivia miniata - Kafrir Lily: This plant is a shrubby perennial with a rounded canopy. It is a shrubby perennial with a rounded canopy. It is a shrubby perennial with a rounded canopy.

Succulents:
 Aloe vera - Medicinal Aloe: This plant is a shrubby perennial with a rounded canopy. It is a shrubby perennial with a rounded canopy. It is a shrubby perennial with a rounded canopy.

Grasses:
 Pennisetum 'Eaton Canyon' - Baton Canyon Pennisetum: This grass is a shrubby perennial with a rounded canopy. It is a shrubby perennial with a rounded canopy. It is a shrubby perennial with a rounded canopy.

Street Trees

Symbol	Quantity - Size	Botanical Name	Common Name	Notes
	4 - 24" Box	Lagerstroemia faurii x indica 'Nalchez'	White Flowering Hybrid Grape Myrtle	Water: M Size: 2'4" Shaded
	16' - 24' Box	Platyschia chinensis	Chinese Pistache	Water: M Size: 15'20" W x 20'25" H

Plant Notes:

Trees:
 Lagerstroemia faurii x indica 'Nalchez' - White Flowering Hybrid Grape Myrtle: This tree has an attractive orange-red fall color and when deciduous has an attractive branch and trunk presence. The white flowers are fragrant and attract butterflies. It is a small tree, reaching 15-20 feet in height. It is a shrubby tree with a rounded canopy. It is a shrubby tree with a rounded canopy. It is a shrubby tree with a rounded canopy.

Plant Palette:
 Stenocarpus sinuatus - Firewheel Tree: This tree has an attractive orange-red fall color and when deciduous has an attractive branch and trunk presence. The white flowers are fragrant and attract butterflies. It is a small tree, reaching 15-20 feet in height. It is a shrubby tree with a rounded canopy. It is a shrubby tree with a rounded canopy. It is a shrubby tree with a rounded canopy.

Perennials:
 Clivia miniata - Kafrir Lily: This plant is a shrubby perennial with a rounded canopy. It is a shrubby perennial with a rounded canopy. It is a shrubby perennial with a rounded canopy.

Succulents:
 Aloe vera - Medicinal Aloe: This plant is a shrubby perennial with a rounded canopy. It is a shrubby perennial with a rounded canopy. It is a shrubby perennial with a rounded canopy.

Grasses:
 Pennisetum 'Eaton Canyon' - Baton Canyon Pennisetum: This grass is a shrubby perennial with a rounded canopy. It is a shrubby perennial with a rounded canopy. It is a shrubby perennial with a rounded canopy.

Ground Cover Legend

	10' 3" x 10' 3" (3' 0" Center)	Penstemon 'Eaton Canyon'	Red Apple, Baby Sunrose	Water: LVL
--	--------------------------------	--------------------------	-------------------------	------------

Plant Notes:

Trees:
 Lagerstroemia faurii x indica 'Nalchez' - White Flowering Hybrid Grape Myrtle: This tree has an attractive orange-red fall color and when deciduous has an attractive branch and trunk presence. The white flowers are fragrant and attract butterflies. It is a small tree, reaching 15-20 feet in height. It is a shrubby tree with a rounded canopy. It is a shrubby tree with a rounded canopy. It is a shrubby tree with a rounded canopy.

Plant Palette:
 Stenocarpus sinuatus - Firewheel Tree: This tree has an attractive orange-red fall color and when deciduous has an attractive branch and trunk presence. The white flowers are fragrant and attract butterflies. It is a small tree, reaching 15-20 feet in height. It is a shrubby tree with a rounded canopy. It is a shrubby tree with a rounded canopy. It is a shrubby tree with a rounded canopy.

Perennials:
 Clivia miniata - Kafrir Lily: This plant is a shrubby perennial with a rounded canopy. It is a shrubby perennial with a rounded canopy. It is a shrubby perennial with a rounded canopy.

Succulents:
 Aloe vera - Medicinal Aloe: This plant is a shrubby perennial with a rounded canopy. It is a shrubby perennial with a rounded canopy. It is a shrubby perennial with a rounded canopy.

Grasses:
 Pennisetum 'Eaton Canyon' - Baton Canyon Pennisetum: This grass is a shrubby perennial with a rounded canopy. It is a shrubby perennial with a rounded canopy. It is a shrubby perennial with a rounded canopy.

Square and Rectangular Planters

Ground Floor:
 Rectangular Planters
 3 - 2'0" Feet x 10'0" Feet
 3 - 2'0" Feet x 10'0" Feet

Second Floor:
 Rectangular Planters
 3 - 2'0" Feet x 10'0" Feet
 3 - 2'0" Feet x 10'0" Feet

Rectangular Planters for Fountains:
 4 - 2'0" Feet x 10'0" Feet

Rectangular Planters:
 6 - 1'0" Feet x 10'0" Feet
 2 - 2'0" Feet x 10'0" Feet
 8 - 2'0" Feet x 10'0" Feet
 11 - 2'0" Feet x 10'0" Feet

Third Floor:
 4 - 1'0" Diameter Pots