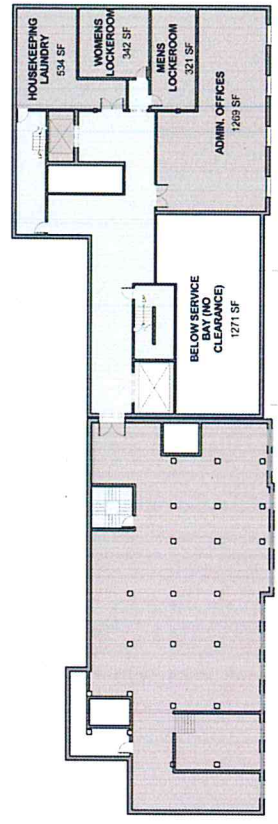


Attachment N:
Alternative 2A Design Study

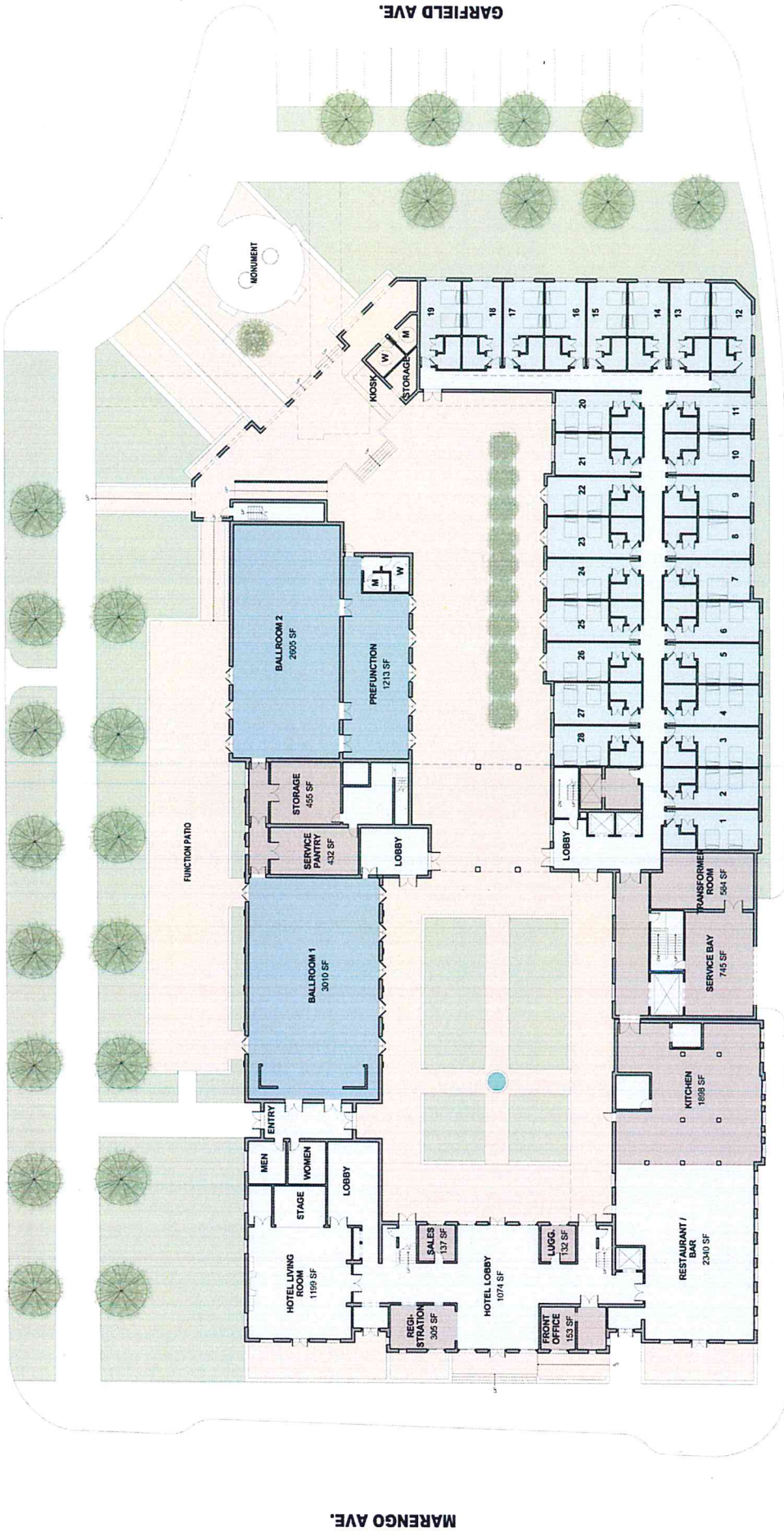


LEVEL 00

1/16" = 1'-0"



HOLLY STREET



MARENGO AVE.

GARFIELD AVE.

UNION STREET

LEVEL 01

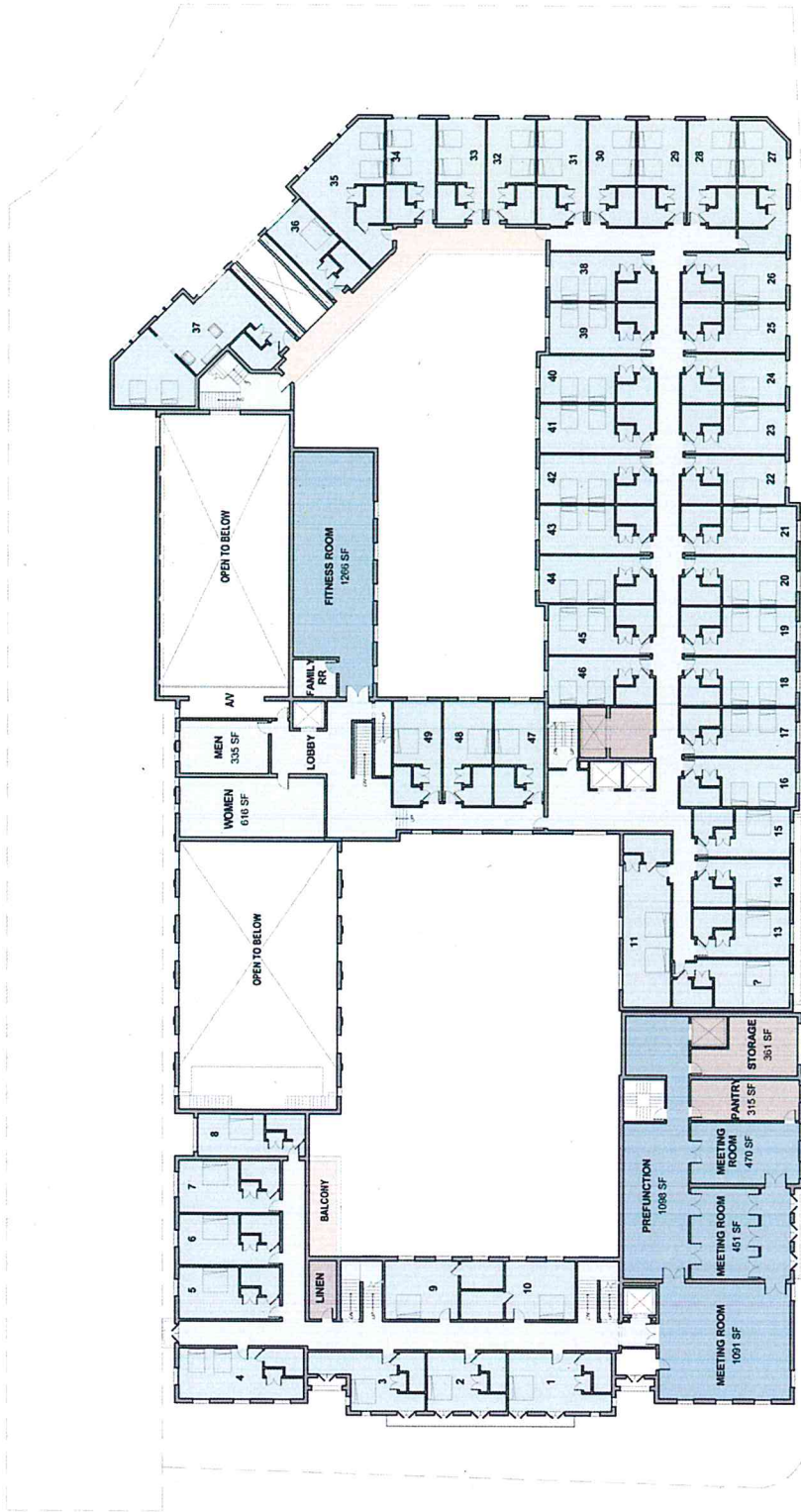
1/16" = 1'-0"

28 ROOMS



Architectural
Resources Group

A KIMPTON HOTEL
PASADENA YWCA
05/06/16

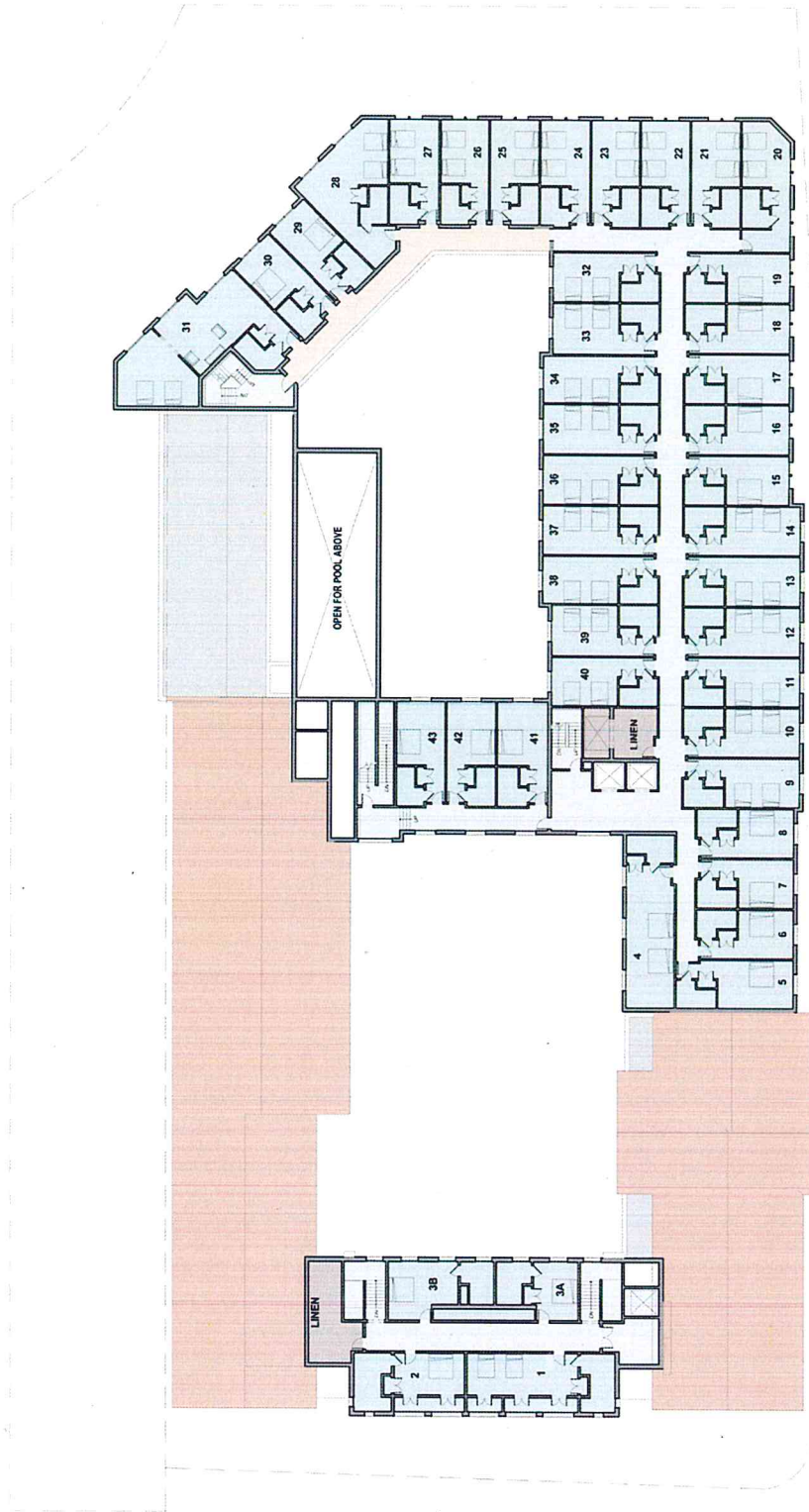


LEVEL 02

1/16" = 1'-0"

49 ROOMS





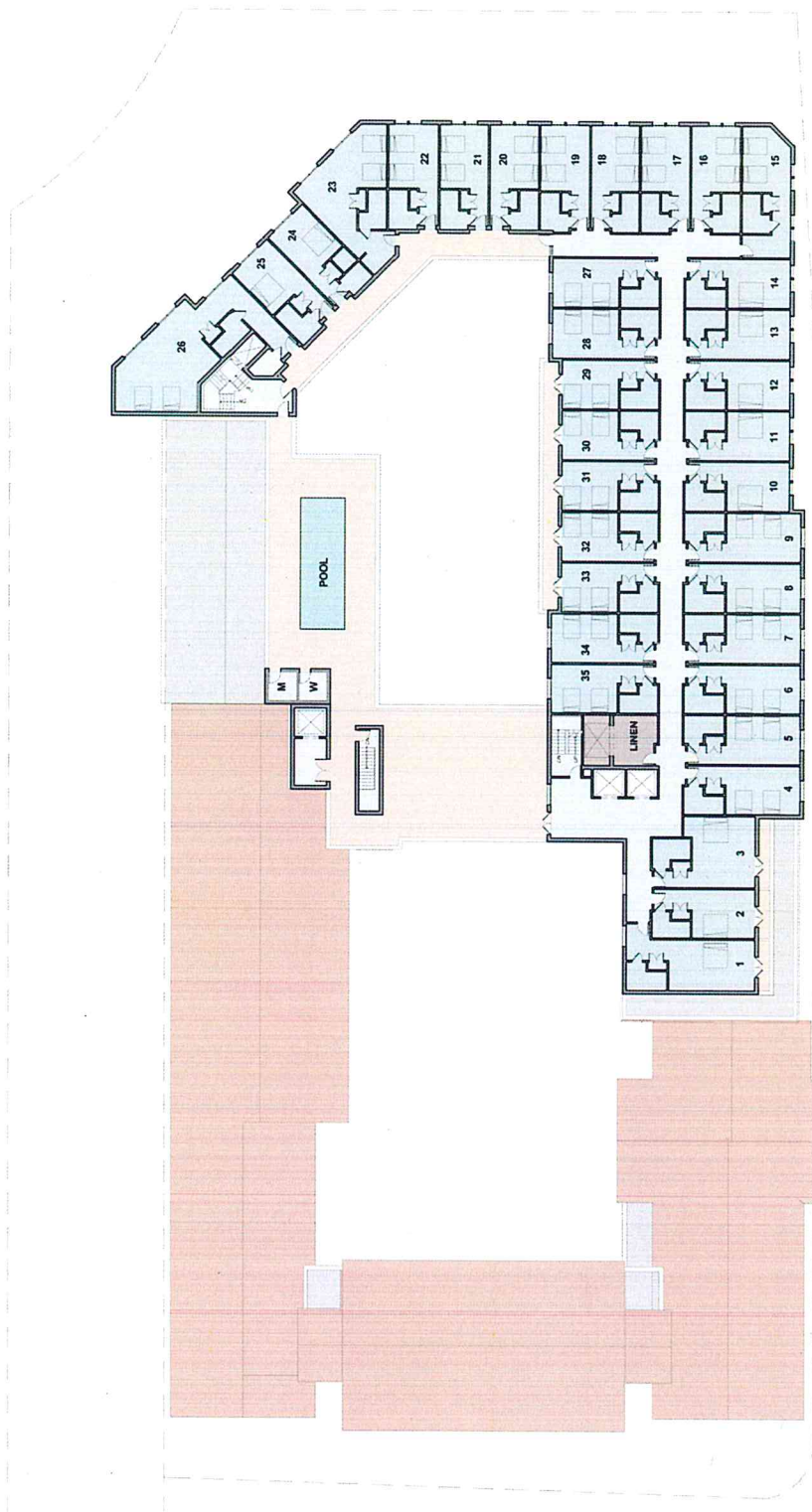
LEVEL 03

1/16" = 1'-0"

43 ROOMS



Architectural
Resources Group



LEVEL 04

1/16" = 1'-0"

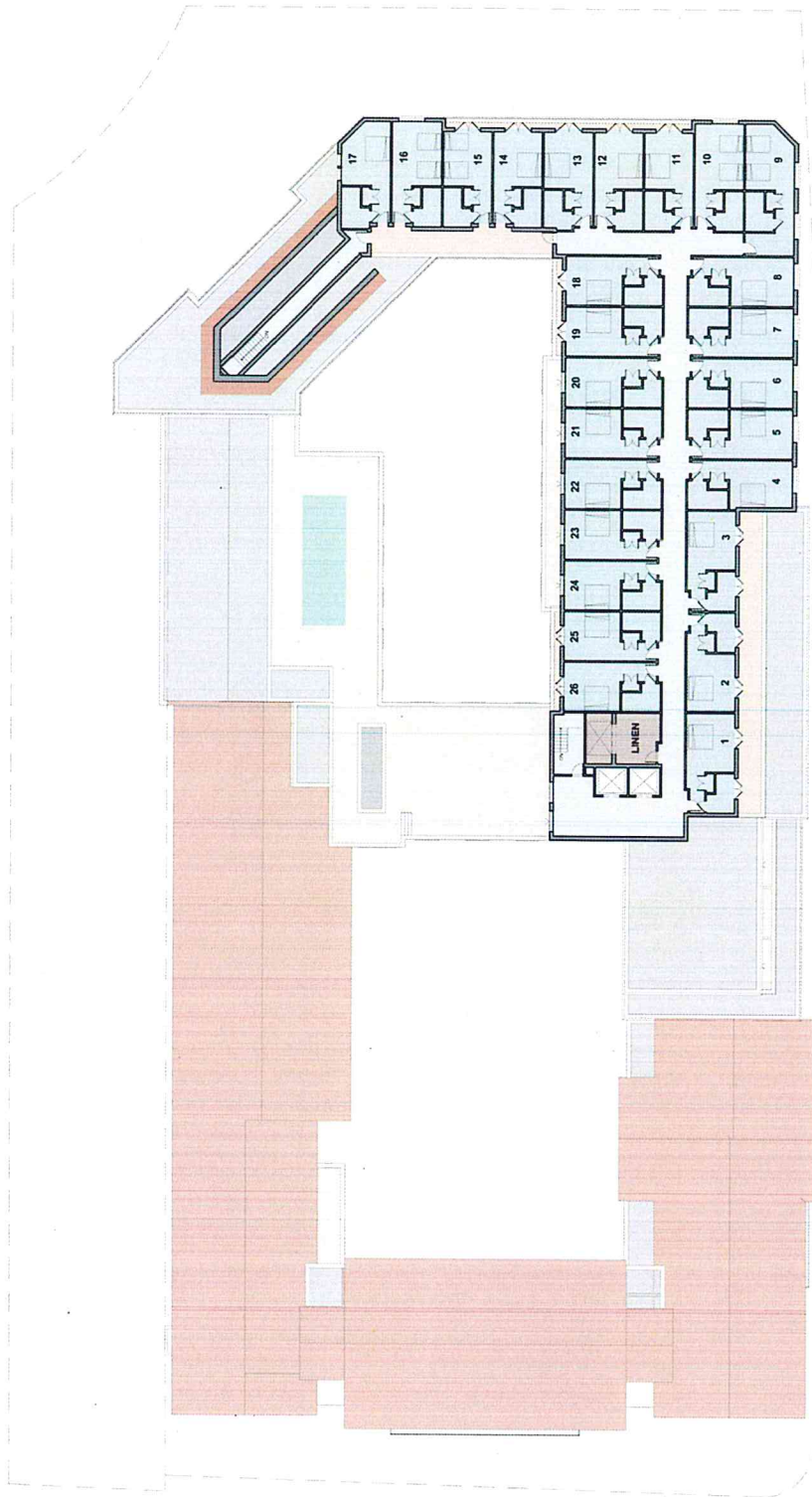
35 ROOMS



Architectural
Resources Group

A KIMPTON HOTEL
PASADENA YWCA
05/06/16





LEVEL 05

1/16" = 1'-0"

26 ROOMS



Top of NCCS
89'-11.03"

Level 5
800'-0 3/8"

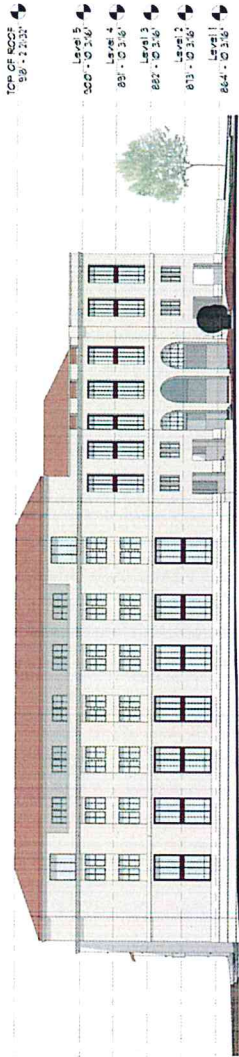
Level 4
881'-0 3/8"

Level 3
882'-0 3/8"

Level 2
873'-0 3/8"

Level 1
864'-0 3/8"

1
1/16" = 1'-0"



Top of NCCS
89'-11.03"

Level 5
800'-0 3/8"

Level 4
881'-0 3/8"

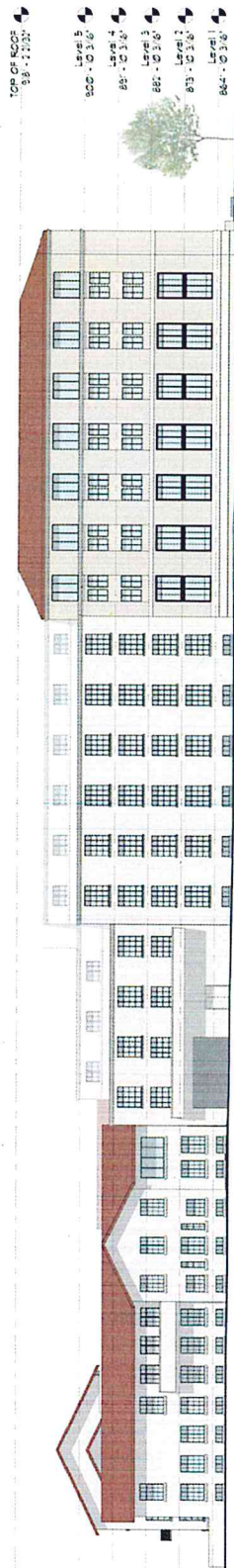
Level 3
882'-0 3/8"

Level 2
873'-0 3/8"

Level 1
864'-0 3/8"

2
1/16" = 1'-0"

2 GARFIELD STREET ELEVATION



Top of NCCS
89'-11.03"

Level 5
800'-0 3/8"

Level 4
881'-0 3/8"

Level 3
882'-0 3/8"

Level 2
873'-0 3/8"

Level 1
864'-0 3/8"

3
1/16" = 1'-0"

3 UNION STREET ELEVATION

ELEVATIONS

1/16" = 1'-0"



Architectural
Resources Group

A KIMPTON HOTEL
PASADENA YWCA
05/09/16



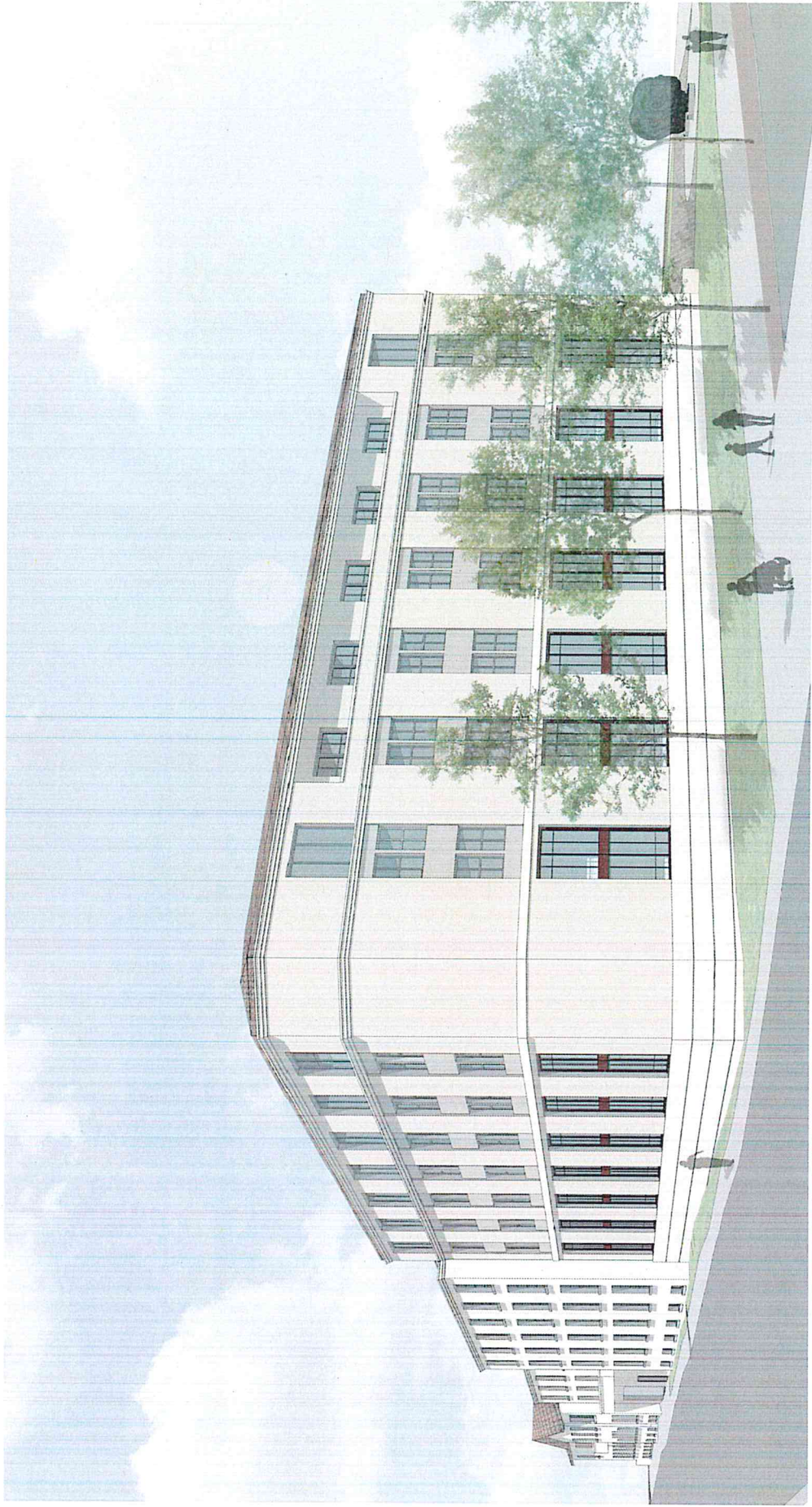


A KIMPTON HOTEL
PASADENA YWCA
05/10/16

GARFIELD & HOLLY



Architectural
Resources Group



A KIMPTON HOTEL
PASADENA YWCA
05/10/16

GARFIELD & UNION



Architectural
Resources Group



A KIMPTON HOTEL
PASADENA YWCA
05/10/16

UNION & MARENGO



Architectural
Resources Group