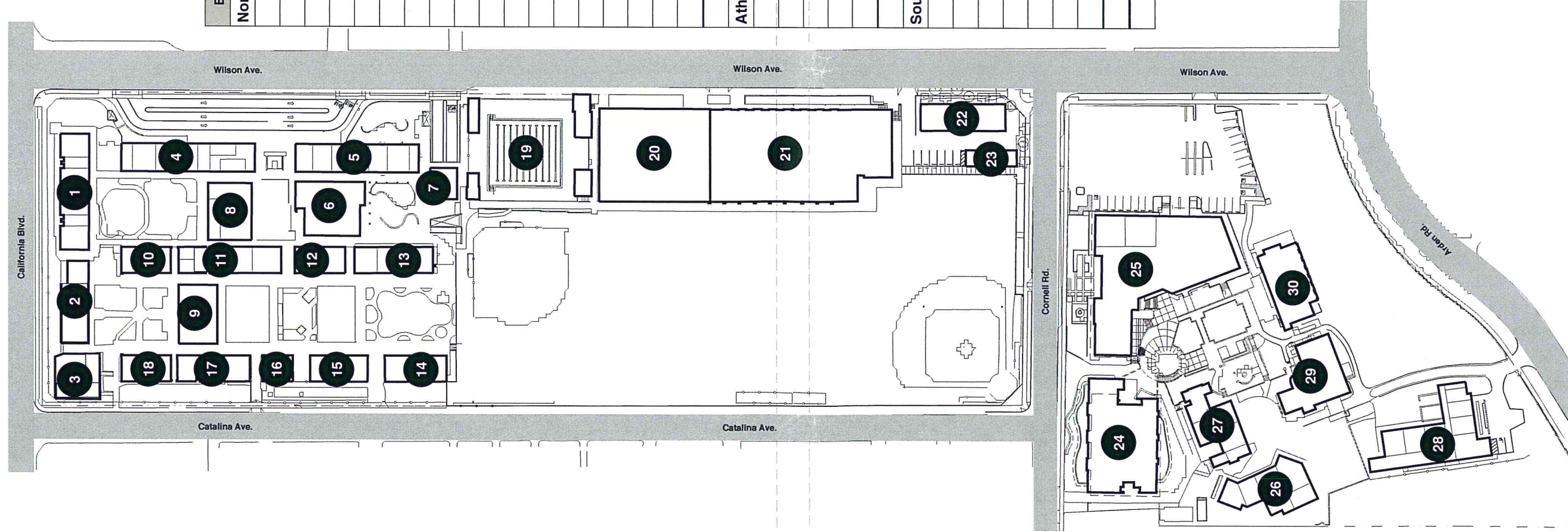


ATTACHMENT B



EXHIBIT 1- Existing Buildings Polytechnic School 2015 Master Development Plan



Bldg #	Usage	Architect	Year Built
North Campus			
1	Classrooms	HMC Architects	2011
2	Classrooms	Gordon Kaufman	1927
3	Classrooms / Health Offices	Gordon Kaufman	1927
4	Classrooms / Offices	HMC Architects	2011
5	Classrooms / Offices	HMC Architects	2011
6	Library / Media	HMC Architects	2011
7	Instrumental Music	Gordon Kaufman	1938
8	Dining Hall	Myron Hunt	1923
9	Auditorium	Hunt & Grey	1907
10	Classrooms	Hunt & Grey	1907
11	Classrooms	Hunt & Grey	1907
12	Classrooms	Hunt & Grey	1907
13	Classrooms	Hunt & Grey	1916
14	Classrooms	Hunt & Grey	1916
15	Classrooms	Hunt & Grey	1916
16	Classrooms	Hunt & Grey	1907
17	Classrooms	Hunt & Grey	1907
18	Classrooms	Hunt & Grey	1907
Athletic Precinct			
19	Swimming Pool / Structures	Moule & Polyzoides	2006
20	Gymnasium (Girls)	Neptune, Thomas, Davis	1989
21	Gymnasium (Boys)	Kistner, Wright, Wright	1968
22	Technology, Operations, Maintenance	Roland Coate	1928
23	Maintenance Storage	HMC Architects	2009
South Campus			
24	Math, Science, Library	HMC Architects	2012
25	Garland Theater	Millard Achuleta Assoc.	1984
26	Hixon - Woodshop / Ceramics	Smith, Powell, Morgridge	1959
27	Fullerton - Classrooms / Offices	Christopher Ward	1996
28	Language Arts - Classrooms / Offices	Christopher Ward	1997
29	Haaga House - Classrooms / Offices	J.J. Blick	1907
30	Boswell - Visual Arts	Eggers, Wilkman, Whittle	1967

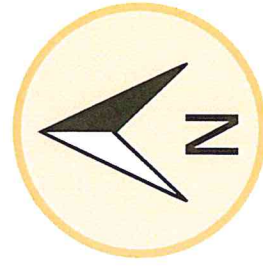
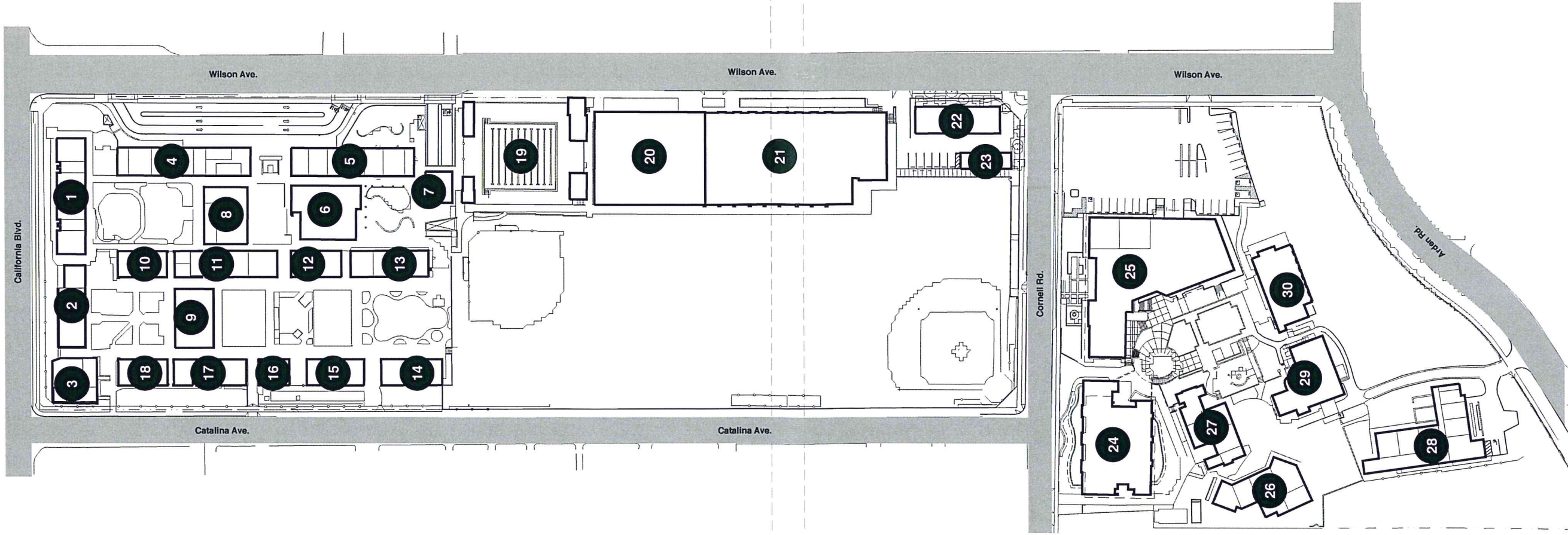




EXHIBIT 2 - Existing Buildings

Polytechnic School
2015 Master Development Plan



Bldg #	Usage	# of Stories	Bldg Height Limit (feet)	Bldg Sq. Ft.	Bldg Footprint (sq ft)
North Campus					
1	Classrooms	1	max 35'	4,293	4,293
2	Classrooms	1	max 28'	2,815	2,815
3	Classrooms / Health Offices	1	max 28'	2,867	2,867
4	Classrooms / Offices	2	max 35'	13,077	9,720
5	Classrooms / Offices	2	max 35'	8,718	9,070
6	Library / Media	2	max 35'	6,105	5,695
7	Instrumental Music	1	max 28'	1,127	1,127
8	Dining Hall	1	max 28'	3,263	3,263
9	Auditorium	1	max 28'	3,482	3,482
10	Classrooms	1	max 28'	1,825	1,825
11	Classrooms	1	max 28'	4,282	4,282
12	Classrooms	1	max 28'	2,140	2,140
13	Classrooms	1	max 28'	3,122	3,122
14	Classrooms	1	max 28'	2,079	2,079
15	Classrooms	1	max 28'	2,426	2,426
16	Classrooms	1	max 28'	1,114	1,114
17	Classrooms	1	max 28'	2,937	2,937
18	Classrooms	1	max 28'	1,440	1,440
				67,112	63,697
Athletic Precinct					
19	Swimming Pool / Structures	1	max 28'	1,000	1,000
20	Gymnasium (Girls)	1	max 35'	15,300	16,400
21	Gymnasium (Boys)	1	max 35'	18,486	22,000
22	Technology, Operations, Maintenance	1	max 35'	3,429	3,429
23	Maintenance Storage	1	max 35'	1,000	1,000
				39,215	43,829
South Campus					
24	Math, Science, Library	3	max 35'	29,380	10,115
25	Garland Theater	2	max 35'	13,937	16,800
26	Hixon - Woodshop / Ceramics	1	max 35'	3,700	3,700
27	Fullerton - Classrooms / Offices	2	max 35'	6,688	6,630
28	Language Arts - Classrooms / Offices	1	max 35'	6,534	6,534
29	Haaga House - Classrooms / Offices	2	max 35'	4,348	4,520
30	Boswell - Visual Arts	1	max 35'	4,097	4,097
				68,684	52,396
				175,011	159,922

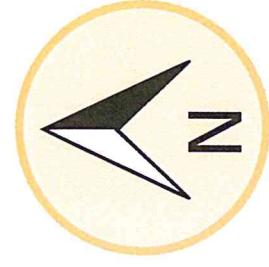




EXHIBIT 3 - Existing Buildings to Demolish

Polytechnic School
2015 Master Development Plan

Bldg #	Usage	# of Stories	Bldg Height Limit (feet)	Bldg Sq. Ft.	Bldg Footprint (sq ft)
Athletic Precinct					
20	Gymnasium (Girls)	1	max 35'	15,300	16,400
21	Gymnasium (Boys)	1	max 35'	18,486	22,000
				33,786	38,400

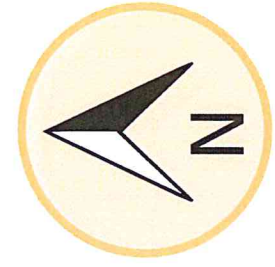
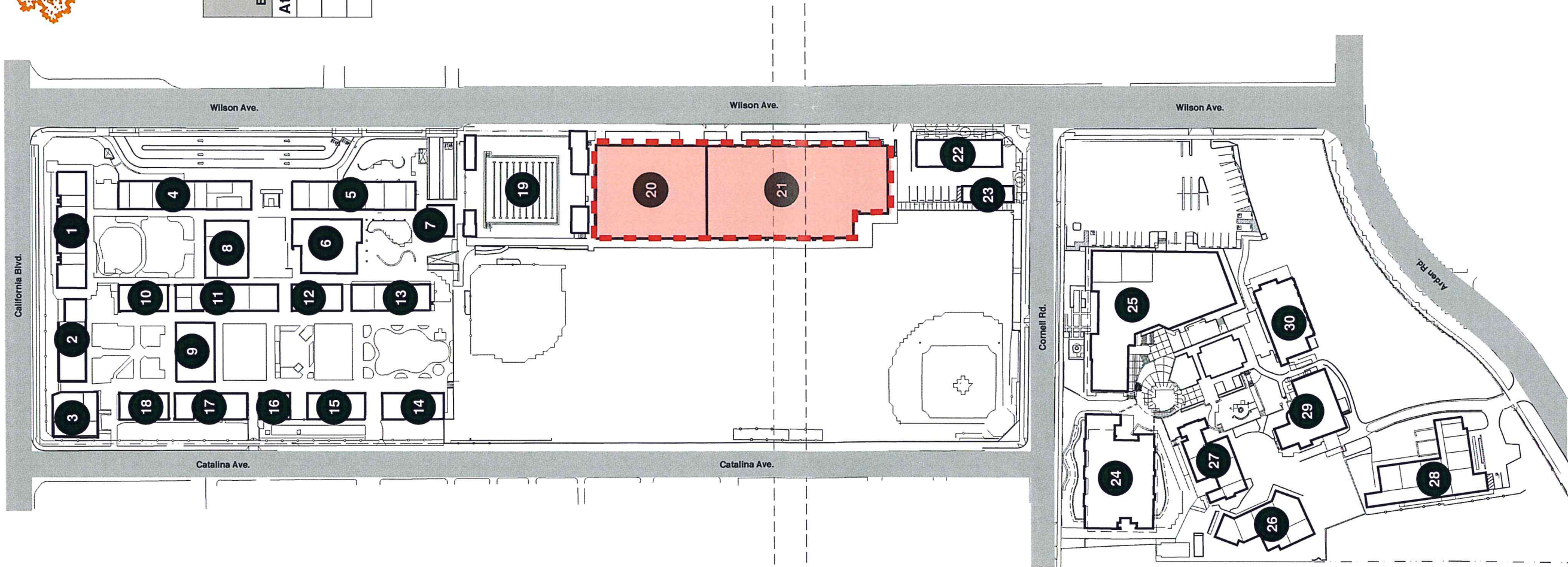


EXHIBIT 5 MASSING - Looking South on Wilson

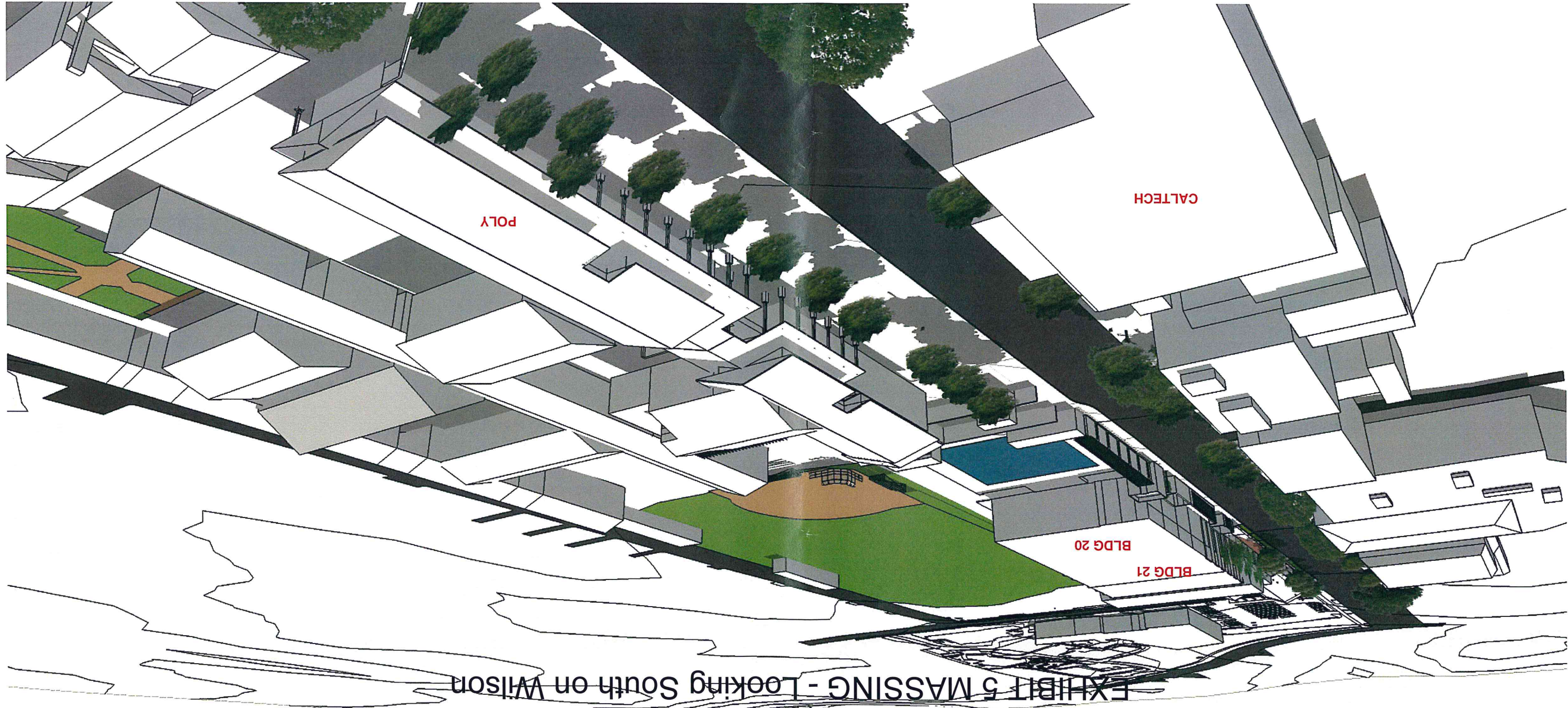


EXHIBIT 6 MASSING - Looking North on Wilson

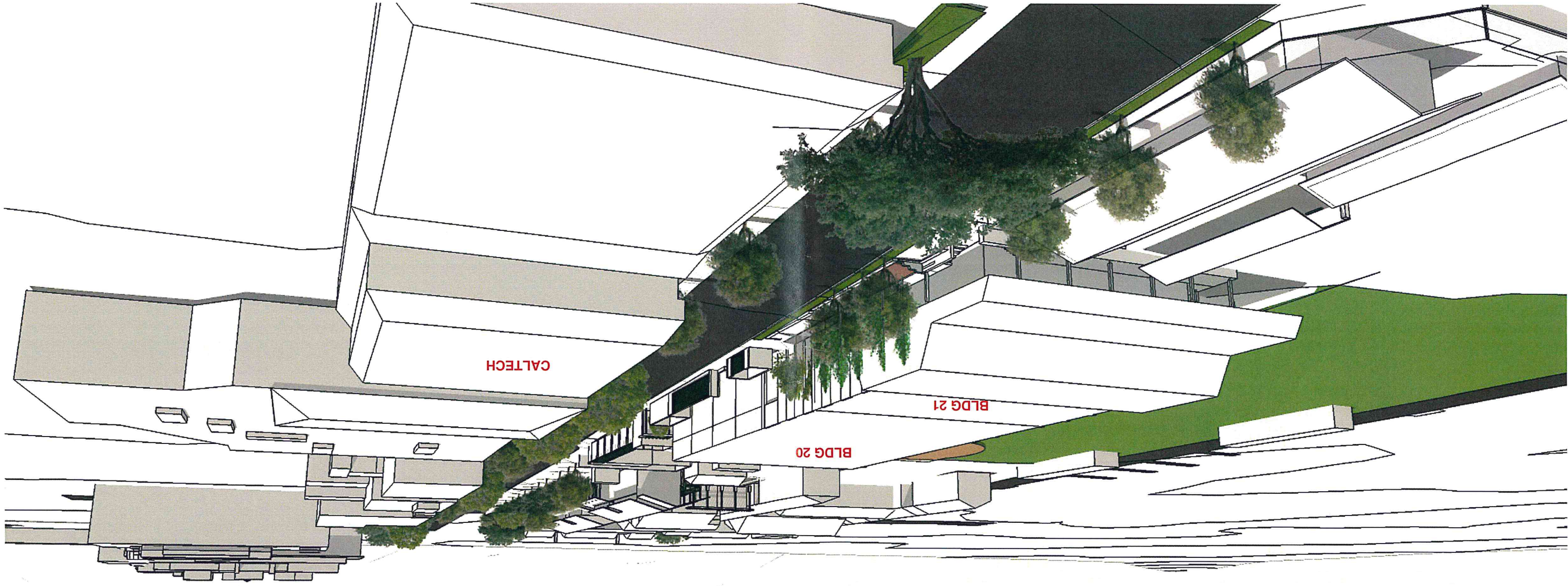


EXHIBIT 7 MASSING - Close-Up Looking South on Wilson

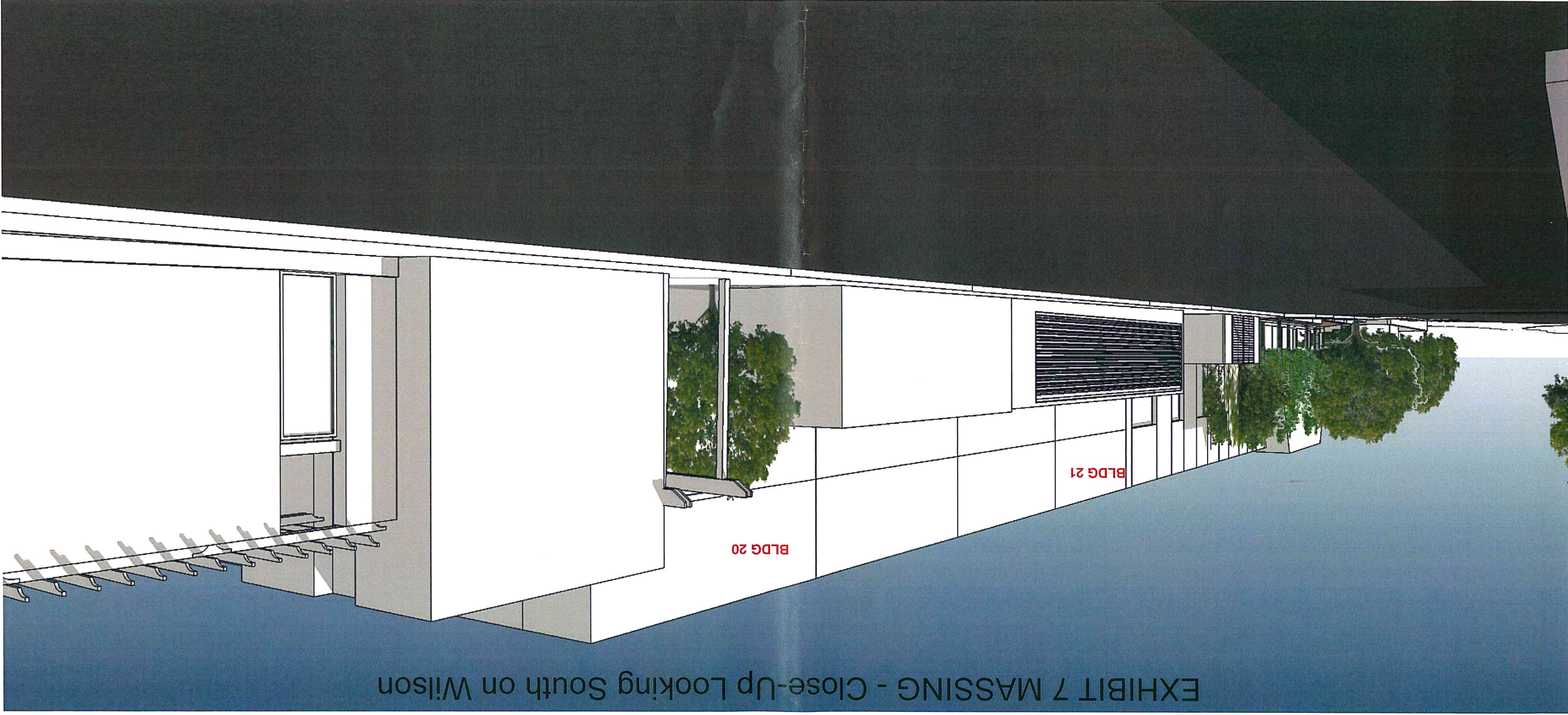


EXHIBIT 8 MASSING - Close-Up Looking North on Wilson

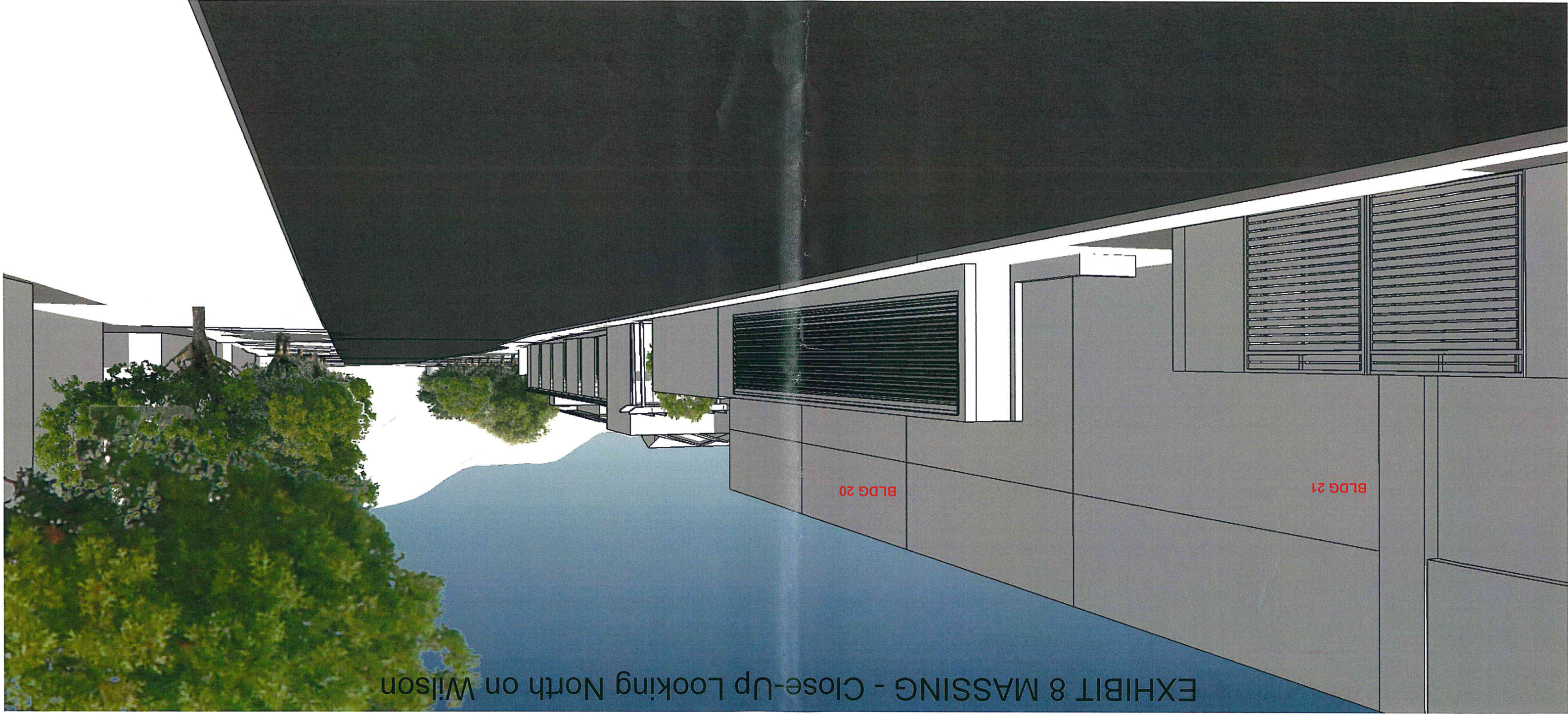
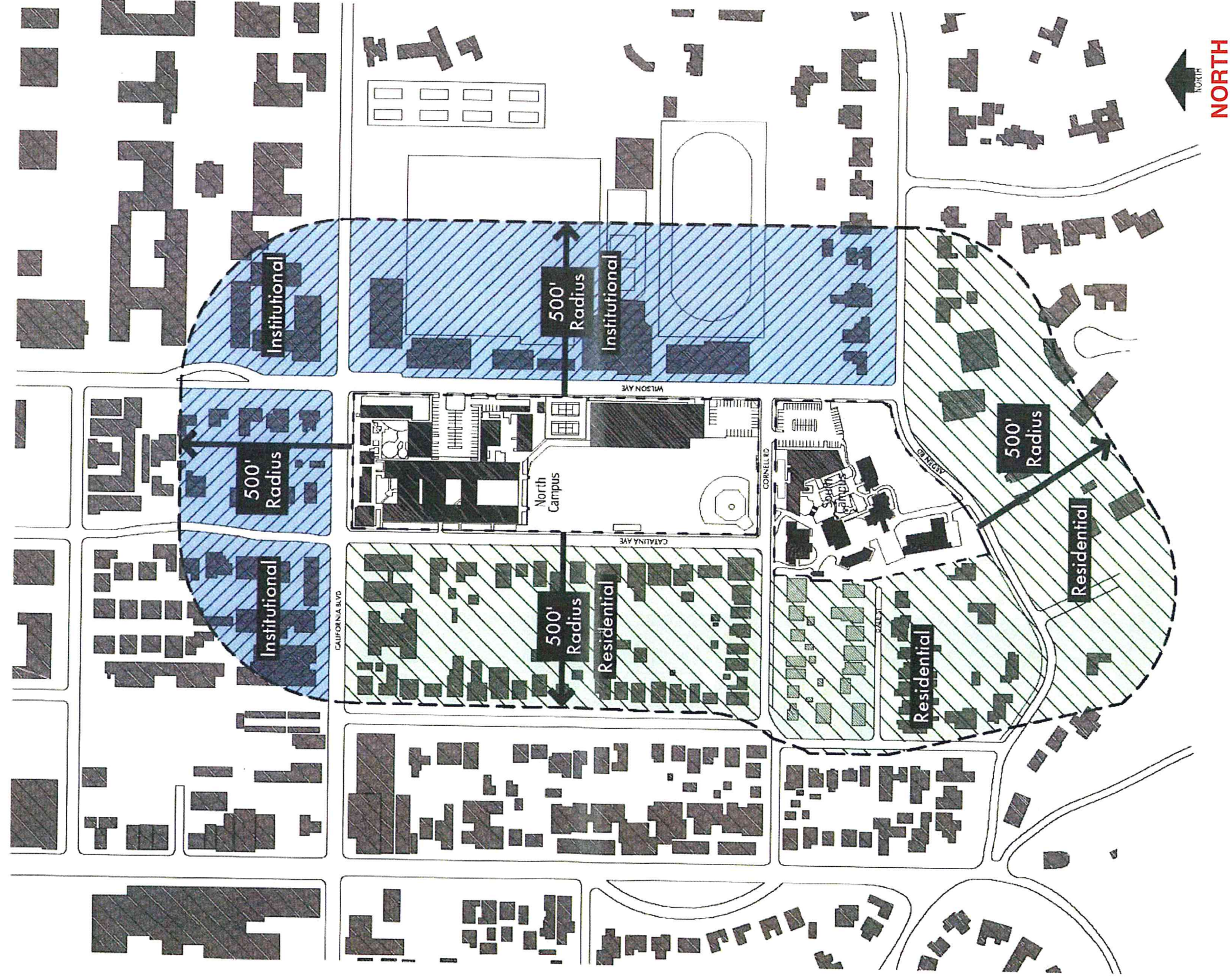


EXHIBIT 9 - ADJACENT ZONING
Polytechnic School
2015 Master Development Plan



**EXHIBIT 13 - TREE INVENTORY
AT DEVELOPMENT AREA
Polytechnic School
2015 Master Development Plan**

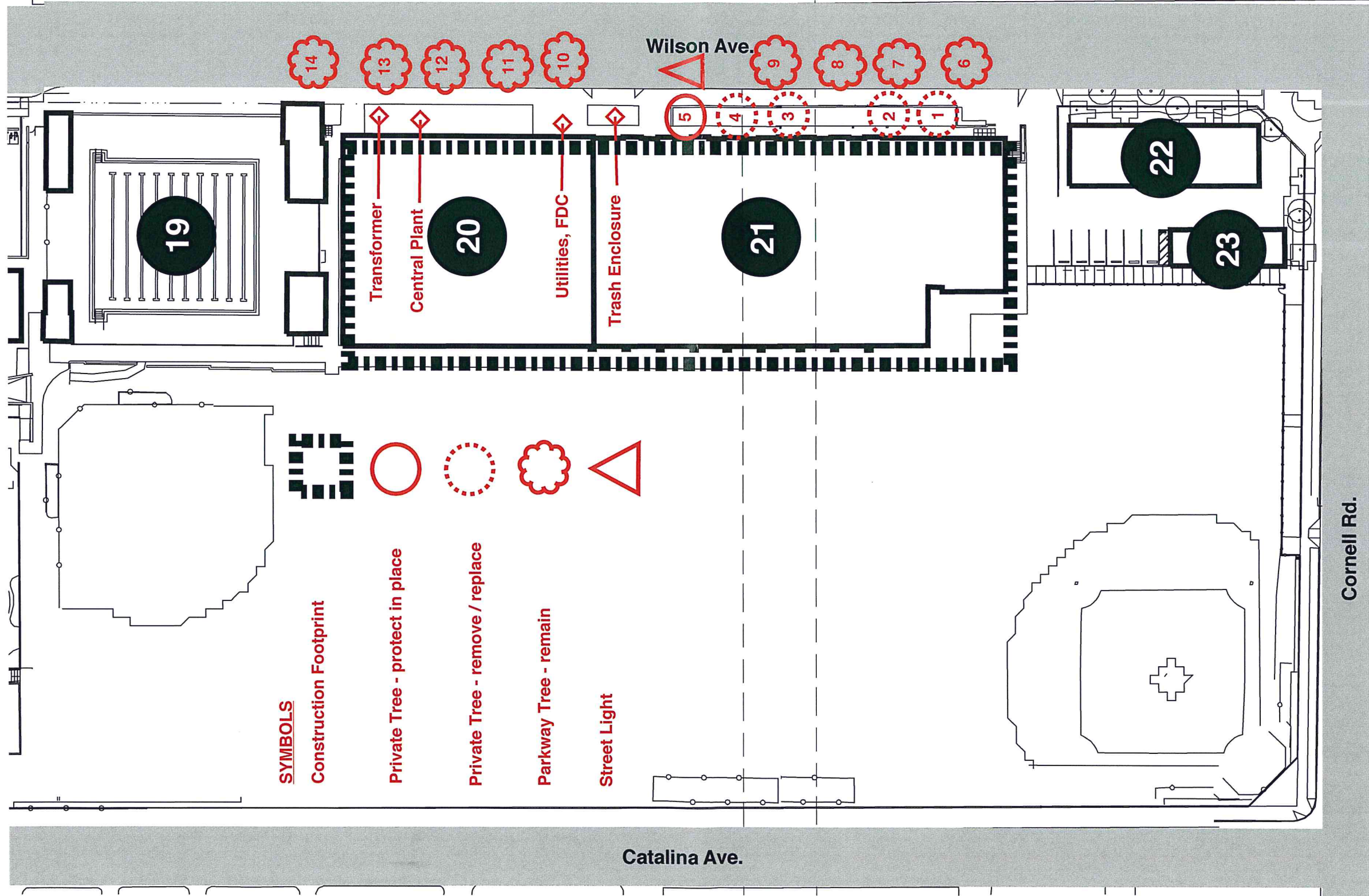
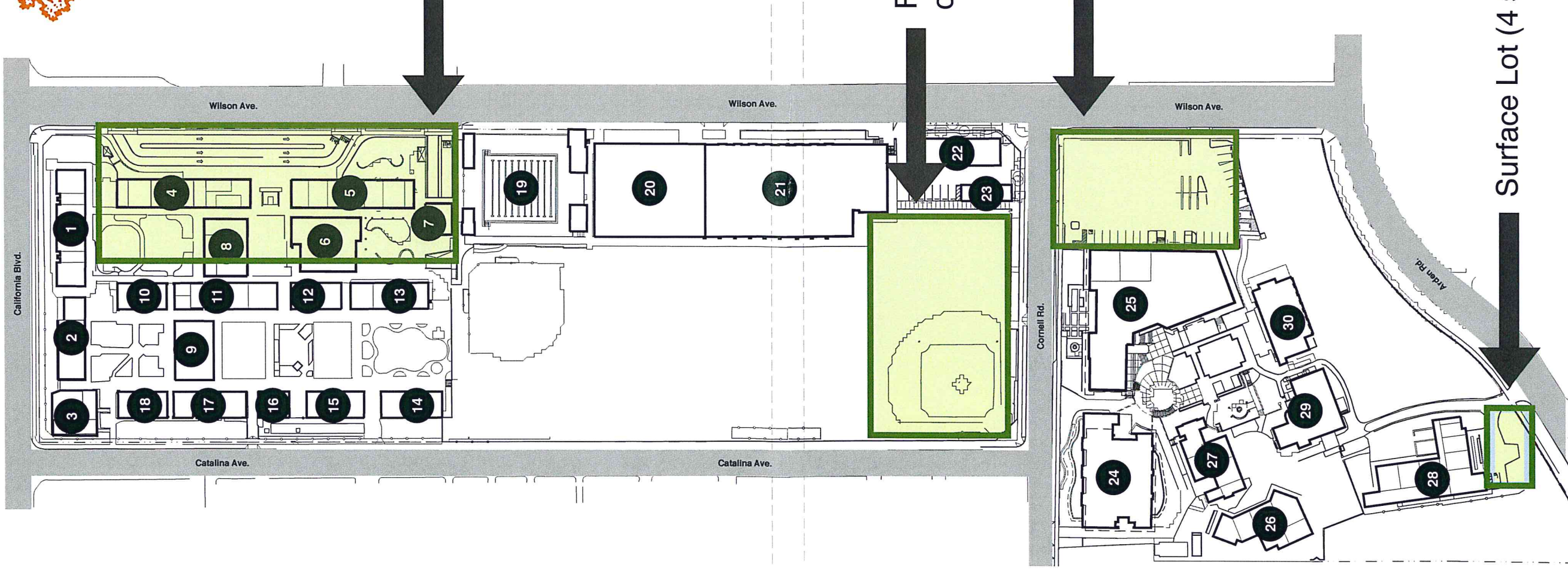




EXHIBIT 14 - Onsite Parking

Polytechnic School
2015 Master Development Plan



Entrance to underground parking garage (282 spaces)

Field parking for event overflow (100 cars)

Surface Lot (69 spaces)

Surface Lot (4 spaces)

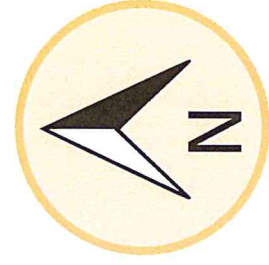




EXHIBIT 15 - Student Drop-off and Pick-up

Polytechnic School
2015 Master Development Plan

- 1** Primary location for Lower and Middle School
- 2** Kindergarten and certain Middle School families
- 3** Upper School

