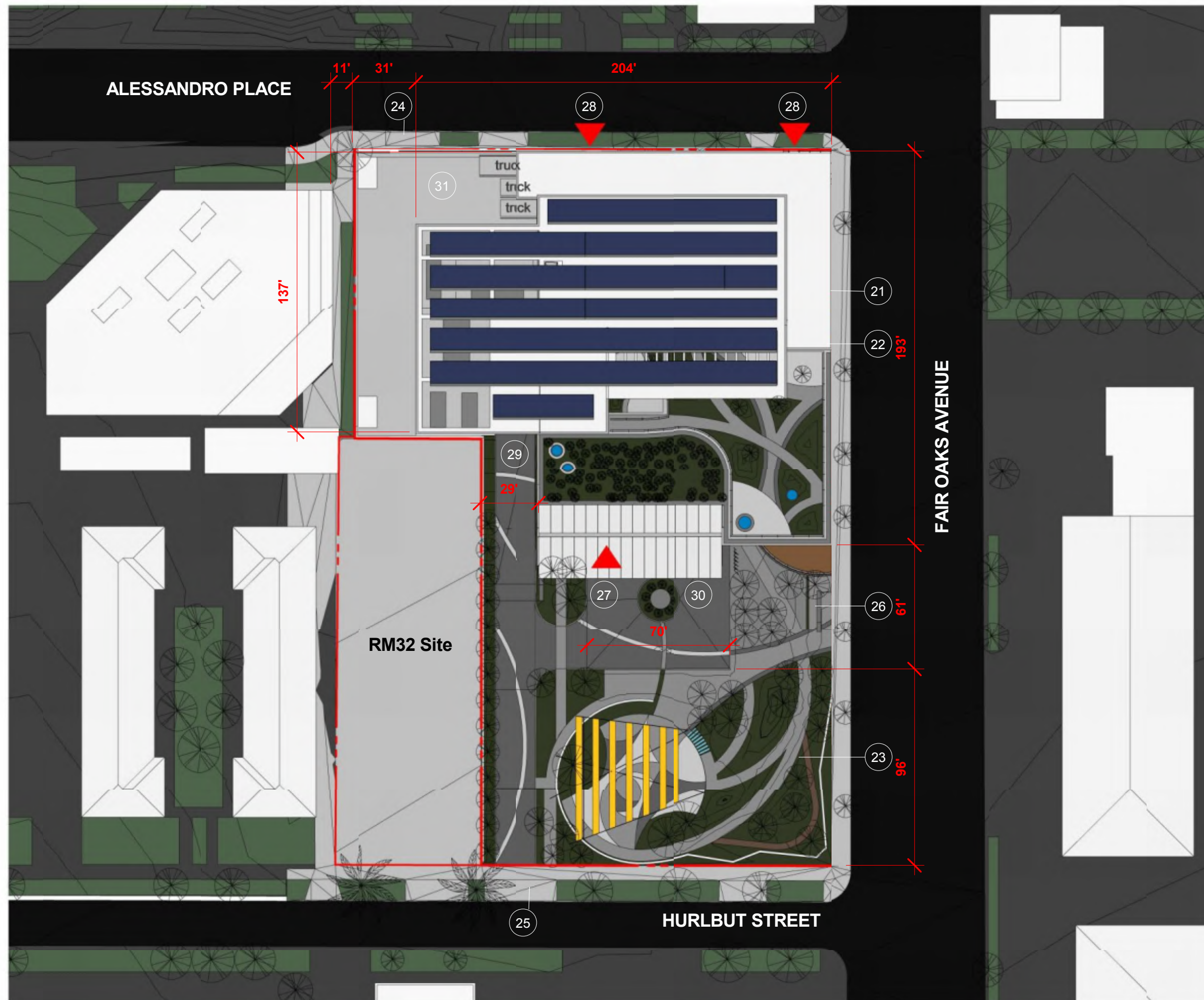




# **AMBULATORY SURGICAL CENTER & CLINICS**

SHRINERS HOSPITALS FOR CHILDREN

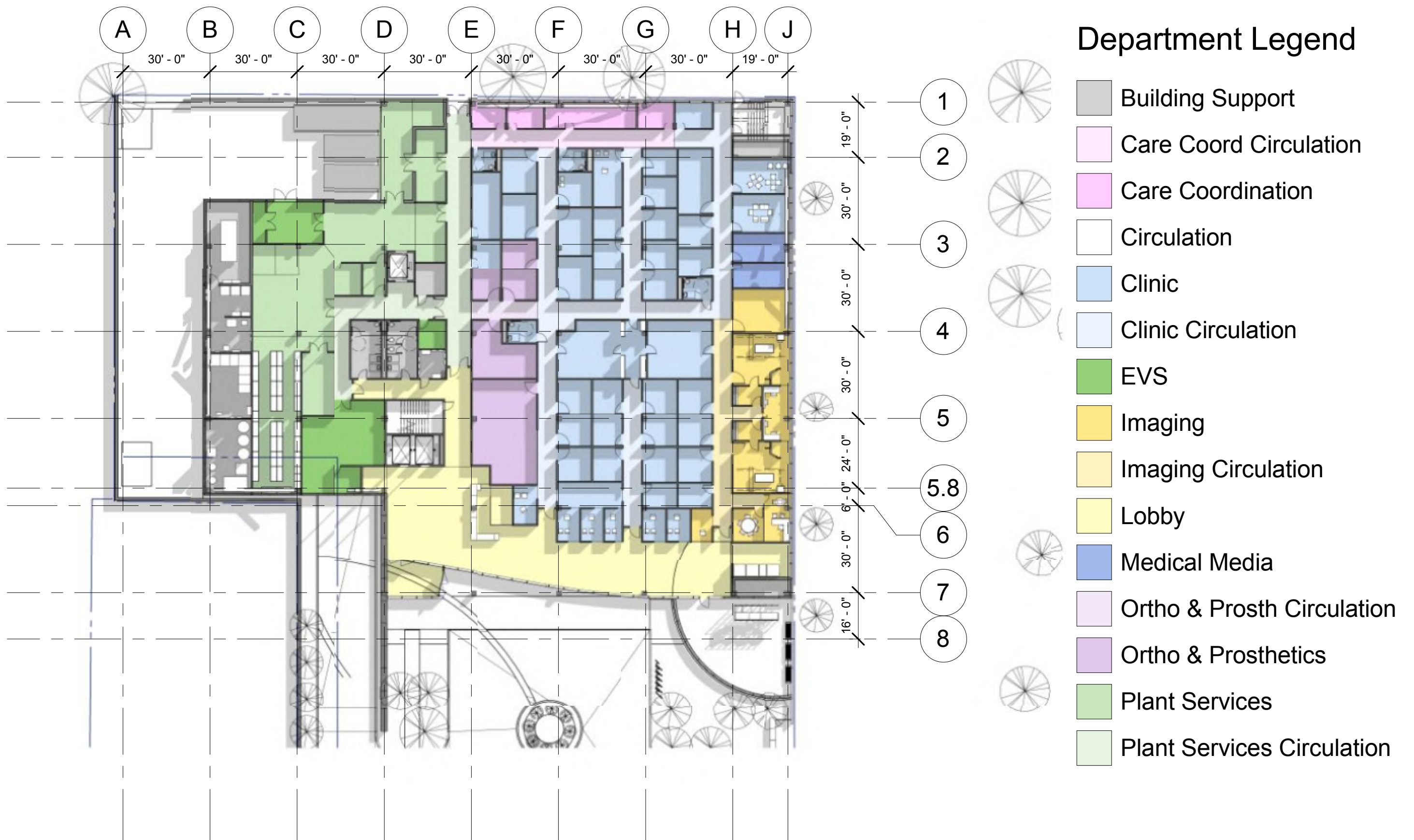
**PREDEVELOPMENT PLAN REVIEW SUBMITTAL**



**KEYNOTE LEGEND**

- 21 PROJECT SITE
- 22 BUILDING OUTLINE
- 23 LANDSCAPE
- 24 SERVICE ENTRY
- 25 VEHICULAR ENTRY
- 26 PEDESTRIAN ENTRY
- 27 FRONT DOOR
- 28 EXIT DOOR
- 29 RAMP DOWN TO GARAGE
- 30 VISITOR DROP OFF
- 31 SERVICE YARD

**SITE PLAN**








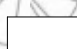

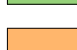
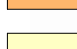
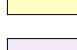



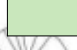

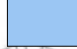
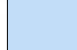

## Department Legend

- Building Support
- Care Coord Circulation
- Care Coordination
- Circulation
- Clinic
- Clinic Circulation
- EVS
- Imaging
- Imaging Circulation
- Lobby
- Medical Media
- Ortho & Prosth Circulation
- Ortho & Prosthetics
- Plant Services
- Plant Services Circulation

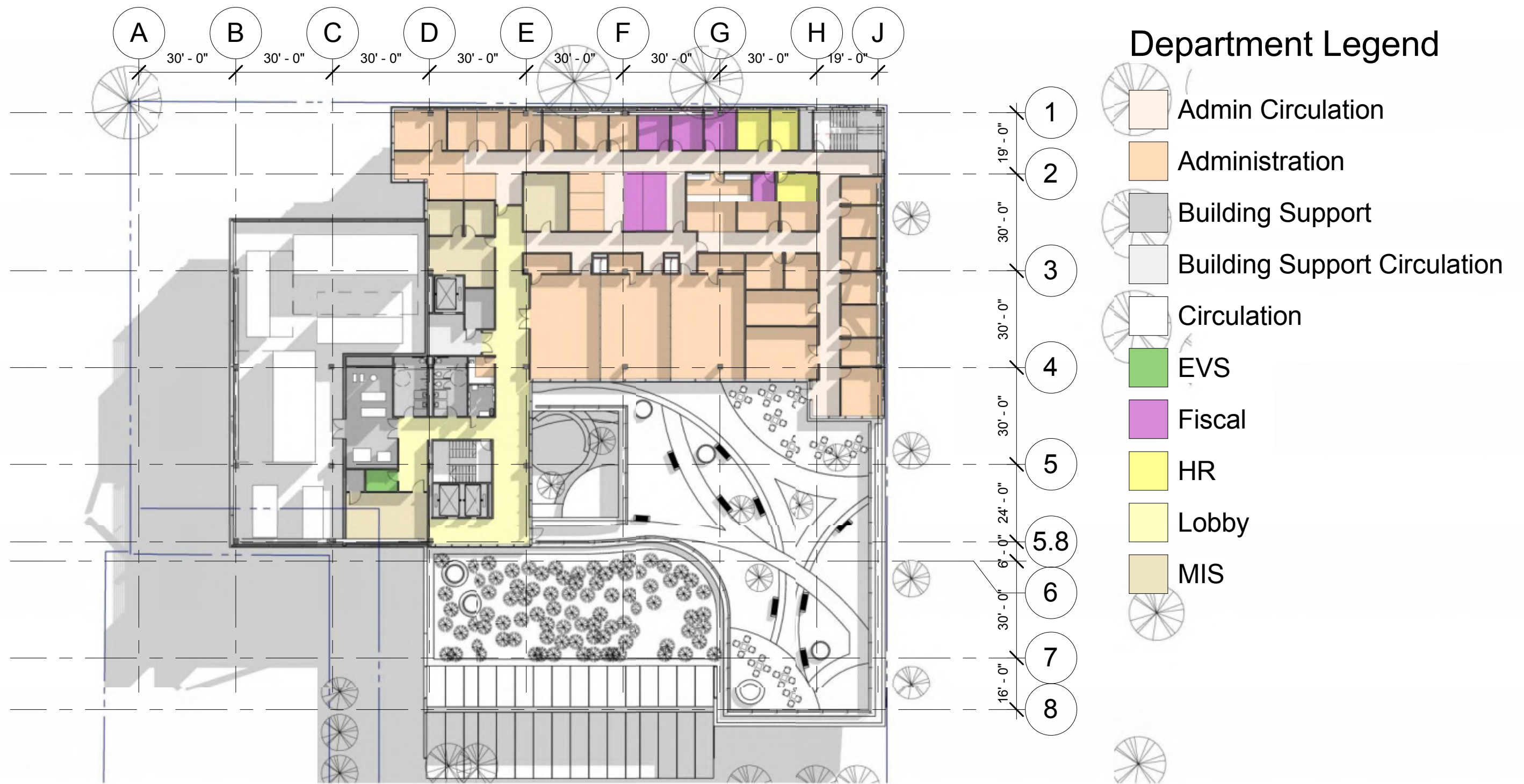
### BUILDING FLOOR PLAN - LEVEL 1



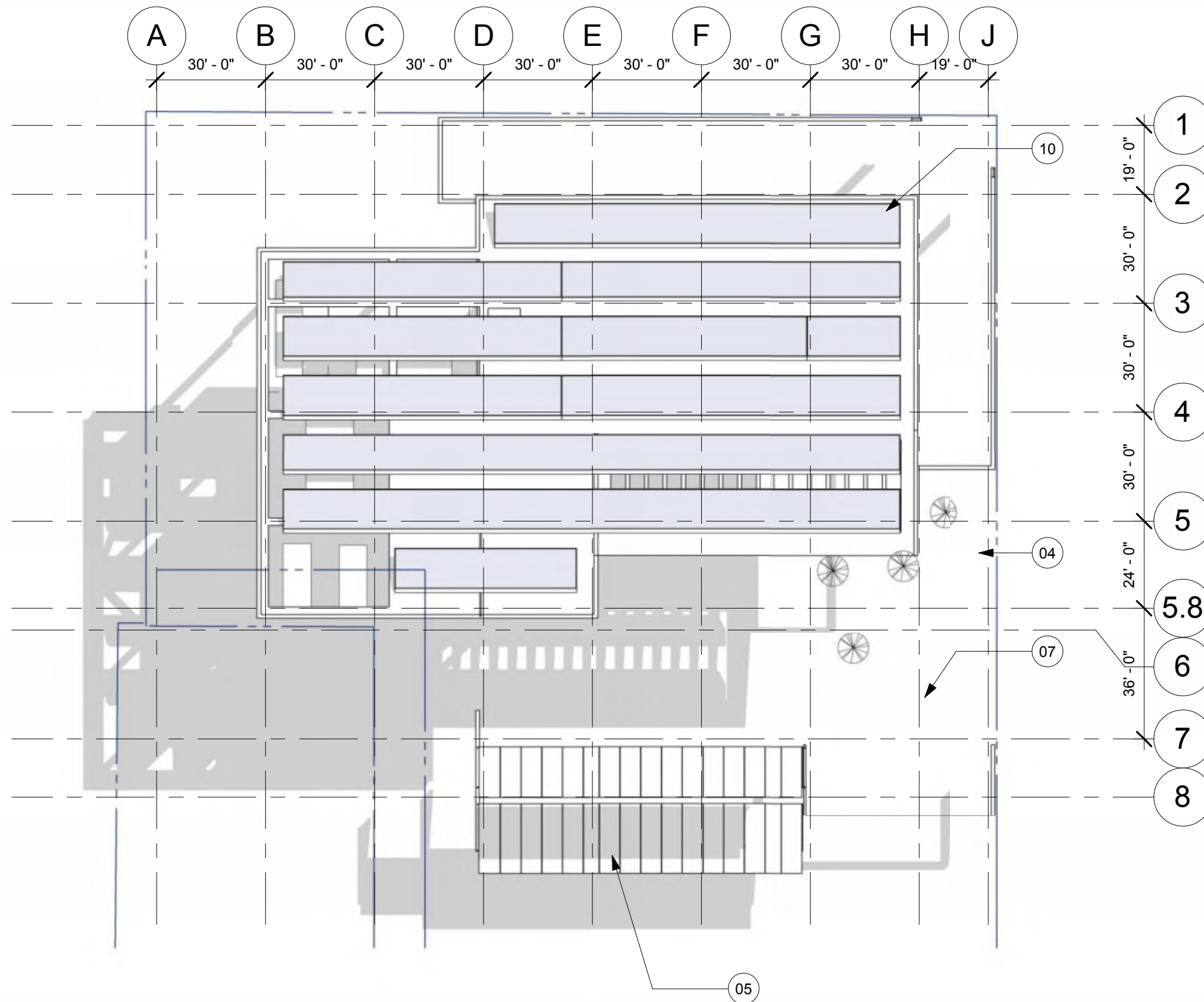
## Department Legend

-  Admin Circulation
-  Administration
-  Building Support
-  Building Support Circulation
-  Child Life
-  Circulation
-  EVS
-  HIS
-  Lobby
-  Ortho & Prosth Circulation
-  Ortho & Prosthetics
-  Pharmacy
-  Plant Services
-  Plant Services Circulation
-  Rehab
-  Rehab Circulation
-  Surgery
-  Surgery Circulation

## BUILDING FLOOR PLAN - LEVEL 2



### BUILDING FLOOR PLAN - LEVEL 3



**KEYNOTE LEGEND**

- 01 GLAZED ALUMINUM CURTAIN WALL
- 02 GRANITE VENEER
- 03 GLAZED ALUMINUM CURTAINWALL W/  
VERTICAL METAL SUNSHADES
- 04 DECORATIVE METAL RAILING
- 05 GLASS CANOPY
- 06 STEEL FENCE
- 07 INTENSIVE GREEN ROOF
- 08 OVERHEAD COILING DOOR
- 09 METAL LOUVERS
- 10 PV PANELS
- 11 GLAZED ALUMINUM CURTAINWALL W/  
HORIZONTAL METAL SUNSHADES

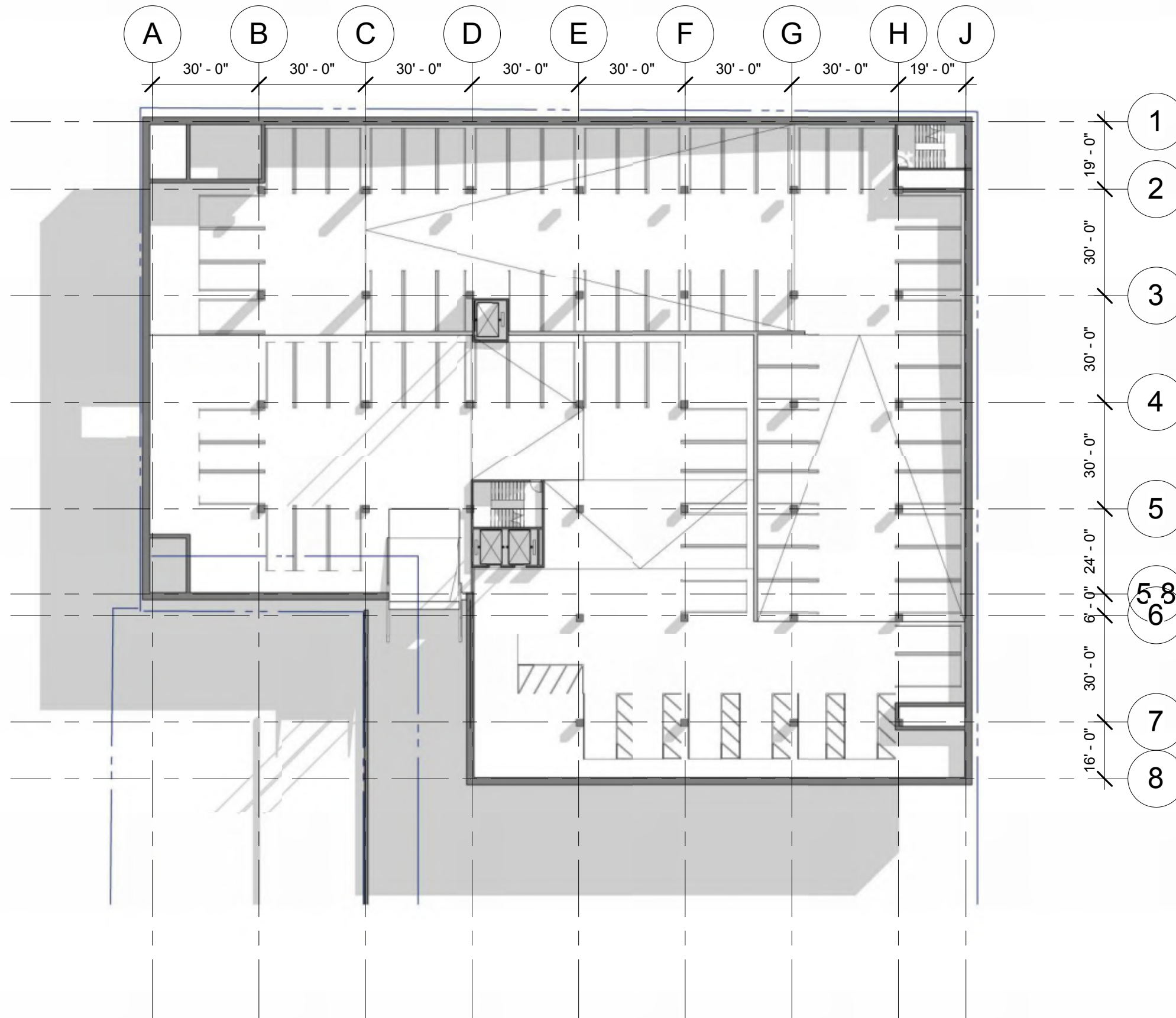
**BUILDING ROOF PLAN**

SHRINERS HOSPITALS FOR CHILDREN

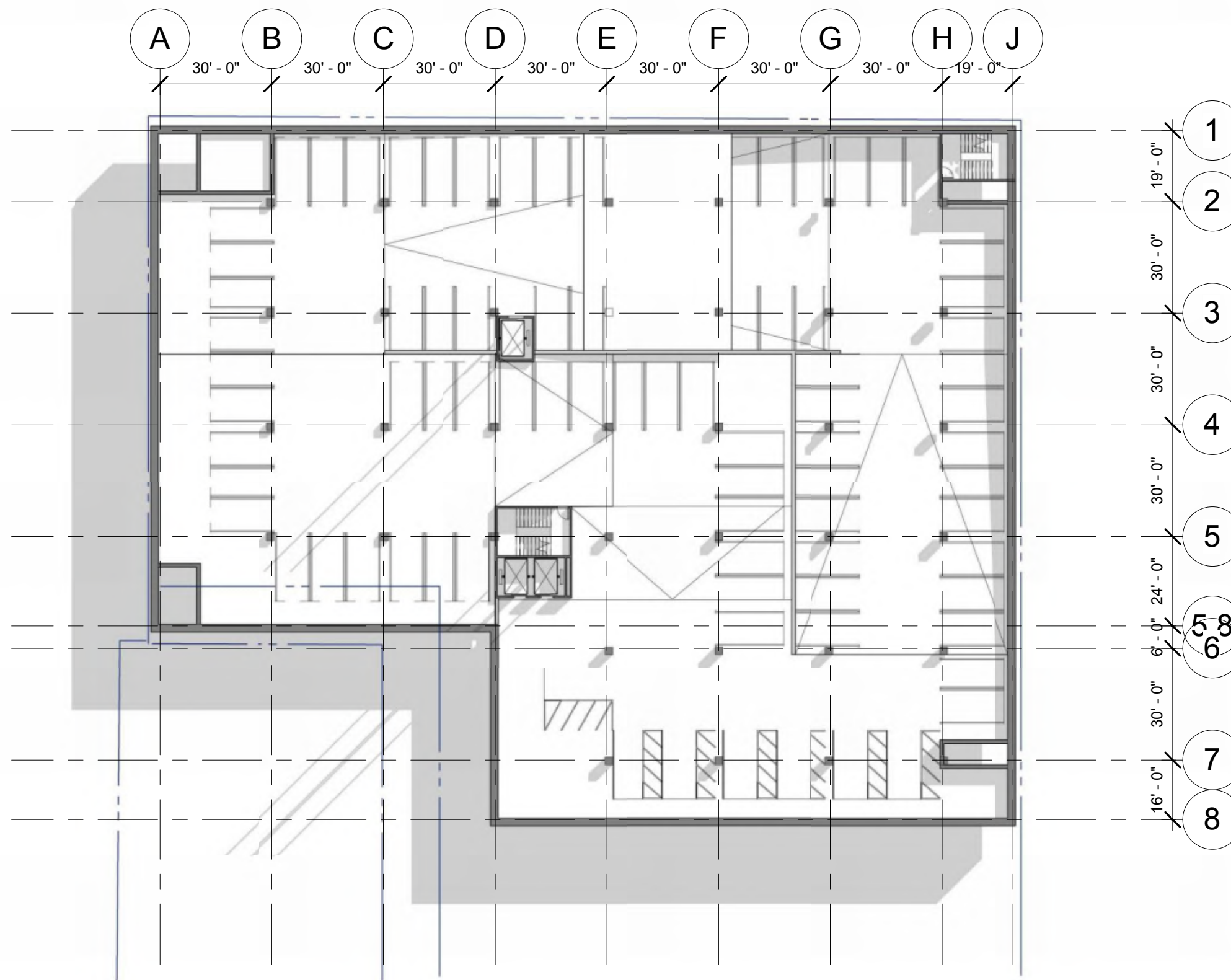
September 24, 2013

**Ambulatory Surgical Center & Clinics**



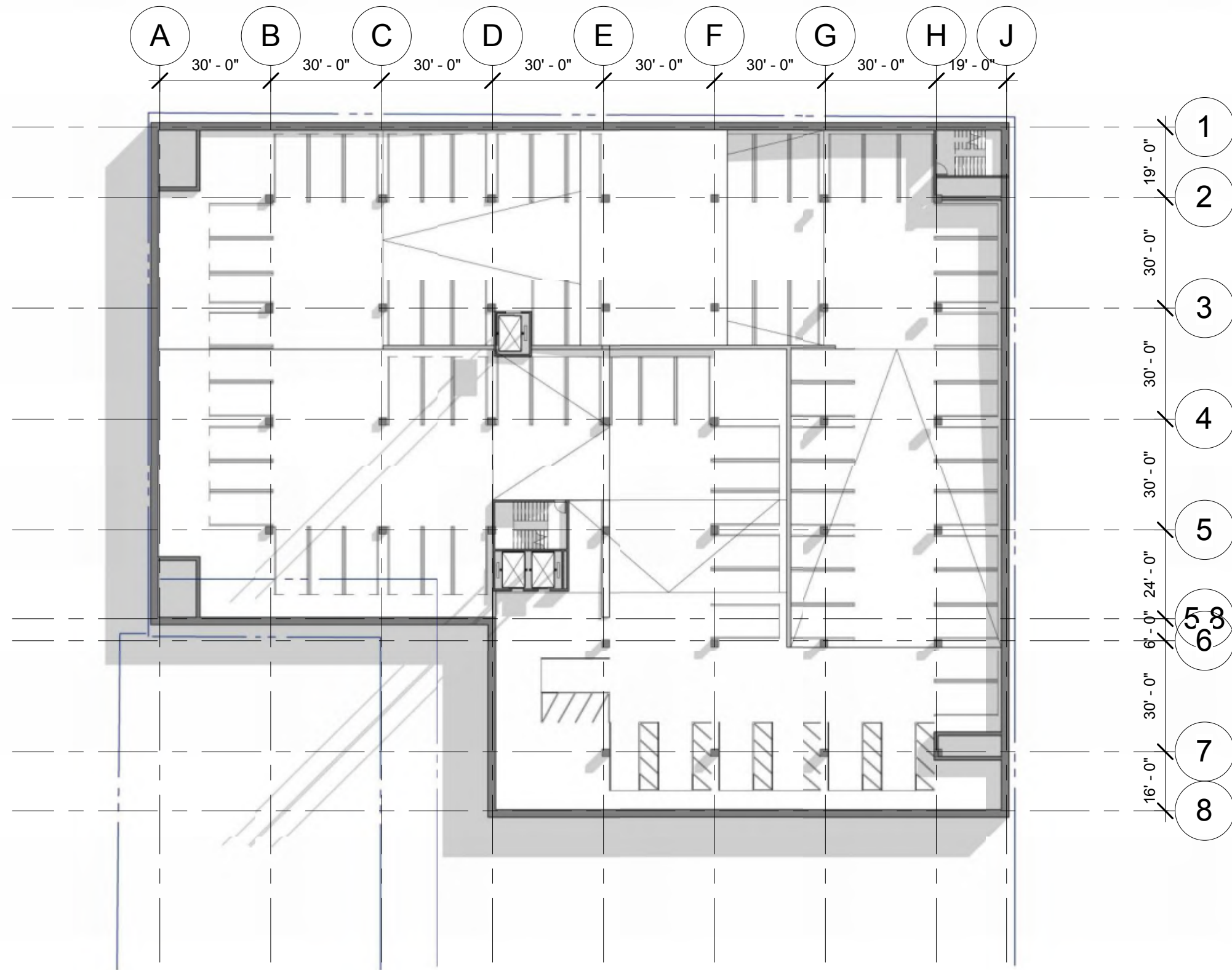


**GARAGE FLOOR PLAN - LEVEL -1**



## GARAGE FLOOR PLAN - LEVEL -2





**GARAGE FLOOR PLAN - LEVEL -3**

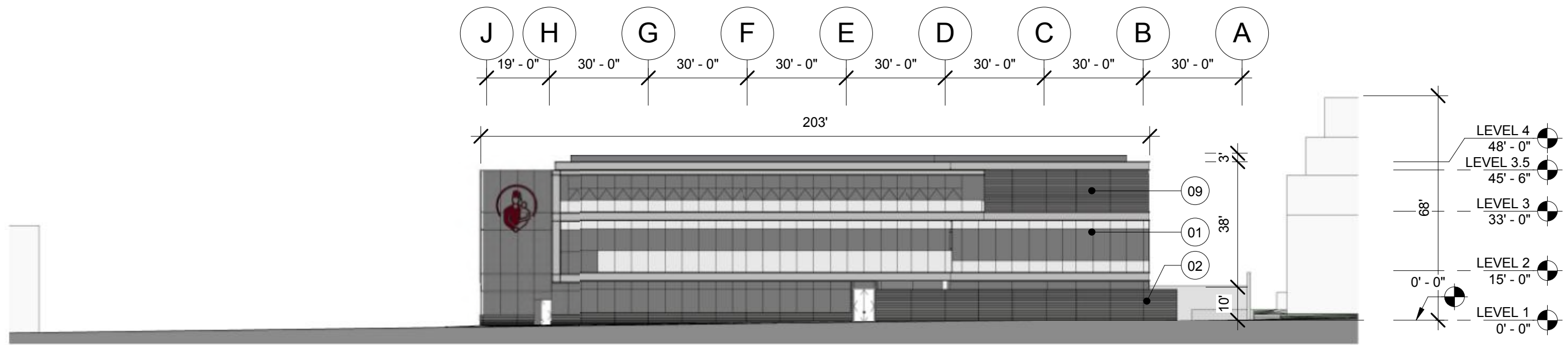


**1** EAST CONTEXT ELEVATION  
1/64" = 1'-0"



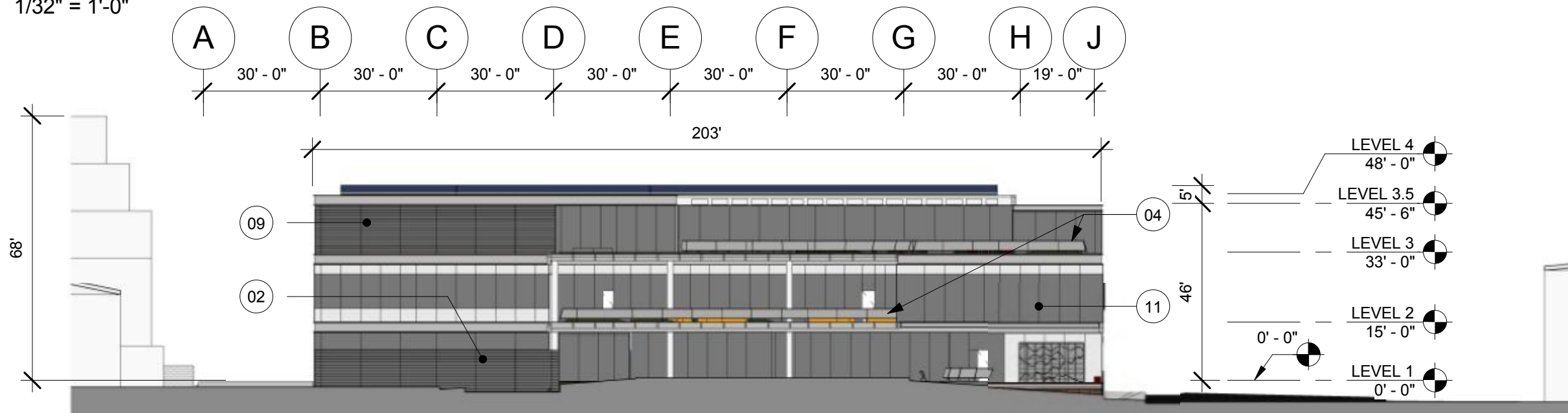
**2** NORTH CONTEXT ELEVATION  
1/64" = 1'-0"

## SITE CONTEXT ELEVATIONS



# 1 NORTH ELEVATION

1/32" = 1'-0"



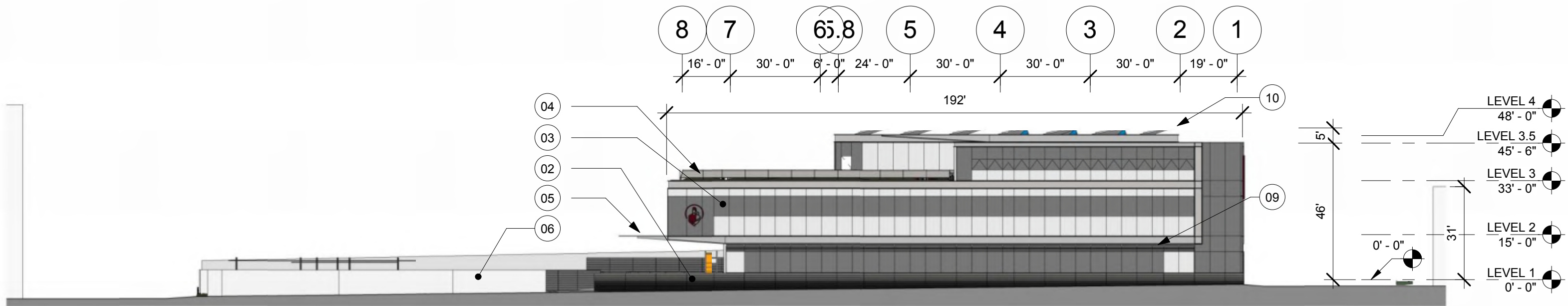
# 2 SOUTH ELEVATION

1/32" = 1'-0"

## KEYNOTE LEGEND

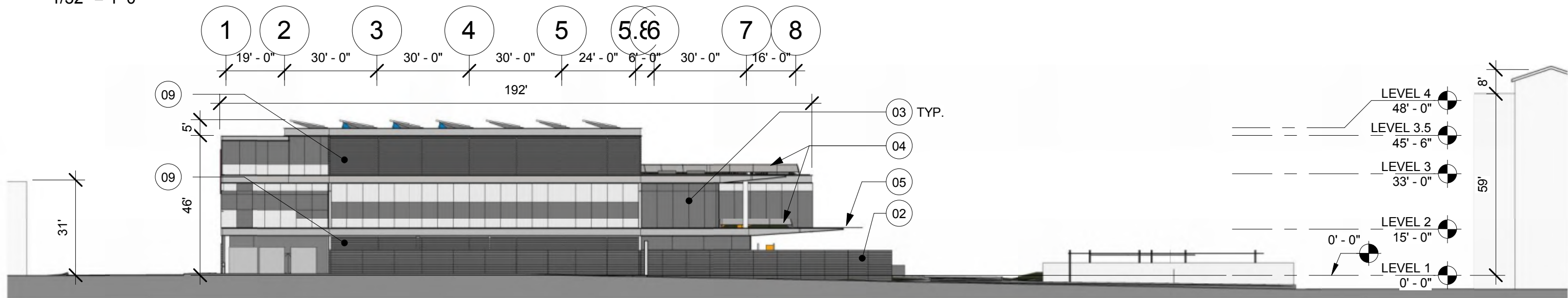
- |   |                          |   |
|---|--------------------------|---|
| 01 GLAZED ALUMINUM CURTAIN WALL                               | 05 GLASS CANOPY          | 09 METAL LOUVERS  |
| 02 GRANITE VENEER   | 06 STEEL FENCE           | 10 PV PANELS  |
| 03 GLAZED ALUMINUM CURTAINWALL W/<br>VERTICAL METAL SUNSHADES | 07 INTENSIVE GREEN ROOF  | 11 GLAZED ALUMINUM CURTAINWALL W/<br>HORIZONTAL METAL SUNSHADES |
| 04 DECORATIVE METAL RAILING                                   | 08 OVERHEAD COILING DOOR |   |

## BUILDING ELEVATIONS - NORTH AND SOUTH



# 1 EAST ELEVATION

1/32" = 1'-0"



# 2 WEST ELEVATION

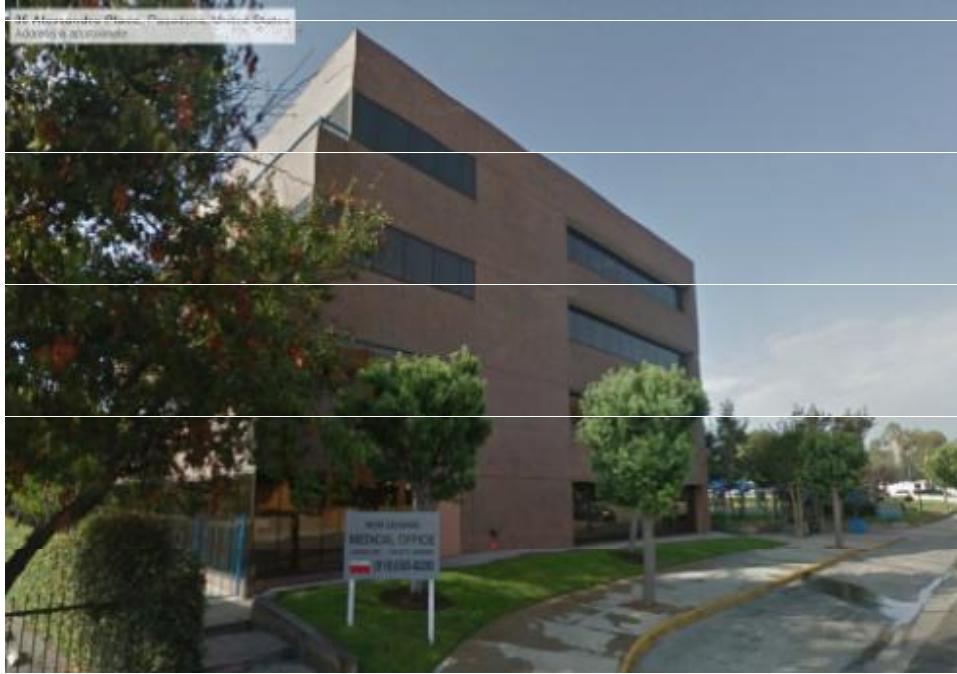
1/32" = 1'-0"

## KEYNOTE LEGEND

- |   |                          |   |
|---|--------------------------|---|
| 01 GLAZED ALUMINUM CURTAIN WALL                               | 05 GLASS CANOPY          | 09 METAL LOUVERS  |
| 02 GRANITE VENEER   | 06 STEEL FENCE           | 10 PV PANELS  |
| 03 GLAZED ALUMINUM CURTAINWALL W/<br>VERTICAL METAL SUNSHADES | 07 INTENSIVE GREEN ROOF  | 11 GLAZED ALUMINUM CURTAINWALL W/<br>HORIZONTAL METAL SUNSHADES |
| 04 DECORATIVE METAL RAILING                                   | 08 OVERHEAD COILING DOOR |   |

## BUILDING ELEVATIONS - EAST AND WEST





Alessandro Place



Alessandro Place



Alessandro Place



South Fair Oaks



838 South Fair Oaks



888 South Fair Oaks



951 South Fair Oaks



951 South Fair Oaks



RM32 Site - Hurlbut Street



RM32 Site - Hurlbut Street



915 South Fair Oaks



915 South Fair Oaks



915 South Fair Oaks



915 South Fair Oaks





915 - 909 South Fair Oaks



909 South Fair Oaks



909 South Fair Oaks



909 South Fair Oaks



909 South Fair Oaks



909 South Fair Oaks



905 South Fair Oaks



905 South Fair Oaks