

ATTACHMENT B

EVOLVING DEMOGRAPHICS IN PASADENA

EVOLVING DEMOGRAPHICS IN PASADENA

ANNA JACOBSEN

I. EMERGING PATTERNS IN AGE

Exhibit I: Population Growth or Decline by Age Group

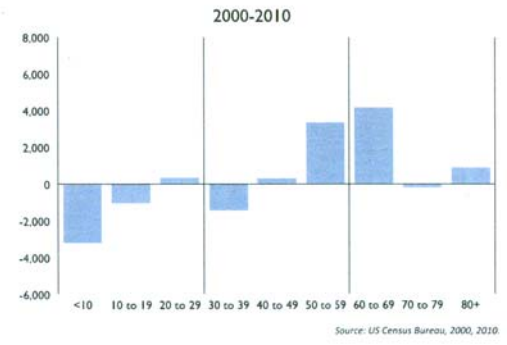
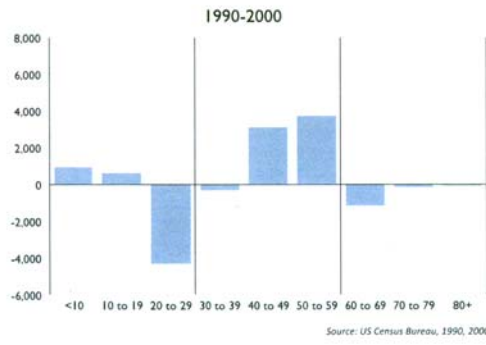
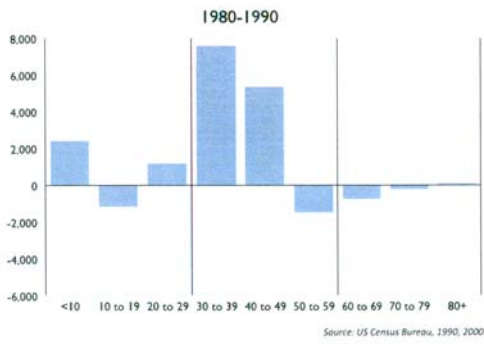
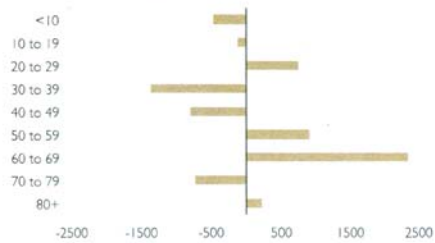
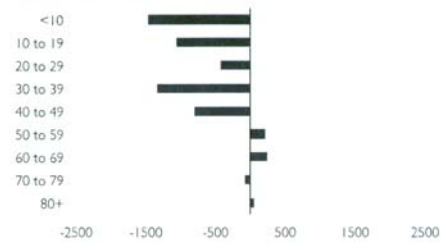


Exhibit 2: Numeric Growth or Decline by Race/Ethnicity and Age Group, 2000-2010

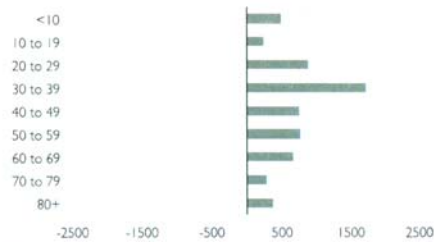
NH White (Total Pop. 53,135)



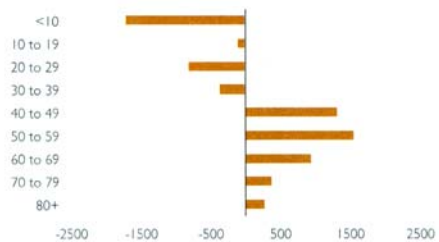
Black (Total Pop. 14,650)



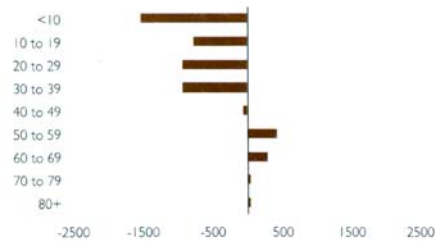
Asian (Total Pop. 19,729)



Latino (Total Pop. 46,174)



Other (Total Pop. 26,193)



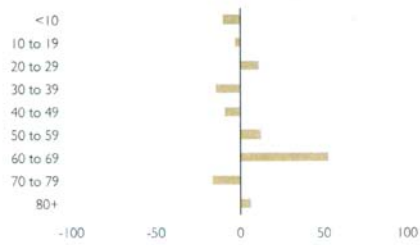
Note: The U.S. Census Bureau defines Hispanic/Latino origin as a related but distinct characteristic from race. Available data on particular subjects by race and ethnicity can vary by Census table. This results in double counting for persons of Hispanic origin in exhibits 2-5 and 7-9. While persons of Hispanic/Latino origin are removed from the White category, they appear once in the Asian, Black, and Other categories and again in the tabulation of persons of Hispanic/Latino origin. Exhibits 11-40, however, offer unduplicated counts for these categories.

In each of the Race/Ethnicity exhibits the Other category refers to persons who fall under the American Indian, Other, or Two or More Races Census categories.

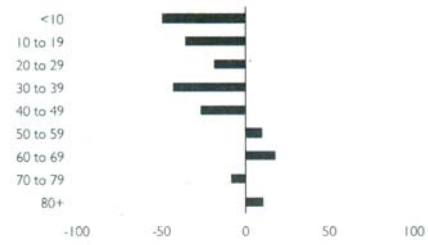
Source: US Census Bureau, 2000 and 2010

Exhibit 3: Percent Growth or Decline by Race/Ethnicity and Age Group, 2000-2010

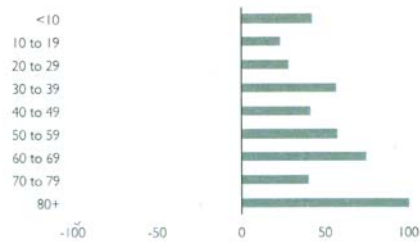
White



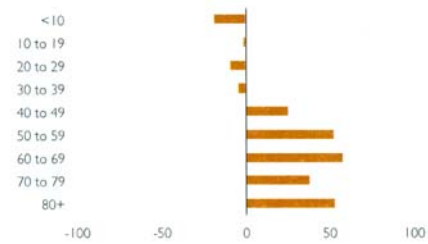
Black



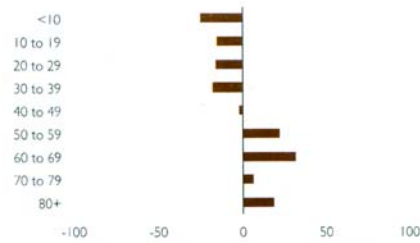
Asian



Latino



Other



Source: US Census Bureau, 2000 and 2010

Exhibit 4: Population Changes by Race/Ethnicity and Age Group, 2000 - 2010

NH WHITE	2000	2010	2000 - 2010 Change (#)	2000-2010 Change (%)
<10	4,493	4,032	-461	-10.3
10 to 19	3,599	3,483	-116	-3.2
20 to 29	6,798	7,546	748	11.0
30 to 39	9,259	7,888	-1,371	-14.8
40 to 49	8,556	7,754	-802	-9.4
50 to 59	7,289	8,198	909	12.5
60 to 69	4,462	6,807	2,345	52.6
70 to 79	4,420	3,698	-722	-16.3
80+	3,505	3,729	224	6.4
Total	52,381	53,135	754	1.4

BLACK	2000	2010	2000 - 2010 Change (#)	2000-2010 Change (%)
<10	2,970	1,495	-1,475	-49.7
10 to 19	2,992	1,932	-1,060	-35.4
20 to 29	2,271	1,844	-427	-18.8
30 to 39	3,122	1,779	-1,343	-43.0
40 to 49	3,000	2,205	-795	-26.5
50 to 59	2,083	2,295	212	10.2
60 to 69	1,325	1,564	239	18.0
70 to 79	973	892	-81	-8.3
80+	583	644	61	10.5
Total	19,319	14,650	-4,669	-24.2

ASIAN/PACIFIC ISL.	2000	2010	2000 - 2010 Change (#)	2000-2010 Change (%)
<10	1,156	1,650	494	42.7
10 to 19	1,061	1,310	249	23.5
20 to 29	3,158	4,045	887	28.1
30 to 39	3,025	4,747	1,722	56.9
40 to 49	1,818	2,574	756	41.6
50 to 59	1,325	2,085	760	57.4
60 to 69	887	1,553	666	75.1
70 to 79	732	1,025	293	40.0
80+	369	740	371	100.5
Total	13,531	19,729	6,198	45.8

LATINO	2000	2010	2000 - 2010 Change (#)	2000-2010 Change (%)
<10	9,090	7,370	-1,720	-18.9
10 to 19	7,396	7,286	-110	-1.5
20 to 29	8,706	7,891	-815	-9.4
30 to 39	8,233	7,869	-364	-4.4
40 to 49	5,204	6,518	1,314	25.2
50 to 59	2,956	4,505	1,549	52.4
60 to 69	1,626	2,561	935	57.5
70 to 79	1,009	1,390	381	37.8
80+	514	784	270	52.5
Total	44,734	46,174	1,440	3.2

OTHER	2000	2010	2000 - 2010 Change (#)	2000-2010 Change (%)
<10	6,192	4,671	-1,521	-24.6
10 to 19	5,071	4,297	-774	-15.3
20 to 29	5,918	4,990	-928	-15.7
30 to 39	5,319	4,389	-930	-17.5
40 to 49	3,519	3,457	-62	-1.8
50 to 59	1,884	2,301	417	22.1
60 to 69	914	1,205	291	31.8
70 to 79	551	588	37	6.7
80+	249	295	46	18.5
Total	29,617	26,193	-3,424	-11.6

Source: US Census Bureau, 2000 and 2010

Exhibit 5: Population Changes by Race/Ethnicity and Age Group as Compared to Other Jurisdictions, 2000 - 2010

ALL RACES	Pasadena	LA County	Glendale	LA City	Pomona	Santa Monica
<10 yrs	-17	-17	-22	-17	-21	-1
10-19 yrs	-7	2	-11	1	-8	11
20-29 yrs	1	2	4	1	3	18
30-39 yrs	-6	-10	-20	-7	-11	-9
40-49 yrs	2	5	-6	6	3	-6
50-59 yrs	24	34	29	32	48	19
60-69 yrs	49	37	26	34	44	51
70-79 yrs	-2	1	4	-3	13	-3
80+	18	29	18	24	21	13
Total	2	3	-2	3	0	7

NHWHITE	Pasadena	LA County	Glendale	LA City	Pomona	Santa Monica
<10 yrs	-10	-25	-6	-12	-48	-2
10-19 yrs	-3	-15	-3	-8	-47	9
20-29 yrs	11	8	45	13	2	24
30-39 yrs	-15	-27	-8	-14	-46	-15
40-49 yrs	-9	-16	1	-10	-41	-11
50-59 yrs	12	11	41	12	3	15
60-69 yrs	53	23	30	26	9	56
70-79 yrs	-16	-20	4	-19	-35	-10
80+	6	8	14	11	-21	8
Total	1	-8	12	-1	-26	4

BLACK	Pasadena	LA County	Glendale	LA City	Pomona	Santa Monica
<10 yrs	-50	-32	-31	-34	-50	7
10-19 yrs	-35	-14	14	-18	-36	-1
20-29 yrs	-19	0	-4	-5	-8	19
30-39 yrs	-43	-29	-26	-29	-45	-14
40-49 yrs	-27	-4	4	-10	-25	12
50-59 yrs	10	28	70	25	2	24
60-69 yrs	18	18	110	7	14	40
70-79 yrs	-8	12	47	-7	24	38
80+	10	19	70	1	31	4
Total	-24	-8	4	-12	-24	11

ASIAN/PI	Pasadena	LA County	Glendale	LA City	Pomona	Santa Monica
<10 yrs	43	-8	-20	-10	-18	-62
10-19 yrs	23	-1	-9	-4	-37	-70
20-29 yrs	28	13	-10	11	19	-33
30-39 yrs	57	9	-12	20	21	37
40-49 yrs	42	8	-8	5	3	-19
50-59 yrs	57	52	28	36	91	-11
60-69 yrs	75	64	47	48	123	22
70-79 yrs	40	33	46	19	120	22
80+	101	91	53	68	156	103
Total	46	18	0	15	17	-25

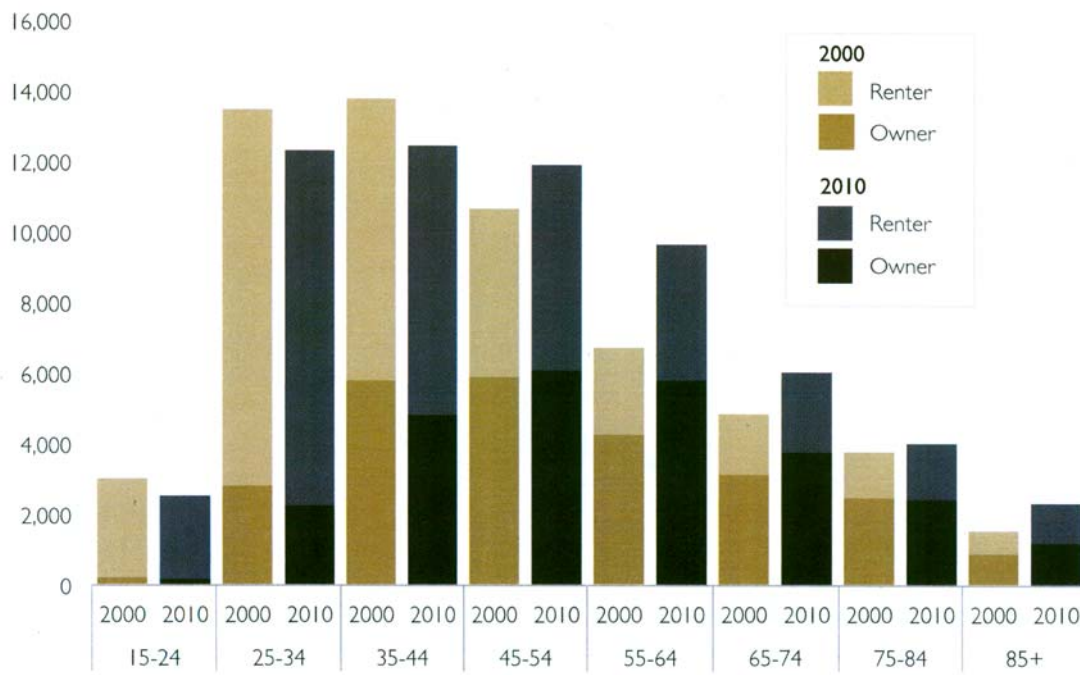
LATINO	Pasadena	LA County	Glendale	LA City	Pomona	Santa Monica
<10 yrs	-19	-13	-35	-17	-14	-16
10-19 yrs	-1	13	-9	9	7	5
20-29 yrs	-9	-2	-25	-5	3	-3
30-39 yrs	-4	1	-29	-1	-2	-7
40-49 yrs	25	31	5	28	29	6
50-59 yrs	52	65	20	67	84	32
60-69 yrs	58	60	25	61	71	25
70-79 yrs	38	35	9	35	56	17
80+	53	85	49	75	110	55
Total	3	11	-13	7	9	4

OTHER	Pasadena	LA County	Glendale	LA City	Pomona	Santa Monica
<10 yrs	-25	-22	-49	-23	-30	-5
10-19 yrs	-15	-3	-41	-5	-17	2
20-29 yrs	-16	-12	-45	-13	-15	-14
30-39 yrs	-17	-12	-51	-12	-20	-19
40-49 yrs	-2	9	-40	9	2	-14
50-59 yrs	22	40	-22	43	49	23
60-69 yrs	32	39	-27	40	37	15
70-79 yrs	7	15	-41	16	23	2
80+	18	43	-10	42	59	31
Total	-12	-5	-42	-5	-13	-6

Source: US Census Bureau, 2000 and 2010

II. HOUSING AND HOUSEHOLD FORMATION

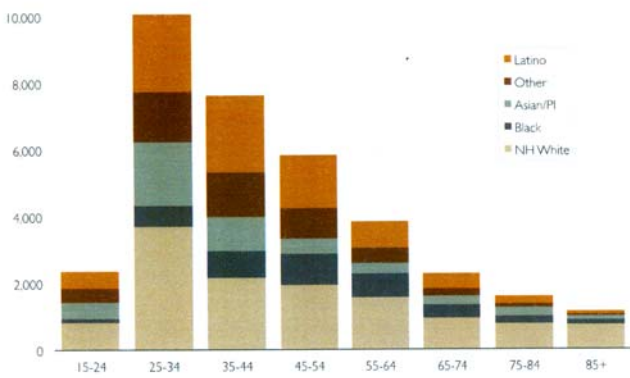
Exhibit 6: Tenure by Age of Householder, 2000 and 2010



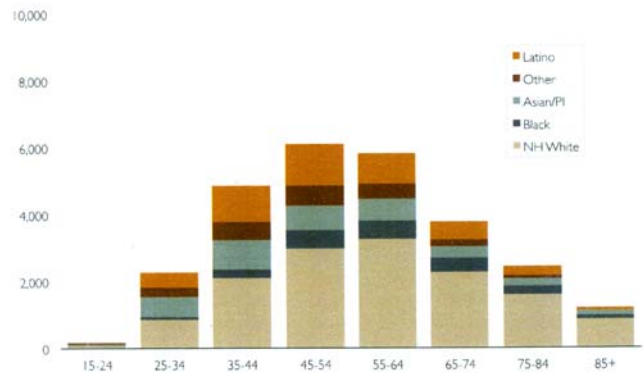
Source: US Census Bureau, 2000 and 2010

Exhibit 7: Racial Composition by Age of Householder, 2010

Renter Households

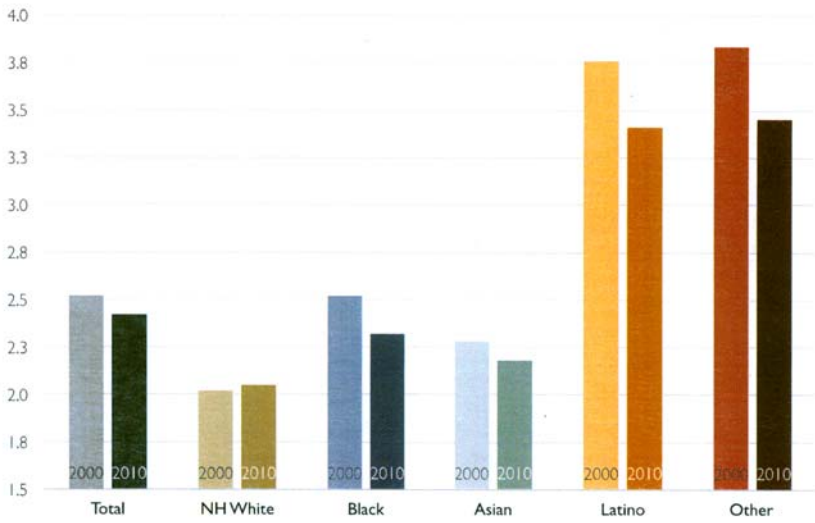


Owner Households



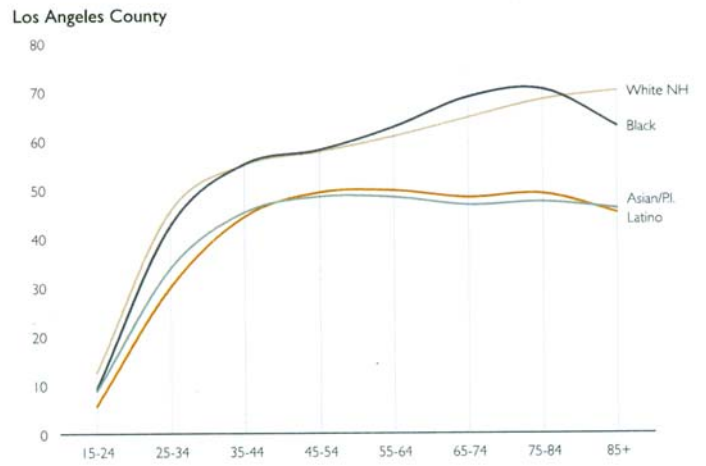
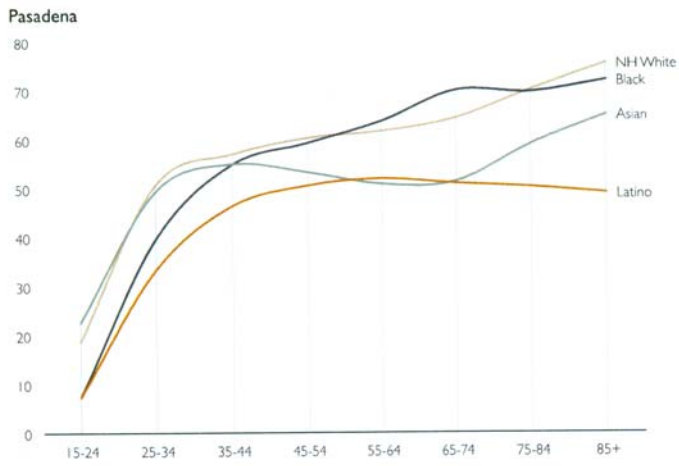
Source: US Census Bureau, 2010

Exhibit 8: Average Household Size by Race/Ethnicity, 2000 and 2010



Source: US Census Bureau, 2000 and 2010

Exhibit 9: Headship Percent Per Capita, 2010



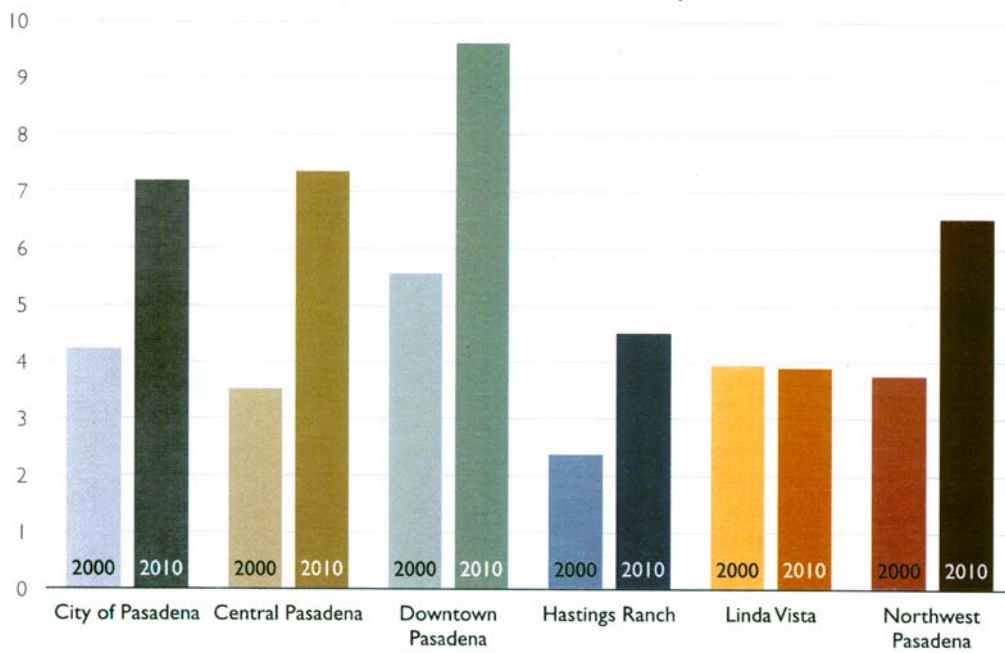
Source: US Census Bureau, 2010

III. A CLOSER LOOK AT SOME AREAS OF THE CITY

EVOLVING DEMOGRAPHICS IN PASADENA

ANNA JACOBSEN

Exhibit 10: Comparison of Vacancy Rates in Pasadena and Five Areas of the City, 2000 and 2010



CENTRAL PASADENA

Exhibit 11: Population by Age Group, 2000 and 2010

Central Pasadena

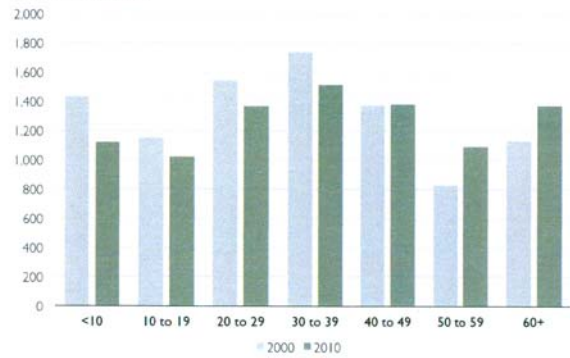


Exhibit 12: Age of Householder, 2000 and 2010

Central Pasadena

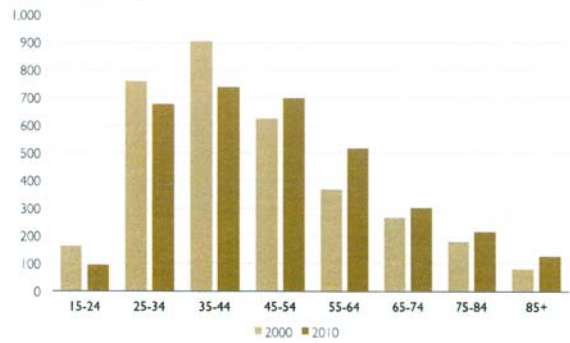


Exhibit 13: Numeric Growth or Decline by Age Group, 2000 - 2010

Central Pasadena

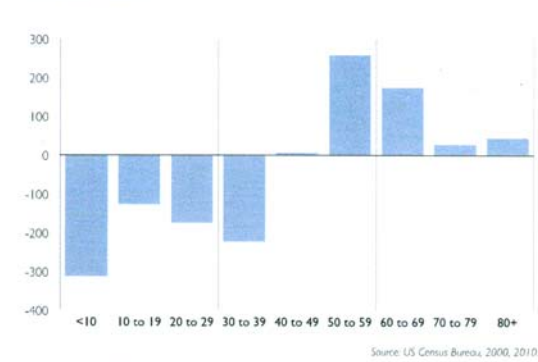
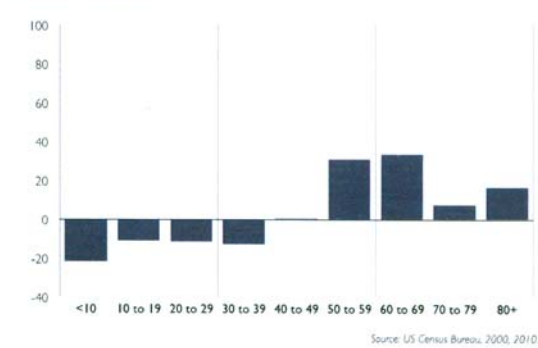


Exhibit 14: Percent Growth or Decline by Age Group, 2000 - 2010

Central Pasadena



CENTRAL PASADENA

Exhibit 14: Population by Race/Ethnicity, 2000 and 2010
Central Pasadena

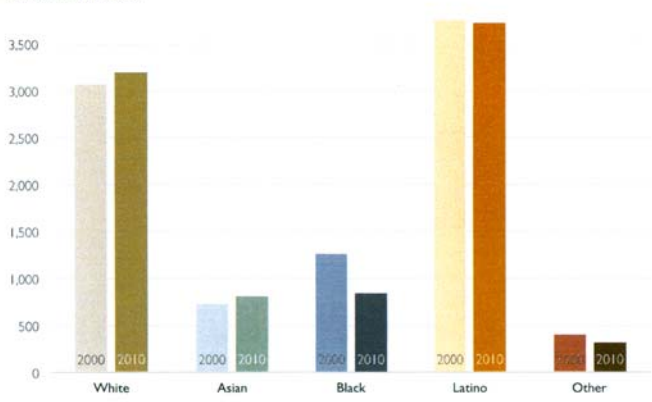
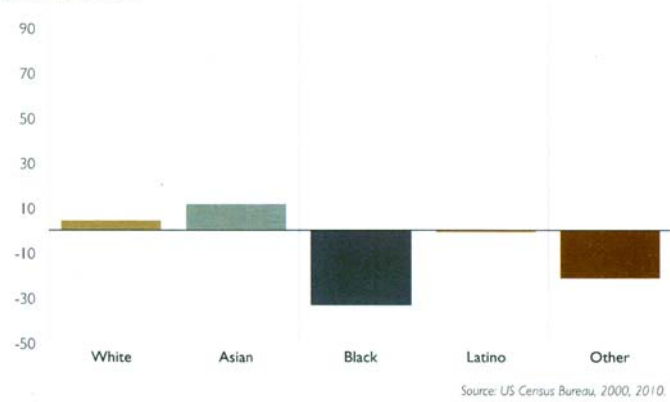


Exhibit 16: Percent Growth or Decline by Race/Ethnicity, 2000 to 2010
Central Pasadena



Source: US Census Bureau, 2000, 2010.

Total Pop: 9,209

DOWNTOWN PASADENA

Exhibit 17: Population by Age Group, 2000 and 2010
Downtown Pasadena

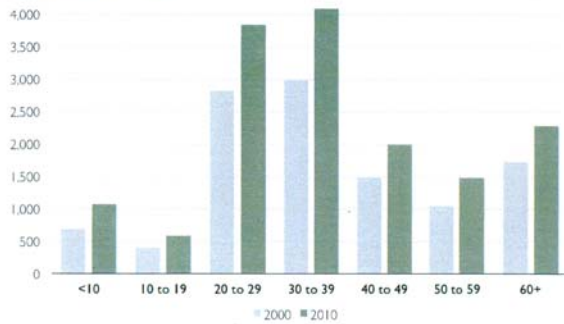


Exhibit 18: Age of Householder, 2000 and 2010
Downtown Pasadena

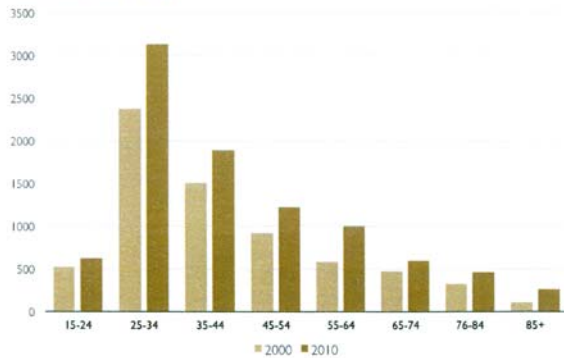


Exhibit 19: Numeric Growth or Decline by Age Group, 2000 - 2010
Downtown Pasadena

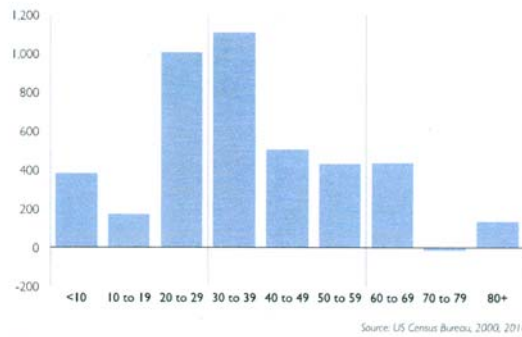
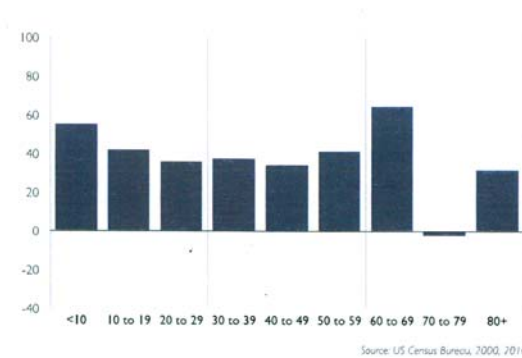


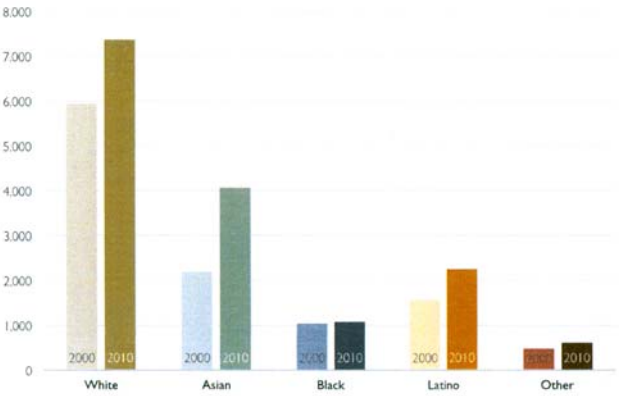
Exhibit 20: Percent Growth or Decline by Age Group, 2000 - 2010
Downtown Pasadena



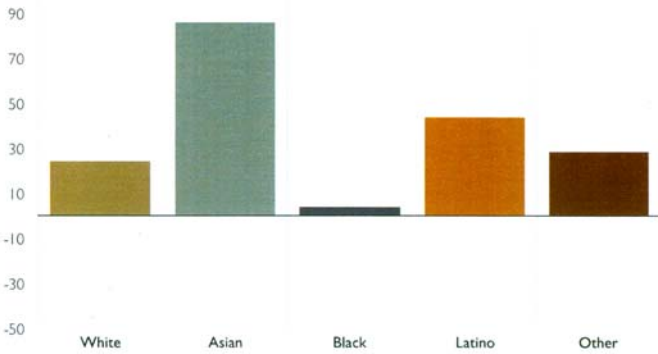
Total Pop: 11,182

DOWNTOWN PASADENA

**Exhibit 21: Population by Race/Ethnicity, 2000 and 2010
Downtown Pasadena**



**Exhibit 22: Percent Growth or Decline by Race/Ethnicity, 2000 to 2010
Downtown Pasadena**



Source: US Census Bureau, 2000, 2010.

Total Pop: 11,182

HASTINGS RANCH

Exhibit 23: Population by Age Group, 2000 and 2010
Hastings Ranch

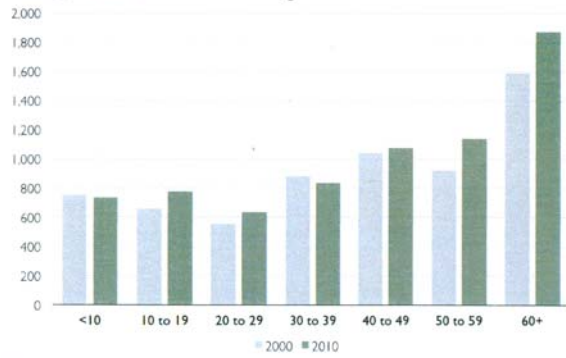


Exhibit 24: Age of Householder, 2000 and 2010
Hastings Ranch

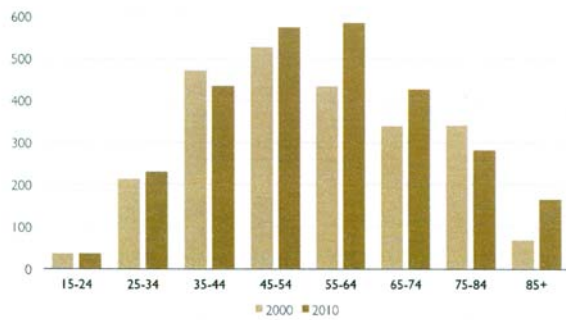


Exhibit 25: Numeric Growth or Decline by Age Group, 2000 - 2010
Hastings Ranch

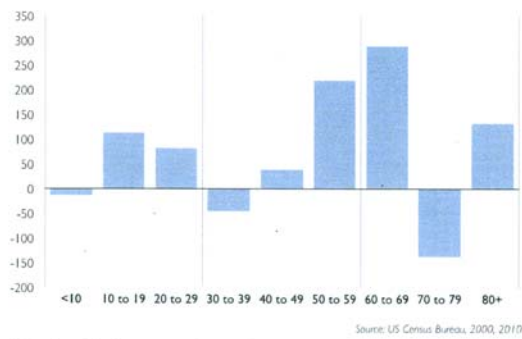
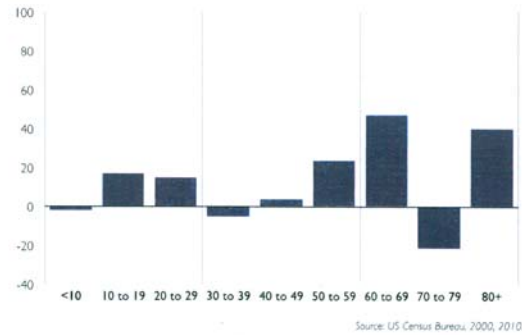


Exhibit 26: Percent Growth or Decline by Age Group, 2000 - 2010
Hastings Ranch



Total Pop: 6,403

HASTINGS RANCH

Exhibit 27: Population by Race/Ethnicity, 2000 and 2010
Hastings Ranch

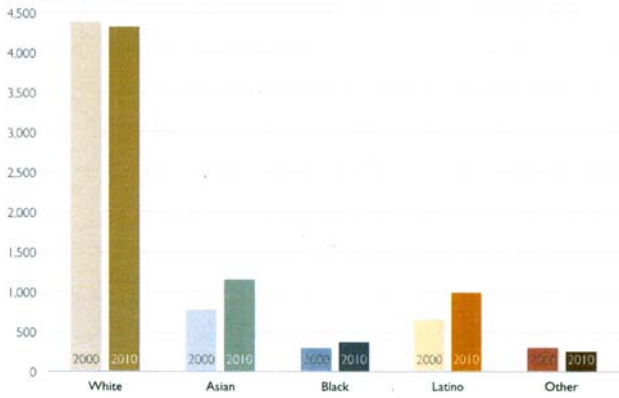
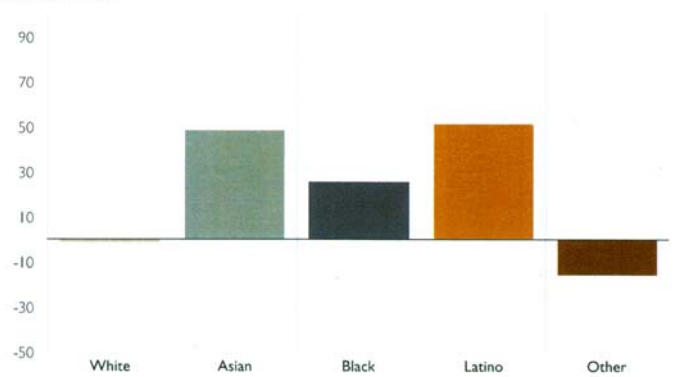


Exhibit 28: Percent Growth or Decline by Race/Ethnicity, 2000 to 2010
Hastings Ranch



Source: US Census Bureau, 2000, 2010.

Total Pop: 6,403

LINDA VISTA

Exhibit 29: Population by Age Group, 2000 and 2010

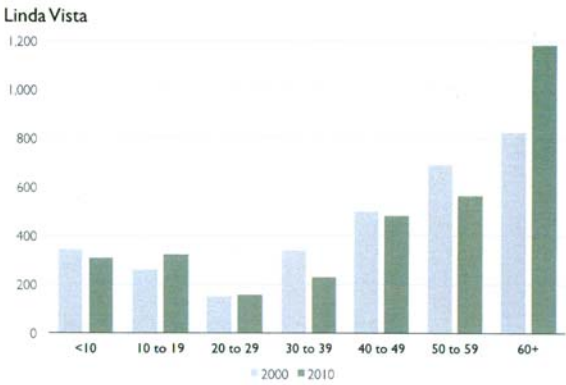


Exhibit 30: Age of Householder, 2000 and 2010

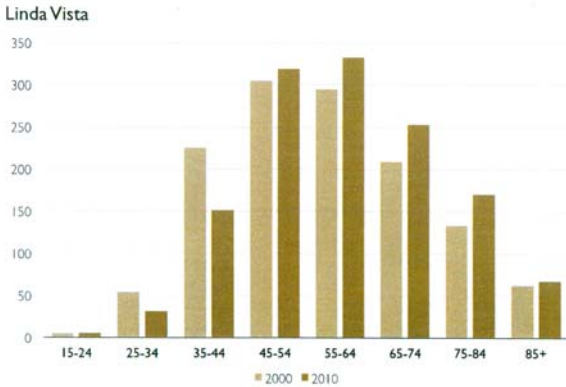


Exhibit 31: Numeric Growth or Decline by Age Group, 2000 - 2010

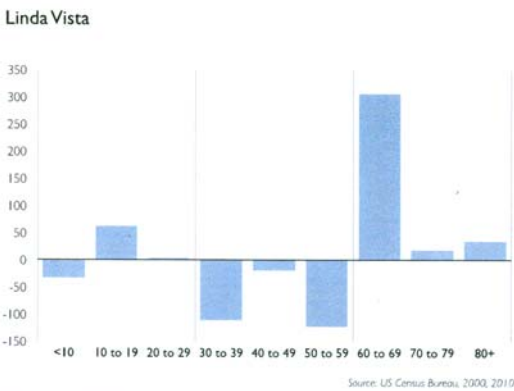
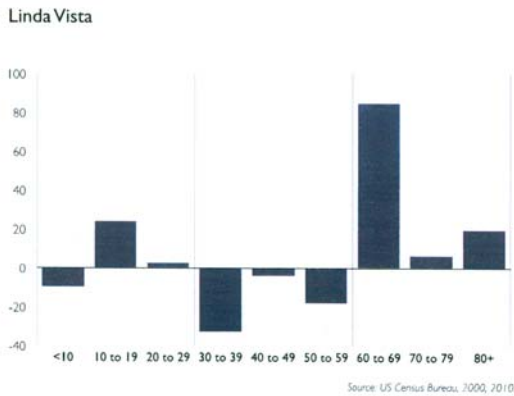


Exhibit 32: Percent Growth or Decline by Age Group, 2000 - 2010



Total Pop: 3,112

LINDA VISTA

Exhibit 33: Population by Race/Ethnicity, 2000 and 2010
Linda Vista

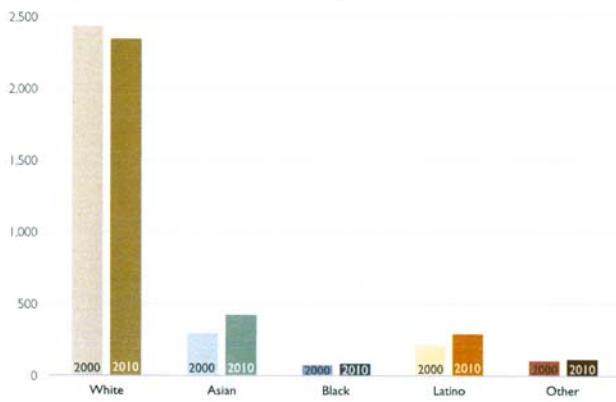
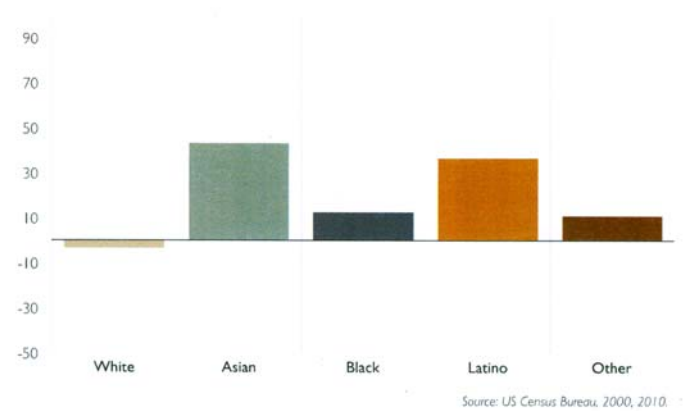


Exhibit 34: Percent Growth or Decline by Race/Ethnicity, 2000 to 2010
Linda Vista



Source: US Census Bureau, 2000, 2010.

Total Pop: 3,112

NORTHWEST PASADENA

Exhibit 35: Population by Age Group, 2000 and 2010
Northwest Pasadena

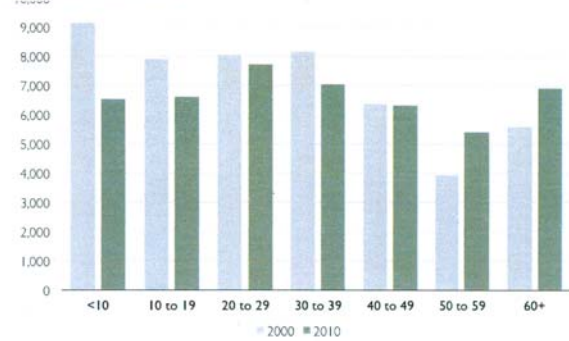


Exhibit 36: Age of Householder, 2000 and 2010
Northwest Pasadena

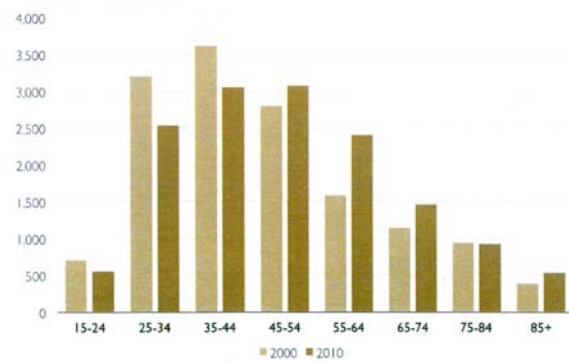


Exhibit 37: Numeric Growth or Decline by Age Group, 2000 - 2010
Northwest Pasadena

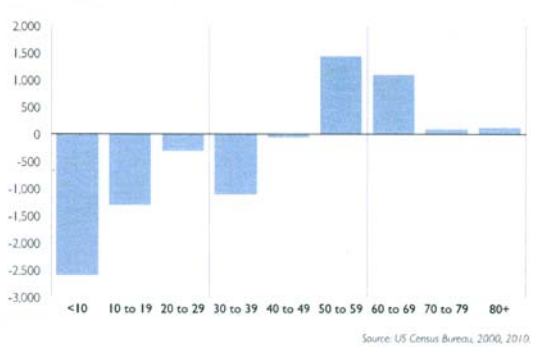
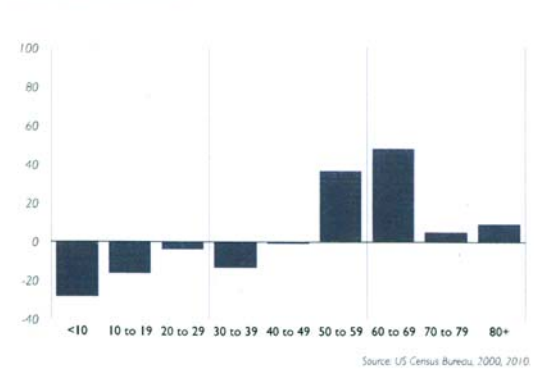


Exhibit 38: Percent Growth or Decline by Age Group, 2000 - 2010
Northwest Pasadena



Total Pop: 46,553

NORTHWEST PASADENA

Exhibit 39: Population by Race/Ethnicity, 2000 and 2010

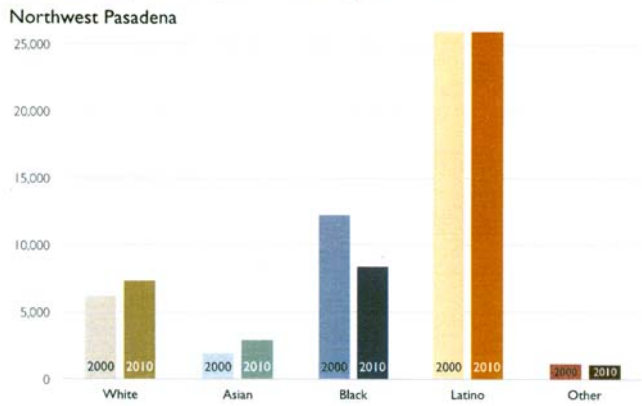
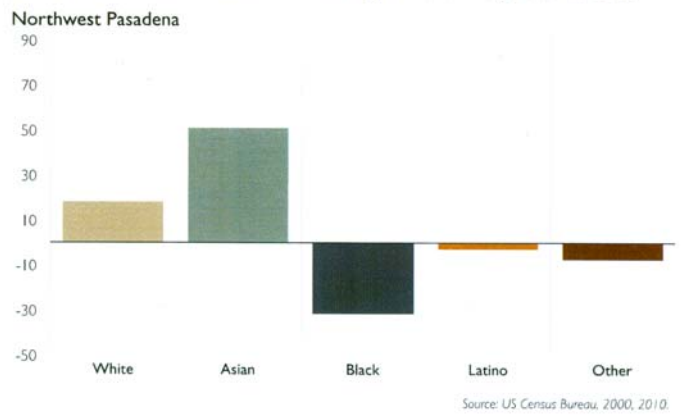


Exhibit 40: Percent Growth or Decline by Race/Ethnicity 2000 to 2010



Total Pop: 46,553