



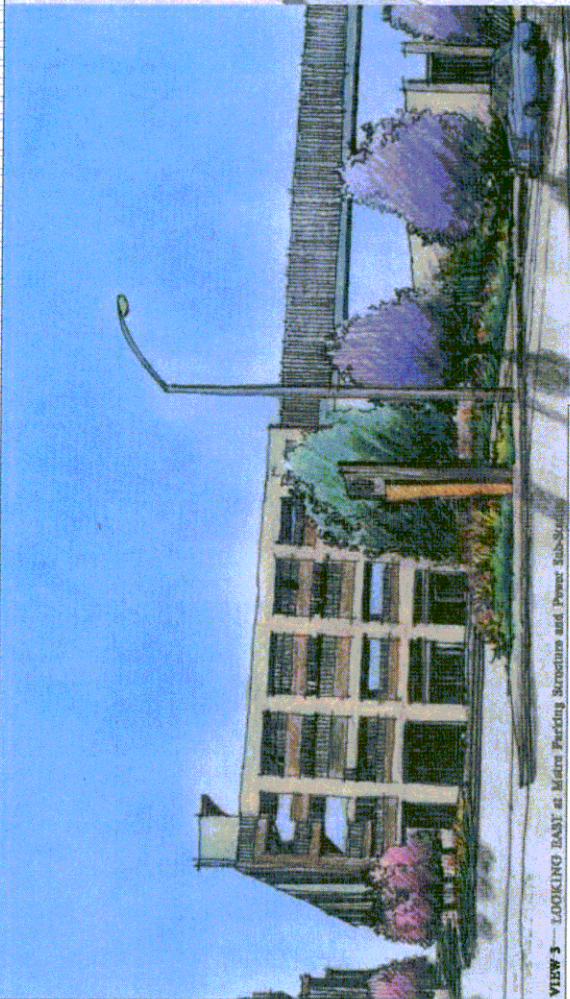






# SIERRA MADRE VILLA AVENUE STREETSCAPE

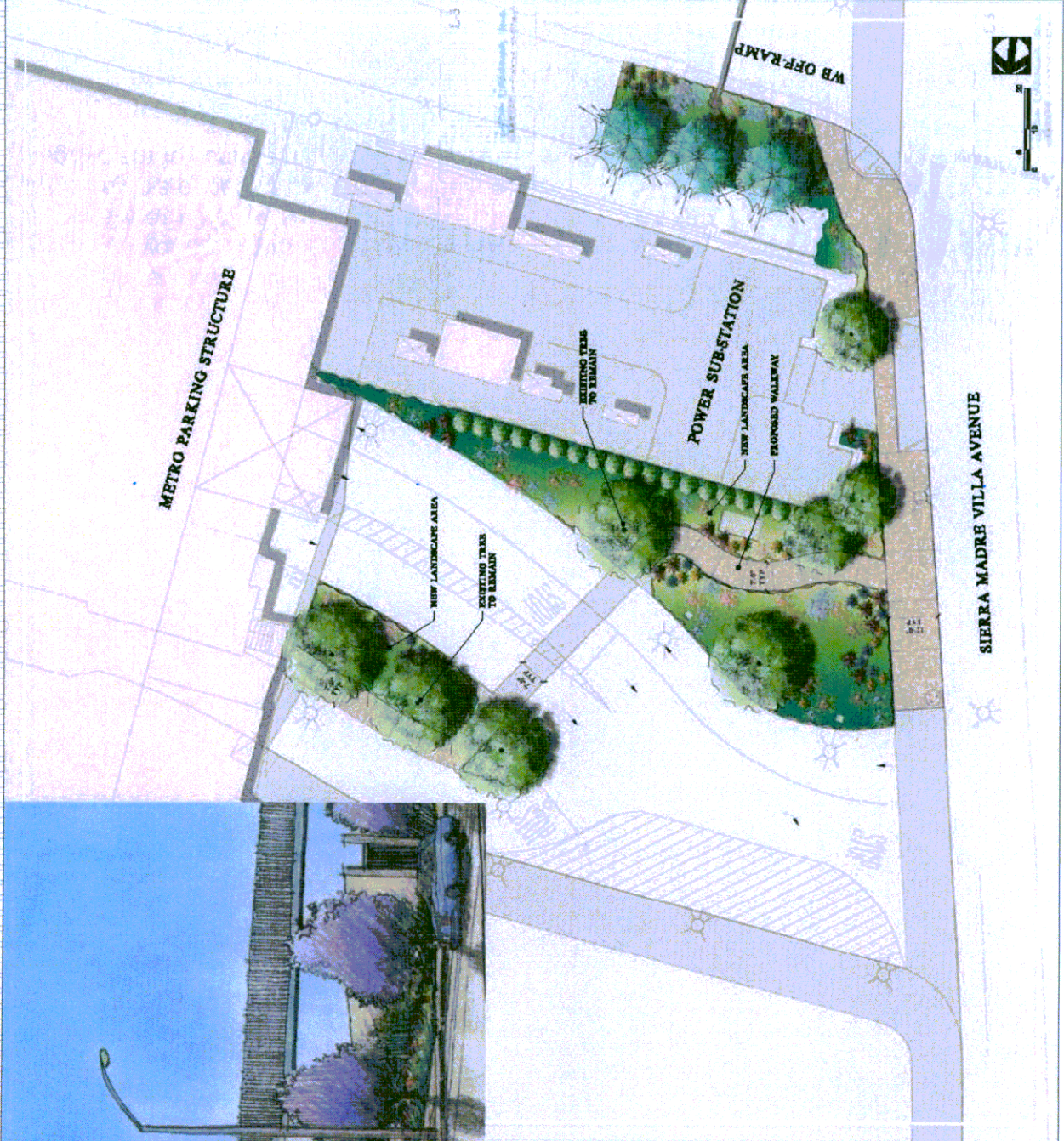
DATE: September 13, 2017



VIEW 3 - LOOKING EAST at Metro Parking Structure and Power Sub-Station

L-3

Lynne Chapman's Inc.  
LANDSCAPE ARCHITECTS



## PLANT PALETTE

### TREES

- *Albizia julibrissin* (Silk Tree)
- *Cordia alliodora* (Alligator Tree)
- *Magdalenia grandiflora* (Peachleaf Magdalen)
- *Ficus sp.* (Mixed including Ficus tree)

- Existing Trees to Remain

### SHRUBS / PERENNIALS

- *Carex glauca* (Blue Sedge)
- *Conocarpus strictus* 'Tom Thumb' (Tom Thumb Cordgrass)
- *Convolvulus* sp. (Cobalt Flagon)
- *Convolvulus 'Star'* (Silver Star)
- *Bromelia schottlandii* (Dove)
- *Bromelia 'Mist'* (Daffodil)
- *Leucosiphon perfoliatum* (Cloud Tree)
- *Leucosiphon perfoliatum* (Spreading Lantana)
- *Muhlenbergia laevis* 'Hollow Drum' (Hollow Drum)
- *Phoradendron leucocarpum* (White Star)
- *Stachytarpheta jamaicensis* (Blue Sage)
- *Stachytarpheta* (Belt of Pander)

