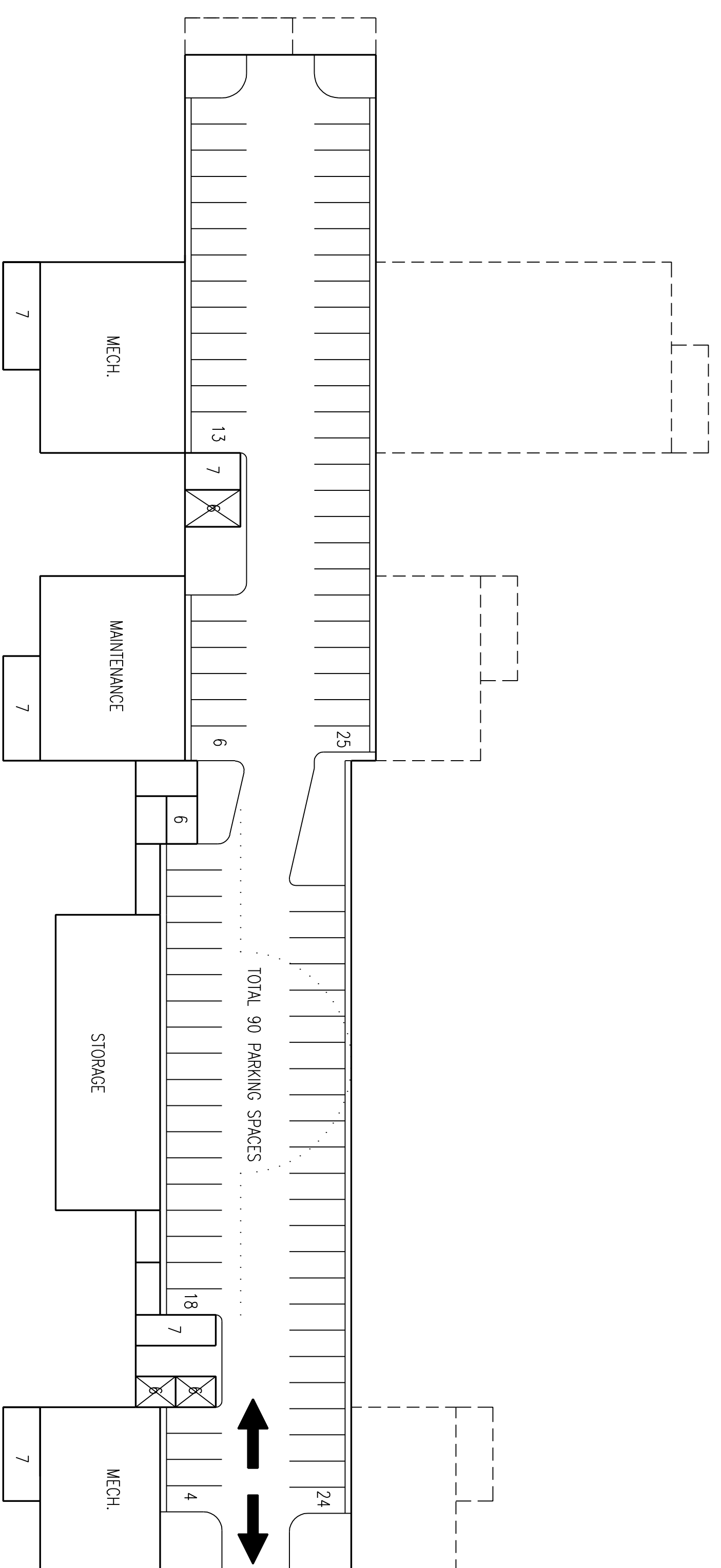


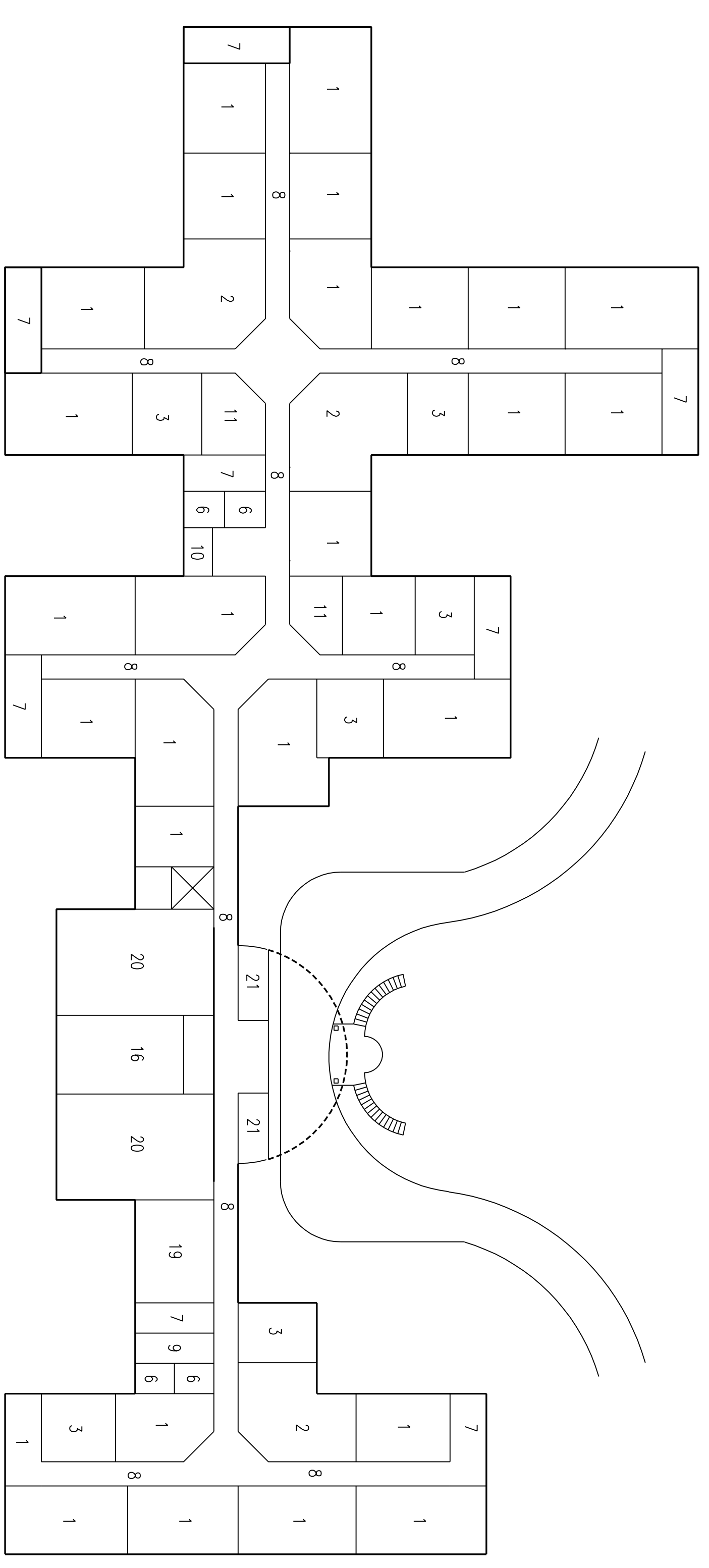
Las Encinas Hospital

Master Development Plan Amendment



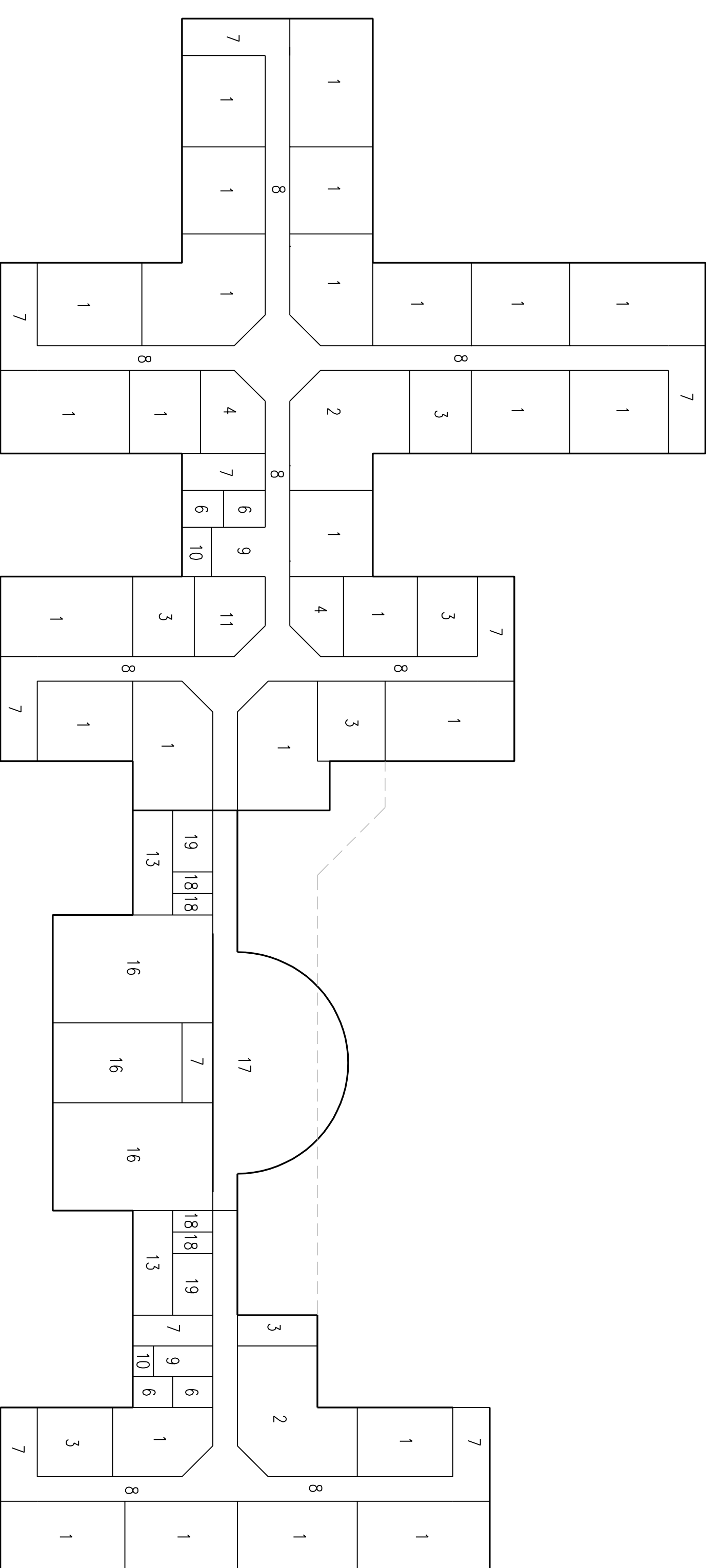
- 1 LIVING UNIT (1 BEDROOM)
- 2 LIVING UNIT (2 BEDROOM)
- 3 LIVING UNIT (STUDIO)
- 4 LOUNGE
- 5 ELEVATOR
- 6 ELEVATOR
- 7 STAIR
- 8 CORRIDOR
- 9 HOUSKEEPING LOBBY
- 10 HOUSKEEPING
- 11 ELEVATOR EQUIPMENT
- 12 MECH/ELECT. EQUIPMENT
- 13 SERVICE ACCESS
- 14 MECH/ELECT. EQUIPMENT
- 15 SERVICE ACCESS
- 16 KITCHEN
- 17 ROOF GARDEN
- 18 ROOF GARDEN
- 19 ROOF GARDEN
- 20 DINING
- 21 OFFICE

INDEPENDENT LIVING UNITS-AMBERGOLD GARAGE
1/24" = 1'-0"



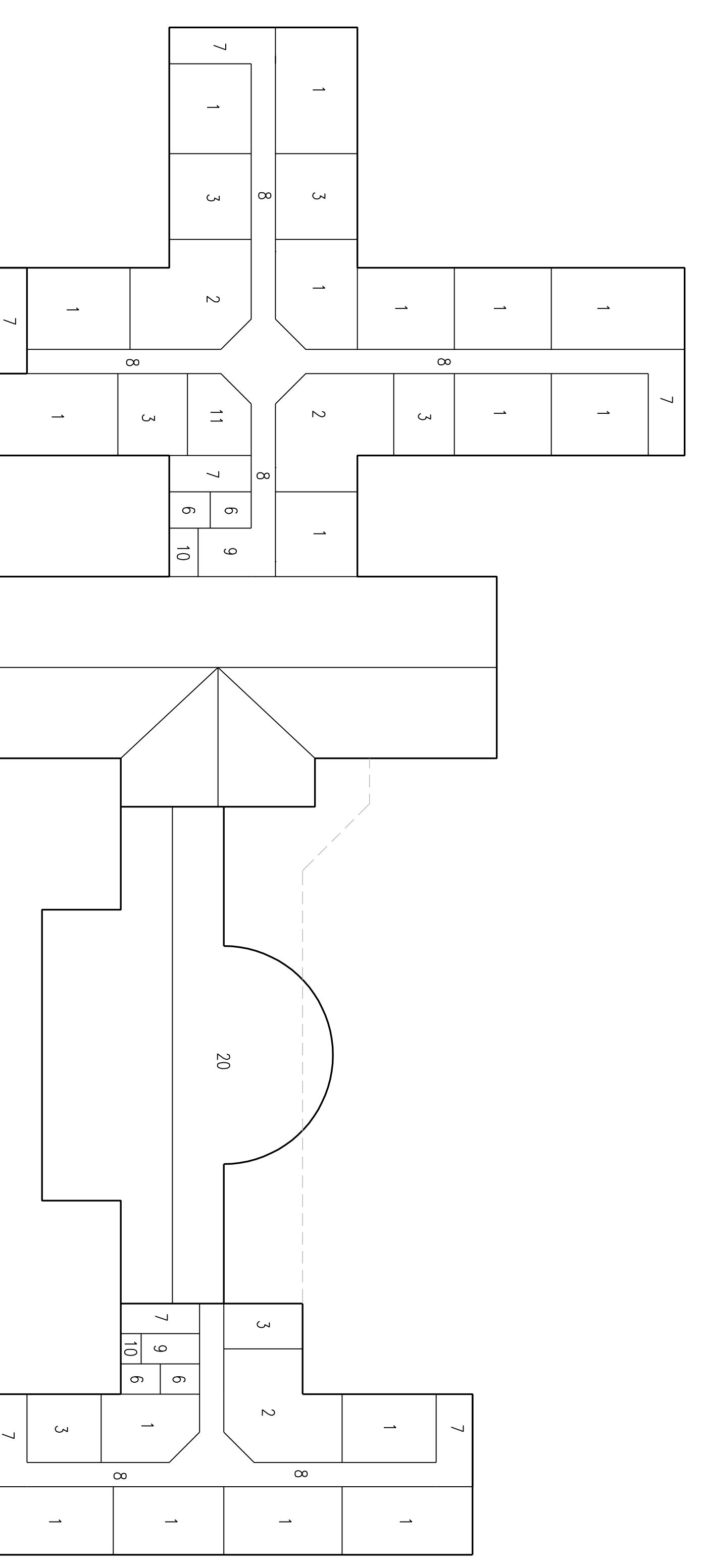
- 1 LIVING UNIT (1 BEDROOM)
- 2 LIVING UNIT (2 BEDROOM)
- 3 LIVING UNIT (STUDIO)
- 4 LOUNGE
- 5 ELEVATOR
- 6 ELEVATOR
- 7 STAIR
- 8 CORRIDOR
- 9 HOUSKEEPING LOBBY
- 10 HOUSKEEPING
- 11 ELEVATOR EQUIPMENT
- 12 MECH/ELECT. EQUIPMENT
- 13 SERVICE ACCESS
- 14 MECH/ELECT. EQUIPMENT
- 15 SERVICE ACCESS
- 16 KITCHEN
- 17 ROOF GARDEN
- 18 ROOF GARDEN
- 19 ROOF GARDEN
- 20 DINING
- 21 OFFICE

INDEPENDENT LIVING UNITS-FIRST FLOOR PLAN
1/24" = 1'-0"



- 1 LIVING UNIT (1 BEDROOM)
- 2 LIVING UNIT (2 BEDROOM)
- 3 LIVING UNIT (STUDIO)
- 4 LOUNGE
- 5 ELEVATOR
- 6 ELEVATOR
- 7 STAIR
- 8 CORRIDOR
- 9 HOUSKEEPING LOBBY
- 10 HOUSKEEPING
- 11 ELEVATOR EQUIPMENT
- 12 MECH/ELECT. EQUIPMENT
- 13 SERVICE ACCESS
- 14 MECH/ELECT. EQUIPMENT
- 15 SERVICE ACCESS
- 16 KITCHEN/DINING BELOW
- 17 ROOF GARDEN
- 18 ROOF GARDEN
- 19 ROOF GARDEN
- 20 ROOF GARDEN

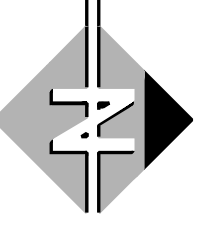
INDEPENDENT LIVING UNITS-SECOND FLOOR PLAN
1/24" = 1'-0"



- 1 LIVING UNIT (1 BEDROOM)
- 2 LIVING UNIT (2 BEDROOM)
- 3 LIVING UNIT (STUDIO)
- 4 LOUNGE
- 5 ELEVATOR
- 6 ELEVATOR
- 7 STAIR
- 8 CORRIDOR
- 9 HOUSKEEPING LOBBY
- 10 HOUSKEEPING
- 11 ELEVATOR EQUIPMENT
- 12 MECH/ELECT. EQUIPMENT
- 13 SERVICE ACCESS
- 14 MECH/ELECT. EQUIPMENT
- 15 SERVICE ACCESS
- 16 KITCHEN/DINING BELOW
- 17 ROOF GARDEN
- 18 ROOF GARDEN
- 19 ROOF GARDEN
- 20 ROOF GARDEN

INDEPENDENT LIVING UNITS-THIRD FLOOR PLAN
1/24" = 1'-0"

1 PROPOSED CONCEPTUAL BUILDING PLANS
1/24" = 1'-0"



MORSE - BOURDREUX ARCHITECTS
1901A Newport Boulevard
Costa Mesa, CA 92627
Tel: 714.251.5071
Fax: 714.251.5073