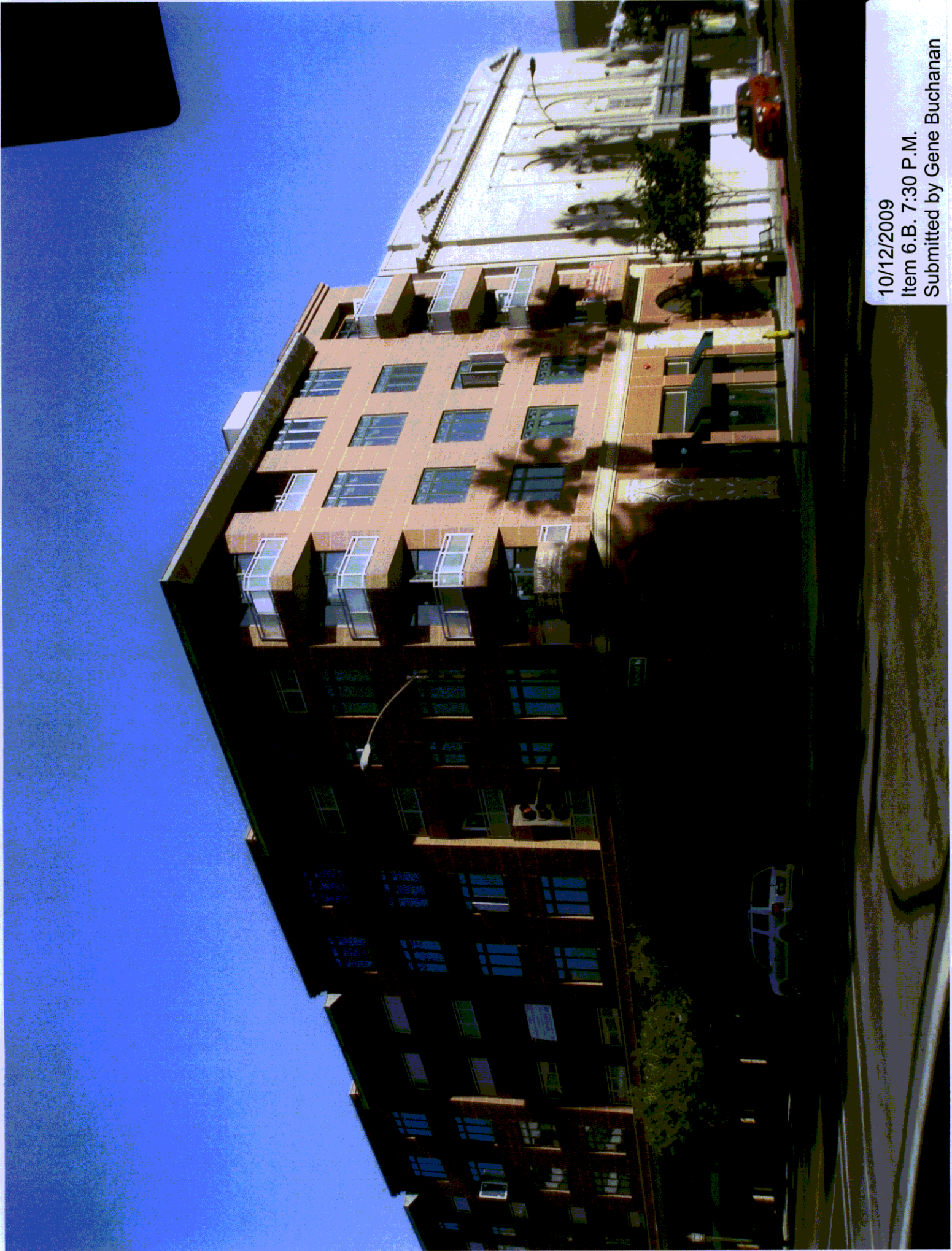


**CORRESPONDENCE/HANDOUTS
FROM OCTOBER 12, 2009
COUNCIL MEETING**

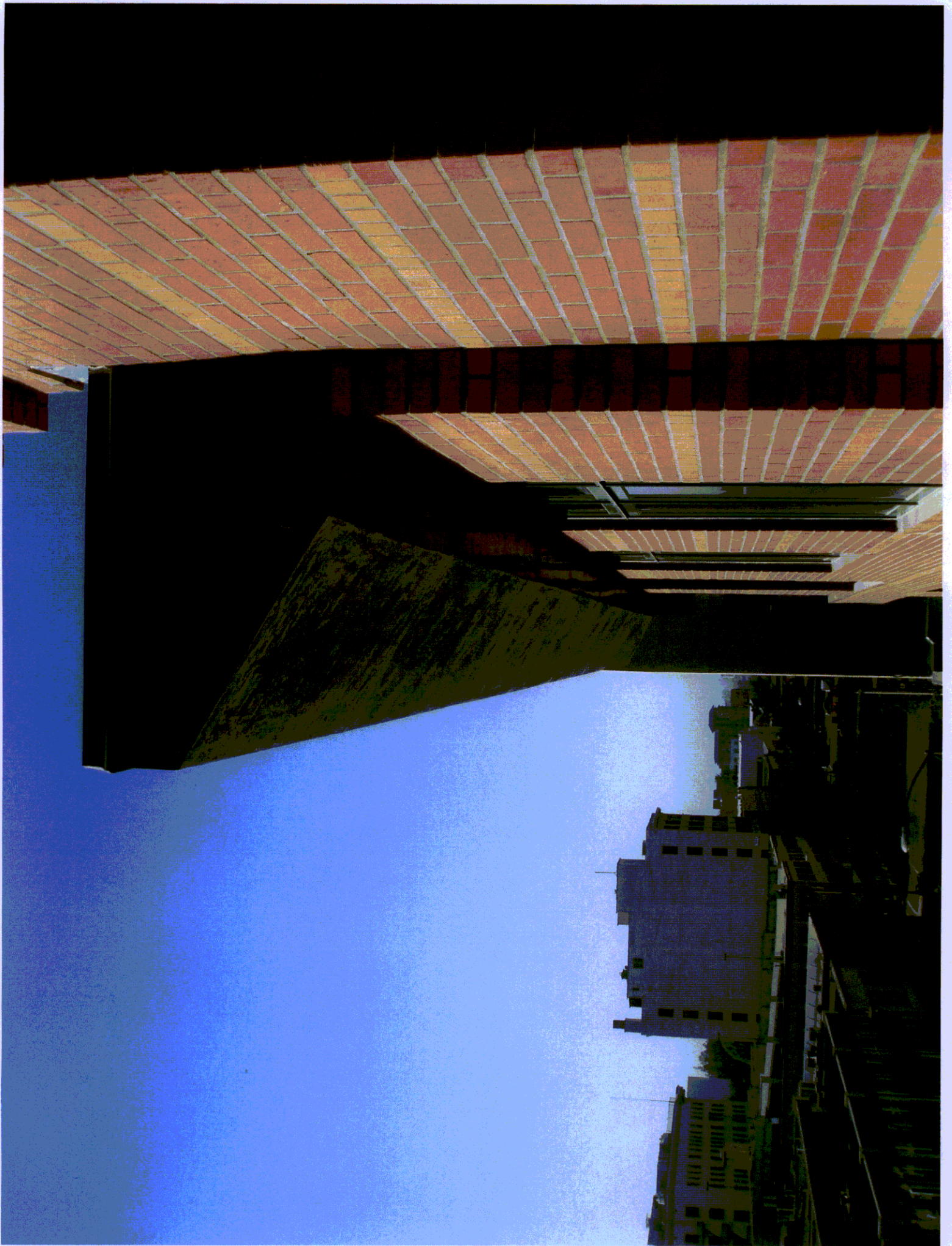


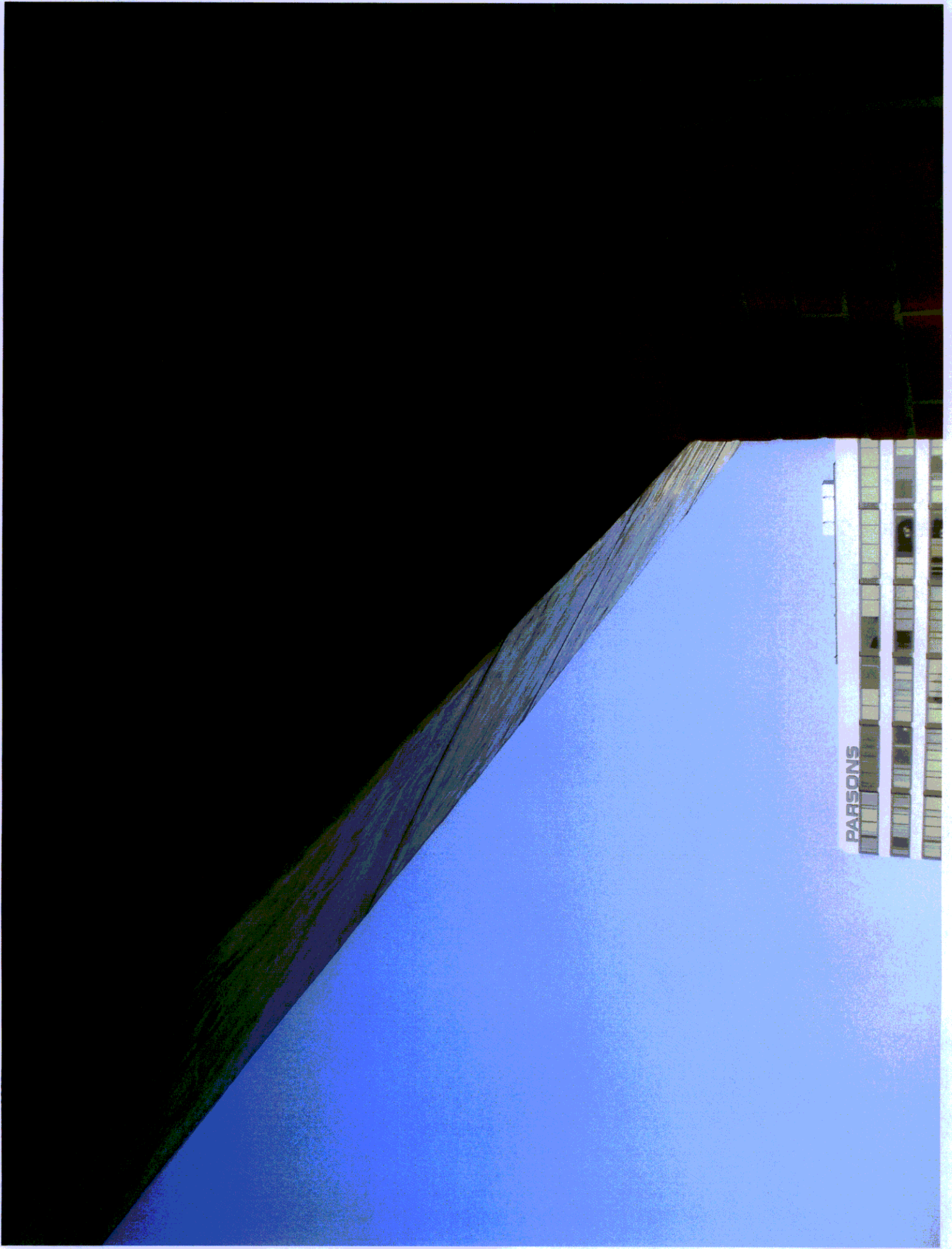
10/12/2009

Item 6.B. 7:30 P.M.

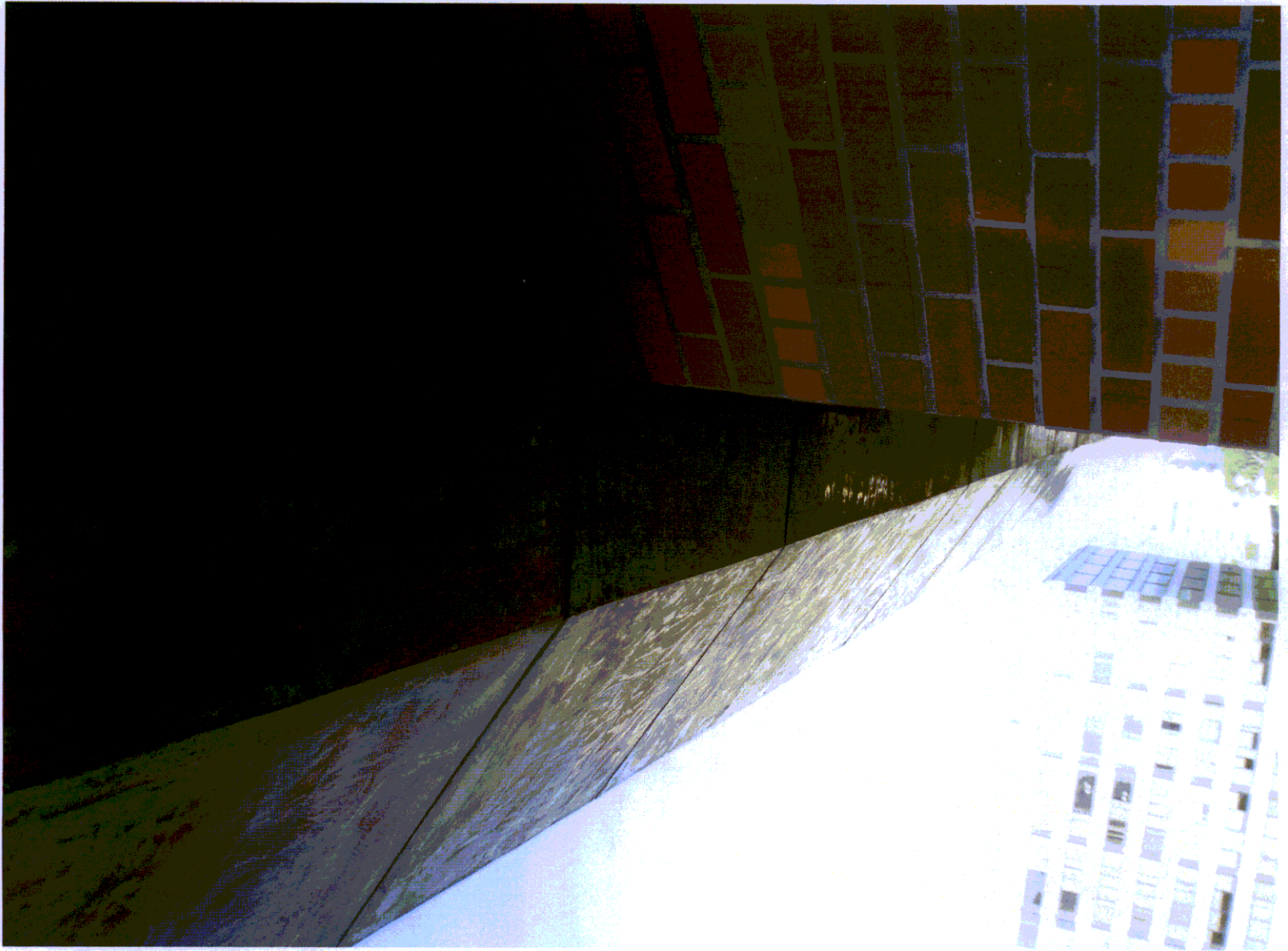
Submitted by Gene Buchanan

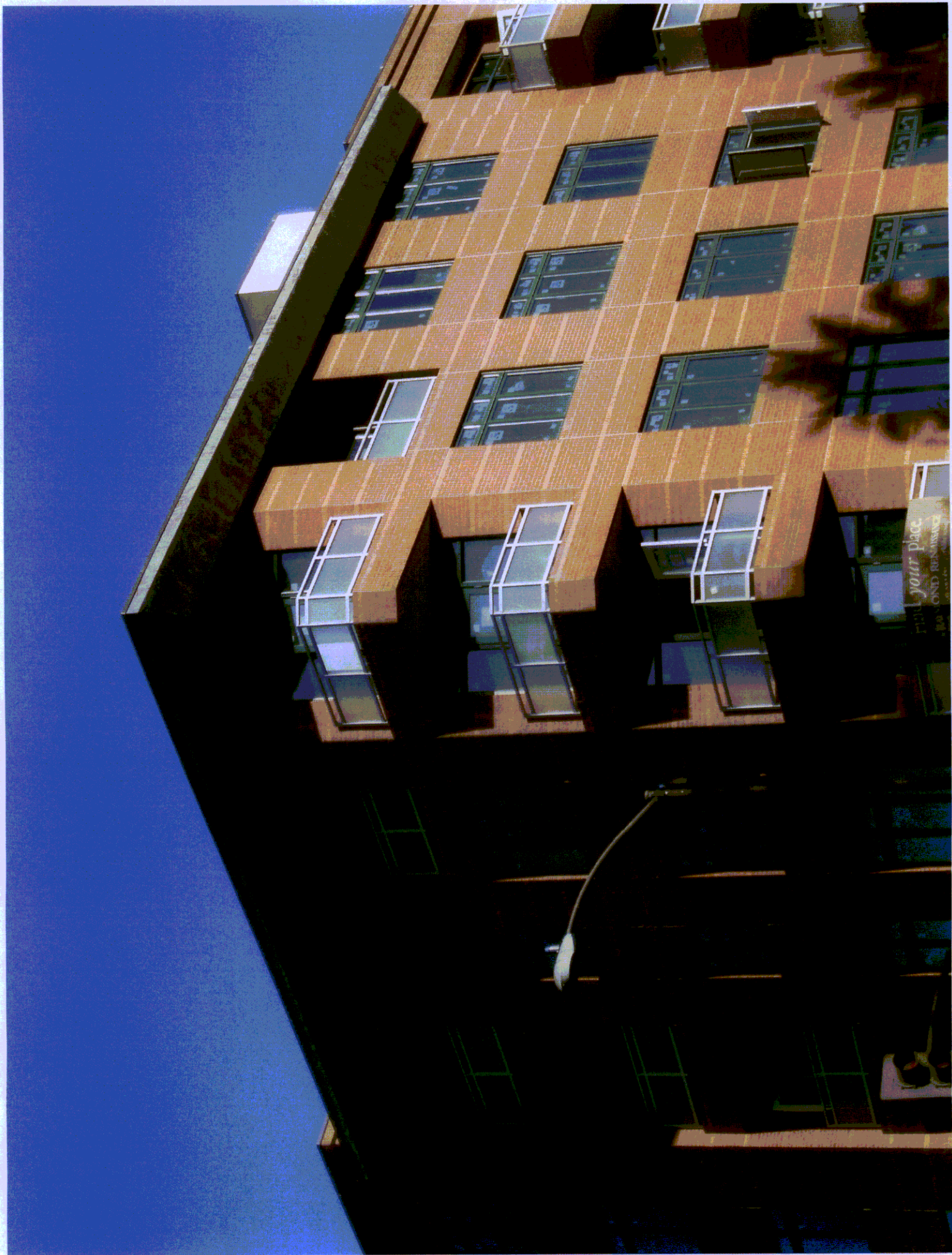


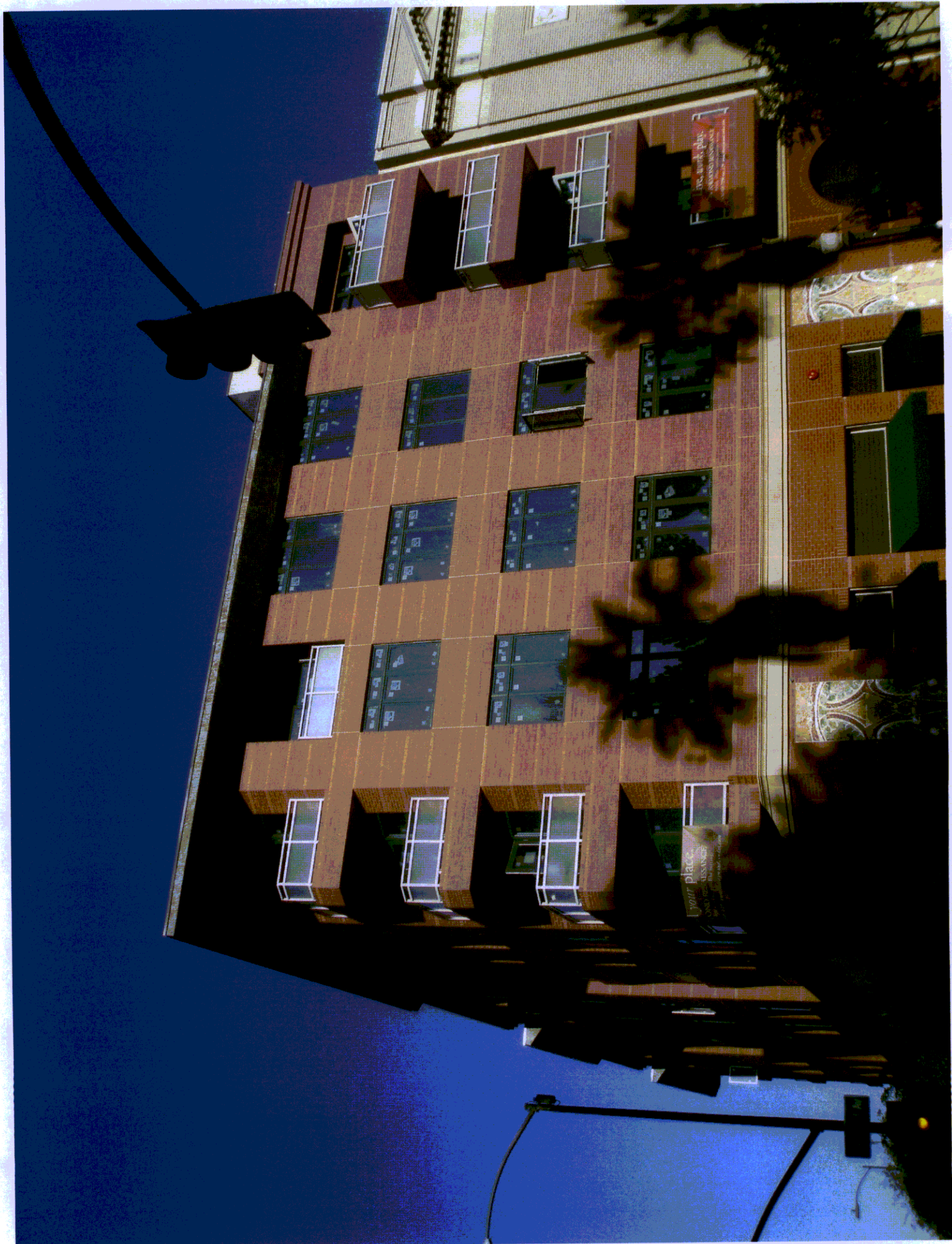




PARSONS









August 19, 2009

To Whom It May Concern:

Re: The Raymond Renaissance
121-129 North Raymond Ave.
Pasadena, Ca 91105

California Plastering Inc. was contracted to apply a Smooth trowel Vero finish in lieu of a Copper patina fascia, we feel this application has many benefits as we would like to point out.

- 1) Water resistant
- 2) Less susceptible to Color Deviations.
- 3) Superior shading coefficient.
- 4) Less prone to damage or Dents.
- 5) Could not guarantee copper would not be wavy (oilcan effects as in true copper siding).
- 6) Less maintenance no re- caulking of Joints or terminations.

We are proud of the product supplied and feel it compliments the project and the neighborhood. If you have any questions please feel free to call me (818-612-3231).

Sincerely,

Todd Skinner
Operations Manager
California Plastering Inc.