

72 E. Glenarm Street: Glenarm Power Plant



Aerial photo of site (2006)

72 E. Glenarm Street: Glenarm Power Plant



Aerial photo from 1930's



Aerial photo from 1950's

72 E. Glenarm Street: Glenarm Power Plant

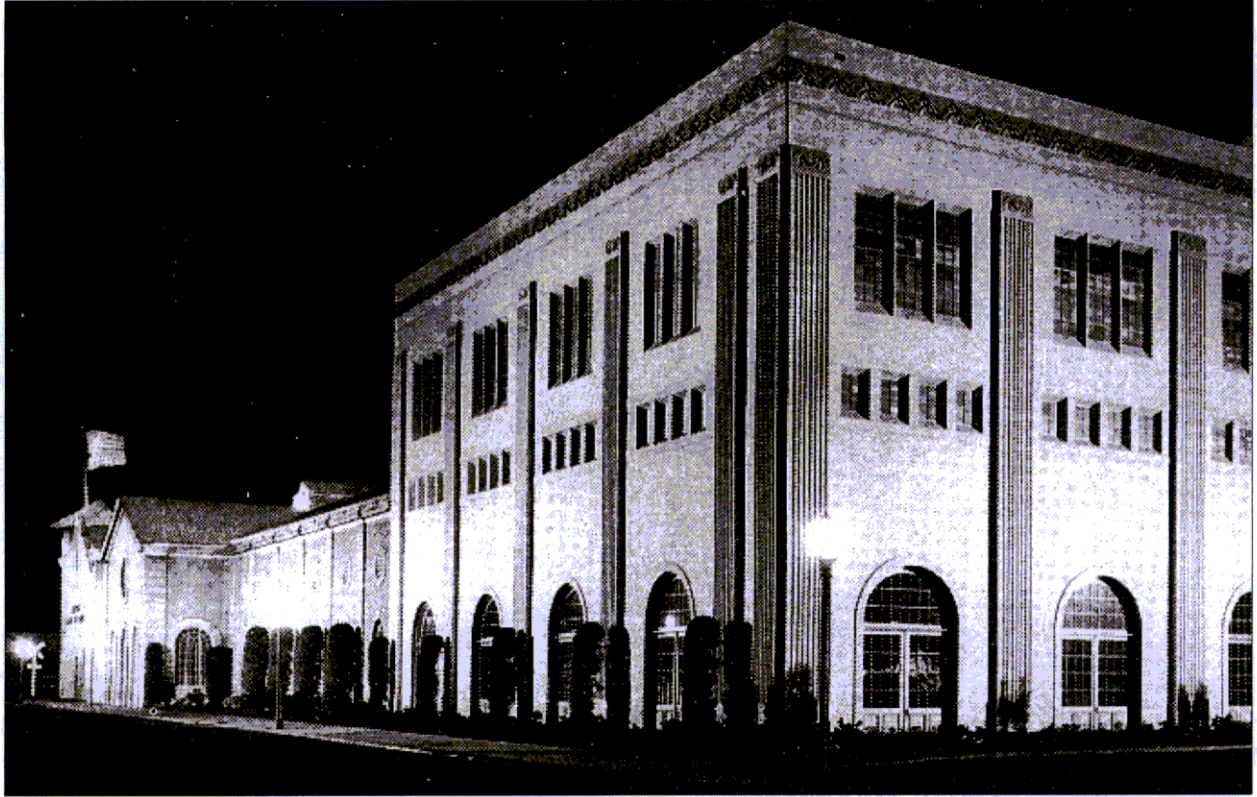


Aerial from east/rear (2005)

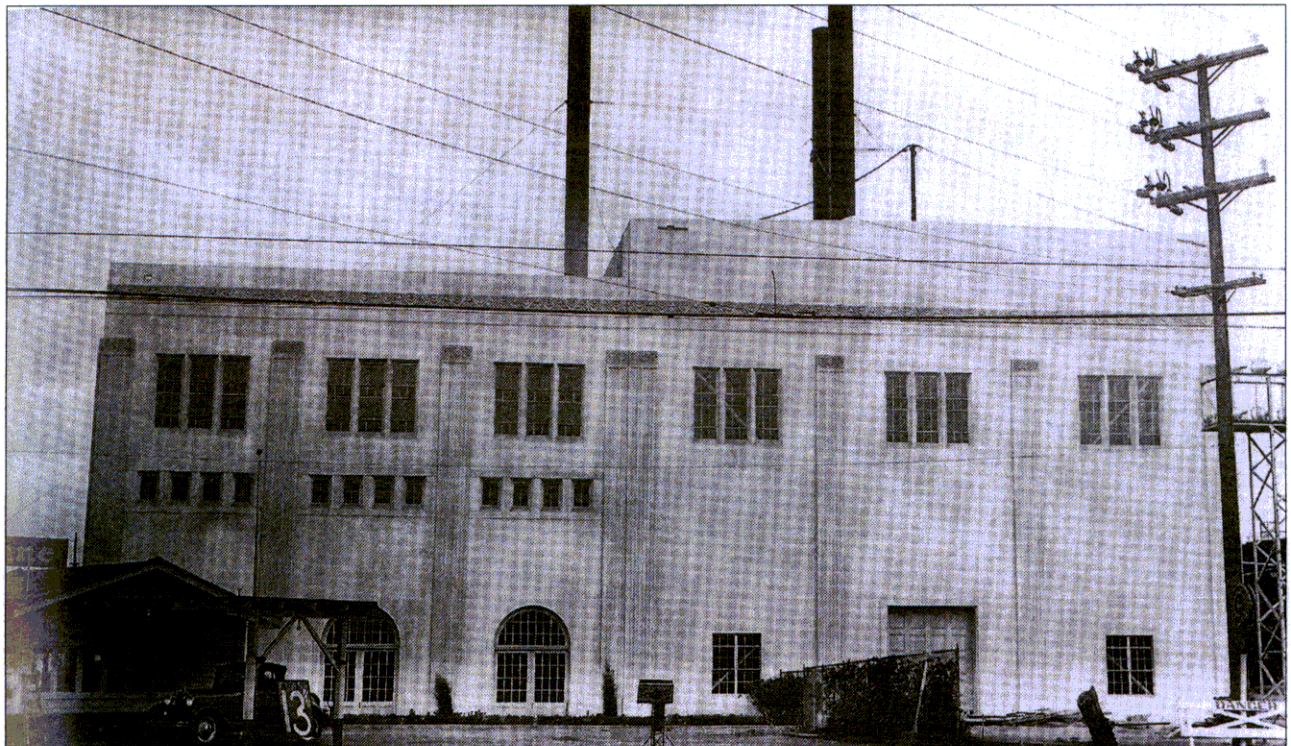


1906 Power Plant building (now demolished) on E. Glenarm Street at terminus of S. Raymond Ave.

72 E. Glenarm Street: Glenarm Power Plant

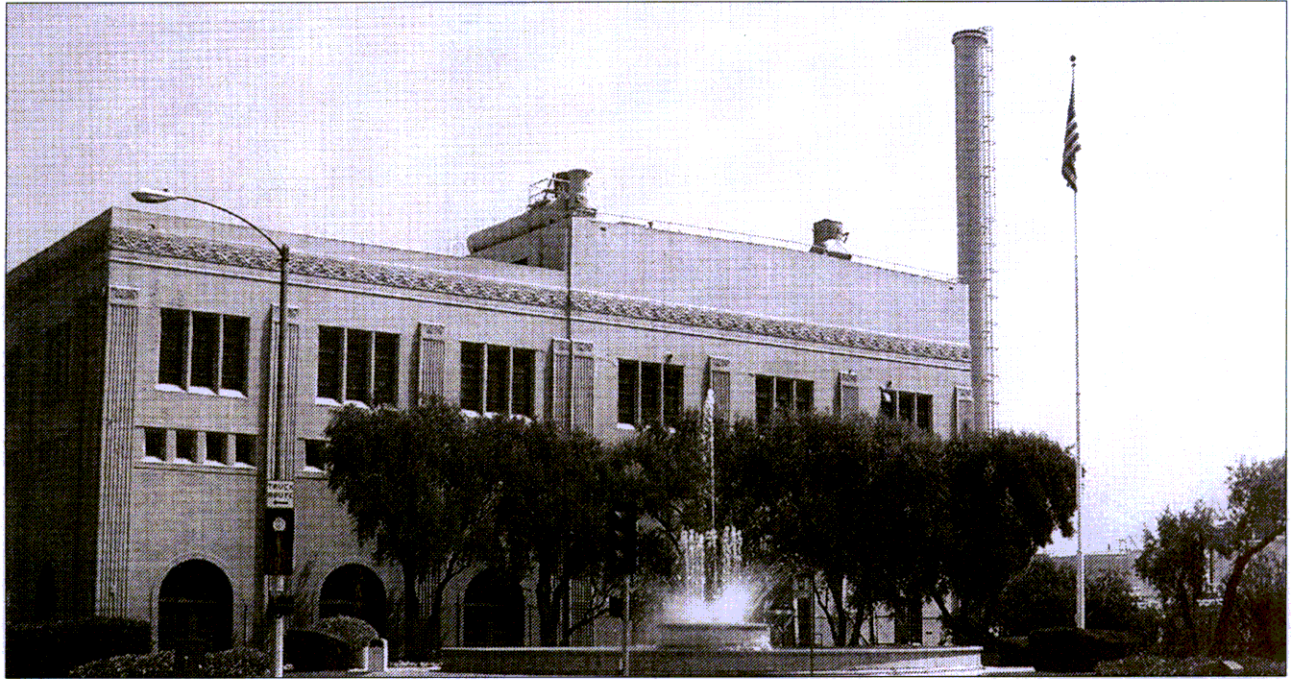


Original configuration of power plant with all additions



West elevation of power plant (late 1920's)

72 E. Glenarm Street: Glenarm Power Plant

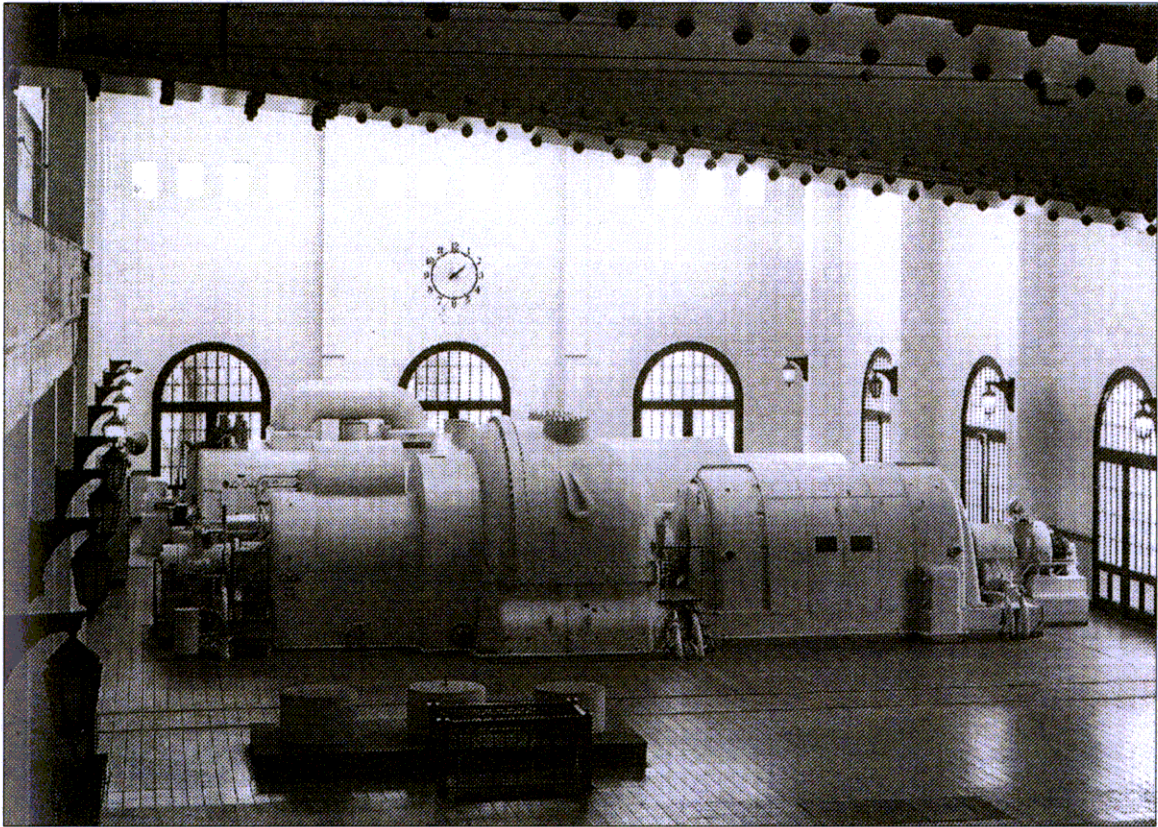


West elevation (date unknown)

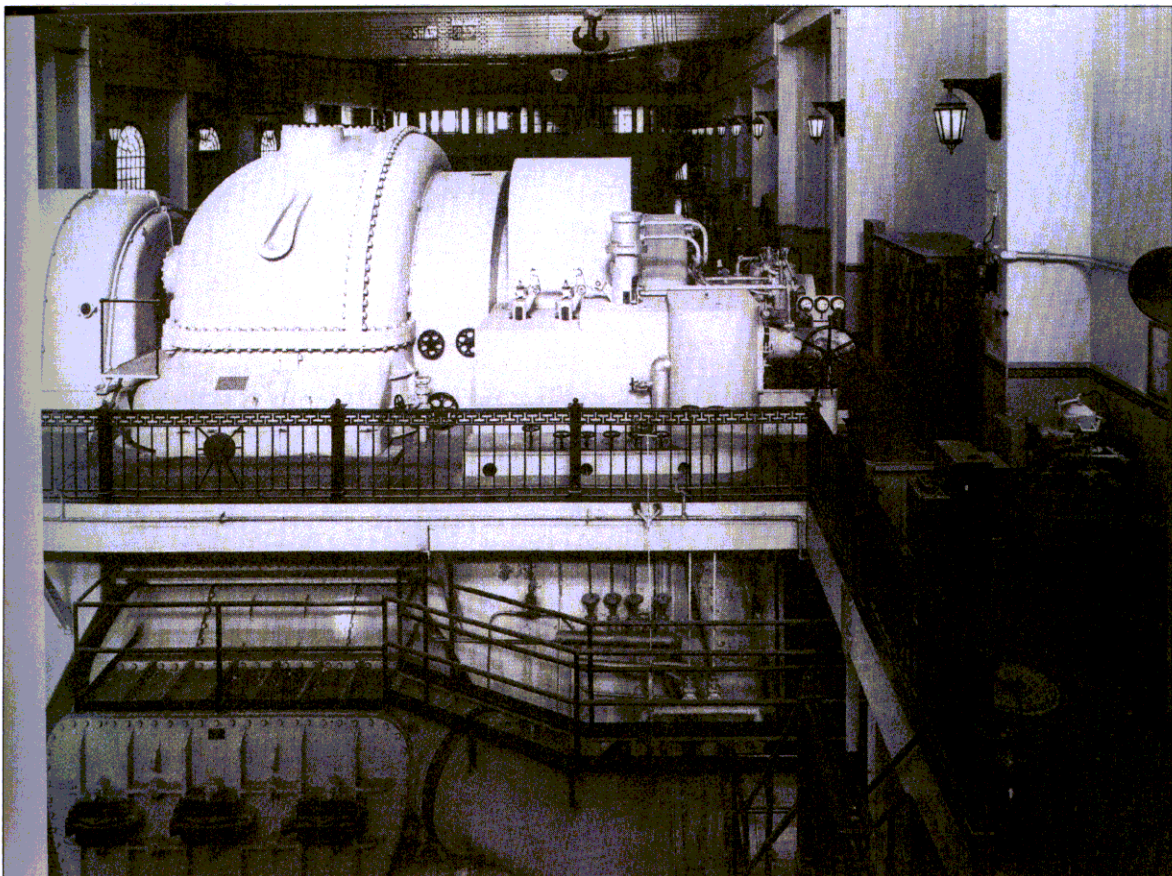


West elevation (current)

72 E. Glenarm Street: Glenarm Power Plant



Turbine Unit #8 (from east - 1932)



Turbine Unit #8 from west (1932)

72 E. Glenarm Street: Glenarm Power Plant

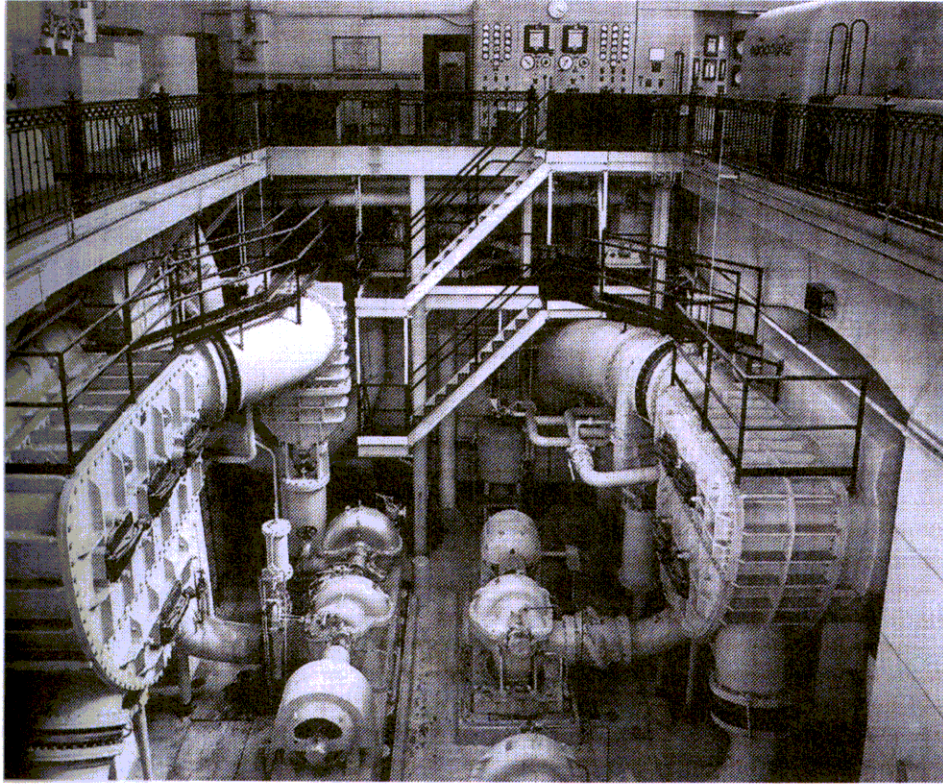


Turbine Unit 9 (current), clock and railing



Turbine Unit 8 (current)

72 E. Glenarm Street: Glenarm Power Plant

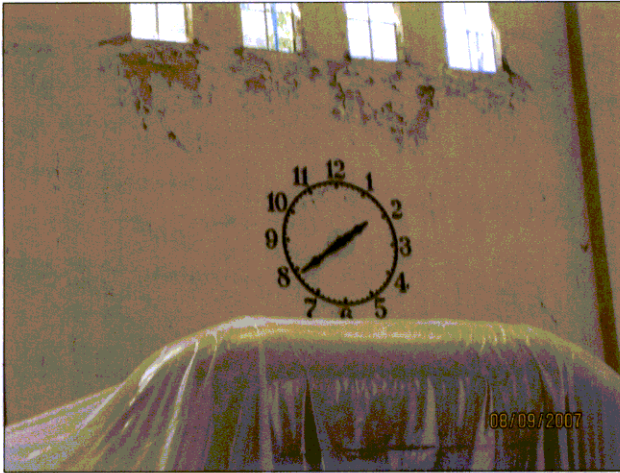


Mechanical well/condenser units from north (early 1950's)

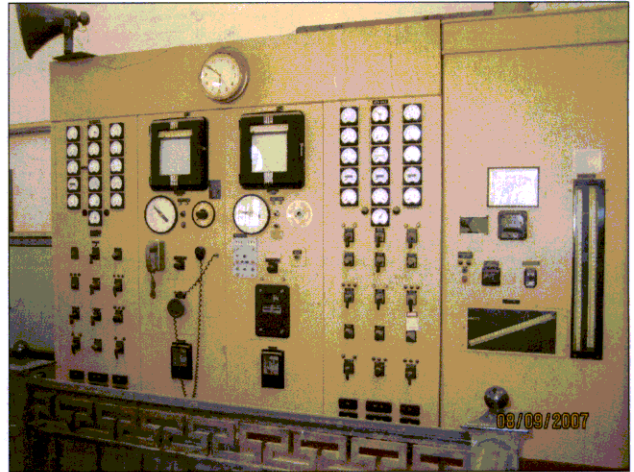


Mechanical well/condenser units (current)

72 E. Glenarm Street: Glenarm Power Plant



Turbine Hall clock detail



Turbine Hall control panel detail



Turbine Hall control panel detail



Turbine Hall tile detail



Easterly portion of Turbine hall



Turbine Hall tile and lamps

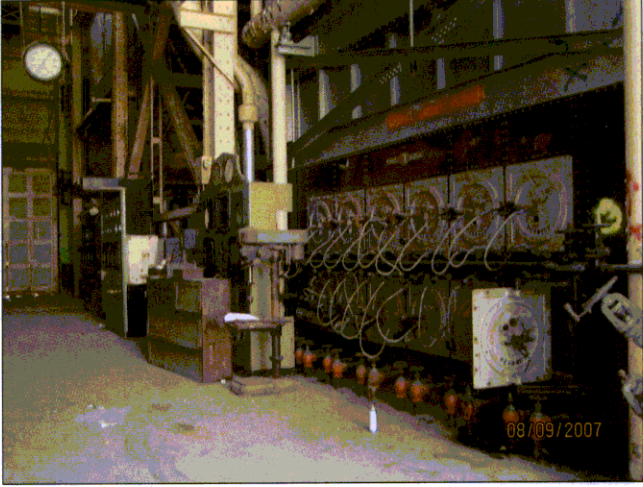
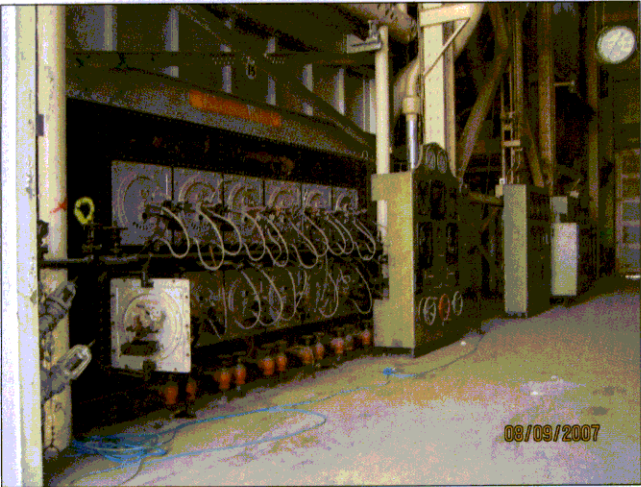
72 E. Glenarm Street: Glenarm Power Plant



Boiler Room hallway (east end – now empty)



Boiler Room hallway (west end - current)



Boiler Room hallway/burner fronts

72 E. Glenarm Street: Glenarm Power Plant



Fountain



Close-up of fountain



Fountain perimeter wall detail



Fountain tile detail