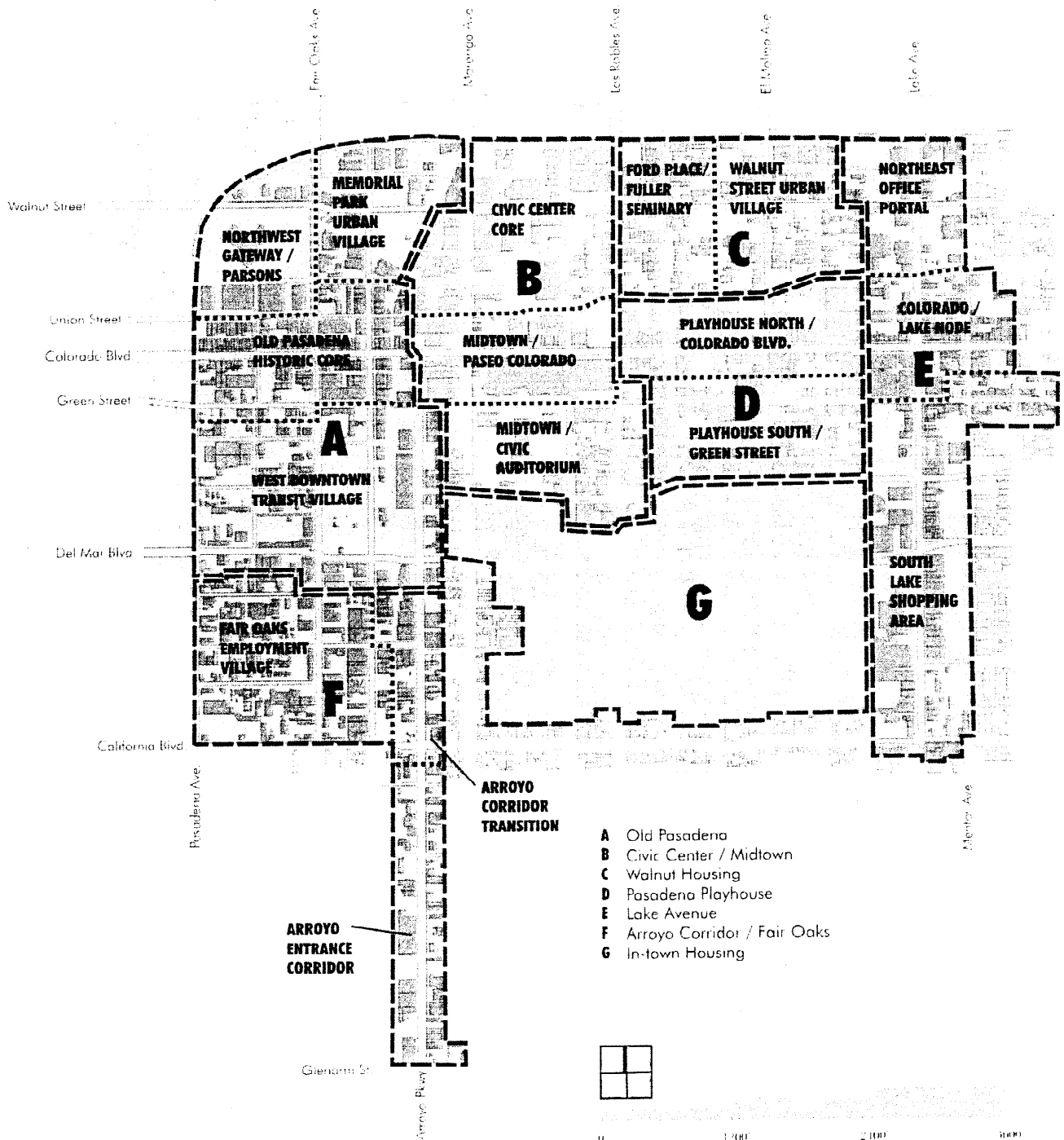


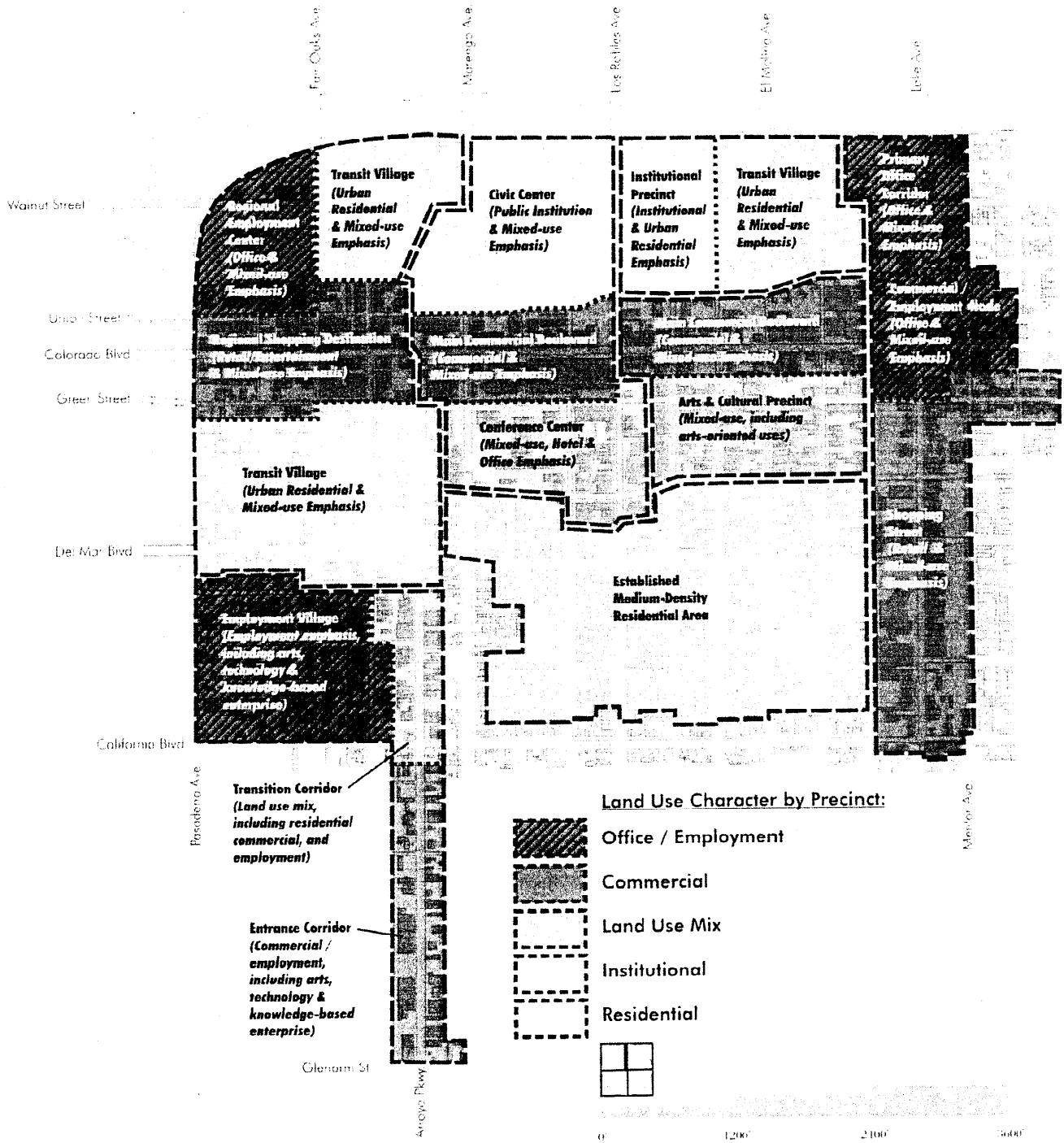
Section 4 **DISTRICT-WIDE LAND USE CONCEPT**

District-Wide Map 10: Precinct Concept



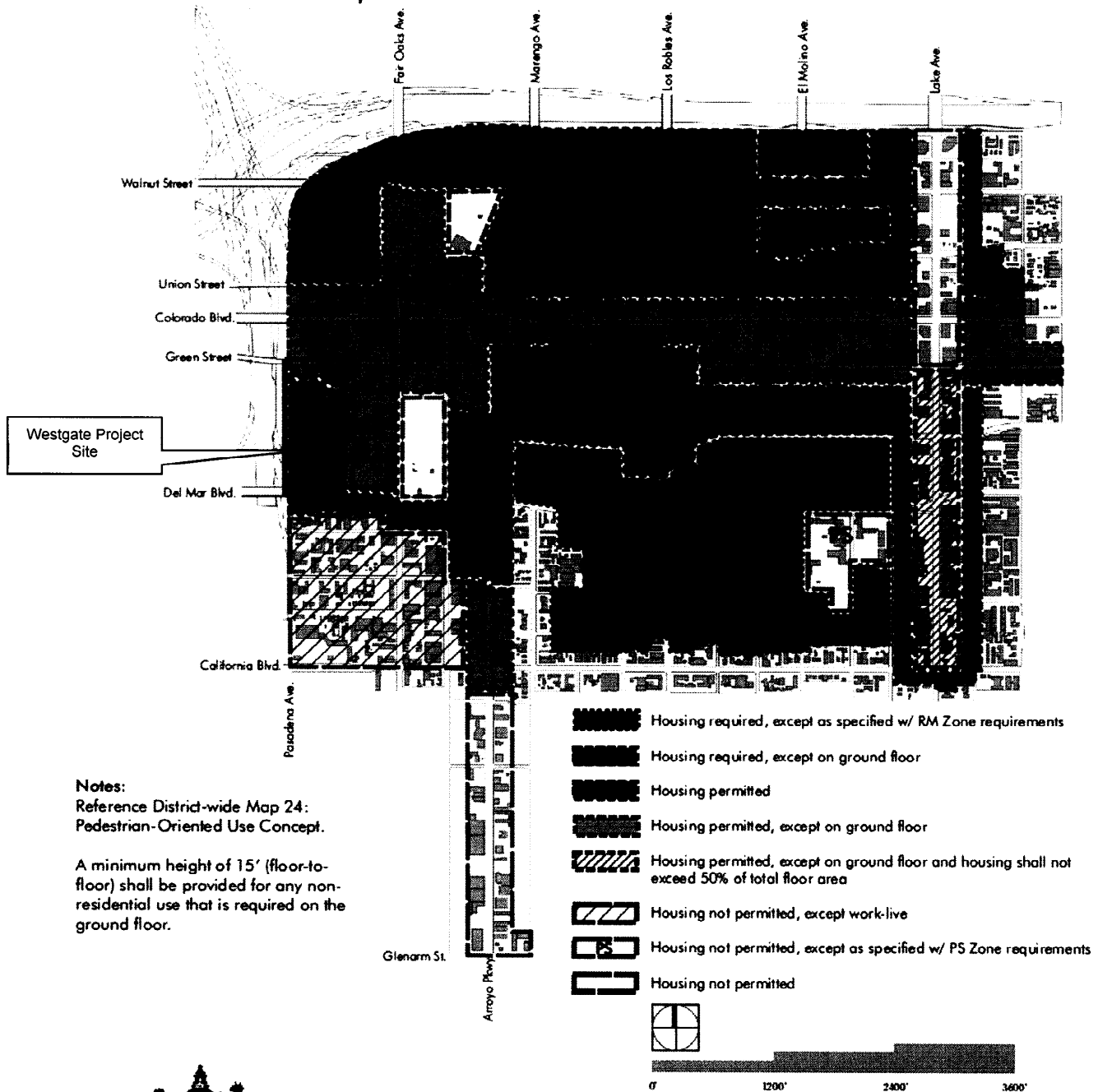
Section 4 DISTRICT-WIDE LAND USE CONCEPT

District-Wide Map 11: Land Use Character Concept



Section 4 DISTRICT-WIDE LAND USE CONCEPT

District-wide Map 12: Housing / Ground Floor Concept



Notes:
Reference District-wide Map 24:
Pedestrian-Oriented Use Concept.

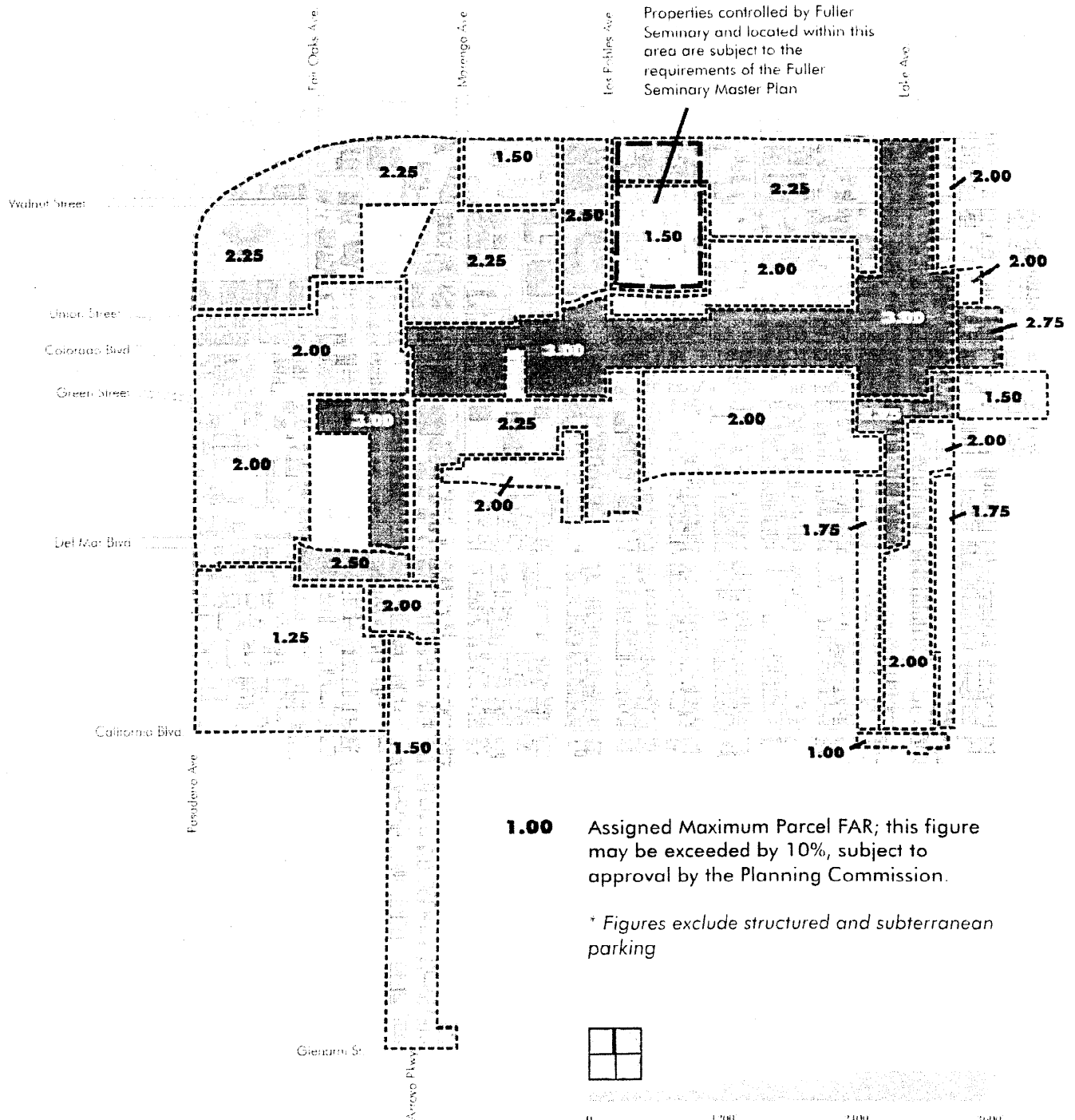
A minimum height of 15' (floor-to-floor) shall be provided for any non-residential use that is required on the ground floor.



Central District Specific Plan

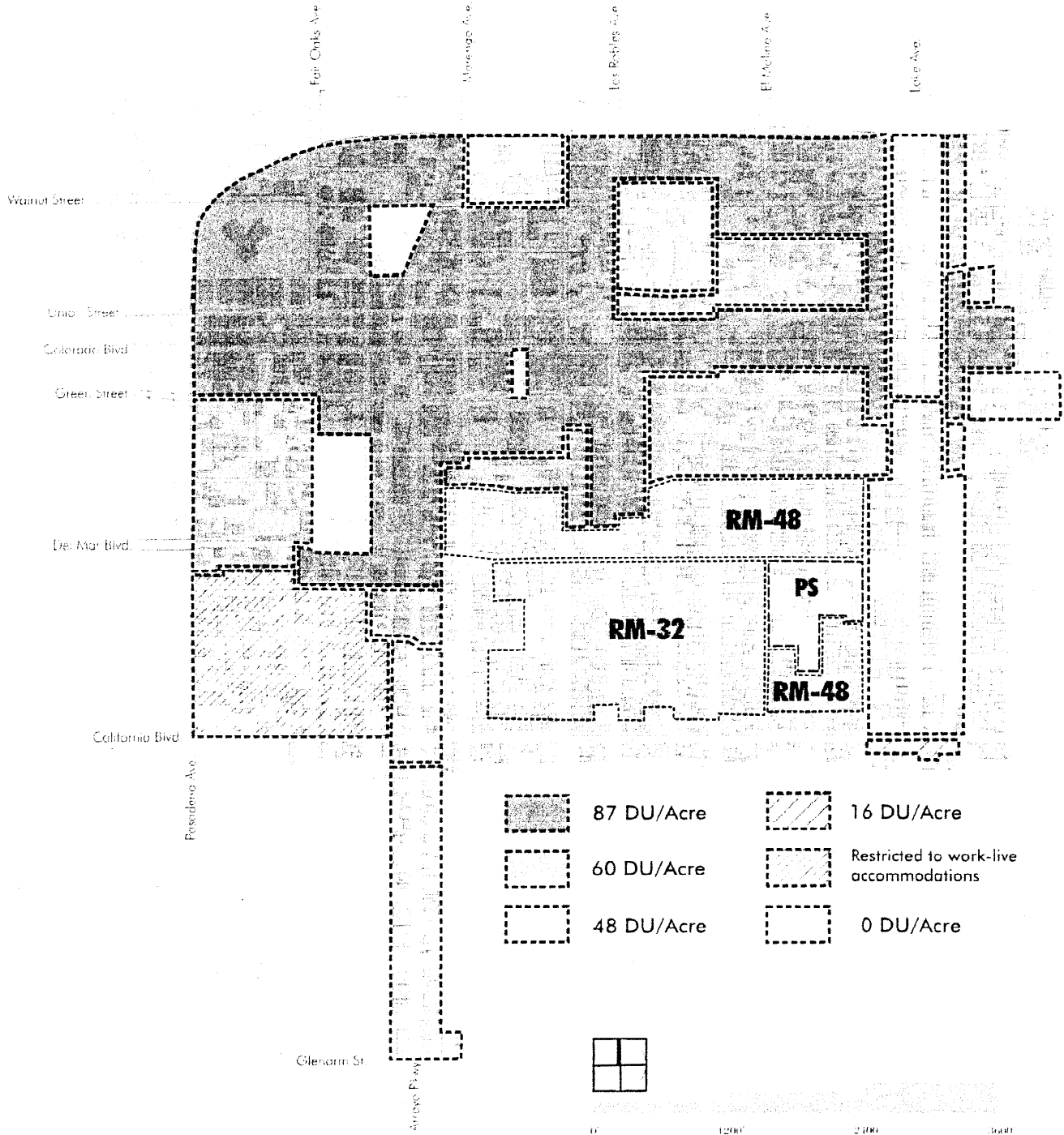
Section 4 DISTRICT-WIDE LAND USE CONCEPT

District-wide Map 14: Maximum FAR Concept



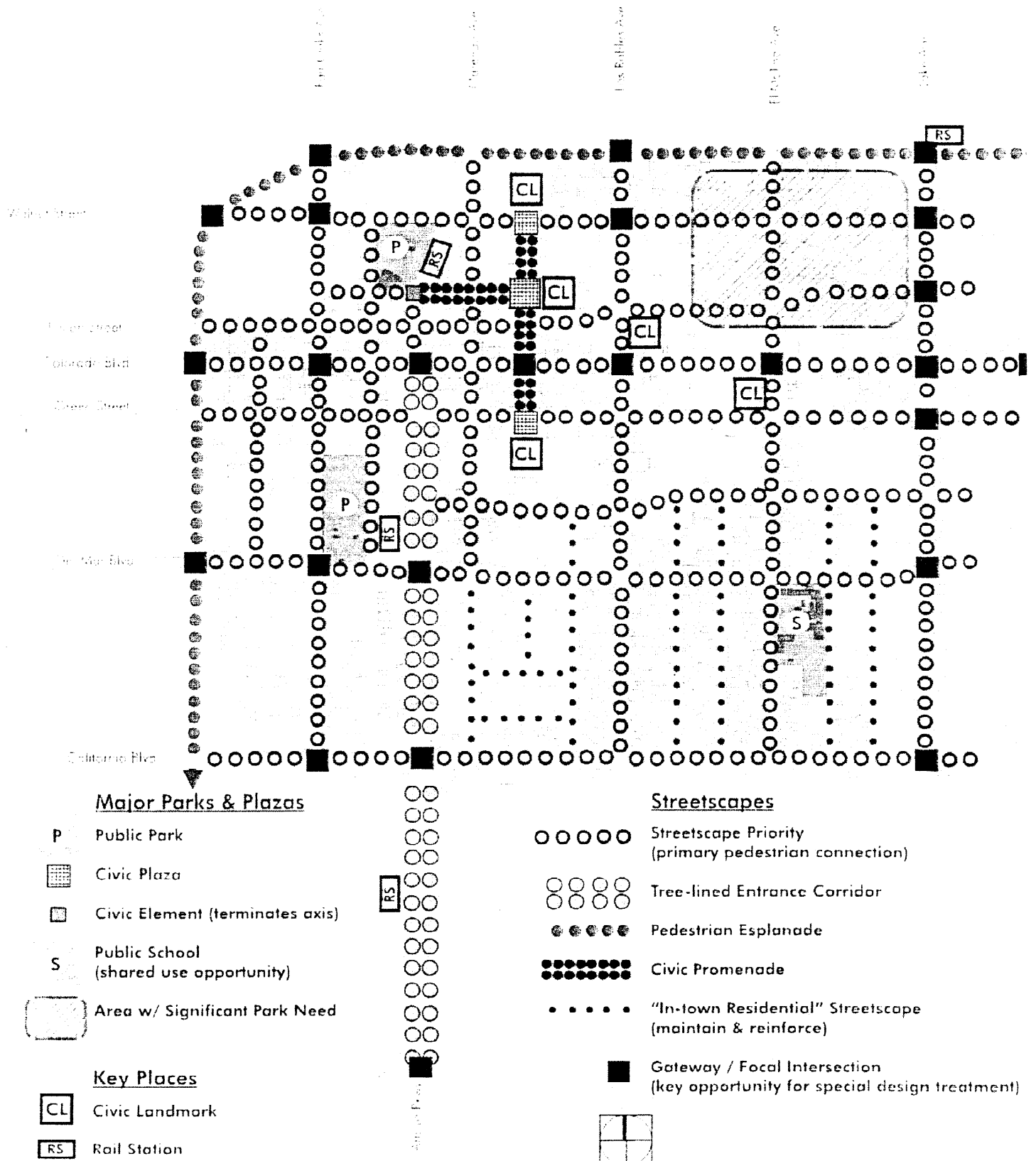
Section 4 **DISTRICT-WIDE LAND USE CONCEPT**

District-wide Map 15: Maximum Residential Density Concept



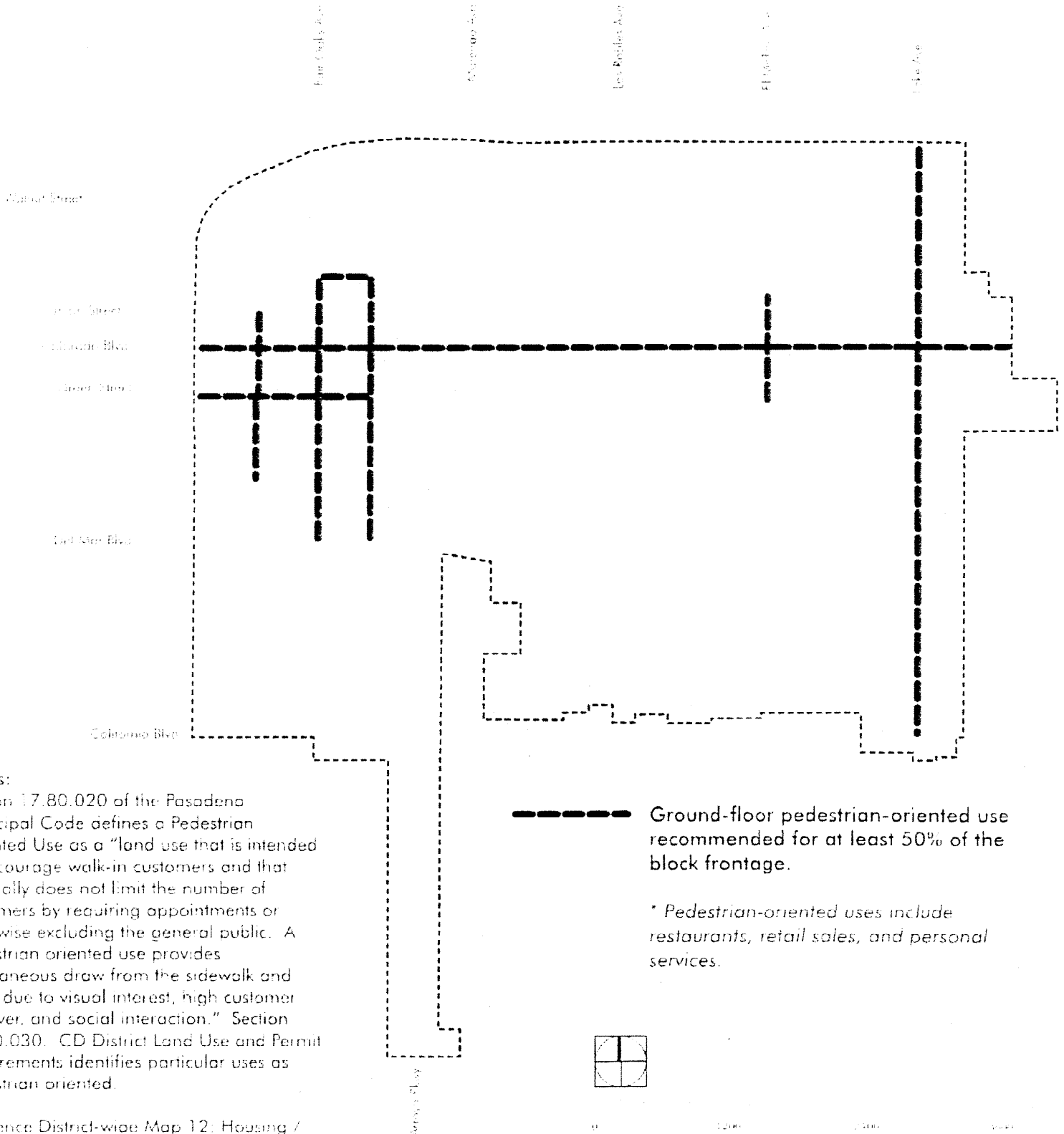
Section 6 DISTRICT-WIDE URBAN DESIGN CONCEPT

District-wide Map 22: Public Open Space Concept



Section 6 DISTRICT-WIDE URBAN DESIGN CONCEPT

District-wide Map 24: Pedestrian-Oriented Use Concept



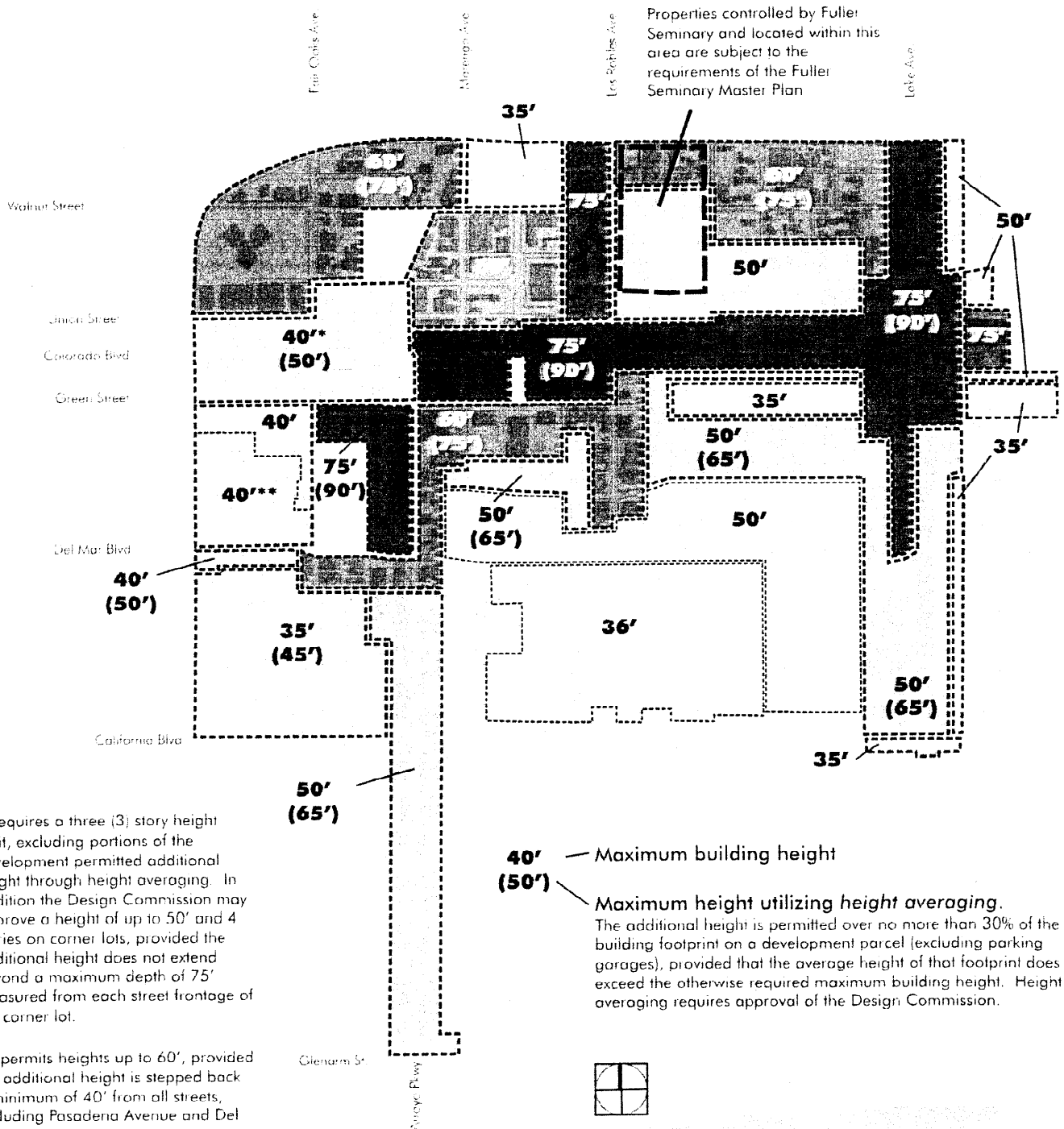
Notes:
 Section 17.80.020 of the Pasadena Municipal Code defines a Pedestrian Oriented Use as a "land use that is intended to encourage walk-in customers and that generally does not limit the number of customers by requiring appointments or otherwise excluding the general public. A pedestrian oriented use provides spontaneous draw from the sidewalk and street due to visual interest, high customer turnover, and social interaction." Section 17.30.030, CD District Land Use and Permit Requirements identifies particular uses as pedestrian oriented.

Reference: District-wide Map 12: Housing / Ground Floor Concept



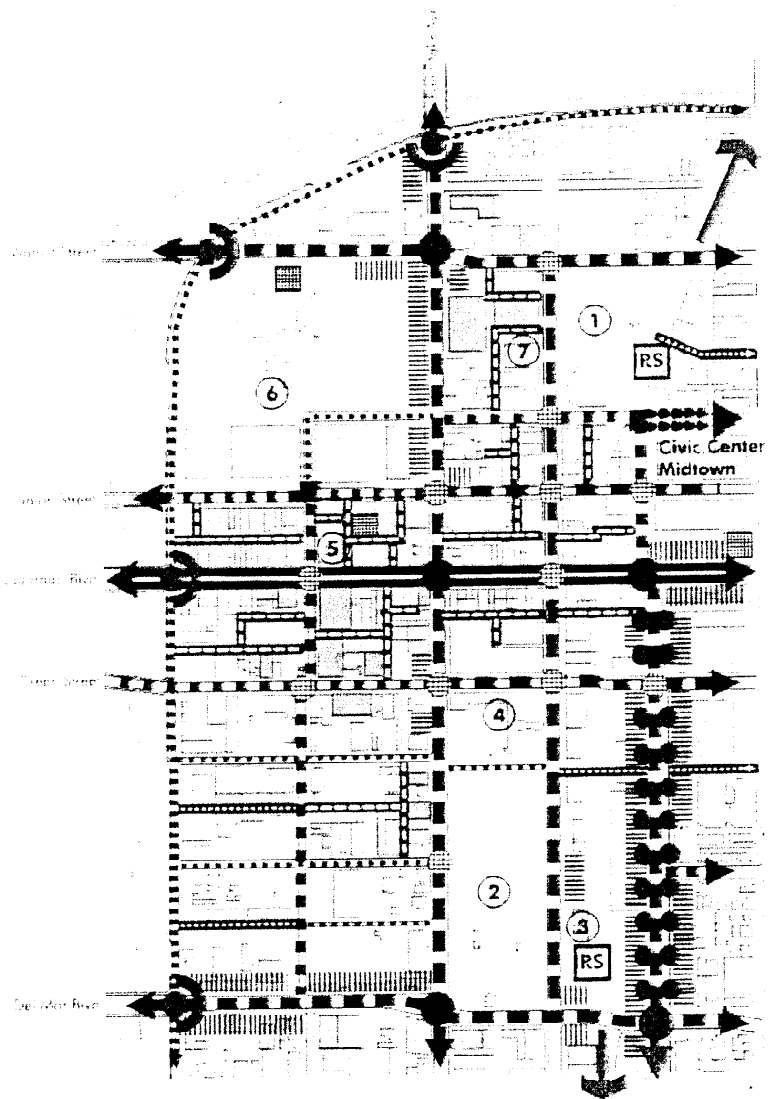
Section 6 DISTRICT-WIDE URBAN DESIGN CONCEPT

District-wide Map 25: Maximum Height Concept



Section 7 SUB-DISTRICT PLANNING CONCEPTS

Sub-district Map 1: Old Pasadena Linkage Concept



Key Buildings / Landmarks

1. Memorial Park
2. Central Park
3. Santa Fe Depot
4. Castle Green
5. One Colorado
6. Parsons Corporate Headquarters
7. Armory Center for the Arts

Key Places

- Central District Gateway
- Primary Focal Intersection
- Secondary Focal Intersection
- Important Pedestrian Crossing
- Principal Outdoor Space
- Civic Element (terminates axis)
- Rail Station

Key Connections

- Main Commercial Boulevard (streetscape priority / strong pedestrian-orientation)
- Multi-modal Corridor (streetscape priority / strong pedestrian-orientation)
- Multi-modal Corridor / Entrance Corridor (continues tree-lined processional from freeway)
- Primary Pedestrian Connection (streetscape priority)
- Secondary Pedestrian Connection
- Alley Walkway
- Mid-block Passage
- Civic Promenade
- Opportunity to "Repair Street Edge" (enhance pedestrian-orientation thru building or landscape treatment)
- Rail Tracks



0 1000 2000



Central District Specific Plan