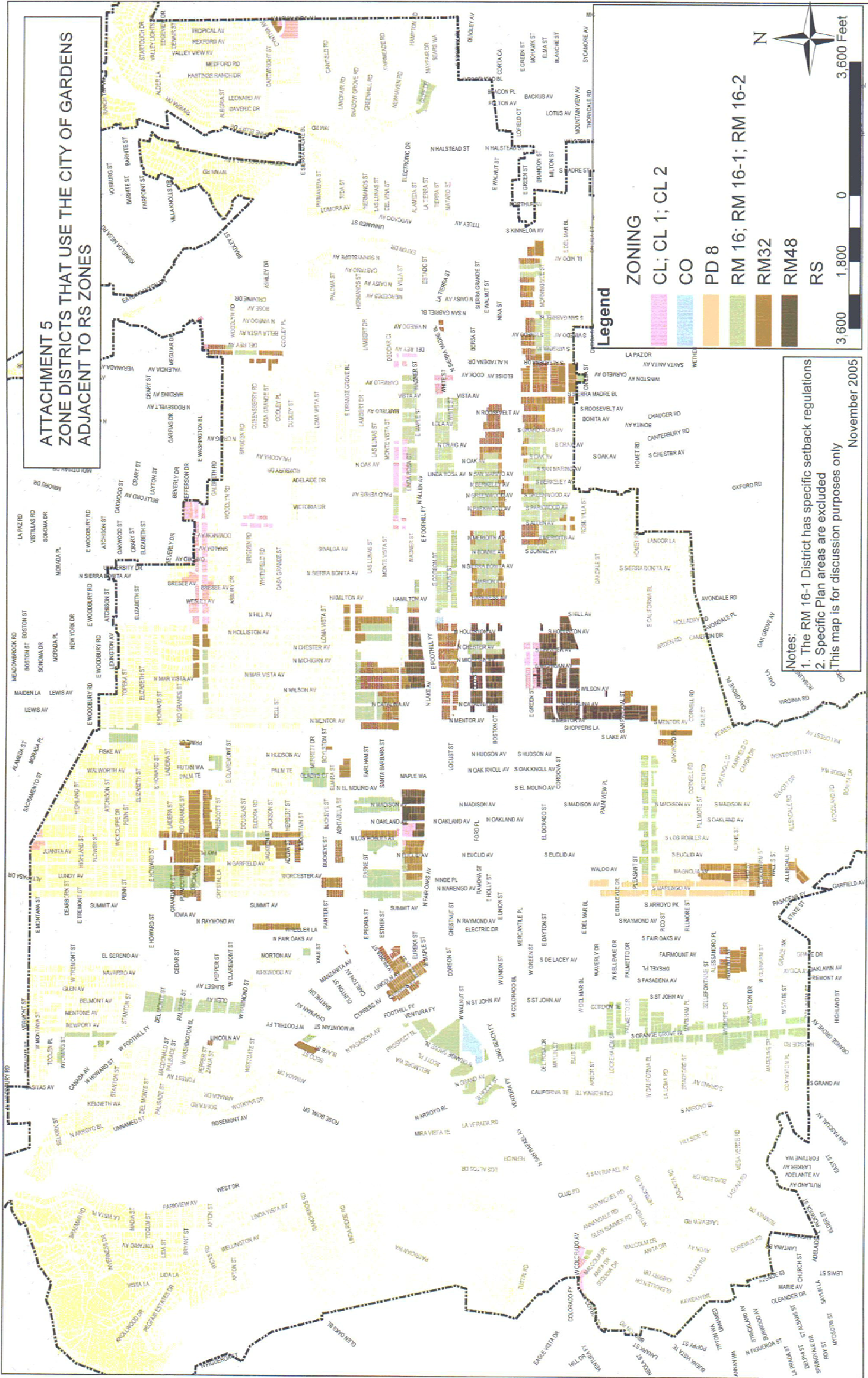


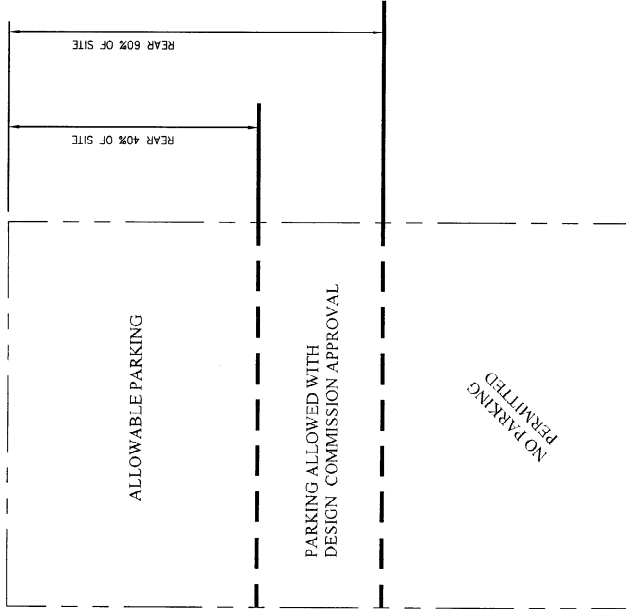
**ATTACHMENT 5  
ZONE DISTRICTS THAT USE THE CITY OF GARDENS  
ADJACENT TO RS ZONES**



**Notes:**  
 1. The RM 16-1 District has specific setback regulations  
 2. Specific Plan areas are excluded  
 This map is for discussion purposes only

November 2005

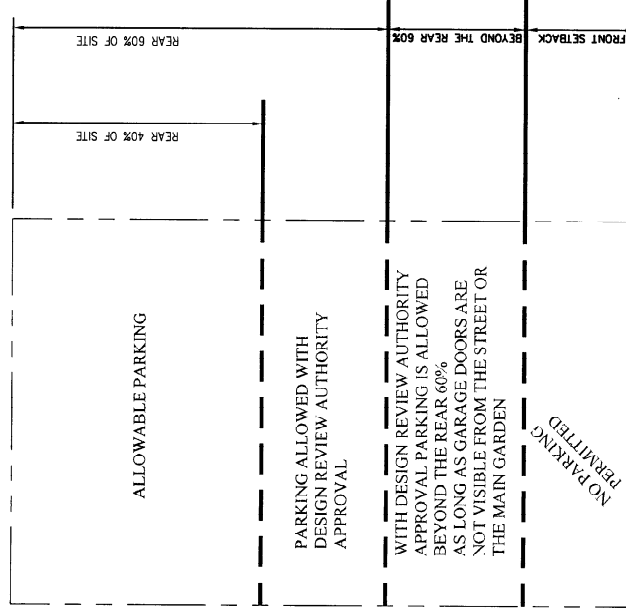
REAR



1A

CURRENT CODE

REAR



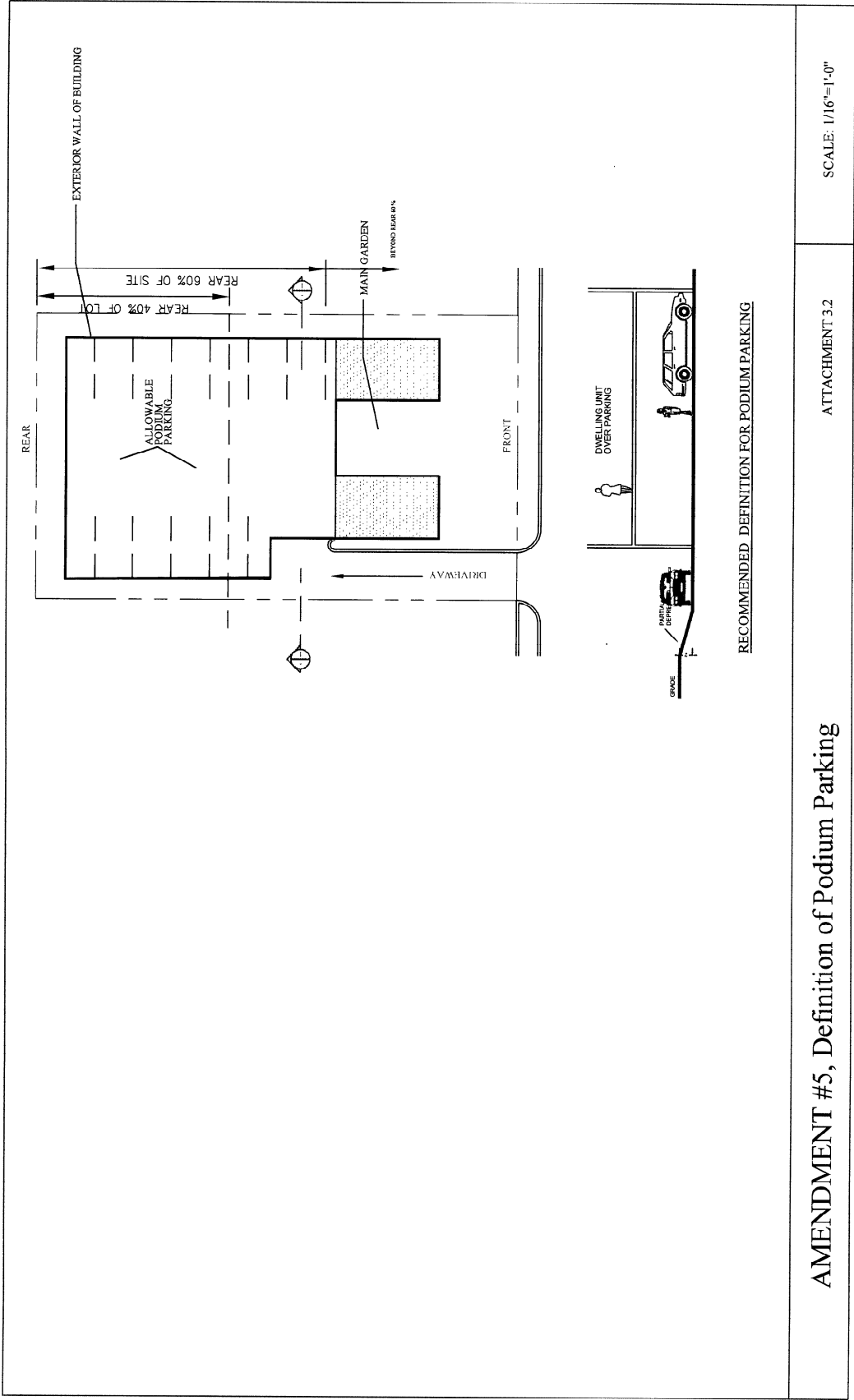
1B

RECOMMENDED

### AMENDMENT #2, Location of Surface Parking

ATTACHMENT 3.1

SCALE: 1/16"=1'-0"

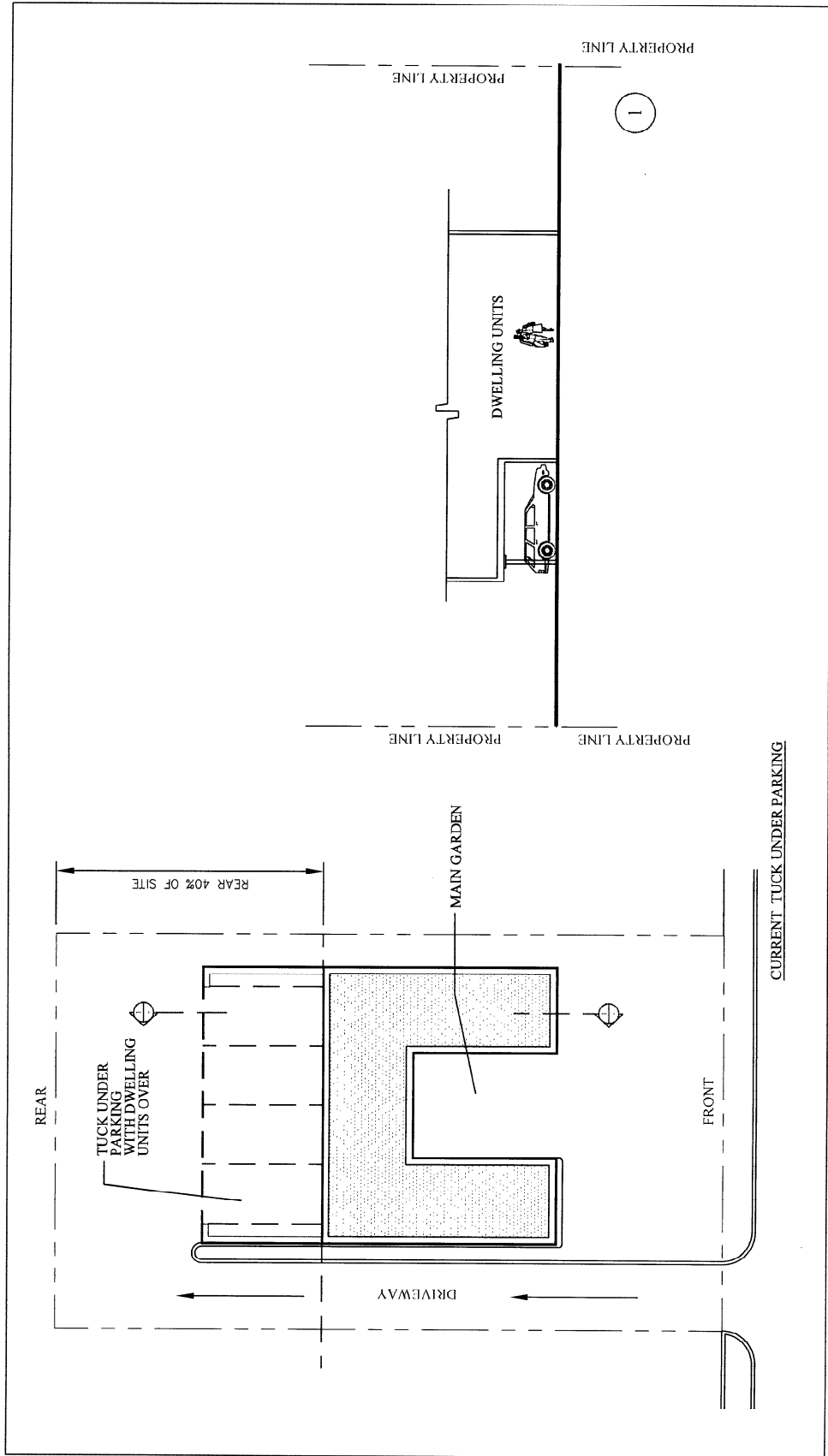


RECOMMENDED DEFINITION FOR PODIUM PARKING

AMENDMENT #5, Definition of Podium Parking

ATTACHMENT 3.2

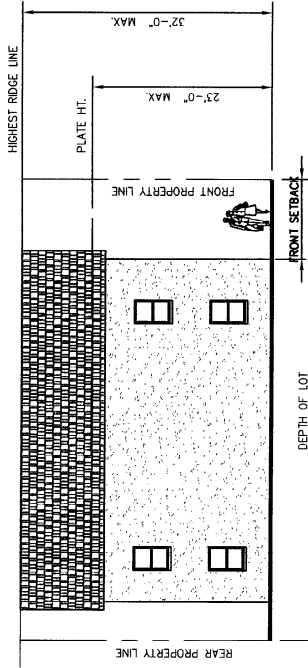
SCALE: 1/16"=1'-0"



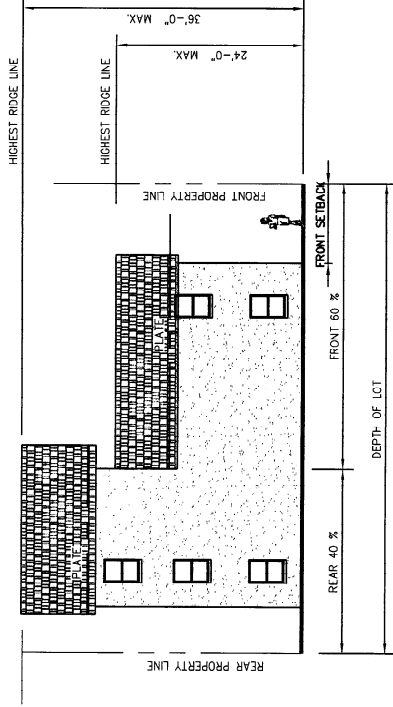
**AMENDMENT #6, Definition of Tuck Under Parking**

ATTACHMENT 3.3

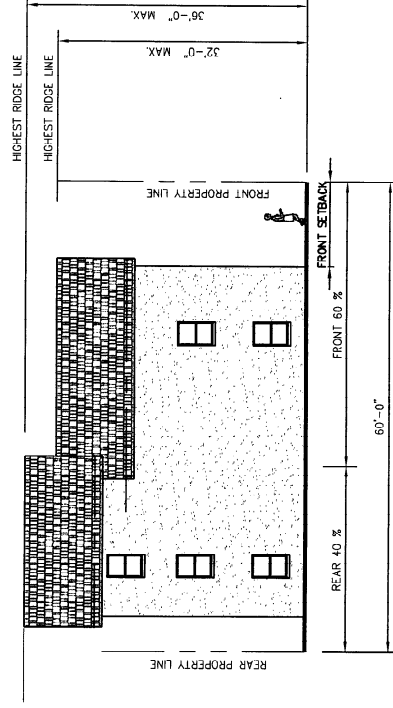
SCALE: 1/16"=1'-0"



LOTS LESS THAN 60' IN WIDTH IN RM32 ZONING DISTRICT  
(CURRENT CODE)



LOTS 60' IN WIDTH OR GREATER IN RM32 ZONING DISTRICT  
(CURRENT CODE)

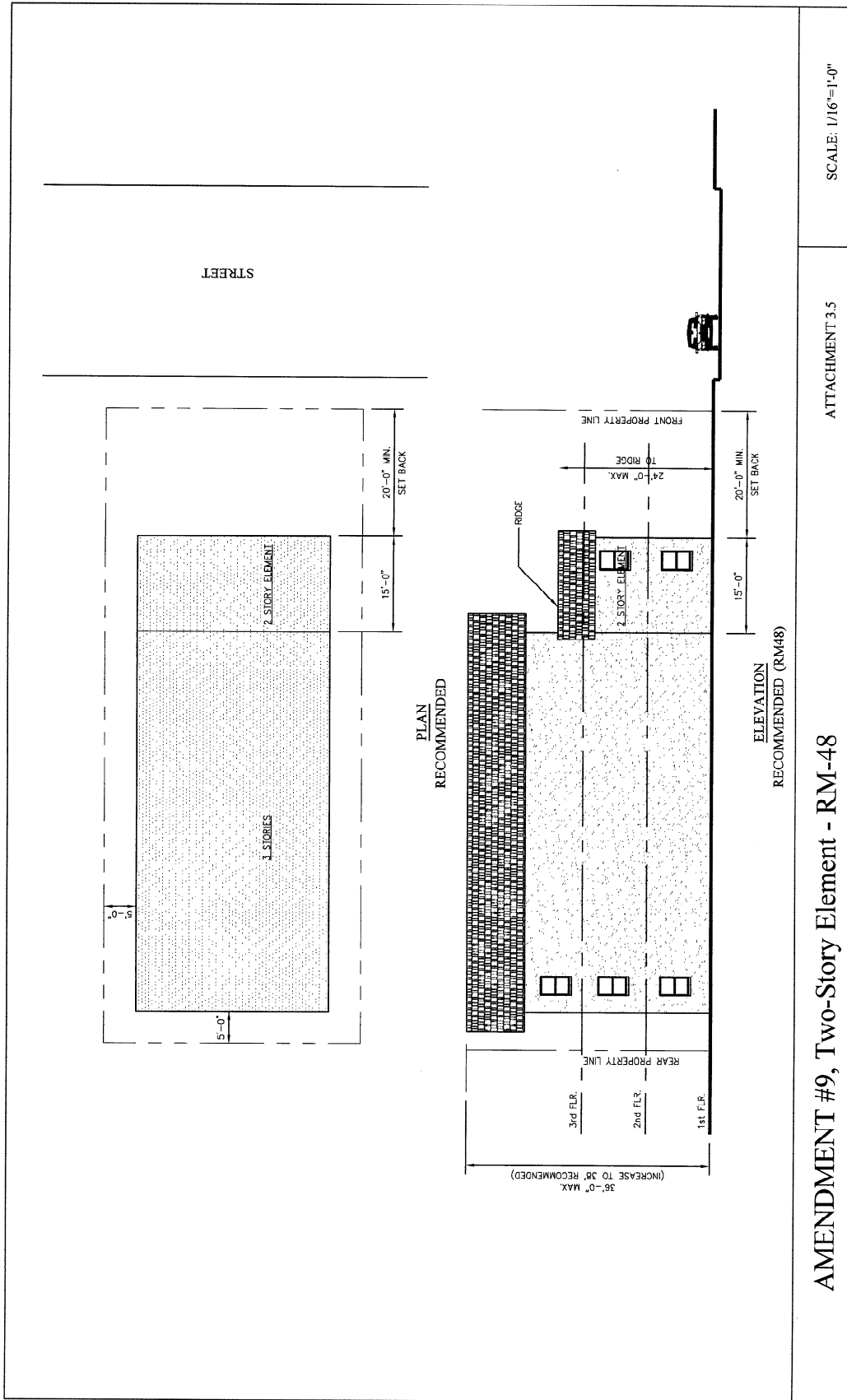


RECOMMENDED REGULATION FOR LOTS 60' IN WIDTH OR GREATER IN RM32 ZONING DISTRICT  
ADDITIONAL HEIGHT IS ALLOWED ONLY WITH APPROVAL OF DESIGN REVIEW AUTHORITY AND ONLY WHEN LOT IS ADJACENT TO CL, COOR RMDISTRICT

AMENDMENT #8, Building Heights on RM-32 Lots

ATTACHMENT 3.4

SCALE: 1/16"=1'-0"



AMENDMENT #9, Two-Story Element - RM-48

ATTACHMENT 3.5

SCALE: 1/16"=1'-0"