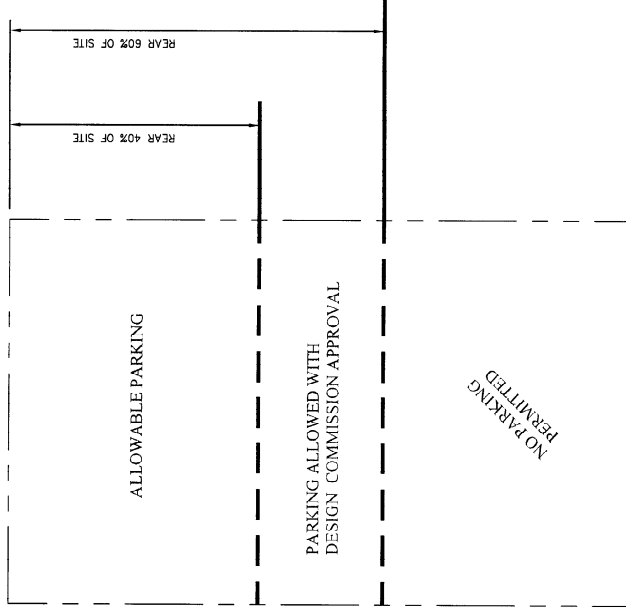


ATTACHMENT 3 – ILLUSTRATIONS

| ILLUSTRATION | AMENDMENT NO. | ATTACHMENT NO. |
|---|---------------|----------------|
| Surface Parking | 2 | 3.1 |
| Podium Parking | 5 | 3.2 |
| Tuck-Under Parking | 6 | 3.3 |
| Building Height on RM-32 Lots | 8 | 3.4 |
| One-story Element– RM-16, 32 and 48 | 9 | 3.5 |
| What Qualifies as a One-Story Element | 10 | 3.6 |
| Height in RM-48 | 11 | 3.7 |
| Wall Height | 12 | 3.8 |
| Multi-Family Structures Adjacent to RS District | 13 | 3.9 |

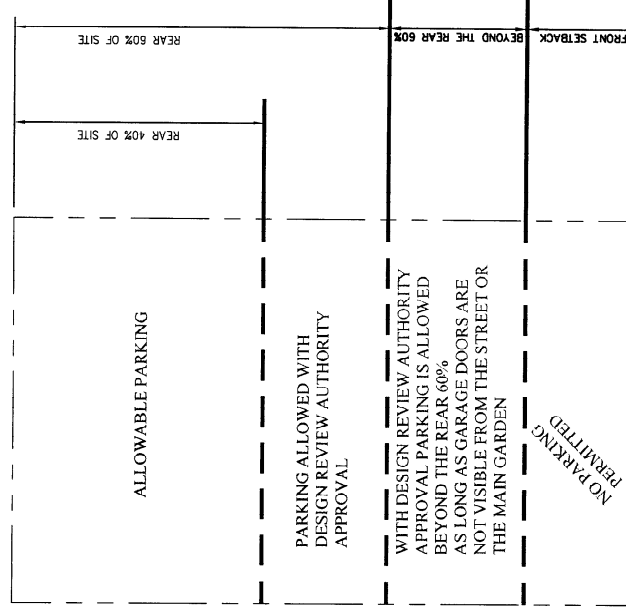
REAR



1A

CURRENT CODE

REAR



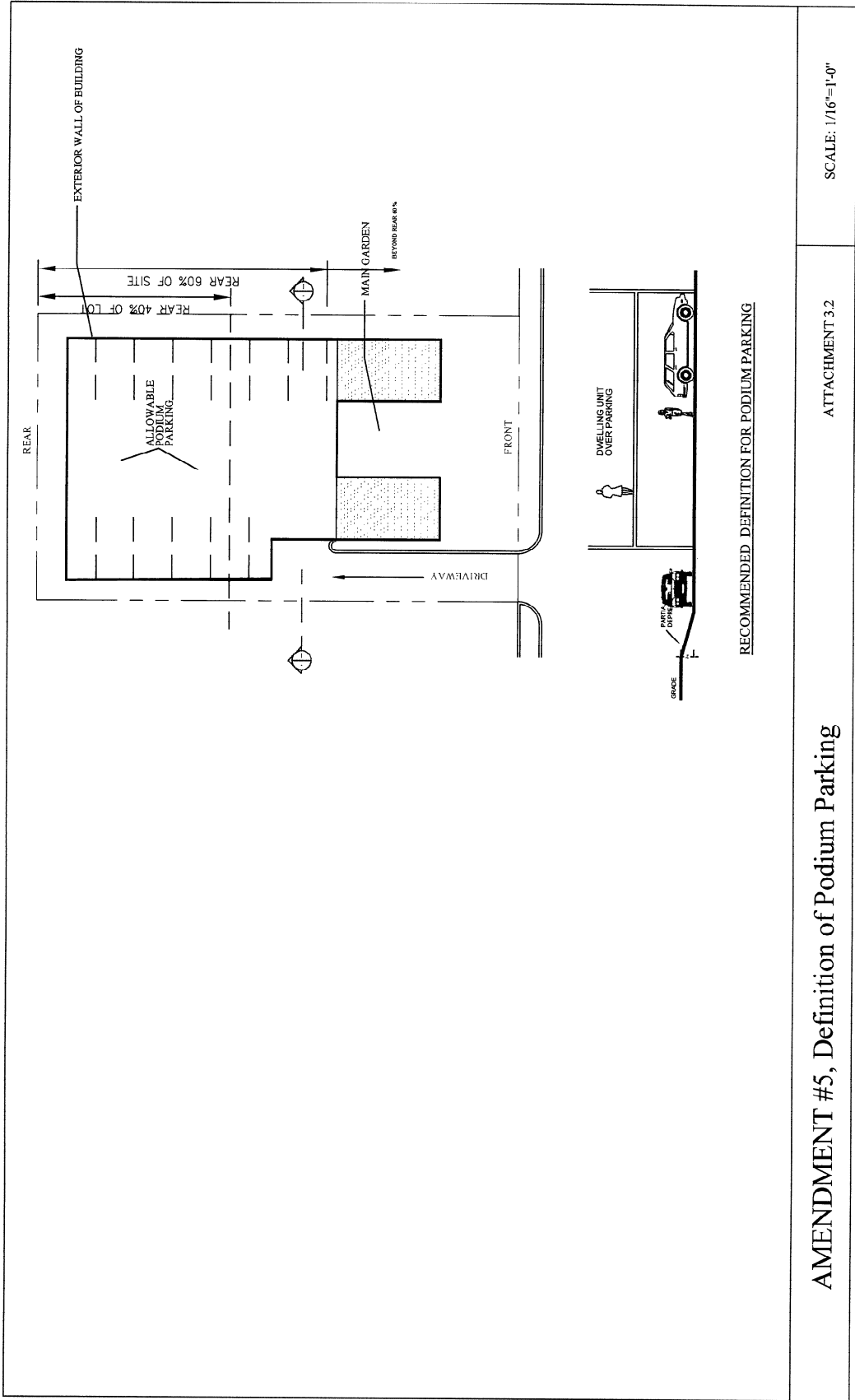
1B

RECOMMENDED

AMENDMENT #2, Location of Surface Parking

ATTACHMENT 3.1

SCALE: 1/16"=1'-0"

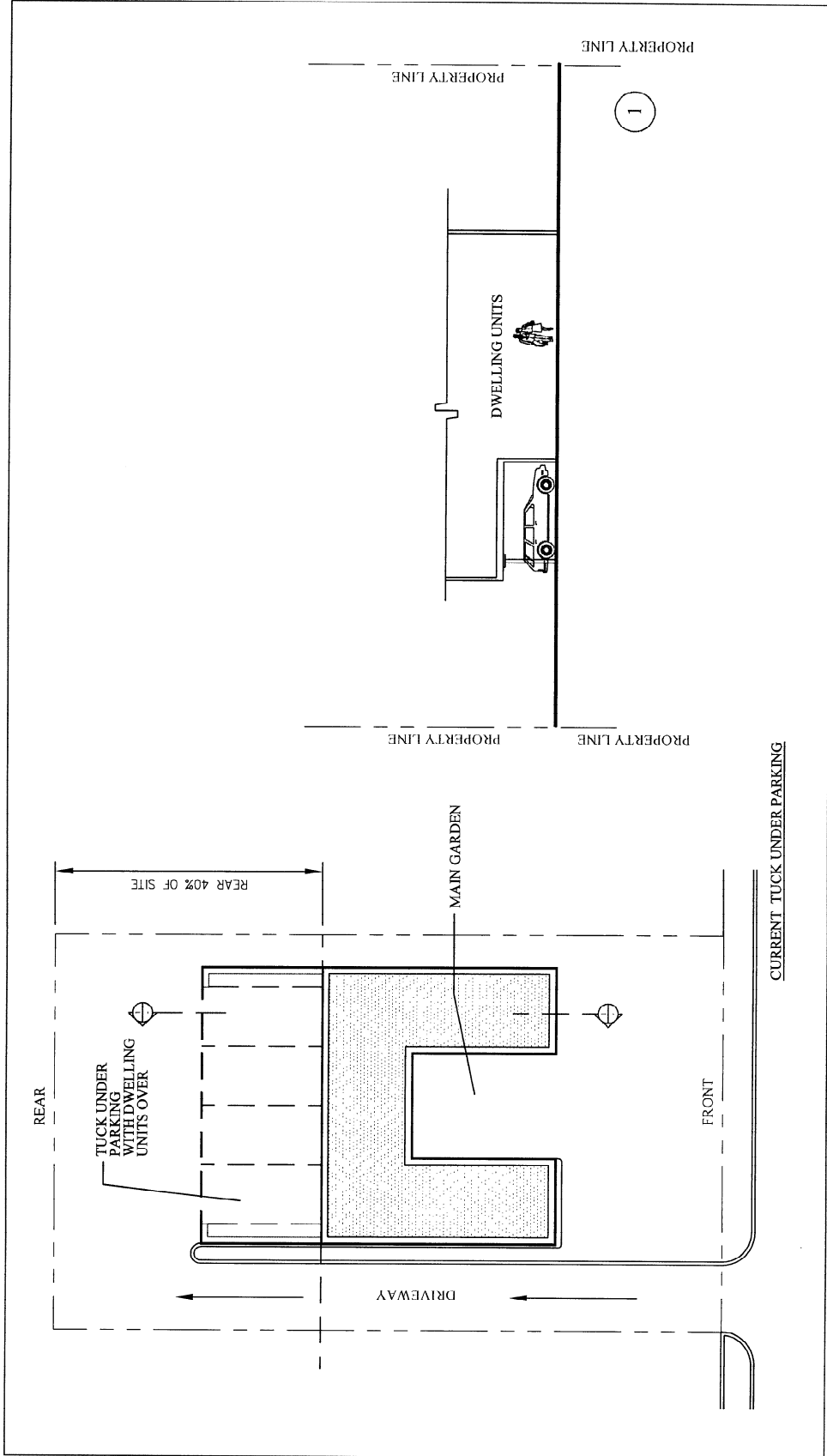


RECOMMENDED DEFINITION FOR PODIUM PARKING

AMENDMENT #5, Definition of Podium Parking

ATTACHMENT 3.2

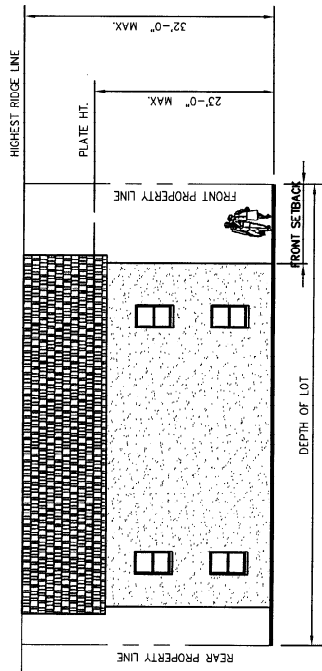
SCALE: 1/16"=1'-0"



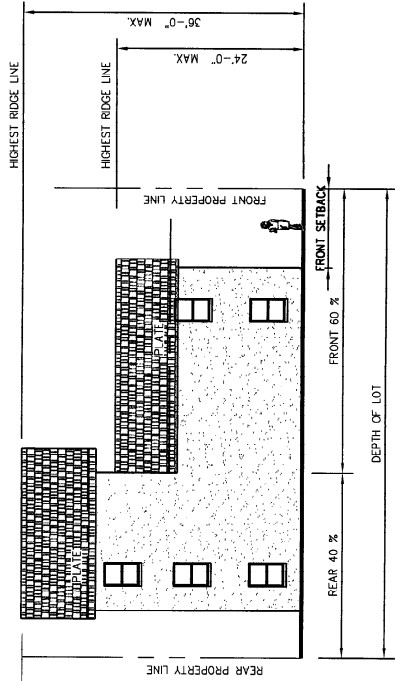
AMENDMENT #6, Definition of Tuck Under Parking

ATTACHMENT 3.3

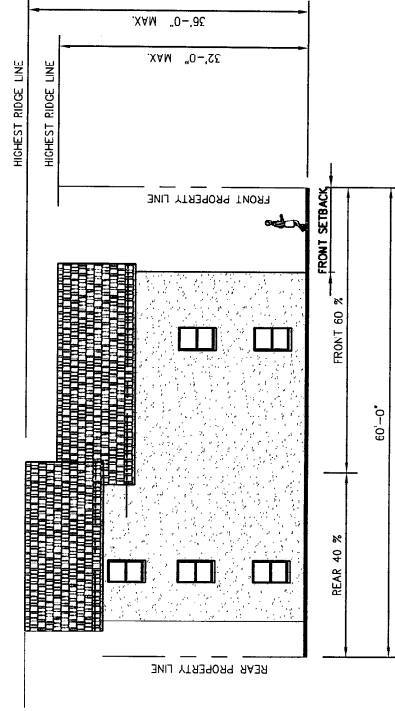
SCALE: 1/16"=1'-0"



LOTS LESS THAN 60' IN WIDTH IN RM32 ZONING DISTRICT
(CURRENT CODE)



LOTS 60' IN WIDTH OR GREATER IN RM 32 ZONING DISTRICT
(CURRENT CODE)

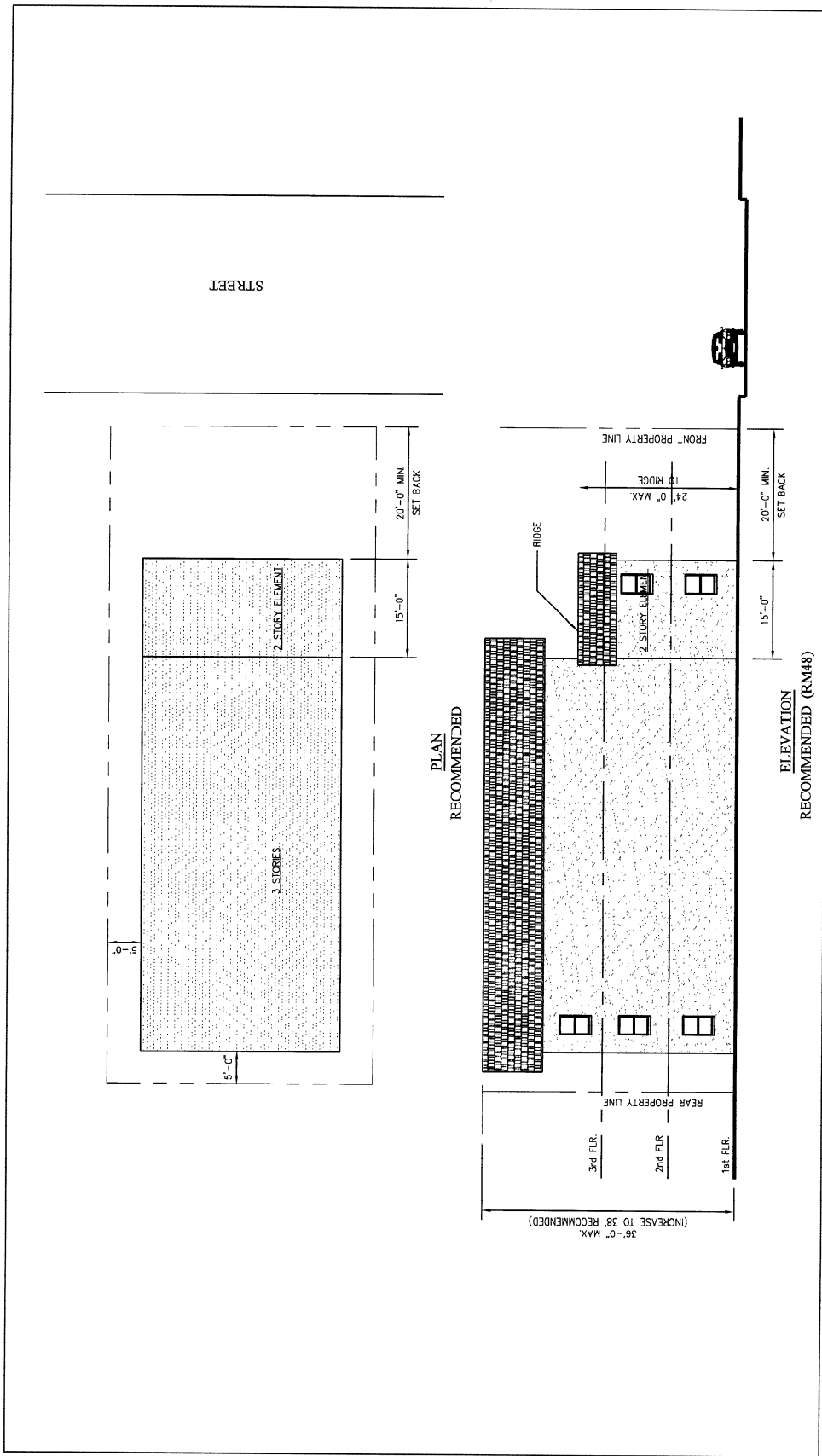


RECOMMENDED REGULATION FOR LOTS 60' IN WIDTH OR GREATER IN RM 32 ZONING DISTRICT
ADDITIONAL HEIGHT IS ALLOWED ONLY WITH APPROVAL OF DESIGN REVIEW AUTHORITY AND ONLY WHEN LOT IS ADJACENT TO CL, CO OR RM DISTRICT

AMENDMENT #8, Building Heights on RM-32 Lots

ATTACHMENT 3.4

SCALE: 1/16"=1'-0"



AMENDMENT #9, Two-Story Element - RM-48

ATTACHMENT 3.5

SCALE: 1/16"=1'-0"