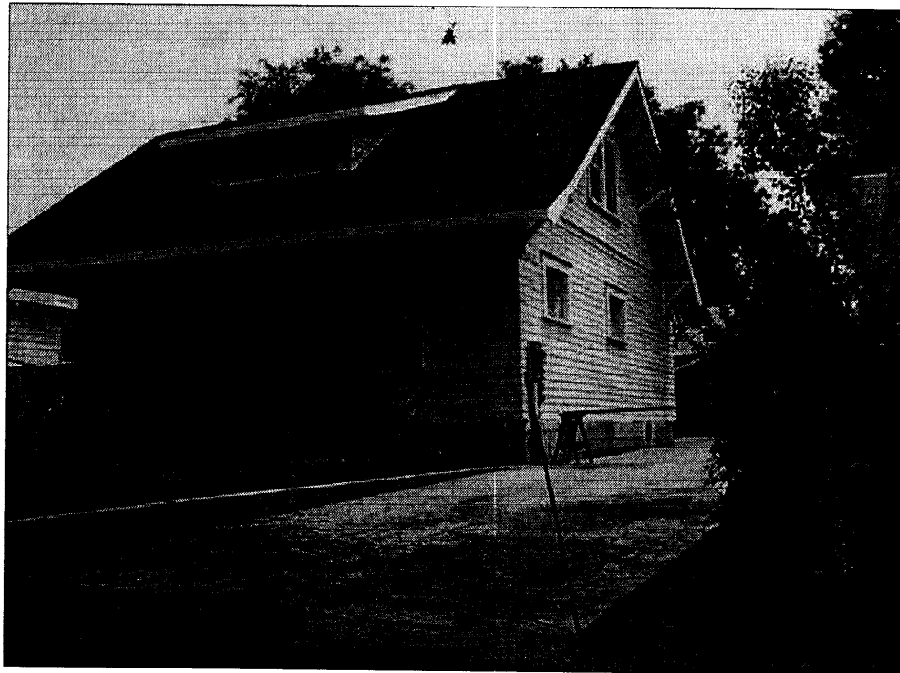


ATTACHMENT A

1022 N. MARENGO AVENUE



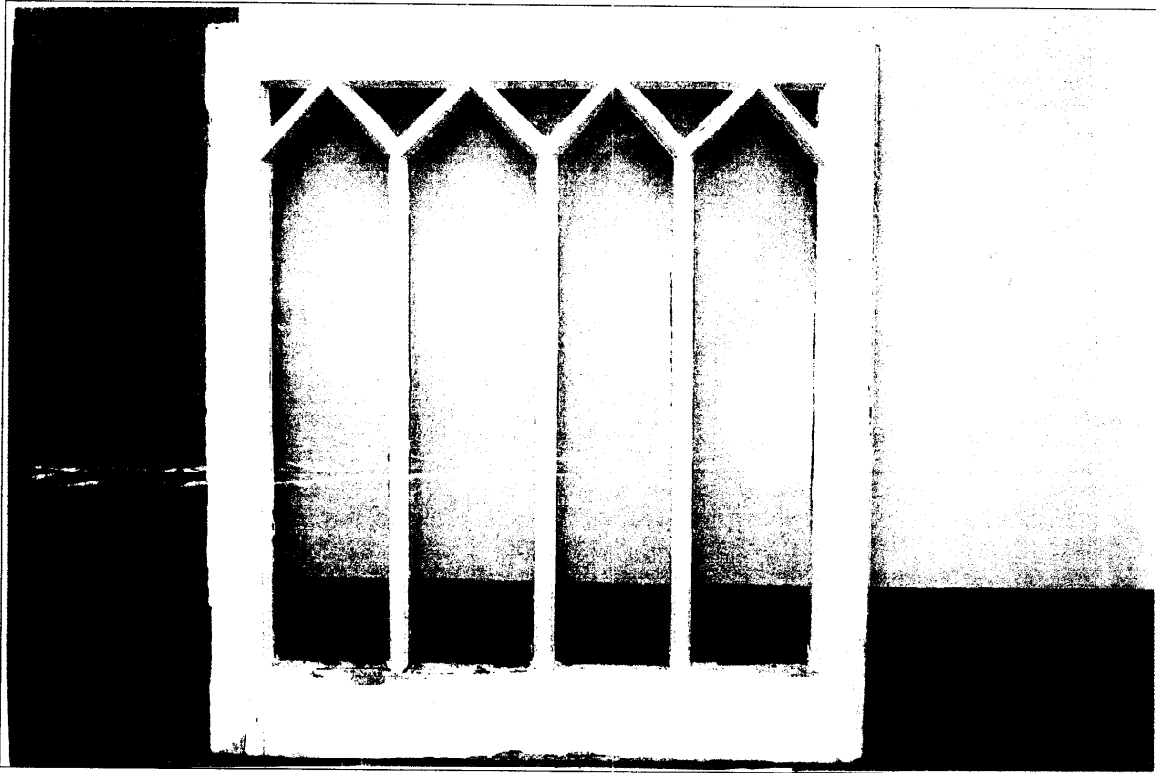
Approximate location of windows



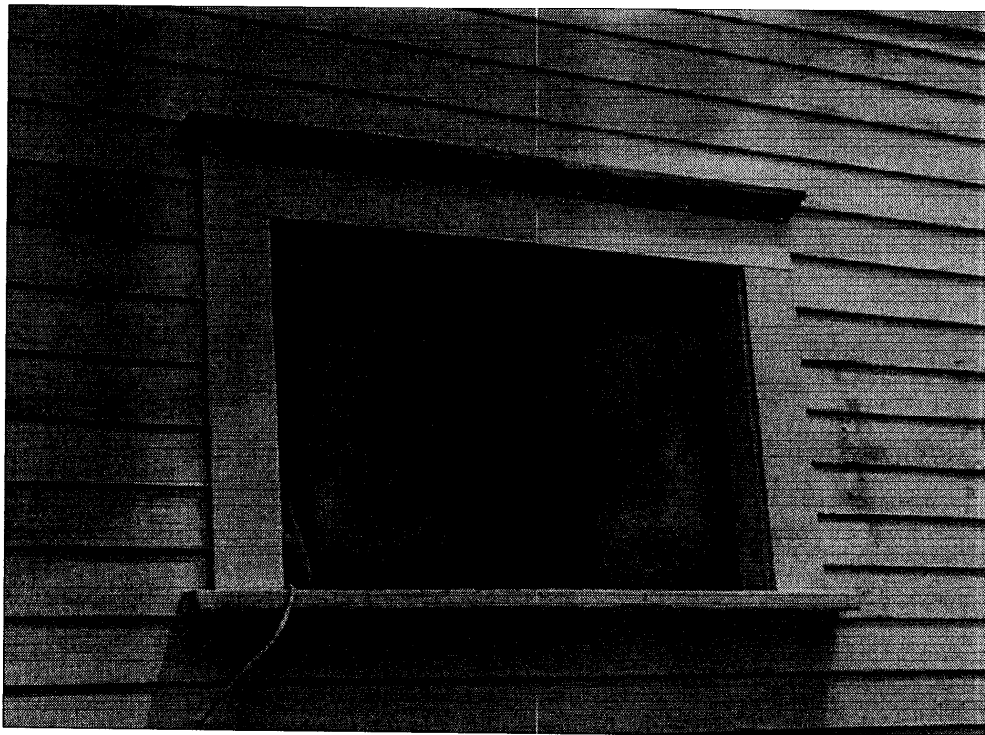
Front & south side elevations (with new openings for windows #1 & #2)

1022 N. MARENGO AVENUE

Window #1



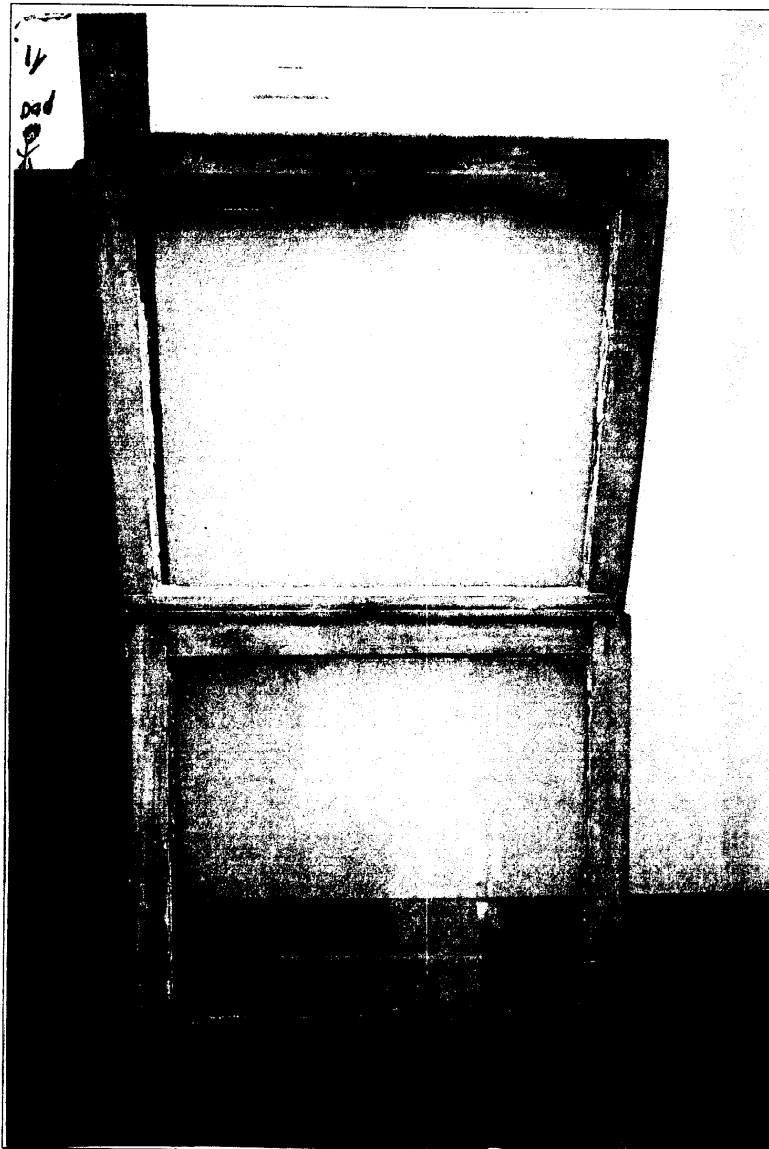
Original window (one of two in casement window pair) to be replaced with exact same material, style, size and construction.



Window #1 opening (photo taken on May 4, 2005)

1022 N. MARENGO AVENUE

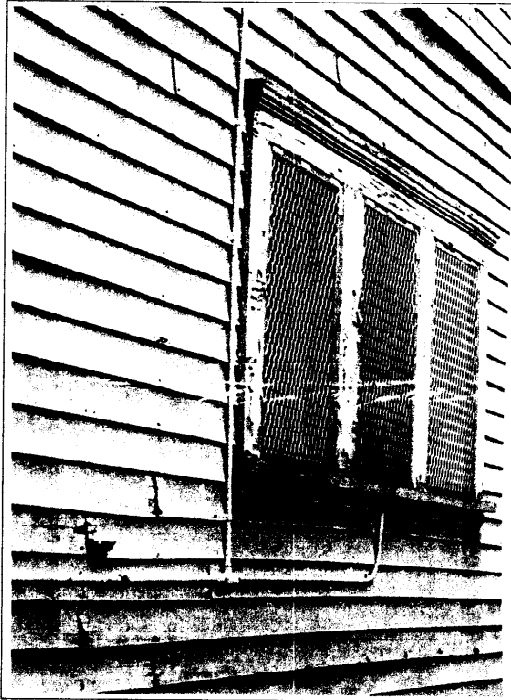
Window #2



Original window (one of the three double-hung windows) that was removed.

1022 N. MARENGO AVENUE

Window #2 Continued



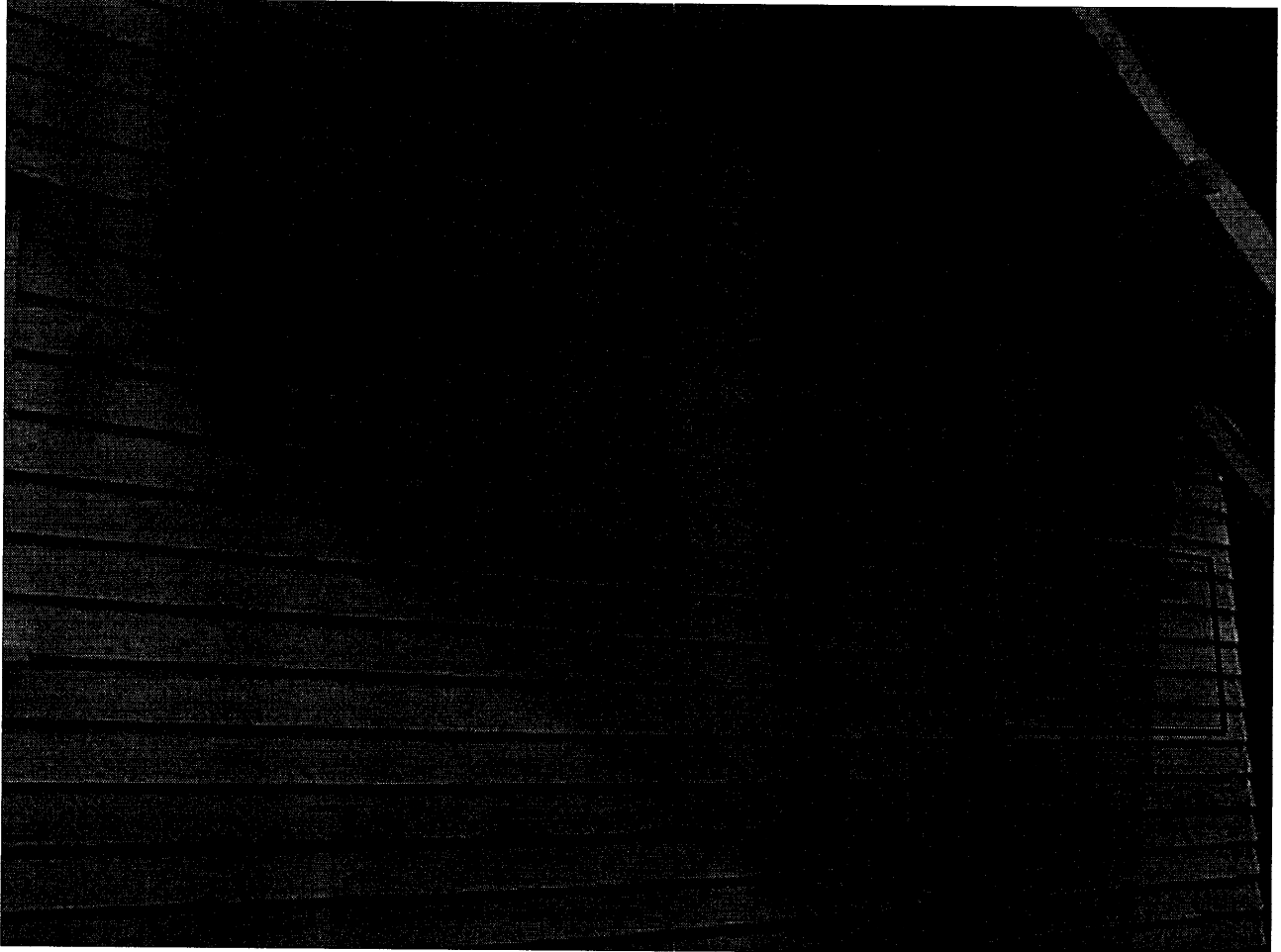
Previous window opening #2 covered in metal screening. New opening is decreased in size by 31" in width and 12" in height.



New window #2 (photo taken on May 4, 2005)

1022 N. MARENGO AVENUE

Window #3



Approximate location of original window #3, removed and replaced with wood siding