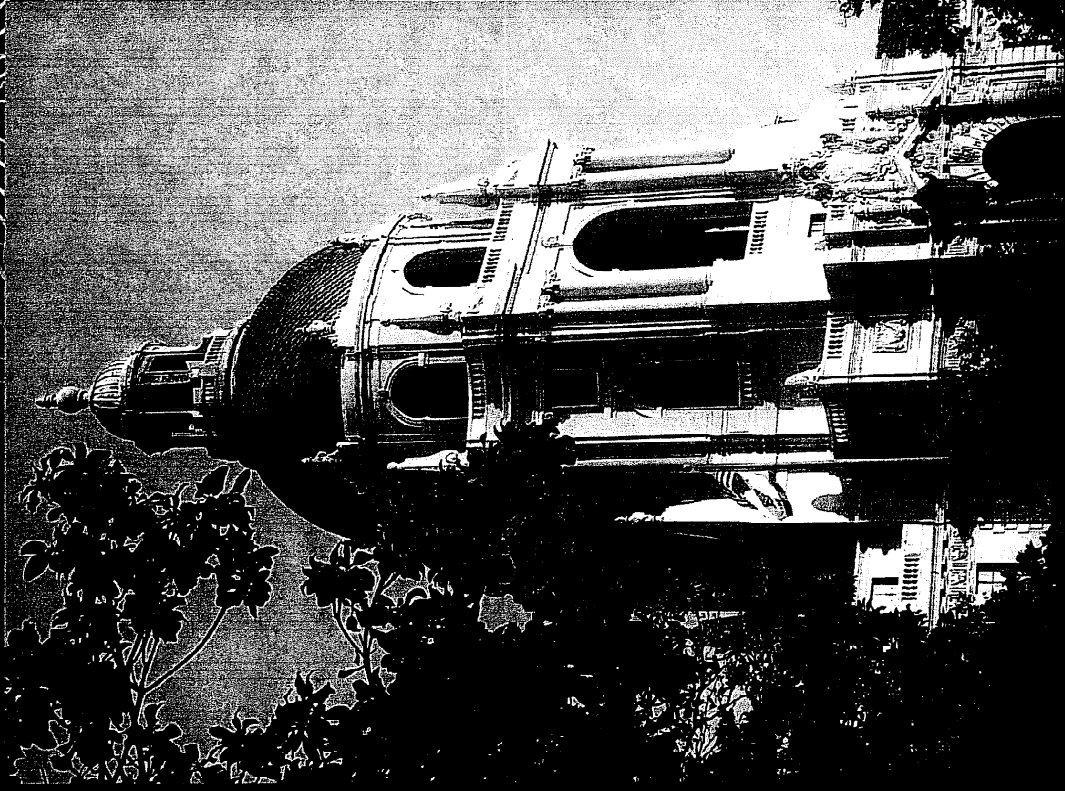


City Hall Seismic Retrofit Project

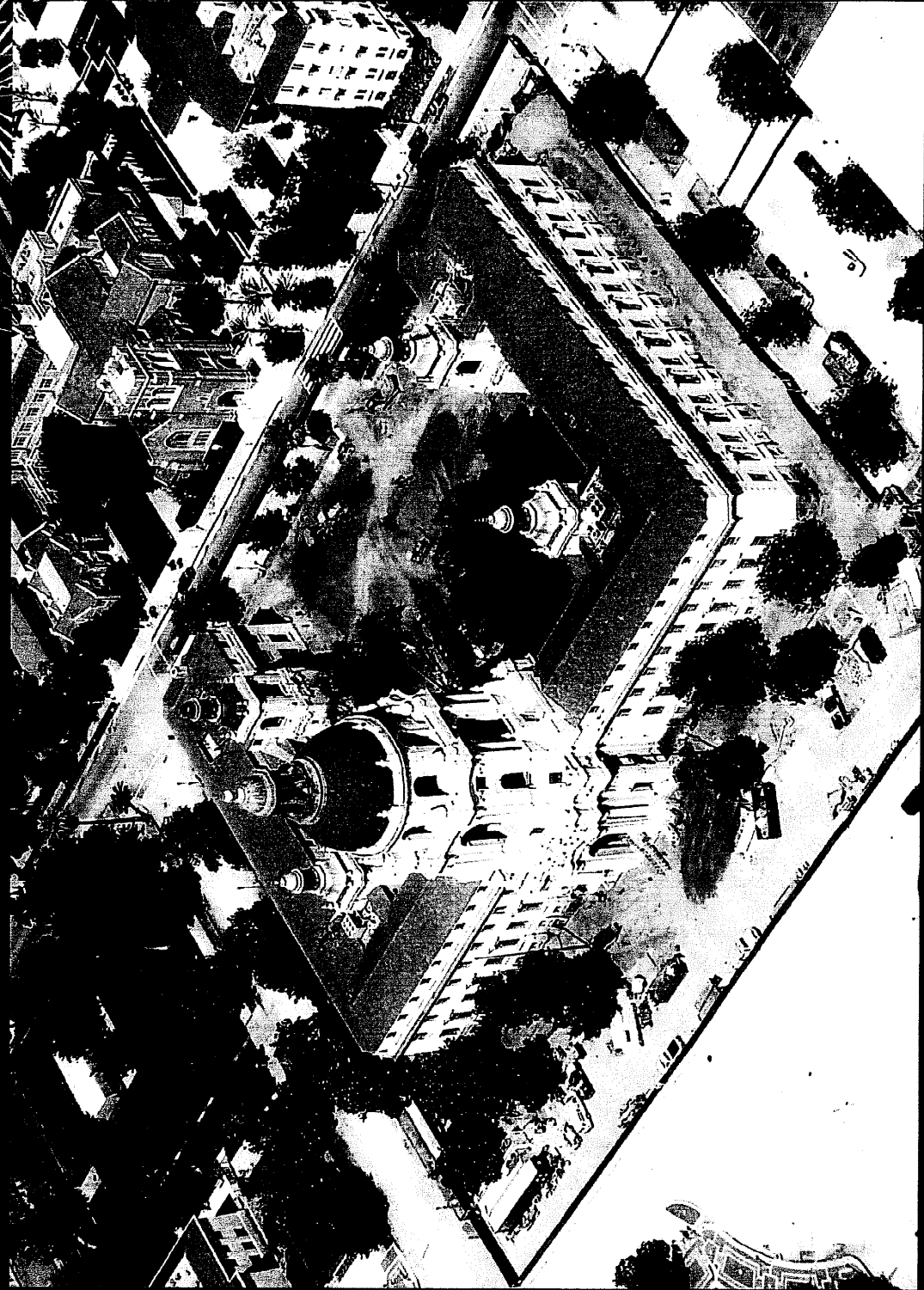


CONSTRUCTION PROGRESS UPDATE

Pasadena City Council

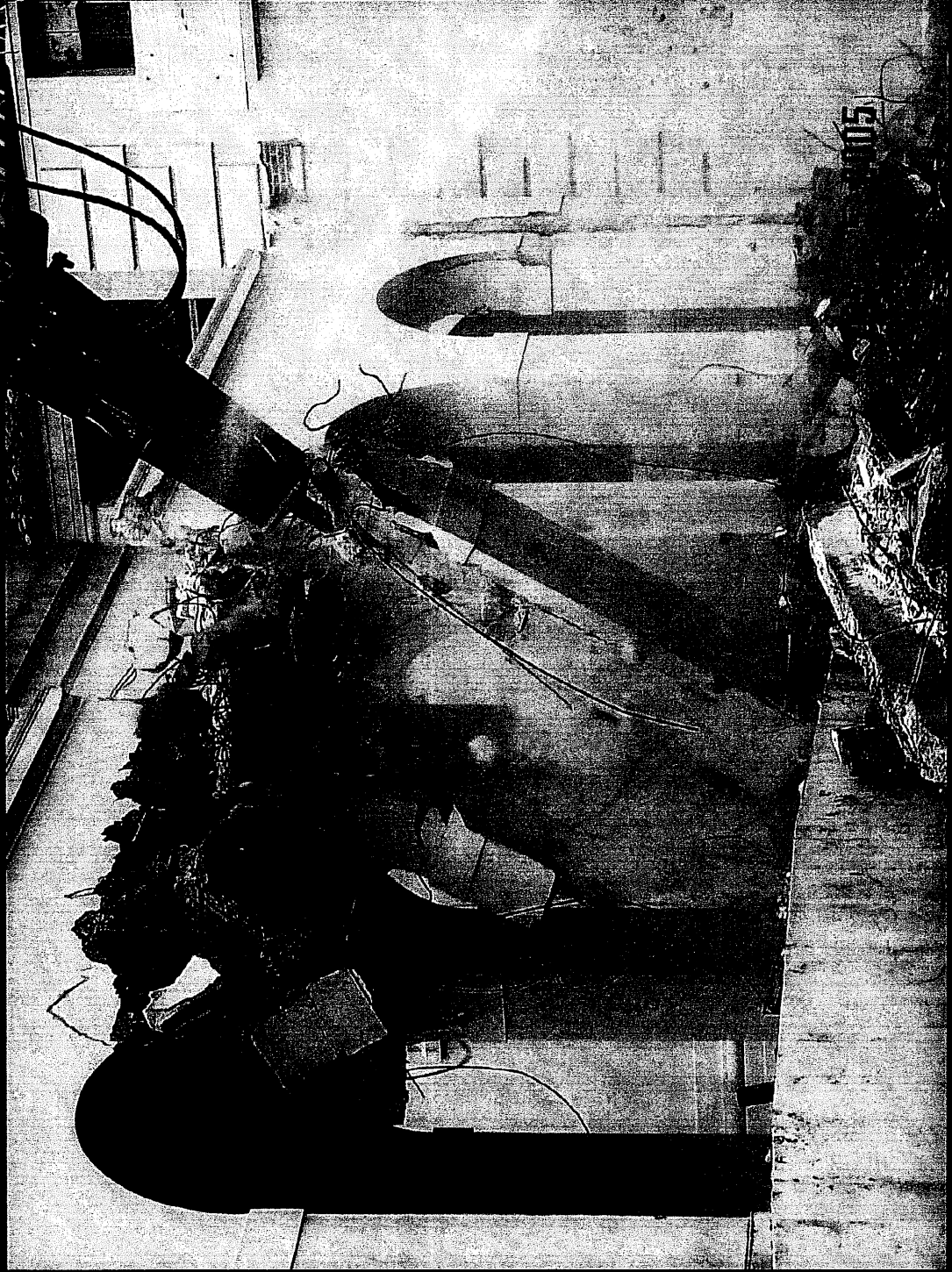
August 8, 2005

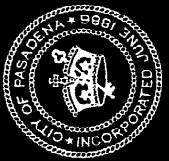
Aerial Photographs of Construction Activity
July 23, 2005



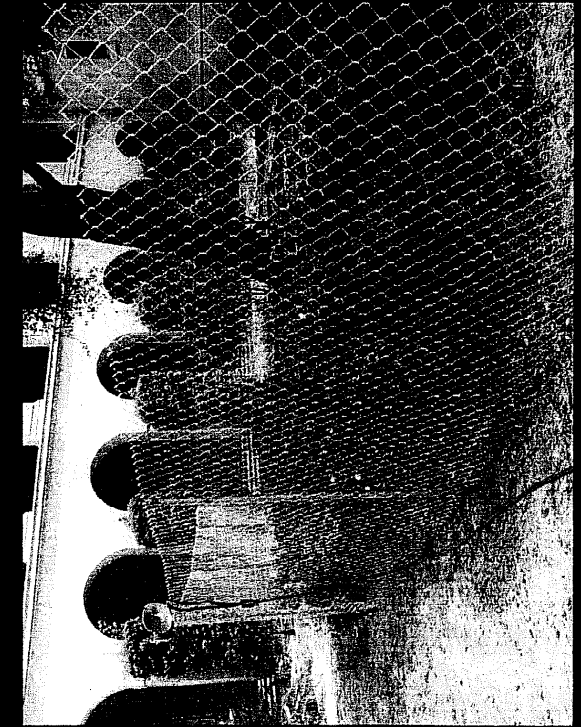


*Exterior Demolition Euclid Avenue
(East) Arcade Demolition*



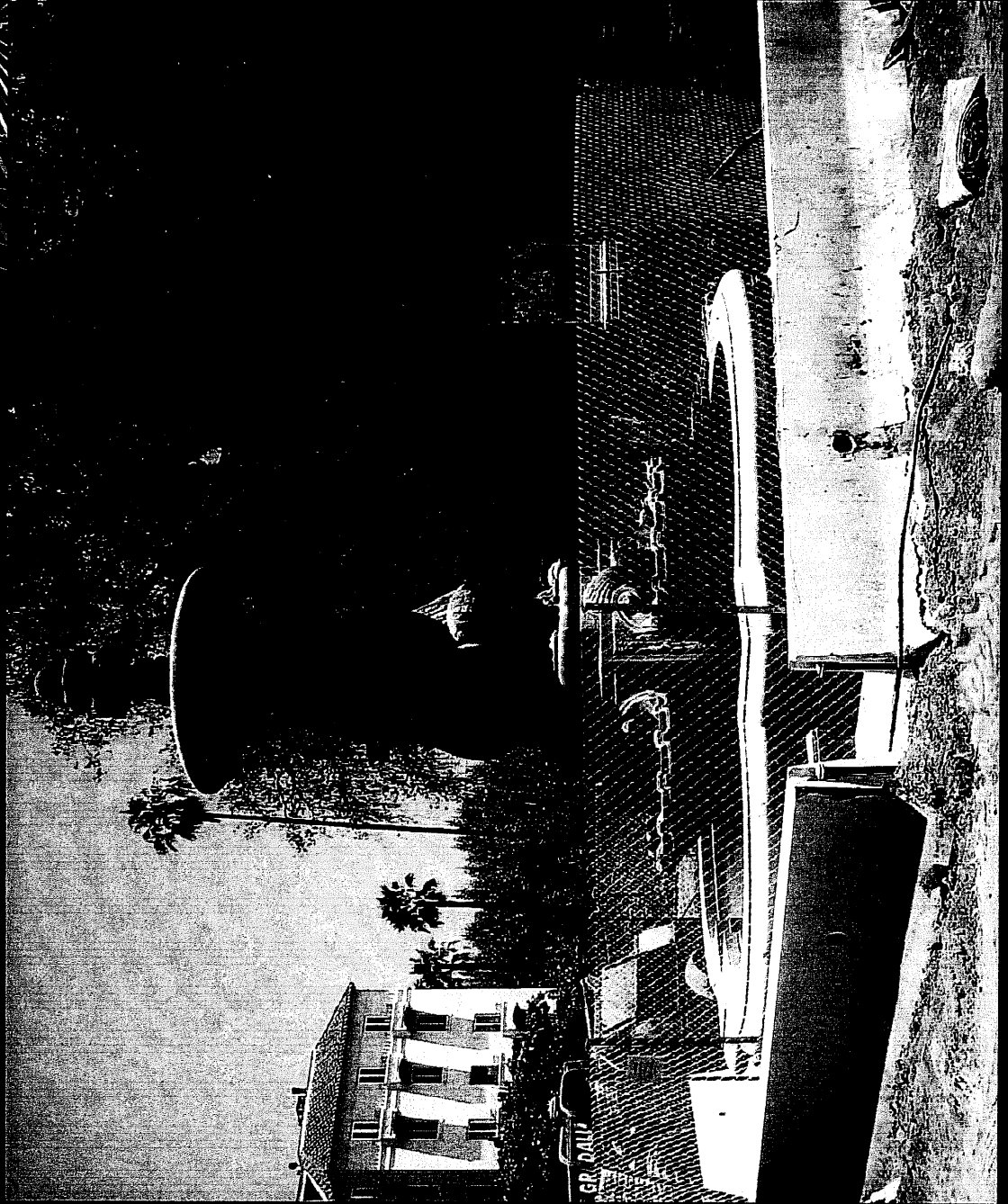


Tree Protection - Courtyard Oaks



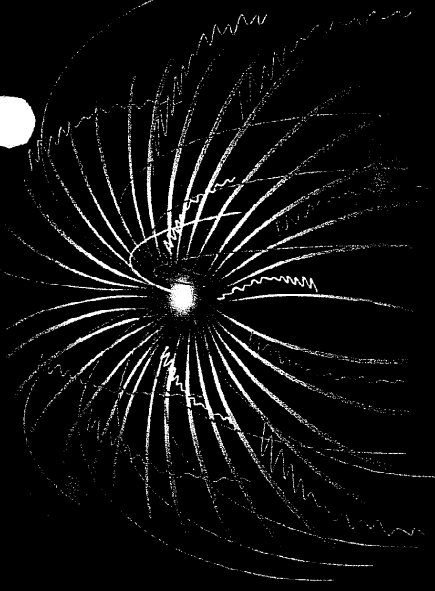


Courtyard Fountain Protection



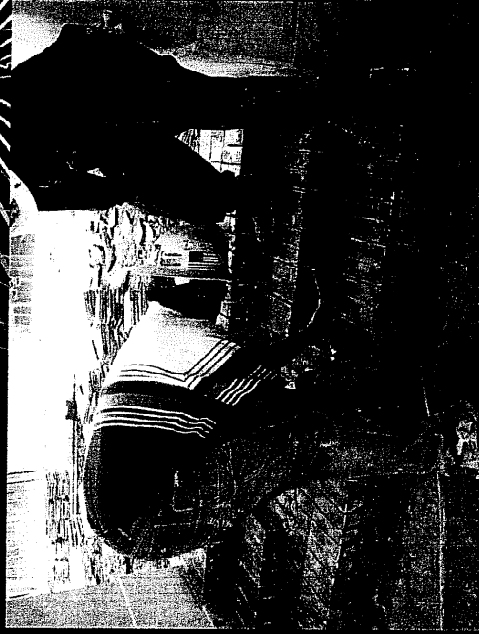
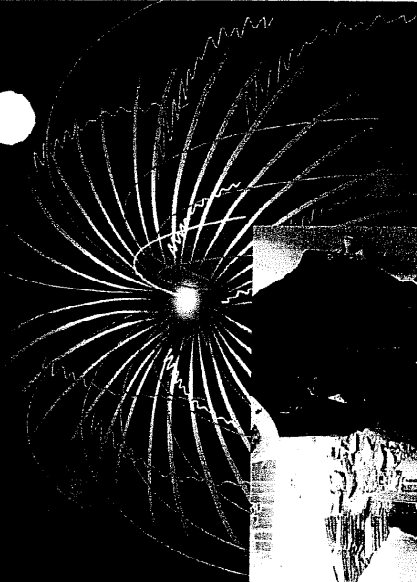


Exterior Building Protection

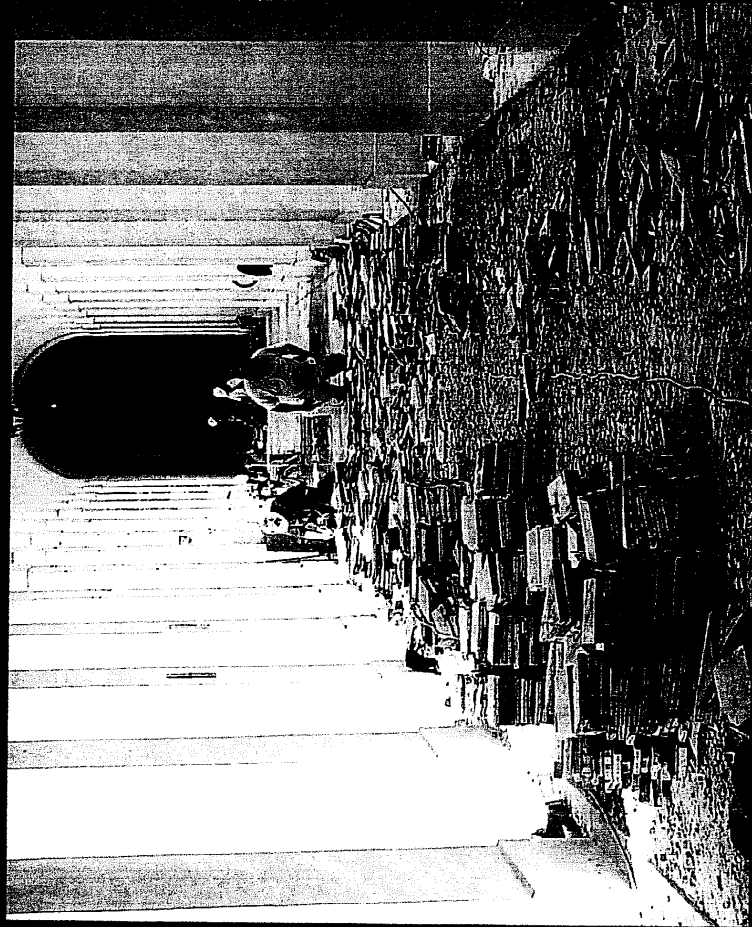




Arcade Brick and Tile Salvage



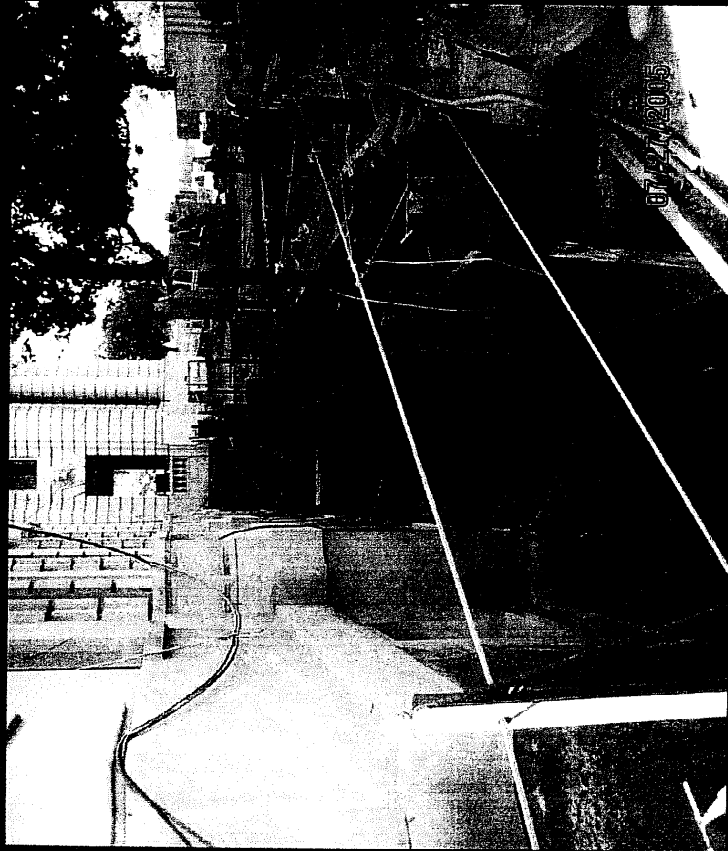
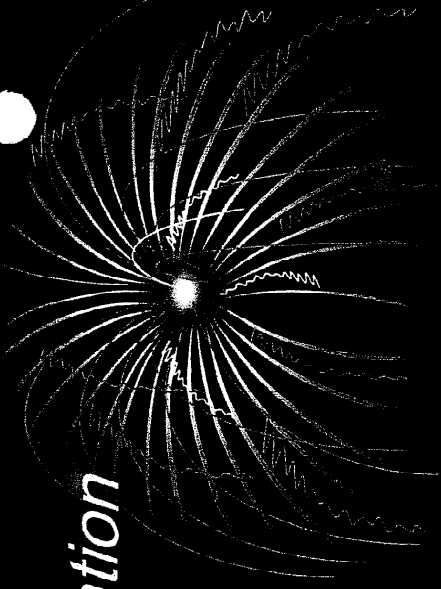
Arcade Brick Salvage



Arcade Tile Salvage

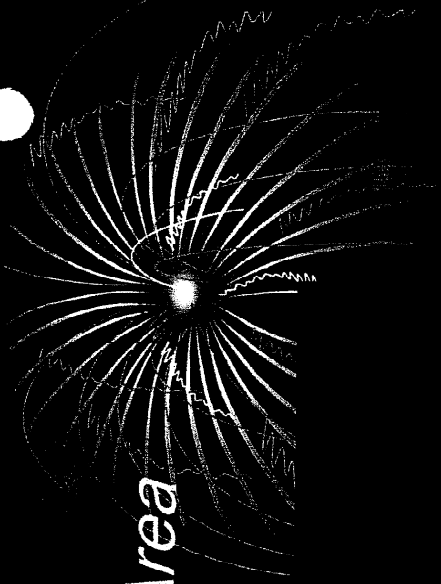


Exterior Excavation for Base Isolation Installation

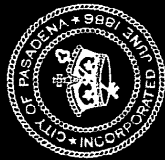




Interior Excavation - Basement Area



07/27/2005



Interior Demolition - City Hall Attic

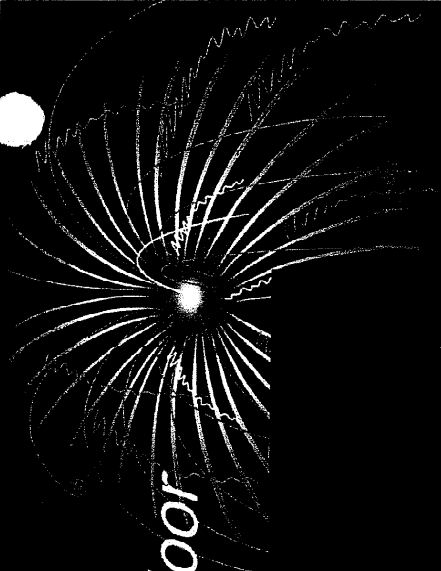


Before Demolition

After Demolition



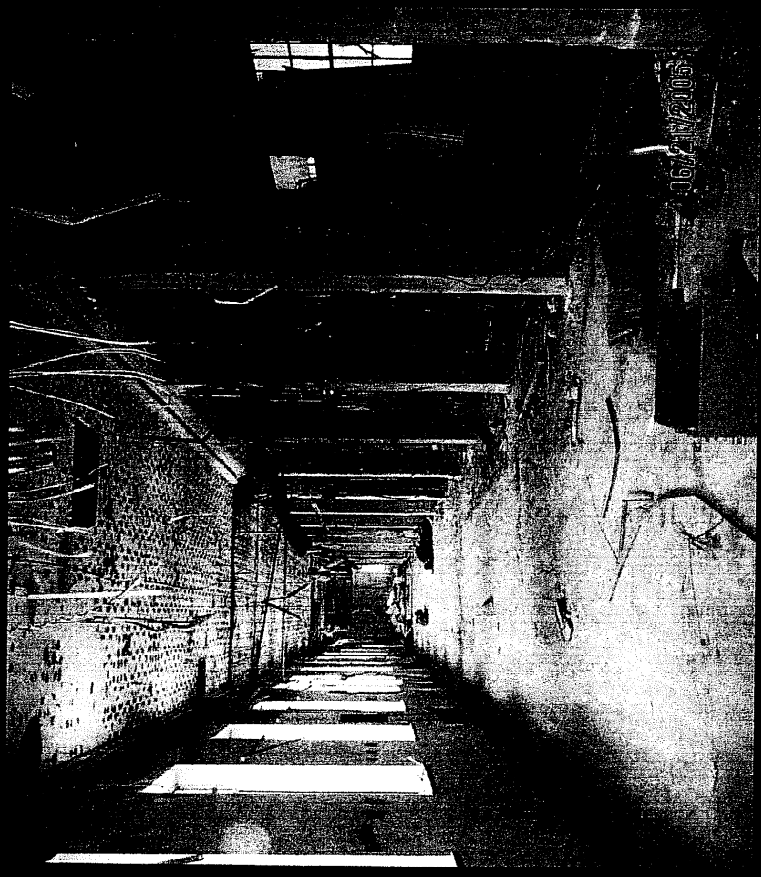
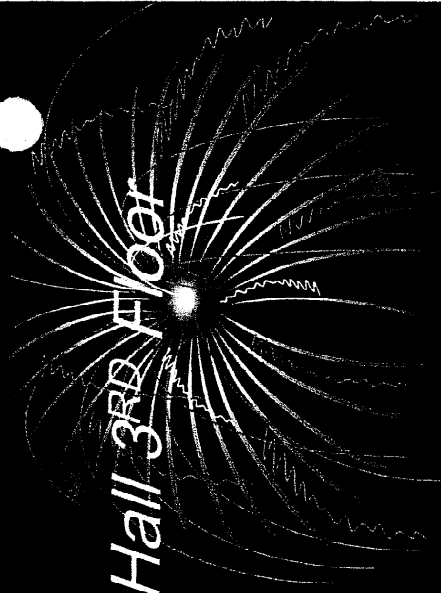
Interior Demolition - City Hall 4th Floor



07/27/2005



Interior Demolition/Framing - City Hall 3RD Floor





Interior Demolition - City Hall 2nd Floor





Interior Demolition - City Hall 1ST Floor

