

# Agenda Report

**TO:** CITY COUNCIL **DATE:** MARCH 8, 2004  
**FROM:** CYNTHIA KURTZ, CITY MANAGER  
**SUBJECT:** EXECUTIVE SUMMARIES FOR THE LOWER ARROYO MASTER PLAN  
AND THE HAHAMONGNA WATERSHED PARK MASTER PLAN

**RECOMMENDATION:**

This report is presented for information only.

**BACKGROUND:**

On September 29, 2003, the City Council adopted two of the Arroyo Seco Master Plans: the Lower Arroyo Master Plan and the Hahamongna Watershed Park Master Plan. At this meeting, both the Council and the community expressed the need for Executive Summaries for each of these master plan documents.

Copies of the Executive Summaries for each of these master plans are provided to you in the two attachments. These documents provide an overview of the Master Plan documents including information on the plans' Guiding Principles, History, Area Description, Goals, and List and Map of Improvements Projects approved in the document. The Executive Summaries are now available to the public on the City website and at all City public libraries. These executive summaries will also be provided at the publishing of the Final Lower Arroyo Master Plan and the Final Hahamongna Watershed Park Master Plan, anticipated for sometime in March 2004.

City Council  
March 8, 2004  
Executive Summaries for the Arroyo Seco Master Plans

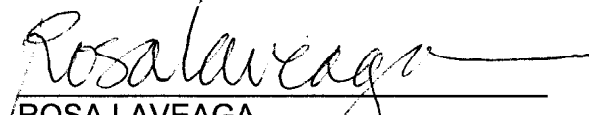
**FISCAL IMPACT:**

None


Respectfully submitted,

  
CYNTHIA J. KURTZ  
CITY MANAGER


Prepared by:

  
ROSA LAVEAGA  
Arroyo Seco Park Supervisor  
Parks and Natural Resources Division

Reviewed by:

  
KATHLEEN WOODS, Administrator  
Parks and Natural Resources Division

Approved by:

  
MARTIN PASTUCHA, Director  
Department of Public Works

**Attachments:**

- A. Executive Summary of the Lower Arroyo Master Plan
- B. Executive Summary of the Hahamongna Watershed Park Master Plan



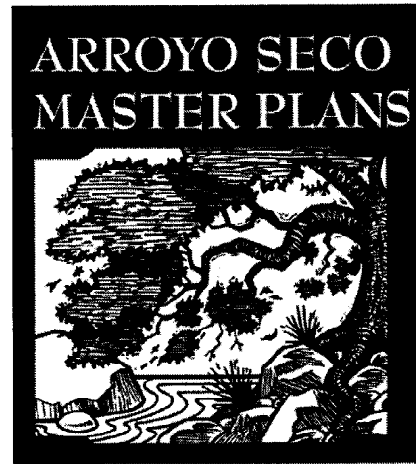
# Lower Arroyo Master Plan

## Executive Summary

City of Pasadena  
Adopted 9/29/03

**03/08/2004**  
**10.A.**

---



# Lower Arroyo Master Plan

## Executive Summary

City of Pasadena  
Adopted 9/29/03

## LOWER ARROYO MASTER PLAN EXECUTIVE SUMMARY

The *Arroyo Seco Master Plans* are comprised of a set of planning documents that portray a community vision for one of the region's most valued resources, the Arroyo Seco. The Lower Arroyo Master Plan (LAMP), one of the *Arroyo Seco Master Plans*, was adopted on September 29, 2003. Following is a summary of the larger, more detailed plan that is available for review.

The Arroyo Seco is a significant regional resource that overlaps multiple jurisdictions including the Angeles National Forest, the unincorporated community of Altadena, the City of La Cañada Flintridge, the City of Pasadena, the City of South Pasadena, and the City of Los Angeles (see Exhibit 1). The *Arroyo Seco Master Plans* focus on the Arroyo in Pasadena, and the LAMP directly addresses the southernmost reach of the Arroyo Seco in Pasadena (see Exhibit 2).

### BACKGROUND

The Arroyo Seco is on the western edge of the City of Pasadena and serves as a major tributary to the Los Angeles River. Arroyo Seco translates to "dry gulch." This deeply cut canyon links the San Gabriel Mountains to the Los Angeles River. The intermittent stream for which it is named begins high in the San Gabriels, meanders south through the canyon past various cities, joins the Los Angeles River, and continues on to the Pacific Ocean. As the Arroyo Seco stream flows through the City, it passes through three distinct geographical areas: Hahamongna Watershed Park, the Central Arroyo, and the Lower Arroyo. The Arroyo Seco has been used historically as a source of food and materials, an exploration route, a corridor for wildlife, a source of jobs during the Depression, and provider of drinking water.

The importance of the Arroyo Seco as a valued resource to the City of Pasadena prompted the need for the *Arroyo Seco Master Plans*. The Arroyo Seco is valued by many for its natural beauty and as a place to engage in a variety of both passive and active recreational activities. The development of the *Arroyo Seco Master Plans* aims to further enhance the beauty of the Arroyo Seco by restoring the natural areas and planning for and implementing each of the master plans.

The creation of the *Arroyo Seco Master Plans* is the result of a broad-based community effort that included a long list of stakeholders: Residents, community groups, park neighbors, other public agencies, advisory committees and City commissions. All have worked hard to develop the guiding principles, goals, objectives, and projects for the Arroyo Seco that have encouraged the consolidation of master planning efforts in the Arroyo Seco. Although the Arroyo Seco is comprised of three distinct geographical areas, it is one ecosystem that is interconnected by a number of resources and features including, but not limited to, water, habitat, geology, recreation and culture.

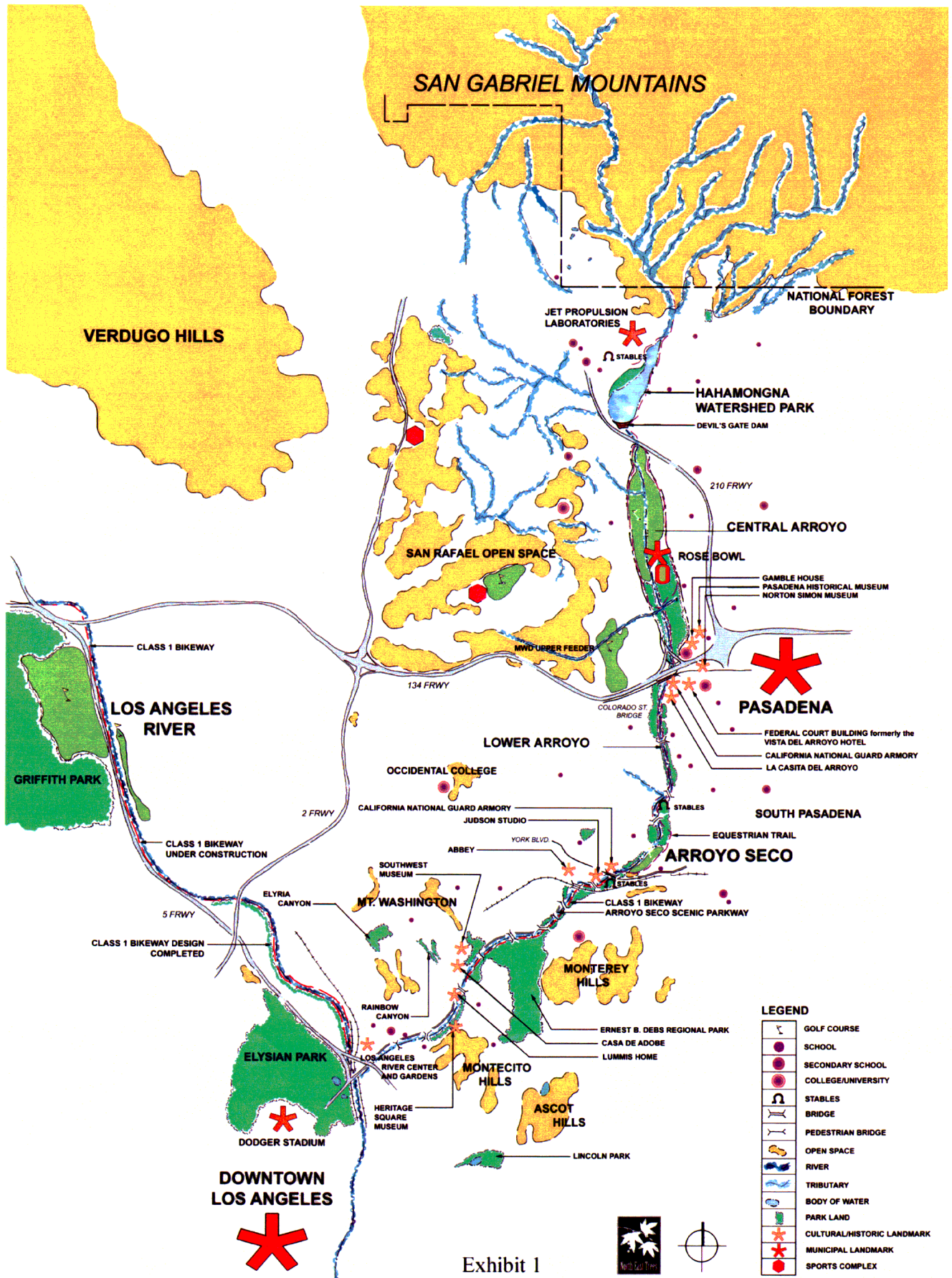


Exhibit 1



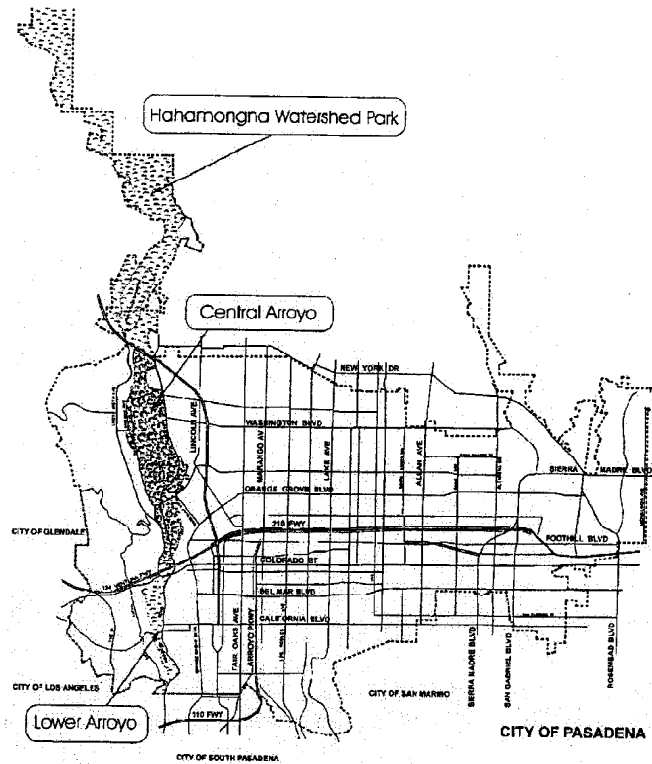


Exhibit 2

## Guiding Principles

The Guiding Principles for the Arroyo Seco were developed to serve as the umbrella under which fall the specific goals and objectives for each of the Arroyo Seco Master Plans. These six Recommended Guiding Principles were developed collaboratively between members of the community, members of the Recreation and Parks Commission members of the Hahamongna Watershed Park Advisory Committee, and City staff. These Recommended Guiding Principles will also serve as a bridge between the Arroyo Seco Master Plans and the City's General Plan Update. The six principles are:

- To encourage and promote the stewardship and enjoyment of the Arroyo Seco in Pasadena.
- To balance and integrate the interrelated issues of water resources, recreation, natural resource preservation and restoration, and flood management in the Arroyo Seco.
- To provide a safe, secure and accessible Arroyo Seco for public enjoyment.
- To recognize the importance to Pasadena of the history, cultural resources and unique character of the Arroyo Seco, and to conserve and enhance these assets.

- To preserve and acquire open space in or adjacent to the Arroyo Seco.
- To recognize that the Arroyo Seco in Pasadena is comprised of distinct geographical areas that are interconnected by a number of resources and features including, but not limited to, water, habitat, geology, recreation, and culture; and that it is part of a larger watershed.

The *Arroyo Seco Master Plans* were developed by the combined efforts of the Planning and Development Department and the Department of Public Works. The implementing department for the completed *Arroyo Seco Master Plans* will be the Department of Public Works. The projects identified in the *Arroyo Seco Master Plans* are described and listed to easily translate to the City's Capital Improvement Program.

### **Arroyo Seco Design Guidelines**

The Arroyo Seco Design Guidelines are another one of the *Arroyo Seco Master Plans* and were adopted on April 14, 2003. The purpose of the Arroyo Seco Guidelines is to 1) provide a unifying set of criteria for the site development improvements set forth in the Arroyo Seco Master Plans; 2) provide site development design criteria for ongoing, long-range improvements for the Arroyo Seco leading to a unified park design that reflects the heritage of the Arroyo Seco and its relationship to the tradition of the City of Pasadena; and 3) provide specific site design solutions that are consistent with the existing Arroyo Seco Ordinance and a vehicle by which practical inputs for ongoing improvements can take place.

The Arroyo Seco Design Guidelines provide guidance in the following areas:

- Habitat Restoration and Landscape Improvements
- Architecture
- Cultural Resources
- Recreation
- Signage
- Walls, Fences and Gates
- Walkways, Paths and Trails
- Parking and Traffic Control
- Public Art
- Site Furnishings

### **Arroyo Seco Location**

The Arroyo Seco is located in the west San Gabriel Valley. The approximately 1,000-acre area addressed by the *Arroyo Seco Master Plans* lies within the City of Pasadena. The *Arroyo Seco Master Plans* area is partially bounded on the north by the Jet Propulsion Laboratory (JPL) bridge;



on the northeast by the community of Altadena in the unincorporated area of the County of Los Angeles; on the south by the City of South Pasadena; and to the southwest by the Highland Park community of the City of Los Angeles. To the west, beyond the western boundary of the City of Pasadena, is the community of Eagle Rock in the City of Los Angeles. To the northwest, also at the western boundary of the City of Pasadena, are the two cities of Glendale and La Cañada Flintridge.

The *Arroyo Seco Master Plans* consist of three master plan areas known as Hahamongna Watershed Park (approximately 300 acres), the Central Arroyo Seco (approximately 550 acres), and the Lower Arroyo Seco (approximately 150 acres).

The Upper Arroyo Seco (approximately 1300 acres), which includes Hahamongna Watershed Park, is approximately a 4-mile stretch and is bounded on the north by the Angeles National Forest and to the east by the community of Altadena in the unincorporated area of the County of Los Angeles. It is bounded on the south by the Foothill Freeway and Devil's Gate Dam and to the west by the city of La Cañada Flintridge.

The Central Arroyo Seco, which includes the Rose Bowl facilities, is an approximate 2.5-mile stretch, and is bounded on the north by the Foothill Freeway, and to the east by the City of Pasadena. It is bounded to the south by the Colorado Street Bridge and to the west by the City of Pasadena. The Central Arroyo is near the City's western boundary, shared with the City of Los Angeles community of Eagle Rock and the City of Glendale.

The Lower Arroyo Seco, an approximate 1.75-mile stretch, is bounded on the north by the Colorado Street Bridge, to the east by the City of Pasadena, to the south by the City of South Pasadena, and to the west by the City of Pasadena. The Lower Arroyo is near the City of Pasadena's western boundary with the City of Los Angeles communities of Eagle Rock and Highland Park, and the City of South Pasadena.

### **Operation of the Arroyo Seco**

The City of Pasadena maintains the physical and natural resources of the Arroyo Seco in cooperation with several other agencies. The County of Los Angeles Department of Public Works owns and operates Devil's Gate Dam and maintains a flood control easement to the 1075-foot elevation, which carries water from Devil's Gate Dam, at the base of Hahamongna Watershed Park, through the Central and Lower Arroyo Seco to its confluence with the Los Angeles River. The County of Los Angeles Department of Public Works Flood Maintenance Division is responsible for maintaining everything within the 1,075 easement related to flood control and debris removal. The City of Pasadena is responsible for maintaining the habitat and recreation-related features within and outside that easement. While the majority of the Central and Lower Arroyo Seco is channelized for flood control, the City has purposefully maintained the natural order of the surrounding floodplain and is working collaboratively with other Arroyo Seco stakeholders to seek feasible alternatives to the channelized segments in the Arroyo Seco.

## **LOWER ARROYO SECO**

### **Lower Arroyo Seco Description**

The 150-acre Lower Arroyo Seco is designated as open space and a cultural landmark which contains a natural park, fly casting pond and clubhouse, an archery range and clubhouse, a system of rubble walls that retain the slopes as well as define paths, multi-use trails, the La Casita del Arroyo community center, the Aids Memorial Grove, and several promontory outlook points such as the Bird Sanctuary. The canyon walls support primarily native and naturalized plant species which serve as habitat for a variety of bird, insect, and small mammal species. The concrete flood control channel runs through the entire length of the Lower Arroyo Seco, dividing the canyon into east and west sides. Approximately 26 acres within a one-mile stretch of the Lower Arroyo Seco were recently restored with naturalized streambeds and native vegetation. The area is currently characterized by active and passive recreation uses.

### **Previous Planning Efforts**

In January 1988, when the City of Pasadena commissioned a design team from the Graduate Landscape Architecture Program at California State Polytechnic University at Pomona to develop a Master Plan for the area. That effort resulted in a document entitled "Master Plan for the Lower Arroyo Seco" presented to the City Council in 1988.

In 1997, the City reinitiated its update process for the Lower Arroyo Master Plan in concert with its master planning for the entire Arroyo Seco. This Lower Arroyo Master Plan is the product of the extensive update process and conformance to the mandated actions described above. It represents the culmination of years of community planning and dialogue on the concepts of the original Cal Poly study to subsequent updates and previous conceptual approval and direction by the Pasadena City Council to the final adopted version of the plan.

### **Goals of the Plan**

The following goals and objectives consider all of the historical planning efforts in Pasadena's Arroyo Seco and put forth the following adopted goal statements for the Lower Arroyo Seco in Pasadena:

#### *Goals of the Lower Arroyo Master Plan*

1. Restore, preserve, and enhance the natural character of the Arroyo as a self-sustaining, healthy system for people, plants, and animals interacting with the land.
2. Maximize the effective use of available water for the benefit of people, plants, and animals.
3. Provide appropriate recreation opportunities for the Pasadena community.
4. Provide adequate multi-modal circulation, access and parking.
5. Improve the aesthetics and preserve the historical elements of the Lower Arroyo.

6. Provide a safe and secure environment for recreation activities.
7. Manage and maintain the area to balance the natural habitat, recreational needs and public health and safety.
8. Enrich and promote the unique natural character of the Lower Arroyo Seco Park.

### **Major Projects of the Lower Arroyo Seco Master Plan**

The adopted Lower Arroyo Master Plan consists of a list of recommended improvements and enhancements that have remained consistent throughout the planning history of the Lower Arroyo Seco. The implementation projects around which the adopted Lower Arroyo Seco Master Plan is built are illustrated in Exhibit 3 and include the following:

#### **Improve the Grounds of La Casita Del Arroyo**

*Restore Arroyo Stone Walls and Stairs*  
*Maintain Trail Connections*  
*Provide Interpretative Information*  
*Assess and Implement Stabilization of Slope*

#### **Enhance Main Park Entrance**

*Provide New Gate*  
*Improve Entry Landscape*  
*Widen Access Road for Safety*

#### **Improve Existing South Entrance**

*Enhance Equestrian Amenities*  
*Provide Interpretive Area*  
*Restore Native Plant Communities*  
*Maintain Hiking and Equestrian Trail Connections*

#### **Improve Casting Pond Area**

*Repair Pond and Resurface Deck*  
*Repair Drainage System*  
*Develop ADA-accessible Trail*  
*Improve and Enhance Public Restroom*

#### **Enhance Bird Sanctuary**

*Restore Stonework and Fountain*  
*Develop Trail Connection to Memorial Grove*  
*Provide Lighting for Increased Security*  
*Provide Curb Cut to Encourage Use as Rest Area*  
*Provide Interpretative Signage*  
*Enhance Landscaping*  
*Repair Storm Drain*

#### **Enhance Northern Archery Range**

*Improve Paths and Trails*  
*Improved Signage for Safety*

**Enhance Southern Archery Range**

*Improve Paths, Trails and Amenities  
Rebuild Targets and Target Access  
Improved Signage for Safety*

**Roving Archer's Clubhouse Improvements**

*Rebuild Clubhouse with Storage Area  
Provide Interpretative Information and Map of Range Area  
Landscape with Native Plants*

**Improve Bridge Crossing at Archer's Clubhouse**

*Modify Gate and allow Passage for Nonmotorized Users*

**Improve Westside Multi-Use Trail Access at Parker-Mayberry Bridge**

*Install Bollards at Arroyo Boulevard Entry/Exit to Prevent Nonmotorized Use*

**Westside Multi-Use Trail For Hikers and Equestrians**

*Maintain Trail from Southern City Limits to Parker-Mayberry Trail Bridge*

**EastSide Multi-Use Trail for Hikers and Equestrians**

*Maintain Trail From South City Limits To Parker-Mayberry Bridge*

**Renovate Camel's Hump Loop Trail**

*Expand Trail System at Camel's Hump  
Study Geological Stability  
Clear Brush and Create Fuel Modification Zone  
Retrofit and Repair Irrigation System  
Habitat Restoration*

**Improve Westside Pedestrian Trail**

*Separate Southern Archery Range Trail from Westside Multi-Use Trail  
Improve Signage for Safety  
Restore Native Plant Community*

**Restore Arroyo Boulevard Rim Trail**

*Improve Trail for Pedestrians Only  
Restore Arroyo Stone Walls  
Restore Native Plant Communities  
Repair Irrigation*

**Restore Neighborhood Trail Access**

*Restore Historic Trails at:  
Westminster  
La Casita Trail (through butterfly garden)  
Bird Sanctuary  
California Boulevard  
La Loma  
Bradford Street*

*Busch Garden Court*

*Rockwood Place Parker-Mayberry Bridge to Westside Trail*

*Westbridge Place*

*South of Westbridge Place*

*San Pasqual (north of San Rafael Avenue)*

*Restore Arroyo Stone Walls*

*Restore Plantings*

*Improve Trailheads*

**Restore Memorial Grove**

*Maintain Open Natural Area*

*Habitat Restoration*

**Improve Regional Trail Connection**

*Stabilize Slope of Trail Under Bridges*

**Restore the Banks of the Lower Arroyo**

*Provide for Wildlife Corridor*

*Promote Measures to Stabilize Banks and Control Erosion*

*Protect and Restore Native Plant Communities*

**Restoration of Annandale Creek/Laguna Canyon**

*Work Cooperatively with Neighboring Jurisdictions to Restore Creek*

*Restore Habitat*

*Improve Water Quality Entering Arroyo Seco Stream/Channel*

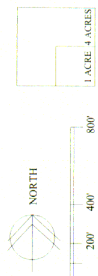


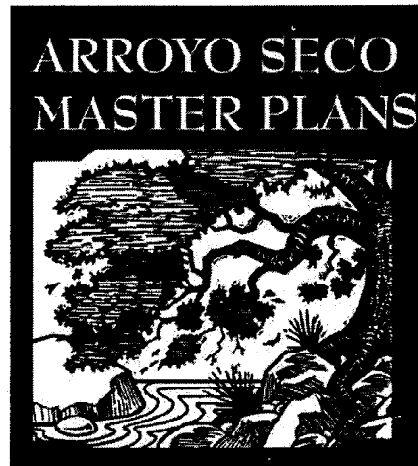
Exhibit 3



# LOWER ARROYO MASTER PLAN

Adopted 9/29/03

One of the Arroyo Seco Master Plans



# Hahamongna Watershed Park Master Plan

## Executive Summary

**City of Pasadena**  
Adopted 9/29/03

**03/08/2004**  
**10.A.**

---



# Hahamongna Watershed Park Master Plan

## Executive Summary

City of Pasadena  
Adopted 9/29/03



## HAHAMONGNA WATERSHED PARK MASTER PLAN EXECUTIVE SUMMARY

The *Arroyo Seco Master Plans* are comprised of a set of planning documents that portray a community vision for one of the region's most valued resources, the Arroyo Seco. The Hahamongna Watershed Park Master Plan (HWPMP), one of the *Arroyo Seco Master Plans*, was adopted on September 29, 2003. Following is a summary of the larger, more detailed plan that is available for review.

The Arroyo Seco is a significant regional resource that overlaps multiple jurisdictions including the Angeles National Forest, the unincorporated community of Altadena, the City of La Cañada Flintridge, the City of Pasadena, the City of South Pasadena, and the City of Los Angeles (see Exhibit 1). The *Arroyo Seco Master Plans* focus on the Arroyo in Pasadena, and the HWPMP directly addresses the lower 300 acres of the upper Arroyo Seco in Pasadena (see Exhibit 2).

### BACKGROUND

The Arroyo Seco is on the western edge of the City of Pasadena and serves as a major tributary to the Los Angeles River. Arroyo Seco translates to "dry gulch." This deeply cut canyon links the San Gabriel Mountains to the Los Angeles River. The intermittent stream for which it is named begins high in the San Gabriels, meanders south through the canyon past various cities, joins the Los Angeles River, and continues on to the Pacific Ocean. As the Arroyo Seco stream flows through the City, it passes through three distinct geographical areas: Hahamongna Watershed Park, the Central Arroyo, and the Lower Arroyo. The Arroyo Seco has been used historically as a source of food and materials, an exploration route, a corridor for wildlife, a source of jobs during the Depression, and provider of drinking water.

The importance of the Arroyo Seco as a valued resource to the City of Pasadena prompted the need for the *Arroyo Seco Master Plans*. The Arroyo Seco is valued by many for its natural beauty and as a place to engage in a variety of both passive and active recreational activities. The development of the *Arroyo Seco Master Plans* aims to further enhance the beauty of the Arroyo Seco by restoring the natural areas and planning for and implementing each of the master plans.

The creation of the *Arroyo Seco Master Plans* is the result of a broad-based community effort that included a long list of stakeholders: Residents, community groups, park neighbors, other public agencies, advisory committees and City commissions. All have worked hard to develop the guiding principles, goals, objectives, and projects for the Arroyo Seco that have encouraged the consolidation of master planning efforts in the Arroyo Seco. Although the Arroyo Seco is comprised of three distinct geographical areas, it is one ecosystem that is interconnected by a number of resources and features including, but not limited to, water, habitat, geology, recreation and culture.

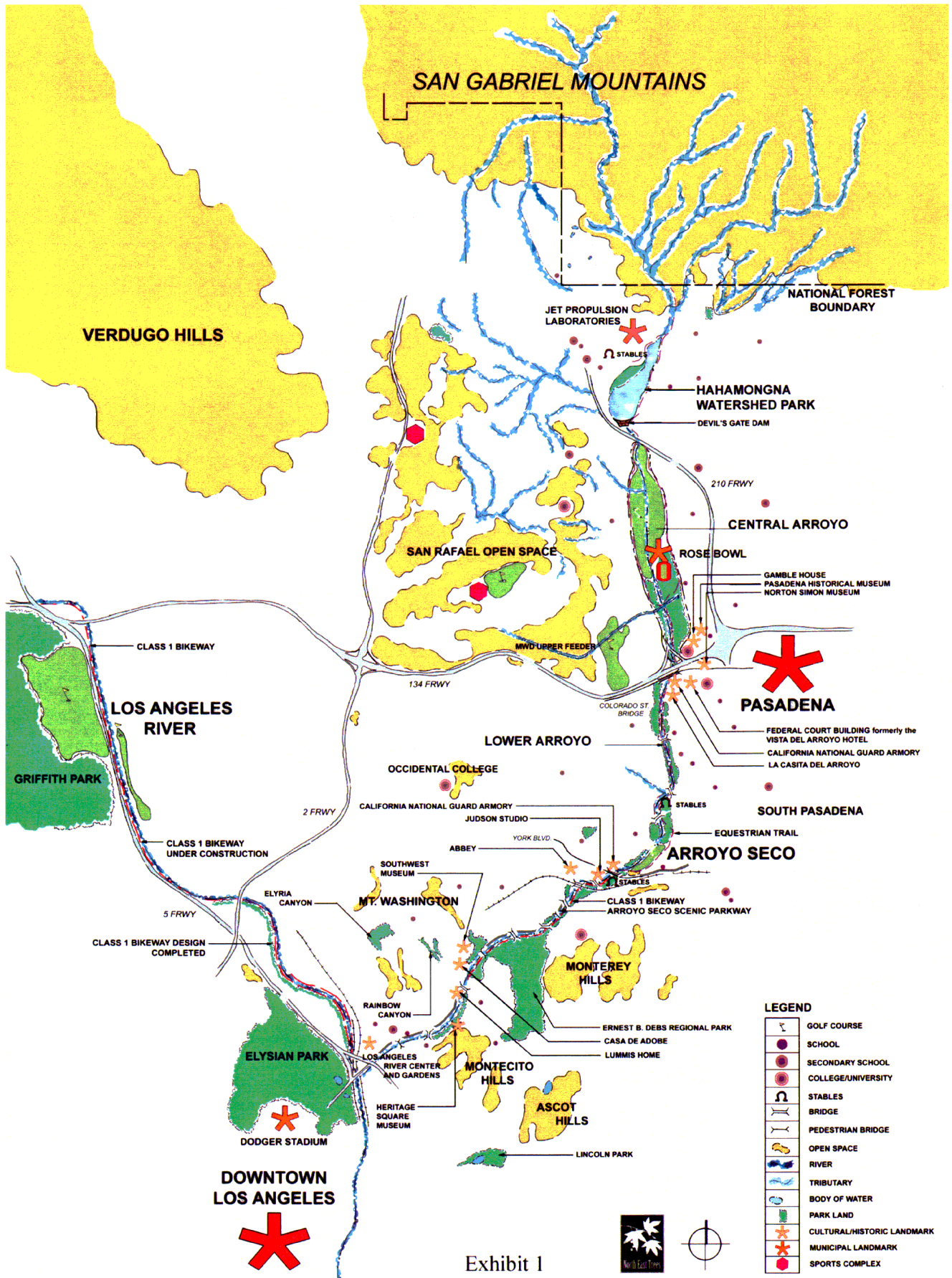
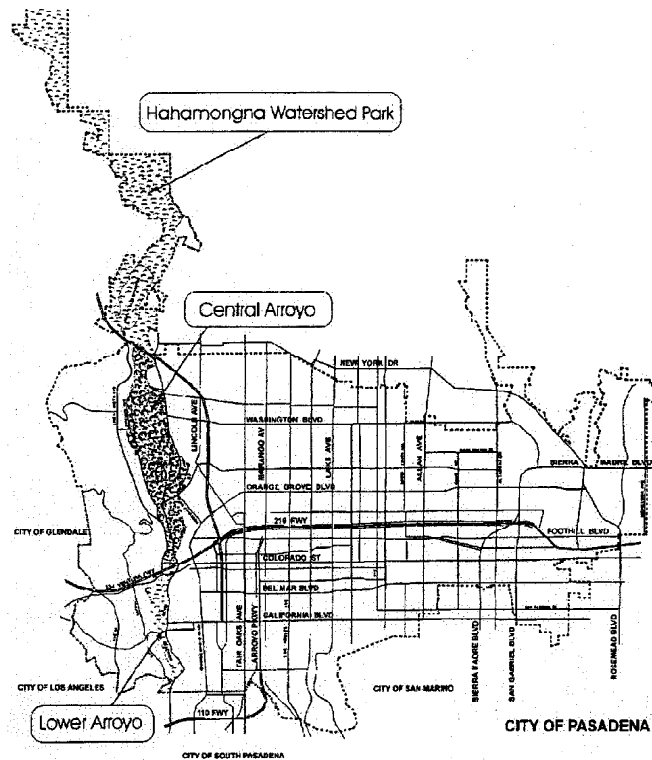


Exhibit 1





**Exhibit 2**

## **Guiding Principles**

The Guiding Principles for the Arroyo Seco were developed to serve as the umbrella under which fall the specific goals and objectives for each of the Arroyo Seco Master Plans. These six Recommended Guiding Principles were developed collaboratively between members of the community, members of the Recreation and Parks Commission members of the Hahamongna Watershed Park Advisory Committee, and City staff. These Recommended Guiding Principles will also serve as a bridge between the Arroyo Seco Master Plans and the City's General Plan Update. The six principles are:

- To encourage and promote the stewardship and enjoyment of the Arroyo Seco in Pasadena.
- To balance and integrate the interrelated issues of water resources, recreation, natural resource preservation and restoration, and flood management in the Arroyo Seco.
- To provide a safe, secure and accessible Arroyo Seco for public enjoyment.

- To recognize the importance to Pasadena of the history, cultural resources and unique character of the Arroyo Seco, and to conserve and enhance these assets.
- To preserve and acquire open space in or adjacent to the Arroyo Seco.
- To recognize that the Arroyo Seco in Pasadena is comprised of distinct geographical areas that are interconnected by a number of resources and features including, but not limited to, water, habitat, geology, recreation, and culture; and that it is part of a larger watershed.

The *Arroyo Seco Master Plans* were developed by the combined efforts of the Planning and Development Department and the Department of Public Works. The implementing department for the completed *Arroyo Seco Master Plans* will be the Department of Public Works. The projects identified in the *Arroyo Seco Master Plans* are described and listed to easily translate to the City's Capital Improvement Program.

### **Arroyo Seco Design Guidelines**

The Arroyo Seco Design Guidelines is another one of the *Arroyo Seco Master Plans* that were adopted on April 14, 2003. The purpose of the Arroyo Seco Guidelines is to 1) provide a unifying set of criteria for the site development improvements set forth in the Arroyo Seco Master Plans; 2) provide site development design criteria for ongoing, long-range improvements for the Arroyo Seco leading to a unified park design that reflects the heritage of the Arroyo Seco and its relationship to the tradition of the City of Pasadena; and 3) provide specific site design solutions that are consistent with the existing Arroyo Seco Ordinance and a vehicle by which practical inputs for ongoing improvements can take place.

The Arroyo Seco Design Guidelines provide guidance in the following areas:

- Habitat Restoration and Landscape Improvements
- Architecture
- Cultural Resources
- Recreation
- Signage
- Walls, Fences and Gates
- Walkways, Paths and Trails
- Parking and Traffic Control
- Public Art
- Site Furnishings

### **Arroyo Seco Location**

The Arroyo Seco is located in the west San Gabriel Valley. The approximately 1,000-acre area addressed by the *Arroyo Seco Master Plans* lies within the City of Pasadena. The *Arroyo Seco*

*Master Plans* area is partially bounded on the north by the Jet Propulsion Laboratory (JPL) bridge; on the northeast by the community of Altadena in the unincorporated area of the County of Los Angeles; on the south by the City of South Pasadena; and to the southwest by the Highland Park community of the City of Los Angeles. To the west, beyond the western boundary of the City of Pasadena, is the community of Eagle Rock in the City of Los Angeles. To the northwest, also at the western boundary of the City of Pasadena, are the two cities of Glendale and La Cañada Flintridge.

The *Arroyo Seco Master Plans* consist of three master plan areas known as Hahamongna Watershed Park (approximately 300 acres), the Central Arroyo Seco (approximately 550 acres), and the Lower Arroyo Seco (approximately 150 acres).

The Upper Arroyo Seco (approximately 1300 acres), which includes Hahamongna Watershed Park, is approximately a 4-mile stretch and is bounded on the north by the Angeles National Forest and to the east by the community of Altadena in the unincorporated area of the County of Los Angeles. It is bounded on the south by the Foothill Freeway and Devil's Gate Dam and to the west by the city of La Cañada Flintridge.

The Central Arroyo Seco, which includes the Rose Bowl facilities, is an approximate 2.5-mile stretch, and is bounded on the north by the Foothill Freeway and to the east by the City of Pasadena. It is bounded to the south by the Colorado Street Bridge and to the west by the City of Pasadena. The Central Arroyo is near the City's western boundary, shared with the City of Los Angeles community of Eagle Rock and the City of Glendale.

The Lower Arroyo Seco, an approximate 1.75-mile stretch, is bounded on the north by the Colorado Street Bridge, to the east by the City of Pasadena, to the south by the City of South Pasadena, and to the west by the City of Pasadena. The Lower Arroyo is near the City of Pasadena's western boundary with the City of Los Angeles communities of Eagle Rock and Highland Park, and the City of South Pasadena.

### **Operation of the Arroyo Seco**

The City of Pasadena maintains the physical and natural resources of the Arroyo Seco in cooperation with several other agencies. The County of Los Angeles Department of Public Works owns and operates Devil's Gate Dam and maintains a flood control easement to the 1075-foot elevation, which carries water from Devil's Gate Dam, at the base of Hahamongna Watershed Park, through the Central and Lower Arroyo Seco to its confluence with the Los Angeles River. The County of Los Angeles Department of Public Works Flood Maintenance Division is responsible for maintaining everything within the 1,075 easement related to flood control and debris removal. The City of Pasadena is responsible for maintaining the habitat and recreation-related features within and outside that easement. While the majority of the Central and Lower Arroyo Seco is channelized for flood control, the City has purposefully maintained the natural order of the surrounding floodplain and is working collaboratively with other Arroyo Seco stakeholders to seek feasible alternatives to the channelized segments in the Arroyo Seco.

## **HAHAMONGNA WATERSHED PARK MASTER PLAN**

### **Area Description**

The Upper Arroyo Seco provides a transition from the urban land uses associated with the community of Altadena and the cities of Pasadena and La Cañada Flintridge to the multiple-use, open-space areas of the Angeles National Forest. The Hahamongna Watershed Park Master Plan addresses the southernmost 300 acres of land that lie within the Upper Arroyo Seco.

The lower eastern portion of the Hahamongna Watershed Park Master Plan area is currently a sediment and debris basin due to the topography of the area and its proximity to the highly erosive San Gabriel Mountain range. The eastside also contains Johnson Field, an inactive spreading basin, which is used for informal recreational activities, a series of active spreading basins, and the JPL parking lot. The western portion of the Hahamongna Watershed Park Master Plan area contains the Oak Grove area (formerly Oak Grove Park). The Oak Grove area is divided into two areas, the Upper Oak Grove and the Lower Oak Grove. The Upper Oak Grove facilities include picnic facilities, restrooms, a maintenance building, and the equestrian staging area. The Lower Oak Grove facilities include a group picnicking area, a multi-purpose play field, rest rooms and a disc golf course. Other major landowners adjacent to Hahamongna Watershed Park include the Metropolitan Water District (MWD) and Jet Propulsion Laboratory (JPL). This area is currently dominated by passive recreation uses, water conservation, and flood control activities.

### **Previous Planning Efforts**

The adopted Hahamongna Watershed Park Master Plan is the result of a five-year long planning effort undertaken by the City of Pasadena. In January 1997, the Pasadena City Council established the Hahamongna Watershed Park Advisory Committee (HWPAC) which was given the charge of overseeing the Master Plan process. Since a number of years had passed since the approval of the Preliminary Park Plan by the City Council in December 1992, and renovation of the Devil's Gate Dam in 1996, the HWPAC held two community meetings to solicit input on the project. Based on this public input, a list of Park Elements was drafted and adopted by the HWPAC in 1997 as a bridge between the Preliminary Park Plan and the start of the Final Park Master Plan Process. The final Master Plan reflects these park elements as they have evolved. On February 7, 2000, the City Council approved, in concept, the Draft Hahamongna Watershed Park Master Plan as the proposed project to be addressed in the environmental document.

### **Goals of the Plan**

The goals for the Hahamongna Watershed Park Master Plan were derived from the list of Park Elements developed in 1997. Strong community input helped shape the goals identified below:

1. Preserve, restore, and enhance the native habitats;
2. The Devil's Gate flood control basin will be managed to provide protection to the developed and natural downstream areas;
3. Conserve and protect the water resources of the Arroyo Seco;
4. Provide diverse recreation opportunities for the Pasadena community;
5. Enrich and promote the unique history and culture of Hahamongna Watershed Park;
6. Provide a safe and secure park;
7. Provide adequate multi-modal circulation, access and parking.

### **Major Projects of the Hahamongna Watershed Park Master Plan**

More than 75 projects have been identified for implementation in the Hahamongna Watershed Park. The projects were identified through the efforts of the community, the Hahamongna Watershed Park Advisory Committee, and the master plan consultant team, and they are reflective of the goals established for the Hahamongna Watershed Park. A complete description of the projects can be found in the master plan document. Next steps include the completion of funded projects as well as securing funding for the additional implementation of unfunded projects and programs. The implementation projects around which the adopted Hahamongna Watershed Park Master Plan is built are illustrated in Exhibit 3 and a summary list of the projects by area are identified as follows:

#### **Devil's Gate Dam Area Improvements**

*Construct New Parking Area*

*Provide New East Access (entry) to Dam*

*Provide New West Access (exit) from Dam*

*Close La Cañada-Verdugo Road*

*Reconstruct Dam Keeper's Quarters and New Public Restroom*

*Provide Safety Enhancements at Dam and Observation Deck*

#### **Improve Westside Park Access**

*Enhance Park Entrance at Foothill Boulevard*

*Complete Oak Grove Drive Slip-Lane Improvements*

#### **Improve Eastside Park Access**

*Construct New Park Entrance*

#### **Water Conservation Projects**

*Create Seasonal Flood Management Water Conservation Pool*

*Construct Pump-Back System*

*Complete Overall Storm Drain Modifications*

*Improve Westside Spreading Basins*

*Improve Eastside Spreading Basins*

*Altadena Drain Improvements*

*Altacrest Drain Improvements*

#### **Flood Management Projects**

*Coordinate Sediment and Debris Management*

*Construct Sediment Removal Access*

**Oak Grove Area Improvements**

*Construct Group Picnic Shade Structures*  
*Renovate Westside Picnic Amenities*  
*Construct Oak Grove Field Restroom*  
*Construct Foothill Drain Improvements*  
*Renovate Outdoor Amphitheater*  
*Restore Oak Grove Field and Construct 2 Multi-purpose Fields*  
*Upgrade Oak Grove Maintenance Office Sewer*  
*Improve Disc Golf Course*  
*Improve Parking Area*  
*Provide Native Plant Nursery*

**Develop Supervised Overnight Camping Area**

*Park Ranger Station Improvements*  
*Upgrade Existing Restrooms*  
*Improve Existing Parking Areas*

**Equestrian Staging Area Improvements**

*Upgrade Existing Restroom*  
*Realign and Widen Access Road*  
*Berkshire Drain Improvements*

**Create Sunrise Overlook**

**Create Sunset Overlook**

**Construct Gabrielino Trail Area Improvements**

*Convert JPL Parking to Public Parking*  
*Construct New Public Restroom*

**Trail Development**

*Construct Perimeter Trail*  
*Restore Flint Wash Bridge Crossing*  
*Improve East Rim Trail*  
*Improve Trail Connections from East Rim Trail to Basin Perimeter Trail*  
*Improve West Rim Trail*  
*Improve Trail Connections from West Rim Trail to Basin Perimeter Trail*  
*Construct Dam Observation Trail*

**Establish Bicycle Route Around Park Perimeter**

**Habitat Restoration Projects**

*Restore and Establish Habitat at Realigned Stream Corridor*  
*Restore Riversidean Alluvial Fan Sage Scrub*  
*Establish Habitat at Spreading Basins*  
*Widen Stream Channel and Establish Riparian Habitat*  
*Establish East Entrance Habitat*



*Restore Habitat along Westside Perimeter Trail*  
*Establish Habitat at Multipurpose Fields and Relocated Disc Golf*  
*Establish Oak Woodland at Sunrise Overlook*  
*Restore Oak Woodland on Westside (partially)*  
*Establish Sycamore Woodland on Eastside (partially)*  
*Establish Riparian Habitat at Perimeter of the Flood Management/Water Conservation Pool*

**Utility Improvements**

*Underground Pasadena's Eastside Overhead Power and Communication Lines*  
*Relocate the Existing Southern California Edison Power Line in the Hahamongna Basin*  
*Relocate the Existing Pasadena Power and Communication Line*  
*Relocate the SCE North/South Transmission and South Distribution Line*

**Install Security, Safety & Accessibility Features**



CITY OF PASADENA

# HAHAMONGNA WATERSHED PARK MASTER PLAN

One of the Arroyo Seco Master Plans

Adopted 9/29/03

### HABITAT ESTABLISHMENT & RESTORATION

- COAST LIVE OAK WOODLAND
- SOUTHERN WILLOW SCRUB
- SAGE SCRUB
- RIVERSIDIAN ALLUVIAL FAN SAGE SCRUB
- MULE FAT SCRUB
- SOUTHERN SYCAMORE RIPARIAN WOODLAND
- STREAMBED RIPARIAN
- AQUATIC
- WETLAND

### WATER CONSERVATION

- WESTSIDE SPREADING BASINS\*

### SUPERVISED OVERNIGHT CAMPING AREA

- PARK RANGER STATION IMPROVEMENTS
- RESTROOM IMPROVEMENTS
- IMPROVED PARKING AREAS

### WEST SIDE PARK ACCESS

- PARK ENTRANCE AT FOOTHILL BLVD.
- OAK GROVE DRIVE IMPROVEMENTS

### OAK GROVE AREA

- GROUP PICNIC SHADE SHELTERS
- WEST SIDE PICNIC AMENITIES
- OAK GROVE FIELD RESTROOM
- FOOTHILL DRAIN IMPROVEMENTS
- OUTDOOR AMPHITHEATER
- MULTI-USE FIELDS - 3
- DISC GOLF IMPROVEMENTS
- EXPANDED PARKING AREA
- NATIVE PLANT NURSERY

### LA CANADA H.S.

### EQUESTRIAN STAGING AREA

- UPGRADE RESTROOM
- REALIGN AND WIDEN ACCESS ROAD
- BERKESHIRE DRAIN IMPROVEMENTS

### PERIMETER TRAIL

### SUNRISE OVERLOOK

### BICYCLE ROUTE

### FLINT WASH BRIDGE

### DEVIL'S GATE DAM AREA

- NEW PARKING AREA AT OBSERVATION DECK
- EAST ACCESS (ENTRY) TO DAM
- WEST ACCESS (EXIT) FROM DAM
- CLOSE LA CANADA-VERDUGO ROAD
- DAM KEEPER'S QUARTERS & PUBLIC RESTROOM
- FENCING AT DAM & OBSERVATION DECK FOR PUBLIC SAFETY

YAKATA ASSOCIATES  
 PHILIP WILLIAMS & ASSOCIATES  
 HINTZ & BALVIN  
 THE NATELSON COMPANY  
 MIRALLES ASSOCIATES  
 MONTGOMERY WATSON  
 BETH THELEN, ARTIST  
 PARSONS ENGINEERING SCIENCES  
 HUNT DESIGN ASSOCIATES



- GABRIELINO TRAIL AREA
- CONVERT JPL PARKING TO PUBLIC PARKING\*
- NEW PUBLIC RESTROOM\*

### NORTH PERIMETER TRAIL BRIDGE CROSSING

### WATER CONSERVATION

- EAST SIDE SPREADING BASINS\*
- ALTADENA DRAIN IMPROVEMENTS
- ALTACREST DRAIN IMPROVEMENTS\*

### SUNSET OVERLOOK

### EAST SIDE PARK ACCESS

- NEW PARK ENTRANCE

### WATER CONSERVATION

- SEASONAL FLOOD MANAGEMENT
- WATER CONSERVATION POOL
- PUMP BACK SYSTEM\*
- OVERALL STORM DRAIN IMPROVEMENTS

### FLOOD MANAGEMENT

- SEDIMENT & DEBRIS MANAGEMENT
- SEDIMENT REMOVAL ACCESS

### TRAIL DEVELOPMENT

- PERIMETER TRAIL
- FLINT WASH BRIDGE CROSSING
- NORTH BRIDGE CROSSING
- EAST RIM TRAIL & CONNECTORS
- WEST RIM TRAIL & CONNECTORS
- DAM OBSERVATION TRAIL

\* This project could impact NASA/JPL perchlorate clean-up and cannot proceed without NASA/JPL coordination.

Exhibit 3