

TRACT REGISTER			
TRACT NO.	LAND OWNER	ACREAGE	TRANSFER FEE
A	DEPARTMENT OF THE ARMY	5.17	

REMARKS  
 Reassigned from Pasadena Area Support Center by General Order No. 521 dated 7/1/65, 6/11/65-6/30/65

# PROJECT MAP

DEPT. OF THE ARMY  
 USING SERVICE U.S.A.R.

## LOCATION OF PROJECT

STATE CALIFORNIA  
 COUNTY LOS ANGELES  
 DIVISION SOUTH PACIFIC  
 DISTRICT LOS ANGELES  
 ARMY AREA SIXTH  
 MILES - OF PASADENA  
 OF

## TRANSPORTATION FACILITIES

RAILROADS 11, 118, 134  
 STATE ROADS 60, 65, 101  
 FEDERAL ROADS  
 AIR LINES

## ACQUISITION

TOTAL ACRES ACQUIRED 5.17  
 FEE 5.17  
 PUBLIC DOMAIN PERM. WITHDRAWAL  
 USE PERMIT  
 TRANSFER  
 LEASE  
 LESSER INTERESTS

## DISPOSAL

TOTAL ACRES DISPOSED OF  
 SOLD  
 PUBLIC DOMAIN PERM. WITHDRAWAL  
 USE PERMIT TEMP. WITHDRAWAL  
 TRANSFERRED  
 LEASES TERMINATED  
 LESSER INTERESTS TERM.  
 REASSIGNED  
 OTHER

## LEGEND

EXCEPT FOR THE SPECIAL SYMBOLS SHOWN BELOW MAP SYMBOLS ARE STANDARD IN ARMY MAP SERVICE TECHNICAL MANUAL NO. 33.

- RESERVATION LINE
- RESERVATION LINE (Actual Survey)
- TRACT BOUNDARY LINE
- TRACT NUMBER
- CONTOUR LINE
- DISPOSAL

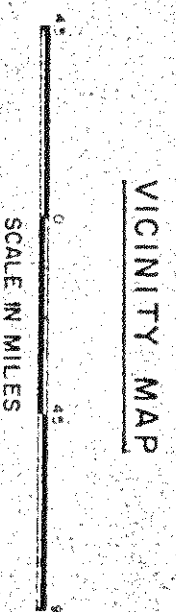
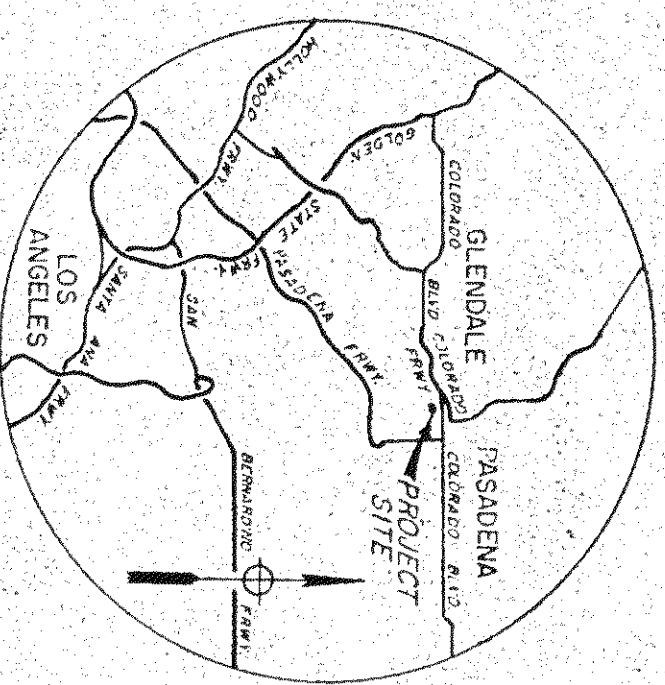
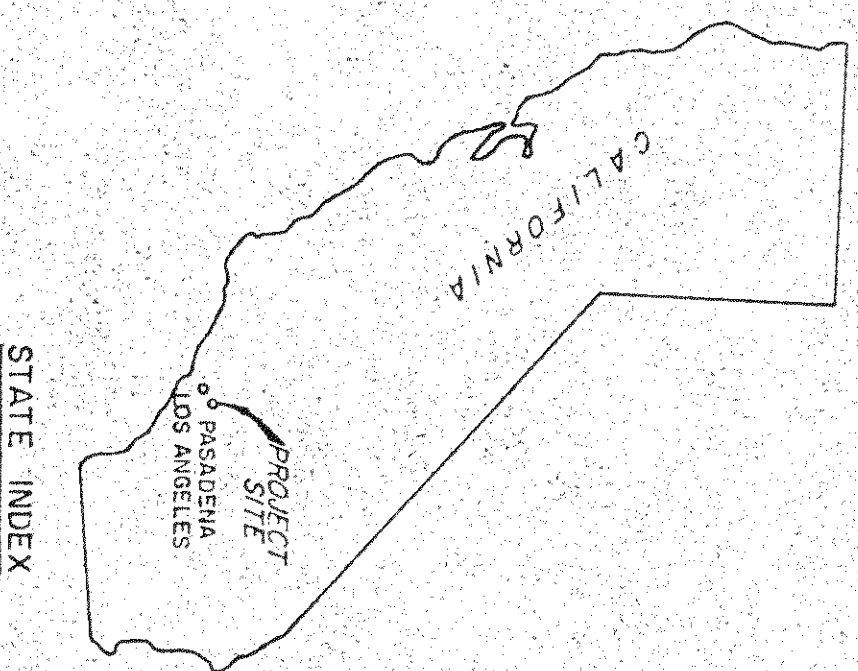
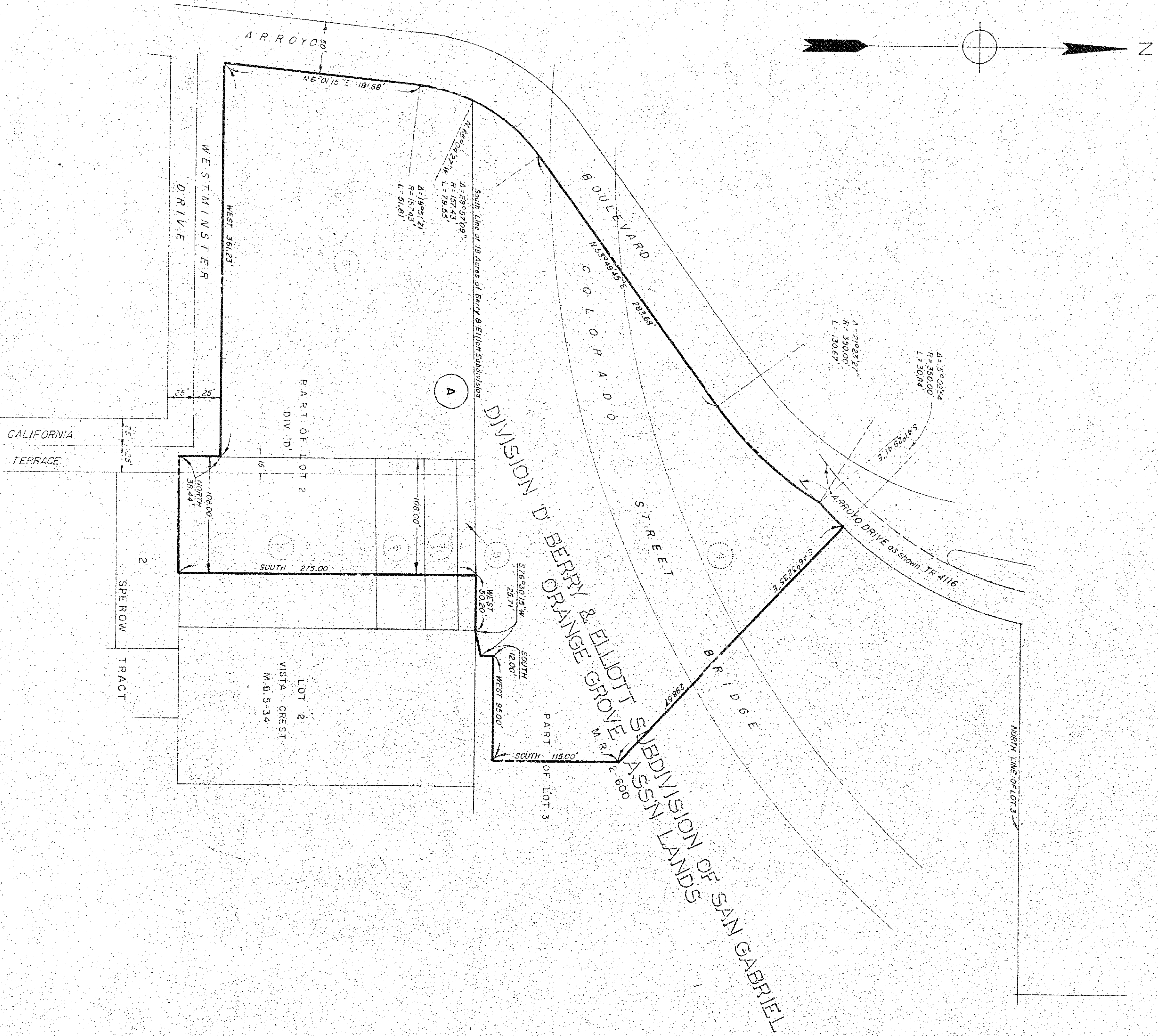
## SEGMENT "1"

CORPS OF ENGINEERS - U.S. ARMY  
 OFFICE OF THE DISTRICT ENGINEER  
 LOS ANGELES, CALIFORNIA

## REAL ESTATE

UNITED STATES ARMY RESERVE CENTER  
 PASADENA, CALIFORNIA  
 MILITARY RESERVATION

Note:  
 The boundary of this installation was compiled from records of County of Los Angeles and Corps of Engineers.



DATE	REVISIONS
10 JAN 1967	FINAL AUDIT

APPROVED BY: *[Signature]* DATE: 19 JAN 1967  
 COLONEL, G. E. DISTRICT ENGINEER  
 OFFICE, CHIEF OF ENGINEERS, WASHINGTON 35, D. C.

RECOMMENDED BY: *[Signature]*  
 CHIEF, PROGRAMS CONTROL BRANCH

DRAWN BY: N.H.A.  
 TRACED BY: W.H.E.  
 CHECKED BY: *[Signature]*

SUBMITTED BY: *[Signature]*

ADDED

INSTALLATION OR PROJECT NO. L1-1-0001

BY: N.H.A.

Scale: 1" = 60 FEET

SHEET 1 OF 1 DRAWING NO. 137-FP-1