

# Attachment D – Walnut St MSTP Map and Tree Species Information



## Tree Species Information



### **Crepe myrtle *Lagerstroemia indica***

#### **Tree Characteristics:**

Drought tolerant

Deciduous foliage. Oval, round, umbrella, or vase shape

Height: 25 feet

Growth rate: 24 inches per year

Shading capacity rated as moderately dense in leaf

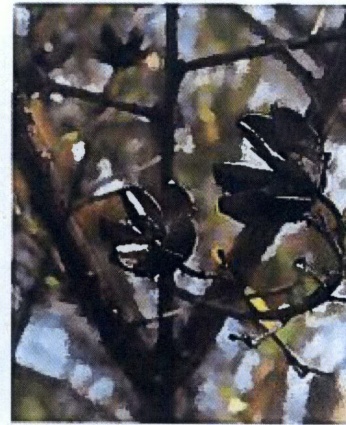
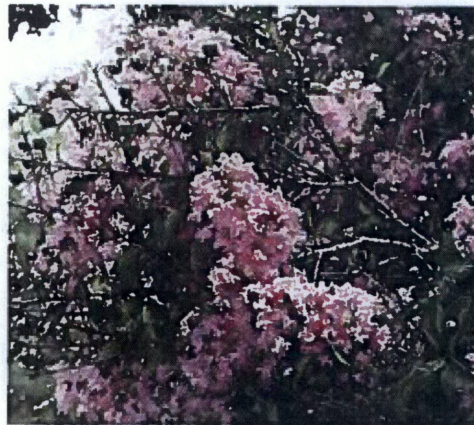
Flowers showy (Summer); litter issue is dry fruit

#### **Health, Safety and Environmental Concerns:**

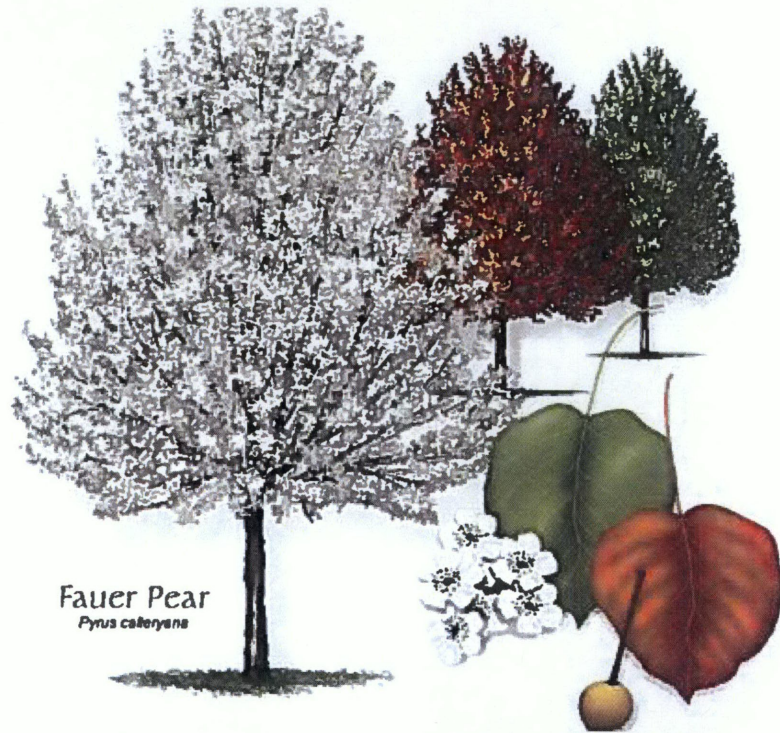
Branch strength rated as medium

Root damage potential rated as low

More information: <http://selectree.calpoly.edu/>



## Tree Species Information



### Ornamental Pear *Pyrus calleryana*

#### Tree Characteristics:

Deciduous foliage. Oval or round shape

Height: 50 feet

Growth rate: 24 inches per year

Shading capacity rated as moderately dense in leaf

Flowers showy and fragrant (spring and winter); litter issue is wet fruit

#### Health, Safety and Environmental Concerns:

Branch strength rated as medium

Root damage potential rated as moderate

Classified as invasive by California Invasive Plant Council

More information: <http://selectree.calpoly.edu/>

