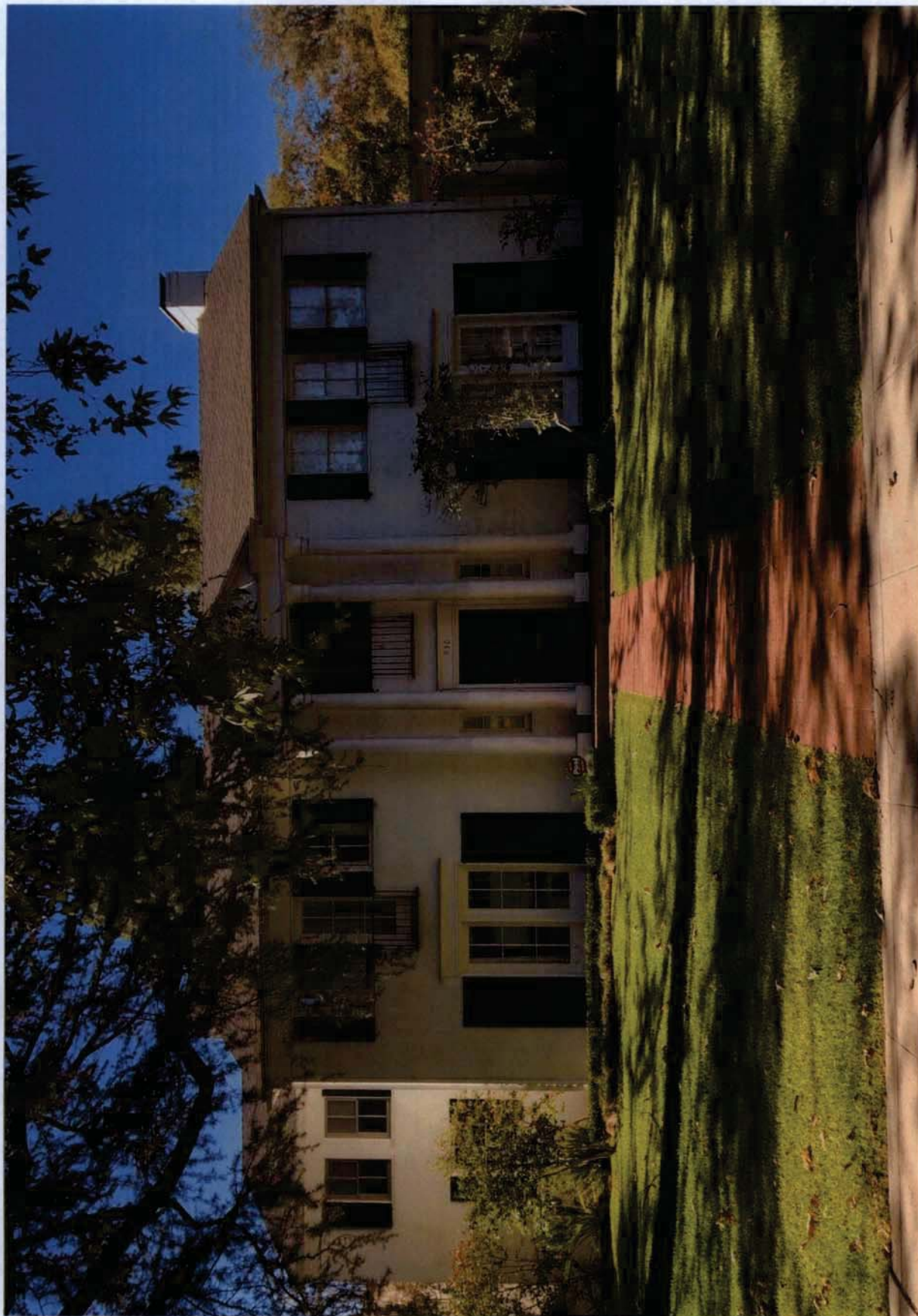
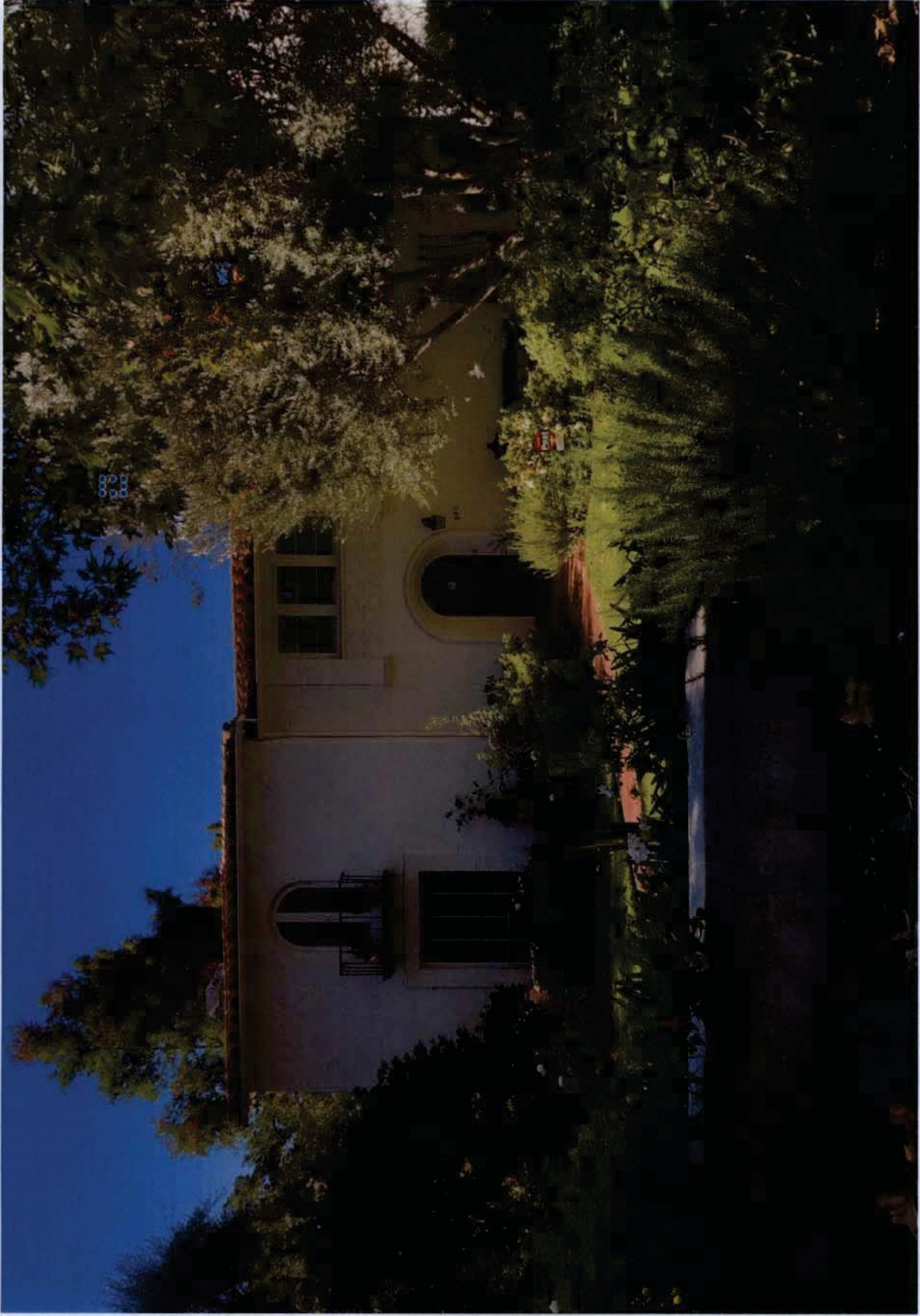


**ATTACHMENT C:**

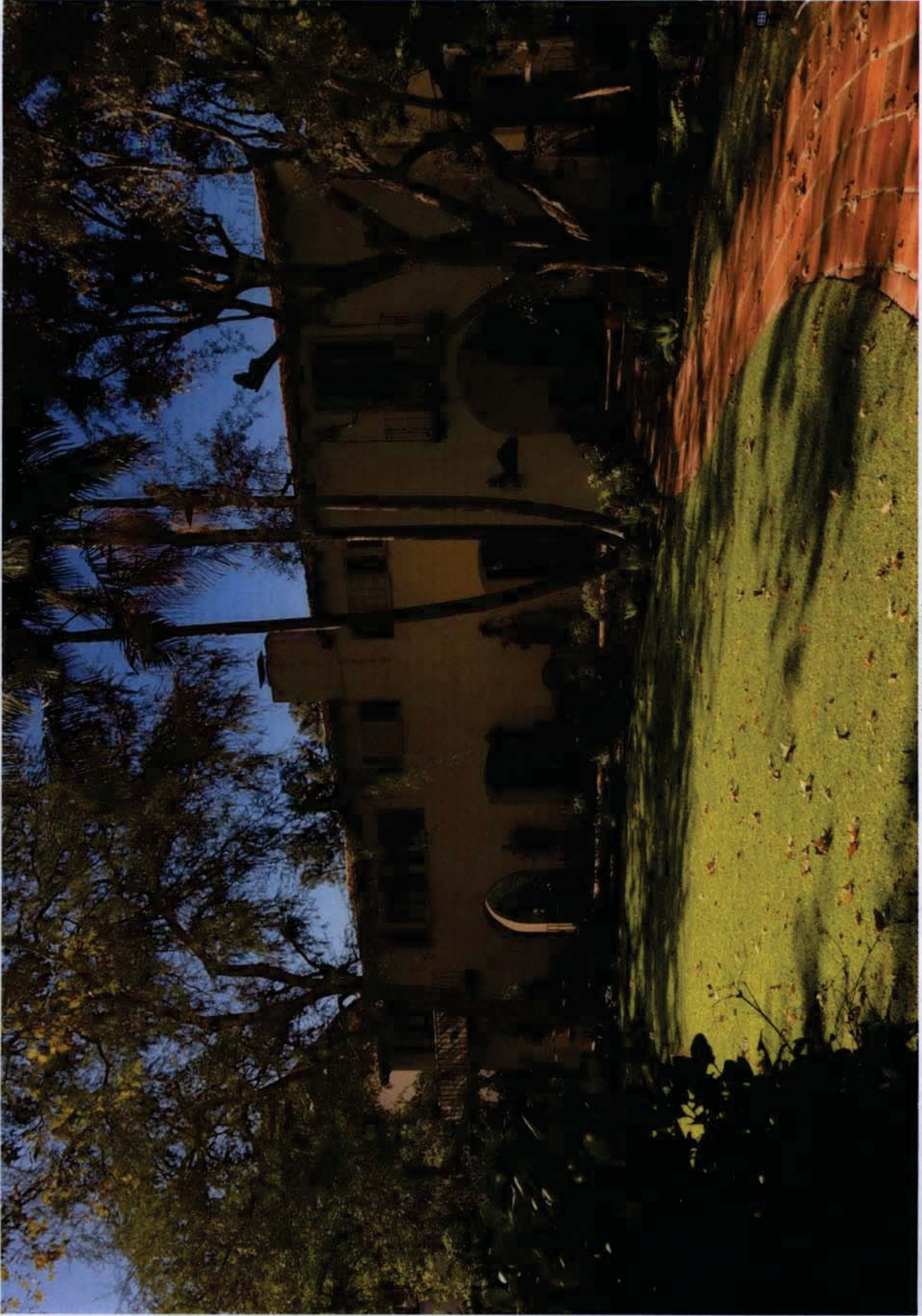
**Photographs of Buildings in Proposed Landmark  
District**



Arden\_930



Arden\_940



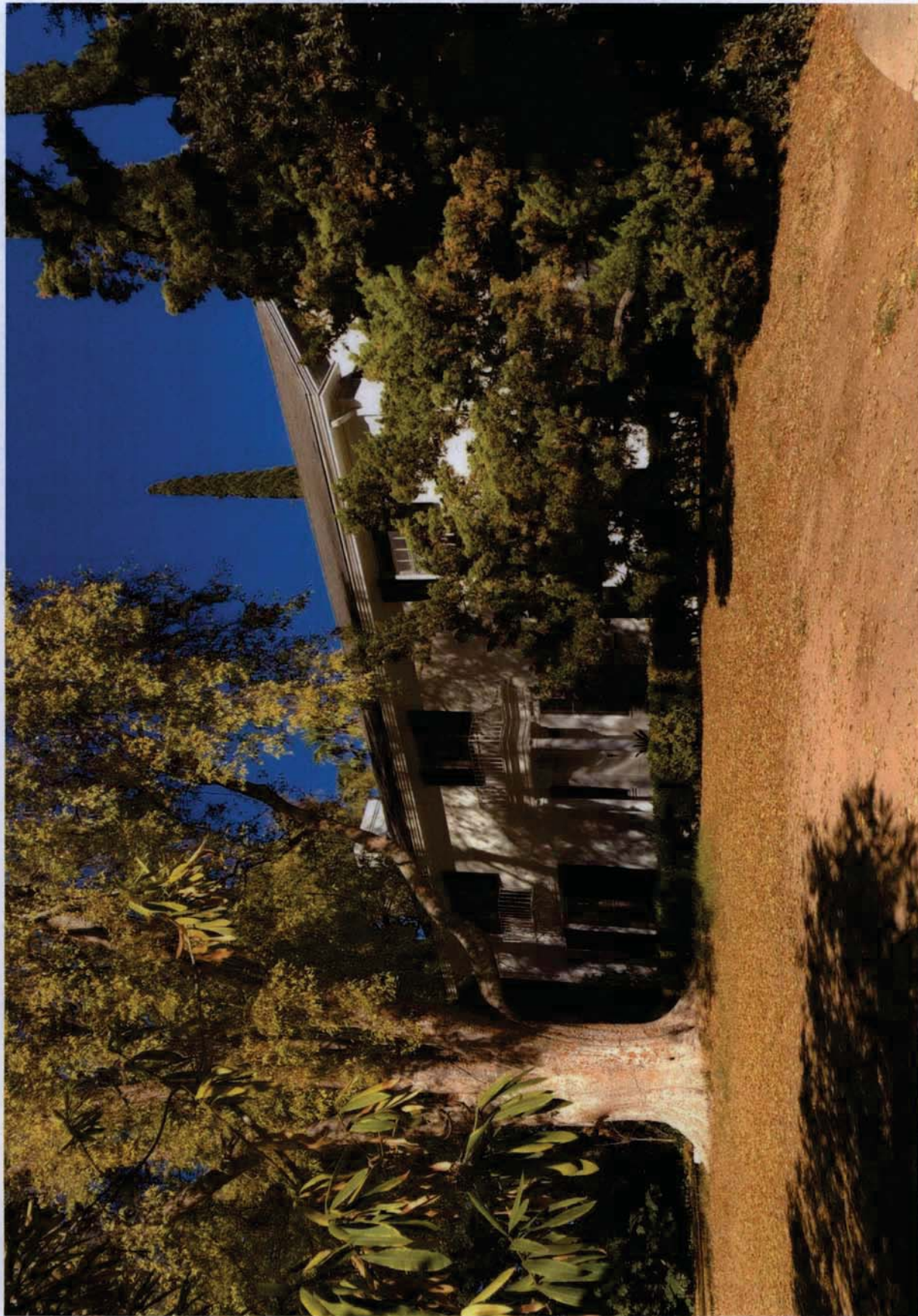
Arden\_950



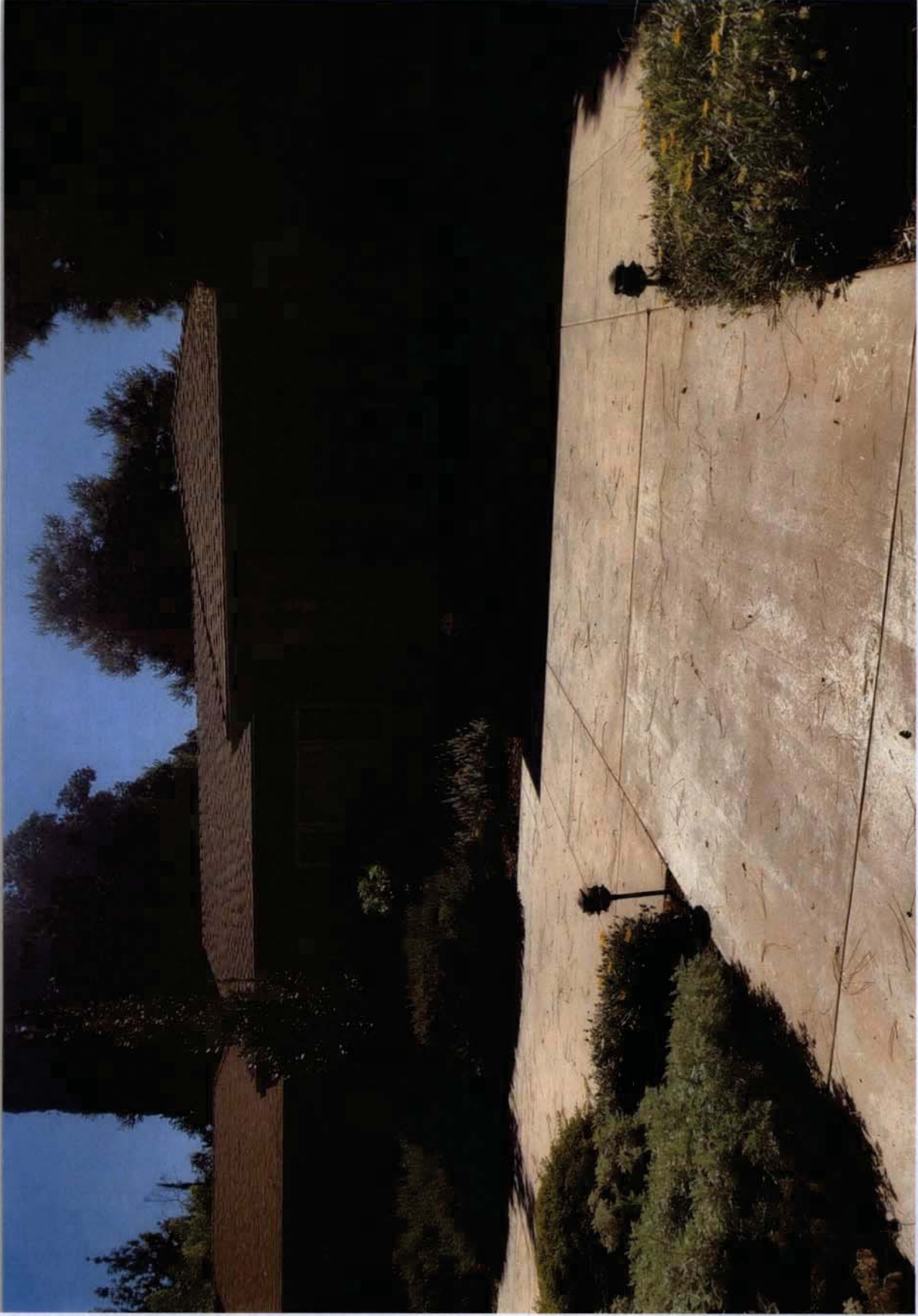
Arden\_965



Arden\_970

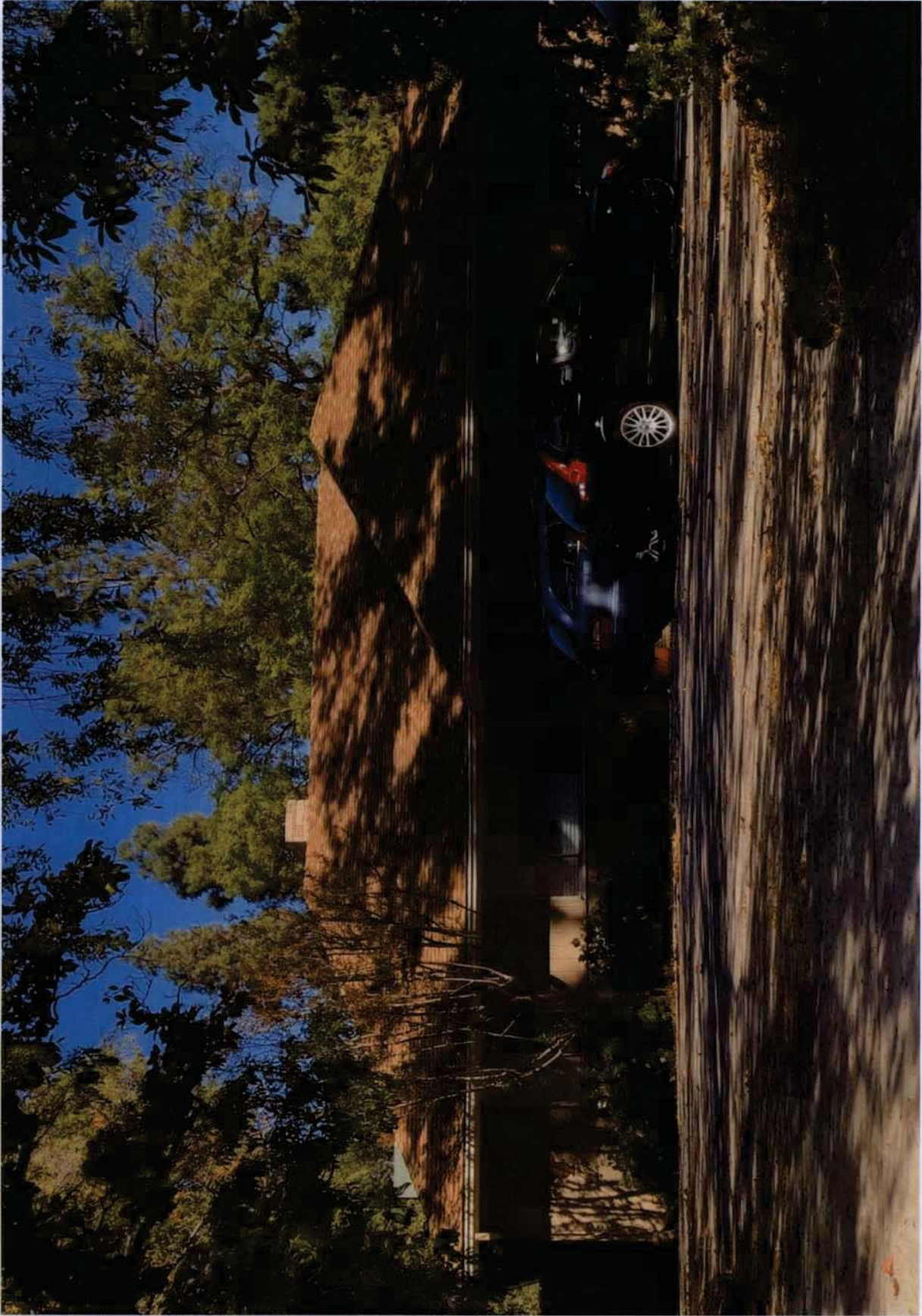


Arden\_981

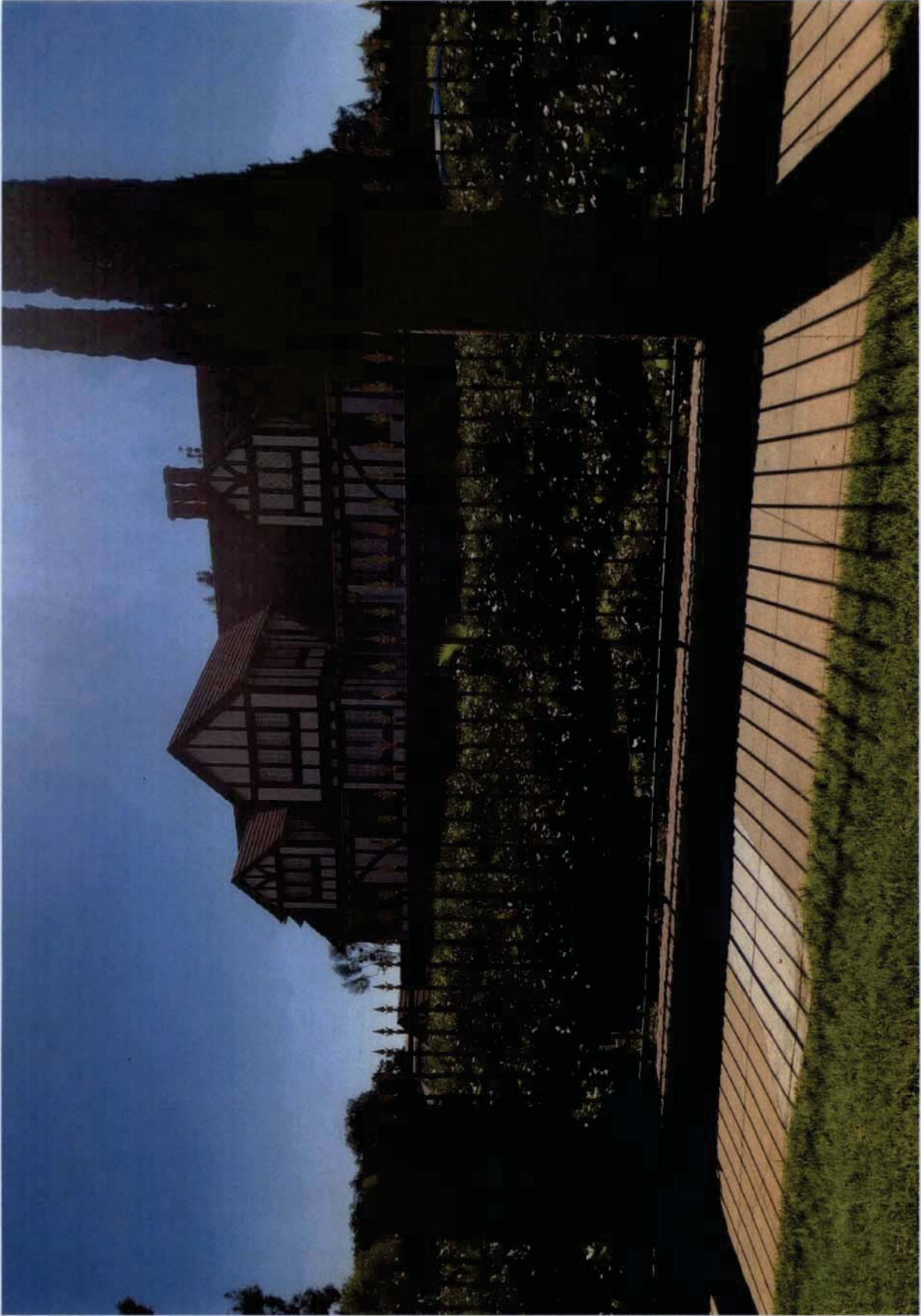


Arden\_1000

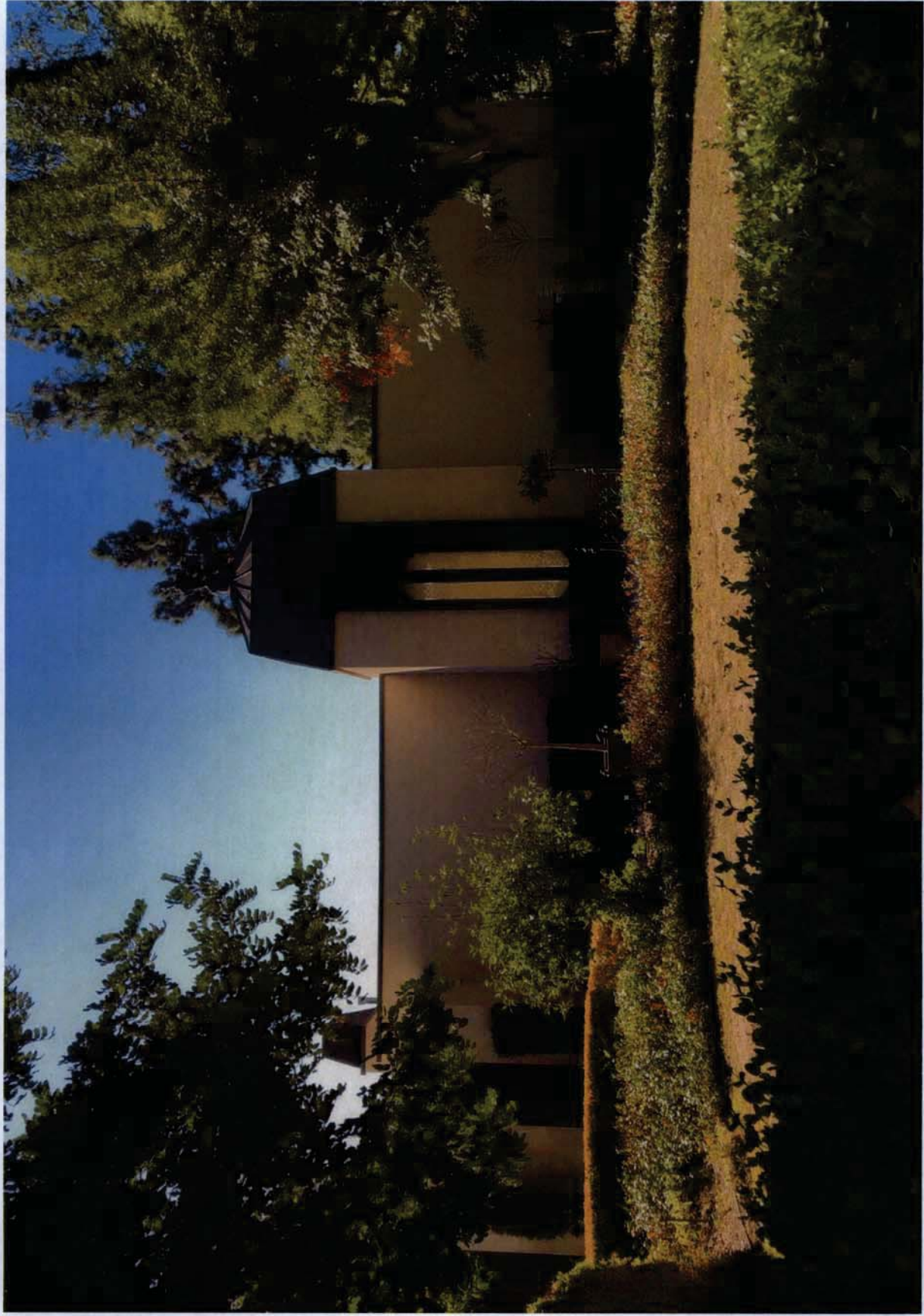




Arden\_1001



Arden\_1050



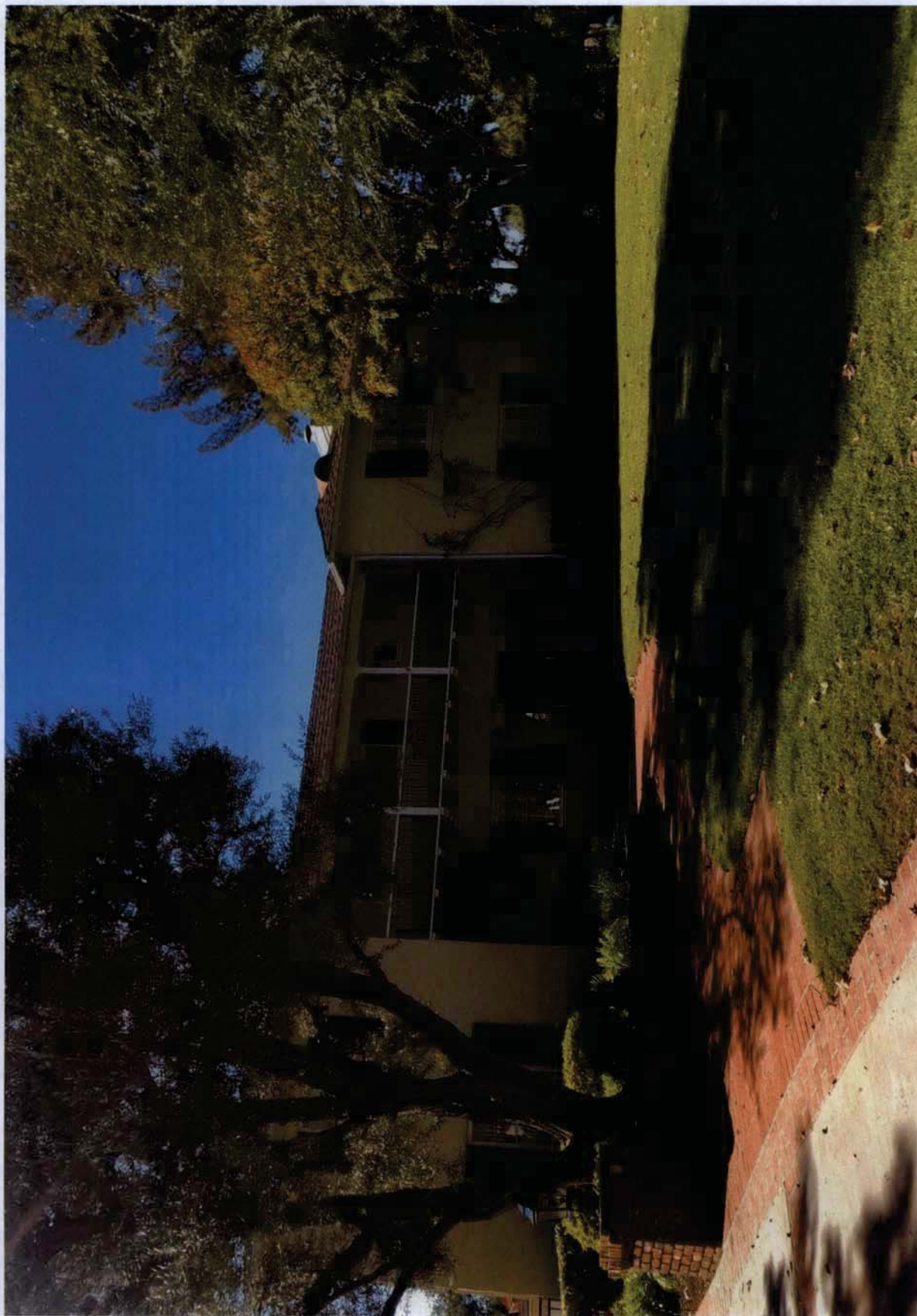
Arden\_1070



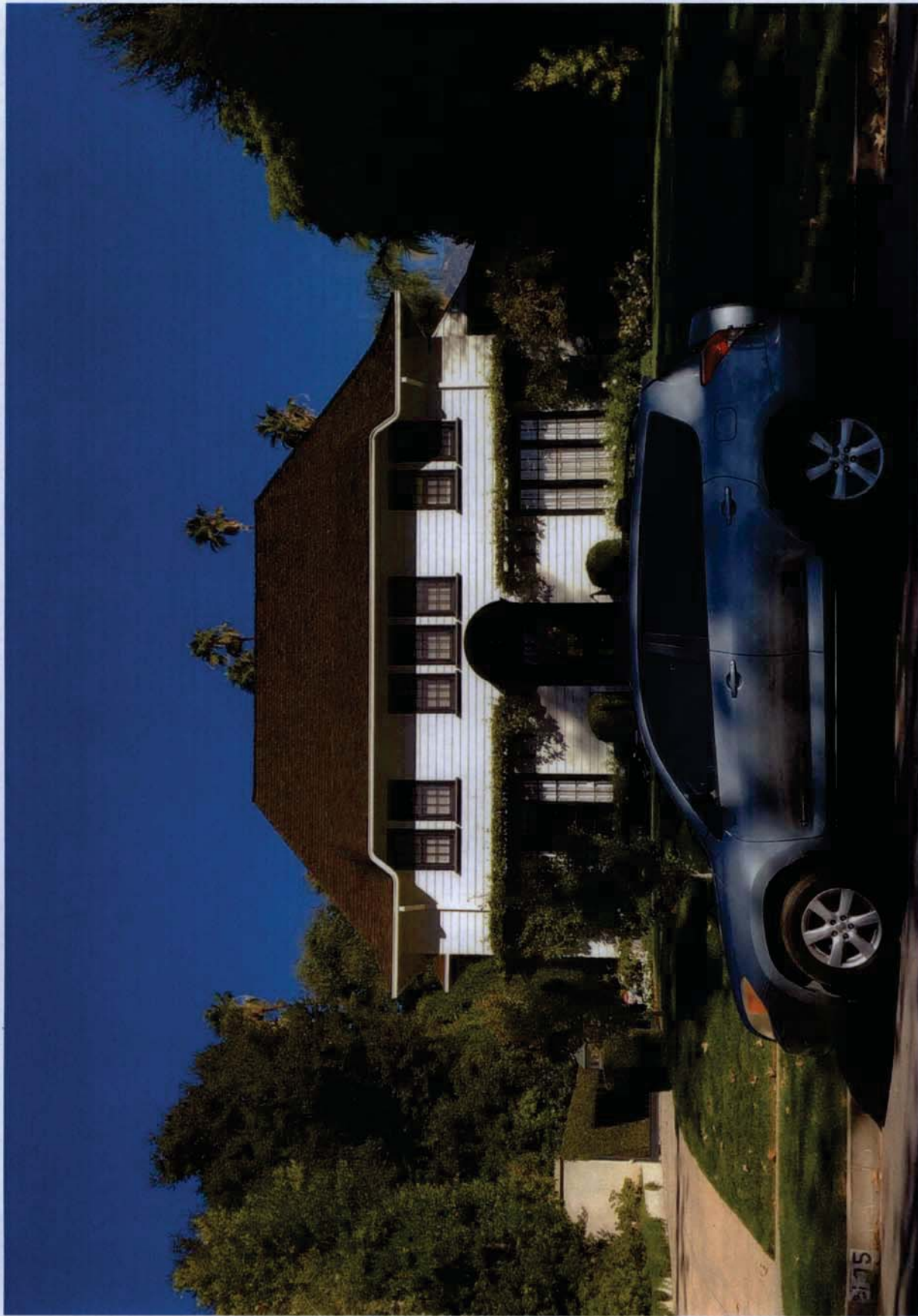
Arden\_1091



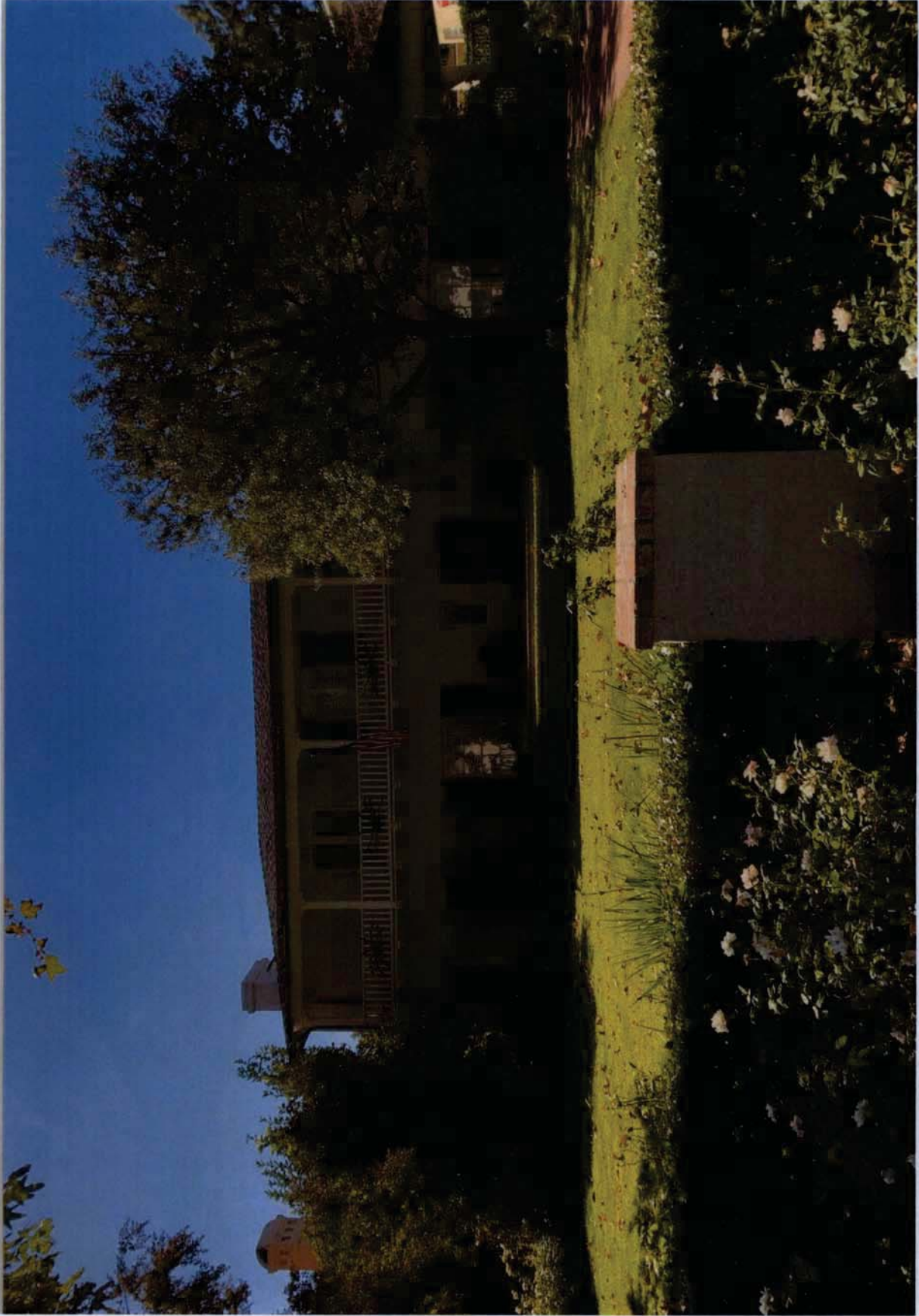
Arden\_1099



Arden\_1102

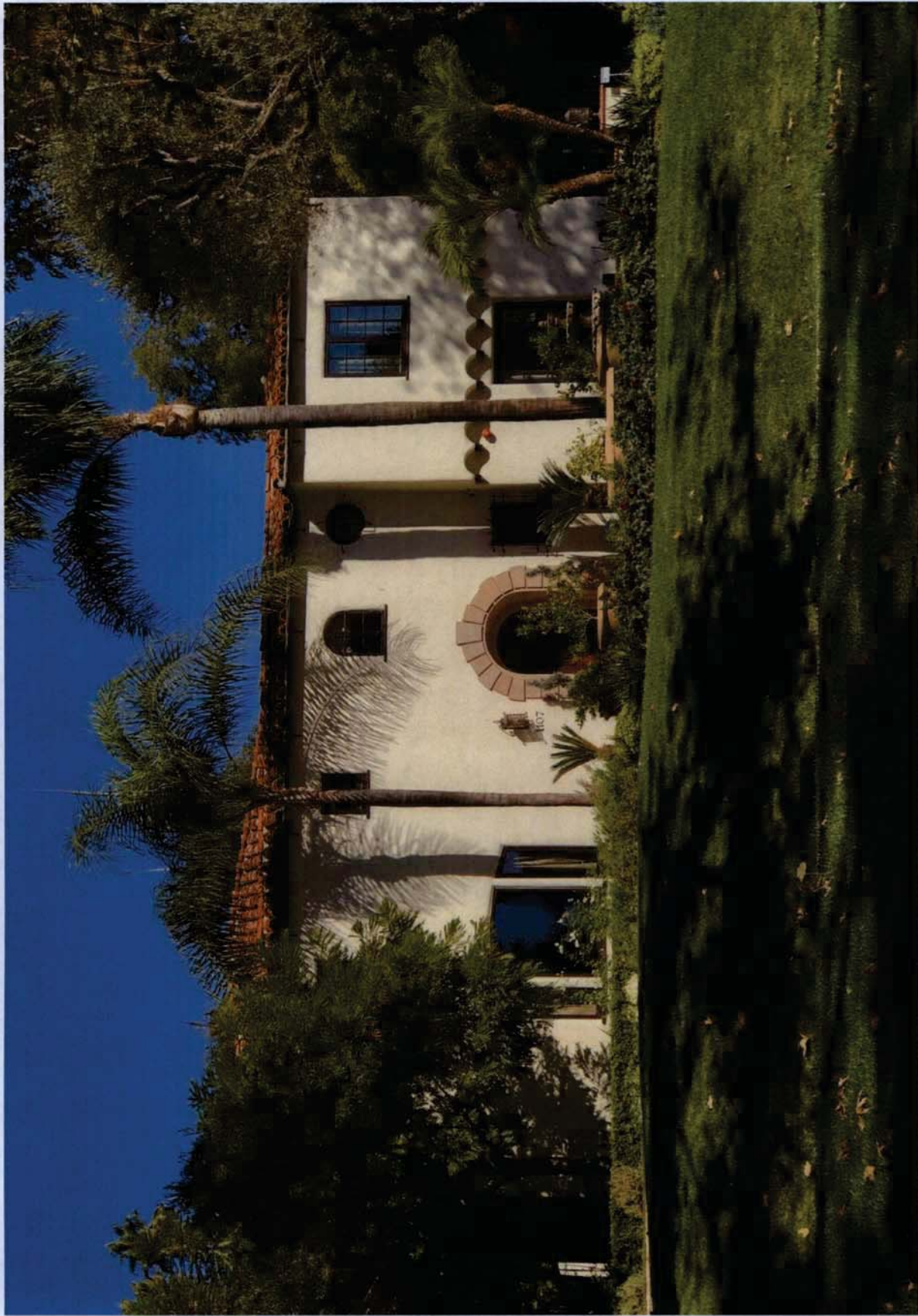


Arden\_1105

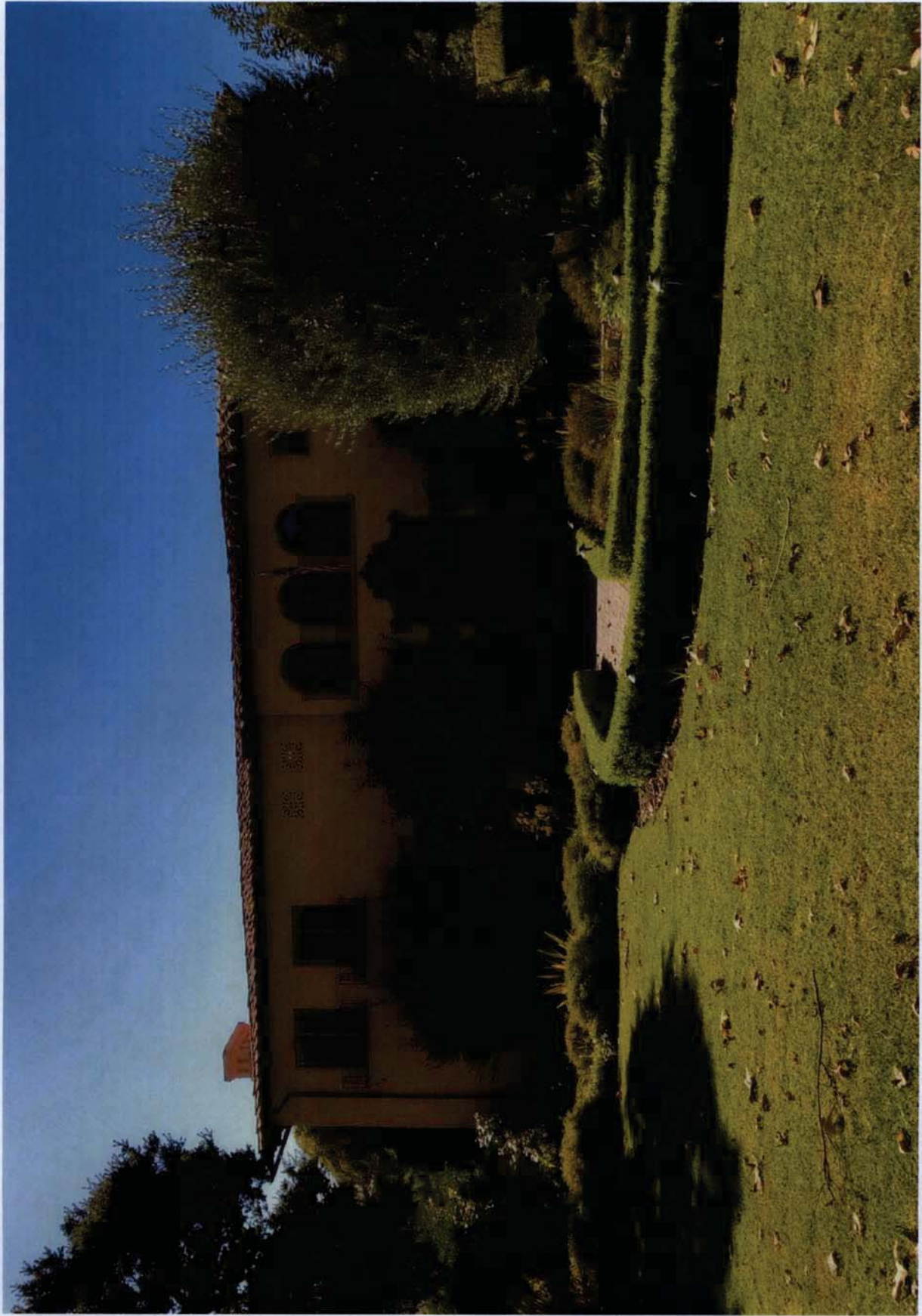


Arden\_1106

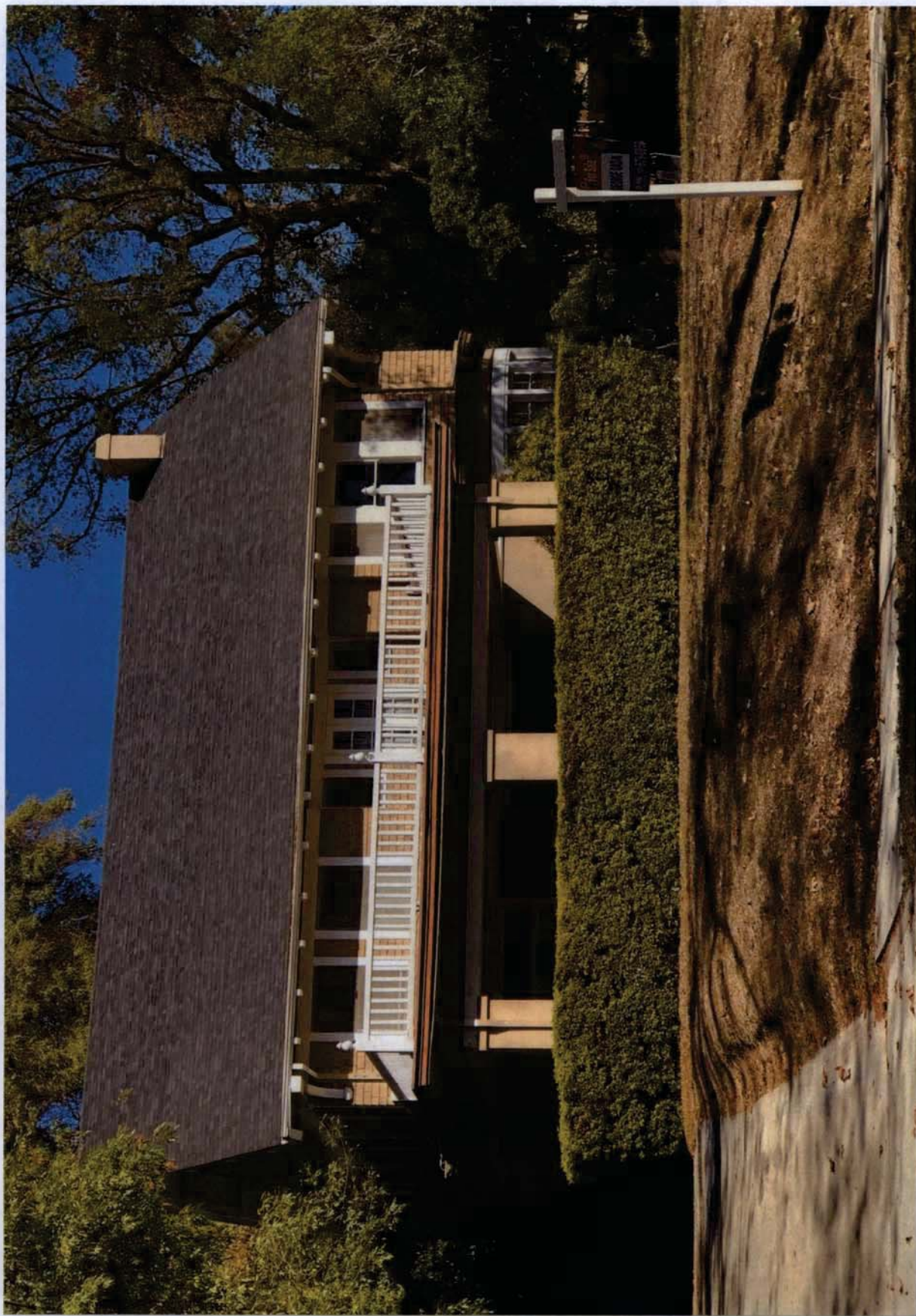




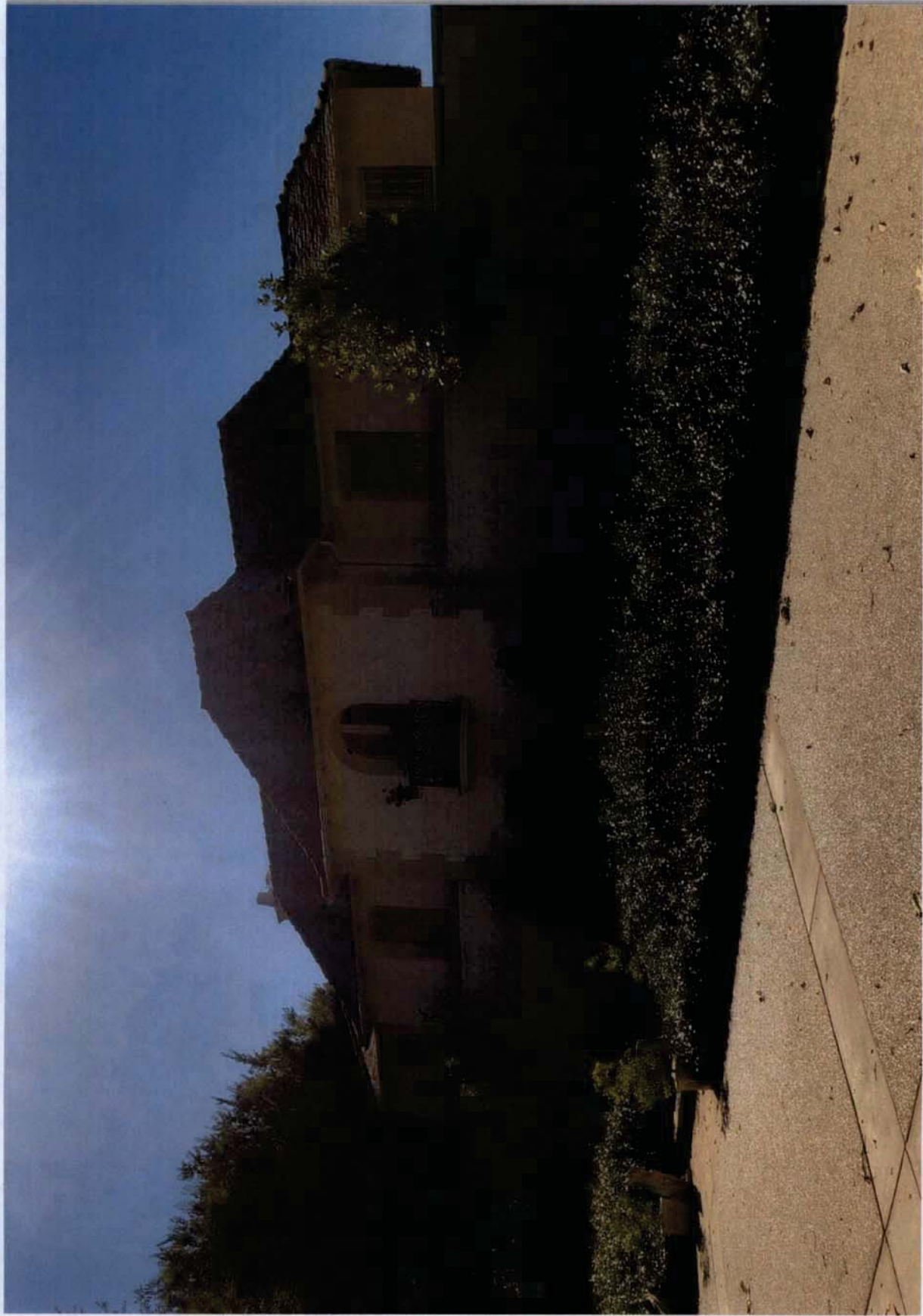
Arden\_1107



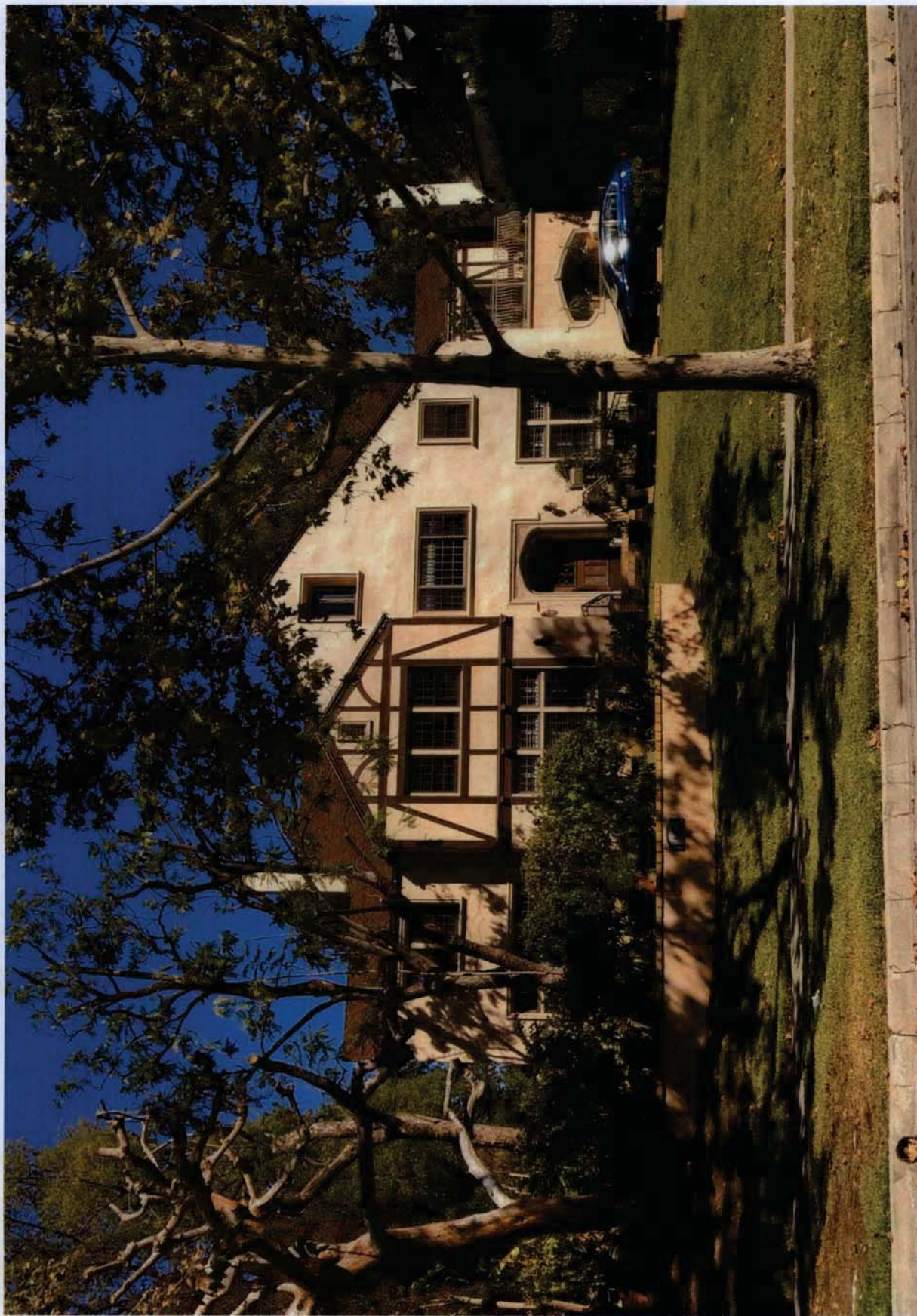
Arden\_1110



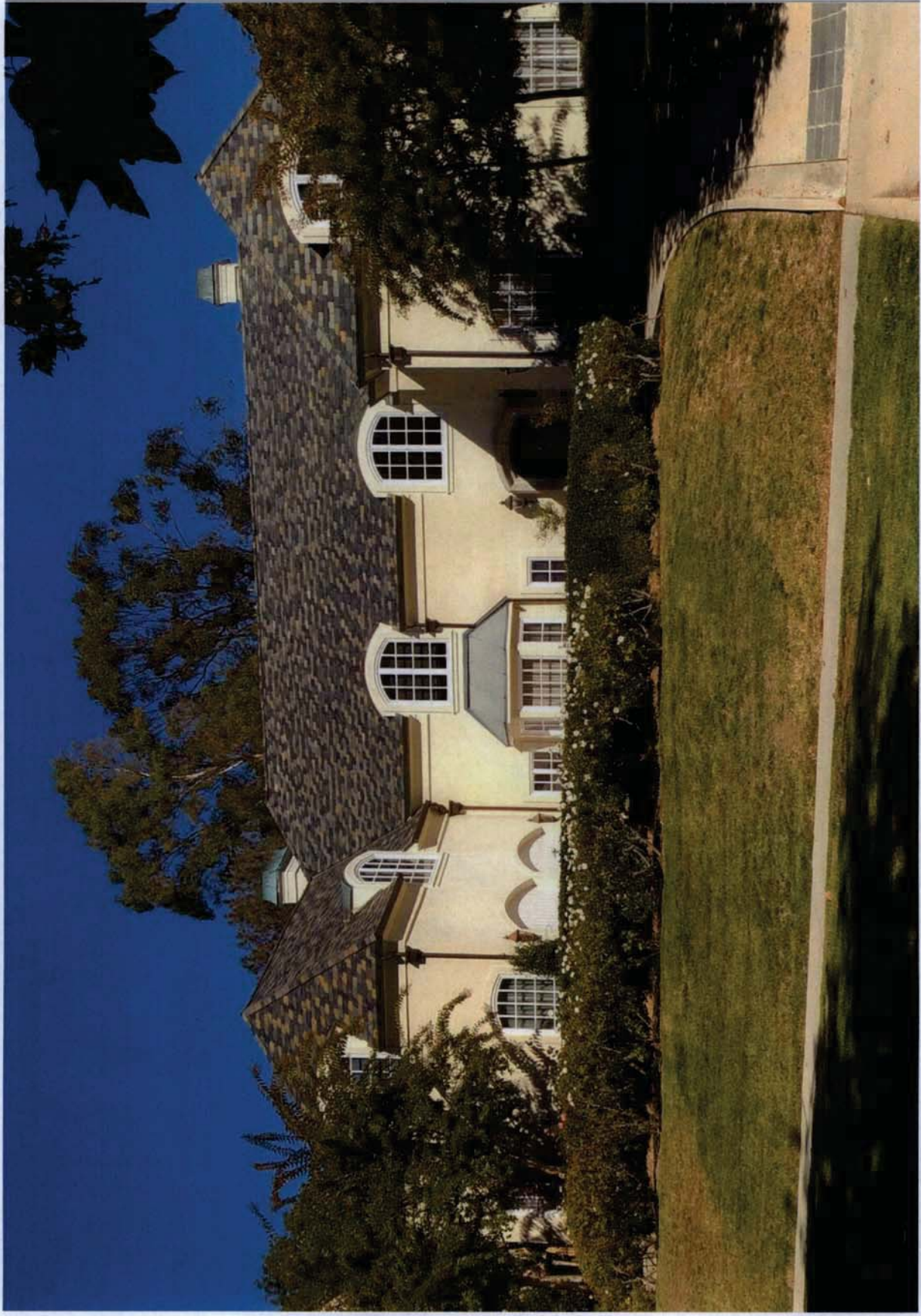
Arden\_1115



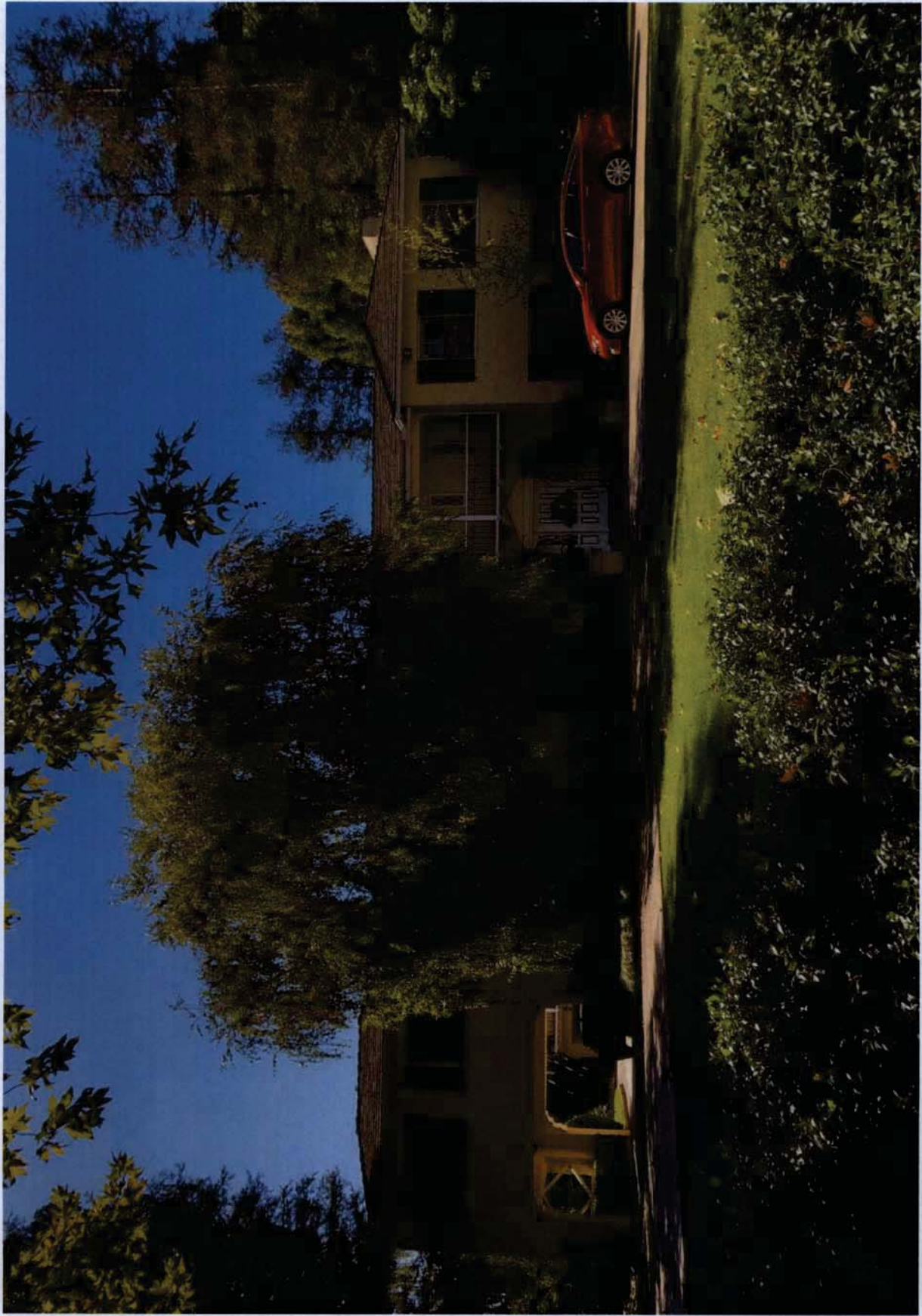
Arden\_1120



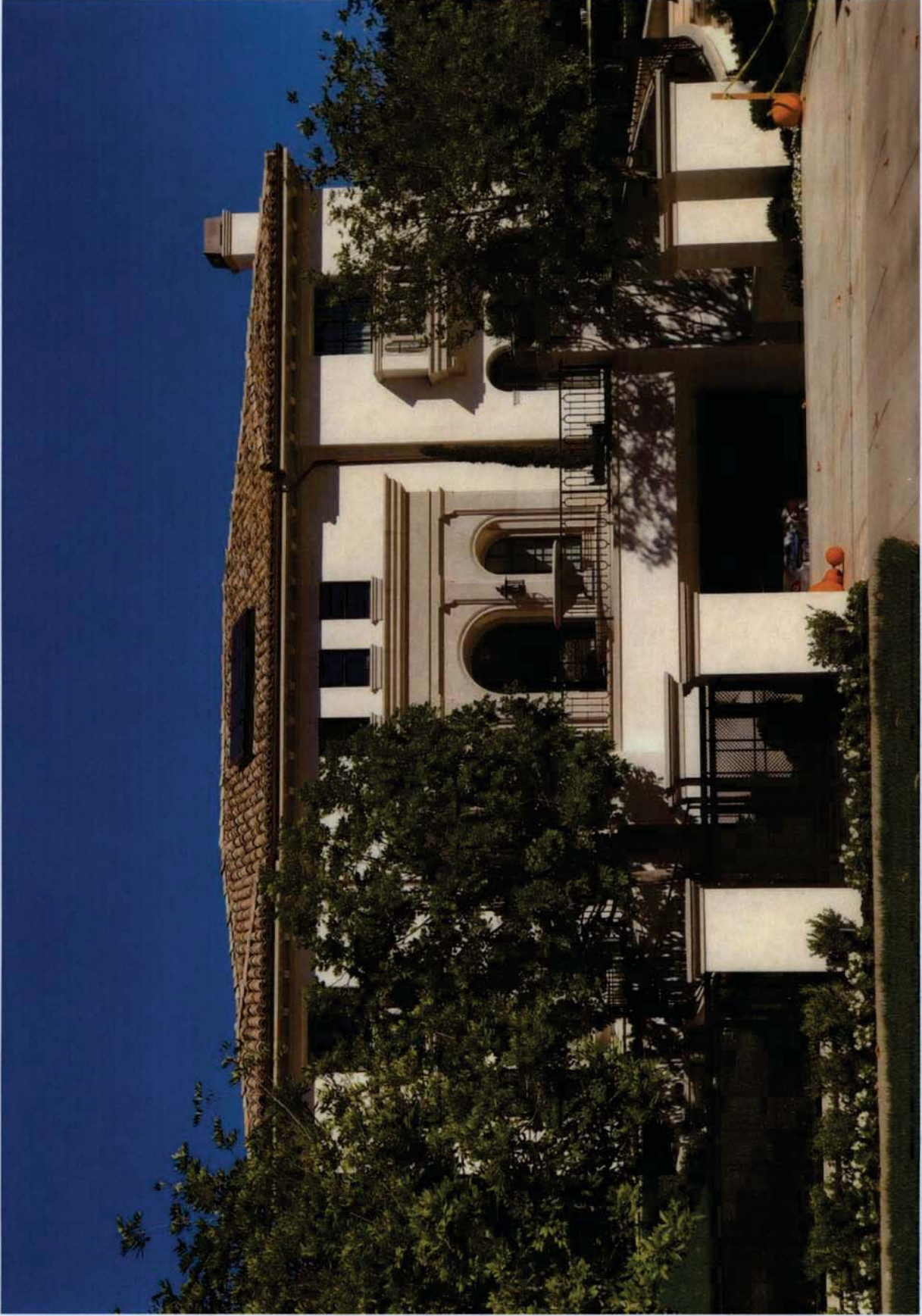
Arden\_1121



Arden\_1125

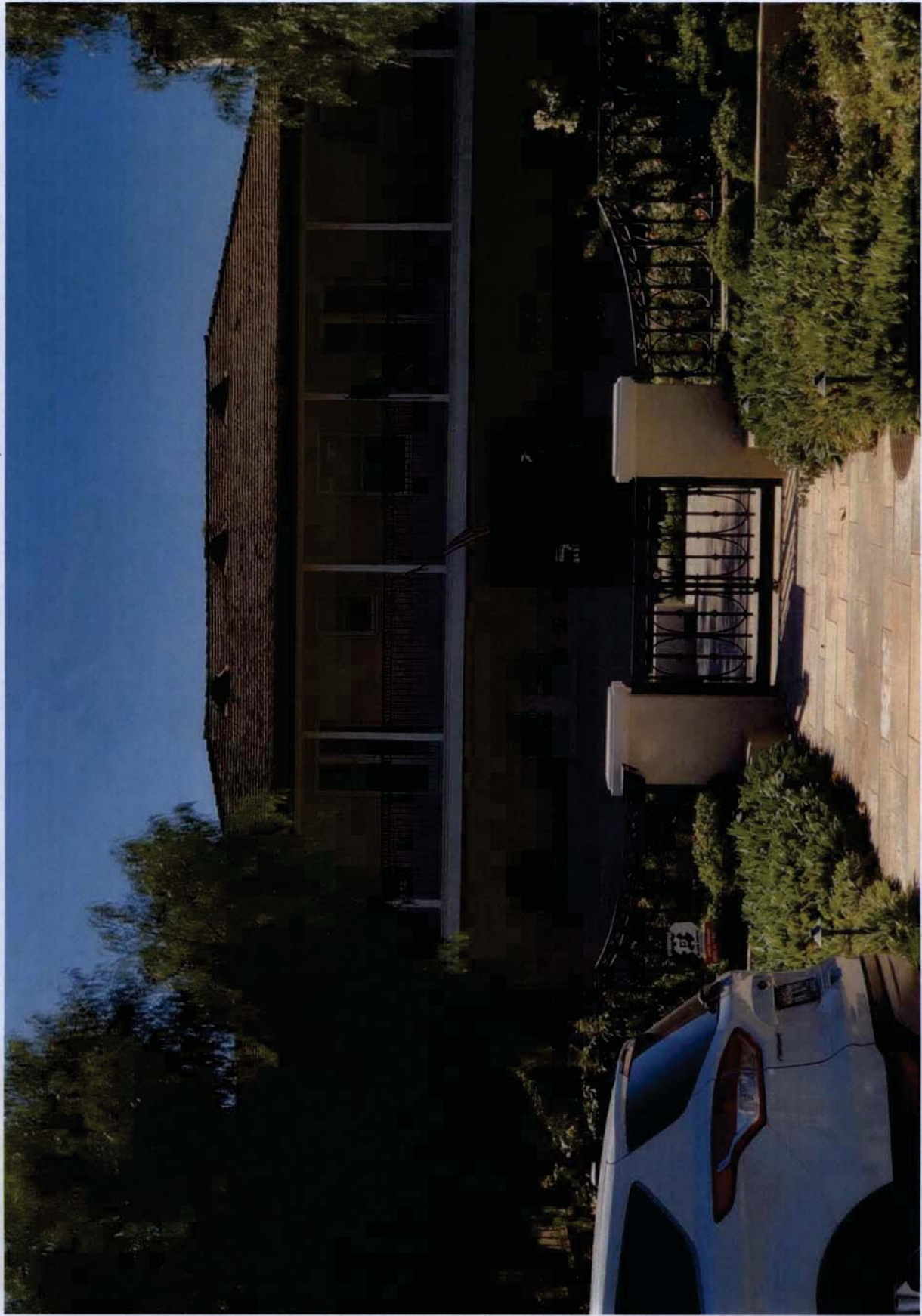


Arden\_1128

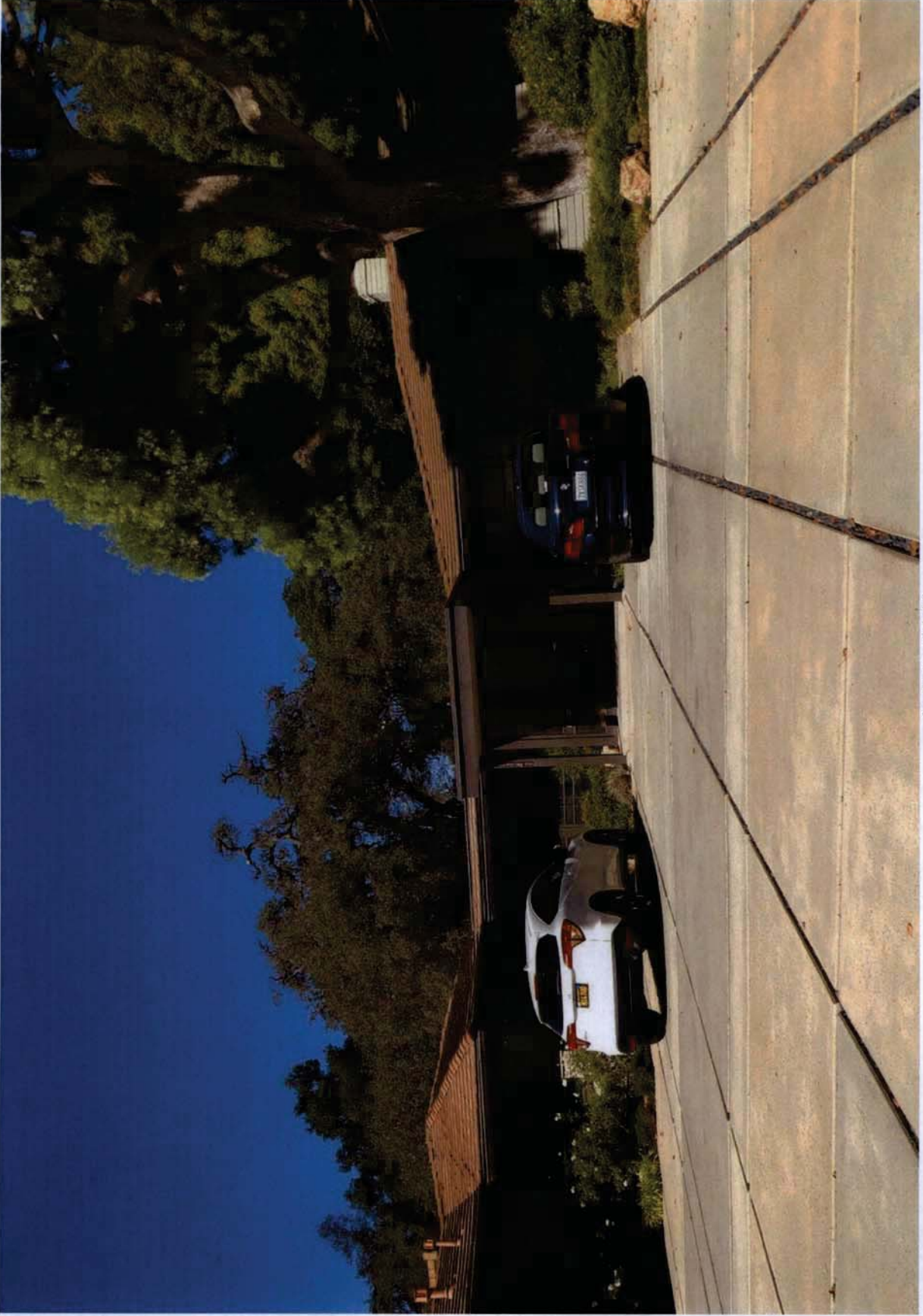


Arden\_1133

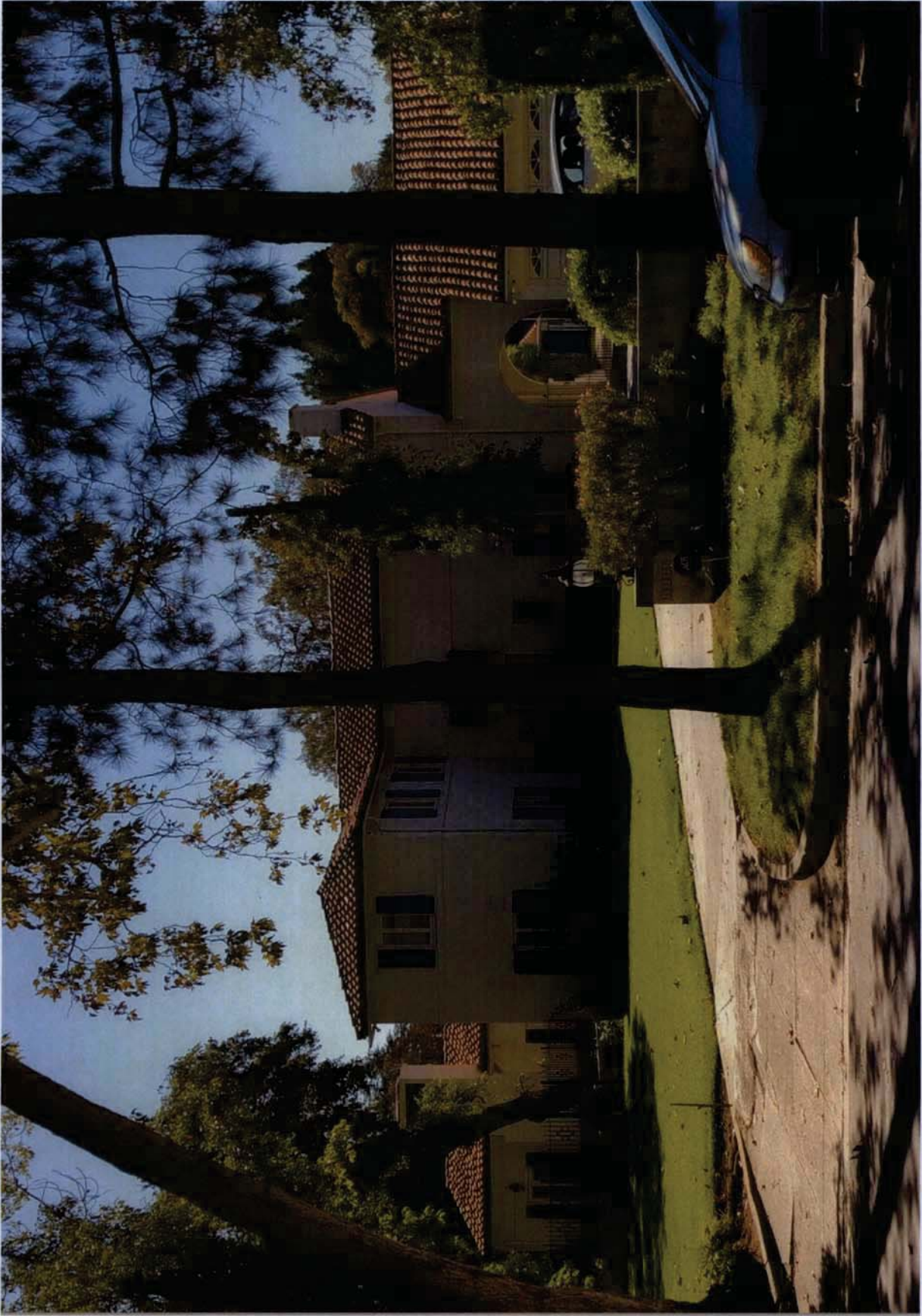




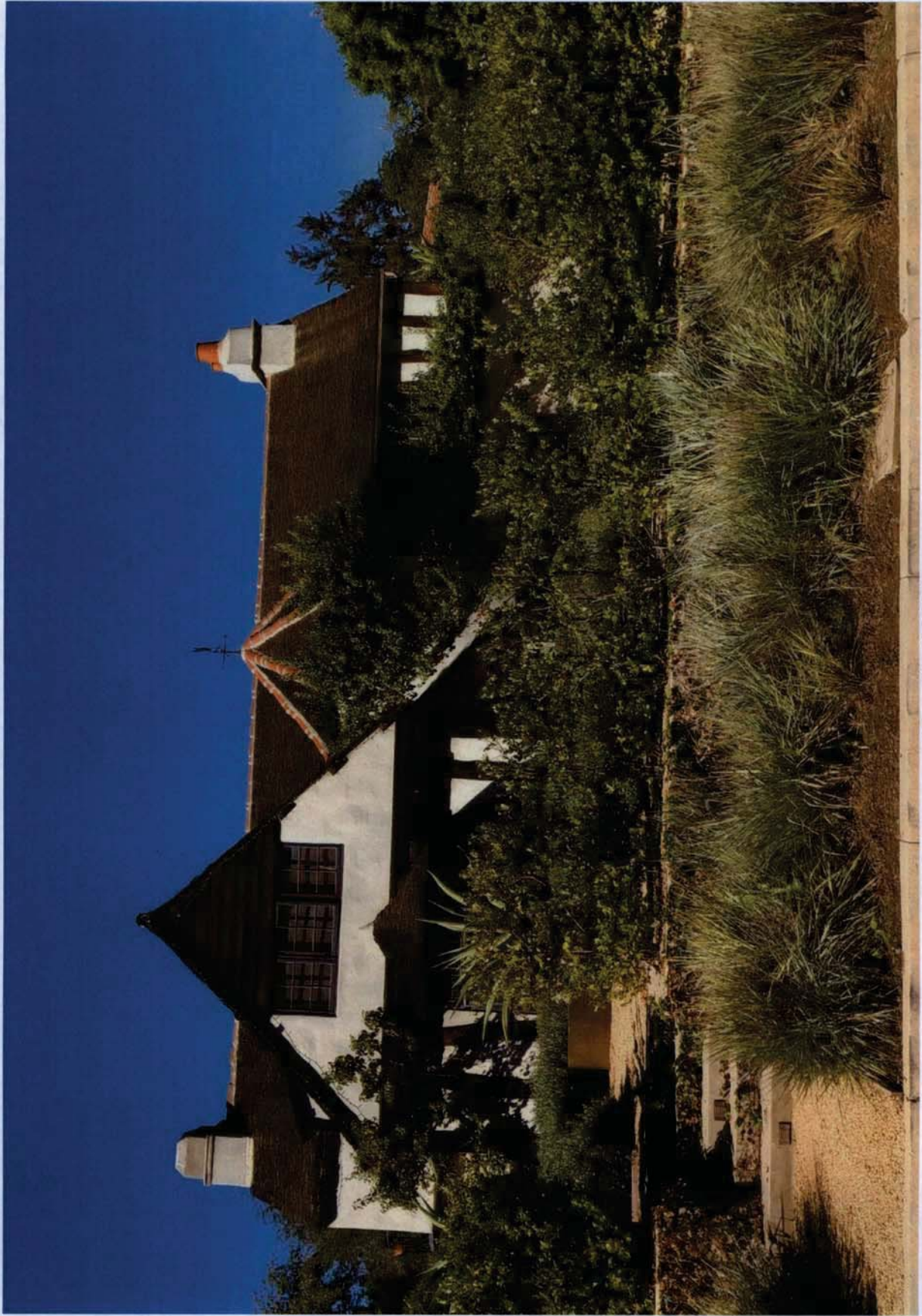
Arden\_1138



Arden\_1141



Arden\_1144



Rosalind\_855