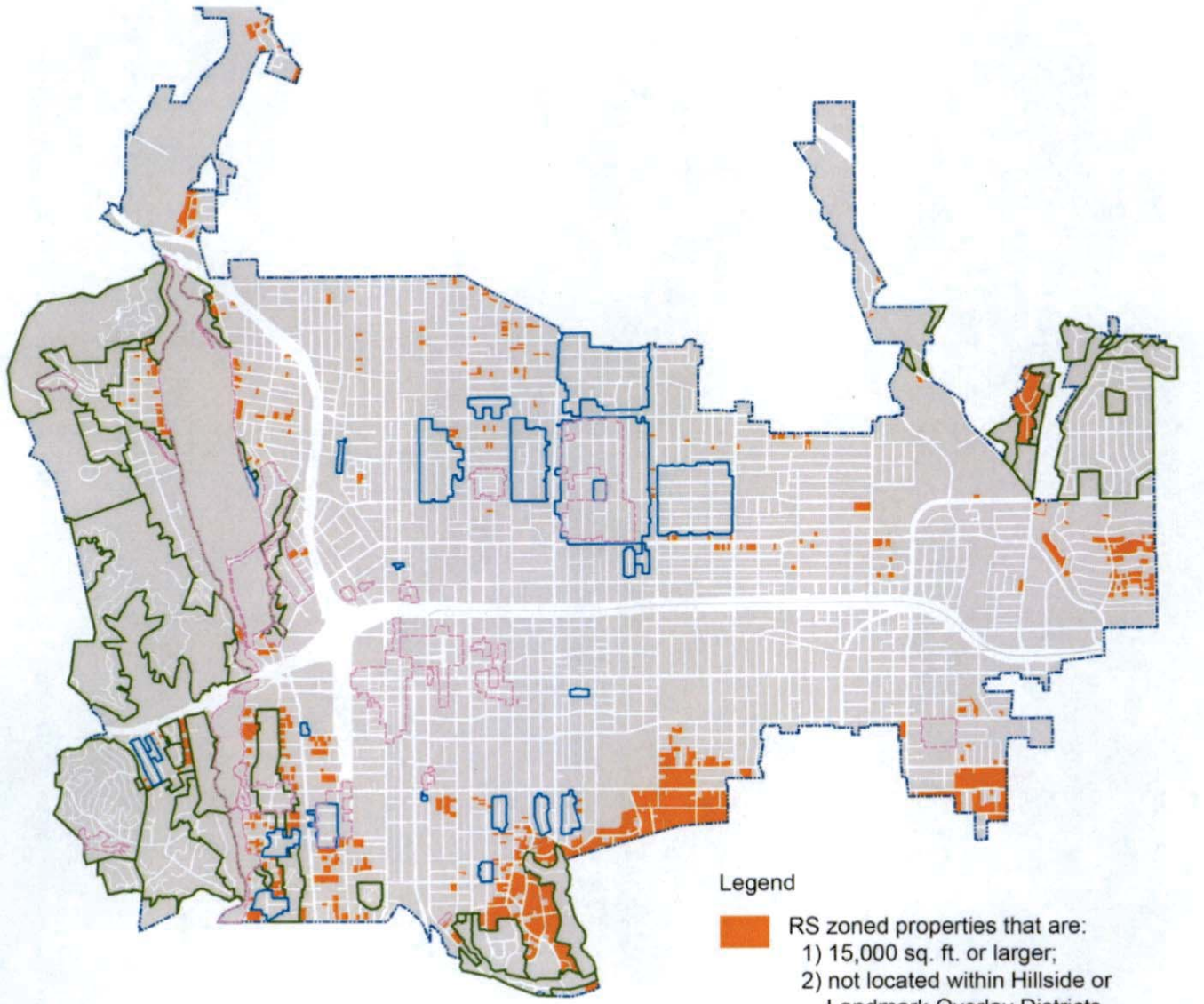


ATTACHMENT E
MAP OF WHERE ACCESSORY DWELLING UNITS ARE
CURRENTLY AND PROPOSED TO BE PERMITTED






Newly Constructed Accessory Dwelling Units

(Accessory Dwelling Units that are created by *Adding New Square Footage*)

- Current Regulations

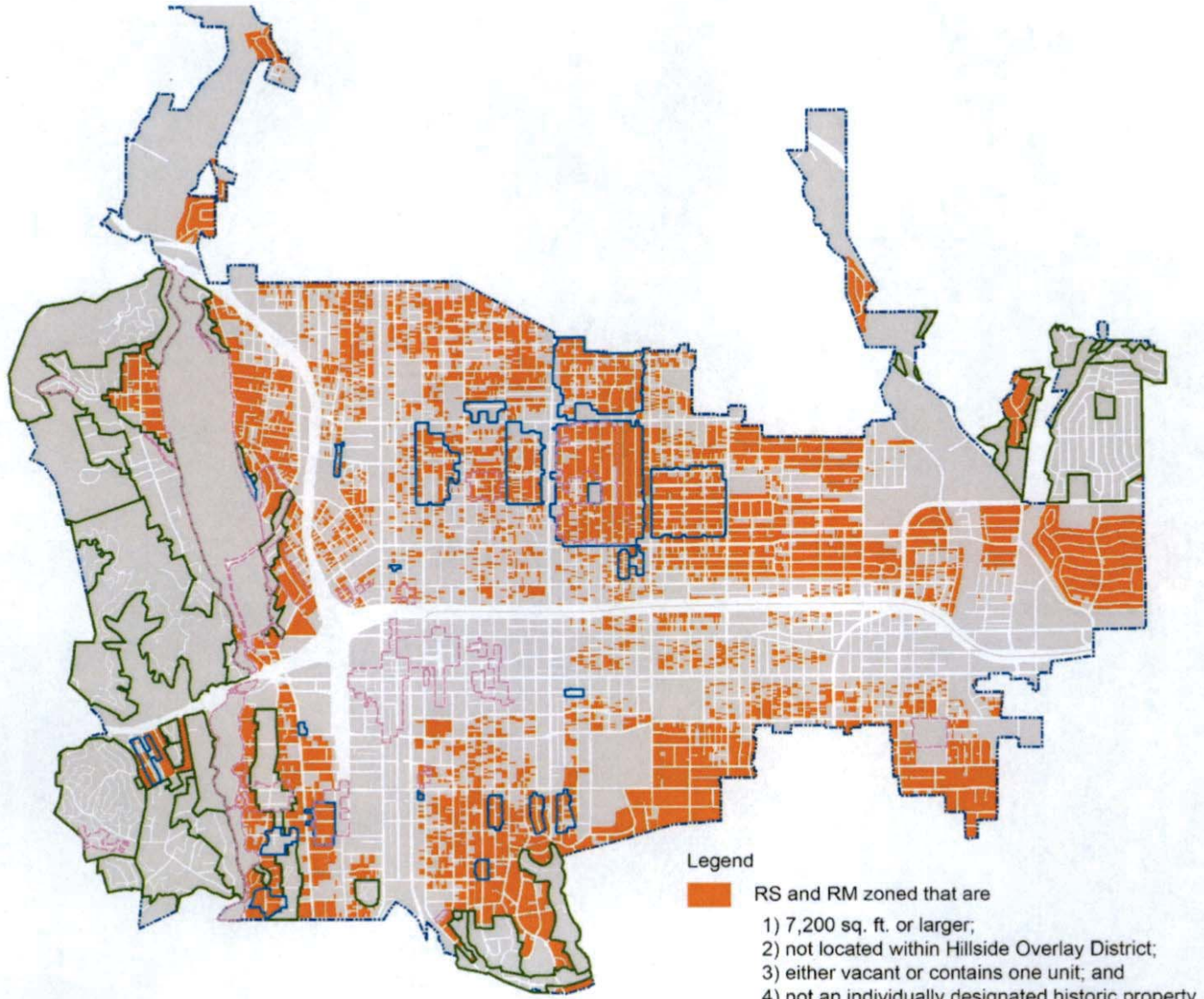


Legend

-  RS zoned properties that are:
1) 15,000 sq. ft. or larger;
2) not located within Hillside or Landmark Overlay Districts
-  Boundary of Hillside Overlay Districts (HD, HD-1, HD-SR)
-  Boundary of Landmark Overlay Districts
-  Boundary of National Register Districts
-  City Boundary

Newly Constructed Accessory Dwelling Units
(Accessory Dwelling Units that are created by *Adding New Square Footage*)

- Proposed Regulations



- Legend
- RS and RM zoned that are
 - 1) 7,200 sq. ft. or larger;
 - 2) not located within Hillside Overlay District;
 - 3) either vacant or contains one unit; and
 - 4) not an individually designated historic property
 - Boundary of Hillside Overlay Districts (HD, HD-1, HD-SR)
 - Boundary of Landmark Overlay Districts
 - Boundary of National Register Districts
 - City Boundary

**Note ADUs prohibited in Landmark Overlay Districts if visible from the street*

Converted Accessory Dwelling Units
(Accessory Dwelling Units that are created by *Converting Existing Space*)

- Current Regulations (No Change)

