

**ATTACHMENT E  
PROJECT PLANS**





**BIRDS EYE VIEW**



**3D RENDERINGS**  
**Pasadena, California**

File Name: 13-134 Rendering Views

7-3-13  
Revised: 11-5-13  
Revised: 12-2-13

**MCUP 6084**

**C · R · H · O**  
Architecture Interiors Planning  
195 South "C" Street Suite 200  
Tustin, California 92780  
714 832 1834  
FAX 714 832 1910





**NORTHWEST VIEW**



**3D RENDERINGS**  
**Pasadena, California**

File Name: 13-134 Rendering Views

7-3-13  
Revised: 11-5-13  
Revised: 12-2-13

**MCUP 6084**

**C · R · H · O**  
Architecture Interiors Planning  
195 South "C" Street Suite 200  
Tustin, California 92780  
714 832 1834  
FAX 714 832 1910





**SOUTHWEST VIEW**



**3D RENDERINGS**  
**Pasadena, California**

File Name: 13-134 Rendering Views

7-3-13  
Revised: 11-5-13  
Revised: 12-2-13

**MCUP 6084**

**C · R · H · O**  
Architecture Interiors Planning  
195 South "C" Street Suite 200  
Tustin, California 92780  
714 832 1834  
FAX 714 832 1910





**NORTHEAST VIEW**



**3D RENDERINGS**  
**Pasadena, California**

File Name: 13-134 Rendering Views

7-3-13  
Revised: 11-5-13  
Revised: 12-2-13

**MCUP 6084**

**C · R · H · O**

Architecture Interiors Planning

195 South "C" Street Suite 200

Tustin, California 92780

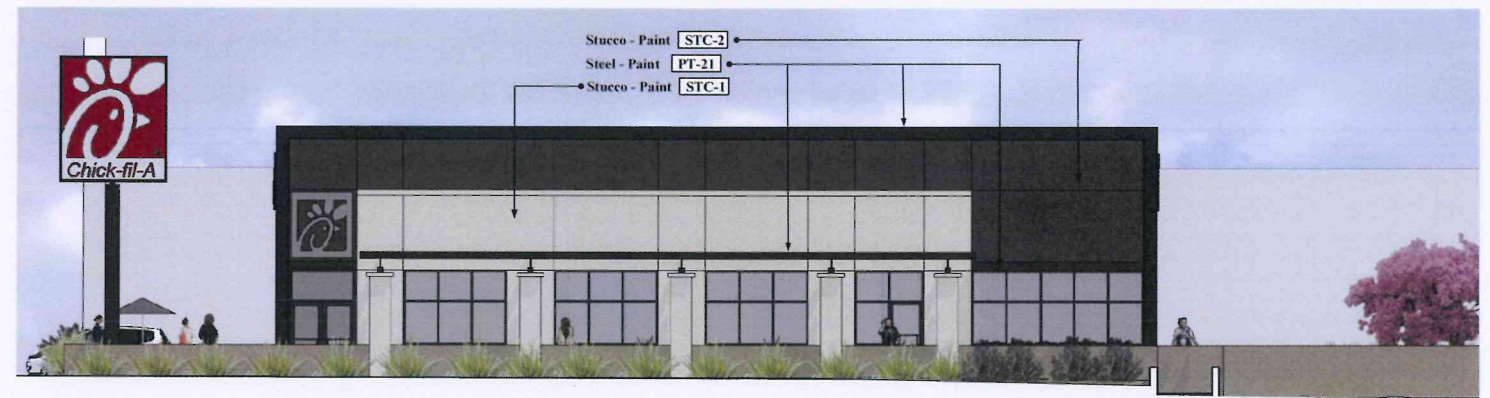
714 832 1834

FAX 714 832 1910





**SOUTH ELEVATION**



**WEST ELEVATION**



**NORTH ELEVATION**



**EAST ELEVATION**



**PRELIMINARY ELEVATIONS**  
Pasadena, CA

File Name: 13134 - ALL7-3-13

7-3-13  
Revised: 11-4-13  
11-6-13  
12-2-13  
12-6-13  
04-1-14

**Note:**  
All roof top mechanical equipment shall be located in equipment well and screened from view by parapet walls.

**COLOR AND MATERIAL LEGEND**

- STC-1** Paint - Sherwin Williams Flat - #SW7541 "Grecian Ivory"
- STC-2** Paint - Sherwin Williams Flat - #SW7664 "Steely Gray"
- PT-21** Paint - Sumter Coatings - "Metal Master Flat Black"
- WD-21** Resysta Rain Screen - "Burma" FVG C-08
- AL-1** Aluminum Panel - Reynobond Colorweld 500 - Color "PT-21"

C · R · H · O

Architecture Interiors Planning

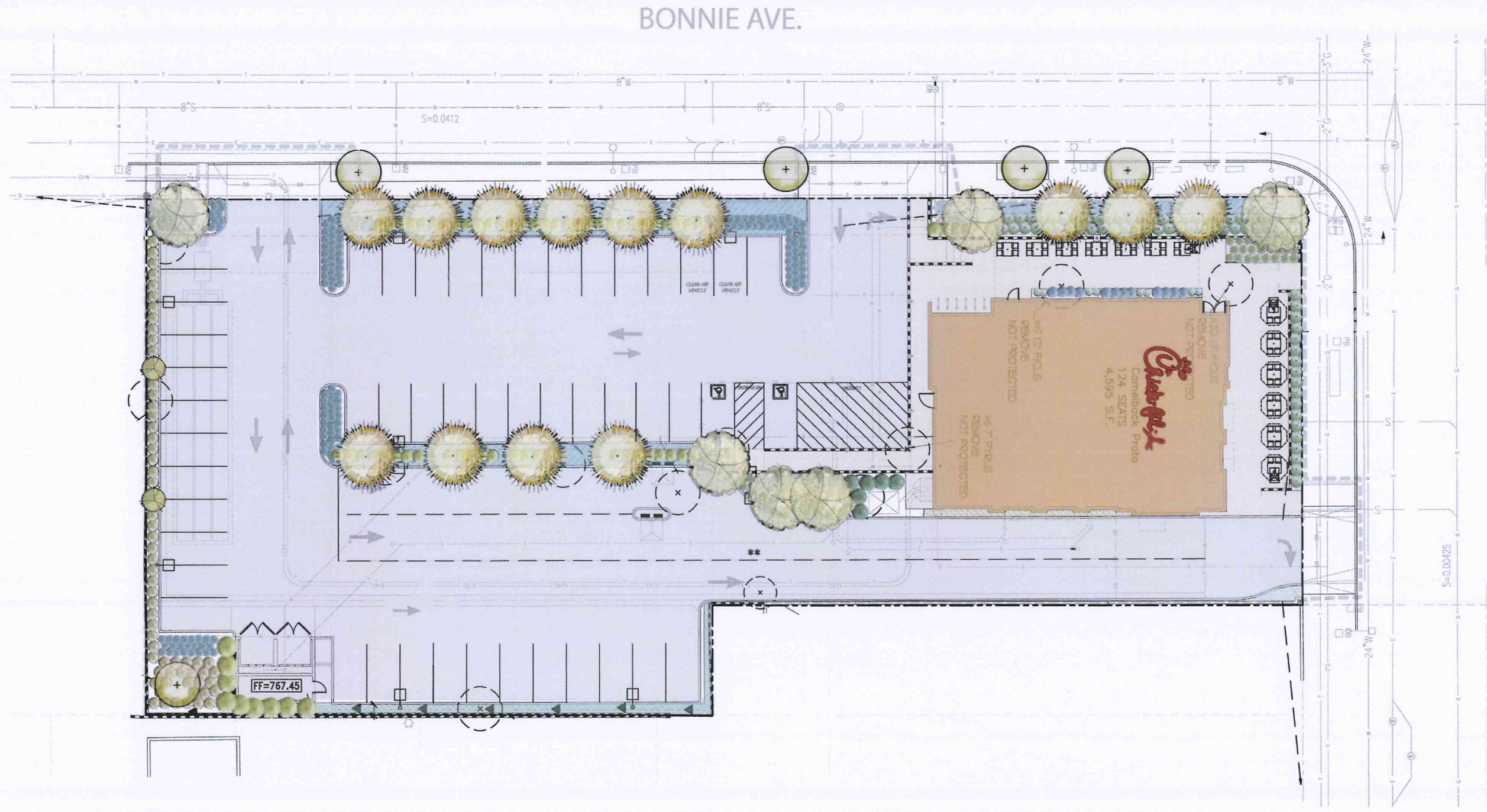
195 South "C" Street Suite 200

Tustin, California 92780

714 832 1634

FAX 714 832 1910





BONNIE AVE.

COLORADO BLVD.

**COLOR SITE PLAN**  
**1700 E. Colorado Blvd.**  
**Pasadena, CA**  
**MCUP 6084**



**Chick-fil-A**  
 5200 Buffington Rd.  
 Atlanta Georgia,  
 30349-2998

Revisions:

Mark	Date	By
△		
△		
△		



**C · R · H · O**  
 Architecture Interior Planning  
 195 South "C" Street 200  
 Tustin, California 92780  
 714 832-1834  
 FAX 832-1910



Hourian Associates  
 Landscape Architecture  
 127 AVENIDA MIRAMAR, SUITE D  
 SAN CLEMENTE, CA 92672  
 TEL 949-454-5622  
 FAX 949-454-5652  
 CA Lic. 508  
 ME Lic. 185

STORE  
 Name  
 E. COLORADO BLVD.  
 FSU

1700 E. COLORADO BL.  
 PASADENA, CA

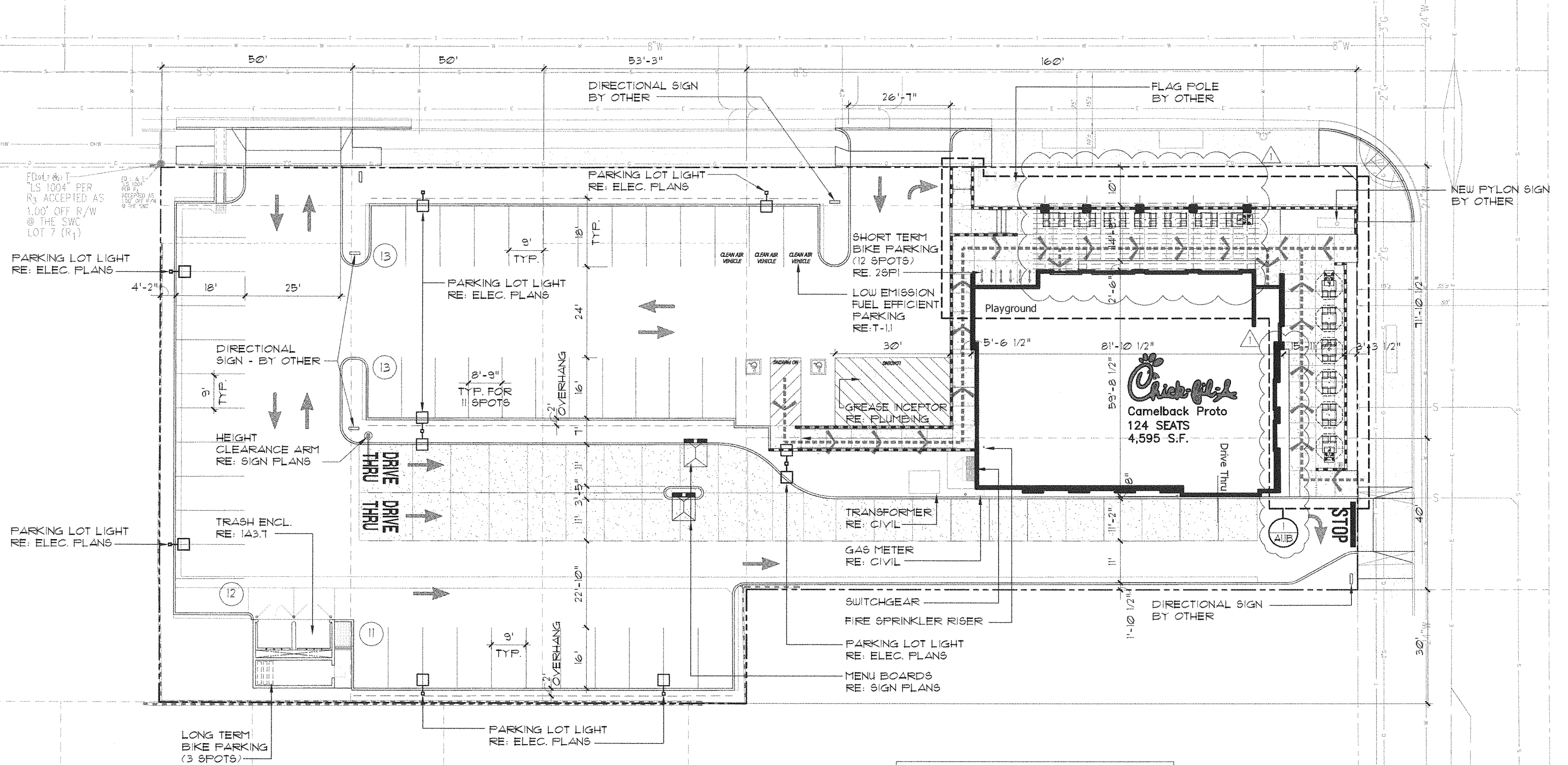
SHEET TITLE  
**LANDSCAPE  
 PLANTING PLAN**

VERSION: 7  
 ISSUE DATE: 10-2011

Job No.	13-134
Store	3349
Date	03-18-13
Drawn By	KLM
Checked By	JGH

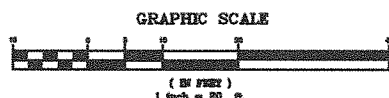
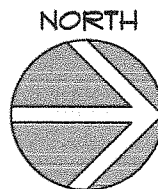
Sheet  
**L-4**

# BONNIE AVENUE



## I SITE PLAN

1" = 20'-0"



MCUP 6084

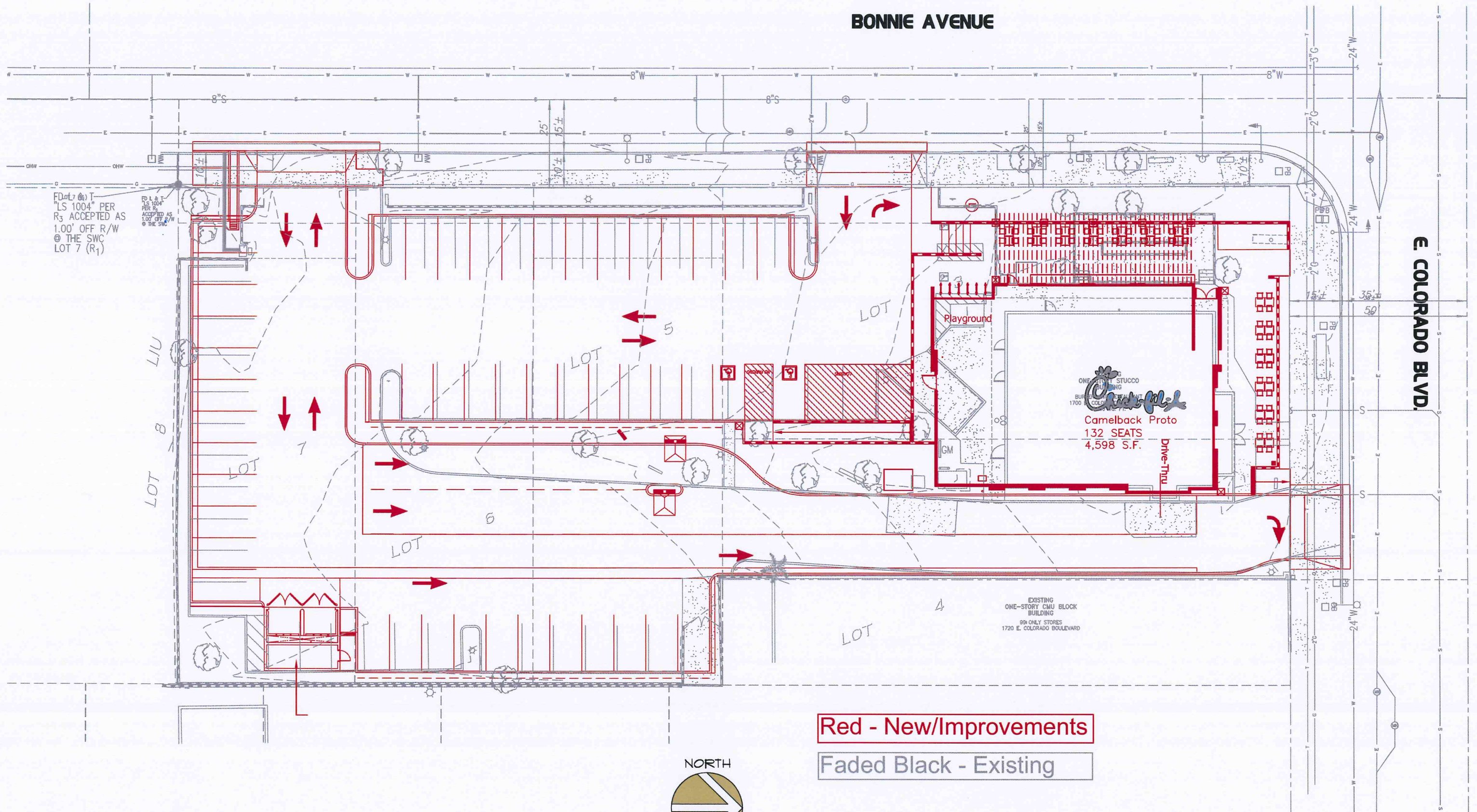
**LEGEND:**

- CONCRETE PAVING
- PEDESTRIAN ACCESS
- NEW PARKING LOT LIGHT FIXTURE -SEE ELECTRICAL PLANS



BONNIE AVENUE

E. COLORADO BLVD.

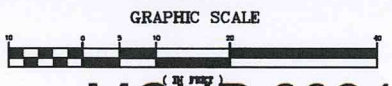


FDot 7 (b) T  
 "LS 1004" PER  
 R<sub>3</sub> ACCEPTED AS  
 1.00' OFF R/W  
 © THE SWC  
 LOT 7 (R<sub>1</sub>)

EXISTING  
 ONE-STORY CMU BLOCK  
 BUILDING  
 99A ONLY STORES  
 1720 E. COLORADO BOULEVARD

Red - New/Improvements

Faded Black - Existing

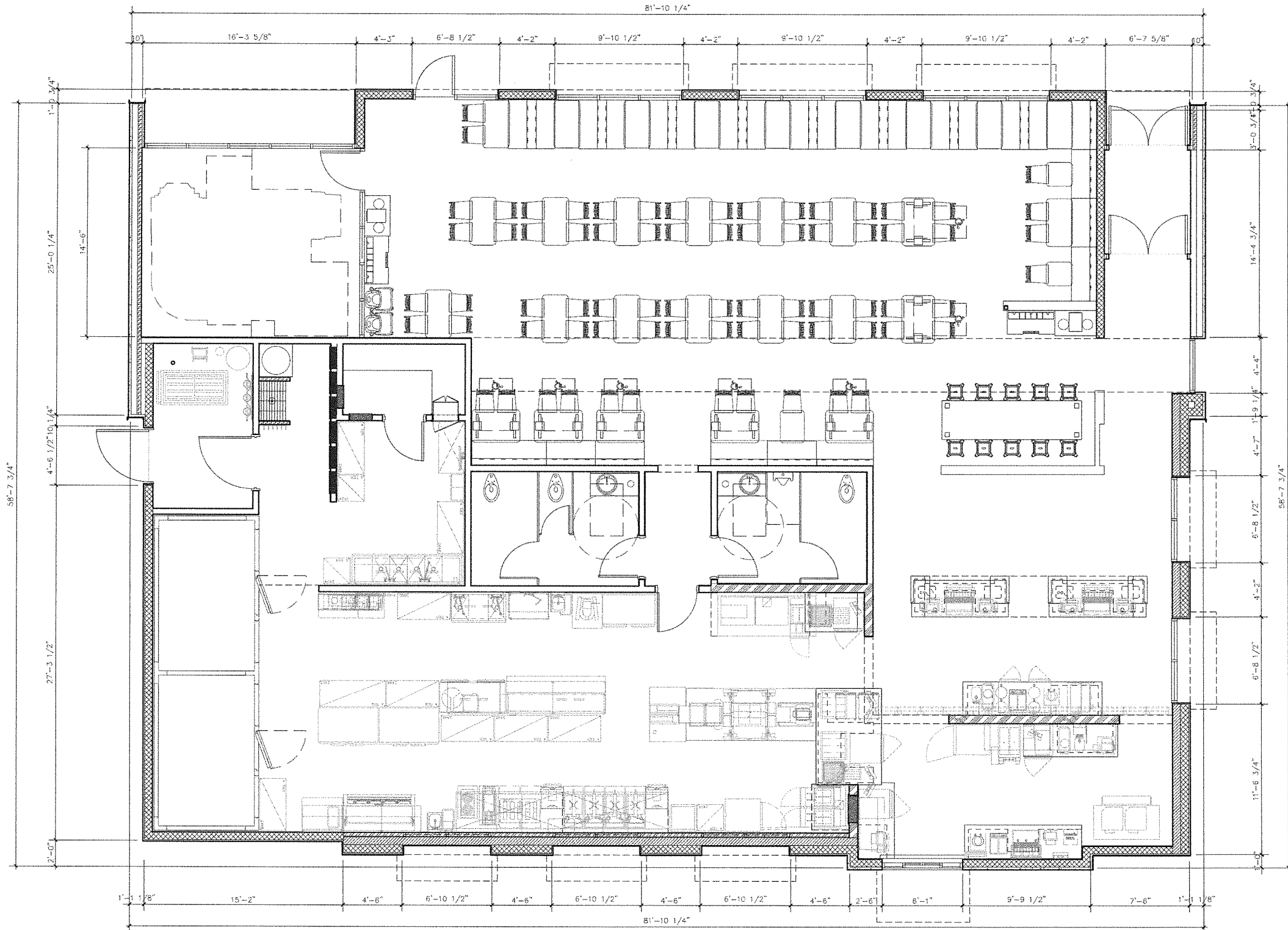


MCUP 6084

**I** **SITE PLAN**  
 1" = 20'-0"

**49 PARKING TOTAL**  
**PARCEL AREA 39,513 S.F.**





**I FLOOR PLAN**

1/4" = 1'-0"

4598 SQFT 132 SEATS



Design, location, and size of the proposed vs. existing building ; compatibility with existing uses in the vicinity

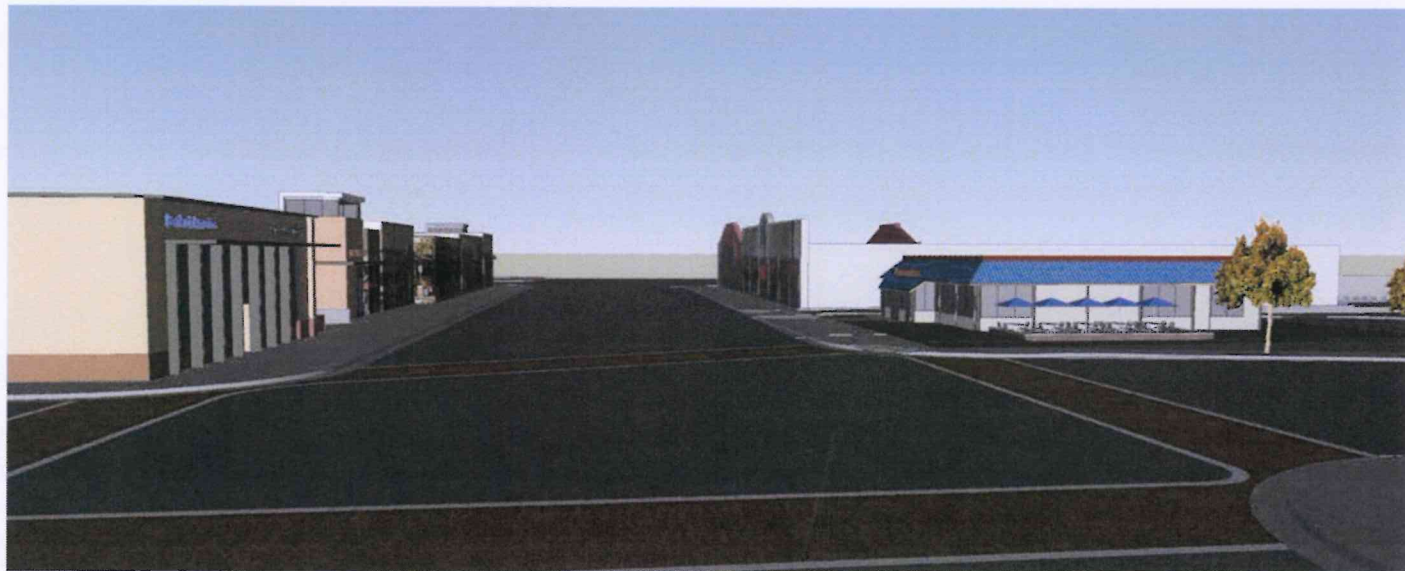
Street Level View

Bird's Eye View

PROPOSED



EXISTING





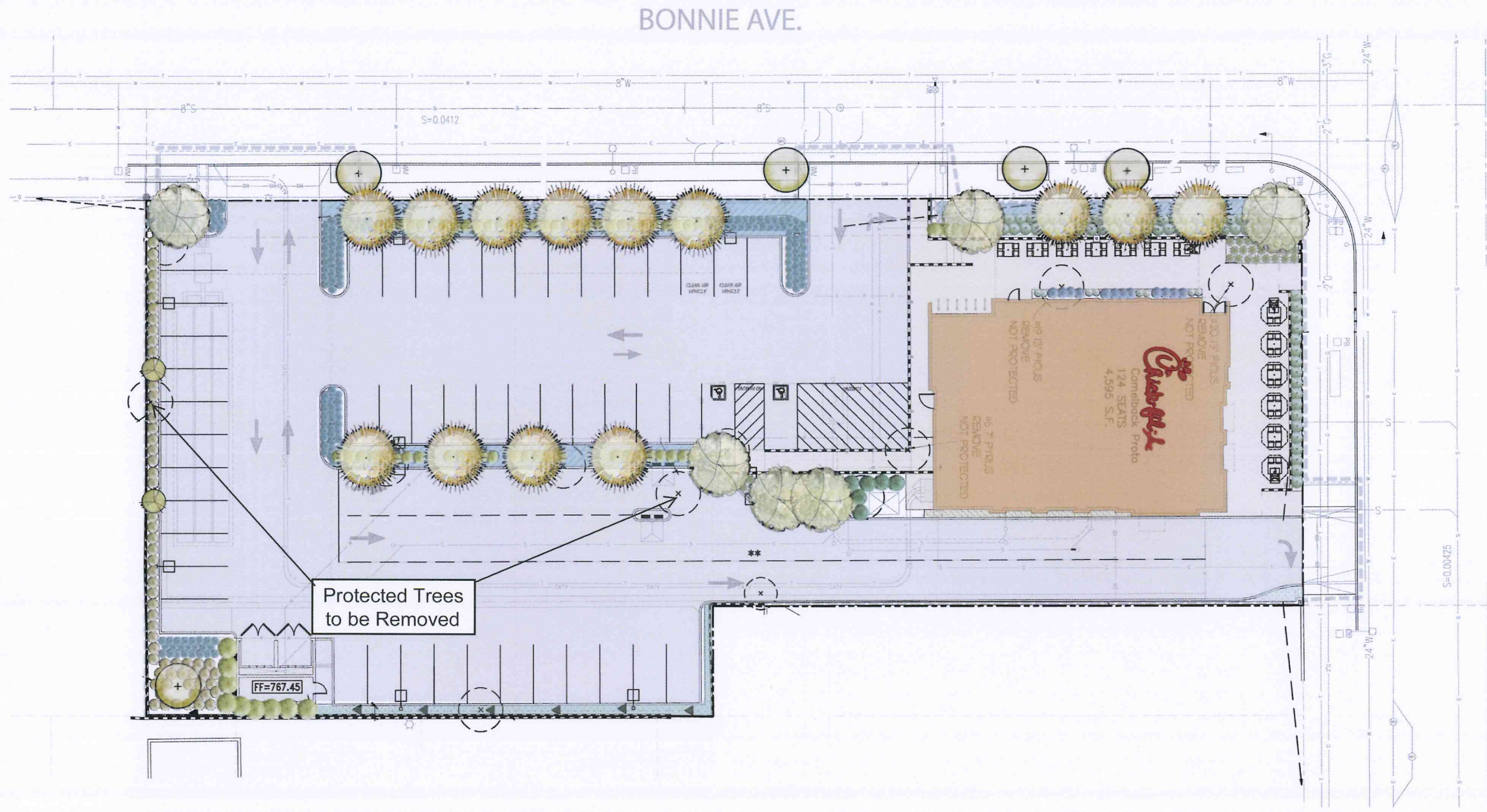


EXISTING



PROPOSED

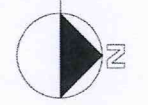
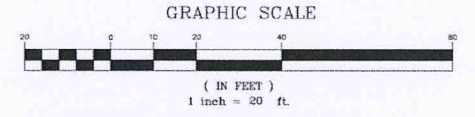




BONNIE AVE.

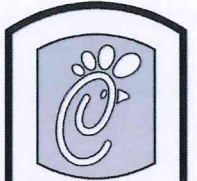
COLORADO BLVD.

Protected Trees to be Removed



**I** LANDSCAPE PLANTING PLAN  
1" = 20'-0"

MCUP 6084



**Chick-fil-A**  
5200 Buffington Rd.  
Atlanta Georgia,  
30349-2998

Revisions:

Mark	Date	By
△		
△		
△		



**C · R · H · O**  
Architecture Interior Planning  
195 South "C" Street 209  
Tustin, California 92780  
714 832-1834  
FAX 832-1910

**Hourian Associates**  
Landscape Architecture  
121 AVENIDA MIRAMAR, SUITE D  
SAN GILBERTO, CA 92572  
TEL 949-464-9622 FAX 949-464-9632  
CELL 949-464-1885

STORE Name  
E. COLORADO BLVD.  
FSU

1700 E. COLORADO BL.  
PASADENA, CA

SHEET TITLE  
**LANDSCAPE PLANTING PLAN**

VERSION: 7  
ISSUE DATE: 10-2011

Job No. : 13-134  
Store : 3349  
Date : 03-18-13  
Drawn By : KLM  
Checked By: JGH

Sheet  
**L-4**