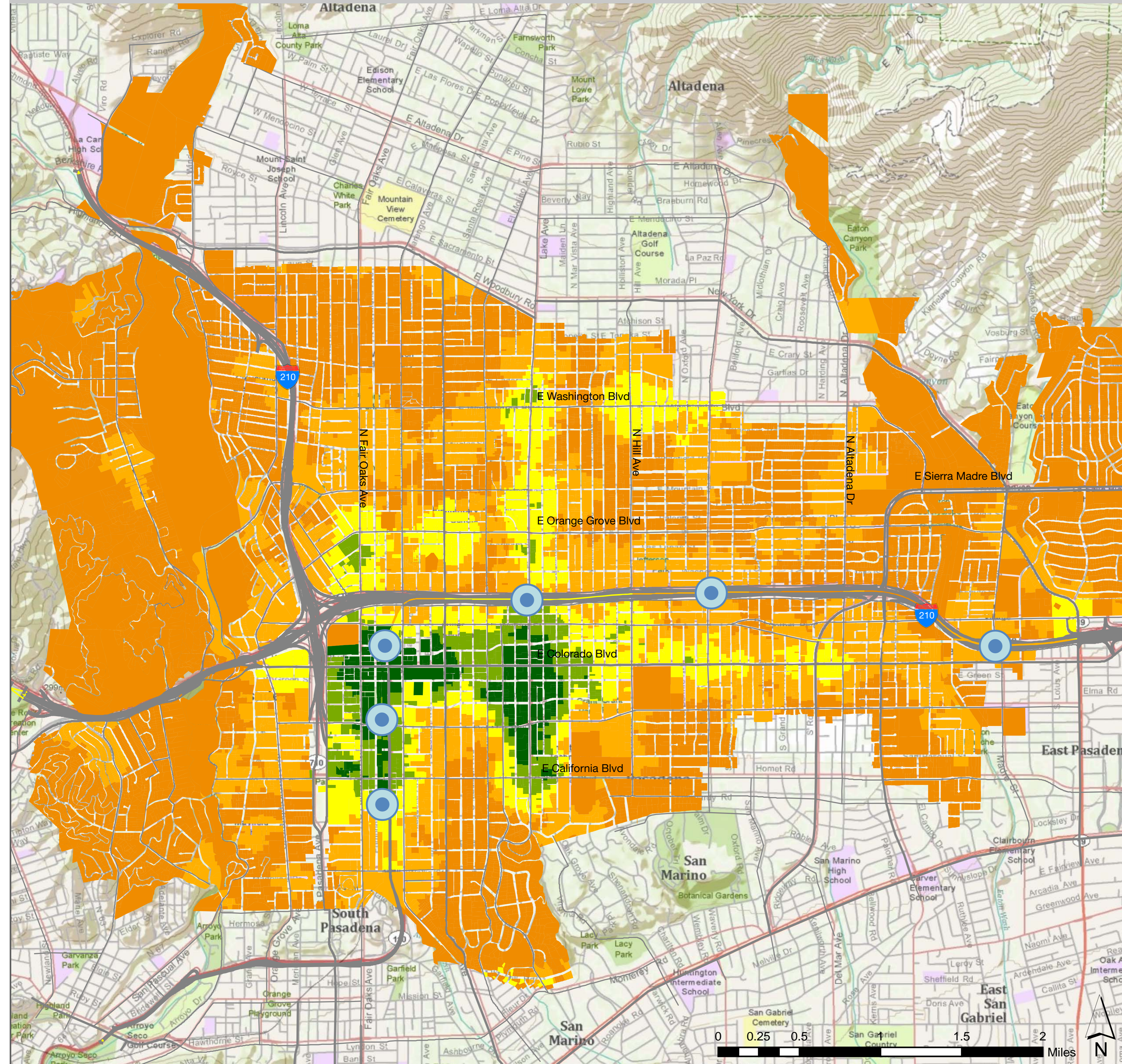


PacScore: 1/4 Mile Walk to Play/Shop/Learn



What's "PacScore"?

A made-for-Pasadena measure of 1/4 mile walking destinations from every part of the City, Pacscore shows the number and choice of places to play, shop and learn.

PacScore includes grocery stores, restaurants, parks, schools, shopping, coffee shops, bookshops, banks and entertainment venues.

PacScore

100

Very High

All or most destination types are within a quarter-mile walk from all parcels with very high PacScore.

80

High

Many destination types are within a quarter-mile walk from all parcels with high PacScore.

57

Medium

A variety of destination-types are within a quarter-mile walk from all parcels with medium PacScore.

31

Low

A few destination types are within a quarter-mile walk from all parcels with low PacScore.

6

Very Low

One or no destination type is within a quarter-mile walk from all parcels with very low PacScore.

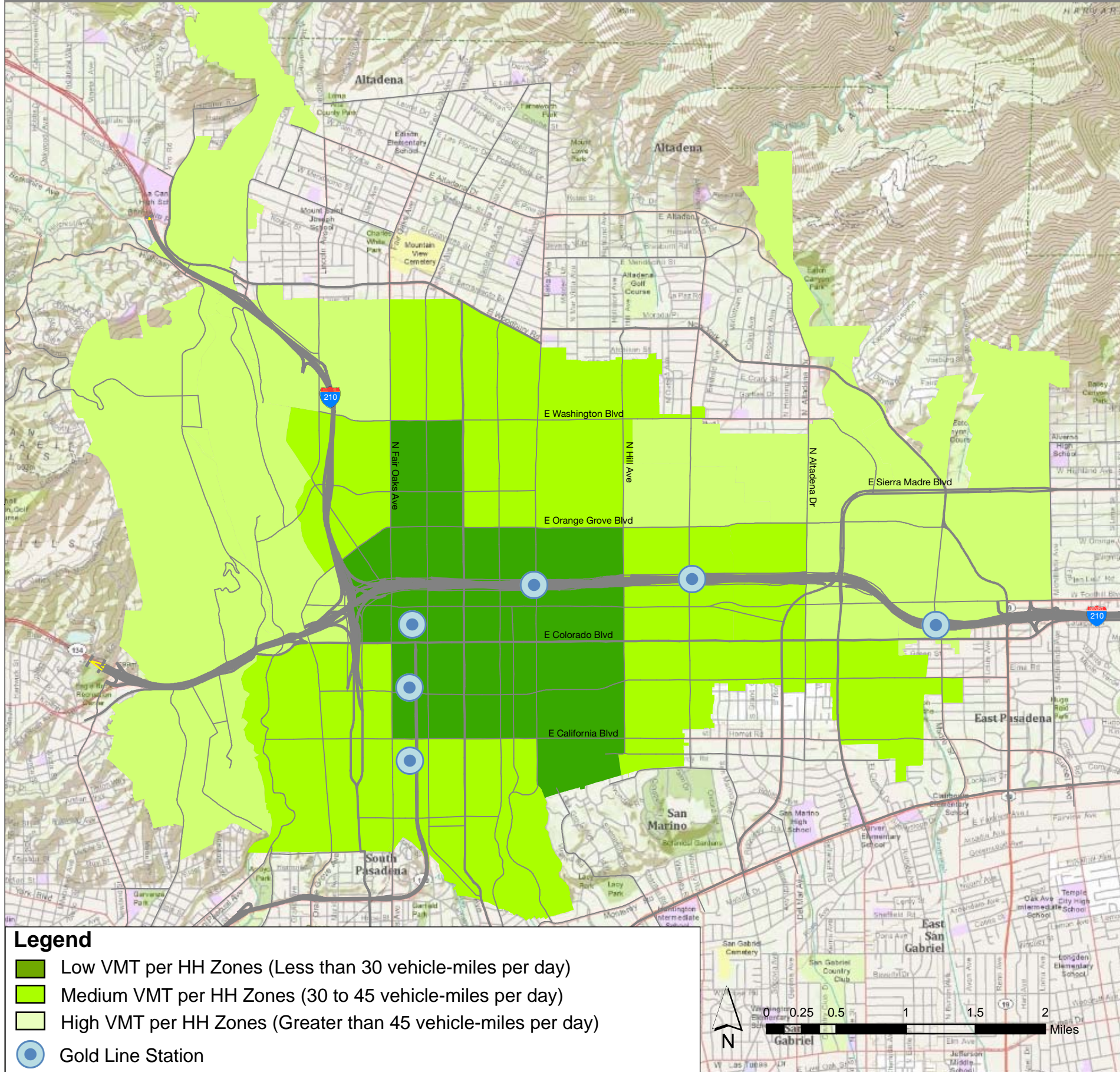
Gold Line Station



June 2011

Sources: Google Earth Pro, Los Angeles County GIS Portal, WalkScore.com

Estimated Vehicle-Miles Traveled by Census Tract

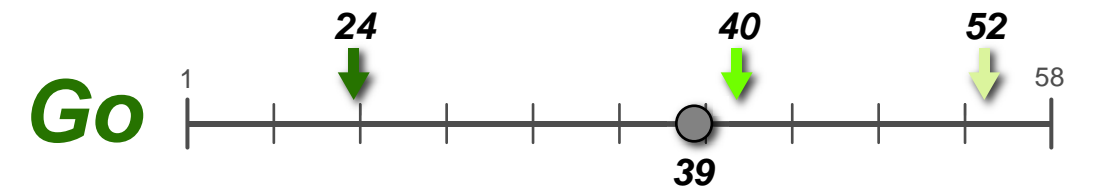


Pasadena Households On the Go

What is VMT per Household (VMT / HH)?

- The total miles travelled by all vehicles operated by a household on a typical day.
- Estimated as an average for households living in Pasadena “zones” (Census Tracts).

What does VMT / HH look like in Pasadena?



Estimated VMT / HH in Pasadena zones

- ↓ Low VMT per HH (Less than 30 vehicle-miles per day)
- ↓ Medium VMT per HH (30 to 45 vehicle-miles per day)
- ↓ High VMT per HH (Greater than 45 vehicle-miles per day)
- Estimated Pasadena Average

Why does VMT matter?

- Lower VMT / HH indicates less vehicle travel which results in...
 - **Less congestion**
 - **Less air pollution**
 - **Fewer greenhouse gas (GHG) emissions**

Sources: National Household Travel Survey, 2001
 US Census 2000
 City of Pasadena Parcel Database 2010

November 10, 2010

