

Attachment B - Artwork and Concept Alternates

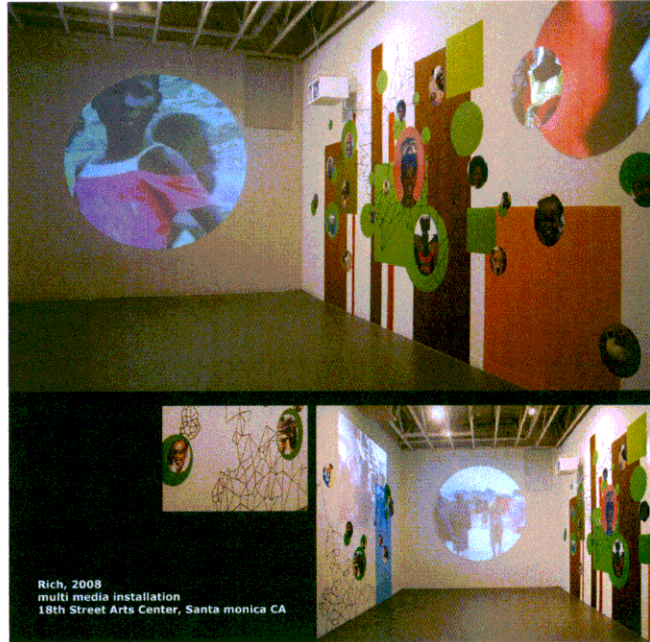
Alternate Artwork Washington and Glen,
Council District 1

Artist: Beth Nybeck
Title: *Stride*



Alternate Concept 1985 E. Walnut at Foothill,
Council District 2

Artist: Kyungmi Shin



Rich, 2008
multi media installation
18th Street Arts Center, Santa monica CA



Orange Tree
To be installed 2012
Omnitrans Transit System
San Bernardino, CA

Alternate Artwork Sunset and Mountain,
Council District 3

Artist: J. Seward Johnson
Title: *Monet Our Visiting Artist*



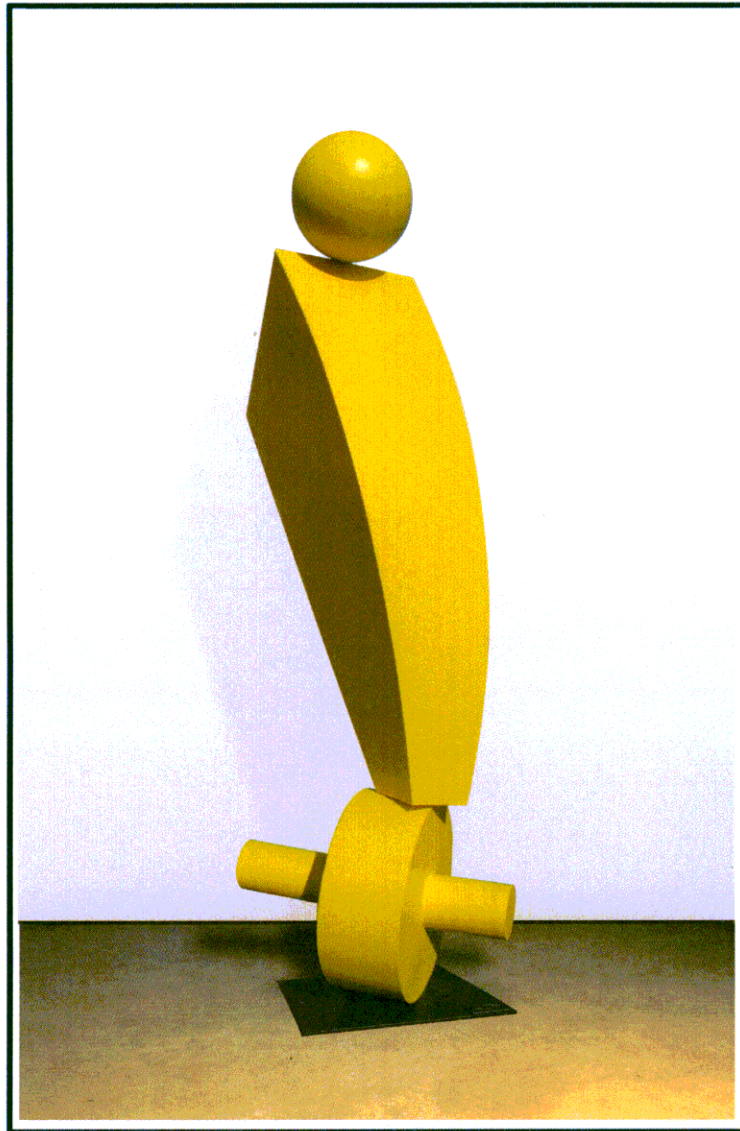
Alternate Artwork Sierra Madre Blvd. between Riviera and New York,
Council District 4

Artist: Cecelia Lueza
Title: *Ascending II*



Alternate Artwork 103 N. Catalina at Union,
Council District 5

Artist: Jon Seeman
Title: *On Spinning Axis*



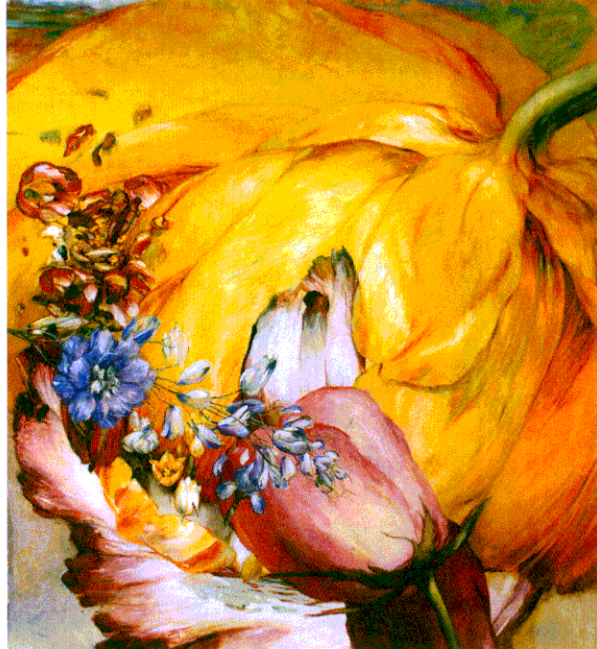
Alternate Concept 1199 S. Fair Oaks,
Council District 6

Artist: Leilani Yosick



Alternate Concept Bonnie Ave. Parkway at Del Mar,
Council District 7

Artists: Margaret Lazzari and Lauren Evans



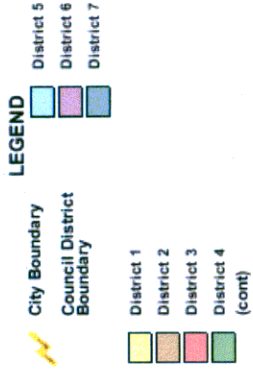
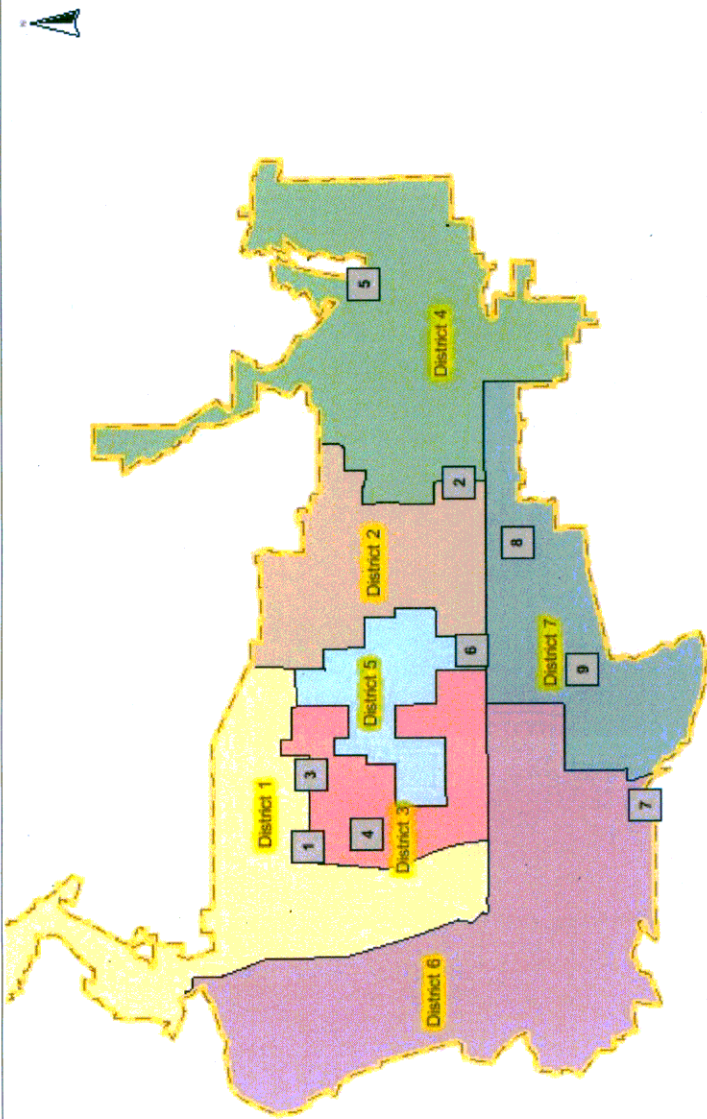
Alternate Artwork S. Lake Ave. at Lakewood Pl.,
Council District 7

Artist: Jon Seeman
Title: *Ascending Cube*



Attachment C – Map of Program Sites

Rotating Public Art Exhibition Program Phase I



- 1 Washington Blvd/Glen Ave Median
- 2 1985 E Walnut
- 3 200 E Washington Blvd
- 4 NW corner Sunset Ave/Mountain St
- 5 Sierra Madre Blvd East of New York Dr

- 6 103 N Catalina Ave
- 7 1199 S Fair Oaks Ave
- 8 SW Corner S Bonnie Ave/Del Mar Blvd
- 9 S Lake Ave/Lakewood Pl Median

Map Printed On 11/9/2010



Projection: State Plane California Zone V, FIPS 405 (Feet) Datum: NAD 1983 Source: City of Pasadena

Disclaimer The maps and associated data are provided without warranty of any kind. Any resale of this information is prohibited. Copyright 2008, City of Pasadena.

