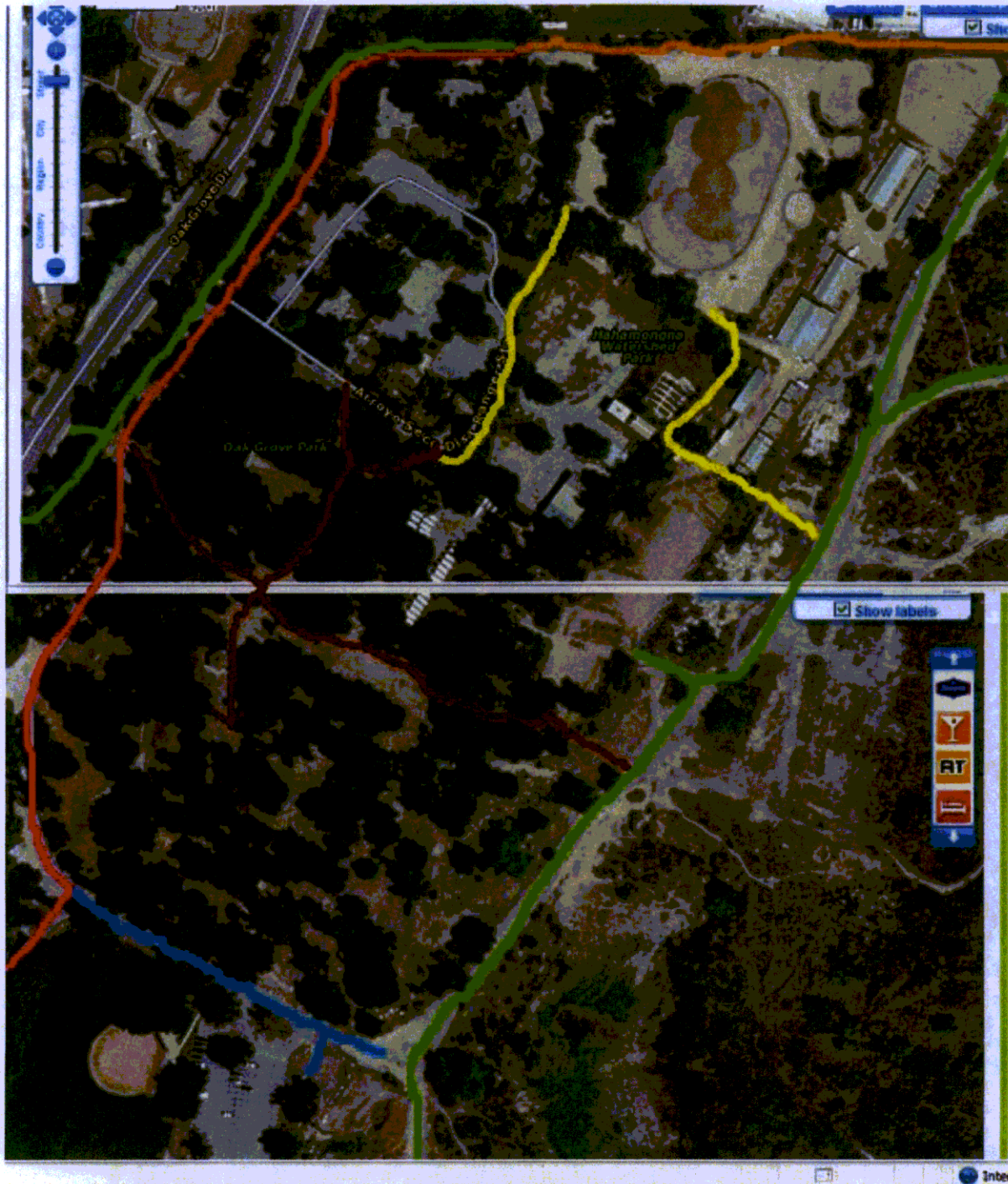


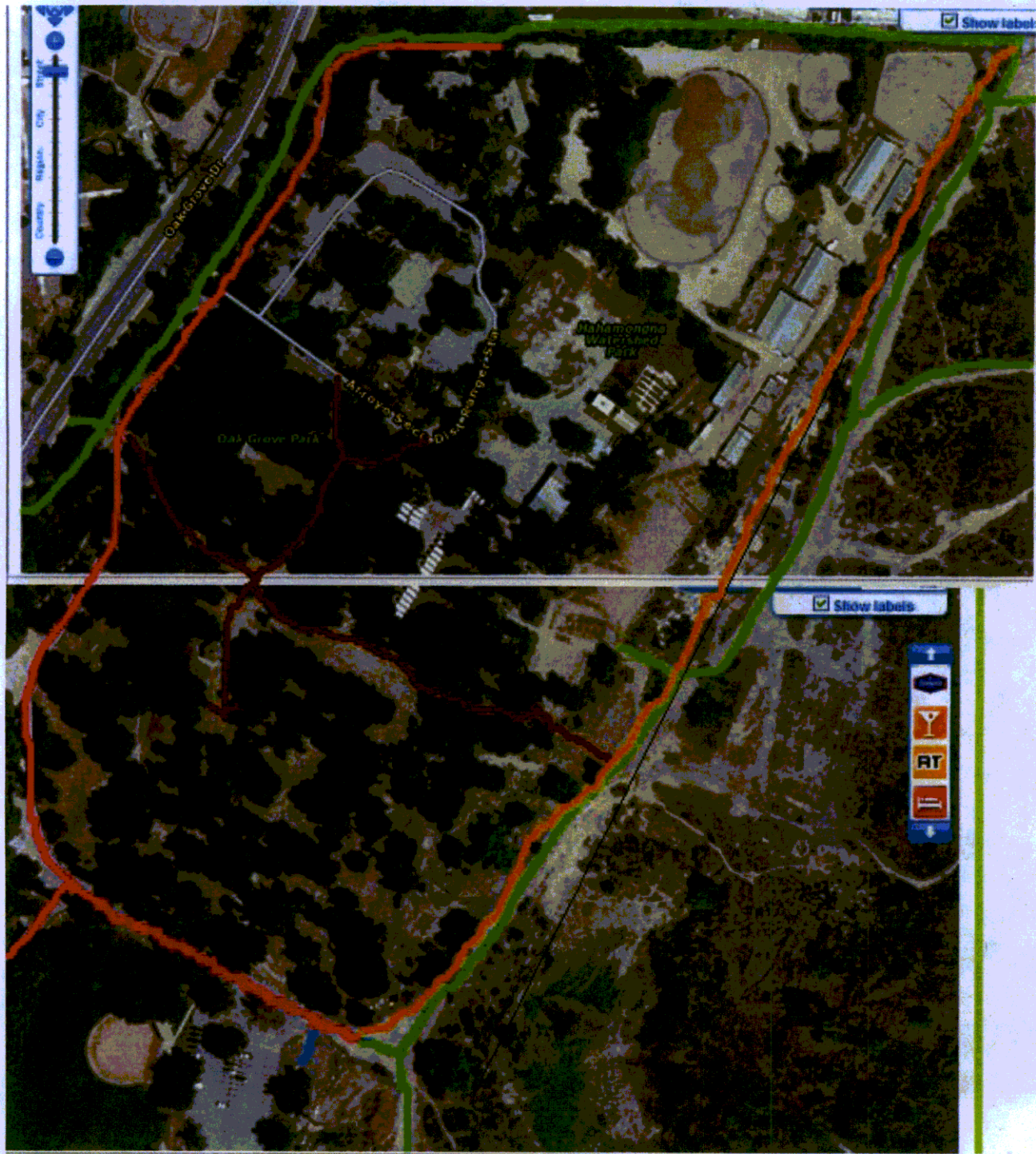
Figure F8 FOH Trail Solutions 1 and 2 Combined as Approved by the Design Commission 9/15/09



**Legend:**

- Green = Existing Equestrian Trails**
- Pink = Park Road and Bikeway**
- Red = Staff Proposed Trails**
- Light Blue = Road To Parking**
- Yellow = Proposed Equestrian and Hiking Trails**
- Orange = Proposed Biking and Hiking Trail**

Figure F9 FOH Trail Solution 3 (Original Alternative) 9/13/09



**Legend:**

**Road to Parking, Park Road & Bike Route, Equestrian / Hiking Trail, Staff Proposed Trails, FOH Proposed Equestrian / Hiking Connector Trail, Proposed Bikeway (Orange)**