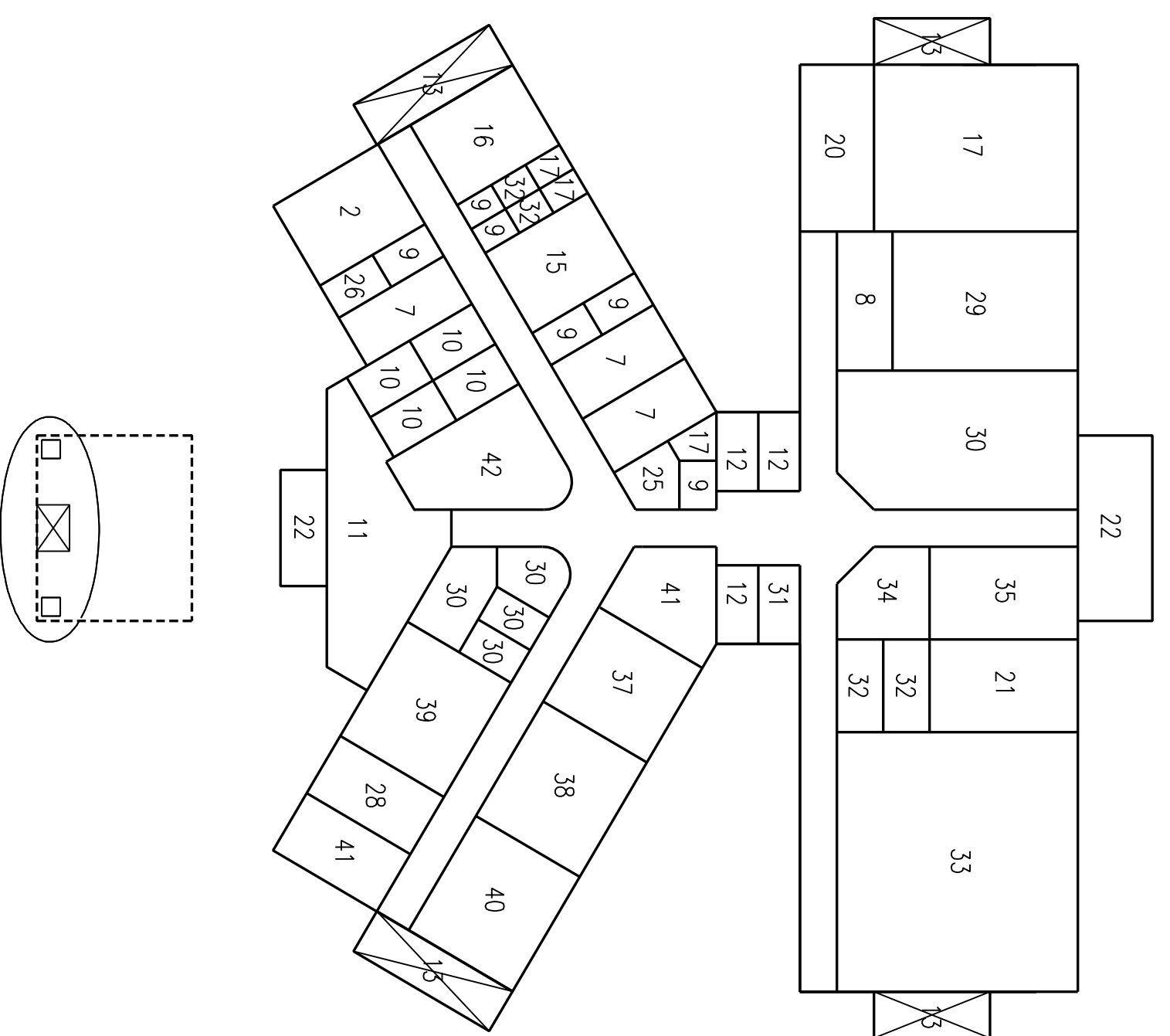
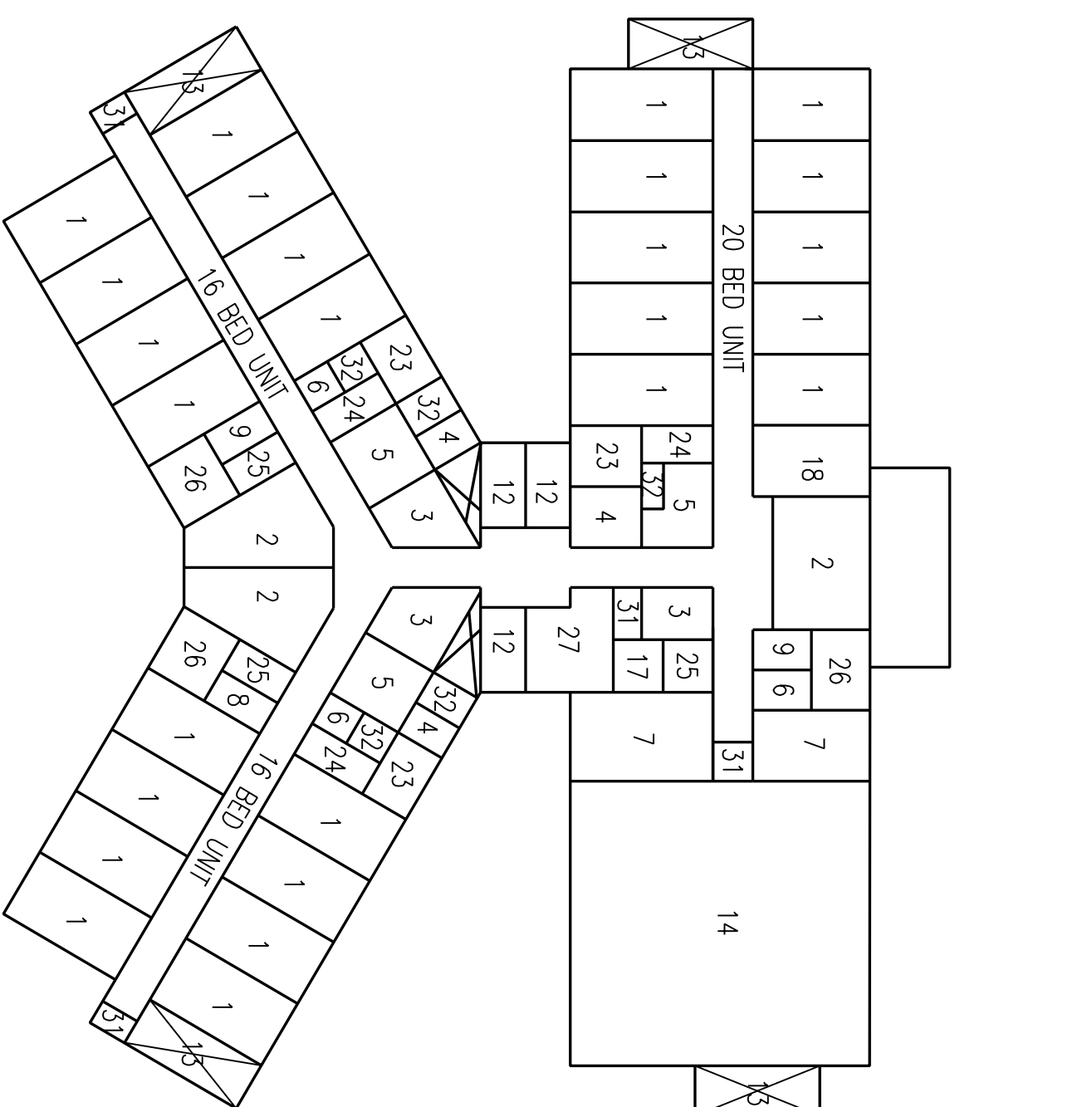


# Las Encinas Hospital

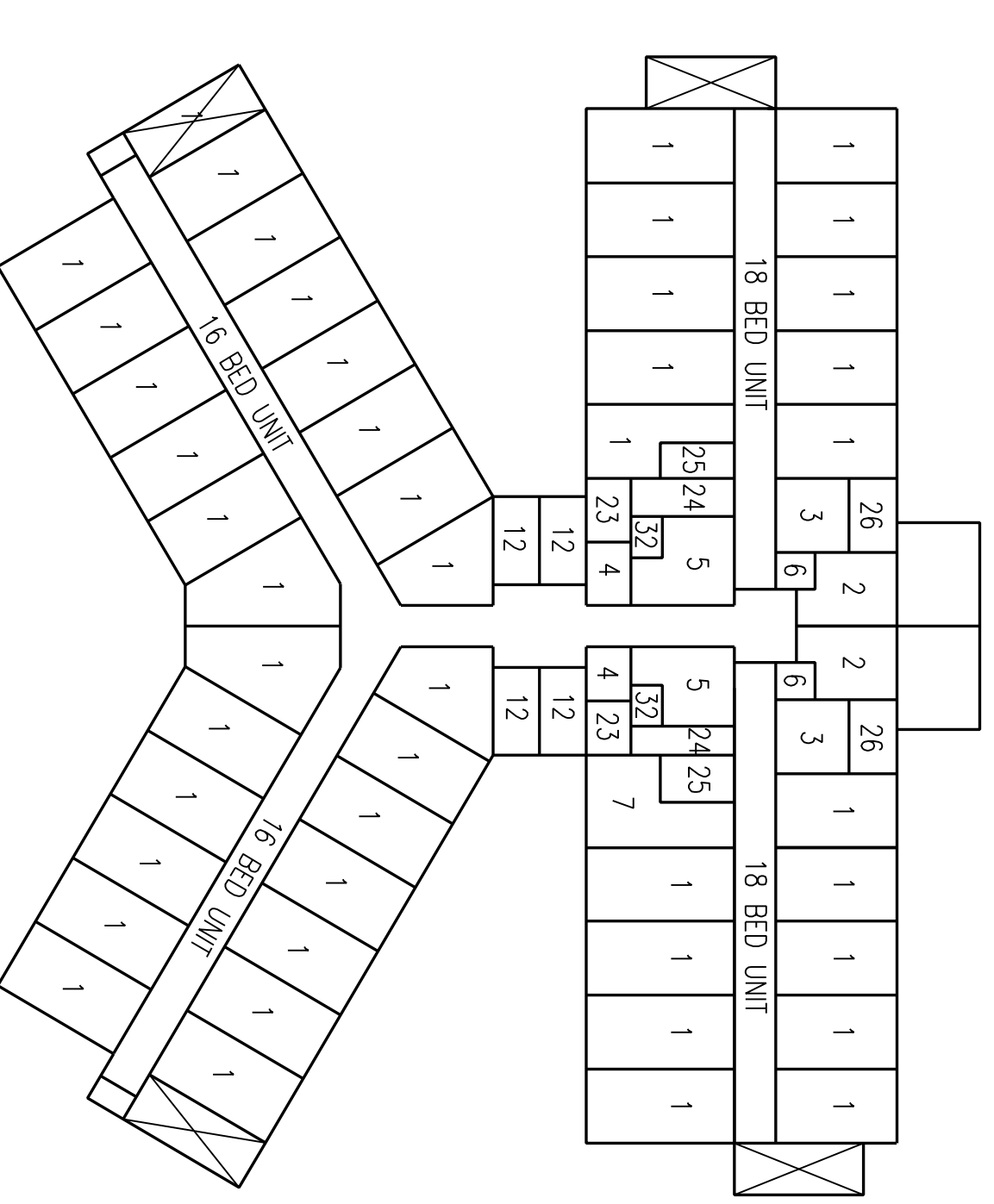
## Master Development Plan Amendment



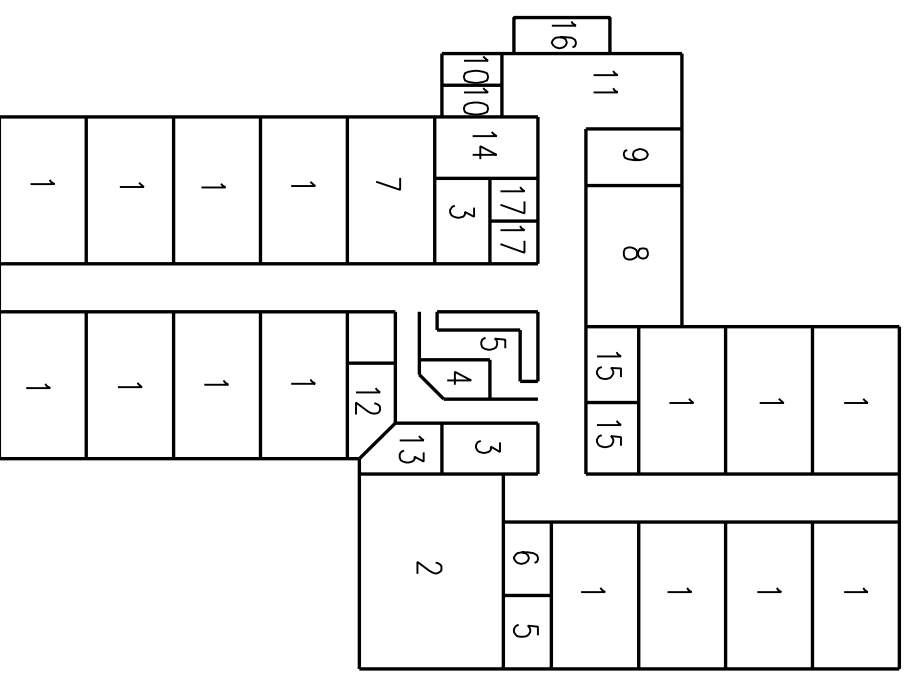
PSYCHIATRIC HOSPITAL FIRST FLOOR PLAN  
1/4" = 1'-0"



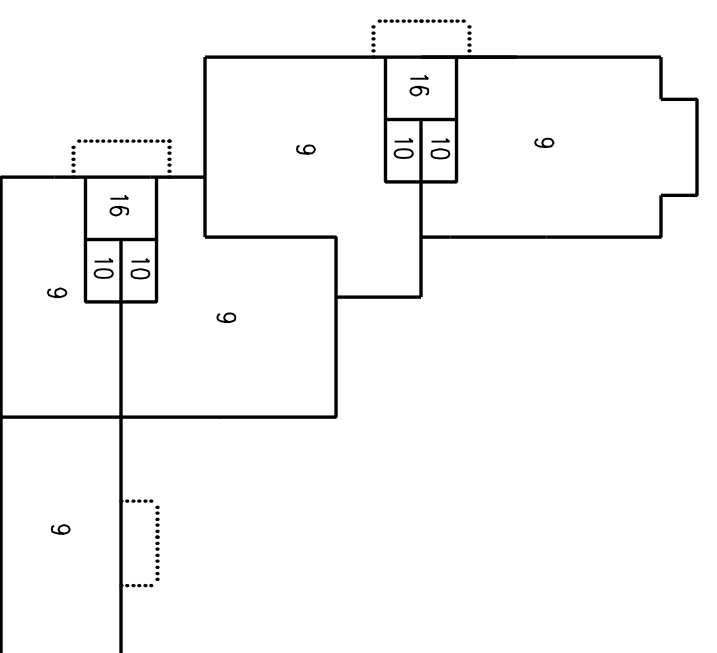
PSYCHIATRIC HOSPITAL SECOND FLOOR PLAN  
1/4" = 1'-0"



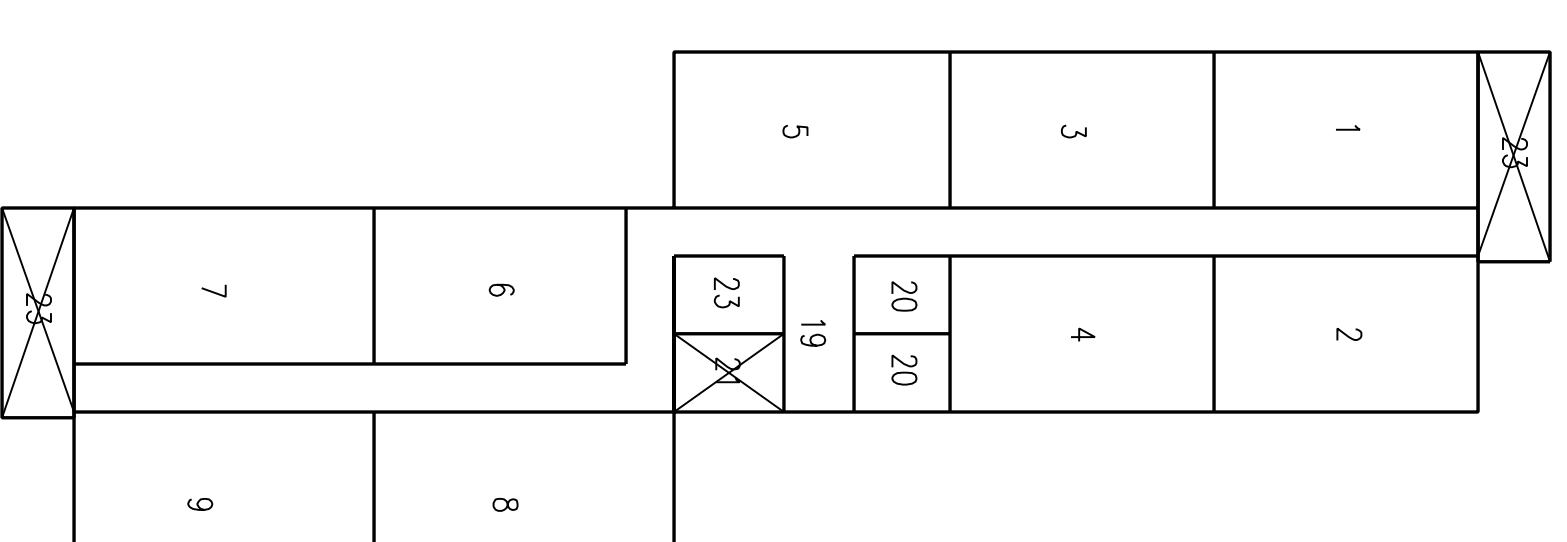
PSYCHIATRIC HOSPITAL THIRD FLOOR PLAN  
1/4" = 1'-0"



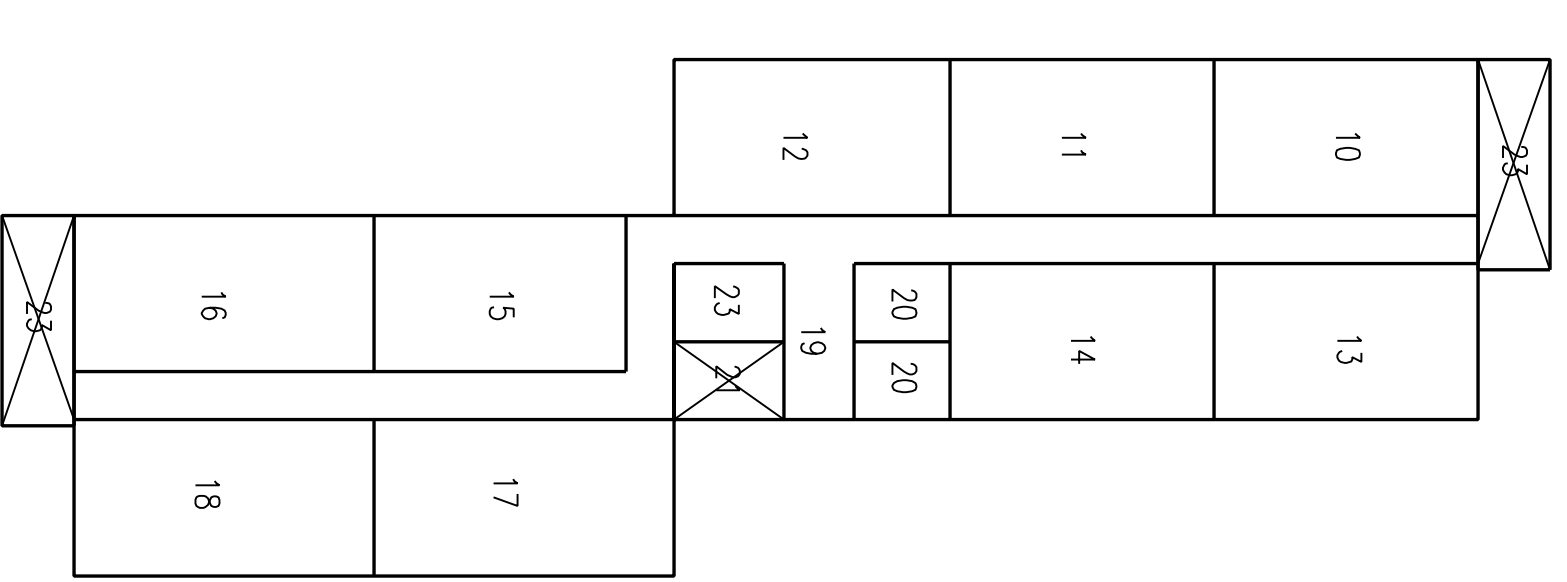
28 BED PSYCHIATRIC UNIT FIRST FLOOR PLAN  
1/4" = 1'-0"



MEDICAL OFFICE FIRST FLOOR PLAN  
1/4" = 1'-0"

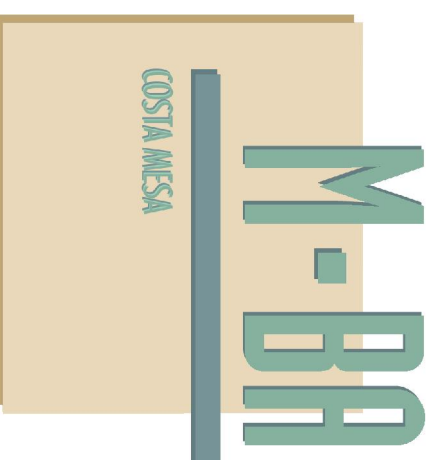
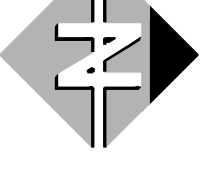


MEDICAL OFFICE FIRST FLOOR PLAN  
1/4" = 1'-0"



MEDICAL OFFICE SECOND FLOOR PLAN  
1/4" = 1'-0"

1 PROPOSED CONCEPTUAL BUILDING PLANS  
1/32" = 1'-0"



**MORSE - BOURDREUX ARCHITECTS**  
1901A Newport Boulevard  
Costa Mesa, CA 92627  
Tel: 714.251.5671  
Fax: 714.251.5673

DATE: 10/30/08  
PROJECT NUMBER: 32-07  
SHEET NO.: 14 OF 22  
PROJECT ADDRESS: LAS ENCINAS HOSPITAL, 2900 EAST DEL MAR BLVD., PASADENA, CA 91107