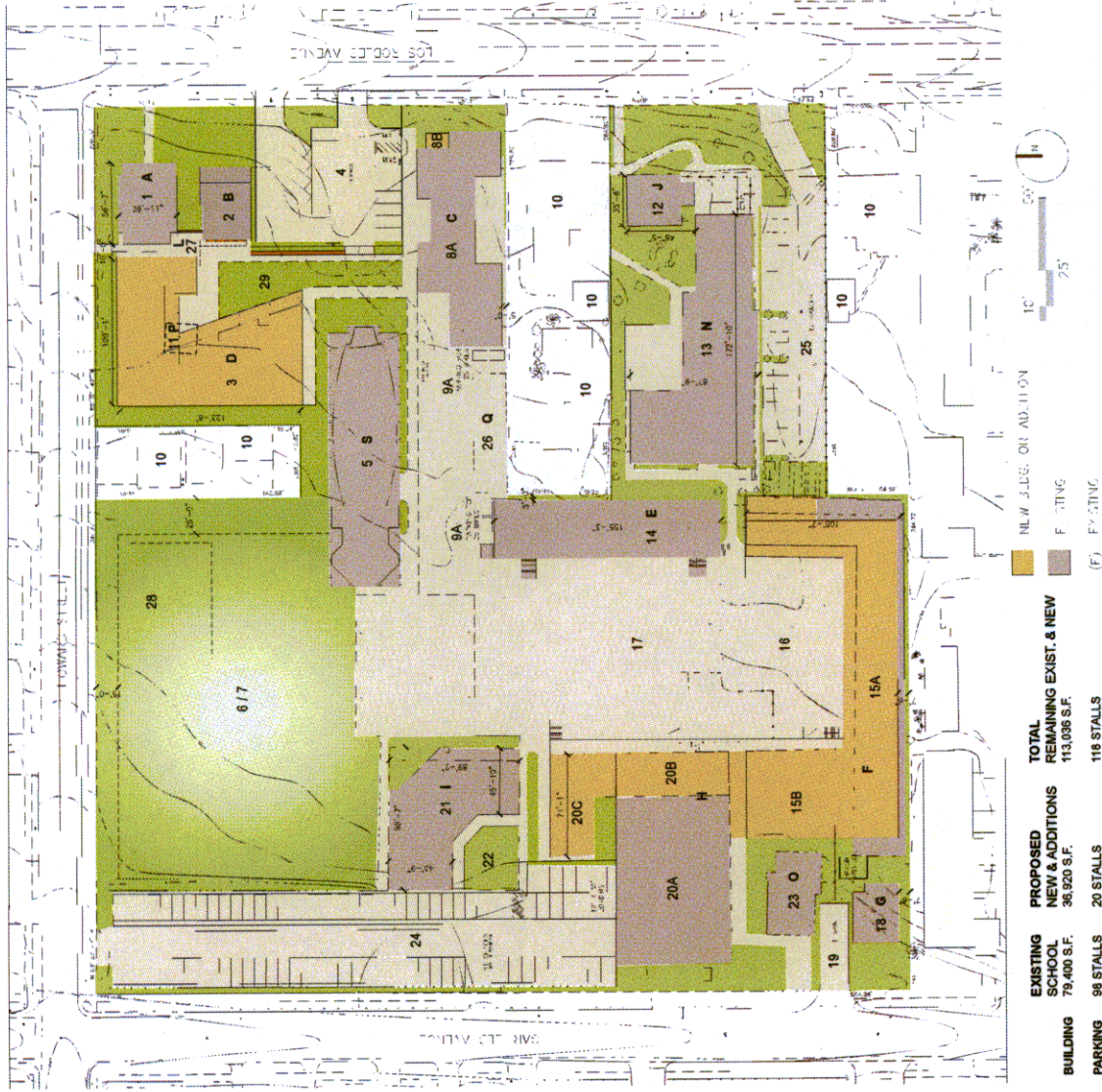


**Attachment 1**

**LEGEND**

1. (E) BLDG. 3,130 S.F. BLDG. A
2. (E) 2-STORY BLDG. 2,164 S.F. / BLDG. B AND PORTE COCHERE TO BE MODIFIED. FRONT ELEVATION TO REMAIN UNCHANGED. 711 S.F. TO BE DEMOLISHED.
3. PROPOSED SINGLE-STORY JR. HIGH SCHOOL 8,250 S.F. / BLDG. D
4. (E) PARKING LOT 19 SPACES RECONFIGURED.
5. (E) LIBRARY/SCIENCE 1-STORY 6,600 S.F. / BLDG. S
6. (E) OUTDOOR PLAY AREA. 45,450 S.F.
7. (E) FIELD
- 8A. (E) 2-STORY JR. HIGH-ADMIN. BLDG. TO BE REMODELED 9,472 S.F. / BLDG. C.
- 8B. PROPOSED 2-STORY ADDITION TO BLDG. C. / 410 S.F.
- 9A. PARKING FOR 25 BICYCLES.
10. (E) RESIDENTIAL PROPERTY. NOT A PART OF SCHOOL.
11. (E) 1-STORY 408 S.F. SHED TO BE DEMOLISHED. BLDG. P
12. (E) 2-STORY RESIDENCE TO REMAIN. 2,944 S.F. / BLDG. J
13. (E) 1-STORY PRESCHOOL FACILITY TO REMAIN. 9,802 S.F. / BLDG. N
14. (E) 2-STORY ELEM. CLASSROOM BLDG. TO REMAIN 10,026 S.F. / BLDG. E
- 15A. (E) 1-STORY 10,869 S.F. ELEM. CLASSROOM BLDG. WITH PROPOSED 2ND FLOOR ADDITION. 11,800 S.F. TOTAL 22,669 S.F. / BLDG. F
- 15B. PROPOSED 2-STORY ADDITION TO ELEM. CLASSROOM 8,200 S.F. / BLDG. F
16. (E) OUTDOOR PLAY AREA. 11,330
17. (E) OUTDOOR PLAY AREA. 39,460
18. (E) 1-STORY RESIDENCE TO REMAIN. 1,243 S.F. / BLDG. G.
19. PROPOSED BUS PARKING 1 SPACE (55'-0" x 19'-6")
- 20A. (E) 2-STORY 12,925 S.F. MULTIPURPOSE BLDG. REMODELED TO REGULATION JR. HIGH SIZE BASKETBALL COURT. BLDG. H
- 20B. PROPOSED 2ND STORY ADDITION OVER (E) BLDG. H. / 3,060 S.F.
- 20C. PROPOSED 2-STORY CLASSROOMS 5,200 S.F. / BLDG. H.
21. (E) 1-STORY KINDERGARTEN, 1ST GRADE CLASSROOMS, 5,953 S.F. / BLDG. I
22. (E) OUTDOOR PLAY AREA. 1,552 S.F.
23. (E) 1-STORY RESIDENCE TO BE REMODELED. BLDG. O. / 1,903 S.F.
24. (E) STAFF PARKING 81 SPACES.
25. (E) PRESCHOOL PARKING 17 SPACES.
26. (E) LOCKER AREA TO BE MODIFIED. BLDG. Q. / 2,165 S.F.
27. NEW LOCKER AREA. L
28. EMERGENCY STUDENT REFUGE. 2,379 S.F. (793 STUDENTS @ 3 S.F./STUDENT)
29. (N) OUTDOOR PLAY AREA. 7,700 S.F.



<b>EXISTING SCHOOL</b>	<b>PROPOSED NEW &amp; ADDITIONS</b>	<b>TOTAL REMAINING EXIST. &amp; NEW</b>
79,400 S.F.	36,920 S.F.	113,096 S.F.
<b>BUILDING</b>	<b>PARKING</b>	
96 STALLS	20 STALLS	118 STALLS

**PASADENA CHRISTIAN SCHOOL - PROPOSED MASTER PLAN**

3rd February 2009