

MEMORANDUM

DATE: MAY 14, 2007

TO: MAYOR AND CITY COUNCIL AND CHAIR AND MEMBERS
BOARD OF EDUCATION

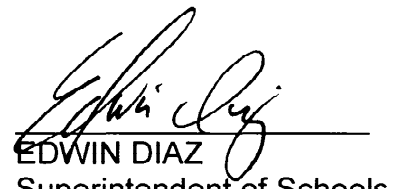
FROM: CITY MANAGER AND SUPERINTENDENT OF SCHOOLS

RE: JOINT USE SCHOOL/PARK SITE STUDY

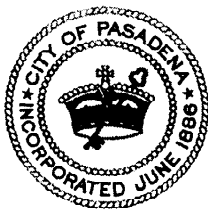
On May 2, 2007, the City of Pasadena Public Safety Committee and the Pasadena Unified School District Facilities and Capital Projects Subcommittee met jointly and considered the Joint Use School/Park Site Study report prepared by staff. The committee adopted the recommendations of staff with the following additions:

- 1) City Council and PUSD Board of Education approve McKinley School and Hamilton Elementary School as the next sites to be developed into school/park facilities. These projects are to be completed within the next 12 months. *Approved but added the following request: Staff also proceed with the planning for Linda Vista Elementary and Marshall Fundamental School as soon as PUSD determines these sites are available for joint use.*
- 2) City Council and PUSD Board of Education approve the attached prioritized list of Joint School/Park Sites for future staff implementation. *Approved but added the following request: Staff to identify any blacktop space at these sites that can be converted into green space.*


CYNTHIA J. KURTZ
City Manager


EDWIN DIAZ
Superintendent of Schools

05/14/2007
Item H



Date: May 14, 2007

TO: MAYOR AND CITY COUNCIL
CHAIR AND MEMBERS BOARD OF EDUCATION

THROUGH: CITY PUBLIC SAFETY COMMITTEE AND FACILITIES AND CAPITAL
PROJECTS SUBCOMMITTEE

FROM: CITY MANAGER
SUPERINTENDENT OF SCHOOLS

SUBJECT: JOINT USE SCHOOL/PARK SITE STUDY

RECOMMENDATION

It is recommend that:

1. City Council and PUSD Board of Education approve McKinley School and Hamilton Elementary School as the next sites to be developed into school/park facilities. These projects will be completed within the next twelve months; and
2. City Council and PUSD Board of Education approve the attached prioritized list of Joint School/Park sites for future staff implementation.

BACKGROUND

The City Council wishes to add additional park and open space to the inventory of areas available to the public. The Governing Board of the Pasadena Unified School District recognizes that district facilities and grounds are a community resource and authorizes their use by community groups for purposes provided for in the Civic Center Act when such use does not interfere with school activities. Both organizations recognize this need and are working cooperatively to provide for facilities as opportunities present themselves. At the July 10, 2006, meeting of the Public Safety Committee and the Pasadena Unified School District (PUSD) Facilities and Capital Projects Subcommittee, staff was asked to review seven school sites to determine if they can be opened in the afternoon and on the weekends and used for park sites as an expansion of the Madison School/Park model. The initial sites to be reviewed were: Linda Vista Elementary, John Muir High School, Cleveland Elementary School, Longfellow Elementary School, McKinley School, and Hamilton Elementary School. The Committee and Subcommittee amended the list to add Washington Middle School for consideration.

On December 4, 2006, a meeting of the City Council's Public Safety Committee and the Facilities and Capital Projects Subcommittee of the PUSD Board was held. At that time the two bodies considered the Joint Use School/Park Site Study of the seven sites prepared by staff. On January 8, 2007, City Council asked staff to work with the School District to prepare an agreement for the use of McKinley School as a Joint Use School/Park Site and to prepare cost estimates for the implementation of improvements to meet school/park site criteria at each of the proposed joint-use school sites. The PUSD Board of Education has not formally adopted McKinley School as the next site and it is requested that both bodies approve this recommendation. The agreement for McKinley School is being prepared and will be brought to the Public Safety Committee and forwarded to the respective governing bodies in the near future for approval. Staff is recommending Hamilton School be added as a school/park site in FY 2008. Hamilton School has some parking issues to be resolved before moving ahead with this site, but the order of construction will have McKinley School first and Hamilton School second.

The improvements at the seven sites proposed for joint use as school/park sites are described in detail in Attachment 1. In each case the proposed joint-use area contains a playground, picnic facilities, trees and turf. Some sites also contain other features such as basketball courts and parking areas. The size of the turf areas varies and they are intended for casual rather than organized or permitted use.

City and PUSD staff evaluated Muir High School and determined that it would not be a good site for a neighborhood-type park at this time. Based on the need for further study of the uses on the Muir campus, a school/park facility at this campus will be considered at a later date. The City and School District have already agreed to the use of the Muir High School tennis courts as a joint-use facility. In addition, Cleveland Elementary School is one of the proposed joint-use sites that is located near Muir High School and will provide services to the area.

In order to keep seven sites for future consideration, staff has added Marshall Fundamental School as an additional site for school/park site construction. This site is located in the middle of an area that is not within a half mile of a park site and is underserved by our park system.

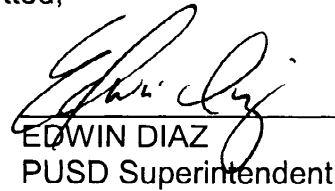
The Parks and Natural Resources Division of Public Works currently provides maintenance and security support for the joint-use site at Madison Elementary School. Taking into consideration the time and resources allocated for this support, staff is projecting that the annual expenses for the additional seven sites will be \$70,000. This estimate includes the weekend site cleanup, biweekly playground equipment inspections, maintenance and administration, miscellaneous parts, supplies and labor for repairs, and the contracted services for security lockup. This estimate does not include graffiti removal.

FISCAL IMPACT

The total cost of the proposed improvements to make these sites school/park facilities at the seven school sites is \$1,364,775. The City of Pasadena's recommended Capital Improvement Program Budget for FY 2008 includes \$224,000 for improvements at McKinley and Hamilton schools. The cost of increased maintenance and security for these two sites is estimated at \$20,000. This would also be a City of Pasadena cost and would be recommended as a part of the FY 2009 Operating Budget.

Respectfully submitted,


CYNTHIA J. KURTZ
City Manager


EDWIN DIAZ
PUSD Superintendent

Prepared and Approved By:


Martin Pastucha, Director
Department of Public Works

Attachments

PUSD JOINT USE PARK SITE ESTIMATE SUMMARY

5/2/2007

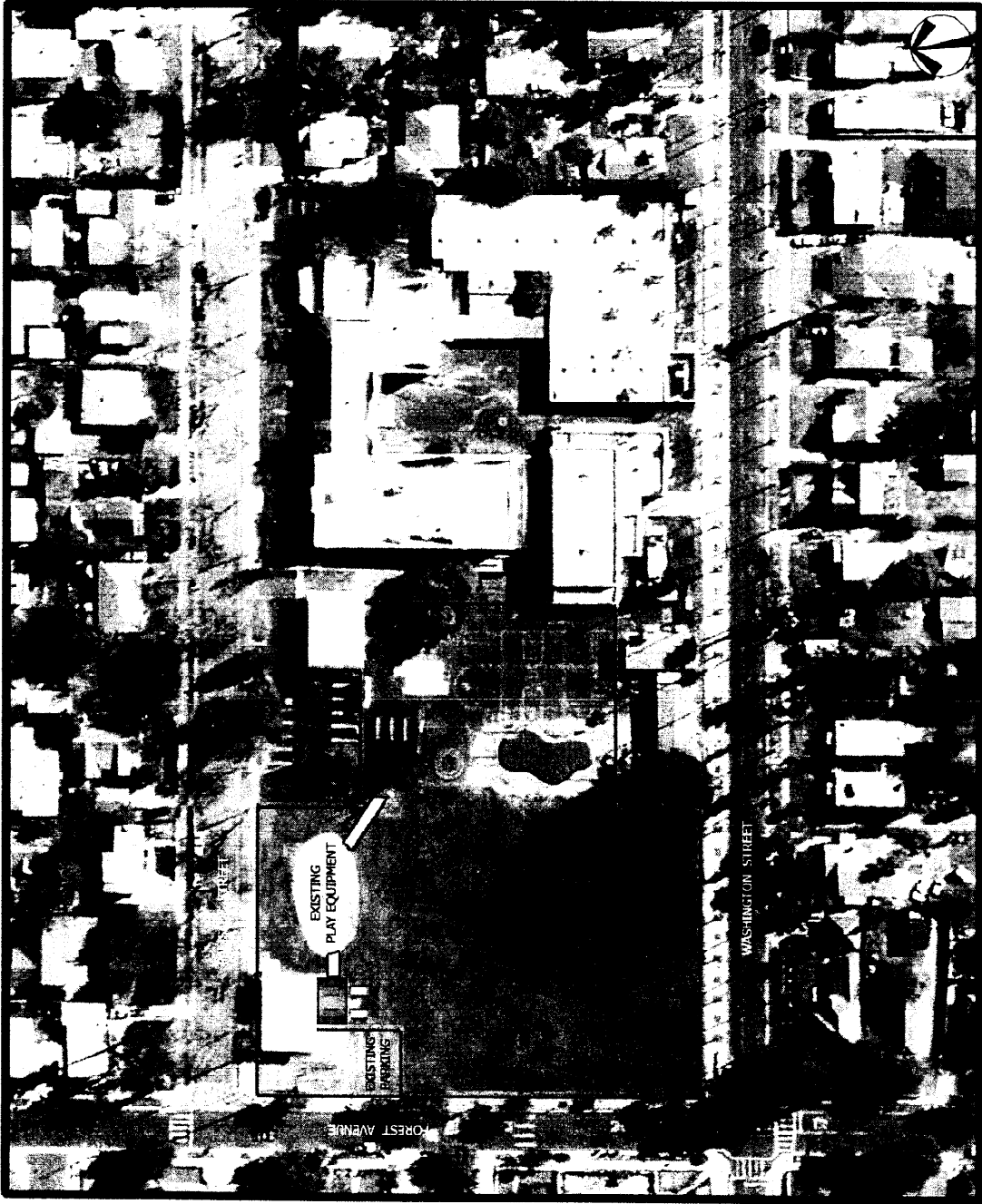
Priority	Site	RIF Zone	Distance From a Park	Preliminary Rough Estimate	Apr 07 Estimate
1	McKinley	Central	Over 1/2 mile	Less Than \$100,000	\$181,000
2	Hamilton	East	Over 3/4 mile	\$100,000 to \$299,999	\$43,000
3	Linda Vista	West	Over 3/4 mile	\$300,000+	\$348,000
4	Marshall	East	Over 1/2 mile	n/a	\$303,775
5	Cleveland	West	Over 1/2 mile	\$300,000+	\$296,000
6	Longfellow	Central	Less than 1/2 mile	\$100,000 to \$299,999	\$69,000
7	Washington	West	less than 1/4 mile	Less Than \$100,000	\$124,000

TOTAL COST

\$1,364,775

Cost by RIF Zone

West	\$768,000
Central	\$250,000
East	\$346,775
	<u>\$1,364,775</u>

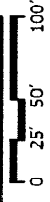
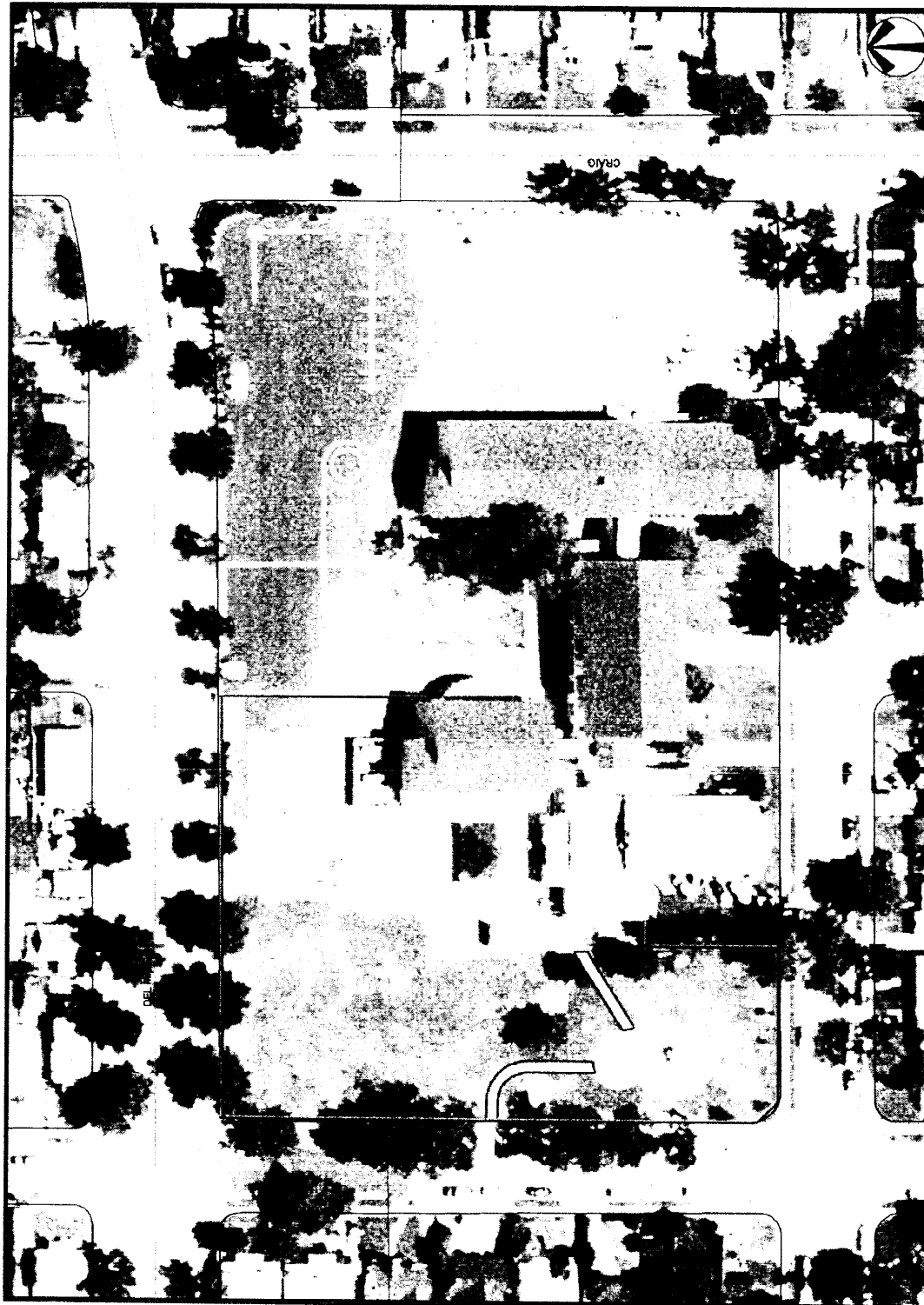


- EXISTING FENCE
- PROPOSED CHAINLINK FENCE
- EXISTING ENTRANCE
- PROPOSED PEDESTRIAN GATES
- NEW PICNIC TABLES & TRASH RECEPTACLE
- NEW PLAY EQUIPMENT
- PROPOSED ADA WALKWAY
- PROPOSED SHADE STRUCTURE - STEEL POST WITH FABRIC



CLEVELAND ELEMENTARY SCHOOL 524 PALISADE STREET, PASADENA
SCHOOL PARK IMPROVEMENTS



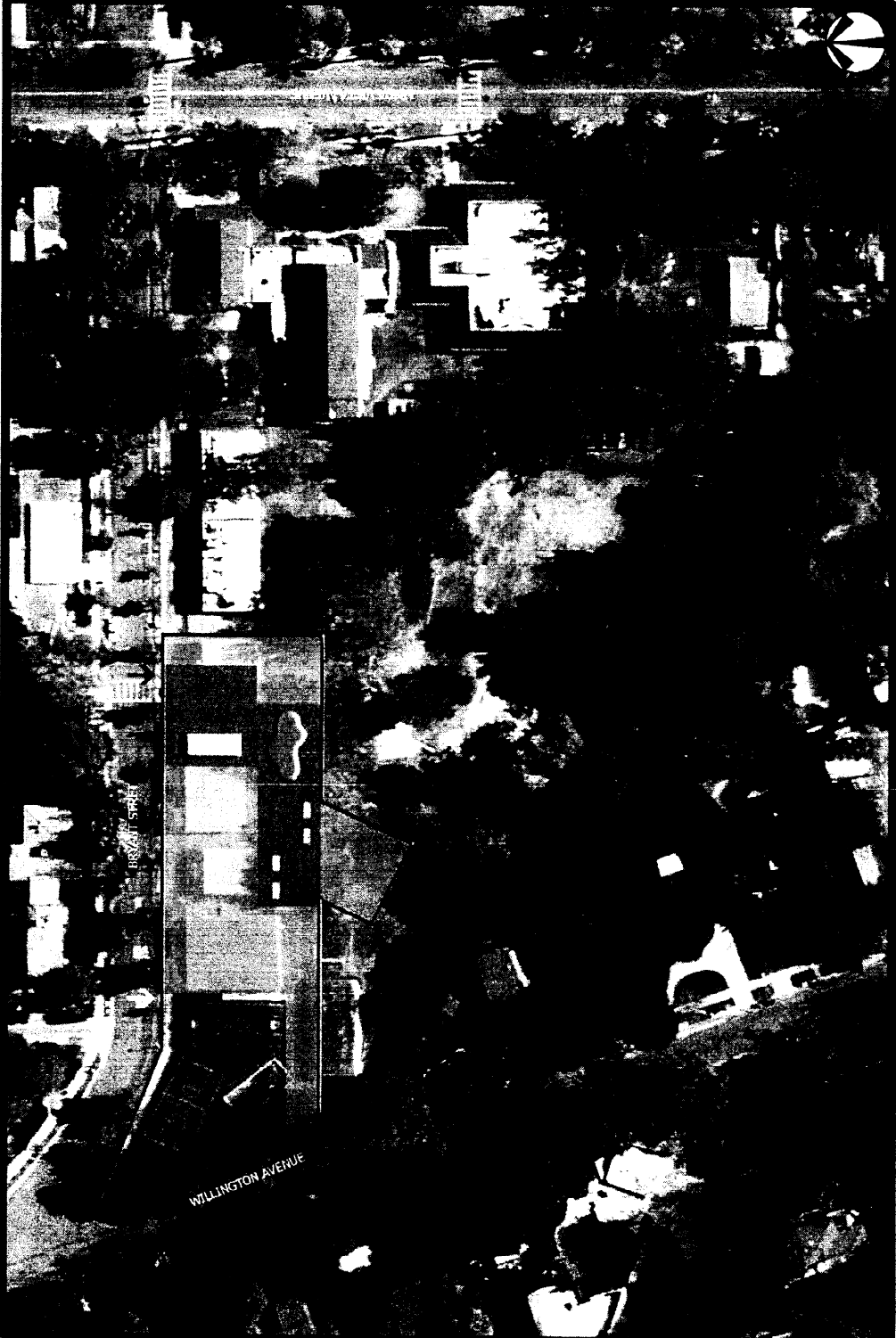


- EXISTING FENCE
- PROPOSED CHAINLINK FENCE
- ↑ EXISTING ENTRANCE
- PROPOSED ENTRANCE
- NEW PICNIC TABLES ON CONCRETE PADS AND TRASH RECEPTACLE
- PROPOSED ADA STABILIZED DECOMPOSED GRANITE WALKWAY
- RETROFIT EXISTING BASKETBALL COURT TO REGULATION HEIGHT, POSTS AND BACKBOARDS ONLY.



HAMILTON ELEMENTARY SCHOOL 2089 ROSE VILLA STREET, PASADENA
SCHOOL PARK IMPROVEMENTS





- EXISTING FENCE
- PROPOSED CHAINLINK FENCE
- EXISTING ENTRANCE
- PROPOSED PEDESTRIAN GATES
- PROPOSED BASKETBALL COURT
 - REGULATION HEIGHT
 - NO NEW STRIPING
- NEW PICNIC TABLES & TRASH RECEPTACLE
- NEW LANDSCAPING
 - NEW SOD AND IRRIGATION
- NEW PLAY EQUIPMENT
- EXISTING RESTROOMS



LINDA VISTA ELEMENTARY SCHOOL 1259 LINDA VISTA AVENUE, PASADENA
 SCHOOL PARK IMPROVEMENTS





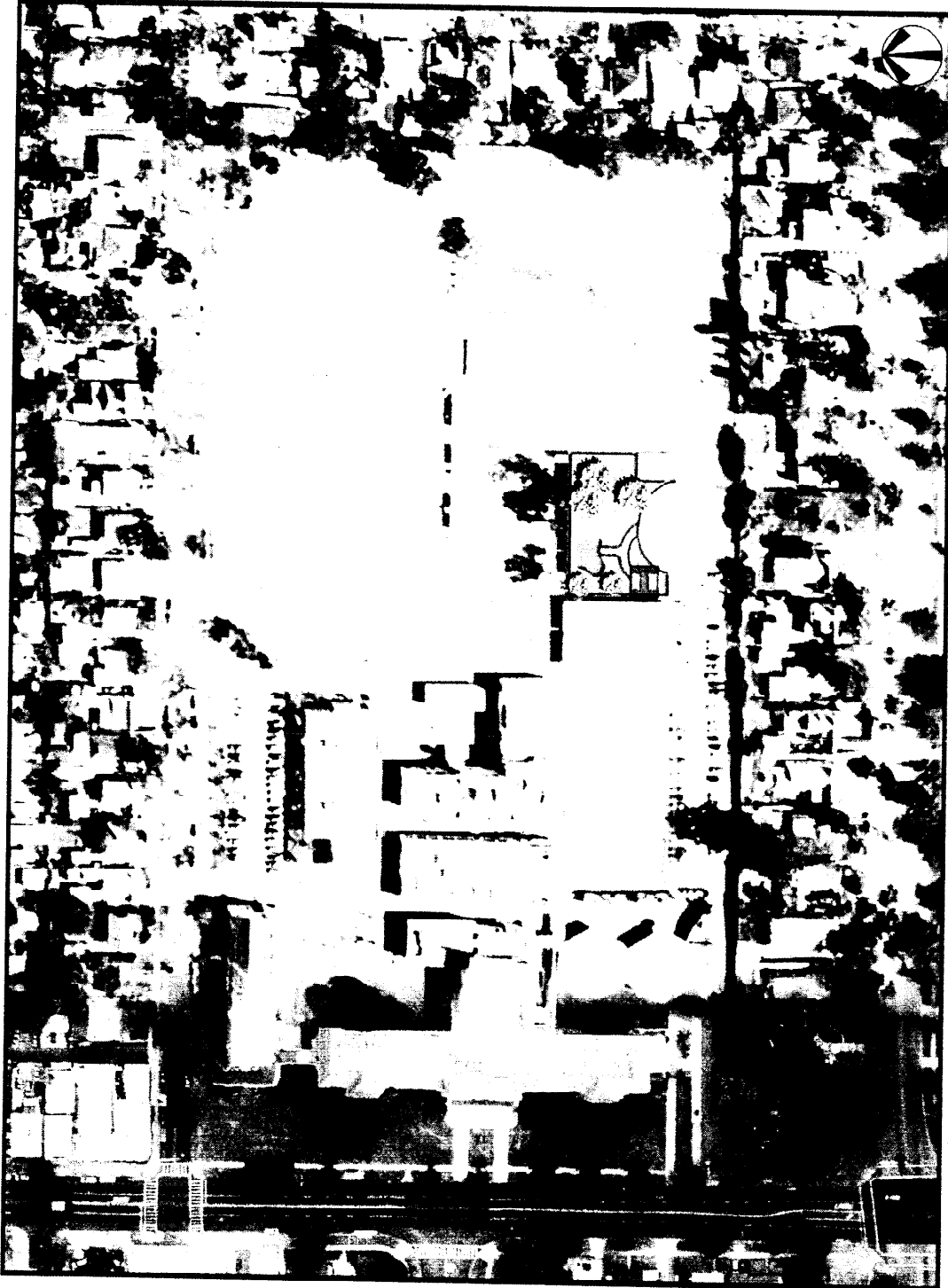
- EXISTING FENCE
- PROPOSED CHAINLINK GATE AND FENCE
- PROPOSED ENTRANCE
- ▭ PROPOSED ADA WALKWAY FOR EXISTING PICNIC AREA
- ☉ PROPOSED TREES IN EXISTING ASPHALT - 36" BOX TREES IN 5' SQUARE WELLS

0 25' 50' 100'

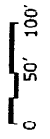


LONGFELLOW ELEMENTARY SCHOOL 1065 E. WASHINGTON BOULEVARD, PASADENA
SCHOOL PARK IMPROVEMENTS





- PROPOSED CHAINLINK FENCE
- PROPOSED ENTRANCE
- PROPOSED STABILIZED ADA DECOMPOSED GRANITE PATH
- PROPOSED 36" TREES
- PROPOSED SHADE CANOPY FOR TABLES
- PROPOSED PICNIC TABLES
- NEW PLAY EQUIPMENT



MARSHALL FUNDAMENTAL SECONDARY SCHOOL 990 N ALLEN AVE. PASADENA
 SCHOOL PARK IMPROVEMENTS





EXISTING FENCE

PROPOSED FENCE

- TUBE STEEL TO MATCH EXISTING

EXISTING ENTRANCE

PROPOSED ENTRANCE

PROPOSED BASKETBALL COURT

- REGULATION HEIGHT

NEW PICNIC TABLES & TRASH RECEPTACLE

REHAB LANDSCAPING

- NEW SOD AND IRRIGATION (CONTROLLER, VALVES
- LATERALS, MAINS, AIRD HEADS)

PROPOSED CONCRETE PAD

PROPOSED SHADE STRUCTURE

- STEEL POST WITH FABRIC

EXISTING PLAYGROUND

PROPOSED TREES



MCKINLEY SCHOOL 325 SOUTH OAK KNOLL AVENUE, PASADENA
SCHOOL PARK IMPROVEMENTS





- EXISTING FENCE
- PROPOSED CHAIN-LINK FENCE
- PROPOSED ENTRANCE
- PROPOSED ADA RAMP TO PLAYGROUND
- PROPOSED BACK STOP TO REPLACE EXISTING
- EXISTING BASKETBALL COURT - REGULATION HEIGHT
- PROPOSED TREES
- PROPOSED SHADE CANOPY FOR TABLES



WASHINGTON MIDDLE SCHOOL 1505 N. MARENGO AVENUE, PASADENA
SCHOOL PARK IMPROVEMENTS

