

Exhibit 4: About the Tenants

Questions for the Tenants

- What is your organization's mission?
- How long has your organization been in existence and how did your organization come about? How long have you been in existence at this location?

- Please describe the public benefits your organization provides and for how long those benefits have been provided.
- How many people does your organization serve? What is your service area?
- Are there fees for participation in your organization? Describe.
- How does your organization generate revenue to keep your operation going?
- What qualifies people for membership in your organization or to receive the services you provide?
- What fees do you pay to the City/RBR as part of your (sub)lease?
- Do you have other facilities you use and if so, what are they? What is your arrangement there (i.e. land owner, lessee, etc.)?
- Can you help give us your assessment of what other similar facilities/organizations exist in our area and how you would say they compare to what your organization provides?
- Is your membership growing? Describe Trend.
- Where do you see your organization heading in the next 5 to 10 years?

Questions for Tenants

Hahamongna Watershed Park Annex

Prepared March 30, 2006

City of Pasadena • Department of Public Works • Parks & Natural Resources Division

- **What is your organization's mission? Our mission statement is:**

Move A Child Higher (MACH 1) provides therapeutic horsemanship programs for children with disabilities. We put our children on horses to develop their physical strength, balance and agility; improve their mental abilities and coordination; and to allow them the sense of accomplishment that comes from mastery of the horse. We offer a safe place, a positive horse therapy program, and friendly people. On our horses the child acquires a whole new perspective of their abilities and their place in the world. We really do move a child higher.

- **How long has your organization been in existence and how did your organization come about? How long have you been in existence at this location?**

MACH 1 is celebrating our 10th year anniversary with the statement, "10 years of leading to greater abilities".

Our program came about when I discovered the benefits of horseback riding in strengthening my legs and back from polio as a child, and the resulting improvement of balance, that I found in therapeutic riding. Because of this, therapeutic horseback riding - using mounted exercises and OT games to improve the lives of children with disabilities - was started in Pasadena, CA. Move A Child Higher became and still is a 501-c-3 non-profit. MACH 1 is a NARHA (North American Riding for the Handicapped) Premier Center, We have three NARHA instructors that conduct lessons.

We established our presence in the City over 10 years ago. We have been in cooperation with the City since that time. When MACH 1 was invited by the Flintridge Riding Club to begin operations there in 1997 we gratefully accepted. We began with one pony and one child. Because of our growth, 7 years ago we began operations at Rose Bowl Riders as our second site which we used one or two months a year. However NARHA considered the two sites as one, separated by a road.

- **Please describe the public benefits your organization provides and for how long those benefits have been provided.**

Our public benefits are many: Since our inception volunteers remain the heart of MACH 1. Not only do they give their time but school children receive service

hours. Last year and this year students from over 21 grammar and high schools in the San Gabriel and San Fernando Valleys came to volunteer. 21 of our volunteers received the Presidential Award last year giving from 100 to 500 hours and two of our volunteers under fourteen years received the CA Governor's Award for 50 hours of service. Our volunteers gave well over 4000 hours in 2005. We provide volunteer opportunities for the Interscholastic Equestrian League. The League gave two full student scholarships in 2005.

We consider ourselves a teaching center and receive volunteers from various colleges including short term internships. We also have been conducting the USC Occupational Therapy Field Education Level One fieldwork twice a year for 9 years. For three years we conduct on site education for the Masters Physical Therapy students from Western Un. I also have conducted lectures at Western Un. and USC educating OT and PT students on the benefits of therapeutic riding. This year we'll give a lecture to over 80 Japanese students coming from various Universities in Japan.

We have also used the Girl Scouts and Eagle Scouts for various projects.

For three years we were involved in La Canada High School's 21st Century.

Those funders that donate their funds to a charity also benefit not only in giving to enhance a charitable cause but receiving a tax deduction.

For over 10 years those that are involved in the riding community have benefited from helping our special riders. We receive support from the El Monte Police including the mounted unit, Pasadena Police including the volunteer mounted unit, City of Pasadena in caring for the trails for our annual ride-a-thon, Rose Bowl Riders, Flintridge Riding Club, Interscholastic Equestrian League, and other barns and riders in the area.

We have provided therapy to over 100 children.

- **How many people does your organization serve? What is your service area?**

We provide lessons for 32 children and are about to include 4 more. We have over 60 program active on-site volunteers and receive students and volunteers from all over the San Gabriel and San Fernando Valleys.

- **Are there fees for participation in your organization? Describe.**

Our fees are provided through scholarships, three Regional Centers, and private fees. Three quarters of our students receive 100% funding.

- **How does your organization generate revenue to keep going?**

Our revenue is provided by various means:

Our largest fundraiser is our annual Horse show held at the Flintridge Riding Club in June.

We have an annual fall Ride-a-thon at Rose Bowl Riders supported by the City of Pasadena plus, donations, grants, student fees, and a year end mail campaign.

- **What qualifies people for membership in your organization or to receive the services you provide?**

The City of Pasadena, doctors, therapists, word of mouth, and regional centers will recommend a child for our services. As long as horse back riding is not contraindicated and a doctor's permission is granted we provide a specific lesson plan for each child.

- **What fee do you pay to the City/RBR as part of your (sub)lease?**

We pay Rose Bowl Riders \$85.00 per month per horse, not including feed and cleaning. We have four horses.

- **Do you have other facilities you use and if so, what are they? What is your arrangement there (i.e. land owner, lessee, etc.)?**

We have no other facilities at this time.

- **Can you help give us your assessment of what other similar facilities/organizations exist in our area and how you would say they compare to what your organization provides?**

As far as similar facilities existing we only recommend NARHA centers because of their strong professionalism in providing the best and safest programs in the world. The closest NARHA center is over 45 minutes away. We have the opportunity to be located in a city atmosphere where we are not only privileged to service the children living here but we are also able to educate the public in what we do. Pasadena has over 2,500 disabled children in the school systems.

- **Is your membership growing? Describe Trend.**

In 10 years we have steadily grown from 1 student to 35. One pony to 4 plus a donkey named, Mercy Lavender. If we had the ability we could easily quadruple. Our growth has steadily grown, however, we need to remain manageable in our present circumstance.

- **Where do you see your organization heading in the next 5 to 10 years?**

We're working on our 5 year business plan and should have it completed after our board approval. Our services are in high demand and we're looking to grow in the future.

**Rose Bowl Riders Presentation
Hahamongna Watershed Park Annex Planning Meeting
April 6, 2006**

**Emily Stork, President & Sue Lafferty, Secretary
Rose Bowl Riders**

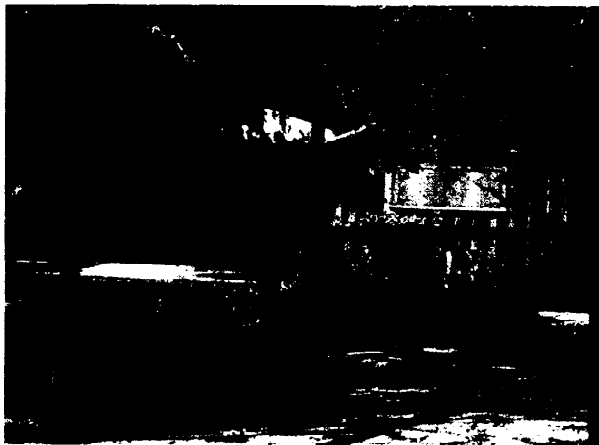


This presentation was prepared in response to a request from the City of Pasadena to provide information about Rose Bowl Riders. It was presented at the planning meeting held 4/6/2006 at the Jackie Robinson Center. The City's request was in the form of a series of questions and we have retained that framework.

What is your organization's mission?

Rose Bowl Riders is an all-volunteer not-for-profit organization whose mission is to promote responsible horsemanship and a love for horses. We offer clinics, trail rides, horse shows, play days, barbeques and breakfasts, community-based activities, and other events to our members and the public.

How long has your organization been in existence and how did your organization come about? How long have you been in existence at this location?



Incorporated in 1946, Rose Bowl Riders has called Hahamongna Watershed Park its home for over 50 years. Rose Bowl Riders was started by people who loved horses and the Pasadena area, and RBR came into existence with the help of the City of Pasadena. RBR's founders liked to ride from the Upper Arroyo to the Rose Bowl, tie their horses at the tie rails (which still exist) at the Brookside Restaurant, and have breakfast—thus the name "Rose Bowl Riders." These early members used the same trails that the community continues to enjoy, and the club still sponsors breakfast rides to Brookside.

Please describe the public benefits your organization provides and for how long those benefits have been provided.

It is important to note that Rose Bowl Riders is an all-volunteer organization and has no paid staff except a very part-time administrative person who works out of her home a few hours a month, and a gardener.

All of our community programs, events, horse shows, barbeques, family festivals, etc., are planned and implemented by the members of Rose Bowl Riders. We do it out of our love for horses and the outdoors and our strong desire to share this with others. Our volunteers work hard maintaining the facilities that are used for all the programs listed below.

Benefits for Young People



Kids are a real focus for RBR. We partner with a number of organizations to get kids involved with horses, and to share our beautiful facility – and our horses – with them. Our goal is to provide opportunities for kids to get involved in an activity that is

- wholesome,
- teaches responsibility and self-confidence, and
- fosters a love and respect for animals and the outdoors.

We provide:

- programs for Girl Scouts
- a meeting place for Boy Scouts
- afternoon barbeques for families from the Pasadena Ronald McDonald House that include activities for the kids and of course, horses
- horse-related art programs for at-risk kids, conducted by several members who are artists and art educators. One of these programs hosted a group from the Pico-Aliso housing project in East LA for a day of art lessons and a trail ride on the trusty Tom Sawyer horses
- affordable lessons, horse shows and riding clinics
- an “unorganized sports” opportunity for kids who don’t want to do organized sports – and there are plenty of those kids out there

We are working on developing more youth programs, including programs in partnership with Outward Bound Adventures, the Pasadena Police Activities League, and NATHA.

Rose Bowl Riders also supports two very important youth groups on a regular basis by housing their programs:

- The wonderful Move A Child Higher (MACH 1) therapeutic riding program. Many RBR members also help MACH 1 with their fundraisers and special events, and some of our young members have become volunteers too, and work with the MACH 1 horses and the kids. What a unique and wonderful opportunity for a young person to share their love for horses and help kids who are challenged!



- Tom Sawyer Camp which gets thousands of kids every year excited about being outside and getting dirty! Tom Sawyer Camp also has a program called BLAST, or Building Lasting Success Together, which is a counseling program for children with ADD and other developmental challenges, which is also housed at RBR

Benefits for the Community at Large

- We provide a wonderful recreational option for not just kids, but also for families and adults. Horses are something that everyone can do together, and we have many families in Rose Bowl Riders that do just that.
- We provide meeting spaces for a variety of groups from the community, at no charge whenever possible. However, anyone can rent the facility, including the clubhouse, for a minimal charge.
- We participate in many community events with our horses, including the Rose Parade and other local parades, and community festivals, like the Pintosca Park Family Festival last year, where one of our members took his horse Cody for the kids to meet and sit on. Many of the children had never even seen a large animal up close before! Our horses go out to schools, to the Blessing of the Animals, and even to the Huntington Library for a family day all about horses.
- RBR members also help maintain the trails and open space in the entire Pasadena area, and we go out to areas ranging from the Lower Arroyo in South Pasadena, all the way up to the National Forest. Some of our members are very active in graffiti abatement up and down the entire Arroyo.
- We are re-landscaping our property with California native plants in partnership with Cal Poly Pomona's graduate program in landscape architecture (in fact our volunteer Grounds Director is a landscape architect herself, and she is coordinating the project), We hope to be a model in xeriscape and utilizing water-saving landscape methods for everyone but especially for equestrian facilities
- Some of our members serve on the police volunteer mounted unit, and patrol the trails as an extra set of eyes for the Pasadena Police Department.
- We represent the interests of Pasadena and surrounding community in preserving our open space and providing trail continuity – and advocating for multi-use trails.

- We are preserving a semi-rural lifestyle that is disappearing very rapidly as development swallows up what little open space is left in southern California. People need open space and nature, and horses are a great way to enjoy the outdoors.



Benefits for the Horse Community

We also serve the horse community, which is quite large in the Pasadena area (especially for what is essentially an urban region), in a number of important ways:

- We provide facilities for local, regional and non-regional equestrian groups. For example, for many years we have provided free stabling for Rose Parade equestrian groups who are here from out of town.
- We provide low-cost stabling for the community, because we are a non-profit and volunteer-run –many of us could simply not afford to have a horse if it weren't for RBR's reasonably-priced facilities.
- We support affordable lesson programs by hosting trainers and making facilities available for lessons for people with or without their own horses
- We serve as an emergency facility in case of evacuations because of fire, flood and other natural disasters – we have the space to house a large number of horses and other livestock.
- We provide volunteers for regional emergency response for horses. Just a few years ago our member Betsy Bour rescued three horses that had gotten loose and were running up Angeles Crest Highway in the middle of the night.
- We set an example for the horse community in horse care and horsemanship. You will not find a neglected horse at Rose Bowl Riders. We maintain extremely high standards of care at RBR – large stalls, excellent feed, and stringent requirements for care and exercise. We are an example to the community and the world of a well-run, friendly, community-oriented non-profit equestrian organization
- Our first-rate physical facilities allow us to house MACH1, which is certified as a North American Riding for the Handicapped Association (NARHA) Premier Center. We also have the space for MACH 1 to grow and serve more children.
 - There is no other non-profit equestrian organization that has facilities that are open for use to other equestrian groups. Anyone can book the facility at a minimal fee.
 - We are the only remaining horse-keeping facility in the City of Pasadena, a city with a long history of horses. In fact, horse stables are being closed left and right, all over the LA area
- We provide access to one of the finest equestrian trail networks in the entire Los Angeles area



- We also pride ourselves at being very wildlife-friendly--that's important to all of us, being lovers of the outdoors: Rose Bowl Riders is quiet, open, and low-impact, and we have bobcats, coyotes, various birds of prey (we have a Cooper's Hawk nest in one of our trees, and a Great Horned Owl that frequents the property at night, for example), and numerous other species of birds that utilize the site. We're anxious to get the Girl Scouts to erect some blue bird houses for our population of Western Blue Birds.

How many people does your organization serve? What is your service area?

Rose Bowl Riders currently has 210 memberships. Because there are different types of memberships (individual, couple and family) this represents approximately 371 members. Our members live in Pasadena, La Canada, Altadena, South Pasadena, and other nearby communities.



However, many more people than just our members are served by the activities that go on at Rose Bowl Riders. Girl Scout Troops, children and their families from the Ronald McDonald House, campers who go to Tom Sawyer Camps, and the children who benefit from the therapeutic riding program at Move a Child Higher (MACH 1) and the BLAST after-school program are just a few examples of members of the community who are served by Rose Bowl Riders.

Are there fees for participation in your organization? Describe.

Individual Membership - \$60/ year
 Couple Membership - \$75/ year
 Family Membership - \$90/ year

Horse boarding fees are approximately \$289 per month. This includes hay, feeding, and stall cleaning.

How does your organization generate revenue to keep your operation going?

Our main sources of revenue, in approximate order of importance, are

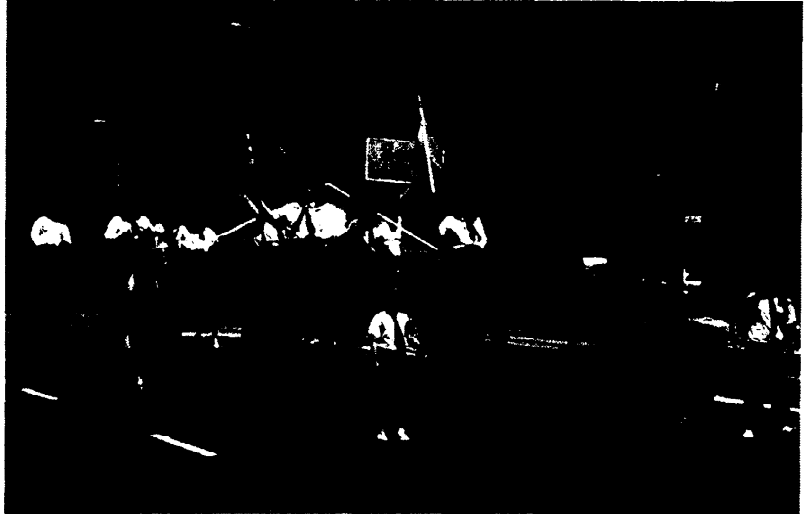
- Horse boarding
- Tom Sawyer Camp sub-lease
- Member dues
- Rental of facilities
- Events (clinics, horse shows & play days)
- Donations

What qualifies people for membership in your organization or to receive the services you provide?

Anyone who has an interest in horses and responsible horsemanship may join.

What fee do you pay to the City/RBR as part of your lease?

Rose Bowl Riders pays the City \$14,500 per year in rent.



Do you have other facilities you use and if so, what are they? What is your arrangement there (i.e. land owner, lessee, etc.)?

Rose Bowl Riders has no other facilities. However, we are located at the hub of five major trails. Members – and the public – use these trails to access Hahamongna Watershed Park, the Angeles National Forest, Cherry Canyon and the central and lower Arroyo Seco.

Can you help give us your assessment of what other similar facilities or organizations exist in our area and how you would say they compare to what your organization provides?

There are no other facilities like ours in this area. RBR is completely run by volunteers and operates on a non-profit basis.

Is your membership growing? Describe trend.

In the past 3 years, Rose Bowl Riders has experienced a 31% increase in its membership.

Where do you see your organization heading in the next 5 to 10 years?

Right now we're in the process of developing a strategic plan for our next 5 – 10 years. A recent survey of our members indicates clearly that our members want the club to continue in the same direction we're going now:

- Community outreach – this is a priority for us, serving the Pasadena community in a variety of ways through partnerships and collaborative efforts.
- We are working on expanding our boarding facilities to bring in more horses, expand our lesson programs and programs for kids, and give more folks the opportunity to get involved on-site.
- We want to make some capital improvements such as refurbishing the clubhouse to make it more usable for a variety of activities.

- We will continue to serve riders of all levels, while focusing on beginner and intermediate riders.



Most of all, we want to continue to be integral members of the Pasadena community, providing multigenerational, unstructured recreation opportunities for a broad audience, as a friendly, responsible, affordable, community-based, environmentally-friendly – and fun! – equestrian facility.

TSC ... We are thrilled to be celebrating our 80th Anniversary this year!

1. **Our mission:** Tom Sawyer Camps creates lifelong memories by providing fun-filled days where children feel happy and safe!

2. Tom Sawyer Camps was founded in 1926 by Bill and Al Shleicher in Laguna Beach as a summer resident camp for boys. Bill had had previous experience working at a YMCA camp and became highly motivated to develop a camp program for boys, understanding the benefits of what a camp environment provides.

In 1944, TSC moved to its current location, Hahamongna Watershed Park (formerly known as Oak Grove Park) and has been operating there for the past 62 years as a day camp. We are one of the pioneers in youth camping in Southern California, actively involved in and accredited by the American Camp Association as well as a member of WAIC (Western Association of Independent Camps). Over the years, our camp has maintained the commitment that every child should experience carefree, constructive activities in the out-of-doors in the tradition of Tom Sawyer and Becky Thatcher.

TSC has been providing horseback riding lessons as an integral part of its program since we moved to Hahamongna back in 1944. Our horse program's goals are to instill confidence and help overcome fear in each of our campers. Campers learn to respect the size and power of the horses and to control their trusty steeds.

Speaking specifically about the property that the city of Pasadena has just re-acquired, TSC is currently running year round horseback riding programs, our summer camp program and a unique After School Social Skills program called BLAST, for kids who need extra help with their social skills.

During the school year, we have 65 children a week who take riding lessons with us. We offer lessons everyday (excluding Sundays) and have group, private and semi private classes. Kids are riding with us from 3:00 – 5:30 everyday (and 8:00 am – 12:00 on Saturdays).

All of our horseback riders learn horse skills while using the arenas at RBR as well as the “Enchanted Forest” (a favorite riding spot for our pre school aged campers) and the trails that surround the MWP property and lead into the basin (“The Desert”).

During the school year, we also offer trail rides on the weekends to local families. We do about 6 trail rides a month, often to celebrate a young girl's birthday! We also work with many local Girl Scout troops, helping the girls to earn their horsemanship badge (we even just did a class for all the third graders at the Waverly School on The horse digestive system ... the kids got to see what happens at both ends of a horse!). Many people come to us with an idea of a program for children and horses and we work with them to create just about anything that fits their needs and interests!

Over the two-week winter holiday break, we provide full day horse lessons to approximately 30 kids a week.

During our year round lessons, we have children with special needs riding with us as well (children who are diagnosed with Pervasive Developmental Disorder and are on the Autism Spectrum).

In the summer, our number of campers and horses increases to approximately 400 children a day and a herd of approximately 50 horses. Our campers ride from 10:00 – 3:00 daily, Monday through Friday. We also offer an additional program for our horse crazy campers from 4:00 – 6:00 (Monday through Friday). At anytime during the day, we have over 46 kids using the arena, the Enchanted Forest and the surrounding trails all on horseback! We also have a horse staff (high school and college aged students) of 16 who are from the local areas, many who have grown up as campers in our program.

And on every other weekend during the summer, we do 3 different trail rides with our camp families (16 riders per trail ride). Our Sunday trail ride is one of the most popular since we have a BBQ at the end up at the RBR clubhouse.

We have a full time employee who is our Operations Manager that lives in a house on the property, running our horseback riding program as well as maintaining the property and providing round the clock security for not only our horses but also the horses that belong to the members of RBR. He also assists in the overall maintenance of the area and works closely with Park personnel and RBR club members.

BLAST: We started our BLAST program in 1996 as a response to the lack of special programs that teach essential skills and increase a child's self-confidence in social situations. We have three different aged programs – Mini Blast (5-6 year olds), Elementary Blast and Middle School Blast. The program runs 5 days a week (every afternoon from 3:30 – 5:00) and takes place at the RBR clubhouse. Our Blast program has become a big success and usually has a waiting list each session. Many of the children who participate in this program are funded by the Lanterman Regional Center. And, of course, one of the highlights of Blast is horseback riding with the kids every Tuesday.

During the summertime, we also use the property for other camp activities ... A Low Ropes Challenge Course for our Middle School kids (all teambuilding activities), an archery course for kids aged 6 – 14, and our annual "obstacle" course (a highlight of the summer for our campers) which includes jumping, climbing and rolling ... all though MUD, of course!

We currently store 20 of our vans during the winter on the property as well. They are moved during the summer months since they are used for our summer camp.

3. **The Benefits:** Camp Give kids a World of Good! We hear over and over again from our parents (and staff!) that their children gain confidence and learn to take safe risks in a caring environment while participating in our program. Campers also develop an awareness and appreciation of the natural environment. Our program has not changed much over the past 80 years; we have a successful formula that proactively supports and promotes positive human development, in both our campers and staff!

ACA's research shows that campers who attend camp gain self-confidence and that specifically camp helped them to feel good about themselves and to make new friends! TSC helps build self confidence, strengthens social skills, increases cooperation, explores and appreciates nature and best of all, provides a FUN, safe supervised setting.

TSC expanded its program in 1997 to allow more children to experience the magic of camp ... we opened TSC Too in Arcadia at the Arcadia County Park where approximately 100 children attend camp every day in the summer time.

4. We serve over 1600 campers a year (approximately 1000 families). Our service area is broad – most of our campers are from the San Gabriel Valley but we have had children from as far as Japan attend our programs! Many kids travel from all over LA County to participate in our Blast program as well.

5. **Fees:** Children pay to participate in all of our programs.

Year Round Horse lessons: \$96 for a four-week class (one day a week for an hour)

Trail Rides: \$25 for a 1½-hour ride.

Blast: Approximately \$800 for an 8 week program (Two days a week). Parents are able to submit bills for insurance companies to cover (group therapy). We do have scholarships for Blast based on need.

Summer Camp:

We offer more than 30 camperships each summer to children enrolled in PUSD as part of our lease agreement with the City of Pasadena. We are thrilled about this program – In Summer 2005 we gave out 42 camperships at a value of \$32,410 (average \$771 per camper).

Donations:

We give out over 30 different “donations” each year to local schools and non-profits to help with their fundraising events they hold. This past year, we have donated 15 “camperships” and 10 horseback riding classes to support the silent auctions that these groups held.

6. **How do we generate revenue?** People pay to participate in our programs!

7. What qualifies people to receive services? Again, people pay a fee to participate in our program.

8. Fee to RBR? We have a “sub-lease” with RBR. Last year we paid RBR almost \$16,000 for rental space (corral) and use of the Clubhouse for our Blast program.

In addition, our Operations Manager provides both security and some onsite maintenance to the club.

9. Other Facilities:

Hahamonga Watershed Park – permit

Muir High School Pool – permit

Arcadia County Park – permit

Eaton Dam Stables – agreement

Bonelli Park – permit

10. Similar Organizations:

There are many other local summer day camps (agency and private) but none that are ACA accredited. Our program is very unique in comparison to these other programs because of the horseback riding program of it as well as the door to door transportation provided during the summer.

There are other local riding stables, but TSC offers basic horsemanship as opposed to specific disciplines (i.e. English, dressage, etc). The cost for our riding lessons is very reasonable in comparison to other programs since we provide the horses and do not require membership to the organization to ride.

11. Membership Growing?

Our numbers are continually growing, so much to the point that we are almost at full capacity in ALL of our Programs.

We started TSC Too to expand our summer camp.

We also started a Monrovia Blast program to allow more kids to come to Blast (Elementary aged).

We are flexible with our year round horseback riding lessons and are able to squeeze more kids into our lessons by adding instructors to our classes.

12. Where do we see our Organization in the next 5 to 10 years?

We have developed a successful formula for camp. The most logic decision would be to expand geographically to other areas in Southern California.

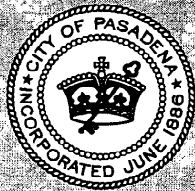
We often talk to local Non-Profits (i.e. Five Acres and Outward Bound Adventures) about providing horseback riding lessons at a dramatically reduced fee to allow their clients to participate in our program. We are always interested in partnering with local groups whose kids might never get the chance to ride a horse! In fact, over the past two years we have worked with a camp located in Northwest Pasadena called "Smile awhile" subsidizing our horse program so their kids could get the chance to ride. We had 10 kids a class in an eight-week class. Many of their campers have special needs as well, opening, blending "typical" kids and special needs kids together in one class,

Talk about CIC!!!

Exhibit 5



**Hahamongna Watershed Park Annex
Celebration & Open House**



**Saturday, January 28, 2006
10 a.m.-2 p.m.**

SCHEDULE

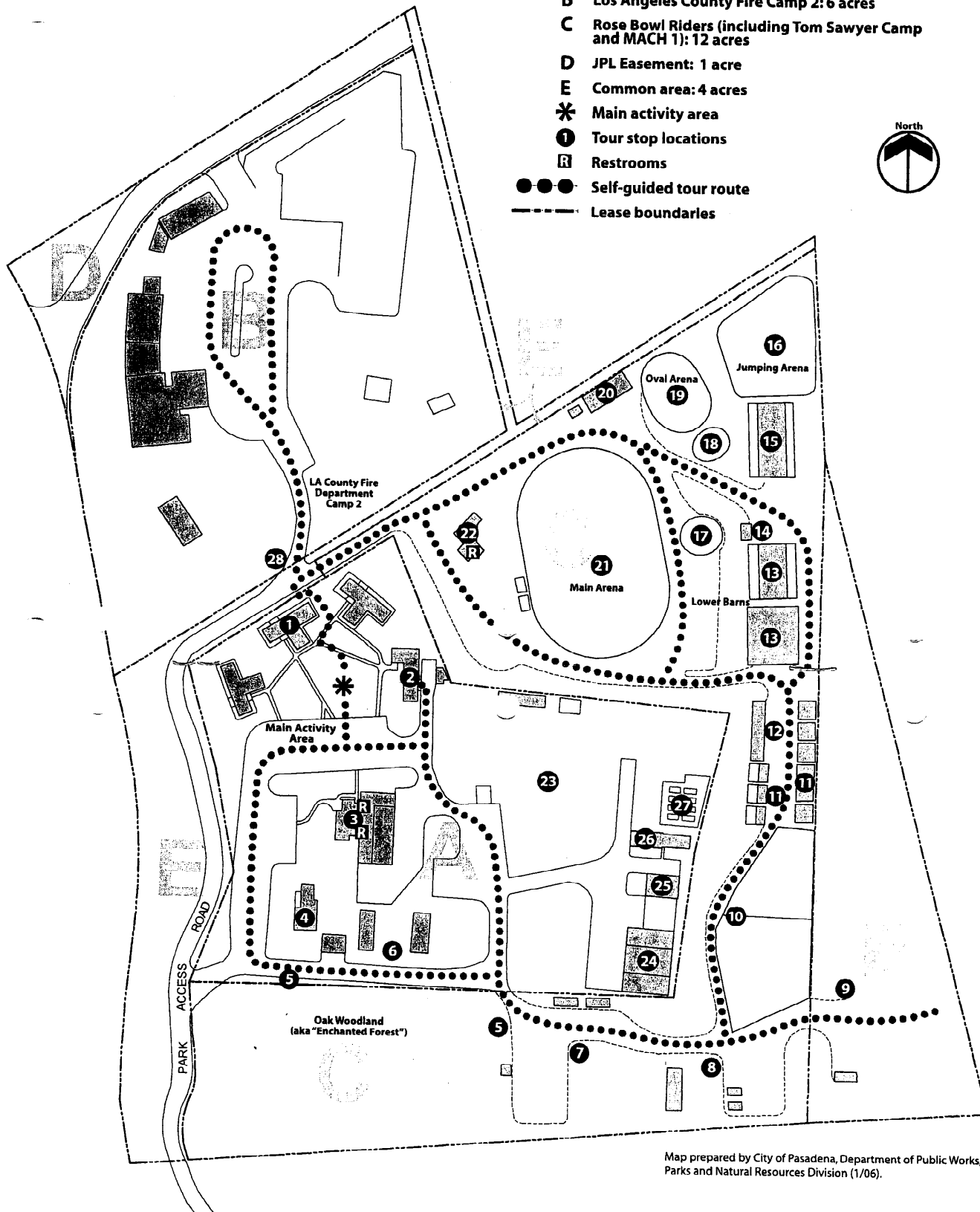
January 28, 2006
10:00 a.m.-2:00 p.m.

- 10:00 a.m.-2:00 p.m. Self-Guided Tours of Site**
You are invited to use your self-guided tour brochure to explore the park annex and share your thoughts!
- 10:00 a.m.-2:00 p.m. Equestrian Demonstrations**
Learn more about the existing equestrian programs and facilities by participating in any of the following activities:
- Western Horsemanship Clinic (on-going: main arena)
 - MACH 1 Lessons (on-going: oval arena)
 - Tom Sawyer Camp Lessons (on-going: oak woodland)
 - Rose Bowl Riders Barn Tours (11:30 a.m.-2:00 p.m., lower barns)
 - Dressage Demonstration (11:45 a.m.-12:45 p.m., main arena)
 - Horsemanship 101 (12:00-2:00 p.m., lower jumping arena)
 - Jumping Demonstration (12:30-1:15 p.m., lower jumping arena)
- 10:00 a.m.-2:00 p.m. Los Angeles County Fire Department Helicopter Demonstration**
(at the Los Angeles County Fire Department Camp 2)
- 11:00 a.m.-11:30 a.m. Program (main activity area)**
- Welcome and Introduction of Special Guests**
Kathy Woods, Parks & Natural Resources Administrator, City of Pasadena
- Thoughts from our Leaders**
Joyce Streater, City Councilmember, 1st District
Bill Bogaard, Mayor of Pasadena
Tim Brick, Metropolitan Water District Boardmember for Pasadena
Carol Liu, California Assemblymember, 44th Assembly District
- Significance of the Day**
Anita Fromholz, Chair of the Hahamongna Watershed Park Advisory Committee
- The Past, the Present and the Future for the Hahamongna Annex**
Rosa Laveaga, Arroyo Seco Supervisor, City of Pasadena
- Sage Ceremony**
Chief Anthony Redblood Morales & Andrew Guiding Young Cloud Morales:
Gabrieleno/Tongva Tribal Council of San Gabriel
- 11:30 a.m.-2:00 p.m. Desert Sage (main activity area)**
Enjoy music from L.A.'s homegrown bluegrass/groovegrass band!
- 1:30 a.m.-2:00 p.m. Art Activities-"Clay Bugs" (main activity area)**
Robert Hilton, Alex Sanchez & Lark Crable,
Armory Center for the Arts



Legend

- A Former US Forest Service (now vacant): 7 acres
- B Los Angeles County Fire Camp 2: 6 acres
- C Rose Bowl Riders (including Tom Sawyer Camp and MACH 1): 12 acres
- D JPL Easement: 1 acre
- E Common area: 4 acres
- * Main activity area
- ① Tour stop locations
- R Restrooms
- Self-guided tour route
- Lease boundaries



Map prepared by City of Pasadena, Department of Public Works, Parks and Natural Resources Division (1/06).

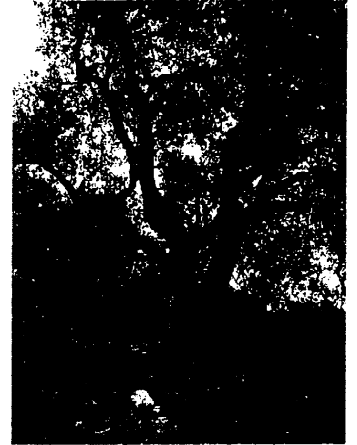


Hahamongna Watershed Park Annex

Self-Guided Tour • January 28, 2006

TOUR STOPS

Each of the following is located on the accompanying map and identified by the corresponding number.



1. Barracks (includes three buildings)

Concrete block building containing three large rooms, men's restroom and shower room. (Part of former U.S. Forest Service compound)

2. Mess Hall

Concrete block building containing a commercial kitchen, large pantry, large dining room, cook's quarters, full bath, 3 rooms. Roof needs to be replaced. (Part of former U.S. Forest Service compound)

3. Administration Building

Concrete block building containing multiple offices equipment garages with roll-up doors (6 bays), one ADA unisex restroom with outside access only, and one interior unisex restroom with ADA access. (Part of former U.S. Forest Service compound)

4. Residence

Concrete block building containing living room, dining room, 3 bedrooms, full bath, fenced back yard, and 2 car garage. Residence is currently temporarily rented to caretaker/night-watchman. (Part of former U.S. Forest Service compound)

5. Oak Woodland

Three acres of coast live oak woodland. Area is used both by Tom Sawyer Camps and Rose Bowl Riders for equestrian riding. It is referred to by Tom Sawyer Camps as 'the enchanted forest'.

6. Mobile Home Units

Owned and occupied by a recently retired & soon-to-be retired U.S. Forest Service employees. Both tenants and units will vacate the site by March 1, 2006. (Part of former U.S. Forest Service compound)

7. Tom Sawyer Camps

This area contains the parking area for the camp vans, as well as the camp's operations and maintenance facilities.

8. Tom Sawyer Camps

This area contains the mobile home unit for Tom Sawyer's Wrangler (camp maintenance foreman) as well as various equestrian facilities that support the camp operations.

9. Common Area

This common area is used for the park access road, as the City's arroyo stone/boulder storage area for park and public projects and for some of Tom Sawyer's equestrian waste management.

10. Tom Sawyer Camps Horse Corrals

These corrals house the horses that are used for the summer camp and also are used for the year round horse riding lesson program.

11. Rose Bowl Rider (RBR) Lower Horse Stalls

These are horse boarding stalls that are individually rented on a month to month basis. These were the first stalls to be built at Rose Bowl Riders and their equine occupants are still happily in them!

12. RBR Tack Room

The Tack Room is the location where the equipment needed to both ride and care for the horse is stored. This includes saddles, bridles, saddle pads, bareback pads, brushes, hoof picks and a variety of other accessories needed in caring for horses. Just outside the Tack Room are tie rails.

13. RBR Lower Barns

This barn was the second set of stalls built on the property and boasts a covered barn aisle, cross ties and half and fully covered stalls. This barn also has a refrigerator to store carrots and medicine, a telephone and message board.

P A R T I C I P A N T S

Hahamongna Watershed Park Advisory Committee (HWPAC)

HWPAC is composed of the members of the Parks and Recreation Commission, two members of the Northwest Commission and two members of the Utility Advisory Commission. The purpose and function of the HWPAC is to advise the City Council on matters related to the Hahamongna Watershed Park. The HWPAC will serve as the advisory body during the planning process for the Hahamongna Watershed Park Annex.

City of Pasadena, Parks & Natural Resources Division

The Parks and Natural Resources Division (P&NR) is a division of the Department of Public Works. P&NR is responsible for the planning, design, construction and maintenance of all city parks and public open spaces. P&NR was responsible for the management and preparation of the Arroyo Seco Master Plans and will also manage the planning process for the Hahamongna Annex Project.

National Park Service-Rivers, Trails and Conservation Assistance Program (RTCA)

RTCA works with community groups, nonprofit organizations and all levels of government agencies to achieve locally-defined goals related to natural resource conservation and outdoor recreation. The City of Pasadena requested and was granted assistance from RTCA to provide support to the Hahamongna Watershed Park Annex planning process. RTCA implements the natural resource conservation and outdoor recreation mission of the National Park Service in communities across America by helping our local partners achieve on-the-ground successes for their projects.

Los Angeles County Fire Camp 2

The Los Angeles County Fire Department's Fire Suppression Camp Section is responsible for managing 10 Fire Suppression Camps, the Department's Heavy Equipment Unit, and the Prescribed Fire Program. The Fire Camp paid program started in the early 1940s at Camp 2, which is located within the Hahamongna Watershed Park Annex. The fire crew, fly crew and dozer team resources in the Camp section fulfill a significant role in the California Wildland Fire Fighting arsenal and are utilized throughout the state for wildland fire fighting. Los Angeles County has a 50-year lease agreement for the property they occupy.

Rose Bowl Riders

Rose Bowl Riders (RBR), a non-profit, volunteer operated horse facility and social club, was founded in 1946. In 1950, with the help of the City of Pasadena, the club moved to its present location in Hahamongna Watershed Park. On twelve acres of scenic property, RBR has thirty-four boarder stalls, three arenas, a round pen, turn out rings, nine guest stalls and a tree-shaded cross country course. RBR offers riding lessons, clinics, horseshows, social events, and community outreach events. Rose Bowl Riders is also home to the popular Tom Sawyer Camp riding program, MACH 1, a therapeutic riding program, and BLAST, an after school program for children with special needs. RBR currently holds a year-to-year lease from the City of Pasadena.

Tom Sawyer Camps

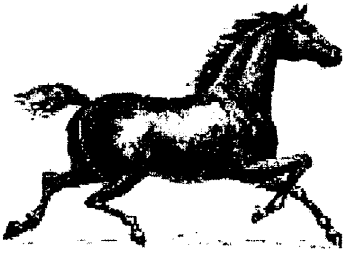
Celebrating 80 years of camping this year, Tom Sawyer Camps was established in 1926. Since 1944, TSC has been enjoying the rugged wilderness at Oak Grove Park (now Hahamongna Watershed), providing children an outdoor experience like Tom Sawyer and Becky Thatcher. TSC has been using the new Hahamongna Annex year round to continue the fun and outdoor experiences that we provide year after year during the summer. We offer year round horseback riding lessons in the "Enchanted Forest" instill confidence in our campers and help them to learn respect for both their horse and the surrounding nature. We also have various youth groups coming to use our Low Ropes Course to do team building and develop leadership skills. And of course during the summertime, campers can be found running through an obstacle course, shooting arrows at targets in archery to earn the esteemed Bulls Eye badge and learning horse care before heading off on a trail ride. TSC operates within RBR's lease area.

Move A Child Higher (MACH 1)

Move A Child Higher (MACH 1) is a therapeutic horseback riding program for disabled children located in the Hahamongna Watershed Park based at Rose Bowl Riders. The program is a North American Riding for the Handicapped Association (NARHA) Premier Center and is in cooperation with the City of Pasadena. We have 35 children participating and over 70 volunteers. It's fun but it's a lot of other things too; it's work, it's overcoming fear, it's communicating with an animal and it's stretching capabilities. MACH 1 operates within RBR's lease area.

Gabrieleno/Tongva Tribal Council

The indigenous people of this region, known as the Tongva, lived in villages reaching from wind-swept San Nicolas and Catalina Islands to the San Gabriel Mountains, and from Topanga Canyon to Laguna Beach. Their culture with many clans, each having its own chief, shared religious practices, language and legends; wove intricate baskets; carved stone bowls; and plied the ocean in swift canoes. Anthropologists grouped them under the labels Gabrielino and Fernandeno, derived from the Spanish missions established in their homelands some 250 years ago. Since long before the first contact with the Spanish, the existence of the Tongva on these ancestral lands has been unbroken for more than 3,000 years. The Gabrielino/Tongva Tribal Council, along with clans located throughout these lands, continue their efforts at cultural recovery and renewal, through language, song, dance, music, basketry, story telling, ceremonial regalia, and spiritual traditions.



14. RBR Wash Rack

The Wash Rack is where the horses get bathed and washed down. The Wash Rack is a cement platform with tie rails where people can bathe and hose down their horses.

15. RBR Upper Barn

The upper barn was the last set of stalls built here and has a covered barn aisle and half covered stalls.

16. RBR Jumping Arena

The jumping arena is solely for the purpose of jumping. It is important to have a separate arena for jumping so that riders on the flat and riders over fences do not interfere with one another. It is also the only arena where obstacles are set up on a permanent basis.

17. RBR Round Pen

The round pen is an area where you may lounge your horse. Lounging is a method of exercising or training a horse using a long rein (lunge line: from 20 to 45 ft.) that is attached to the cavesson, halter or bridle. The horse performs circles around the trainer, who stands in the middle holding the lunge line and directing the horse.

18. RBR Turn Out Pen

This pen is used for turning one's horse loose to have some free time on their own.

19. RBR Oval Arena & MACH1 Teaching Arena

The size of this arena makes it ideal for beginner and intermediate lessons. When you have riders and horses new to the art of riding it is best to learn in a smaller area so that you may be close to your trainer at all times.

20. MACH1 Barn

This barn is for Move a Child Higher (MACH 1), a therapeutic riding program for disabled children. All four of the horses stabled here are used in their program.

1. RBR Main Arena

This is the largest arena on the property and is used for all of horse shows and clinics throughout the year. It is also a great place to turn your horse loose to run!

22. RBR Main Clubhouse

The clubhouse is used by the Board of Directors for their monthly meetings. It is also used for various RBR parties and events throughout the year as well as Building Lasting Success Together (BLAST), a unique after school program for children who need assistance to experience success in the classroom, playground or extracurricular youth activities. The clubhouse and picnic area are also rented out during the year for parties, meetings and events.

23. Storage Yard Area (Part of former U.S. Forest Service compound)

24. Pre-fabricated Metal Buildings with Covered Metal Shed Roof

Includes: a) one small office, half bath and one large storage room; b) One large storage room with wide roll-up door; and c) covered equipment garage between buildings. (Part of former U.S. Forest Service compound)

25. Pre-fabricated Metal Storage Building

This structure has stair access and two storage rooms under loft (part of former U.S. Forest Service compound).

26. Pre-fabricated Metal Nursery Building

This building contains a plant lab, small office, half-bath, lab/work room, green house (Part of former U.S. Forest Service compound).

27. Plant Nursery Growing Beds

The beds sit atop a concrete slab for potting and includes access to ten beds. (Part of former U.S. Forest Service compound). The USFS had an agreement with the Arroyo Seco Foundation in years past for use of this area.

28. Los Angeles County Fire Camp 2 Compound

This facility is used for County wide training, conference and community outreach for groups up to 75. An emergency medical service helicopter and fire suppression helicopter also utilize Camp 2.



PLANNING PROCESS

By attending today's celebration and open house event, you have already participated in the planning for the Hahamongna Watershed Park Annex! The following describes the anticipated planning process for the Annex. Please note that all timeframes are tentative and subject to change. There will be several other opportunities to participate. We encourage you to stay involved as we move forward together.

Step 1: Property Purchase Closure/ Administrative Matters (October '05– January '06)

Step 2: Project Kick-Off and Celebration (January '06)

Step 3: Research and Data Collection (November '05– March '06)

- Collect existing conditions data
- Conduct aerial mapping survey of property
- Initial planning workshop to present research

Step 4: Develop Planning Framework (January–March '06)

- Articulate vision statement based on input from community and other stakeholders
- Develop set of project goals & objectives based on input from community and other stakeholders

Step 5: Prepare Draft Park Expansion Plan (March – May '06)

- Design workshop to develop concept plans & other recommendations
 - Develop draft plan for the HWP annex project that identifies proposed park/land uses, circulation patterns, basic infrastructure recommendations, concept-level programmatic recommendations, and concept-level management recommendations
- Review of draft plan by committee, community and others

Step 6: Prepare Final Park Plan (May–July '06)

- Integrate comments from review of draft plan
- Final workshop to present draft plan and solicit feedback
- Develop final draft plan for HWPAC to recommend to City Council
- Prepare necessary CEQA document
- Present final draft and CEQA document to Council for adoption/certification

For more information, call Parks & Natural Resources Division at (626) 744-4321. You can also stay informed by visiting the City's Arroyo Seco webpage at <http://www.ci.pasadena.ca.us/arroyoSeco.asp>.

The City of Pasadena would like to extend a very special thank you to those who supported today's event, including:

- US Forest Service for working closely with the City of Pasadena during the property transfer process
- Trader Joe's for their generous donation of refreshments
- Arroyo Seco Foundation for assisting with event outreach
- Armory Center for the Arts for coordinating and donating their resources for today's art activities



Exhibit 6



Office of the President

March 26, 2007

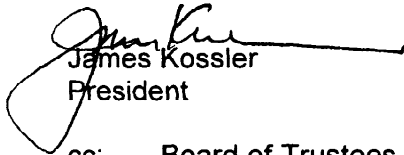
Members of the City Council
CITY OF PASADENA
100 N. Garfield Avenue
Pasadena, CA 91109

Dear Members of the Council,

I am happy to support the proposal, detailed in the attached letter from our faculty members, for the possible use of facilities at the Hahamongna Annex by the College's Environmental Studies program. As they mention in their proposal, there is the potential for a great match between the instructional program and the Annex.

Thank you for your consideration of our proposal.

Cordially,


James Kossler
President

cc: Board of Trustees



Martin Pastucha
Public Works Director
117 East Colorado Blvd. 4th Floor
Pasadena, CA 91105

Natural Sciences Division

Cc: Cynthia Kurtz, City Manager

Dear Mr. Pastucha,

March 26, 2007

We are writing to tell you about a new interdisciplinary Environmental Studies Program at Pasadena City College that will begin in the fall 2007. This innovative program is designed to match closely the Urban Environmental Accords and Actions proposed by the United Nations in 2005 and adopted as Pasadena's Green City Action Plan. A central goal for our program is to locate our alternative classrooms and field laboratory in a "green" space in Pasadena (as a campus satellite). Earlier this year, we began searching for an off-campus field site to run the program. In February, Dr. Dave Douglass, Dean of Natural Sciences at PCC, informed us of the Hahamongna Annex property. We gathered participating and interested faculty, along with the Dean, and toured the grounds and facilities at the north end of the park. All of us at PCC immediately concluded that our program and the Annex would make a great match! Therefore, we would like to propose a partnership between Pasadena City College's Environmental Studies Program and the Hahamongna Annex.

Initially, we would like to use the "seed shed" and the open space to the north of the building with the raised bed planters to pilot our program in the fall of 2007. Then, as the buildings are retrofitted and become available, we envision occupying two of the adjacent classroom-type buildings at the north edge of the property (in addition to the seed shed and raised beds area). We would be very interested in occupying the building with the commercial kitchen as it would make an excellent lab facility, but any two adjacent buildings would be fine for our needs. We are willing to explore a formal contract with the city concerning the use or leasing of space and buildings.

In the fall of 2007, two sections of Environmental Science (Biology 37) and Freshman Composition (English 1A) would be taught at Hahamongna. This would entail approximately 64 students spending

the better part of two days a week at the site. In the spring we would increase to 4 days a week with a total of 128 students. In keeping with the Green City Action Plan and our own environmental philosophy/pedagogy, we have decided to require students to carpool or use public transportation so that a maximum of 20 cars connected to our program would be parked on site at any given time. We have a grant from the Parsons Foundation for a mobile outdoor laboratory facility that will be used to pilot this project, so initially we will require minimal alterations and repairs to the seed shed.

We have designed an interdisciplinary, hands-on, teach-to-learn program comprised of required and transferable courses for first and second year college students. In addition to the foundation courses for the pilot (English and Environmental Science), we plan to add courses in the future (possibly art, architecture, anthropology, and a broader range of science offerings). Our goal is to facilitate learning through student-driven projects installed on site. These projects will serve as models for activities in the Pasadena community at large and will provide enhancements to the Arroyo Seco.

Ongoing student research projects will include:

- Creation of an artificial wetlands for gray water recycling (a continuation of a research project funded by the LA Municipal Water District and the United Nations in 2006)
- Composting methods and technology
- Organic urban gardening
- Habitat restoration and water testing in the Arroyo Seco (removal of nonnative species and planting of native vegetation)
- Design and implementation of a user-friendly and economically viable recycling program (to be installed, we hope, at Pasadena City College and elsewhere in the city)
- Alternative energy testing and technology training

We are eager to partner with the city to make the Hahamongna facility a better place for all of its occupants and users, and thus we are prepared to write grants and acquire funds from outside sources to supplement the support provided by Pasadena City College. We have already begun looking for funding opportunities with the college's grant writer. So far, additional partnerships include the Pasadena Unified School District. Our contact there is Roger Gray, a teacher at Marshall Fundamental School and one of the members of the Environmental Advisory Commission. Concerning the use of urban trees and native plants, we will partner with Jim Folsom, Director of the

Huntington Gardens. We have also been asked to partner with Merrilee Fellows of NASA to participate in the cleanup of the arroyo. This is only the beginning; certainly more relationships will develop once the program is up and running.

We would love to talk with you further about our program and the City's Green Action Plan—as soon as possible. PCC's schedule of classes for the fall 2007 semester will be published very soon. Please contact Professor Russ Di Fiori at 626/585-7176.

Sincerely,

Professors

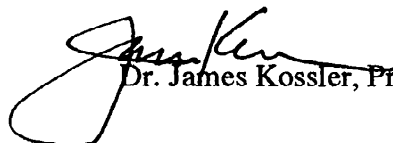
Russ Di Fiori



Krista Walter



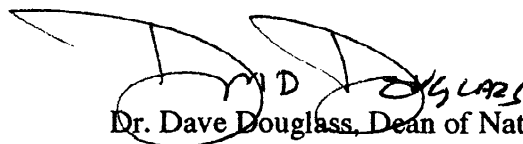
Erika Catanese



Dr. James Kossler, President



Dr. Jackie Jacobs, Vice President, Instruction



Dr. Dave Douglass, Dean of Natural Sciences



Beverly Tate, Interim Dean, English



OFFICE OF THE DIRECTOR

April 25, 2007
JPL #7333

Members of the City Council
City of Pasadena
100 N. Garfield Avenue
Pasadena, CA 91101

Dear Members of the Council:

JPL is pleased to support the Environmental Education Center as proposed in the Draft Concept Plan for the Hahamongna Watershed Park Annex. Such a center will certainly be an asset to the community, and could also serve JPL as an alternate venue for training or small conferences that cannot be held on the Oak Grove Campus.

Sincerely,

A handwritten signature in black ink, appearing to read 'C. Elachi'.

Dr. Charles Elachi
Director

JET PROPULSION LABORATORY
CALIFORNIA INSTITUTE OF TECHNOLOGY

4800 Oak Grove Drive
Pasadena, California 91109-8099
(818) 354-5673



COUNTY OF LOS ANGELES

FIRE DEPARTMENT

1320 NORTH EASTERN AVENUE
LOS ANGELES, CALIFORNIA 90063-3294
(323) 881-2401

P. MICHAEL FREEMAN
FIRE CHIEF
FORESTER & FIRE WARDEN

April 25, 2007

Martin Pastucha, Director
Department of Public Works
117 E. Colorado Blvd. 4th floor
P.O. Box 7115
Pasadena, CA 91109

Dear Mr. Pastucha:

HAHAMONGNA ANNEX

The Los Angeles County Fire Department has been an active participant in the process to develop a plan for the Hahamongna Watershed Park project since its inception in early 2006. The Department hosted one of the meetings at our Camp 2 facility located on the six acres that is a portion of the project. The Camp 2 facility sits directly adjacent to the abandoned seven acre U.S. Forest Service portion of the project.

At the present time, the Fire Department has two classrooms located at the Camp 2 facility that have the capacity to hold 25 and 40 attendees. These classrooms are utilized for Fire Department training and local community and governmental meetings. These classrooms are in high demand throughout the year. One of the main reasons that this facility is in such high demand is due to its centralized location for Fire Department members. The Fire Department classes hosted here draw students from across the County, State and Nation.

The proposed classrooms located in the existing buildings that were a portion of the U.S. Forest Service compound are of interest to the Fire Department. Frequently, we are unable to find adequate classroom space to host classes that we need to provide. Having the additional classroom space directly adjacent to one of the Fire Departments main training facilities would be of great benefit to all Fire Departments in Southern California. The 200-person capacity classroom is of the most interest to the Los Angeles County Fire Department. Trying to find a classroom with that capacity in a centralized location will significantly add to the ability to provide quality training to all Fire Departments in Southern California.

SERVING THE UNINCORPORATED AREAS OF LOS ANGELES COUNTY AND THE CITIES OF:

AGOURA HILLS
ARTESIA
AZUSA
BALDWIN PARK
BELL
BELL GARDENS
BELLFLOWER
BRADBURY

CALABASAS
CARSON
CERRITOS
CLAREMONT
COMMERCE
COVINA
CUDAHY

DIAMOND BAR
DUARTE
EL MONTE
GARDENA
GLENORA
HAWAIIAN GARDENS
HAWTHORNE

HIDDEN HILLS
HUNTINGTON PARK
INDUSTRY
INGLEWOOD
IRWINDALE
LA CANADA FLINTRIDGE
LA HABRA

LA MIRADA
LA PUENTE
LAKEWOOD
LANCASTER
LAWDALE
LOMITA
LYNWOOD

MALIBU
MAYWOOD
NORWALK
PALMDALE
PALOS VERDES ESTATES
PARAMOUNT
PICO RIVERA

POMONA
RANCHO PALOS VERDES
ROLLING HILLS
ROLLING HILLS ESTATES
ROSEMEAD
SAN DIMAS
SANTA CLARITA

SIGNAL HILL
SOUTH EL MONTE
SOUTH GATE
TEMPLE CITY
WALNUT
WEST HOLLYWOOD
WESTLAKE VILLAGE
WHITTIER

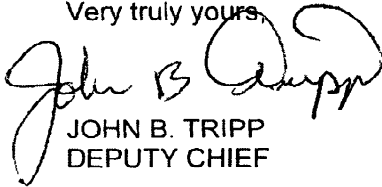
Martin Pastucha, Director
April 26, 2007
Page 2

In previous years, the County of Los Angeles Fire Department has co-sponsored classes with the Pasadena Fire Department who had to rent space at the convention center as they did not have access to classrooms of adequate size to accommodate classes. With the availability of the 200-person classroom that is proposed in the Hahamongna Annex, classroom space of adequate size would be available.

The County of Los Angeles Fire Department supports the proposed classrooms which includes the 200-person capacity classroom projected in the existing buildings.

If you have any questions, please contact Deputy Chief Michael L. Bryant, Special Operations Bureau, at (323) 881-2370.

Very truly yours,



JOHN B. TRIPP
DEPUTY CHIEF

JBT:nd