

When Pasadena College occupied the campus, there were more students and faculty on campus.

- 1300 students plus faculty and administrators
- Even with the different schools and organizations associated with WCIU, the current and projected campus population is less.

The following spreadsheet details the number of full-time and part-time staff in the various campus organizations as well as the students of the various schools.

Totals And Growth Projections

Weekdays

During a typical weekday, 210 students attend the various schools along with 170 full-time staff among the participating organizations and departments of WCIU.

- In addition, in a given week 171 part-time staff would work or volunteer an average of a day a week; so, about 34 would be on campus any particular day.
- The current daily total of staff and students is 414.
- During the next five years, we project this to grow to about 900.

(Also, see charts in Schools section.)

Sundays

Around 900 people attend the two churches located in different parts of the campus. Their roughly 400 cars at any one time can all be accommodated in designated lots. By 2008, Sunday attendance could grow to 1,950 assuming additional parking accommodations or arrangements.

(Also, see chart in Churches section.)

Parking Spaces

Parking spaces in the various lots on campus total 343. Across the street at 1605 Elizabeth Street, the U.S. Center for World Mission has made another 66 spaces available for use of campus churches on Sundays. That makes a total of 409 parking spaces on or adjacent to the campus on Sundays or for special evening or weekend events. Plans are under way to add almost an additional 100 parking spaces on campus and on street parking along the campus curbing can accommodate 100 more cars.

(Also, see parking section.)

Participating Organization	Weekday Staff			Campus	Daytime Students			Campus
	FT	PT	Park*	Resident	Students	Park	Drop-off	Resident
Abundant Life Community Church	3	2	3					
Center for Anabaptist Leadership	1	6	3					
Chinese Foundation Ministries	1			1				
Christian Educators Association Int'l.	8	6	10					
Christian Ministries Training Association	1	3	1					
Elijah Revolution	1		1					
Emmanuel Bible College		1						
Frontier Media		1		1				
Frontiers	1		1					
Global Spectrum		1						
Go Ye Fellowship		8	3					
Harvest Rock Church & Ministries	28	23	25					
Highland Community Church		2						
Hollywood Prayer Digest	2		2					
Institute of Japanese Studies		3						
Intercultural Mission Institute	2	6	3		50			50
International Interns	3	8	5					
Japan Helpline		1						
Julienne Bowman Office Services	1			1				
Lifeline International Christian Fellowship	1	1	1					
MIMEistry	4	2	3	2	30	5		25
Missionary Strategy Agency		1						
Mosaic Architects	1	4	3					
Mosaic Church	0	0	0					
Operation Ezekiel		1		1				
Pasadena International House of Prayer	1	2	1	1				
Paul Mission USA	1	1	1					
Periodico Inter D	2	2	2					
Positive Press	1		1					
Providence Mission Homes		2	1					
Reclaiming the Valley	2	8	3	1				
Servant Partners	2	1	2					
Travel International	1	1		1				
Trinity Press	2	1	2					
Unreached Nations, Inc.	2			2				
VersaTape	3	4	4					
WCIU	82	59	35	65				
WCIU - George Mueller Academy		1	1		15		8	7
WCIU - INSIGHT	1	3		4	20			20
WCIU - Judson International School	9	4	3	7	95		70	30
Wycliffe Bible Trans. - Chinese Mobilization	2	1	1					
Wycliffe Bible Trans. - Korean Relations	1	1		2				
Raw Totals	170	171	121	89	210	5	78	132
Fulltime Equivalent *	170	34	121	89	210	5	78	132
		Staff &		Campus	Parked		Student	
		Students		Resident	Cars		Drop-off	
Combined Daily Average (Staff & Students)		414		221	126		78	

* PT Staff average 1 day per week

Neighborhood & Housing At A Glance

The subject of this application is the campus proper, which is located between Howard and Elizabeth Streets, one block east of Hill Avenue.

Most of the people who work on campus either with WCIU or a participating organization live on or near the campus. Housing on campus is limited to two buildings, Aylward House and Townsend Hall. In addition, WCIU owns most of the residential properties immediately surrounding the campus.

Headings in this section:

- The Campus Proper - The Subject of This Application
- Off-Campus Housing - Not Included In This Application.
- On-Campus Housing
- Staff Housing
- Neighborhood Photos
- Neighborhood & Housing site plan

The Campus Proper - The Subject of This Application

The campus of William Carey International University is located one block north of Washington Boulevard and one block east of Hill Avenue in Pasadena. It is bounded:

- on the north by Elizabeth Street;
- on the west by Wesley Avenue;
- on the south by Howard Street; and
- on the east by the City Limit which runs along the back yards of residences along the west side of Oxford Street.

Off-Campus Housing - Not Included In This Application.

The site plan in this section shows the properties that WCIU owns in the neighborhood.

In addition to the campus proper, WCIU owns most of the residential properties immediately surrounding the campus.

- We own all but one of the houses bordering the east side;
- all but one property on Elizabeth across from the campus; and
- about half of the properties facing the campus on Wesley Avenue and Howard Street.
- WCIU also owns some properties on Topeka Street and Sierra Bonita Avenue.
- In fact, we own all of the properties on the east side of Sierra Bonita between Topeka and Achison and
- all of the properties east of them on University Drive and Oxford Street.

At the present time, we have no plans to use those properties other than for residences.

On-Campus Housing

On-Campus Housing is limited to two buildings, which were dormitories and also contained some apartments when Pasadena College owned and occupied the campus.

- On campus, we house many single students and staff from campus organizations and schools and international students from nearby schools.
- We also have guest housing for those attending conferences on campus.

Aylward House is the dormitory and primary guest housing.



Townsend Hall has a mixture of offices and guest rooms.



Both still contain apartments, which are occupied by couples or families who work or study on campus.

Aylward House

- 69 individual rooms (without private bath)
- 24 suites (2-4 rooms with bath)
- 9 apartments (efficiency, 1BR or 2 BR)
- 5 lounges
- dorm/guest housing offices
- totals - 160 rooms, including 299 beds

Townsend Hall

- 4 4-room suites – overflow guest rooms for conferences (16 rooms - 32 beds)
- 1 2-room suite – VIP guests
- 3 2BR apartments
- 1 lounge/conference room
- 18 suites of offices (4 rooms per suite)
- This is the same mixed use that existed in 1985, when the Fire Department required the installation of the fire alarm system.

Staff Housing

Most of the people who work on campus either with WCIU or a participating organization live on or near campus.

- This provides for a small town feeling in the middle of a metropolitan area.
- It also explains how our parking lots can adequately handle the cars that come to campus.
 - A simple formula of square footage to parking spaces or number of staff & students to parking spaces overlooks the unique advantage of having housing on or adjacent to the campus.



Neighborhood Photos

The accompanying aerial photos will give you a feel for our neighborhood.

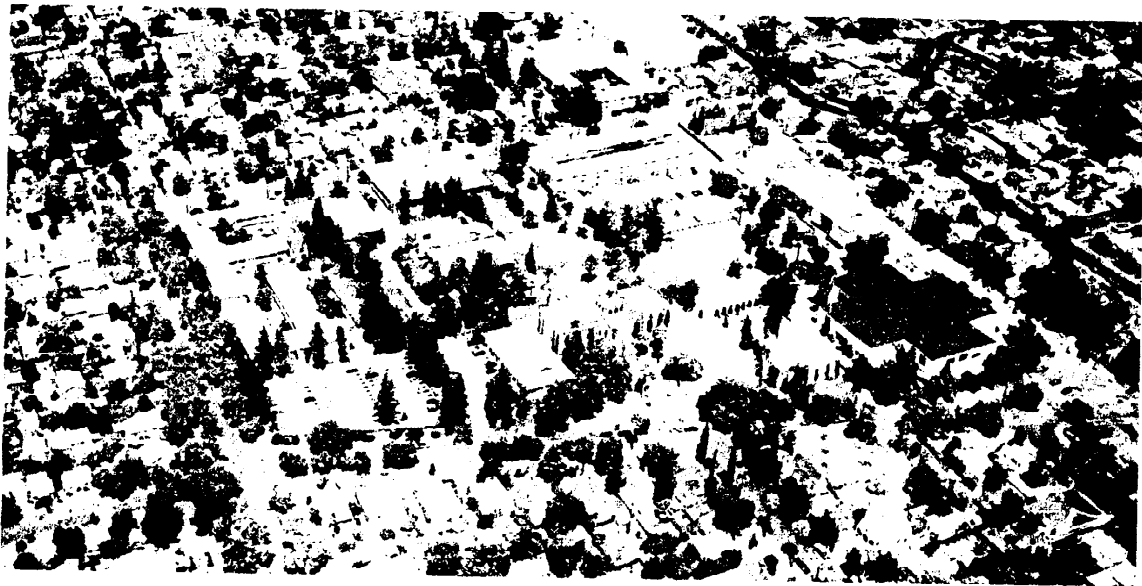
- One is looking south toward Washington Boulevard
- The other shows the residential neighborhood surrounding the campus.

Across Elizabeth Street from the subject site is the building and ball field currently owned by the Frontier Mission Fellowship, which WCIU is seriously considering buying to reunify the properties previously owned by Pasadena College.

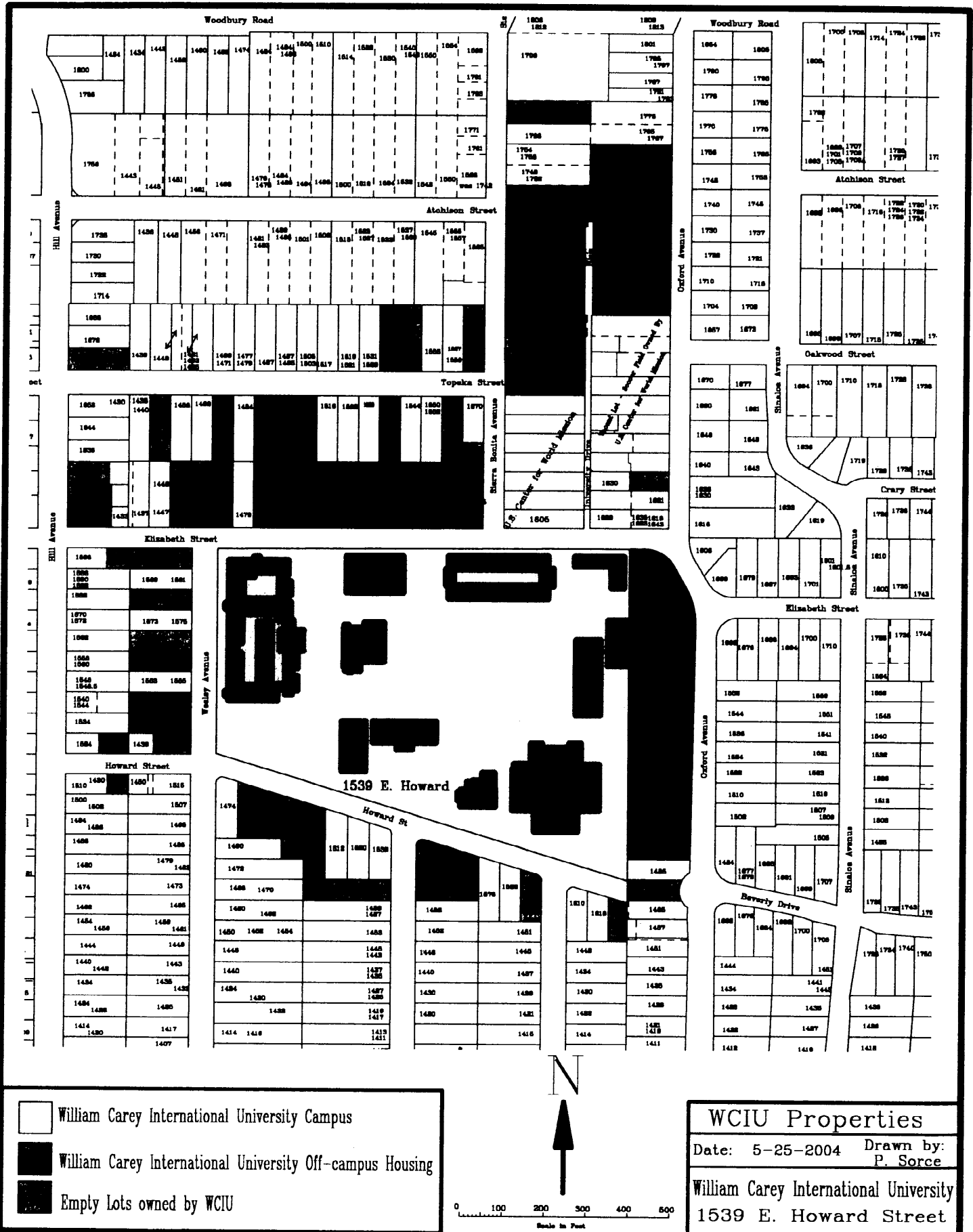
Aerial photos of campus and surrounding neighborhood.



▼ N View from the north looking south toward Washington Blvd.

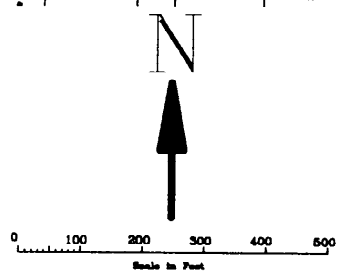


▲ S View from the southwest.



	William Carey International University Campus
	William Carey International University Off-campus Housing
	Empty Lots owned by WCIU

WCIU Properties	
Date: 5-25-2004	Drawn by: P. Sorce
William Carey International University 1539 E. Howard Street	



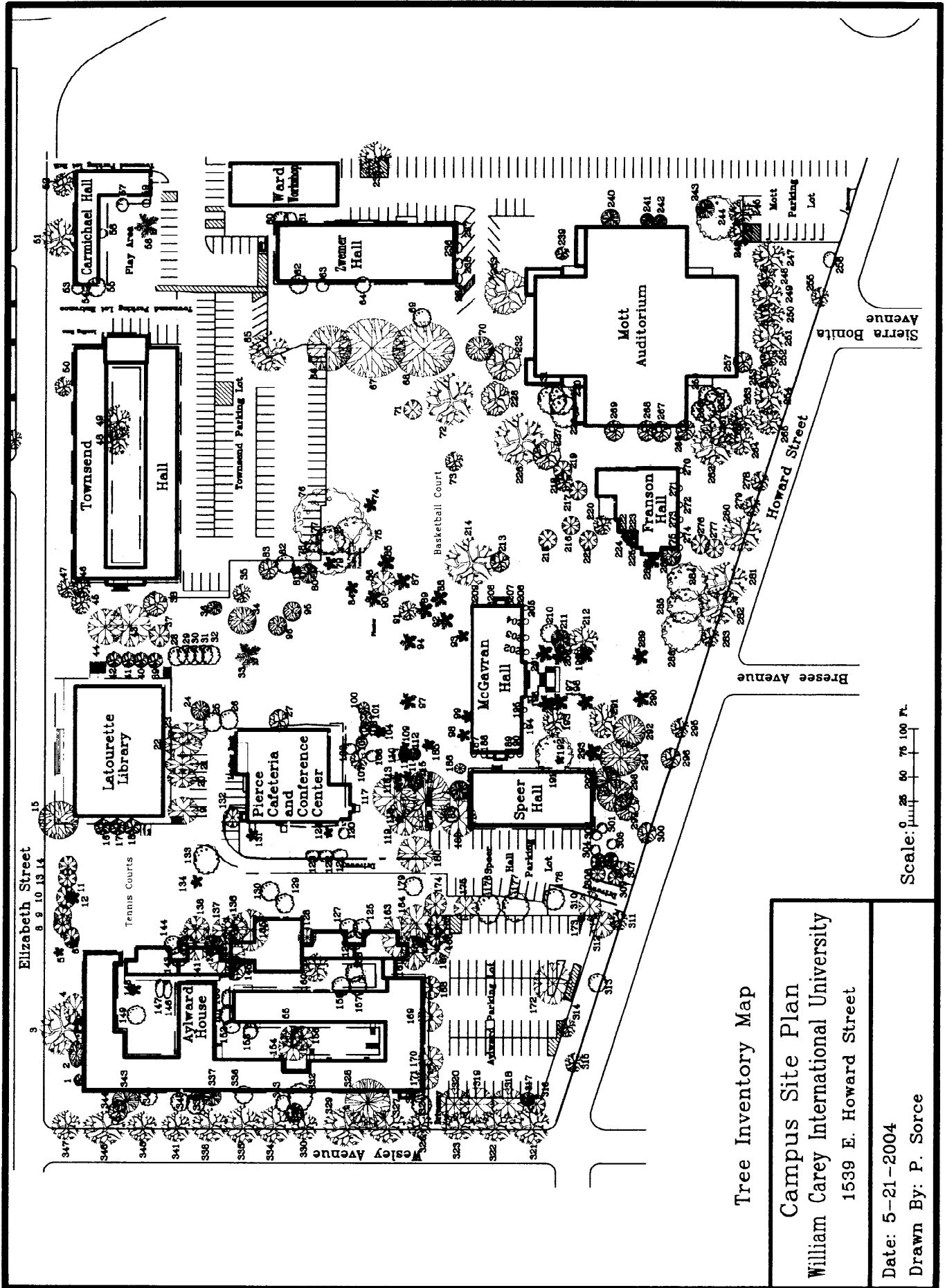


Open spaces on the campus contain a number of specimen trees and tree groupings.

Tree Inventory Map The accompanying site plan identifies these specimen trees within the campus boundaries.

Tree Inventory

- We have inventoried 347 trees.
- Two versions of the tree inventory are included.
 - Sorted by number
 - Sorted by name
- Our most common trees are:
 - Canary Island Pine
 - California Fan Palm
 - Carob
 - Italian Cypress



Tree Inventory Map

Campus Site Plan
 William Carey International University
 1539 E. Howard Street

Date: 5-21-2004

Drawn By: P. Sorce

Tree Inventory for 1539 E. Howard St.

Tree #	Common Name	Scientific Name	Circumference (inches)	Diameter of trunk or largest branch @ Breast Height (Inches)	Number of branches @ breast height	Diameter of Multi-branched Tree from branch to breast height. (inches)	Height (feet)	Spread (feet)	Street tree or public tree
1	Pineapple Guava	Feijoa sellowiana	31	9.9			20	17	
2	Hollywood Juniper	Juniperus chinensis 'torulosa'	71	22.6			30	30	
3	Chinese Elm	Ulmus parvifolia	45	14.3			45	58	
4	Carrotwood	Cupaniopsis anacardioides	36	11.5			30	35	
5	Mexican Fan Palm	Washingtonia robusta	58	18.5			60	10	
6	Mexican Fan Palm	Washingtonia robusta	64	20.4			30	15	
7	Alepo Pine	Pinus halepensis	32	10.2			45	25	
8	Canary Island Pine	Pinus Canariensis	68	21.6			40	21	
9	Canary Island Pine	Pinus Canariensis	65	20.7			55	28	
10	Canary Island Pine	Pinus Canariensis	55	17.5			52	28	
11	Mexican Fan Palm	Washingtonia robusta	65	20.7			35	15	
12	Mexican Fan Palm	Washingtonia robusta	59	18.8			30	15	
13	Alepo Pine	Pinus halepensis	36	11.5			37	20	
14	Alepo Pine	Pinus halepensis	38	12.1			35	20	
15	Fern Pine	Podocarpus gracilior	57	18.1			35	39	
16	Carrotwood	Cupaniopsis anacardioides	18	5.7			28	15	
17	Carrotwood	Cupaniopsis anacardioides	19	6.0			28	15	
18	Carrotwood	Cupaniopsis anacardioides	19	6.0			28	20	
19	Canary Island Pine	Pinus Canariensis	68	21.6			55	40	
20	Canary Island Pine	Pinus Canariensis	59	18.8			55	25	
21	Canary Island Pine	Pinus Canariensis	58	18.5			50	25	
22	Canary Island Pine	Pinus Canariensis	81	25.8			60	40	
23	Canary Island Pine	Pinus Canariensis	71	22.6			55	40	
24	Australian Bush Cherry	Syzygium paniculatum	43	13.7			35	26	
25	Evergreen Pear	Pyrus kawakamii	29	9.2			20	22	
26	Ornamental Flowering Plumb	Prunus atropurpea		3.0	13	26	18	19	
27	Sweet Pittosporum	Pittosporum undulatum	42	13.4			25	22	
28	Australian Bush Cherry	Syzygium paniculatum	30	9.5	2		35	23	
29	Australian Bush Cherry	Syzygium paniculatum	30	9.5			33	23	
30	Australian Bush Cherry	Syzygium paniculatum	26	8.3	2		35	23	
31	Australian Bush Cherry	Syzygium paniculatum	25	8.0	2		33	23	
32	Australian Bush Cherry	Syzygium paniculatum	39	12.4			31	23	

Tree Inventory for 1539 E. Howard St.

33	Canary Island date palm	Pheonix canariensis	85	27.1			30	28
34	Redwood	Sequoia sempervirens	85	27.1			50	31
35	Floss silk	Chorisia speciosa	42	13.4			24	21
36	Sweetgum	Liquidambar styraciflua	20	6.4			24	14
37	Japanese Black Pine	Pinus thunbergii	28	8.9			24	22
38	Carolina Laurel Cherry	Prunus caroliniana	42	13.4			26	26
39	Carrotwood	Cupaniopsis anacardioides	28	8.9	4	36	15	17
40	Carrotwood	Cupaniopsis anacardioides	16	5.1	4	24	15	13
41	Carrotwood	Cupaniopsis anacardioides	25	8.0	2	36	15	16
42	Carrotwood	Cupaniopsis anacardioides	21	6.7	4	38	15	18
43	Canary Island Pine	Pinus Canariensis	88	28.0			50	37
44	Canary Island Pine	Pinus Canariensis	97	30.9			50	43
45	Sweetgum	Liquidambar styraciflua	49	15.6			40	25
46	Sweetgum	Liquidambar styraciflua	51	16.2			34	20
47	Sweetgum	Liquidambar styraciflua	32	10.2			30	21
48	Holly Oak, Holm Oak, Pasadena Oak	Quercus ilex	44	14.0			26	37
49	Holly Oak, Holm Oak, Pasadena Oak	Quercus ilex	49	15.6			30	34
50	Olive	Olea europaea	52	16.6			20	20
51	English Walnut	Juglans regia	46	14.6			30	40
52	English Walnut	Juglans regia	34	10.8			20	25
53	Arborvitae	Thuja occidentalis	19	6.0	4	28	20	16
54	Italian Cypress	Cupressus sempervirens	35	11.1			40	7
55	Italian Cypress	Cupressus sempervirens	77	24.5			45	20
56	Italian Cypress	Cupressus sempervirens	50	15.9			28	10
57	Italian Cypress	Cupressus sempervirens	54	17.2			32	15
58	Canary Island Date Palm	Pheonix canariensis	91	29.0			28	25
59	Italian Cypress	Cupressus sempervirens	35	11.1			20	8
60	Pfitzer Juniper	Juniperus chinensis	28	8.9	2	54	22	18
61	Pfitzer Juniper	Juniperus chinensis	25	8.0			22	14
62	Pfitzer Juniper	Juniperus chinensis	21	6.7	2	28	25	20
63	Pfitzer Juniper	Juniperus chinensis	27	8.6	2	23	28	15
64	Pfitzer Juniper	Juniperus chinensis	22	7.0	2	31	25	18
65	Jacaranda	Jacaranda Juss	61	19.4	2	53	40	42
66	Tasmanian Blue Gum Eucalyptus	Eucalyptus globulus	146	46.5			47	45
67	Tasmanian Blue Gum Eucalyptus	Eucalyptus globulus	247	78.6			80	68
68	Tasmanian Blue Gum Eucalyptus	Eucalyptus globulus	135	43.0			65	63
69	Pfitzer Juniper	Juniperus chinensis	28	8.9	3	60	15	23
70	Tasmanian Blue Gum Eucalyptus	Eucalyptus globulus	92	29.3	2	58	67	54
71	River she-oak	Casuarina cunninghamiana	40	12.7			45	38
72	Chinese Elm	Ulmus parvifolia	58	18.5			40	60
73	Southern Magnolia	Magnolia grandiflora	65	20.7			35	33

Tree Inventory for 1539 E. Howard St.

74	Mexican Fan Palm	Washingtonia robusta	45	14.3				57	12
75	Redwood	Sequoia sempervirens	110	35.0				67	38
76	Deodar Cedar	Cedrus deodara	103	32.8				51	73
77	Deodar Cedar	Cedrus deodara	55	17.5				55	35
78	Deodar Cedar	Cedrus deodara	74	23.6				60	50
79	California Fan Palm	Washingtonia filifera	93	29.6				52	15
80	Bur (Mossycup) Oak	Quercus macrocarpa Michx.	50	15.9				30	40
81	California Fan Palm	Washingtonia filifera	103	32.8				50	12
82	Pecan	Carya illinoensis	42	13.4				40	32
83	Modesto Ash	Fraxinus velutina 'Modesto'	46	14.6				20	33
84	California Fan Palm	Washingtonia filifera	92	29.3				55	15
85	California Fan Palm	Washingtonia filifera	97	30.9				47	15
86	Deodar Cedar	Cedrus deodara	86	27.4				60	43
87	California Fan Palm	Washingtonia filifera	102	32.5				50	15
88	Senegal Date Palm	Phoenix reclinata	28	8.9		5	7' Cluster	25	25
89	California Fan Palm	Washingtonia filifera	92	29.3				48	15
90	Senegal Date Palm	Phoenix reclinata	30	9.5		6	6' Cluster	30	29
91	Crape myrtle	Lagerstroemia indica	18.5	5.9		5		25	29
92	California Fan Palm	Washingtonia filifera	82	26.1				50	15
93	California Fan Palm	Washingtonia filifera	76	24.2				51	15
94	Canary Island date palm	Phoenix canariensis	85	27.1				53	24
95	Orange	Rutaceae	49	15.6				15	24
96	Orange	Rutaceae	24	7.6		2	24	13	17
97	Canary Island date palm	Phoenix canariensis	69	22.0				48	22
98	California Fan Palm	Washingtonia filifera	91	29.0				50	12
99	California Fan Palm	Washingtonia filifera	80	25.5				43	12
100	Leylandy Cypress	X Cupressocyparis leylandii	53	16.9				48	24
101	Leylandy Cypress	X Cupressocyparis leylandii	54	17.2				44	18
102	Xylosma	Xylosma congestum	22	7.0				15	17
103	Xylosma	Xylosma congestum	26	8.3				20	24
104	California Fan Palm	Washingtonia filifera	95	30.2				48	15
105	Tangerine		22	7.0		5	36	15	25
106	Xylosma	Xylosma congestum	22	7.0				25	15
107	Loquat	Eriobotrya japonica	24	7.6				24	23
108	Tangerine		27	8.6		9	47	16	15
109	California Fan Palm	Washingtonia filifera	70	22.3				64	12
110	Mock Orange	Pittosporum tobira	15	4.8		5	37	7	18
111	Leylandy Cypress	X Cupressocyparis leylandii	25	8.0				47	15
112	Leylandy Cypress	X Cupressocyparis leylandii	22	7.0		2	23	18	15
113	California Fan Palm	Washingtonia filifera	85	27.1				68	15
114	California Fan Palm	Washingtonia filifera	76	24.2				66	15

Tree Inventory for 1539 E. Howard St.

115	Sweet Pittosporum	Pittosporum undulatum	24	7.6	3	32	30	28
116	California Fan Palm	Washingtonia filifera	36	11.5			12	10
117	Alepo Pine	Pinus halepensis	119	37.9			75	55
118	California Fan Palm	Washingtonia filifera	67	21.3			24	15
119	Deodar Cedar	Cedrus deodara	76	24.2			71	45
120	Mock Orange	Pittosporum tobira	33	10.5			18	33
121	Evergreen Pear	Pyrus kawakamii	37	11.8			18	21
122	Evergreen Pear	Pyrus kawakamii	26	8.3			16	24
123	Evergreen Pear	Pyrus kawakamii	27	8.6	3	46	16	17
124	Mexican Fan Palm	Washingtonia robusta	49	15.6			54	15
125	Sweetgum	Liquidambar styraciflua	37	11.8			47	20
126	Sweetgum	Liquidambar styraciflua	36	11.5			44	20
127	Sweetgum	Liquidambar styraciflua	25	8.0			44	20
128	Canary Island Pine	Pinus Canariensis	77	24.5			60	33
129	Evergreen Pear	Pyrus kawakamii	43	13.7			18	35
130	Evergreen Pear	Pyrus kawakamii	58	18.5			20	40
131	California Fan Palm	Washingtonia filifera	75	23.9			38	15
132	Canary Island Pine	Pinus Canariensis	48	15.3			38	19
133	Evergreen Pear	Pyrus kawakamii	34	10.8			18	32
134	California Fan Palm	Washingtonia filifera	56	17.8			20	12
135	Canary Island Pine	Pinus Canariensis	77	24.5			62	45
136	Canary Island Pine	Pinus Canariensis	67	21.3			62	19
137	Canary Island Pine	Pinus Canariensis	84	26.7			64	35
138	Canary Island Pine	Pinus Canariensis	72	22.9			60	41
139	Canary Island Pine	Pinus Canariensis	48	15.3			58	40
140	Canary Island Pine	Pinus Canariensis	43	13.7			58	16
141	Canary Island Pine	Pinus Canariensis	98	31.2			63	40
142	Sweetgum	Liquidambar styraciflua	22	7.0			38	15
143	Sweetgum	Liquidambar styraciflua	26	8.3			39	15
144	Sweetgum	Liquidambar styraciflua	34	10.8			42	20
145	Ginkgo	Ginkgo Biloba	37	11.8			44	29
146	Japanese Maple	Acer palmatum	36	11.5			18	29
147	Japanese Maple	Acer palmatum	26	8.3	2	17	14	29
148	California Fan Palm	Washingtonia filifera	55	17.5			10	13
149	Evergreen Pear	Pyrus kawakamii	26	8.3	2	50	12	23
150	Bottlebrush	Callistemon viminalis	30	9.5			22	19
151	Bottlebrush	Callistemon viminalis	30	9.5			23	21
152	Bottlebrush	Callistemon viminalis	24	7.6			22	28
153	Sweetgum	Liquidambar styraciflua	41	13.1			46	25
154	Redwood	Sequoia sempervirens	43	13.7			56	34
155	Redwood	Sequoia sempervirens	71	22.6			56	20

Tree Inventory for 1539 E. Howard St.

156	Redwood	Sequoia sempervirens	64	20.4				56	18
157	Carrotwood	Cupaniopsis anacardioides	24	7.6				36	45
158	Carrotwood	Cupaniopsis anacardioides	24	7.6				36	25
159	Carrotwood	Cupaniopsis anacardioides	36	11.5				36	23
160	Cork Oak	Quercus Suber	70	22.3				42	47
161	Canary Island Pine	Pinus Canariensis	70	22.3				75	35
162	California Fan Palm	Washingtonia filifera	80	25.5				37	17
163	Canary Island Pine	Pinus Canariensis	57	18.1				70	44
164	Canary Island Pine	Pinus Canariensis	87	27.7				64	34
165	Canary Island Pine	Pinus Canariensis	74	23.6				74	42
166	Canary Island Pine	Pinus Canariensis	67	21.3				78	25
167	Canary Island Pine	Pinus Canariensis	60	19.1				78	32
168	Canary Island Pine	Pinus Canariensis	64	20.4				65	24
169	Canary Island Pine	Pinus Canariensis	70	22.3				69	33
170	Canary Island Pine	Pinus Canariensis	67	21.3				75	30
171	Canary Island Pine	Pinus Canariensis	92	29.3				80	29
172	Canary Island Pine	Pinus Canariensis	84	26.7				80	43
173	Canary Island Pine	Pinus Canariensis	50	15.9				70	11
174	Canary Island Pine	Pinus Canariensis	65	20.7				67	27
175	Alepo Pine	Pinus halepensis	25	8.0				28	16
176	Evergreen Pear	Pyrus kawakamii	72	22.9	2	47		26	26
177	Evergreen Pear	Pyrus kawakamii	36	11.5	2	81		22	26
178	Evergreen Pear	Pyrus kawakamii	49	15.6	2	26		23	34
179	Evergreen Pear	Pyrus kawakamii	26	8.3	3	35		24	18
180	Deodar Cedar	Cedrus deodara	100	31.8				50	62
181	Brazilian Pepper	Schinus terebinthifolius	83	26.4	6	233		18	54
182	Catalina Cherry	Prunus lyonii	23	7.3				34	20
183	Deodar Cedar	Cedrus deodara	69	22.0				54	34
184	Drooping Melaluka	Melaluka armillarias	48	15.3				31	20
185	California Fan Palm	Washingtonia filifera	88	28.0				60	10
186	Lombardy Poplar	Populus nigra 'Italica'	66	21.0				39	19
187	Italian Cypress	Cupressus sempervirens	23	7.3				35	4
188	Italian Cypress	Cupressus sempervirens	25	8.0				33	4
189	Italian Cypress	Cupressus sempervirens	24	7.6				35	4
190	Italian Cypress	Cupressus sempervirens	25	8.0				30	4
191	Deodar Cedar	Cedrus deodara	84	26.7				60	51
192	Sego Palm	Cycas revoluta	34	10.8				10	6
193	Jacaranda	Jacaranda Juss	49	15.6				28	47
194	Italian Cypress	Cupressus sempervirens	39	12.4	3	26		30	12
195	Italian Cypress	Cupressus sempervirens	53	16.9				30	9
196	California Fan Palm	Washingtonia filifera	92	29.3				45	9

Tree Inventory for 1539 E. Howard St.

197	California Fan Palm	Washingtonia filifera	87	27.7				50	7
198	California Fan Palm	Washingtonia filifera	90	28.6				44	7
199	California Fan Palm	Washingtonia filifera	86	27.4				45	7
200	California Fan Palm	Washingtonia filifera	92	29.3				29	6
201	California Fan Palm	Washingtonia filifera	85	27.1				32	6
202	Italian Cypress	Cupressus sempervirens	45	14.3				28	10
203	Italian Cypress	Cupressus sempervirens	51	16.2				28	12
204	Italian Cypress	Cupressus sempervirens	37	11.8				28	8
205	Italian Cypress	Cupressus sempervirens	31	9.9				28	10
206	Italian Cypress	Cupressus sempervirens		12.0				29	4
207	Italian Cypress	Cupressus sempervirens		9.0				29	4
208	Italian Cypress	Cupressus sempervirens		9.0				29	4
209	Italian Cypress	Cupressus sempervirens		9.0				29	4
210	Orange	Rutaceae	21	6.7	3		57	15	20
211	Silk Oak	Grevillea robusta	91	29.0				42	34
212	Jacaranda	Jacaranda Juss	62	19.7	2		68	27	53
213	Silk Oak	Grevillea robusta	79	25.1				28	28
214	Camphor	Cinnamomum camphora	69	22.0				26	43
215	Redwood	Sequoia sempervirens	35	11.1				22	12
216	Redwood	Sequoia sempervirens	59	18.8				38	16
217	Redwood	Sequoia sempervirens	89	28.3				41	28
218	Bur (Mossycup) Oak	Quercus macrocarpa Michx.	36	11.5				20	33
219	Ginko	Ginko Biloba	35	11.1				25	23
220	Floss Silk	Chorisia speciosa	54	17.2				36	25
221	Redwood	Sequoia sempervirens	57	18.1				34	22
222	Chinese Windmill Palm	Trachycarpus fortunei	25	8.0				14	8
223	Chinese Windmill Palm	Trachycarpus fortunei	21	6.7				14	7
224	Mexican Fan Palm	Washingtonia robusta	22	7.0				8	5
225	Chinese Windmill Palm	Trachycarpus fortunei	45	14.3				50	8
226	California Live Oak	Quercus agrifolia Nee	110	35.0	3		68	30	68
227	Sweet Pittosporum	Pittosporum undulatum	38	12.1	2		24	30	29
228	Green Ash	Fraxinus pennsylvanica	50	15.9				38	37
229	Lemon Eukalyptus	Eucalyptus citriodora	53	16.9			0	50	40
230	Lemon Eukalyptus	Eucalyptus citriodora	55	17.5				50	40
231	Lemon Eukalyptus	Eucalyptus citriodora	59	18.8				50	30
232	Carob	Ceratonia siliqua	89	28.3				30	37
233	Carob	Ceratonia siliqua	155	49.3				40	49
234	Crapemyrtle	Lagerstroemia indica	8	2.5	6		45	11	8
235	Crapemyrtle	Lagerstroemia indica		2.5	5		40	7	6
236	Crapemyrtle	Lagerstroemia indica		3.0	7		53	9	10
237	Crapemyrtle	Lagerstroemia indica	15	4.8	5		67	13	17

Tree Inventory for 1539 E. Howard St.

238	Chinese Elm	Ulmus parvifolia	28	8.9	2	34	24	30
239	California Live Oak	Quercus agrifolia Nee	23	7.3			17	26
240	Sweet Pittosporum	Pittosporum undulatum	42	13.4			25	26
241	Sweet Pittosporum	Pittosporum undulatum	44	14.0			26	14
242	Sweet Pittosporum	Pittosporum undulatum	44	14.0			24	20
243	Carolina Laurel Cherry	Prunus caroliniana	24	7.6	3	47	28	28
244	California Live Oak	Quercus agrifolia Nee	80	25.5			30	47
245	Carob	Ceratonia siliqua	57	18.1			24	24
246	Carob	Ceratonia siliqua	70	22.3			27	30
247	Carob	Ceratonia siliqua	109	34.7	2	61	25	22
248	Carob	Ceratonia siliqua	108	34.4			26	40
249	Carob	Ceratonia siliqua	54	17.2			22	23
250	Carob	Ceratonia siliqua	70	22.3			20	27
251	Carob	Ceratonia siliqua	72	22.9			19	30
252	Carob	Ceratonia siliqua	22	7.0			9	14
253	Carob	Ceratonia siliqua	71	22.6			23	36
254	Carob	Ceratonia siliqua	70	22.3			25	42
255	Carob	Ceratonia siliqua	74	23.6			23	30 yes
256	Privet	Ligustrum lucidum	14	4.5			17	15 Yes
257	Sweet Pittosporum	Pittosporum undulatum	32	10.2			16	12
258	Lemon Eukalyptus	Eucalyptus citriodora	75	23.9			48	25
259	Lemon Eukalyptus	Eucalyptus citriodora	62	19.7			48	32
260	Lemon Eukalyptus	Eucalyptus citriodora	35	11.1			48	8
261	California Live Oak	Quercus agrifolia Nee	58	18.5			16	20
262	California Live Oak	Quercus agrifolia Nee	82	26.1			27	45
263	Carob	Ceratonia siliqua	109	34.7			24	36
264	Carob	Ceratonia siliqua	114	36.3			24	37
265	Carob	Ceratonia siliqua	67	21.3			18	33
266	Sweet Pittosporum	Pittosporum undulatum	32	10.2	2	15	15	14
267	Sweet Pittosporum	Pittosporum undulatum	18	5.7	3	31	14	12
268	Sweet Pittosporum	Pittosporum undulatum	36	11.5			13	15
269	Sweet Pittosporum	Pittosporum undulatum	20	6.4	2	17	14	20
270	Italian Cypress	Cupressus sempervirens		12.0			18	6
271	Italian Cypress	Cupressus sempervirens		12.0			17	6
272	Italian Cypress	Cupressus sempervirens		12.0			17	6
273	Italian Cypress	Cupressus sempervirens		12.0			17	6
274	Italian Cypress	Cupressus sempervirens		12.0			16	6
275	Italian Cypress	Cupressus sempervirens		12.0			17	6
276	River she-oak	Casuarina cunninghamiana	60	19.1			40	26
277	River she-oak	Casuarina cunninghamiana	57	18.1			37	57
278	Carob	Ceratonia siliqua	28	8.9			12	23 Yes

Tree Inventory for 1539 E. Howard St.

279	Carob	Ceratonia siliqua	53	16.9				18	18	Yes
280	Carob	Ceratonia siliqua	81	25.8				19	48	Yes
281	Carob	Ceratonia siliqua	68	21.6				19	36	Yes
282	Carob	Ceratonia siliqua	47	15.0				18	46	Yes
283	Carob	Ceratonia siliqua	79	25.1				20	50	Yes
284	Chinese Elm	Ulmus parvifolia	63	20.1				35	45	
285	Chinese Elm	Ulmus parvifolia	54	17.2				30	51	
286	California Live Oak	Quercus agrifolia Nee	103	32.8				45	80	
287	Indian Laurel Fig	Ficus microcarpa	63	20.1	2			30	29	
288	Mexican Fan Palm	Washingtonia robusta	53	16.9				60	8	
289	California Fan Palm	Washingtonia filifera	82	26.1				50	8	
290	California Fan Palm	Washingtonia filifera	97	30.9				48	8	
291	Jacaranda	Jacaranda Juss	36	11.5				26	28	
292	Deodor Cedar	Cedrus deodara	83	26.4				53	47	
293	Canary Island date palm	Phoenix canariensis	103	32.8				18	32	
294	Deodor Cedar	Cedrus deodara	72	22.9				47	45	
295	Carob	Ceratonia siliqua	30	9.5				13	18	
296	Carrotwood	Cupaniopsis anacardioides	24	7.6				15	24	
297	Australian Tee Tree	Leptospermum laevigatum	46	14.6	5			15	42	
298	California Sycamore	Platanus racemosa	83	26.4				58	60	
299	Deodor Cedar	Cedrus deodara	91	29.0				59	70	
300	Carob	Ceratonia siliqua	42	13.4				16	28	
301	Evergreen Pear	Pyrus kawakamii	20	6.4	2			15	28	
302	Evergreen Pear	Pyrus kawakamii	22	7.0	2			14	28	
303	Evergreen Pear	Pyrus kawakamii	26	8.3				15	31	
304	Evergreen Pear	Pyrus kawakamii	21	6.7	2			16	38	
305	Canary Island Pine	Pinus Canariensis	59	18.8				61	75	
306	Canary Island Pine	Pinus Canariensis	65	20.7				39	73	
307	Canary Island Pine	Pinus Canariensis	49	15.6				62	57	
308	Canary Island Pine	Pinus Canariensis	62	19.7				56	60	
309	Canary Island Pine	Pinus Canariensis	29	9.2				59	55	
310	Canary Island Pine	Pinus Canariensis	76	24.2				62	75	
311	Carob	Ceratonia siliqua	48	15.3				16	28	yes
312	Canary Island Pine	Pinus Canariensis	97	30.9				50	70	
313	Privet	Ligustrum lucidum	27	8.6				13	17	Yes
314	Chinese Elm	Ulmus parvifolia		10.0	2			15	20	
315	Carob	Ceratonia siliqua	86	27.4				26	51	Yes
316	Alepo Pine	Pinus halepensis	35	11.1				25	16	
317	Pecan	Carya illinoensis	41	13.1				19	32	
318	Canary Island Pine	Pinus Canariensis	68	21.6				53	37	
319	Canary Island Pine	Pinus Canariensis	77	24.5				58	22	

Tree Inventory for 1539 E. Howard St.

320	Canary Island Pine	Pinus Canariensis	87	27.7			62	35
321	Camphor	Cinnamomum camphora	40	12.7			19	26 Yes
322	Camphor	Cinnamomum camphora	60	19.1			19	32 Yes
323	Camphor	Cinnamomum camphora	42	13.4			19	31 Yes
324	Jacaranda	Jacaranda Juss	49	15.6			22	30
325	Hollywood Juniper	Juniperus chinensis 'torulosa'	34	10.8			18	22
326	Camphor	Cinnamomum camphora	54	17.2			20	32 Yes
327	Camphor	Cinnamomum camphora	67	21.3			20	36 Yes
328	Chinese Elm	Ulmus parvifolia	67	21.3			28	26
329	Camphor	Cinnamomum camphora	63	20.1			20	22 Yes
330	Camphor	Cinnamomum camphora	71	22.6			21	43 Yes
331	Hollywood Juniper	Juniperus chinensis 'torulosa'	63	20.1			20	29
332	Diamond Pittosporum	Pittosporum rhombifolium	24	7.6	2		17	16
333	Olive	Olea europaea	40	12.7			20	25
334	Camphor	Cinnamomum camphora	39	12.4			20	20 Yes
335	Camphor	Cinnamomum camphora	53	16.9			18	15 Yes
336	Australian Bush Cherry	Syzygium paniculatum	43	13.7			26	31
337	Sweet Pittosporum	Pittosporum undulatum	50	15.9	2		25	35
338	Camphor	Cinnamomum camphora	65	20.7			20	48 Yes
339	Crapemyrtle	Lagerstroemia indica	11	3.5	13		18	25
340	Crapemyrtle	Lagerstroemia indica	7	2.2	9		15	13
341	Camphor	Cinnamomum camphora	57	18.1			16	32 Yes
342	Orchid Tree	Bauhinia variegata	23	7.3	3		18	17
343	Sweet Pittosporum	Pittosporum undulatum	32	10.2			19	25
344	olive	Olea europaea	61	19.4			20	30
345	Camphor	Cinnamomum camphora	51	16.2			20	47 Yes
346	Camphor	Cinnamomum camphora	70	22.3			23	40 Yes
347	Camphor	Cinnamomum camphora	79	25.1			22	55 Yes

WCIU Master Plan Tree Inventory - by Common Name

6/8/2003

Tree Inventory for 1539 E. Howard St. (Sorted by Common Name)

Tree #	Common Name	Scientific Name	Circumference (inches)	Diameter of trunk or largest branch @ Breast Height (inches)	Number of branches @ breast height	Diameter of Height (feet)	Spread (feet)	Street tree or public tree
7	Alepo Pine	<i>Pinus halepensis</i>	32	10.2		45	25	
13	Alepo Pine	<i>Pinus halepensis</i>	36	11.5		37	20	
14	Alepo Pine	<i>Pinus halepensis</i>	38	12.1		35	20	
117	Alepo Pine	<i>Pinus halepensis</i>	119	37.9		75	55	
175	Alepo Pine	<i>Pinus halepensis</i>	25	8.0		28	16	
316	Alepo Pine	<i>Pinus halepensis</i>	35	11.1		25	16	
53	Arborvitae	<i>Thuja occidentalis</i>	19	6.0	4	20	16	
24	Australian Bush Cherry	<i>Syzygium paniculatum</i>	43	13.7		35	26	
28	Australian Bush Cherry	<i>Syzygium paniculatum</i>	30	9.5	2	35	23	
29	Australian Bush Cherry	<i>Syzygium paniculatum</i>	30	9.5		33	23	
30	Australian Bush Cherry	<i>Syzygium paniculatum</i>	26	8.3	2	35	23	
31	Australian Bush Cherry	<i>Syzygium paniculatum</i>	25	8.0	2	33	23	
32	Australian Bush Cherry	<i>Syzygium paniculatum</i>	39	12.4		31	23	
336	Australian Bush Cherry	<i>Syzygium paniculatum</i>	43	13.7		26	31	
297	Australian Tee Tree	<i>Leptospermum laevigatum</i>	46	14.6	5	15	42	
150	Bottlebrush	<i>Callistemon viminalis</i>	30	9.5		22	19	
151	Bottlebrush	<i>Callistemon viminalis</i>	30	9.5		23	21	
152	Bottlebrush	<i>Callistemon viminalis</i>	24	7.6		22	28	
181	Brazilian Pepper	<i>Schinus terebinthifolius</i>	83	26.4	6	18	54	
80	Bur (Mossycup) Oak	<i>Quercus macrocarpa Michx.</i>	50	15.9		30	40	
218	Bur (Mossycup) Oak	<i>Quercus macrocarpa Michx.</i>	36	11.5		20	33	
79	California Fan Palm	<i>Washingtonia filifera</i>	93	29.6		52	15	
81	California Fan Palm	<i>Washingtonia filifera</i>	103	32.8		50	12	
84	California Fan Palm	<i>Washingtonia filifera</i>	92	29.3		55	15	
85	California Fan Palm	<i>Washingtonia filifera</i>	97	30.9		47	15	
87	California Fan Palm	<i>Washingtonia filifera</i>	102	32.5		50	15	
89	California Fan Palm	<i>Washingtonia filifera</i>	92	29.3		48	15	
92	California Fan Palm	<i>Washingtonia filifera</i>	82	26.1		50	15	
93	California Fan Palm	<i>Washingtonia filifera</i>	76	24.2		51	15	
98	California Fan Palm	<i>Washingtonia filifera</i>	91	29.0		50	12	
99	California Fan Palm	<i>Washingtonia filifera</i>	80	25.5		43	12	
104	California Fan Palm	<i>Washingtonia filifera</i>	95	30.2		48	15	