

# Agenda Report

TO: CITY COUNCIL

DATE: MARCH 13, 2006

FROM: CYNTHIA J. KURTZ, CITY MANAGER

SUBJECT: PRELIMINARY PLAN REVIEW FOR THE PROPOSED CONSTRUCTION OF A 94,645 GROSS SQUARE FOOT BUILDING (CAHILL CENTER FOR ASTRONOMY AND ASTROPHYSICS) AT 1200 E. CALIFORNIA BOULEVARD

## RECOMMENDATION

This report is being provided for information only at this time.

## BACKGROUND

This project summary is being presented to the City Council per Preliminary Plan Review (PPR) guidelines, which call for staff to present projects of community-wide significance to the City Council for informational purposes. The California Institute of Technology (Caltech) has submitted a proposal for the construction of a new academic building located on the south side of E. California Boulevard between S. Wilson Avenue and Arden Road.

## PROJECT DESCRIPTION

The specific site is a 43,200-square foot (.99 acre) parcel that is part of the Caltech campus. Currently, on the project site is an existing parking lot with 68 spaces. The proposed project is new construction of a 94,645-square foot office and laboratory building within the Caltech campus. The height of the proposed building is 3 stories, 40 feet 6-inches, with appurtenance projections up to 65 feet high. The setback of the new structure would match the Keith Spalding building at the southeast corner of California Boulevard and Wilson Avenue.

## REVIEW OF DISCRETIONARY ACTIONS

The purpose of the PPR process is to identify site-specific requirements from the various City departments to give applicants direction regarding their projects. This report is not intended to represent a staff recommendation. Staff reviewed the proposed project and determined that the following actions would be necessary:

- 1) Master Development Plan: The Caltech Master Plan approved and adopted by the City Council in 1999 governs future development for this campus. According to provisions of the Caltech Master Plan, the building envelope on the south side of California Boulevard frontage and north of the playing fields may be up to 150,000 square feet of new building space. The

proposed building of 97,645 square feet is consistent and within the Master Plan development intensity.

The proposed building is of a contemporary design. The design guidelines in the current master plan promote a unified image for the campus. An amendment in progress to the master plan, however, proposes a more innovative approach to new architecture in the campus. This approach is consistent with the City-wide Design Principles in the Land Use Element of the General Plan. The proposed building is designed by Thom Mayne of Morphosis, a recipient of the Pritzker Prize, the most prestigious international award in architecture.

2) **Environmental Review:** According to provisions of the Master Plan, an Initial Study will be prepared for all proposed facilities exceeding 70,000 square feet of gross floor area. In this case, an Initial Environmental Study, including required technical reports, will be prepared to determine if the proposal would result in any potential significant impacts.

3) **Design Review:** Projects over 70,000 square feet are subject to review by the Design Commission. Design review is a three-step procedure: 1) a preliminary meeting with staff to review the project and site plans and elevations, to discuss the design guidelines, and to identify additional information that may be needed for a complete application; 2) Concept (schematic-level) design review, and 3) Final design review. Concept design review is a noticed public hearing before the Design Commission. Advisory 50% Design Review may also be required as a condition of Concept Design approval. This evaluation, conducted by the Design Commission monitors the design development of the project and resolution of conditions of concept approval.

**Timeline:** The following timeline outlines the major steps in the process.

<b>Date</b>	<b>Activity</b>
1/19/2006	Application submitted for Design Review
30 days	Review application for completeness
3/13/2006	Preliminary Plan Review presentation to City Council
February / March 2006	Initial Environmental Study and Environmental Determination <ul style="list-style-type: none"> <li>• Review of submitted studies, i.e. air quality analysis</li> <li>• Prepare draft environmental documents</li> <li>• Circulate environmental documents to pertinent sections/departments for review and comments</li> <li>• Finalize environmental document and make environmental determination</li> </ul>
April 2006	Design Commission Review <ul style="list-style-type: none"> <li>• Post the environmental document (negative declaration or mitigated negative declaration) at the L.A. County Recorder's office. If an EIR is required the timetable will expand by several months.</li> <li>• 20-day public review for the environmental determination</li> <li>• Prepare, mail, and post notice of public hearing</li> <li>• Preparation of the Staff Report</li> <li>• Design Commission Public hearing</li> <li>• 10-day appeal period</li> <li>• Decision becomes effective after the 10-day appeal period</li> </ul>

**FISCAL IMPACT**

The applicant will be required to pay fees for Design Review and the processing of environmental documents for the project which cover staff time. The project will also generate plan check and permit fees, in an amount that cannot be determined at this time.

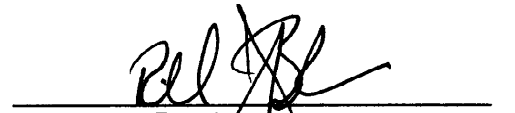
Respectfully submitted,

  
CYNTHIA J. KURTZ  
CITY MANAGER

Prepared by:

  
Lanny Woo  
Associate Planner

Approved by:

  
Richard J. Bruckner  
Director of Planning and Development

Attachment:

1. Proposed Plans for the Cahill Center for Astronomy and Astrophysics

**Attachment 1**



# CAHILL CENTER FOR ASTRONOMY AND ASTROPHYSICS

ARCHITECT: **mCiphous<sup>®</sup>**  
 201 E. Colorado Avenue  
 Pasadena, CA 91105  
 TEL: 818-796-1277  
 FAX: 818-796-1370

SCALE:

DATE	SYMBOL	DESCRIPTION
1/22/00		ISSUED FOR PERMIT
1/22/00		ISSUED FOR PERMIT
1/22/00		ISSUED FOR PERMIT
1/22/00		ISSUED FOR PERMIT
1/22/00		ISSUED FOR PERMIT
1/22/00		ISSUED FOR PERMIT
1/22/00		ISSUED FOR PERMIT
1/22/00		ISSUED FOR PERMIT
1/22/00		ISSUED FOR PERMIT
1/22/00		ISSUED FOR PERMIT



PROJECT NUMBER: **A-020.0**  
 PROJECT NAME: **CAHILL CENTER FOR ASTRONOMY AND ASTROPHYSICS**  
 PROJECT LOCATION: **1300 EAST CALIFORNIA AVENUE, PASADENA, CALIFORNIA 91105**  
 PROJECT NUMBER: **CP 469**  
 PROJECT NAME: **SCHEMATIC DESIGN**  
 PROJECT LOCATION: **SCALE: 1/8" = 1'-0"**

**CALTECH**

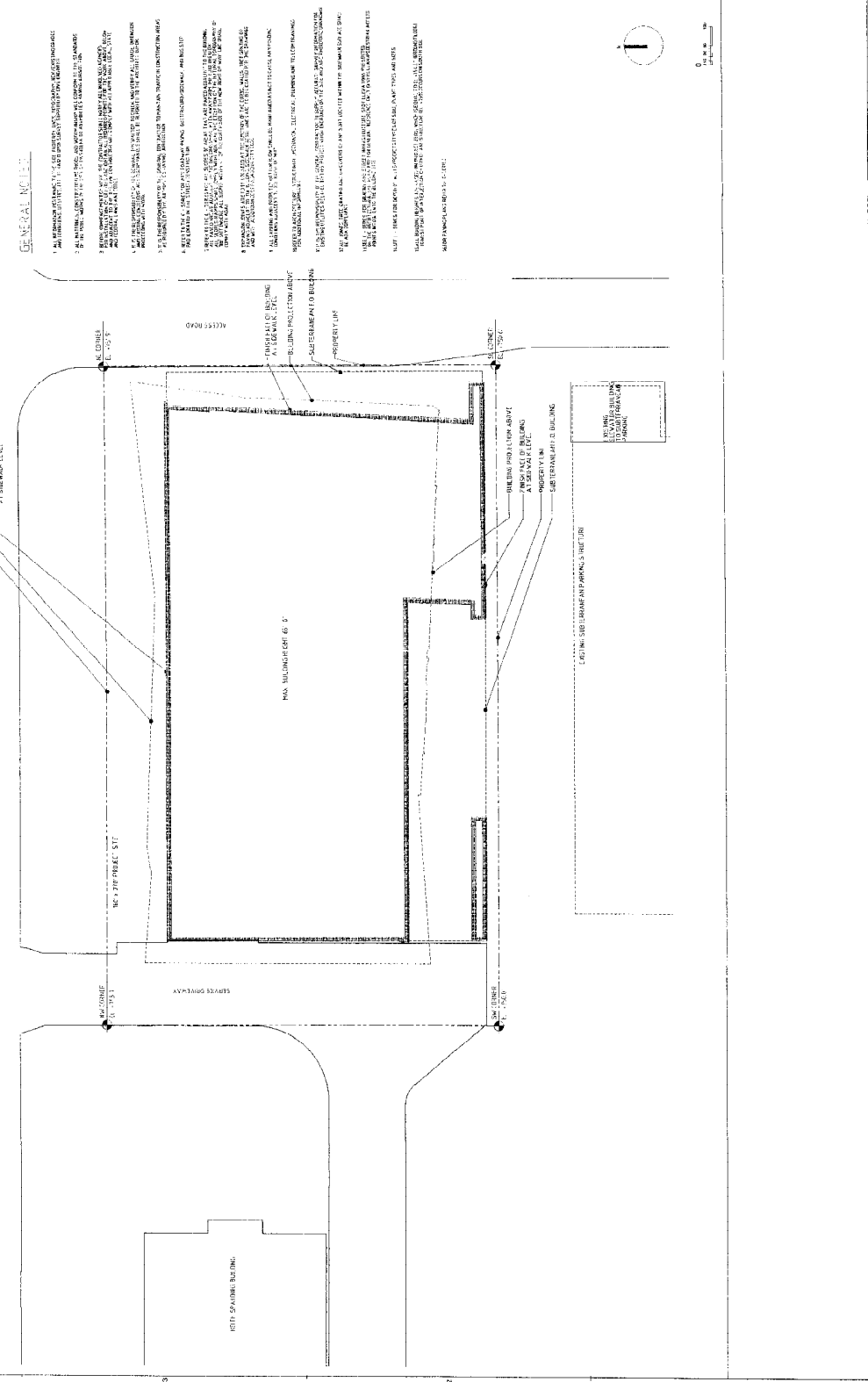
**CAHILL CENTER FOR ASTRONOMY AND ASTROPHYSICS**

**SITE PLAN**

**PROJECT DATA**

PROJECT ARCHITECT: **mCiphous**  
 PROJECT NUMBER: **A-020.0**  
 PROJECT NAME: **CAHILL CENTER FOR ASTRONOMY AND ASTROPHYSICS**  
 PROJECT LOCATION: **1300 EAST CALIFORNIA AVENUE, PASADENA, CALIFORNIA 91105**

**GENERAL NOTES**



- 1. ALL DIMENSIONS SHOWN ARE AS SHOWN UNLESS OTHERWISE NOTED.
- 2. THE TOTAL AREA OF THIS PLAN DOES NOT EXCEED 1.5 ACRES.
- 3. THE TOTAL AREA OF THIS PLAN DOES NOT EXCEED 1.5 ACRES.
- 4. THE TOTAL AREA OF THIS PLAN DOES NOT EXCEED 1.5 ACRES.
- 5. THE TOTAL AREA OF THIS PLAN DOES NOT EXCEED 1.5 ACRES.
- 6. THE TOTAL AREA OF THIS PLAN DOES NOT EXCEED 1.5 ACRES.
- 7. THE TOTAL AREA OF THIS PLAN DOES NOT EXCEED 1.5 ACRES.
- 8. THE TOTAL AREA OF THIS PLAN DOES NOT EXCEED 1.5 ACRES.
- 9. THE TOTAL AREA OF THIS PLAN DOES NOT EXCEED 1.5 ACRES.
- 10. THE TOTAL AREA OF THIS PLAN DOES NOT EXCEED 1.5 ACRES.



1891  
CALIFORNIA INSTITUTE OF TECHNOLOGY

ARCHITECT:  
 r/Ompos &  
 2541 Coronado Avenue  
 Santa Monica, CA 90401  
 Tel: 310-482-2871  
 Fax: 310-482-2571

SEAL

DATE	BY	DESCRIPTION
09-13-2005	SRJ/SD	SITE SD
12-22-2005	SRJ/SD	SDS SD

LEFT PLAN



CALTECH

CAHILL CENTER  
 FOR ASTRONOMY  
 AND  
 ASTROPHYSICS

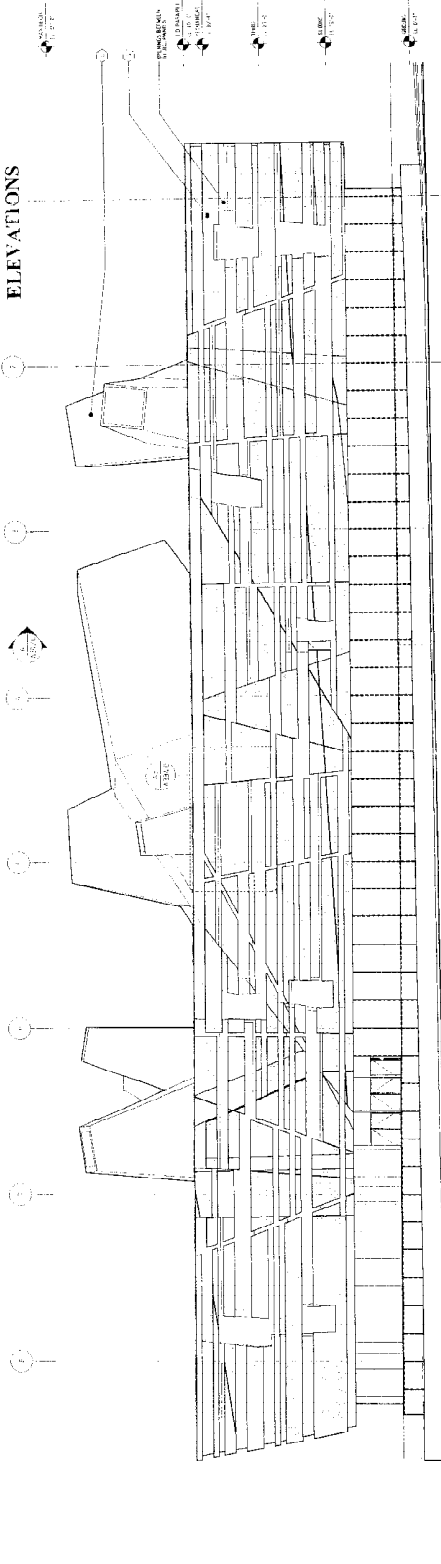
100 EAST CALIFORNIA BLVD  
 PASADENA, CALIFORNIA 91712

CALTECH PROJECT NUMBER CP 400  
 DRAWING NUMBER  
 PAGES: 20 DRAWING SHEET  
 SCALE: 1/8" = 1'-0"

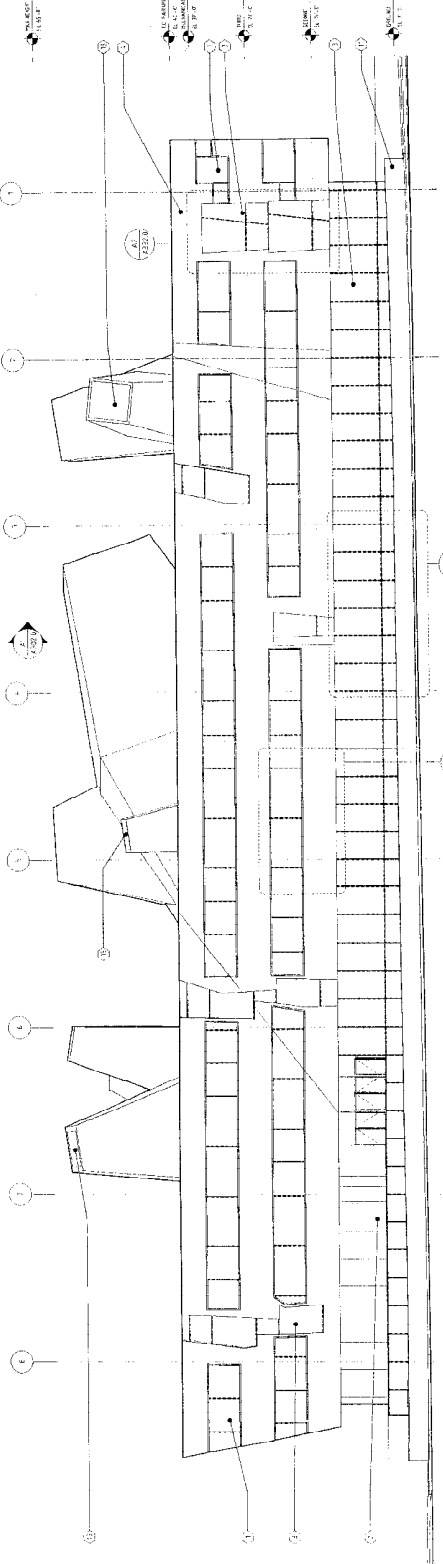
NORTH  
 ELEVATION

A-201.0

CALTECH & THE ARCHITECTS  
 ARE PRESENTLY  
 CONSIDERING  
 MODIFICATIONS TO THE  
 ELEVATIONS

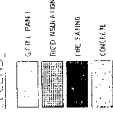


102'-4 ELEV SKIN  
 102'-3 1/2" 102'-4"



102'-7 1/2" WEATHER WALL  
 102'-6 1/2" 102'-7 1/2"

**LEGEND**



0501 UNFINISHED ALUMINUM  
 0502 GYP VANDERBILT STRUCTURE  
 0503 UNFINISHED GYP BOARD  
 0504 UNFINISHED GYP BOARD  
 0505 GYP BOARD W/ AC  
 0506 GYP BOARD W/ AC  
 0507 SFR FORM  
 0508 REC INSULATION  
 0509 THE FINISH  
 0510 CONCRETE

0601 EXPOSED CONCRETE  
 0602 DIMBER  
 0603 UNFINISHED GYP BOARD  
 0604 UNFINISHED GYP BOARD  
 0605 UNFINISHED GYP BOARD  
 0606 UNFINISHED GYP BOARD  
 0607 UNFINISHED GYP BOARD  
 0608 UNFINISHED GYP BOARD  
 0609 UNFINISHED GYP BOARD  
 0610 UNFINISHED GYP BOARD

**KEYNOTES**

- GLAZED ALUMINUM WINDOW SYSTEM
- GLAZED ALUMINUM WINDOW SYSTEM
- GLAZED ALUMINUM WINDOW SYSTEM
- GLAZED ALUMINUM WINDOW SYSTEM
- GLAZED ALUMINUM WINDOW SYSTEM
- GLAZED ALUMINUM WINDOW SYSTEM
- GLAZED ALUMINUM WINDOW SYSTEM
- GLAZED ALUMINUM WINDOW SYSTEM
- GLAZED ALUMINUM WINDOW SYSTEM
- GLAZED ALUMINUM WINDOW SYSTEM
- GLAZED ALUMINUM WINDOW SYSTEM
- GLAZED ALUMINUM WINDOW SYSTEM
- GLAZED ALUMINUM WINDOW SYSTEM
- GLAZED ALUMINUM WINDOW SYSTEM
- GLAZED ALUMINUM WINDOW SYSTEM

**GENERAL NOTES**

1. REFER TO GENERAL NOTES ON EACH DRAWING

CALTECH & THE ARCHITECTS  
 ARE PRESENTLY  
 CONSIDERING  
 MODIFICATIONS TO THE  
 ELEVATIONS



ARCHITECT:  
 mOppoios®  
 2041 Gateway Avenue  
 San Jose, CA 95128  
 Tel: 415-435-2070  
 Fax: 415-435-2070

DATE: 12/20/00  
 DRAWN BY: JLD  
 CHECKED BY: JLD

SCALE:

ITEM #	SYMBOL	DESCRIPTION
1		
2		
3		
4		
5		
6		
7		
8		
9		
10		
11		
12		
13		
14		
15		
16		
17		
18		
19		
20		
21		
22		
23		
24		
25		
26		
27		
28		
29		
30		
31		
32		
33		
34		
35		
36		
37		
38		
39		
40		
41		
42		
43		
44		
45		
46		
47		
48		
49		
50		
51		
52		
53		
54		
55		
56		
57		
58		
59		
60		
61		
62		
63		
64		
65		
66		
67		
68		
69		
70		
71		
72		
73		
74		
75		
76		
77		
78		
79		
80		
81		
82		
83		
84		
85		
86		
87		
88		
89		
90		
91		
92		
93		
94		
95		
96		
97		
98		
99		
100		



CALTECH

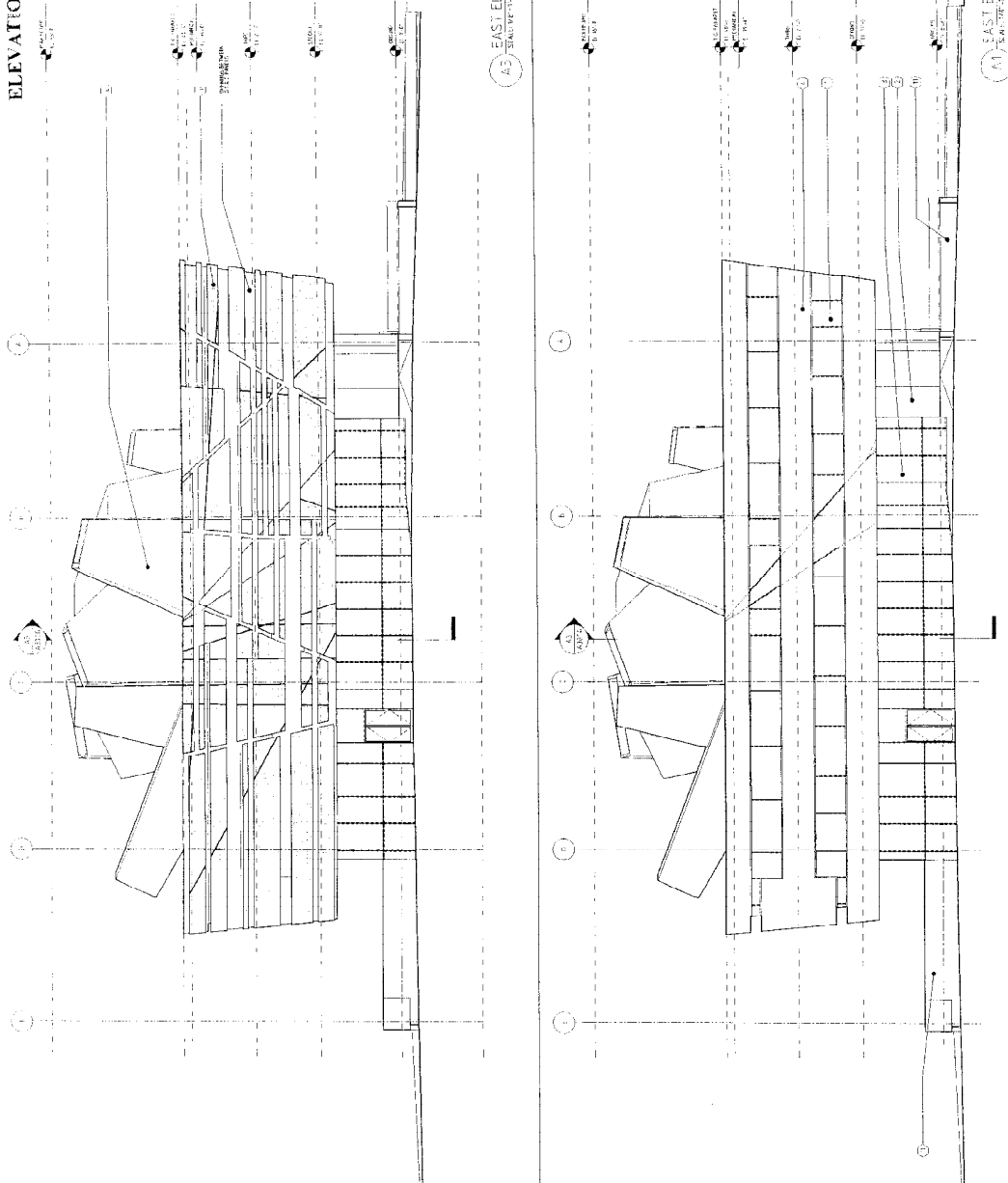
CALTECH CENTER  
 FOR ASTRONOMY  
 AND  
 ASTROPHYSICS

100 EAST CALIFORNIA BLVD  
 PASADENA, CALIFORNIA 91125

DRAWING NUMBER: CP-406  
 DRAWN BY: JLD  
 CHECKED BY: JLD  
 SCALE: 1/8" = 1'-0"

EAST  
 ELEVATION

A-202.0



GENERAL NOTES:  
 1. ELEVATION IS OF PROPOSED FACADE PROVISIONS

LEGEND:  
 1. 1/2" GLASS  
 2. RIGID INSULATOR  
 3. 1/2" GYPSUM BOARD

- KEY NOTES:  
 1. GLAZED ALUMINUM WINDOW SYSTEM  
 2. GLAZED ALUMINUM WINDOW SYSTEM  
 3. 1/2" RIGID INSULATOR  
 4. 1/2" GYPSUM BOARD  
 5. 1/2" GYPSUM BOARD  
 6. 1/2" GYPSUM BOARD  
 7. 1/2" GYPSUM BOARD  
 8. 1/2" GYPSUM BOARD  
 9. 1/2" GYPSUM BOARD  
 10. 1/2" GYPSUM BOARD  
 11. 1/2" GYPSUM BOARD  
 12. 1/2" GYPSUM BOARD  
 13. 1/2" GYPSUM BOARD  
 14. 1/2" GYPSUM BOARD  
 15. 1/2" GYPSUM BOARD  
 16. 1/2" GYPSUM BOARD  
 17. 1/2" GYPSUM BOARD  
 18. 1/2" GYPSUM BOARD  
 19. 1/2" GYPSUM BOARD  
 20. 1/2" GYPSUM BOARD  
 21. 1/2" GYPSUM BOARD  
 22. 1/2" GYPSUM BOARD  
 23. 1/2" GYPSUM BOARD  
 24. 1/2" GYPSUM BOARD  
 25. 1/2" GYPSUM BOARD  
 26. 1/2" GYPSUM BOARD  
 27. 1/2" GYPSUM BOARD  
 28. 1/2" GYPSUM BOARD  
 29. 1/2" GYPSUM BOARD  
 30. 1/2" GYPSUM BOARD  
 31. 1/2" GYPSUM BOARD  
 32. 1/2" GYPSUM BOARD  
 33. 1/2" GYPSUM BOARD  
 34. 1/2" GYPSUM BOARD  
 35. 1/2" GYPSUM BOARD  
 36. 1/2" GYPSUM BOARD  
 37. 1/2" GYPSUM BOARD  
 38. 1/2" GYPSUM BOARD  
 39. 1/2" GYPSUM BOARD  
 40. 1/2" GYPSUM BOARD  
 41. 1/2" GYPSUM BOARD  
 42. 1/2" GYPSUM BOARD  
 43. 1/2" GYPSUM BOARD  
 44. 1/2" GYPSUM BOARD  
 45. 1/2" GYPSUM BOARD  
 46. 1/2" GYPSUM BOARD  
 47. 1/2" GYPSUM BOARD  
 48. 1/2" GYPSUM BOARD  
 49. 1/2" GYPSUM BOARD  
 50. 1/2" GYPSUM BOARD  
 51. 1/2" GYPSUM BOARD  
 52. 1/2" GYPSUM BOARD  
 53. 1/2" GYPSUM BOARD  
 54. 1/2" GYPSUM BOARD  
 55. 1/2" GYPSUM BOARD  
 56. 1/2" GYPSUM BOARD  
 57. 1/2" GYPSUM BOARD  
 58. 1/2" GYPSUM BOARD  
 59. 1/2" GYPSUM BOARD  
 60. 1/2" GYPSUM BOARD  
 61. 1/2" GYPSUM BOARD  
 62. 1/2" GYPSUM BOARD  
 63. 1/2" GYPSUM BOARD  
 64. 1/2" GYPSUM BOARD  
 65. 1/2" GYPSUM BOARD  
 66. 1/2" GYPSUM BOARD  
 67. 1/2" GYPSUM BOARD  
 68. 1/2" GYPSUM BOARD  
 69. 1/2" GYPSUM BOARD  
 70. 1/2" GYPSUM BOARD  
 71. 1/2" GYPSUM BOARD  
 72. 1/2" GYPSUM BOARD  
 73. 1/2" GYPSUM BOARD  
 74. 1/2" GYPSUM BOARD  
 75. 1/2" GYPSUM BOARD  
 76. 1/2" GYPSUM BOARD  
 77. 1/2" GYPSUM BOARD  
 78. 1/2" GYPSUM BOARD  
 79. 1/2" GYPSUM BOARD  
 80. 1/2" GYPSUM BOARD  
 81. 1/2" GYPSUM BOARD  
 82. 1/2" GYPSUM BOARD  
 83. 1/2" GYPSUM BOARD  
 84. 1/2" GYPSUM BOARD  
 85. 1/2" GYPSUM BOARD  
 86. 1/2" GYPSUM BOARD  
 87. 1/2" GYPSUM BOARD  
 88. 1/2" GYPSUM BOARD  
 89. 1/2" GYPSUM BOARD  
 90. 1/2" GYPSUM BOARD  
 91. 1/2" GYPSUM BOARD  
 92. 1/2" GYPSUM BOARD  
 93. 1/2" GYPSUM BOARD  
 94. 1/2" GYPSUM BOARD  
 95. 1/2" GYPSUM BOARD  
 96. 1/2" GYPSUM BOARD  
 97. 1/2" GYPSUM BOARD  
 98. 1/2" GYPSUM BOARD  
 99. 1/2" GYPSUM BOARD  
 100. 1/2" GYPSUM BOARD



**CALTECH CENTER  
FOR ASTRONOMY  
AND  
ASTROPHYSICS**

ARCHITECT:  
**m2dgnosis®**  
3041 Colorado Avenue  
Santa Monica, CA 90404  
TEL: 310 318-2263  
FAX: 310 318-2372

SEAL:

DATE	SYMBOL	DESCRIPTION
08-28-2005	0701 SD	
10-25-2005	1002 SD	

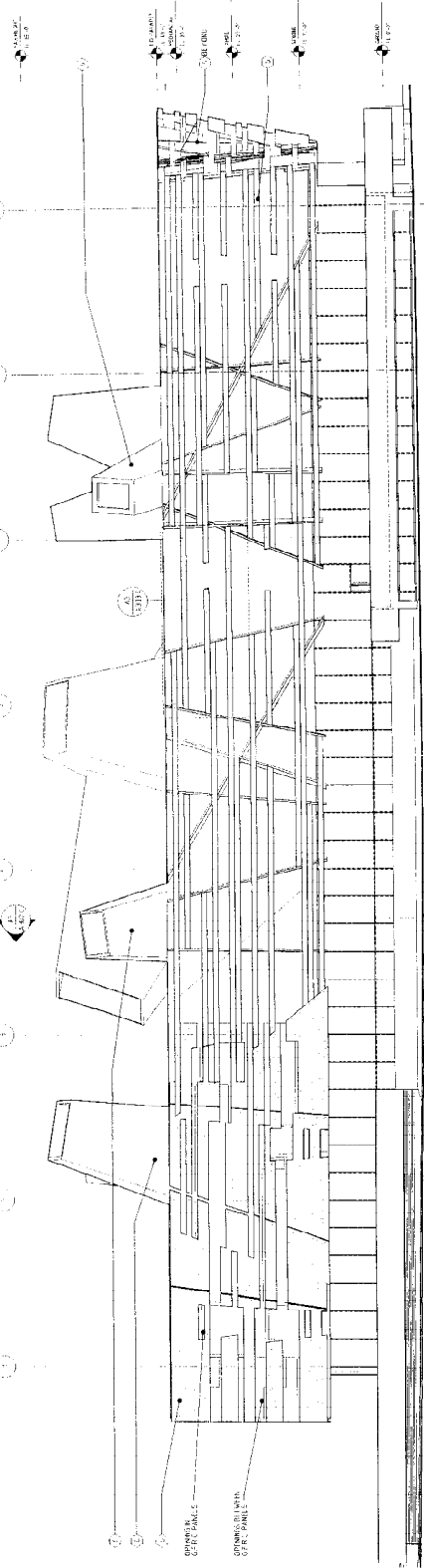


CALTECH  
**CALTECH CENTER  
FOR ASTRONOMY  
AND  
ASTROPHYSICS**  
1001 GALCRAFT DRIVE  
PASADENA, CALIFORNIA 91126  
CALTECH PROJECT NUMBER: C1-400  
PHASE: EXHIBIT A  
SCALE: 1/8" = 1'-0"

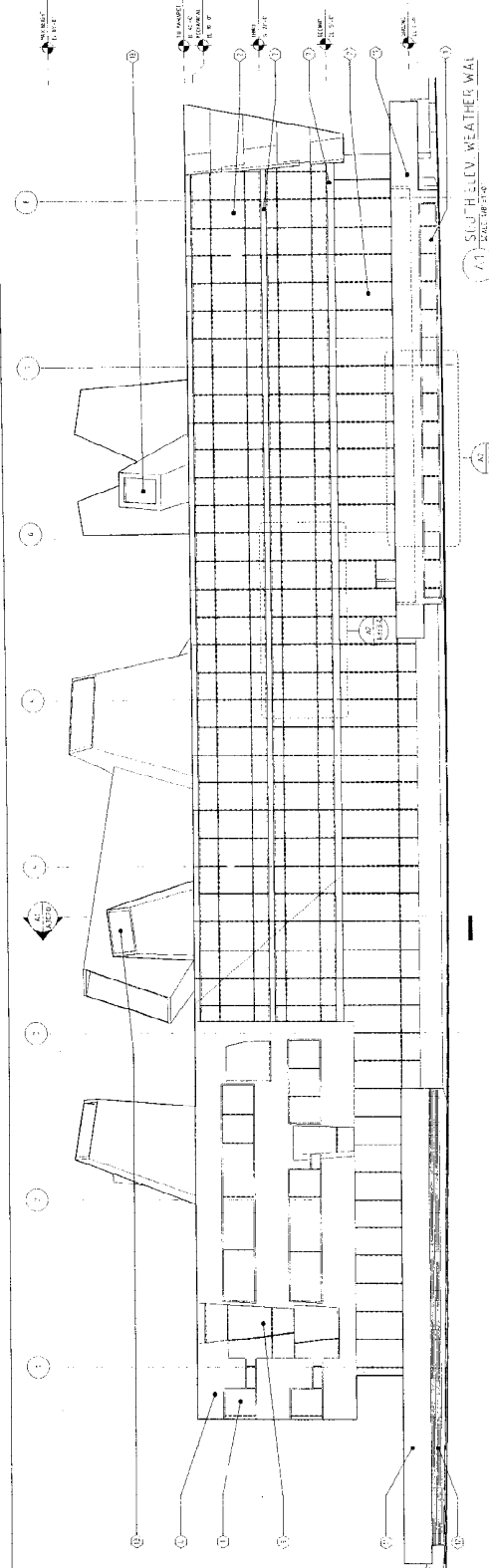
**SOUTH  
ELEVATION**

**A-203.0**

**CALL OUTS  
ARE PRESENTLY  
CONSIDERING  
MODIFICATIONS TO THE  
ELEVATIONS**



**A1 SOUTH-ELEV. SKIN**  
SCALE: 1/8" = 1'-0"

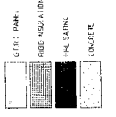


**A2 SOUTH-ELEV. WEATHER WALL**  
SCALE: 1/8" = 1'-0"

**GENERAL NOTES:**

- 1. REFER TO SECTION REFLECTIVE GLAZING SYSTEMS

**LEGEND:**



- KEY NOTES:**
1. ALUMINUM WINDOW SYSTEM
  2. ALUMINUM WINDOW SYSTEM
  3. ALUMINUM WINDOW SYSTEM
  4. ALUMINUM WINDOW SYSTEM
  5. ALUMINUM WINDOW SYSTEM
  6. ALUMINUM WINDOW SYSTEM
  7. ALUMINUM WINDOW SYSTEM
  8. ALUMINUM WINDOW SYSTEM
  9. ALUMINUM WINDOW SYSTEM
  10. ALUMINUM WINDOW SYSTEM
  11. ALUMINUM WINDOW SYSTEM
  12. ALUMINUM WINDOW SYSTEM
  13. ALUMINUM WINDOW SYSTEM
  14. ALUMINUM WINDOW SYSTEM
  15. ALUMINUM WINDOW SYSTEM
  16. ALUMINUM WINDOW SYSTEM
  17. ALUMINUM WINDOW SYSTEM
  18. ALUMINUM WINDOW SYSTEM
  19. ALUMINUM WINDOW SYSTEM
  20. ALUMINUM WINDOW SYSTEM
  21. ALUMINUM WINDOW SYSTEM
  22. ALUMINUM WINDOW SYSTEM
  23. ALUMINUM WINDOW SYSTEM
  24. ALUMINUM WINDOW SYSTEM
  25. ALUMINUM WINDOW SYSTEM
  26. ALUMINUM WINDOW SYSTEM
  27. ALUMINUM WINDOW SYSTEM
  28. ALUMINUM WINDOW SYSTEM
  29. ALUMINUM WINDOW SYSTEM
  30. ALUMINUM WINDOW SYSTEM
  31. ALUMINUM WINDOW SYSTEM
  32. ALUMINUM WINDOW SYSTEM
  33. ALUMINUM WINDOW SYSTEM
  34. ALUMINUM WINDOW SYSTEM
  35. ALUMINUM WINDOW SYSTEM
  36. ALUMINUM WINDOW SYSTEM
  37. ALUMINUM WINDOW SYSTEM
  38. ALUMINUM WINDOW SYSTEM
  39. ALUMINUM WINDOW SYSTEM
  40. ALUMINUM WINDOW SYSTEM
  41. ALUMINUM WINDOW SYSTEM
  42. ALUMINUM WINDOW SYSTEM
  43. ALUMINUM WINDOW SYSTEM
  44. ALUMINUM WINDOW SYSTEM
  45. ALUMINUM WINDOW SYSTEM
  46. ALUMINUM WINDOW SYSTEM
  47. ALUMINUM WINDOW SYSTEM
  48. ALUMINUM WINDOW SYSTEM
  49. ALUMINUM WINDOW SYSTEM
  50. ALUMINUM WINDOW SYSTEM