





# PROPOSALS for WAVERLY HIGH SCHOOL TRAFFIC MITIGATION

## **1. Transportation Consultant to Develop Plan:**

- Prior to the City's issuance of a Certificate of Occupancy, the Waverly School will hire a transportation consultant to develop a student drop off and pick up plan (transportation plan) to be submitted to the city for its review and approval.

## **2. City Review:**

- The transportation plan will be subject to the Cities review and revisions as deemed necessary by the City's Zoning Administrator.

## **3. Required Transit Rules:**

- Parents, faculty and student drivers will be required to access the High School on Waverly Drive eastbound (from Pasadena Avenue) during morning and evening hours.
- Access to May Alley and the prevailing direction of all School related traffic will be subject to the findings and recommendations of the approved transportation plan.
- The School will promulgate its transit rules (routes) to parents on a quarterly basis via the campus newsletter and its internet bulletins.
- All vehicle operation and carpooling will be in compliance with the State of California's Vehicle Codes.

## **4. Street Parking Protocols:**

- Student drivers will be reminded not to park on Waverly Drive. The School will periodically patrol the abutting streets to ensure the compliance by its students.
- The School will provide 24 preferential student parking spaces and all student drivers will be issued decals or mirror tags for their vehicles.
- The School will establish a Traffic/Parking Hotline (telephone number) which will be distributed to all neighboring businesses and residents to address all school related transportation and parking issues.

## Driver Survey Results

**1. Do you carpool with any students? If so, who?**

Yes: 15

No: 62

**2. Do you have a driver's license? If not, when will you get your license?**

Yes: 18

No: 60

**3. Do you have your own car? If not, do you have definite plans to get a car within the next year?**

Yes: 16

No: 62

Plans to get a car:

Yes: 22

No: 33

Possibly: 4

**4. If you drive, do you drive your own car to school? How many days a week do you drive?**

Yes: 16

No: 0

**Days per week:**

One to two days: 2

Three to five days: 1

Five days: 12

**5. If you drive, where do you park?**

In front of the high school: 3

Pasadena Avenue: 2

Waverly Drive: 5

Palmetto: 10

Bellevue Drive: 1

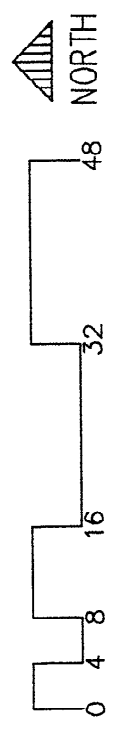
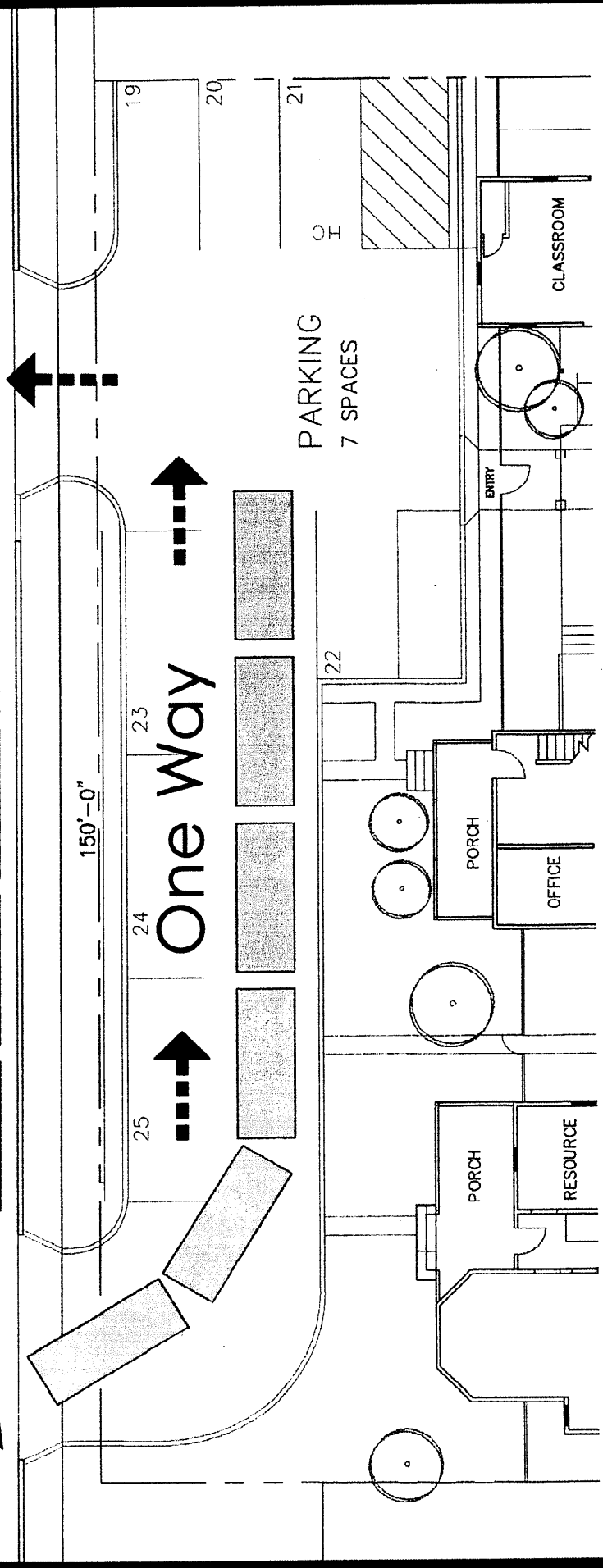
**6. If you drive, do you bring other students to school? If so, who?**

Yes: 3

No: 13

LOADING AND UNLOADING OF STUDENTS:  
6 OFF STREET DROP OFF SPACES AND  
4 ON STREET DROP OFF SPACES

WAVERLY DRIVE

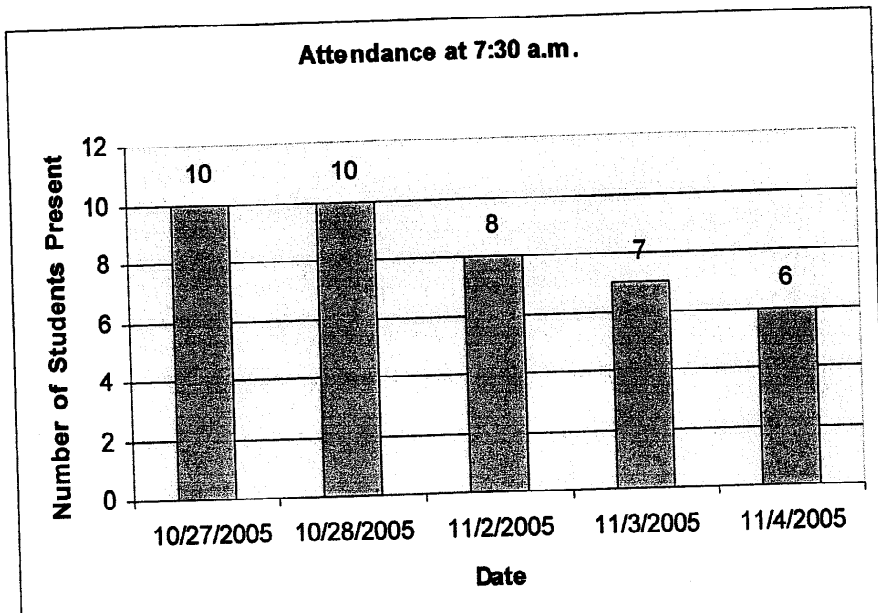
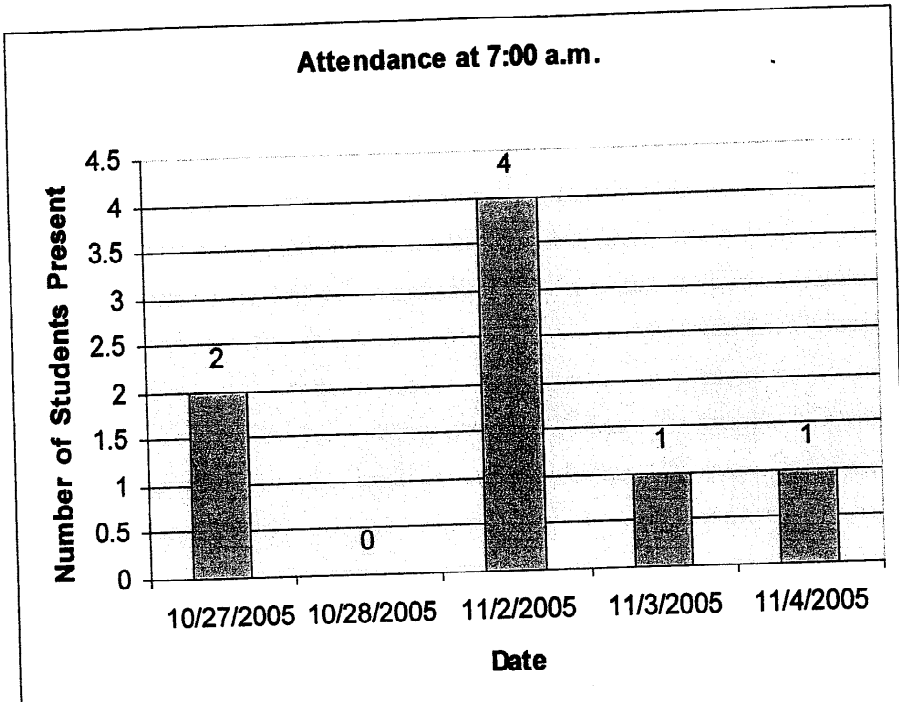


# Drop Off and Pick Up Diagram

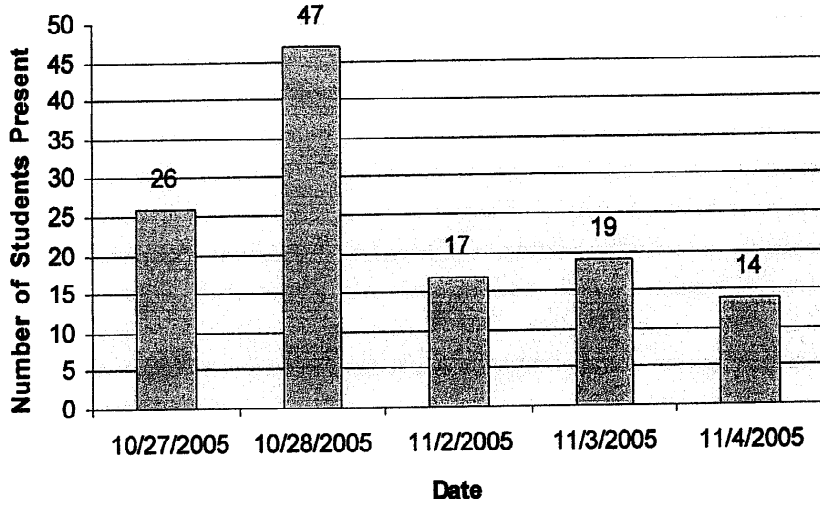
## School Driver Information Table

	Founded In	Tuition in 2005-2006	Number of Students	Number of Students who Drive
<b>The Waverly School</b>	1993	YK: \$8,426 K-6 <sup>th</sup> : \$10,731 M. S.: \$12,348 H. S.: \$14,438	E. S.: 147 M. S.: 56 H. S.: 78	16
<b>Westridge</b>	1913	4 <sup>th</sup> -6 <sup>th</sup> : \$19,300 7 <sup>th</sup> -12 <sup>th</sup> : \$20,600 New Student Fee: \$1,000	4 <sup>th</sup> -6 <sup>th</sup> : 119 7 <sup>th</sup> -8 <sup>th</sup> : 128 9 <sup>th</sup> -12 <sup>th</sup> : 282	Unknown
<b>Polytechnic</b>	1907	K: \$13,100 1 <sup>st</sup> -5 <sup>th</sup> : \$15,300 6 <sup>th</sup> -8 <sup>th</sup> : \$18,000 9 <sup>th</sup> -12 <sup>th</sup> : \$20,700	K-5 <sup>th</sup> : 265 6 <sup>th</sup> -8 <sup>th</sup> : 212 9 <sup>th</sup> -12 <sup>th</sup> : 357	Unknown. Polytechnic has a policy that only seniors can drive to school (there are 83 seniors), and juniors can drive only if they carpool.
<b>Mayfield Junior</b>	1931	\$12,200	E. S.: Approx. 240 M. S.: Approx. 241	0 (Too young)
<b>Mayfield Senior</b>	1931	\$15,200	9 <sup>th</sup> : Approx. 78 10 <sup>th</sup> : Approx. 78 11 <sup>th</sup> : Approx. 78 12 <sup>th</sup> : Approx. 78	50% of seniors 50% of juniors

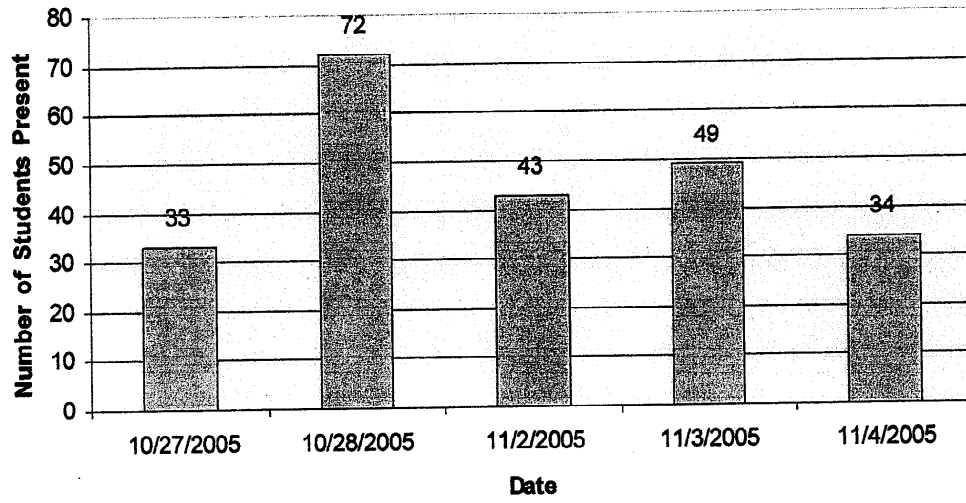
# Elementary & Middle School Attendance Graph: 10/27/05 – 11/4/05



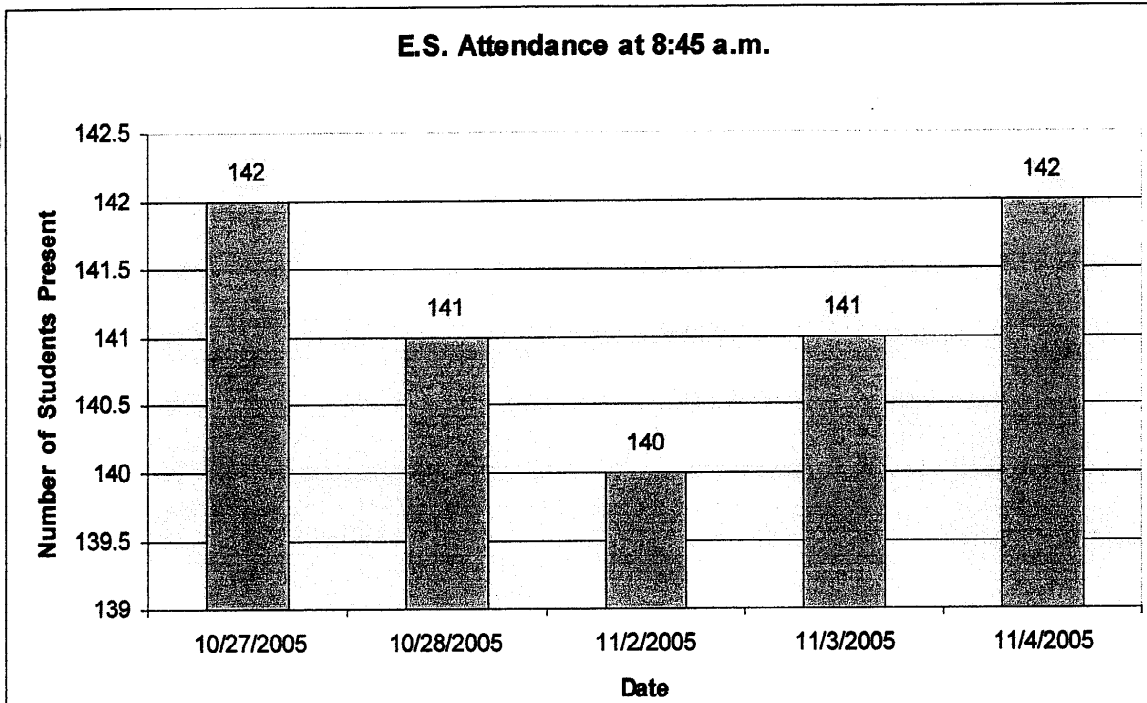
**Attendance at 8:00 a.m.**



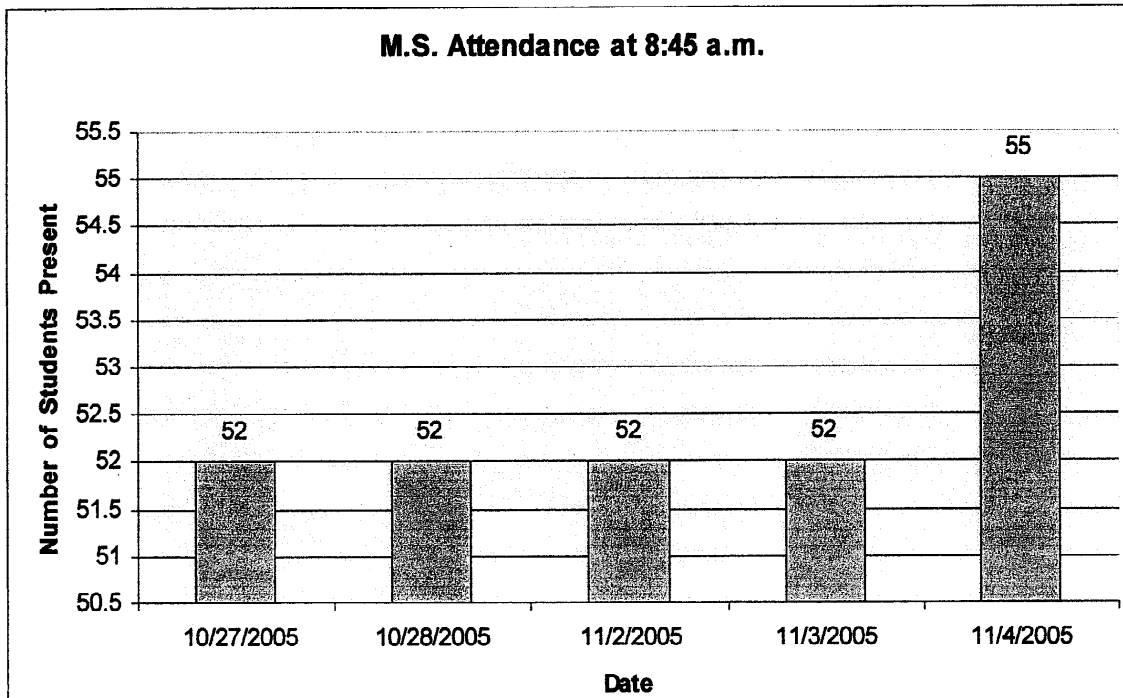
**Attendance at 8:30 a.m.**



### E.S. Attendance at 8:45 a.m.



### M.S. Attendance at 8:45 a.m.



#### October 27, 28:

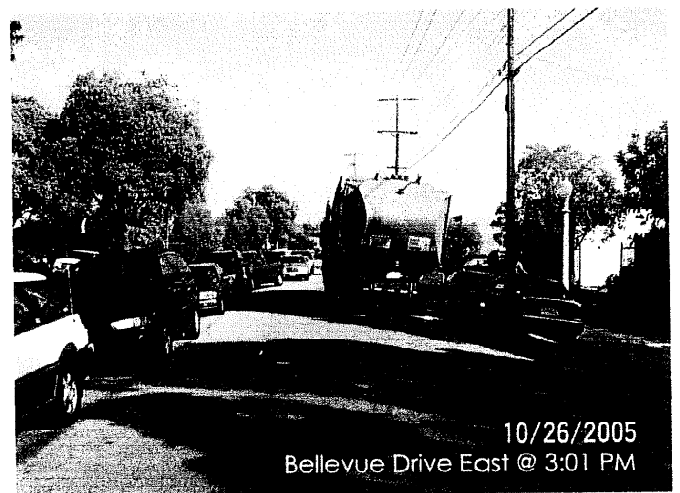
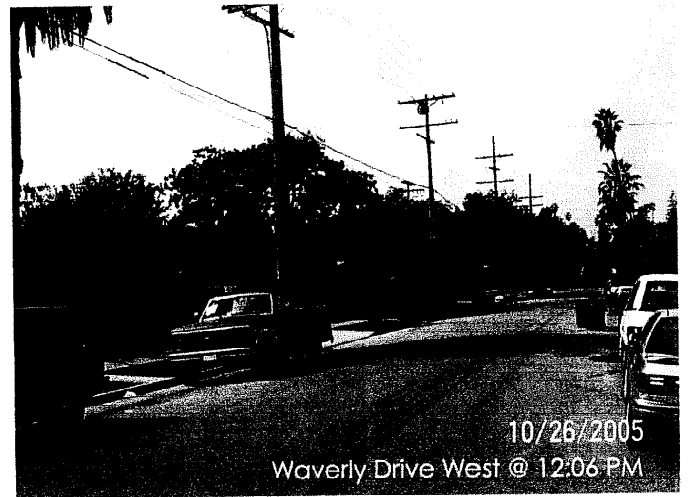
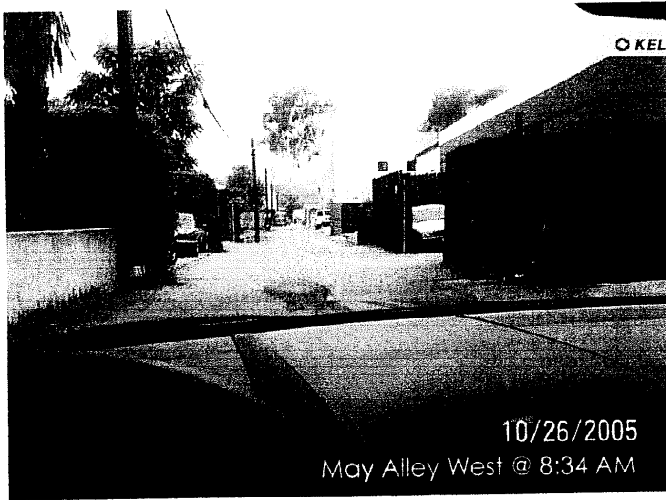
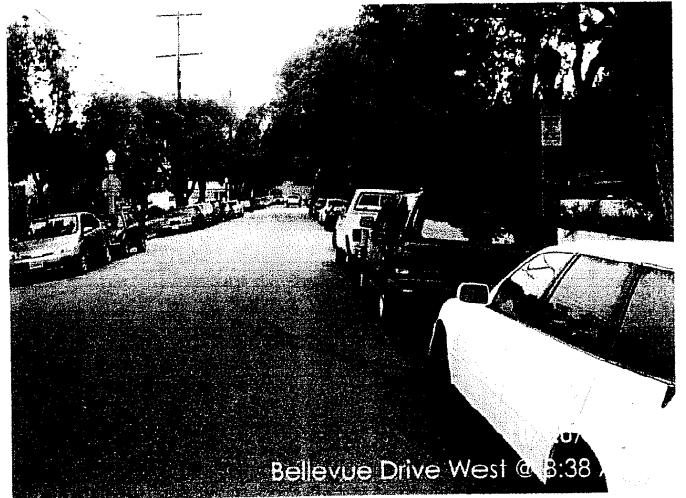
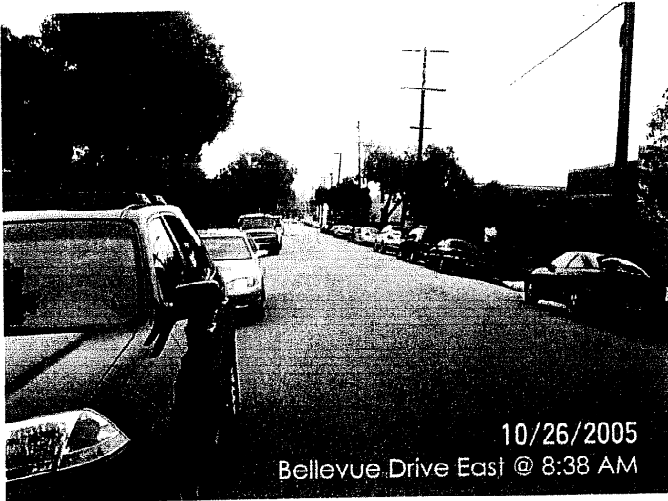
Total E.S. and M.S. students enrolled: 203

#### November 2, 3, 4:

Total E.S. and M.S. students enrolled: 204

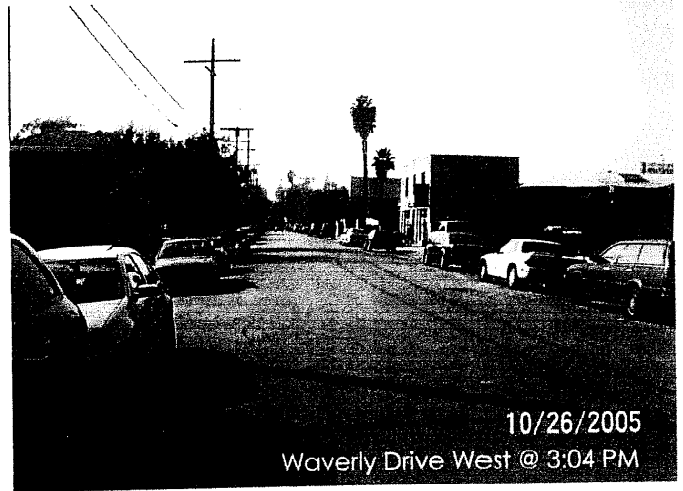
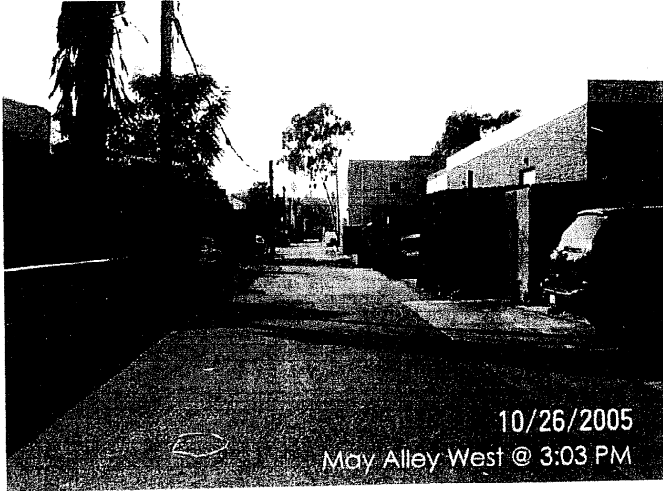


Wednesday 10/26/05

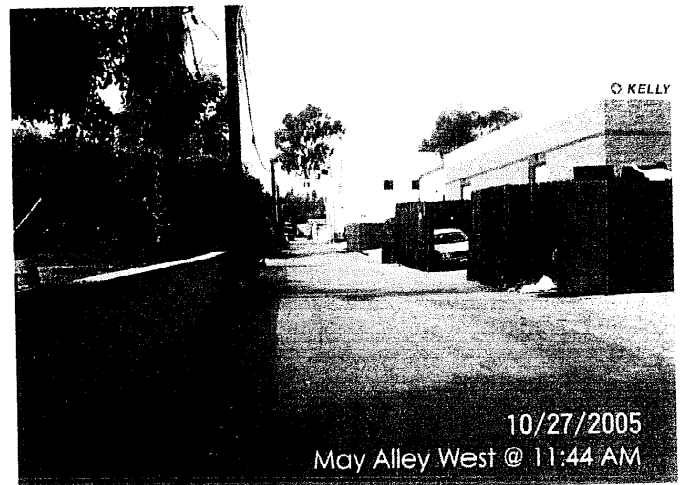
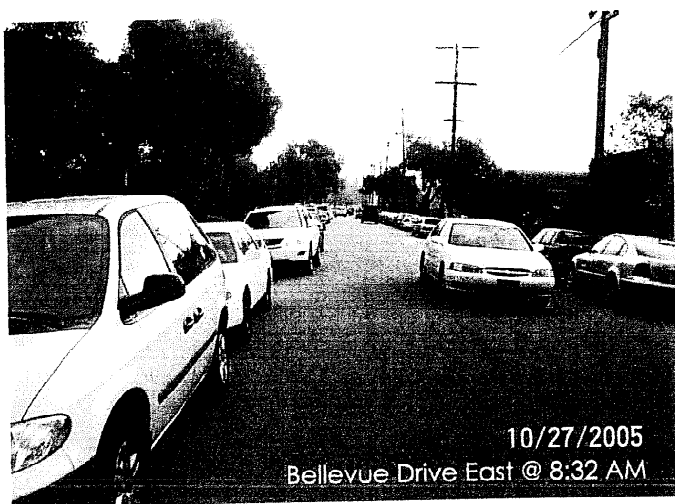
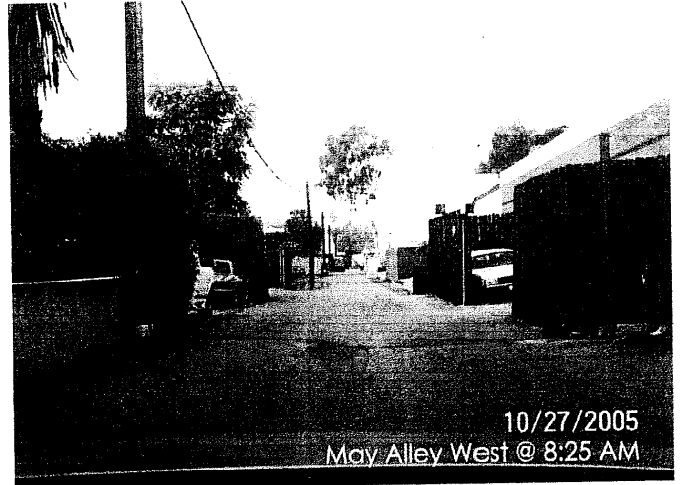
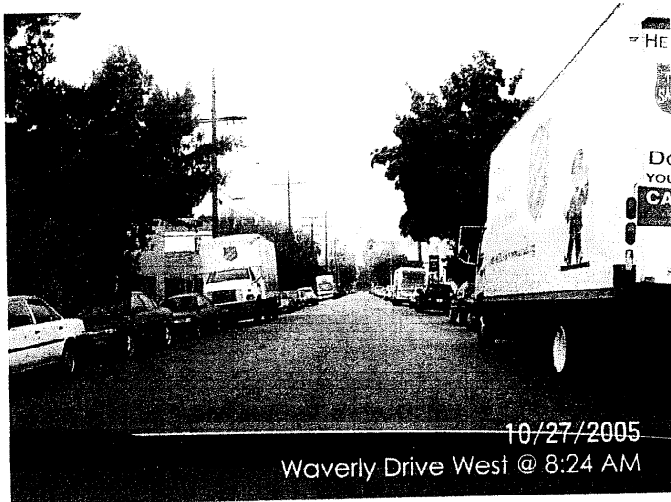


Waverly Traffic Study -1

# Wednesday Continued 10/26/05

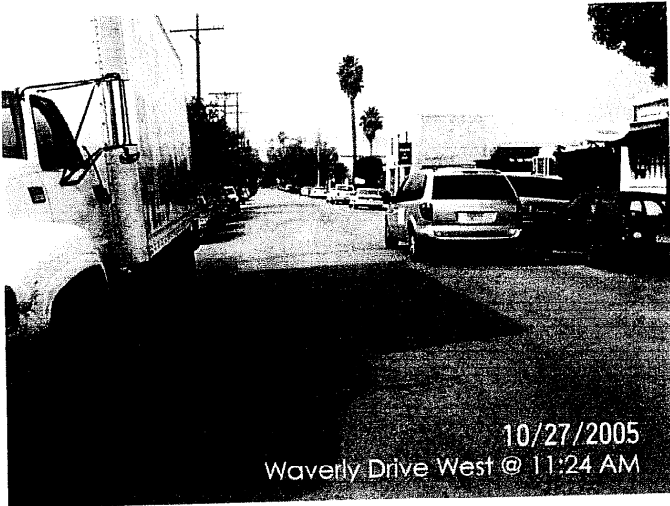


# Thursday 10/27/05

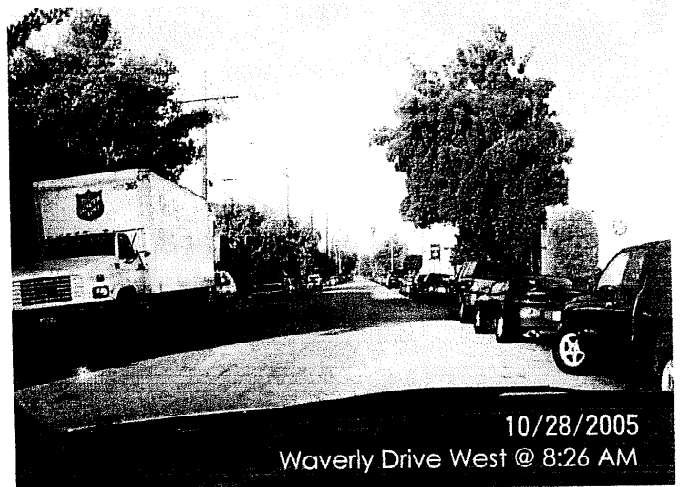
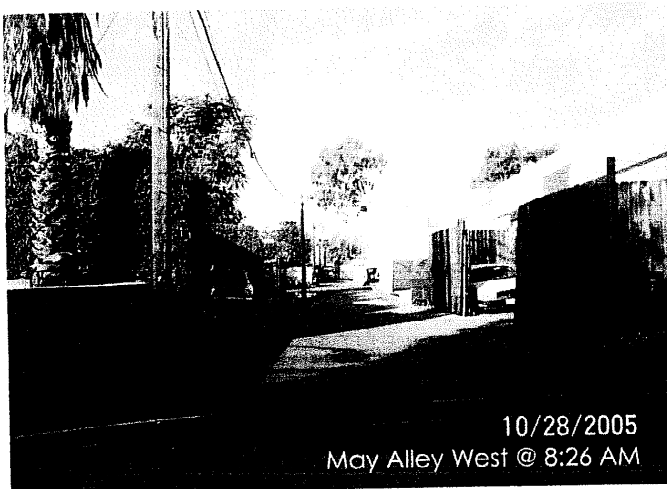
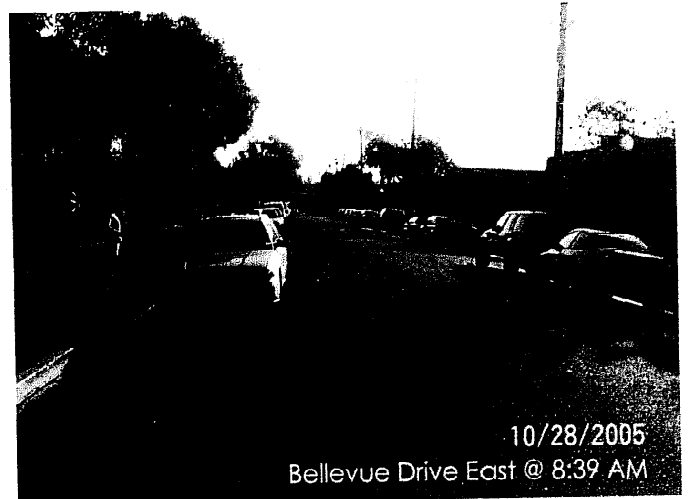
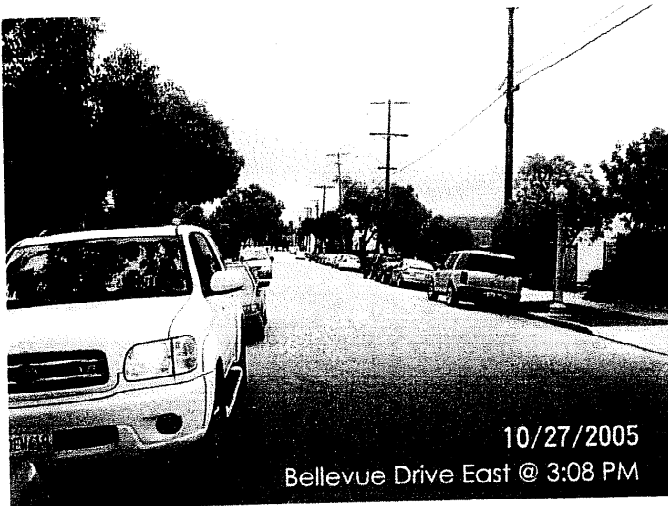


# Waverly Traffic Study -2

# Thursday Continued 10/27/05

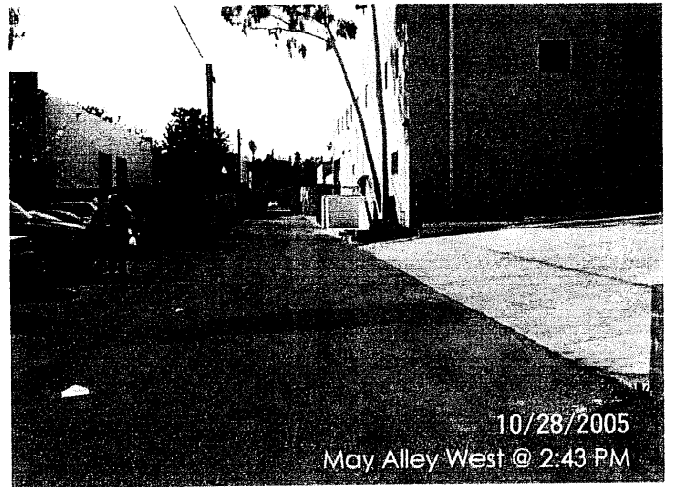
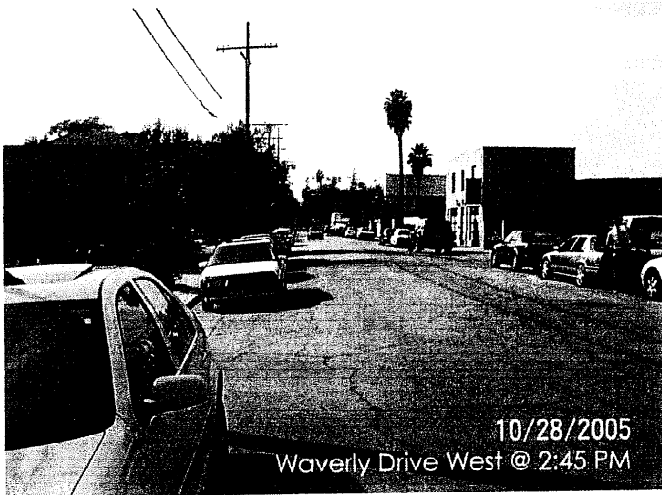


# Friday 10/28/05

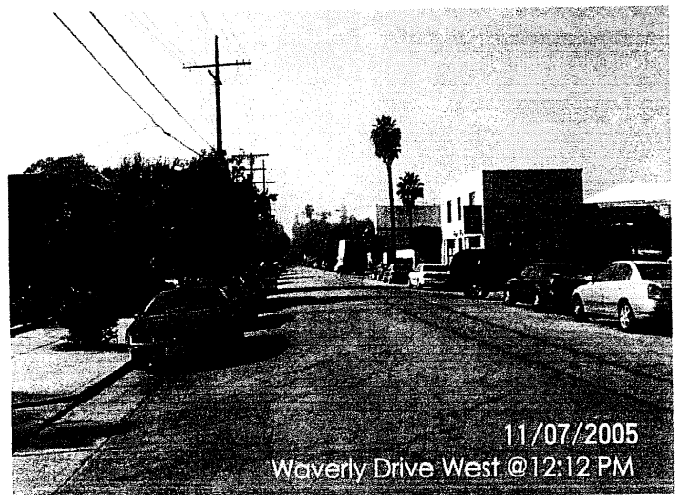
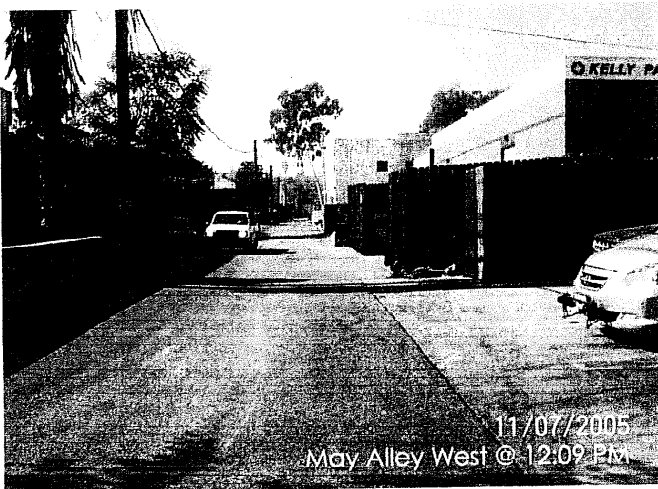
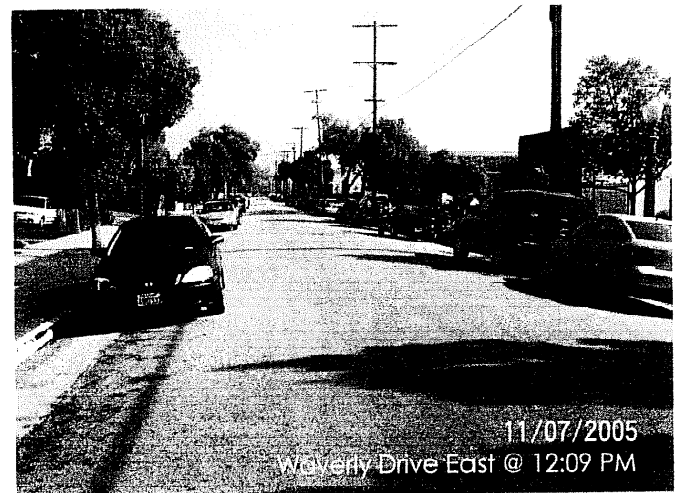
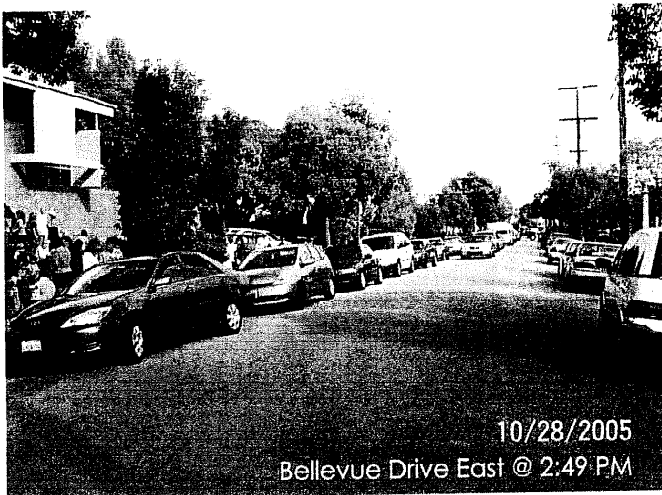


# Waverly Traffic Study -3

# Friday Continued 10/28/05



# Monday 11/07/05



# Monday Continued 11/07/05

