

MADE POSSIBLE BY
PNC
 Presidents Neighborhood Coalition
 P.O. BOX 15282, Foothill, California 91115
 PHILIPPE/PROJECTIONS CONSULTING, INC. 310.351.0747

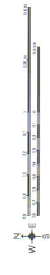
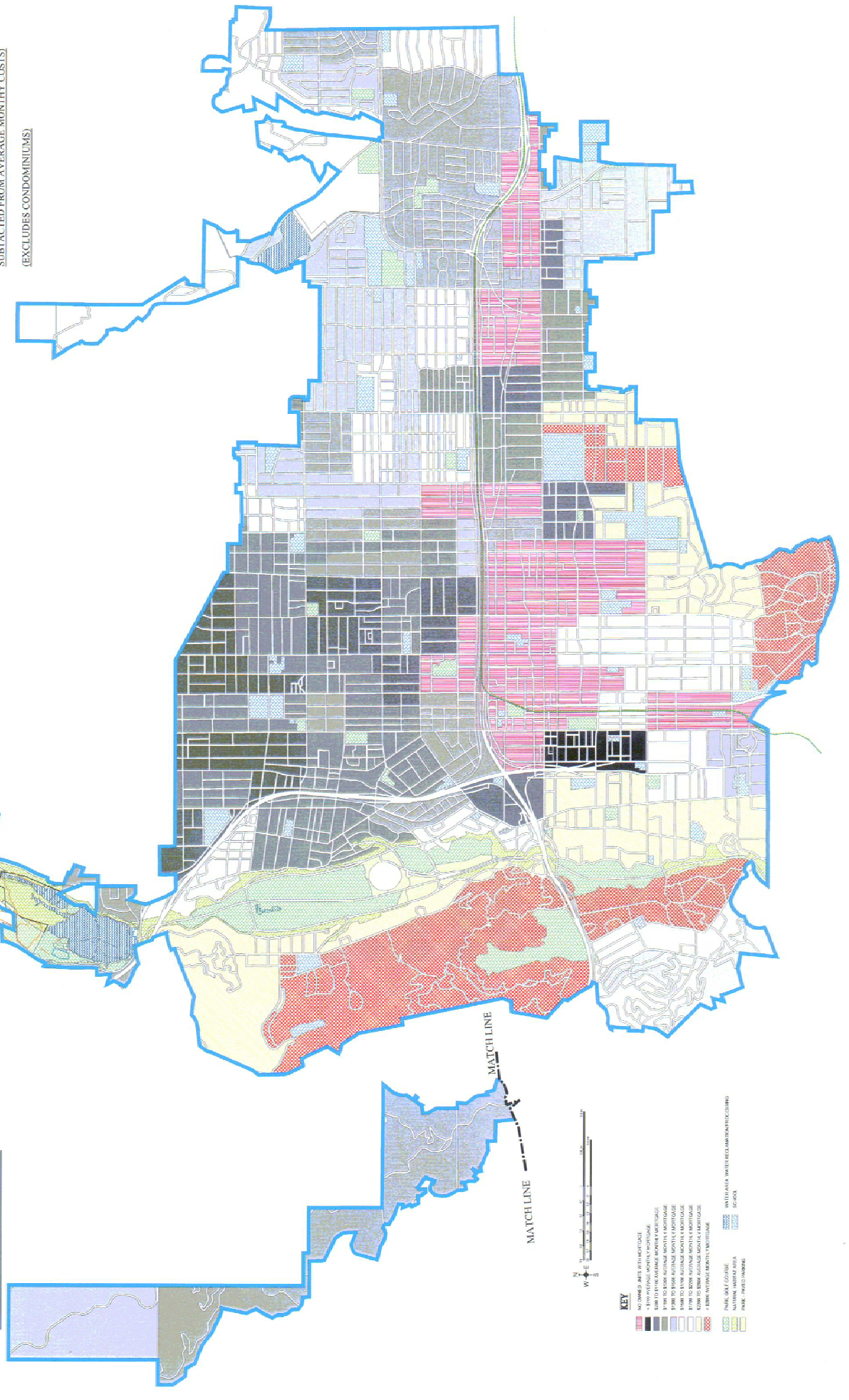
WITTRY JULY 2004

MATCH LINE

MATCH LINE

2000 AVERAGE MONTHLY MORTGAGE PAYMENTS

FROM 2000 CENSUS, BY BLOCK GROUP
 (AVERAGE PROPERTY TAX, UTILITY PAYMENTS, ETC. HAVE BEEN
 SUBTRACTED FROM AVERAGE MONTHLY COSTS)
 (EXCLUDES CONDOMINIUMS)



- KEY**
- NO SHOWN: NO DATA FOR MORTGAGE
 - 5 TO 10 PERCENT: MOSTLY 15% MORTGAGE
 - 10 TO 15 PERCENT: MOSTLY 10% MORTGAGE
 - 15 TO 20 PERCENT: MOSTLY 10% MORTGAGE
 - 20 TO 25 PERCENT: MOSTLY 10% MORTGAGE
 - 25 TO 30 PERCENT: MOSTLY 10% MORTGAGE
 - 30 TO 35 PERCENT: MOSTLY 10% MORTGAGE
 - 35 TO 40 PERCENT: MOSTLY 10% MORTGAGE
 - 40 TO 45 PERCENT: MOSTLY 10% MORTGAGE
 - 45 TO 50 PERCENT: MOSTLY 10% MORTGAGE
 - 50 TO 55 PERCENT: MOSTLY 10% MORTGAGE
 - 55 TO 60 PERCENT: MOSTLY 10% MORTGAGE
 - 60 TO 65 PERCENT: MOSTLY 10% MORTGAGE
 - 65 TO 70 PERCENT: MOSTLY 10% MORTGAGE
 - 70 TO 75 PERCENT: MOSTLY 10% MORTGAGE
 - 75 TO 80 PERCENT: MOSTLY 10% MORTGAGE
 - 80 TO 85 PERCENT: MOSTLY 10% MORTGAGE
 - 85 TO 90 PERCENT: MOSTLY 10% MORTGAGE
 - 90 TO 95 PERCENT: MOSTLY 10% MORTGAGE
 - 95 TO 100 PERCENT: MOSTLY 10% MORTGAGE