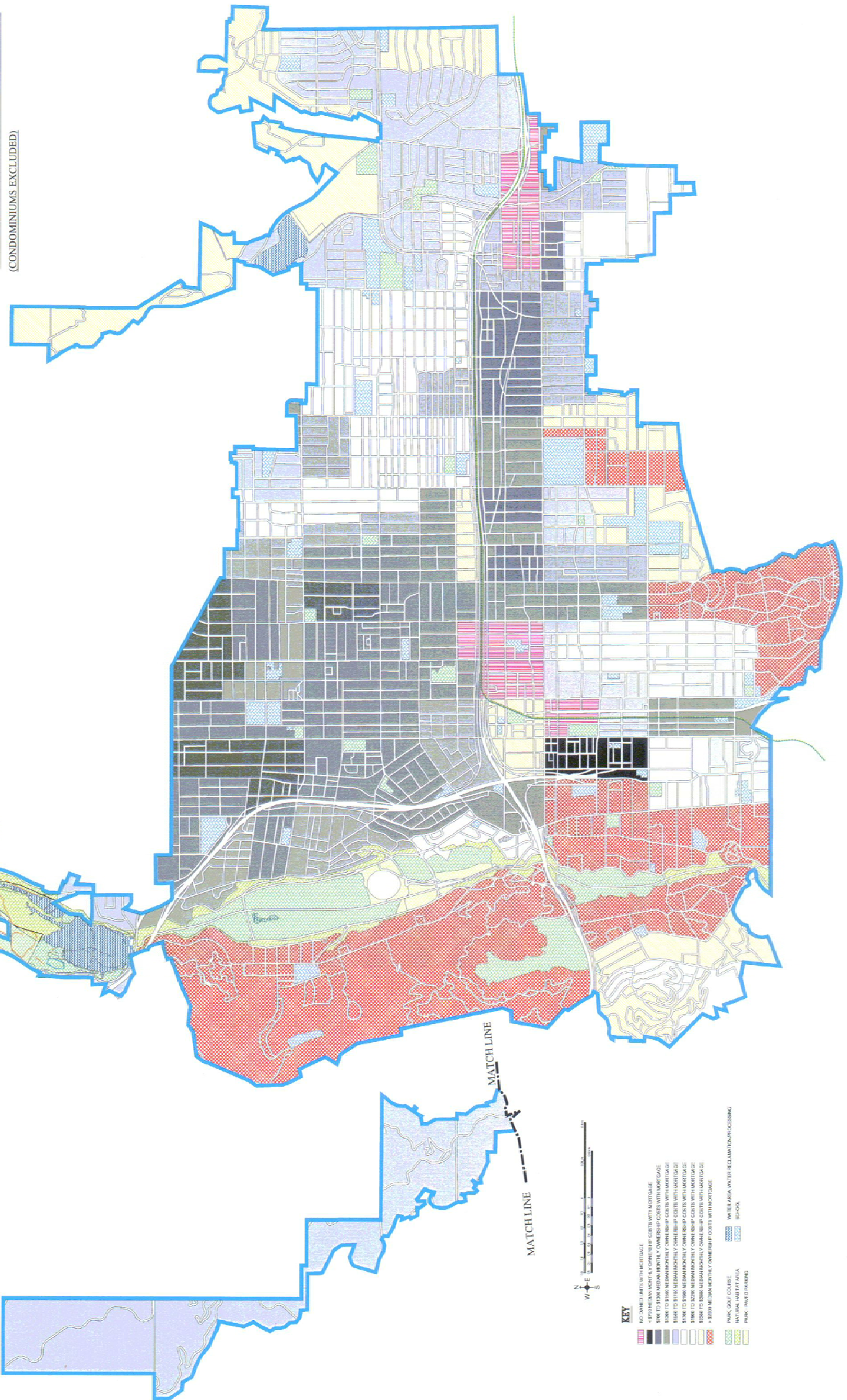


2000 MEDIAN MONTHLY OWNERSHIP COSTS WITH MORTGAGE

FROM 2000 CENSUS, BY BLOCK GROUP.
 (MONTHLY COSTS INCLUDES MORTGAGE PAYMENTS, PROPERTY TAX,
 UTILITIES, ASSOCIATION FEES & OWNER INSURANCE)
 (CONDOMINIUMS EXCLUDED)

MAP PROVIDED BY
PNC
 PARADESIA NEIGHBORHOOD COALITION
 P.O. BOX 1327 PARADESIA, CALIFORNIA 91115
 PREPARED BY
WITURY 11/12/2008



- KEY**
- NO DATA / PARTIAL BLOCK
 - \$0 TO \$99 MONTHLY COSTS WITH MORTGAGE
 - \$100 TO \$199 MONTHLY COSTS WITH MORTGAGE
 - \$200 TO \$299 MONTHLY COSTS WITH MORTGAGE
 - \$300 TO \$399 MONTHLY COSTS WITH MORTGAGE
 - \$400 TO \$499 MONTHLY COSTS WITH MORTGAGE
 - \$500 TO \$599 MONTHLY COSTS WITH MORTGAGE
 - \$600 TO \$699 MONTHLY COSTS WITH MORTGAGE
 - \$700 TO \$799 MONTHLY COSTS WITH MORTGAGE
 - \$800 TO \$899 MONTHLY COSTS WITH MORTGAGE
 - \$900 TO \$999 MONTHLY COSTS WITH MORTGAGE
 - \$1,000 TO \$1,499 MONTHLY COSTS WITH MORTGAGE
 - \$1,500 TO \$1,999 MONTHLY COSTS WITH MORTGAGE
 - \$2,000 TO \$2,499 MONTHLY COSTS WITH MORTGAGE
 - \$2,500 TO \$2,999 MONTHLY COSTS WITH MORTGAGE
 - \$3,000 TO \$3,499 MONTHLY COSTS WITH MORTGAGE
 - \$3,500 TO \$3,999 MONTHLY COSTS WITH MORTGAGE
 - PARK / GOLF COURSE
 - PARK / GOLF COURSE
 - NATIONAL MARKET AREA
 - HIGHWAY
 - HIGHWAY
 - WATER AREA WITH RECREATION FACILITIES
 - SCHOOL
 - SCHOOL
 - PARK / RECREATION AREA