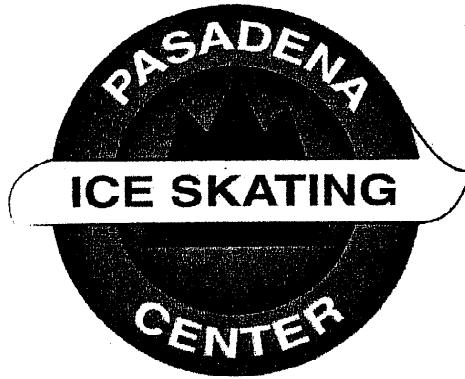


MATERIALS FROM

COUNCIL MEETING OF

JULY 18, 2005



310 East Green Street
Pasadena, CA 91101

626-578-0801

WWW.SKATEPASADENA.COM

July 2005

The coolest place in town
since 1976, with over
3 Million visitors having fun!!!

Public Skating Sessions Daily

07/18/2005

Item 3.A.

Handout by staff

Teams, Clubs and Groups that use Pasadena Ice Skating Center

CAL STATE HOCKEY TEAM
USC WOMEN'S HOCKEY
PASADENA HOCKEY ASSOCIATION
PASADENA FIGURE SKATING CLUB
PISC IN-HOUSE YOUTH HOCKEY LEAGUE
PISC IN-HOUSE MENS LEAGUE
VARIOUS BROOMBALL TEAMS
ADULT PICK UP LEAGUE
ADULT COFFE CLUB
LEARN TO SKATE PROGRAMS
JPL CHRISTMAS PARTIES

Pasadena Skaters Wall of Success

Peggy Fleming

Raised in Pasadena
Olympic and World Champion 1965-1968

Sasha Cohen

Started skating at the Pasadena Ice Skating Center
World and Olympic Medalist 2002-2005

Bret Sterling

Started skating hockey through the Pasadena Maple Leafs
US National Team 1999-2004
USA Hockey IIHF World Team Gold Medalist 2004
Colorado College 2001-2006
Finalist for the Hobey Baker Award 2005
Drafted by the NHL Atlanta Thrashers 2004

Angela Ruggiero

Played for the Pasadena Maple Leafs
US Women's National Team 1999
Graduate Harvard University 2006
USA Hockey IIHF World Team Gold Medalist 2002-2005
2002 Olympic Gold Medalist Women's Hockey

John Kemp

Started with the Pasadena Maple Leafs at 4 yrs old
3 time US National Tier 1 Gold Medalist 2000-2003
US National Team Member 2004
USA Hockey International Team Gold Medalist 2003
1st Round Draft Pick USHL 2005 Indiana Ice

**Skaters Who Have done Commercials / Movie
Scenes / Clinics at the
Pasadena Ice Skating Center**

Scott Hamilton
Tai Babylonia & Randy Gardner
Dorothy Hamill
Sasha Cohen
Nicole Bobek
Tara Lipinski
Michelle Kwan
Christopher Bowman
Nancy Kerrigan
Debbie Thomas
Kathy Casey - USA Olympic Coach
Wendy Zang - Chinas' Olympic Coach
Frank Carroll - Olympic Coach
Sara Karahara - 2 time Emmy Winner
Olympic Choreographer &
Scott Hamilton TV Special

**Commercials and Movies that have used the
Pasadena Ice Skating Center
in just the past few years:**

NIKE - 2004

MCI - 2004

BARBIE DOLL - 2004

with Michelle Kwan

CAMPBELL SOUP - 2005

HYUNDAI - 2004

THE SKATING EDGE

ALKA SELTZER - 2002

NEW YORK LIFE - 2002

MCDONALD'S - 2000

DISCOVERY CHANNEL - 2002

BLUE CROSS

*plus many other movie, documentary and
educational productions.*

**PASADENA ICE SKATING CENTER
PARTICIPATES IN THE ADOPT A SCHOOL
PROGRAM ANNUALLY
FRANKLIN ELEMENTARY SCHOOL**

COMPETITIONS

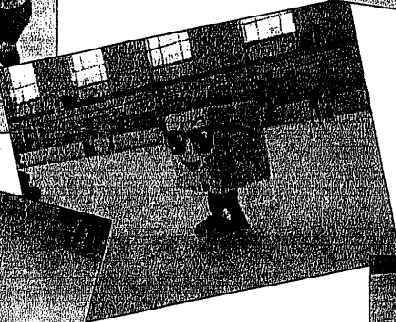
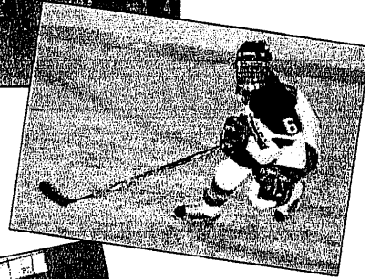
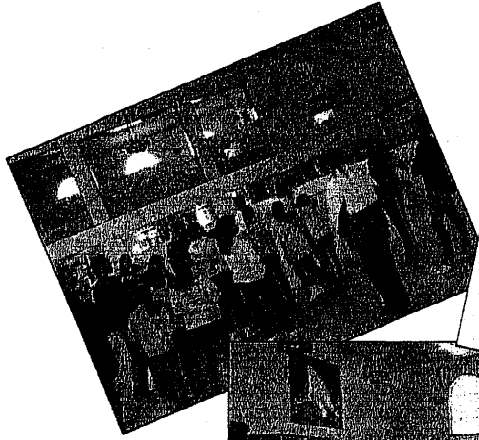
Ice Skating Institute World Championships

Ice Skating Institute West Coast Championships

Ice Skating Institute District Championships

United States Figure Skating Open Competitions

USA Hockey Tournaments



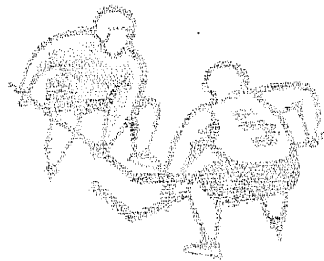
Local Schools and Church Groups that enjoy the fun of ice skating at the Pasadena Ice Skating Center, many of which use the activity as fund raising events.

Group name	Last 12 Months
Allendale Elem	310
Altadena Boys & Girl Scouts	25
Altadena Boys & Girls Aca.	25
Altadena Christian Children's	12
Altadena Town & Country Club	30
Altadena United Meth.	25
Anderson Adventure Camp	189
Angeles Temple	30
Anita Oaks	60
Arcadia After Prom	50
Arcadia Methodist Hosp	35
Arcadia P&R	100
Arcadia Unified School	120
Armenian Brotherhood	60
Baptist Youth Convention	33
Belvedere Park	34
Bethlehem Academy	100
Birthday Party's	3,250
Boy Scouts	30
Byung M. Park	30
Cal State LA	30
Cal Tech	325
Calvary Chapel	135
Calvary Church	40
Camp Aloto Fun	86
Central Coast Youth Christ	45
Chandler School	165
Children's Academic	110
Christ Center Sch.	48

Church of Latter Day Saints	55
Circle K	70
City of Arcadia	137
City of South El Monte	35
City of South Pasadena	45
Crescenta Valley Adventist	400
Eagle Rock High	50
ECC Academy	40
El Monte Community Center	95
Erti Chen	28
Evergreen Baptist Church	0
Excellence in Education	140
Five Acres	90
Foothill	60
Franklin High	50
Fremont School	90
Gamma Fox	200
Garfield High Sch.	55
Girl Scouts	34
Glendale KVM C	55
Hammel St. Elem.(6/16)	120
Harambee Prep Sch.	93
Health Program	40
Hillside	55
Imani	50
INC	50
Jefferson Elem.	80
Kid's Club	40
La Canada Pres. Church	50
Laule'a Tri-hi-T (fundraiser)	50



Learns Program	270
Lim Luie	46
Lincoln Magnet	75
Linda Vista	45
Mark Kepple High Sch.(fund)	266
Mission Church	30
Monterey Highland Elem.	38
Montessori	100
Montrose Church	30
Neo Fine Arts	50
New Covenant Academy	75
New Directions	20
New Horizons Sch.	54
New Life Christian Church	15
Oakknoll	130
Occidental College	25
Pacific Clinics	40
Pamela Park	40
Pasadena Christian Sch/	35
Patty Redmond	40
PCC Honors	47
Phi Delta Chi	30
Poly Cross Country	25
Prep Academy	100
Presbyterian Church	50
Private Group	100
Ramona Elem.	112
Richetts House	40
Rio Hondo Prep	105
Rosemary Children's Services	15
Rosemead High School (fund)	112
San Gabriel High	180
San Marino Camp Lucy	110
San Marino Camp Lucy	100
San Rafael Elem.	70



San Rafael Learns Program	106
Santa Anita YMCA	50
Sharon T. Koh (church)	50
Sierra Madre	30
Sierra Madre Cong. Church	45
Spanish American Church	50
St. Andrew's Pres. Church	35
St. Gregory School	25
Sunrise ISP	70
Sycamore Grove Sch.	20
Ted Szeto	50
Temple City High Sch.	50
Temple City HS (fund)	50
Top Kids Center	45
USC	180
Valley Comm. Church	62
View Park Prep	118
Walden Sch.	85
Washington Learns Program	170
Washington Middle Sch.	140
Waverly Elem.	119
WCIV	135
White Memorial Adventist Sch.	50
Willard Elem. Sch.	95
Willard Learn's Program	110
Wilson Elem. (fund)	107
Wilson High Sch.	100
Wilson's Learns Program	100
YMCA La Canada	100
YMCA Moreno Valley	85
YMCA San Gabriel	78
Young Nak Jr. High	50
Youth Day Camp	60
Zang	146

13,275



Expanded Community Programs for the New Facility

School Field Trips
Park & Recreation Programs
Boy's & Girl's Clubs
Theater on Ice
Boy's & Girl's Scouts
Senior Groups
Home School PE
Special Olympics (Special Skaters)
Outreach Programs
Fund Raisers
Ice Shows
Learn to Skate Programs
Hockey & Speed Skating
Broomball Leagues



Business Week Architectural Record Awards Winning Workplaces

The McGraw-Hill Companies

BusinessWeek



The Albert Group Architects

Nov. 4, 2002

Ice in the desert, long a fantasy, has become an affordable reality. Ice Station Valencia, a three-rink arena built in the midst of a Southern California energy crisis would seem at first a folly. But this folly is built on innovative ideas and wisdom garnered from decades of designing around the challenges of deserts, draughts, energy crises and earthquake faults. This is a community center that serves thousands of residents with the gracious ease of a southern matron.

This award-winning building, with its beautiful landscaping, rising stately in the midst of golden hills and scrub brush, issues a challenge to designers and offers solutions and inspiration as well. To build in our modern age is to be forced to look down the road at a future where energy conservation is no longer merely an option, but a necessity.

Ice Station Valencia, designed by Stephen Albert, principal of the Albert Group of Architects in Culver City, California, was endowed with every technological advantage modern engineering could conceive of in order to reduce its energy consumption. The result: thirty-six percent less energy used on three rinks, than is ordinarily used on one standard rink.

The use of an innovative cooling system, natural lighting and careful analysis of the functions the building contains led to a host of benefits, including lower operating costs, higher property values, cleaner air and less dependence on foreign oil. Benefits we can all enjoy.

The Albert Group, in conjunction with Harold Orum the electrical, mechanical and ice systems engineer, has created a modern wonder, a cool oasis in the heat. The combination of Stephen Albert's graceful, community-oriented architecture, that takes advantage of every beam of light to cut down on the need for electrical illumination, and innovations in the design of the ice systems has led to a new thought process in design and engineering.

Ice Station Valencia is a multi-use structure with not only three rinks, but also, a world-class restaurant, pro-shop, state-of-the-art showers and lockers and banquet facilities. To enclose all of these functions into one energy efficient building required care and forethought.

In 2001 this care and forethought was recognized with an award from the Savings By Design Program, who, in partnership with the AIA has set out to; "...recognize commercial projects that successfully integrate architectural excellence and energy efficient design." In awarding Ice Station Valencia both an AIA design award and an award for energy efficiency, the jury concluded, "the design team didn't overlook anything in their energy-efficient approach to enclosing a complex function.

Responsibility for the environment is now of primary importance as one of the new cornerstones of design philosophy. From the ground up, Ice Station Valencia epitomizes this new trend in thought. To create beautiful, welcoming spaces that exist in harmony with their surroundings is difficult. To do this while reducing their impact on the environment and creating new and innovative ways of conserving our natural resources at the same time requires entirely new tools for the modern architect.

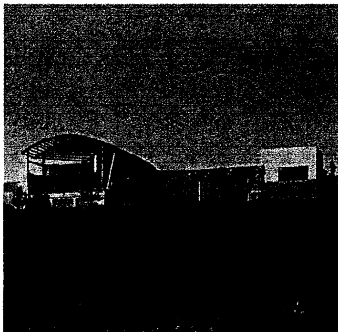
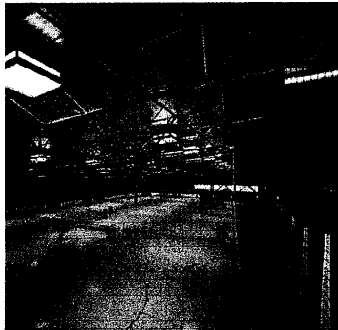
These are the challenges that modern designers and architects now face and this is the building to look to for a prime example of challenges met and solved.

This building is far more than merely innovative and energy efficient, however, this is a living, breathing part of the Santa Clarita Valley. This is a place where children try on their first ice skates and take their first hesitant steps into a future of Olympic or NHL potential.

07/18/2005

Item 3.A.

Handout by staff

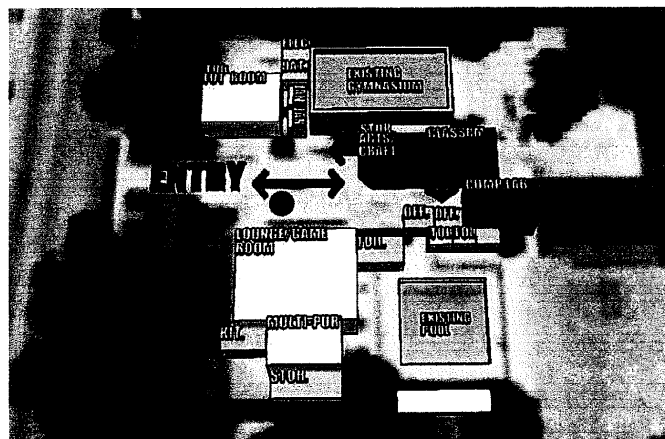
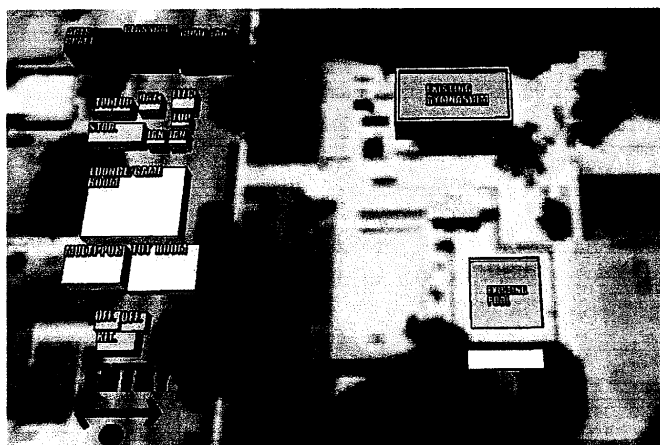


The design challenges presented by various facilities include creating seamless integration into the existing sites while responding to intensive use, construction technique, and design within a sensitive context. Through experience our firm has developed interactive management methods to reach a consensus on program goals to final building construction.

Our office process includes **Five Basic Services**

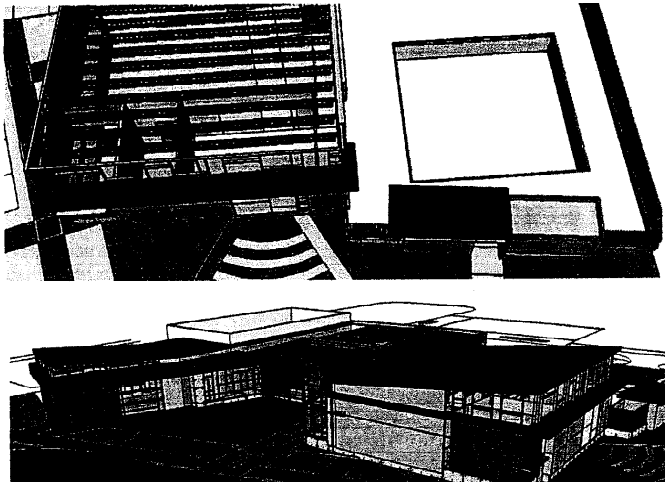
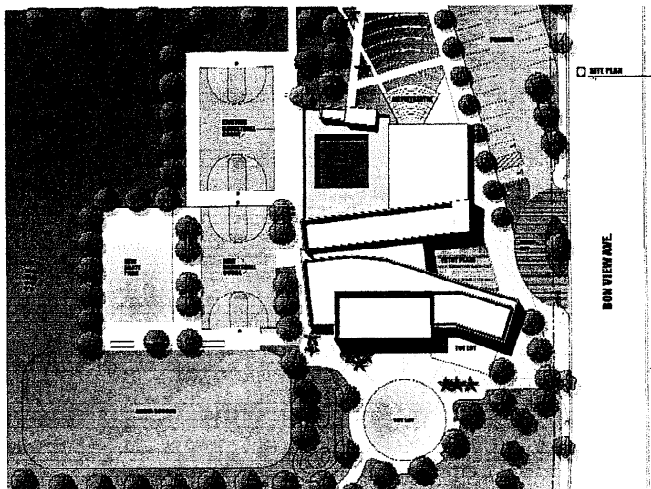
Programming and Concept Design:

The Albert Group Architect's initial approach to a project is to listen, establish, and understand the Client's needs before developing design solutions. To assure that these concerns are incorporated in the final building design we have established an ever-improving system that takes advantage of new technologies

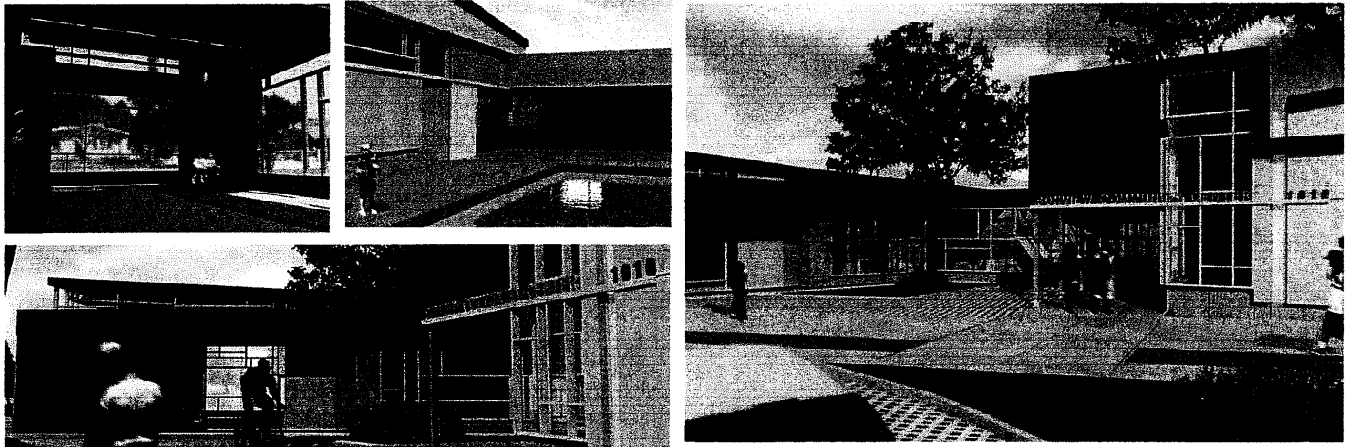


Schematic Design:

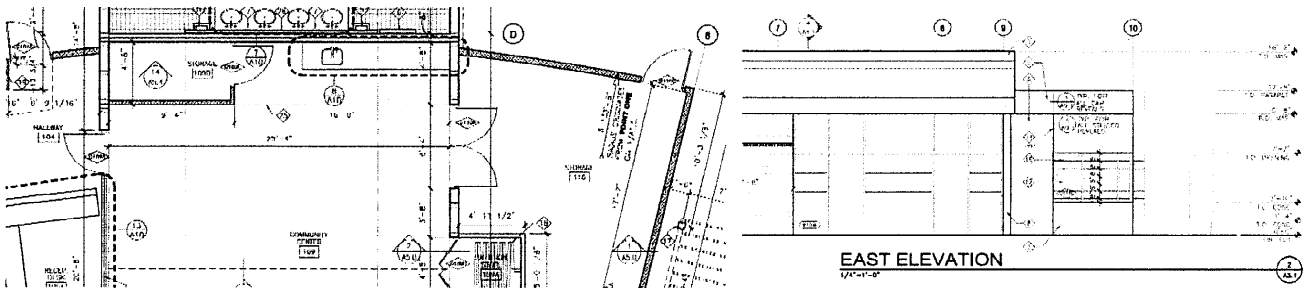
Study of the visual, technical, and material language of architecture. Frontend Loading of the design process to include structure and mechanical systems.



Design Development:
Integration of the building technologies



Construction Documents:
Analysis and representation of the assemblies that determine the completed facility



Construction Administration:
Coordination of the process to realize the facility

