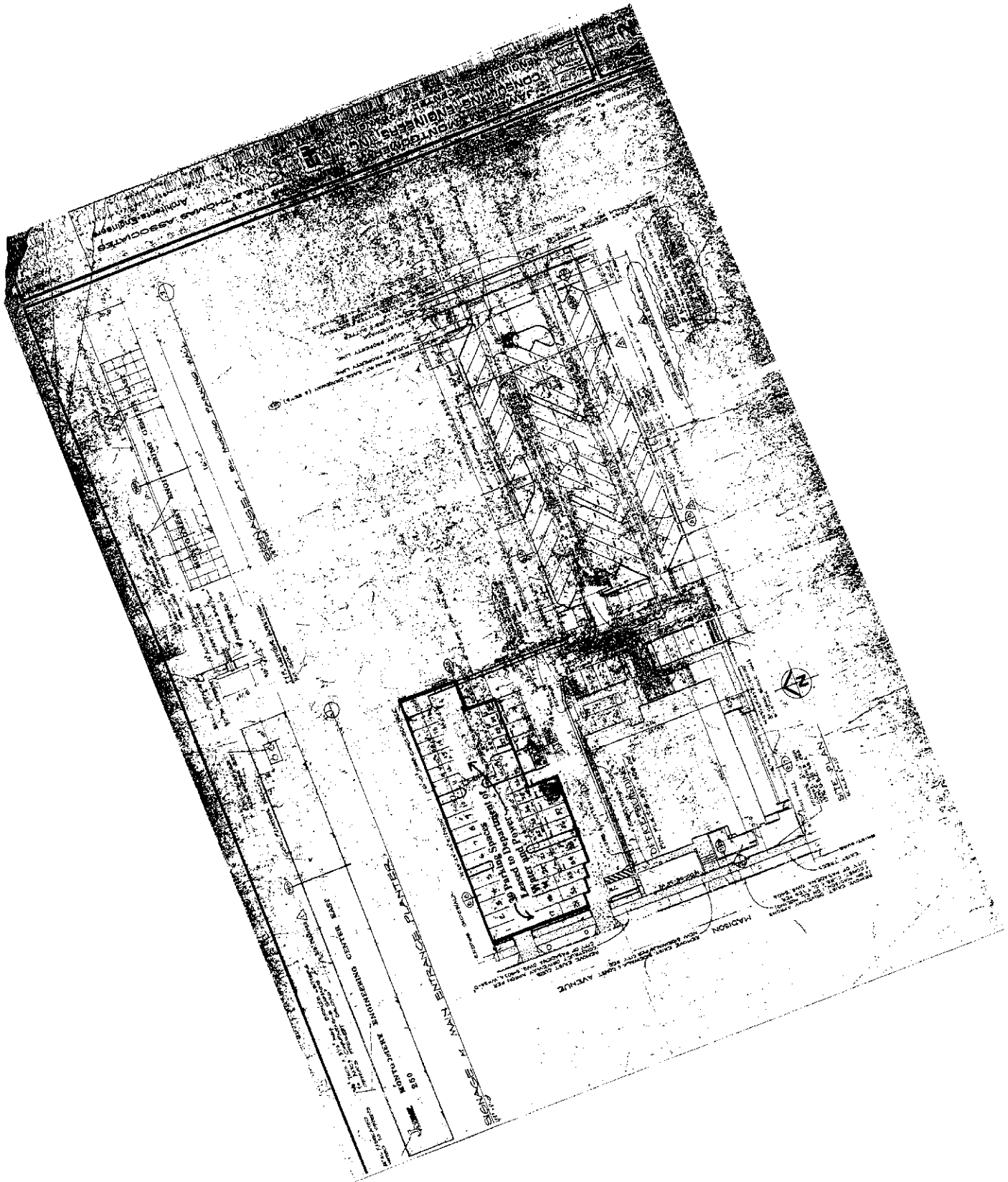


Attachment 7



ASSOCIATES
ARCHITECTS

CONSTRUCTION
DRAWING

MAIN ENTRANCE PLAZA



SCALE

200
FOOT SCALE

NOTES

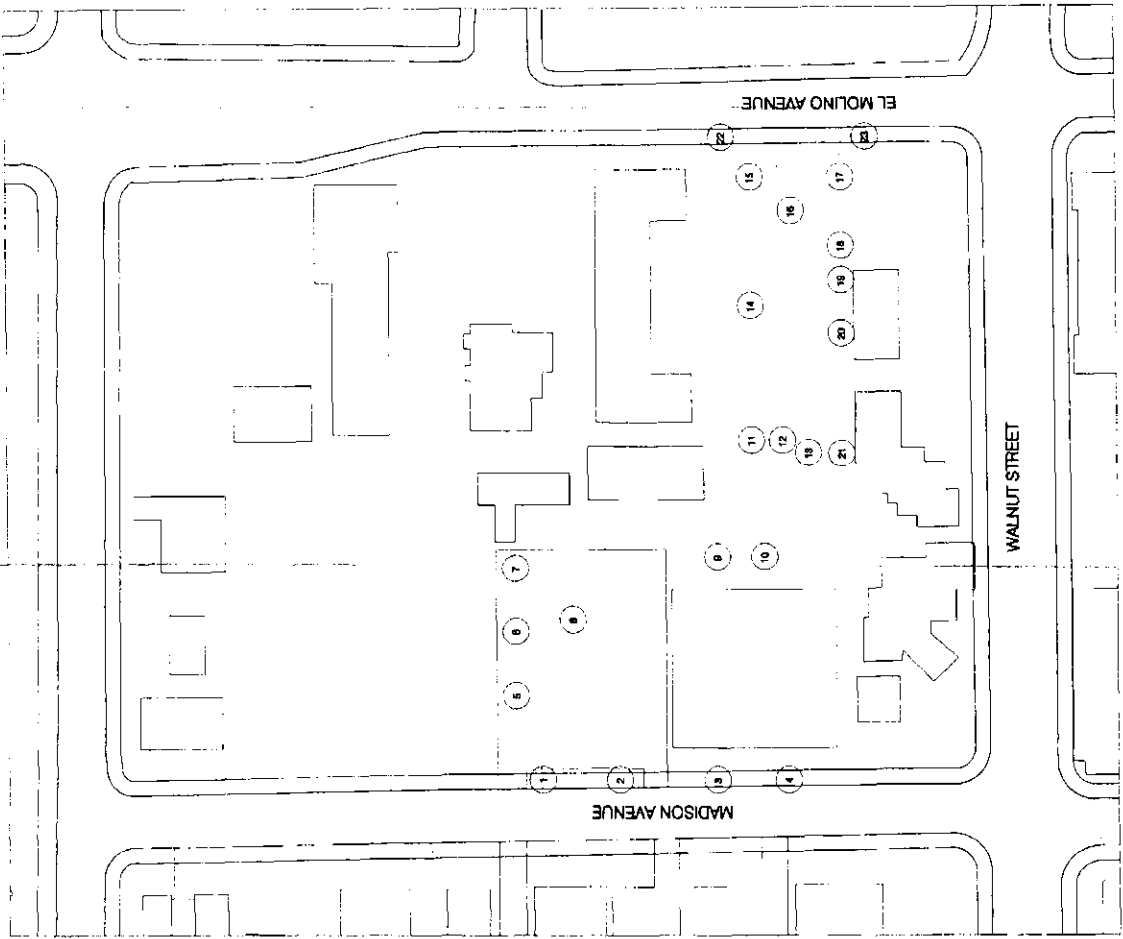


Project No.	1212-001
Client	Fuller Theological Seminary
Location	250 Madison Avenue, Pasadena, CA
Date	11/15/2017
Scale	AS SHOWN
Author	John E. P. Taylor
Checker	John E. P. Taylor
Project Manager	John E. P. Taylor
Scale	AS SHOWN

**TREE
INVENTORY
PLAN**

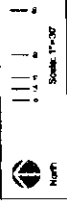
L-1

Plan Cover	12/04
Scale	AS SHOWN
Author	John E. P. Taylor
Checker	John E. P. Taylor
Project Manager	John E. P. Taylor
Scale	AS SHOWN



TREE LEGEND

Tree ID	Species	DBH (in)	Height (ft)	Health	Notes
1
2
3
4
5
6
7
8
9
10
11
12
13
14
15
16
17
18
19
20
21



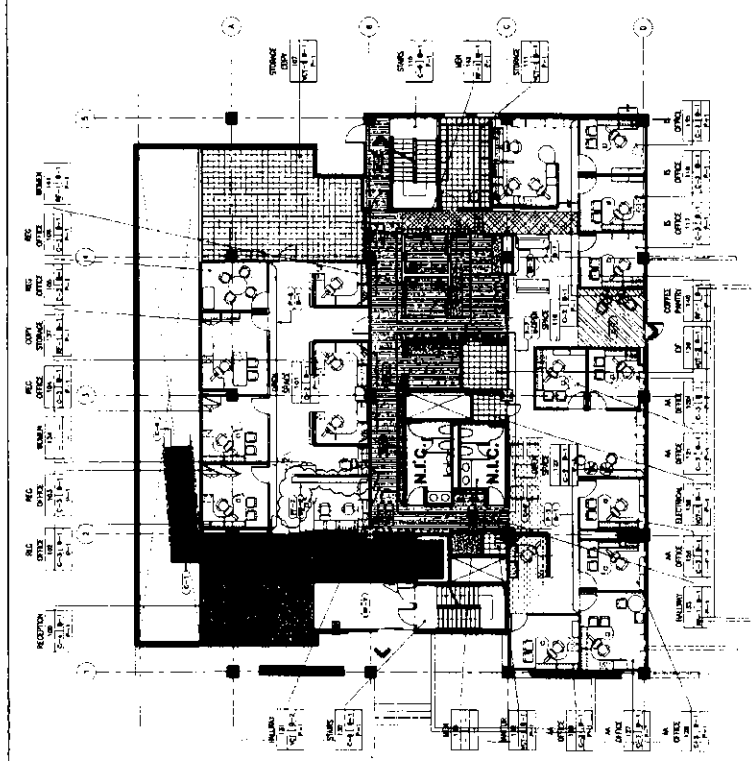
JOHNSON FAIR
 ARCHITECTURE - PLANNING - INTERIOR
 400 WILSON DRIVE
 FAYETTEVILLE, MISSISSIPPI 39305
 PHONE (601) 833-1100
 FACSIMILE (601) 833-1172
 A CALVERT COMPANY

FULLER THEOLOGICAL SEMINARY
 1000 W. PARKWAY, OAK RIDGE, TENN. 37830

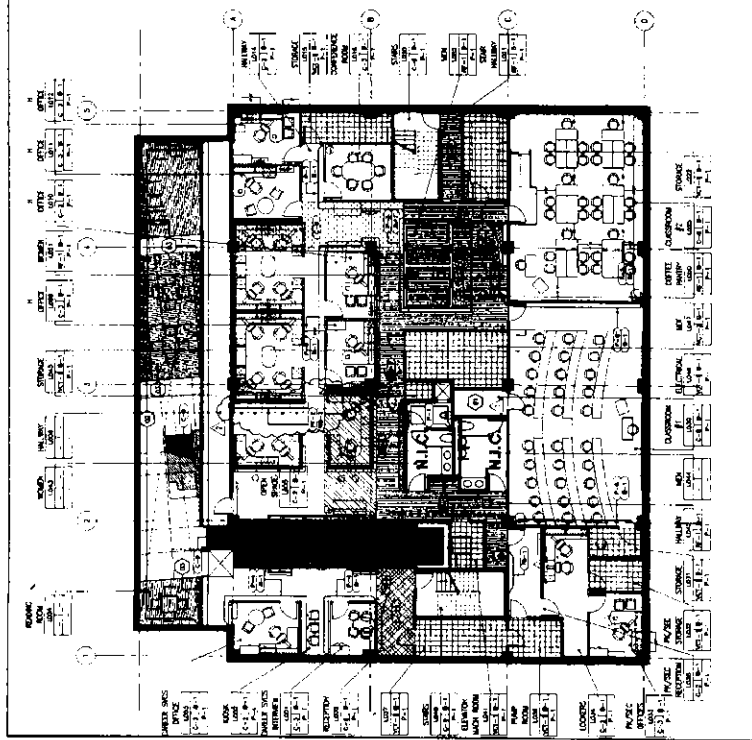
T50

LOWER LEVEL AND GROUND FLOOR FINISH PLAN

DATE: 10/20/83
 DRAWN BY: J. FAIR
 CHECKED BY: J. FAIR
 PROJECT NUMBER: T50



2 SECOND BASEMENT FLOOR FINISH PLAN
 SCALE: 1/8" = 1'-0"



1 LOWER LEVEL FINISH PLAN
 SCALE: 1/8" = 1'-0"

FINISH SCHEDULE

NO.	DESCRIPTION	QTY	UNIT	PRICE	TOTAL
1	PAINT				
2	CEILING				
3	FLOOR				
4	WALL				
5	DOOR				
6	WINDOW				
7	STAIR				
8	ROOF				
9	MECHANICAL				
10	ELECTRICAL				
11	PLUMBING				
12	CONCRETE				
13	BRICK				
14	GLASS				
15	IRON				
16	COPPER				
17	ZINC				
18	ALUMINUM				
19	STEEL				
20	WOOD				
21	CEMENT				
22	SAND				
23	GRAVEL				
24	ASPHALT				
25	PAVING				
26	LANDSCAPE				
27	IRRIGATION				
28	SEWER				
29	WATER				
30	HEATING				
31	Cooling				
32	Lighting				
33	Sound				
34	Security				
35	Accessibility				
36	Other				

KEY NOTES

1. SEE GENERAL NOTES SHEET T-100.
2. SEE FINISH SCHEDULE FOR MATERIALS AND METHODS.
3. SEE ARCHITECTURAL SPECIFICATIONS FOR MATERIALS AND METHODS.
4. SEE MECHANICAL AND ELECTRICAL PLANS FOR DETAILS.
5. SEE PLUMBING AND SANITARY PLANS FOR DETAILS.
6. SEE STRUCTURAL PLANS FOR DETAILS.
7. SEE LANDSCAPE ARCHITECTURE PLANS FOR DETAILS.
8. SEE CIVIL ENGINEERING PLANS FOR DETAILS.
9. SEE ENVIRONMENTAL ENGINEERING PLANS FOR DETAILS.
10. SEE HISTORIC PRESERVATION PLANS FOR DETAILS.
11. SEE ARCHITECTURAL RECORDS FOR DETAILS.
12. SEE ARCHITECTURAL RECORDS FOR DETAILS.
13. SEE ARCHITECTURAL RECORDS FOR DETAILS.
14. SEE ARCHITECTURAL RECORDS FOR DETAILS.
15. SEE ARCHITECTURAL RECORDS FOR DETAILS.
16. SEE ARCHITECTURAL RECORDS FOR DETAILS.
17. SEE ARCHITECTURAL RECORDS FOR DETAILS.
18. SEE ARCHITECTURAL RECORDS FOR DETAILS.
19. SEE ARCHITECTURAL RECORDS FOR DETAILS.
20. SEE ARCHITECTURAL RECORDS FOR DETAILS.
21. SEE ARCHITECTURAL RECORDS FOR DETAILS.
22. SEE ARCHITECTURAL RECORDS FOR DETAILS.
23. SEE ARCHITECTURAL RECORDS FOR DETAILS.
24. SEE ARCHITECTURAL RECORDS FOR DETAILS.
25. SEE ARCHITECTURAL RECORDS FOR DETAILS.
26. SEE ARCHITECTURAL RECORDS FOR DETAILS.
27. SEE ARCHITECTURAL RECORDS FOR DETAILS.
28. SEE ARCHITECTURAL RECORDS FOR DETAILS.
29. SEE ARCHITECTURAL RECORDS FOR DETAILS.
30. SEE ARCHITECTURAL RECORDS FOR DETAILS.
31. SEE ARCHITECTURAL RECORDS FOR DETAILS.
32. SEE ARCHITECTURAL RECORDS FOR DETAILS.
33. SEE ARCHITECTURAL RECORDS FOR DETAILS.
34. SEE ARCHITECTURAL RECORDS FOR DETAILS.
35. SEE ARCHITECTURAL RECORDS FOR DETAILS.
36. SEE ARCHITECTURAL RECORDS FOR DETAILS.

NOTES

1. SEE GENERAL NOTES SHEET T-100.
2. SEE FINISH SCHEDULE FOR MATERIALS AND METHODS.
3. SEE ARCHITECTURAL SPECIFICATIONS FOR MATERIALS AND METHODS.
4. SEE MECHANICAL AND ELECTRICAL PLANS FOR DETAILS.
5. SEE PLUMBING AND SANITARY PLANS FOR DETAILS.
6. SEE STRUCTURAL PLANS FOR DETAILS.
7. SEE LANDSCAPE ARCHITECTURE PLANS FOR DETAILS.
8. SEE CIVIL ENGINEERING PLANS FOR DETAILS.
9. SEE ENVIRONMENTAL ENGINEERING PLANS FOR DETAILS.
10. SEE HISTORIC PRESERVATION PLANS FOR DETAILS.
11. SEE ARCHITECTURAL RECORDS FOR DETAILS.
12. SEE ARCHITECTURAL RECORDS FOR DETAILS.
13. SEE ARCHITECTURAL RECORDS FOR DETAILS.
14. SEE ARCHITECTURAL RECORDS FOR DETAILS.
15. SEE ARCHITECTURAL RECORDS FOR DETAILS.
16. SEE ARCHITECTURAL RECORDS FOR DETAILS.
17. SEE ARCHITECTURAL RECORDS FOR DETAILS.
18. SEE ARCHITECTURAL RECORDS FOR DETAILS.
19. SEE ARCHITECTURAL RECORDS FOR DETAILS.
20. SEE ARCHITECTURAL RECORDS FOR DETAILS.
21. SEE ARCHITECTURAL RECORDS FOR DETAILS.
22. SEE ARCHITECTURAL RECORDS FOR DETAILS.
23. SEE ARCHITECTURAL RECORDS FOR DETAILS.
24. SEE ARCHITECTURAL RECORDS FOR DETAILS.
25. SEE ARCHITECTURAL RECORDS FOR DETAILS.
26. SEE ARCHITECTURAL RECORDS FOR DETAILS.
27. SEE ARCHITECTURAL RECORDS FOR DETAILS.
28. SEE ARCHITECTURAL RECORDS FOR DETAILS.
29. SEE ARCHITECTURAL RECORDS FOR DETAILS.
30. SEE ARCHITECTURAL RECORDS FOR DETAILS.
31. SEE ARCHITECTURAL RECORDS FOR DETAILS.
32. SEE ARCHITECTURAL RECORDS FOR DETAILS.
33. SEE ARCHITECTURAL RECORDS FOR DETAILS.
34. SEE ARCHITECTURAL RECORDS FOR DETAILS.
35. SEE ARCHITECTURAL RECORDS FOR DETAILS.
36. SEE ARCHITECTURAL RECORDS FOR DETAILS.

