



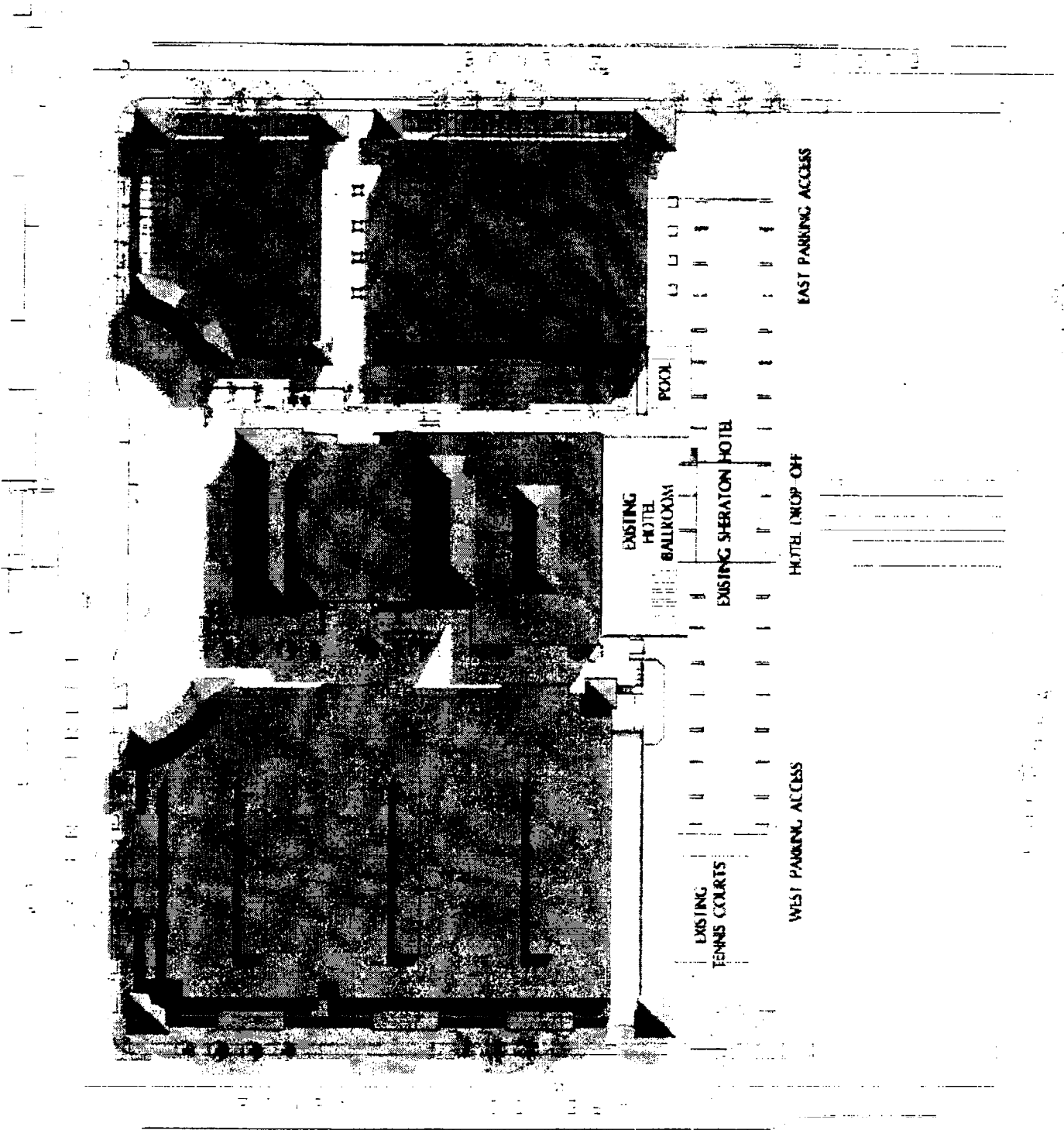
Appendix C
Shadow Analysis

APPENDIX C: SHADOW ANALYSIS

Fentress Bradburn Architects Ltd., the architect of the design presented in the EIR, conducted a shadow analysis based on the proposed design using computer modeling of sunlight conditions during three times of day at four times of year. The results of this analysis are contained herein. A site plan view is shown of shadow conditions for each scenario as follows:

- March/September 21st, 9 A.M.
- March/September 21st, 12 Noon.
- March/September 21st, 3 P.M.
- July 21st, 9 A.M.
- July 21st, 12 Noon.
- July 21st, 3 P.M.
- December 21st, 9 A.M.
- December 21st, 12 Noon.
- December 21st, 3 P.M.

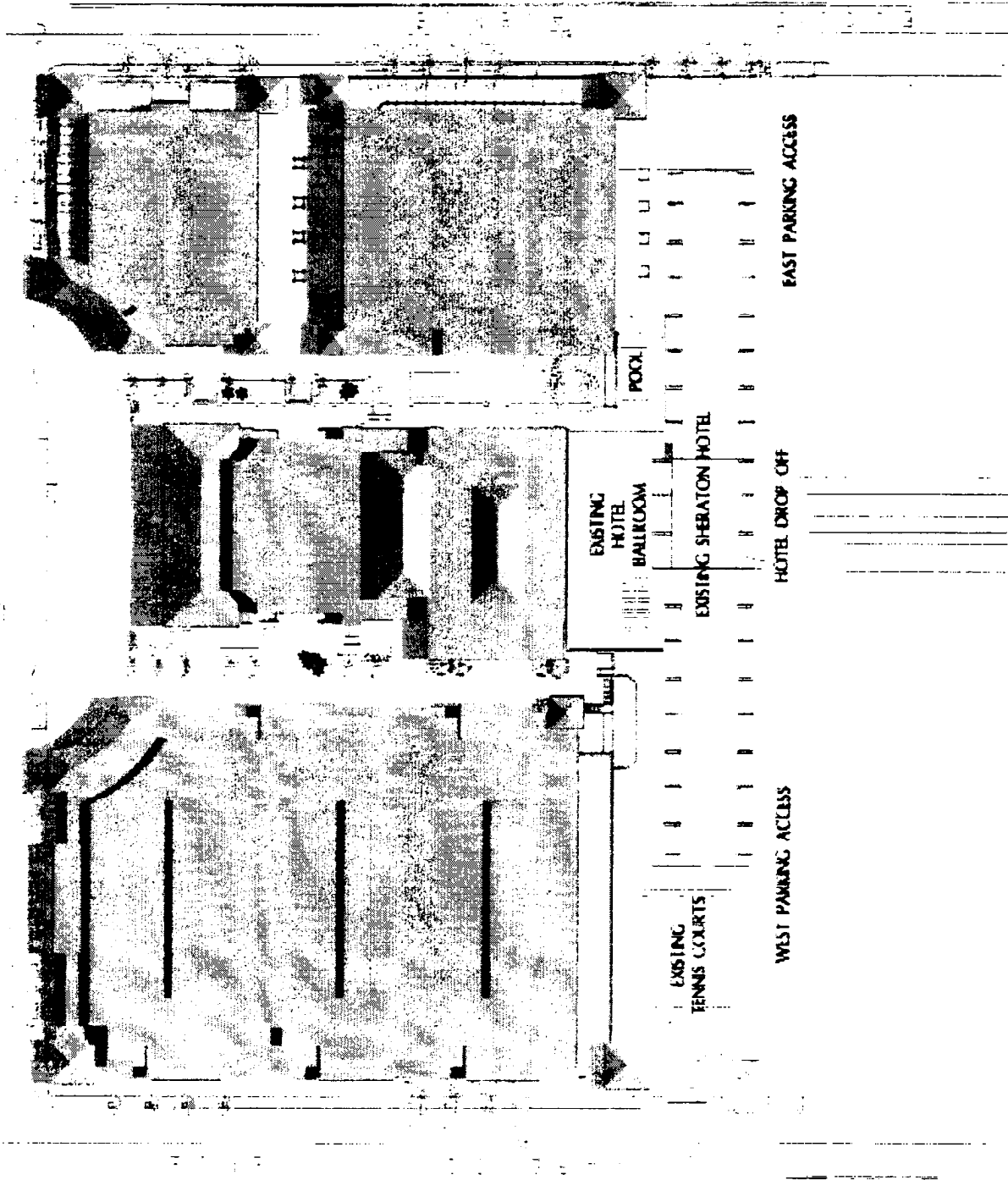
March/Sept 21 9:00 am



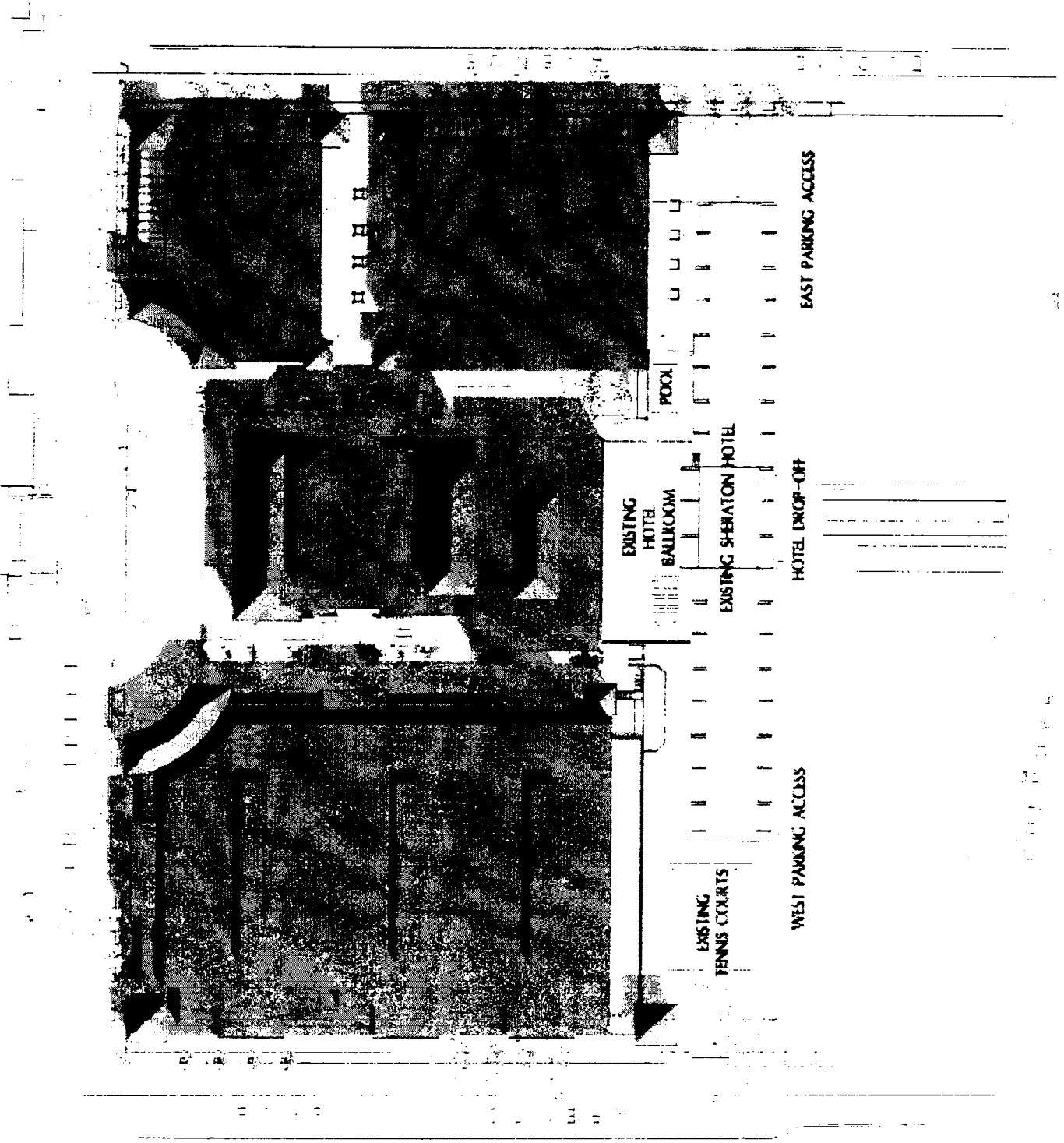
DATE: 03/21/00

01/01

March/Sept 21 12:00 pm

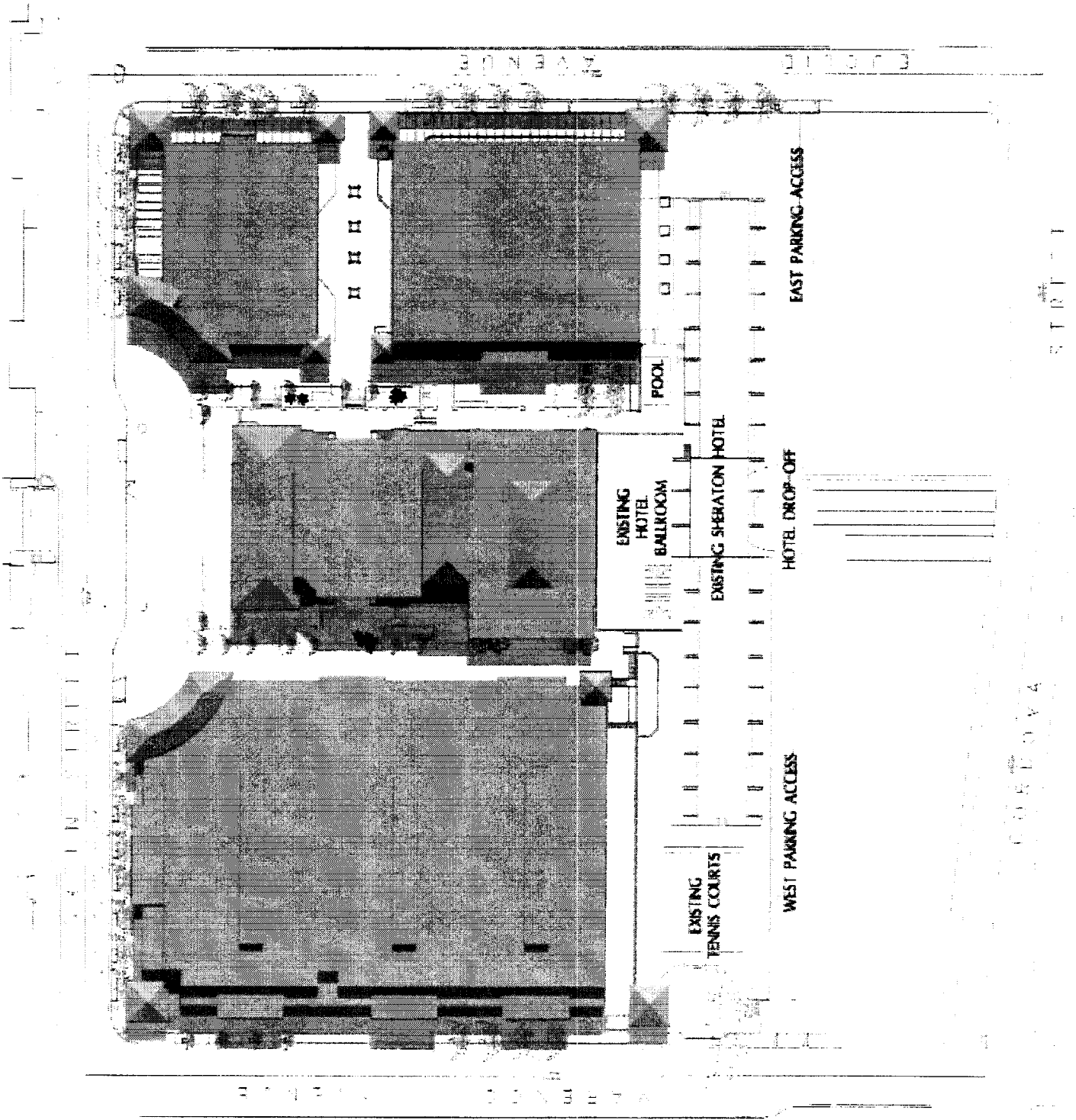


March/Sept 21 3:00 pm



10/1/01

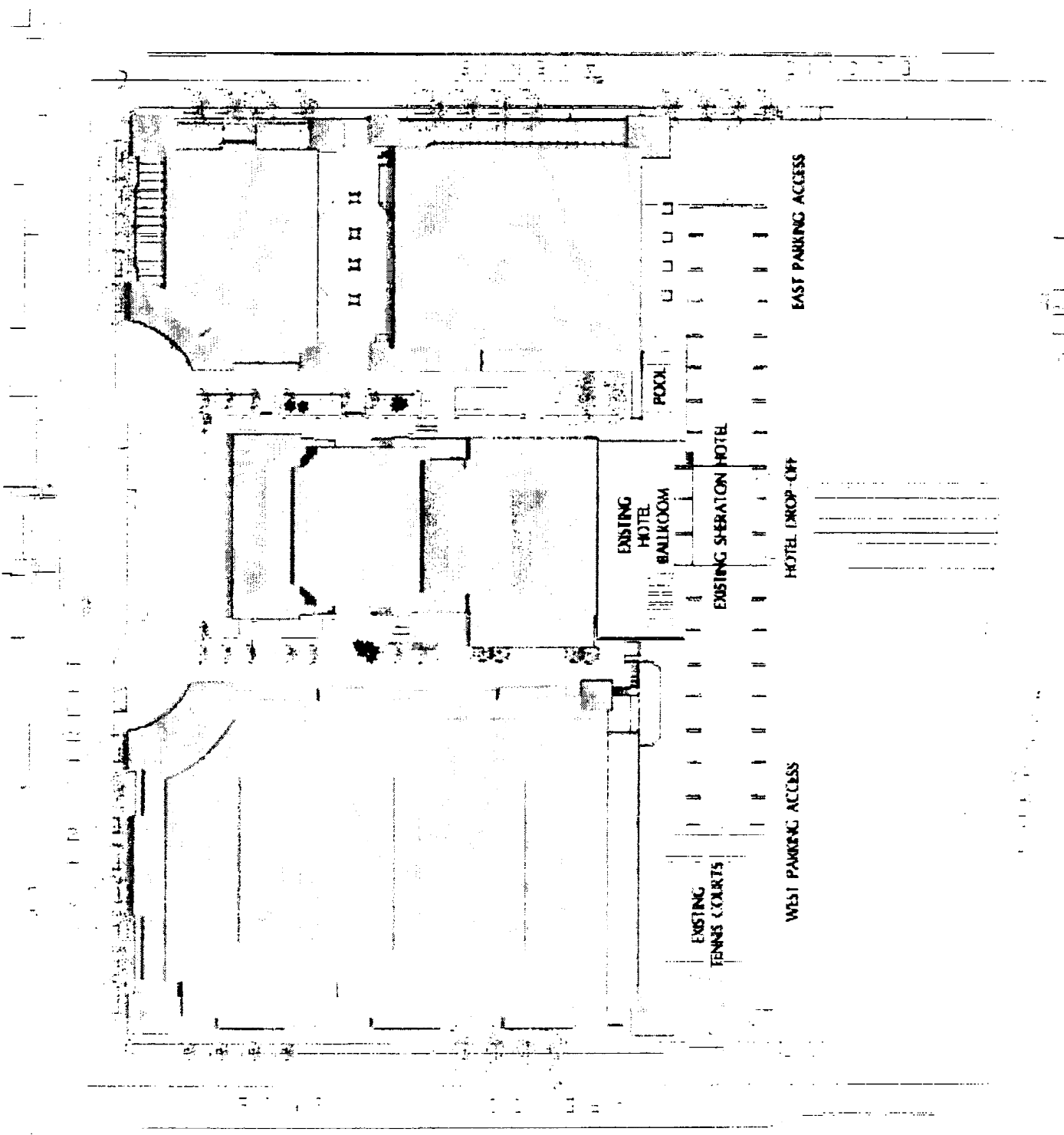
July 21 9:00 am



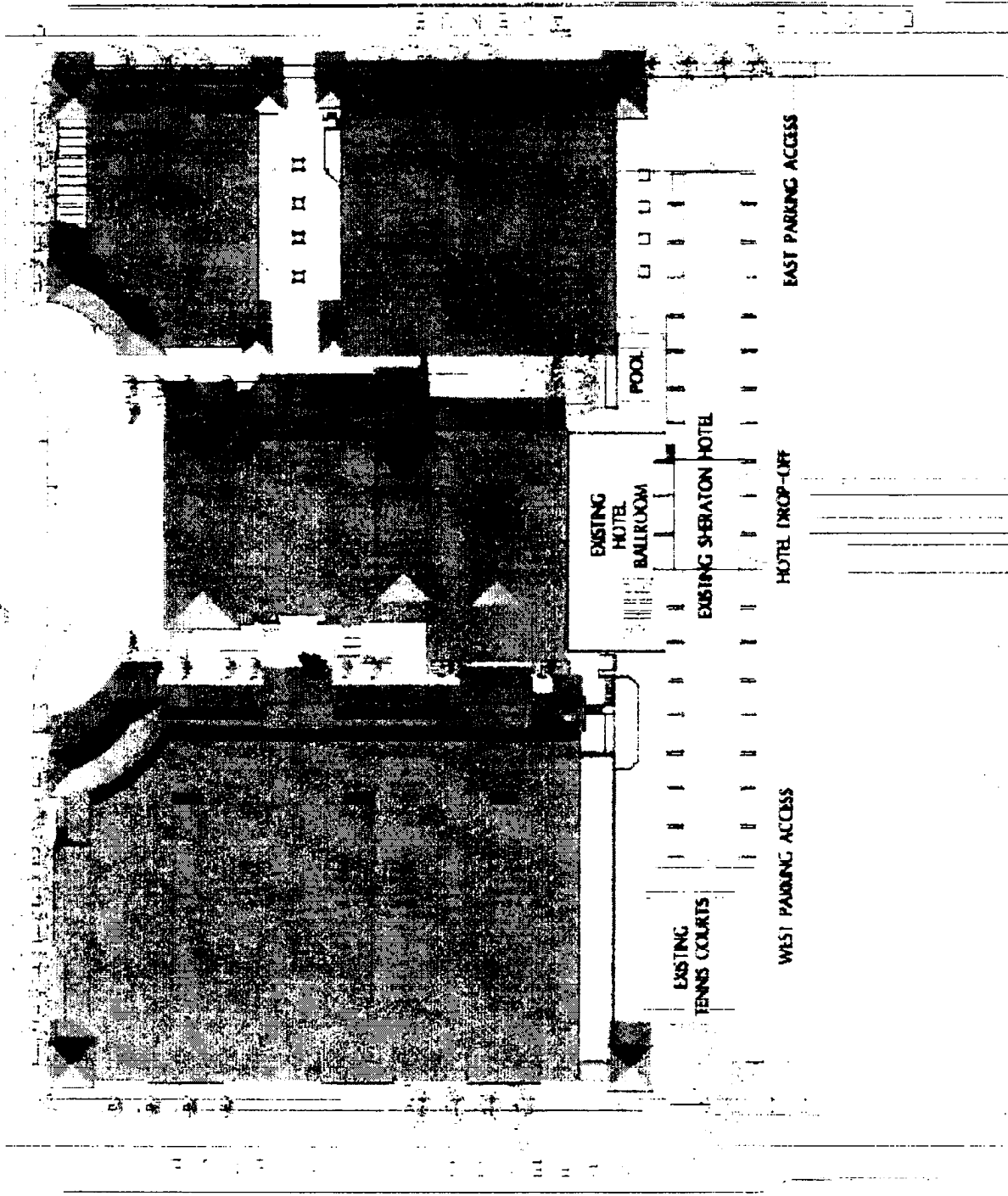
CORPORATE

STREET

July 21 12:00 pm



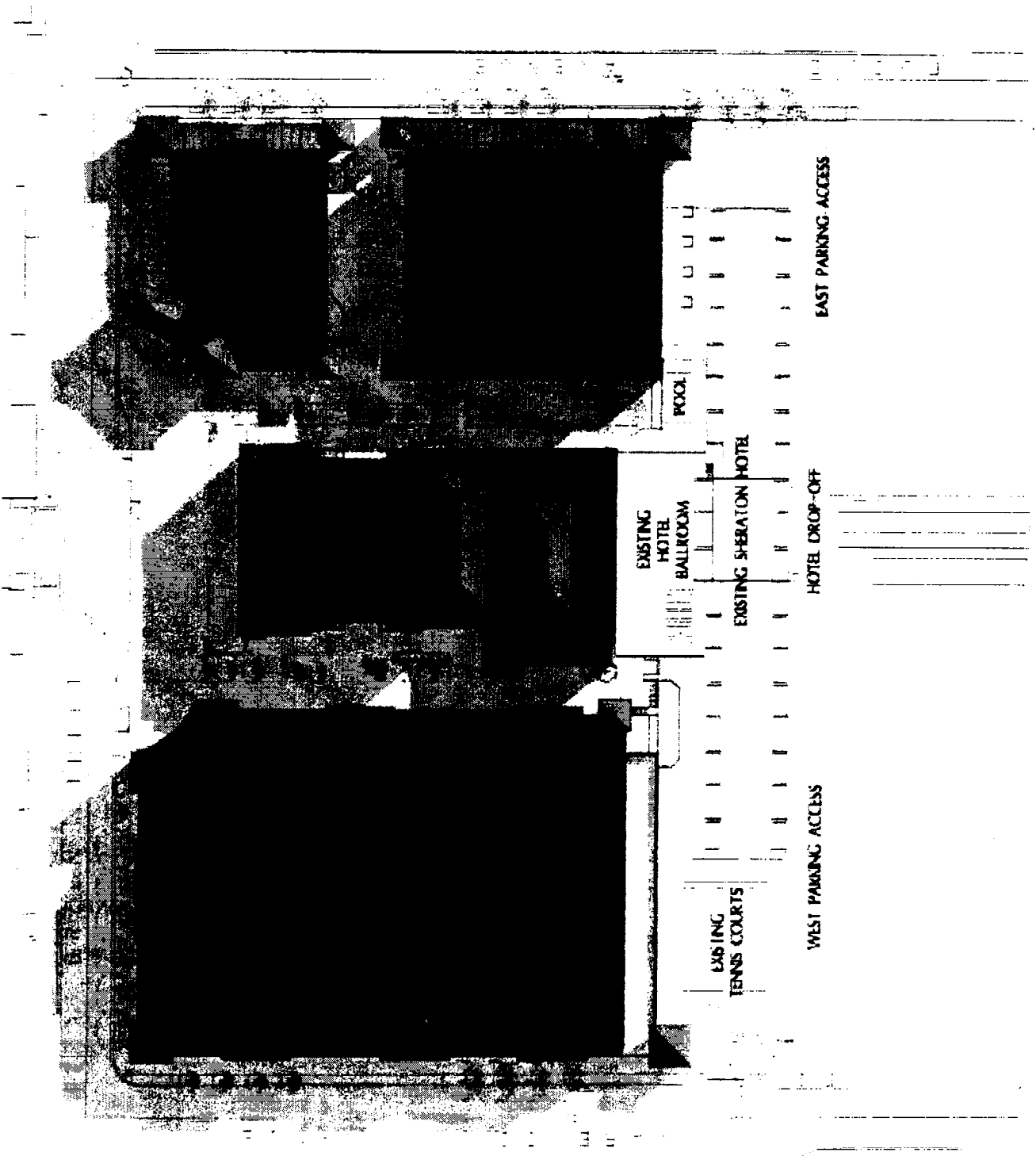
July 21 3:00 pm



PLAN 1000

DATE 7/21/00

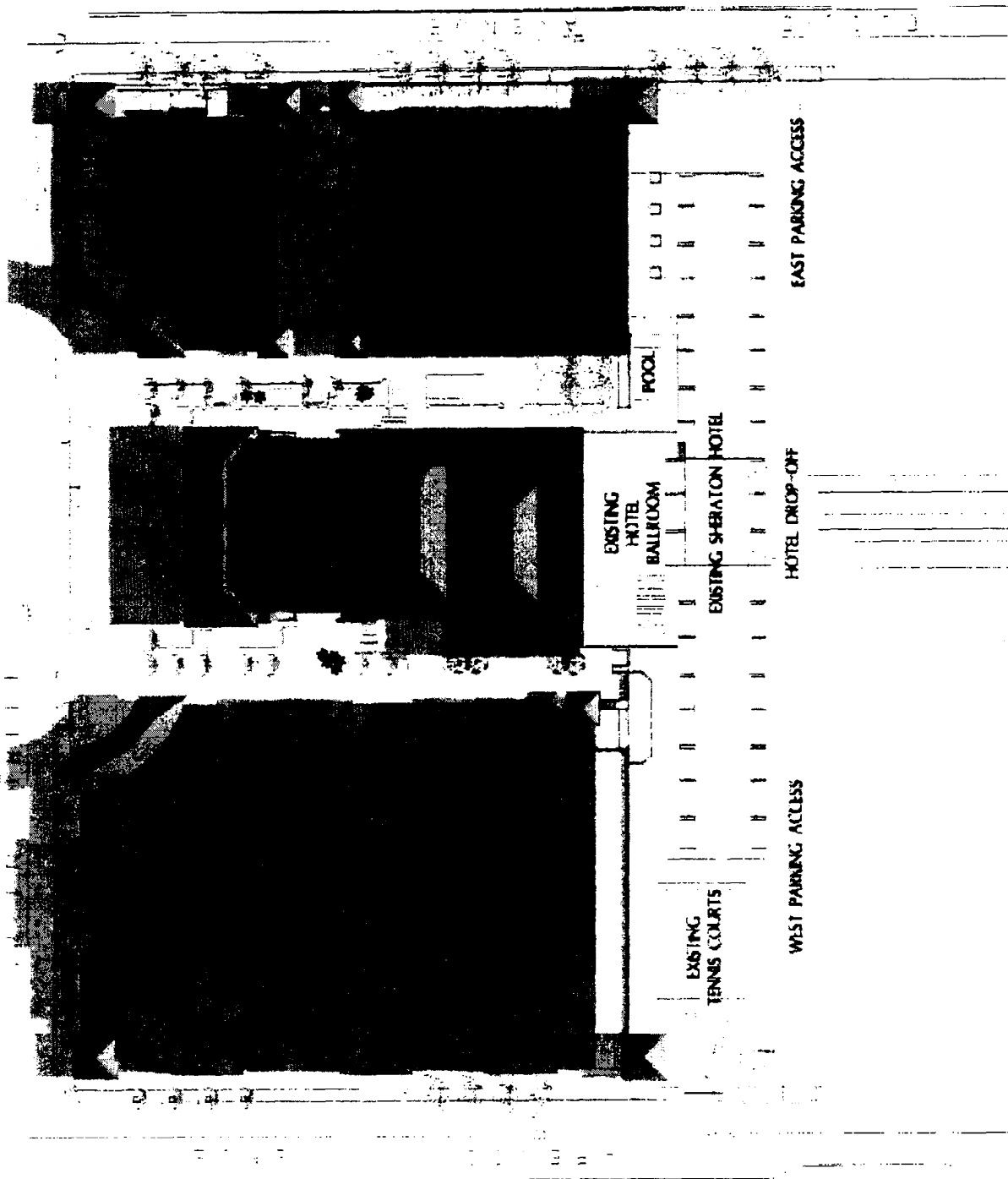
Dec 21 9:00 am



PLAN

12/21/2009

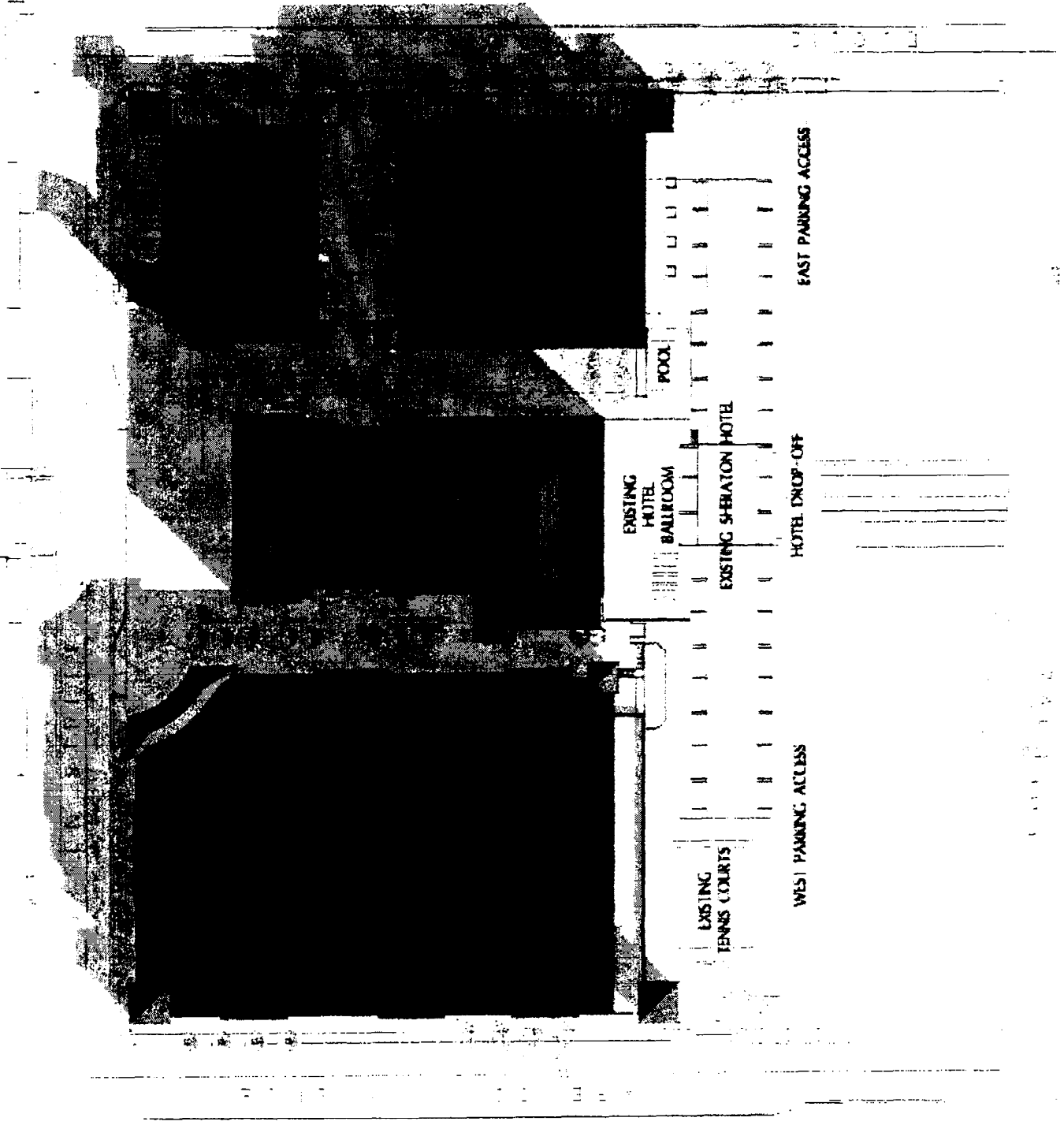
Dec 21 12:00 pm



EXISTING HOTEL

EXISTING HOTEL

Dec 21 3:00 pm



WEST PARKING ACCESS

EAST PARKING ACCESS